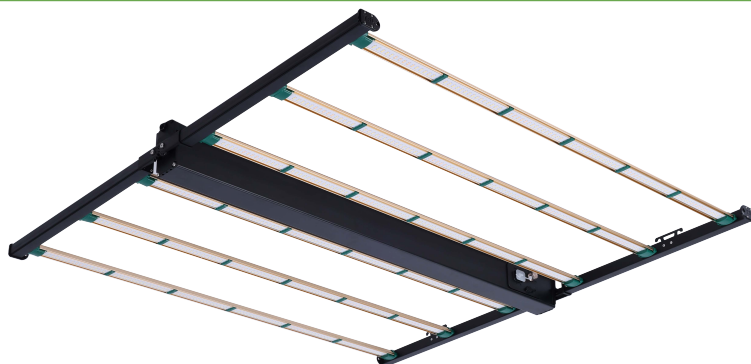


ROI-FF LED Bar Light

Growers Choice's latest LED lighting fixture, the ROI-FF-650, represents a significant advancement in indoor horticulture technology. With a power consumption of 650 watts and an impressive output of 1950 PPF (Photosynthetic Photon Flux), this fixture promises unparalleled efficiency (3.0) for commercial cannabis producers without red loading. Leveraging cutting-edge diode and driver technologies, the ROI-FF-650 delivers a 3k spectrum tailored to the specific needs of your flower rooms. Building upon Growers Choice's established expertise, this fixture maximizes both light output and spectrum quality while minimizing operational expenses. With the ROI-FF-650 growers can expect superior performance and enhanced yields, making it a standout choice in the realm of LED grow lighting solutions.



Full Phase Spectrum

Controller Compatible

Features

- 0-10v Dimming
- 108-480VAC Input
- On board dimming
- IP66
- DLC, ETL

Ordering Information

Series	Model	Spectrum
--------	-------	----------

ROI

FF 650FF

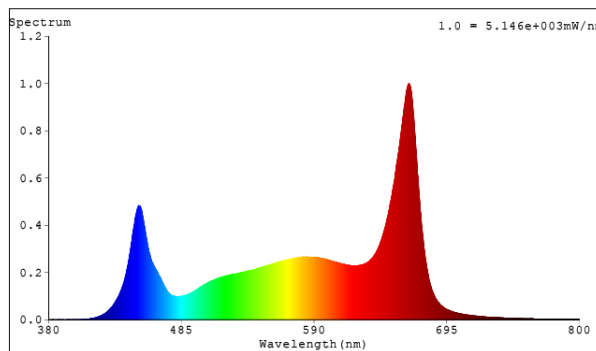
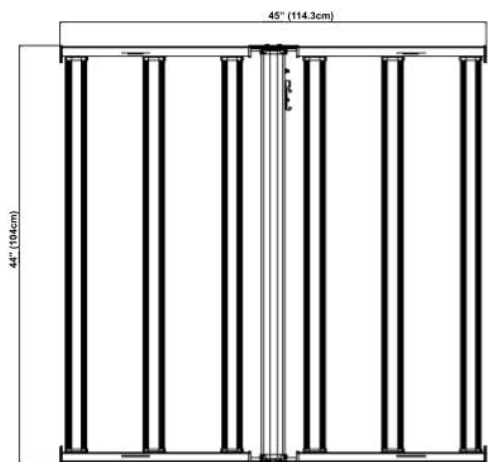
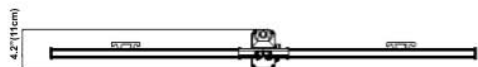
3K
3K-FULLPHASE

AC PLUG TYPE	Ac Power Cord	MOUNTING HARDWARE
--------------	---------------	-------------------

N5P NEMA 5-15P
N6P NEMA 6-15P
L7P NEMA L7-15P
PTP Pigtailed

01 1FT Total 9ft
08 8FT Total 16ft
15 15FT Total 23ft

R Rope Ratchets
SO Special Order



Grower's Choice ROI-FF	
Light Source	LED
Spectrum	GC-3K
PPF (UMOL/J)	1950
Input Power	650w
PPE (umo/s)	3.0
Fixture Dimension (L*W*H)	45"L x 44"W x 4.2"H / 114.3cm x 104cm x 11cm
Weight	9.9kg / 22lbs
Power Driver	Isolated Driver
Driver Efficiency	~90%
Dimming	0-10V & Step Dimming
Dimming Range	10% - 100%
Light Distribution	120°
Maximum Ambient Temperature	104°F / 40°C
Power Factor	>0.9
Certifications	ETL, CE, DLC, IP65
Lifetime	L90>54,000 hrs
Warranty	5 Years Standard Warranty

NOMINAL AMPERAGE BY AC INPUT VOLTAGE @650W

Voltage	120V	240V	277V	480V
Amperage	5.55A	2.8A	2.4A	1.4A