



Jeeter
 2626 South Roosevelt Street
 Tempe, AZ 85282
 License #: 00000066DCBO00410690
 Sample ID: 2601SMAZ0138.0489
 Batch #: DFAZ-DOURAI-011426



CERTIFICATE OF ANALYSIS
 License #: 00000020LCVT89602592

Certificate: 20527

(Jeeter) INFUSED DOUBLE RAINBOW PREROLL 0.5G X 5 1G 2G 0.5G

Batch #: DFAZ-DOURAI-011426
 Strain: DOUBLE RAINBOW
 Parent Batch #:
 Production Method: Other
 Harvest Date: 09/22/2025
 Received: 01/21/2026

Sample ID: 2601SMAZ0138.0489
 Amount Received: 12.2 g
 Sample Type: Enhanced/Infused Flowers
 Sample Collected: 01/21/2026 08:30:00
 Manufacture Date: 01/14/2026
 Published: 01/23/2026



COMPLIANCE FOR RETAIL

Regulated Analytes

Cannabinoid Profile (Q3) Tested	Microbial Contaminants Pass	Residual Solvents Pass
Pesticides, Fungicides, and Growth Regulators Pass	Mycotoxins Pass	Heavy Metals Pass

Additional Analytes (Not Regulated)

Terpenes Total (Q3) Tested	Moisture Analysis (Q3) Tested	Water Activity (Q3) Tested
Filth & Foreign (Q3) Not Tested	Homogeneity (Q3) Not Tested	Additional Microbial Contaminants (Q3) Not Tested

44.6127% Total THC
ND Total CBD
ND CBN
0.2232% CBG
51.1231% Total Cannabinoids (Q3)

Ahmed Munshi
 Technical Laboratory Director

Smithers CTS Arizona LLC
 734 W Highland Avenue, 2nd Floor
 Phoenix, AZ 85013
 (602) 806-6930



The product associated with this COA has been tested by Smithers CTS Arizona LLC, using validated state certified testing methodologies as required by Arizona state law. Testing results were obtained according to Smithers' quality assurance plan and requirements found in R9-17-404.03 and R9-17-404.04. This COA is governed by the terms and conditions listed on: <https://www.smithers.com/arizona-terms-conditions>



Jeeter
 2626 South Roosevelt Street
 Tempe, AZ 85282
 License #: 00000066DCBO00410690
 Sample ID: 2601SMAZ0138.0489
 Batch #: DFAZ-DOURAI-011426



CERTIFICATE OF ANALYSIS
 License #: 00000020LCVT89602592

Certificate: 20527

Cannabinoid Profile

HPLC

Tested

Sample Prep

Batch Date: 01/21/2026
 SOP: 418.AZ
 Batch Number: 5024
 Test ID: 112440

Sample Analysis

Date: 01/22/2026
 SOP: 417.AZ - HPLC
 Sample Weight: 0.042 g
 Volume: 40 mL

Analyte	LOD (mg/g)	LOQ (mg/g)	Dil.	Actual % (w/w)	mg/g	Qualifier
CBC	0.3070	0.9300	1	0.1055	1.0550	
CBD	0.3070	0.9300	1	ND	ND	
CBDA	0.3070	0.9300	1	ND	ND	
CBDV	0.3070	0.9300	1	ND	ND	
CBG	0.3070	0.9300	1	0.2232	2.2320	
CBGA	0.3070	0.9300	1	0.4520	4.5200	
CBN	0.3070	0.9300	1	ND	ND	
d8-THC	0.3070	0.9300	1	ND	ND	
d9-THC	0.3070	0.9300	1	4.6346	46.3460	
THCA	0.3070	0.9300	1	45.5851	455.8510	
THCV	0.3070	0.9300	1	0.1227	1.2270	

Cannabinoid Totals	Actual % (w/w)	mg/g	Qualifier
Total THC	44.6127	446.1270	
Total CBD	ND	ND	
Total Cannabinoids	51.1231	511.2310	Q3

Total THC = THC + (0.877 x THCA) and Total CBD = CBD + (0.877 x CBDA)
 ND = Not Detected, NT = Not Tested, <LOQ = Below Limit of Quantitation

Ahmed Munshi

Technical Laboratory Director

Smithers CTS Arizona LLC
 734 W Highland Avenue, 2nd Floor
 Phoenix, AZ 85013
 (602) 806-6930



The product associated with this COA has been tested by Smithers CTS Arizona LLC, using validated state certified testing methodologies as required by Arizona state law. Testing results were obtained according to Smithers' quality assurance plan and requirements found in R9-17-404.03 and R9-17-404.04. This COA is governed by the terms and conditions listed on: <https://www.smithers.com/arizona-terms-conditions>



Jeeter
 2626 South Roosevelt Street
 Tempe, AZ 85282
 License #: 00000066DCBO00410690
 Sample ID: 2601SMAZ0138.0489
 Batch #: DFAZ-DOURAI-011426



CERTIFICATE OF ANALYSIS
 License #: 00000020LCVT89602592

Certificate: 20527

Terpene Total

GC-FID **Tested (2.6094%)**

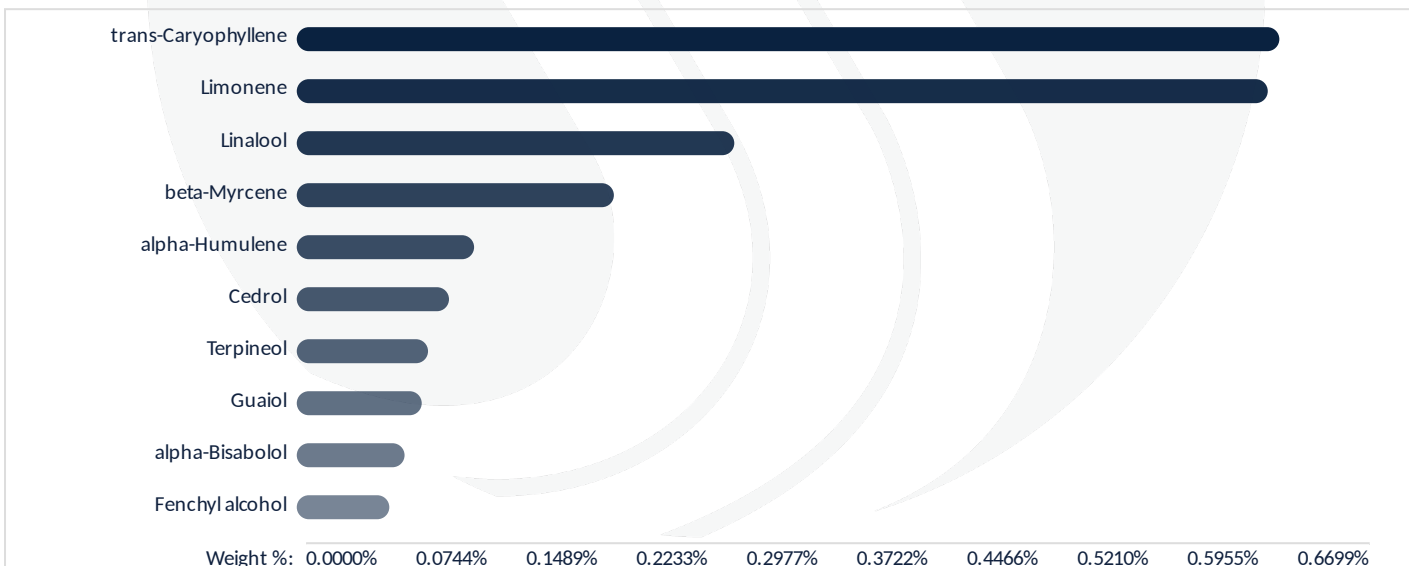
Sample Prep

Batch Date: 01/21/2026
 SOP: 419
 Batch Number: 5016

Sample Analysis

Date: 01/22/2026
 SOP: 419 - GC-FID
 Sample Weight: 0.418 g
 Volume: 10 mL

Analyte	LOD / LOQ (%)	Dil.	Results (%)	Qualifier	Analyte	LOD / LOQ (%)	Dil.	Results (%)	Qualifier
alpha-Bisabolol	0.0010 / 0.0029	1	0.0735	Q3	gamma-Terpinene	0.0010 / 0.0029	1	0.0111	Q3
alpha-Cedrene	0.0010 / 0.0029	1	ND	Q3	Geraniol	0.0010 / 0.0029	1	0.0381	Q3
alpha-Humulene	0.0010 / 0.0029	1	0.1209	Q3	Geranyl acetate	0.0010 / 0.0029	1	ND	Q3
alpha-Phellandrene	0.0010 / 0.0029	1	ND	Q3	Guaiol	0.0010 / 0.0029	1	0.0852	Q3
alpha-Pinene	0.0010 / 0.0029	1	0.0200	Q3	Hexahydrothymol	0.0010 / 0.0029	1	ND	Q3
alpha-Terpinene	0.0010 / 0.0029	1	ND	Q3	Isoborneol	0.0010 / 0.0029	1	ND	Q3
beta-Myrcene	0.0010 / 0.0029	1	0.2162	Q3	Isopulegol	0.0010 / 0.0029	1	ND	Q3
beta-Pinene	0.0010 / 0.0029	1	0.0388	Q3	Limonene	0.0010 / 0.0029	1	0.6620	Q3
Borneol	0.0010 / 0.0029	1	0.0094	Q3	Linalool	0.0010 / 0.0029	1	0.2983	Q3
Camphene	0.0010 / 0.0029	1	0.0055	Q3	Nerol	0.0010 / 0.0029	1	ND	Q3
Camphor	0.0010 / 0.0029	1	ND	Q3	Pulegone (+)	0.0010 / 0.0029	1	ND	Q3
3-Carene	0.0010 / 0.0029	1	ND	Q3	Sabinene Hydrate	0.0010 / 0.0029	1	0.0357	Q3
Caryophyllene oxide	0.0010 / 0.0029	1	0.0147	Q3	Terpineol	0.0010 / 0.0029	1	0.0895	Q3
Cedrol	0.0010 / 0.0029	1	0.1038	Q3	Terpinolene	0.0010 / 0.0029	1	ND	Q3
cis-Nerolidol	0.0010 / 0.0029	1	ND	Q3	trans-Caryophyllene	0.0010 / 0.0029	1	0.6699	Q3
cis-Ocimene	0.0010 / 0.0029	1	ND	Q3	trans-Nerolidol	0.0010 / 0.0029	1	ND	Q3
Fenchyl alcohol	0.0010 / 0.0029	1	0.0631	Q3	trans-Ocimene	0.0010 / 0.0029	1	0.0537	Q3
Eucalyptol	0.0010 / 0.0029	1	ND	Q3	Valencene	0.0010 / 0.0029	1	ND	Q3
Fenchone	0.0010 / 0.0029	1	ND	Q3					



Ahmed Munshi

Technical Laboratory Director

Smithers CTS Arizona LLC
 734 W Highland Avenue, 2nd Floor
 Phoenix, AZ 85013
 (602) 806-6930



The product associated with this COA has been tested by Smithers CTS Arizona LLC, using validated state certified testing methodologies as required by Arizona state law. Testing results were obtained according to Smithers' quality assurance plan and requirements found in R9-17-404.03 and R9-17-404.04. This COA is governed by the terms and conditions listed on: <https://www.smithers.com/arizona-terms-conditions>



Jeeter
 2626 South Roosevelt Street
 Tempe, AZ 85282
 License #: 00000066DCBO00410690
 Sample ID: 2601SMAZ0138.0489
 Batch #: DFAZ-DOURAI-011426



CERTIFICATE OF ANALYSIS
 License #: 00000020LCVT89602592

Certificate: 20527

Microbial Analysis
Pass

Sample Prep

Batch Date: 01/21/2026
 SOP: 412.AZ
 Batch Number: 5021
 Test ID: 112454

Sample Analysis

Date: 01/22/2026
 SOP: 412.AZ - 3M Petrifilm
 Sample Weight: 1.017 g

Analyte	Allowable Criteria	Actual Result	Pass/Fail	Qualifier
E. coli	< 100 CFU/g	< 10 CFU/g	Pass	

Sample Prep

Batch Date: 01/21/2026
 SOP: 406.AZ
 Batch Number: 5019
 Test ID: 112457

Sample Analysis

Date: 01/22/2026
 SOP: 406.AZ - qPCR (MG)
 Sample Weight: 1.011 g

Analyte	Allowable Criteria	Actual Result	Pass/Fail	Qualifier
Salmonella	Not Detected in One Gram	Not Detected in One Gram	Pass	

Sample Prep

Batch Date: 01/21/2026
 SOP: 406.AZ
 Batch Number: 5019
 Test ID: 112459

Sample Analysis

Date: 01/22/2026
 SOP: 406.AZ - qPCR (MG)
 Sample Weight: 1.011 g

Analyte	Allowable Criteria	Actual Result	Pass/Fail	Qualifier
Aspergillus flavus	Not Detected in One Gram	Not Detected in One Gram	Pass	
Aspergillus fumigatus	Not Detected in One Gram	Not Detected in One Gram	Pass	
Aspergillus niger	Not Detected in One Gram	Not Detected in One Gram	Pass	
Aspergillus terreus	Not Detected in One Gram	Not Detected in One Gram	Pass	

Ahmed Munshi

Technical Laboratory Director

Smithers CTS Arizona LLC
 734 W Highland Avenue, 2nd Floor
 Phoenix, AZ 85013
 (602) 806-6930



The product associated with this COA has been tested by Smithers CTS Arizona LLC, using validated state certified testing methodologies as required by Arizona state law. Testing results were obtained according to Smithers' quality assurance plan and requirements found in R9-17-404.03 and R9-17-404.04. This COA is governed by the terms and conditions listed on: <https://www.smithers.com/arizona-terms-conditions>



Jeeter
 2626 South Roosevelt Street
 Tempe, AZ 85282
 License #: 00000066DCBO00410690
 Sample ID: 2601SMAZ0138.0489
 Batch #: DFAZ-DOURAI-011426



CERTIFICATE OF ANALYSIS
 License #: 00000020LCVT89602592

Certificate: 20527

Residual Solvents

HS-GC-MS

Pass

Sample Prep

Batch Date: 01/21/2026
 SOP: 405.AZ
 Batch Number: 5015
 Test ID: 112441

Sample Analysis

Date: 01/22/2026
 SOP: 405.AZ - HS-GC-MS
 Sample Weight: 0.052 g

Analyte	LOD / LOQ (ppm)	Dil.	Action Limit (ppm)	Results (ppm)	Qualifier	Analyte	LOD / LOQ (ppm)	Dil.	Action Limit (ppm)	Results (ppm)	Qualifier
Acetone	63 / 192	1	1000	ND		Heptane	321 / 962	1	5000	ND	
Acetonitrile	27 / 79	1	410	ND		Hexanes	46 / 139	1	290	ND	
Benzene	0.14 / 0.39	1	2	ND		Isopropyl acetate	321 / 962	1	5000	ND	
Butanes	160 / 481	1	5000	ND		Methanol	192 / 577	1	3000	<LOQ	
Chloroform	4 / 12	1	60	ND		Pentanes	321 / 962	1	5000	ND	
Dichloromethane	38 / 115	1	600	ND		2-Propanol (IPA)	321 / 962	1	5000	ND	
Ethanol	321 / 962	1	5000	ND		Toluene	58 / 171	1	890	ND	
Ethyl acetate	321 / 962	1	5000	ND		Xylenes	279 / 835	1	2170	ND	
Ethyl ether	321 / 962	1	5000	ND							

Ahmed Munshi

Technical Laboratory Director

Smithers CTS Arizona LLC

734 W Highland Avenue, 2nd Floor
 Phoenix, AZ 85013
 (602) 806-6930



Accreditation #: 103104

The product associated with this COA has been tested by Smithers CTS Arizona LLC, using validated state certified testing methodologies as required by Arizona state law. Testing results were obtained according to Smithers' quality assurance plan and requirements found in R9-17-404.03 and R9-17-404.04.

This COA is governed by the terms and conditions listed on: <https://www.smithers.com/arizona-terms-conditions>



Jeeter
 2626 South Roosevelt Street
 Tempe, AZ 85282
 License #: 00000066DCBO00410690
 Sample ID: 2601SMAZ0138.0489
 Batch #: DFAZ-DOURAI-011426



CERTIFICATE OF ANALYSIS
 License #: 00000020LCVT89602592

Certificate: 20527

Heavy Metals

ICP-MS **Pass**

Sample Prep
 Batch Date: 01/22/2026
 SOP: 428.AZ
 Batch Number: 5026
 Test ID: 112442

Sample Analysis
 Date: 01/23/2026
 SOP: 428.AZ - ICP-MS
 Sample Weight: 0.210 g
 Volume: 6 mL

Analyte	LOD (ppm)	LOQ (ppm)	Dil.	Action Limit (ppm)	Results (ppm)	Qualifier
Arsenic	0.057	0.191	10	0.4	ND	
Cadmium	0.057	0.191	10	0.4	ND	
Lead	0.057	0.476	10	1	ND	
Mercury	0.057	0.095	10	0.2	ND	

Mycotoxin Analysis

LC-MS/MS **Pass**

Sample Prep
 Batch Date: 01/20/2026
 SOP: 432.AZ
 Batch Number: 5013
 Test ID: 112446

Sample Analysis
 Date: 01/22/2026
 SOP: 424.AZ - LC-MS/MS
 Sample Weight: 0.501 g
 Volume: 12.5 mL

Analyte	LOD (ppb)	LOQ (ppb)	Dil.	Action Limit (ppb)	Results (ppb)	Qualifier
Total Aflatoxins	3.99	9.98	1	20	ND	
Aflatoxin B1	3.99	9.98	1		ND	
Aflatoxin B2	3.99	9.98	1		ND	
Aflatoxin G1	3.99	9.98	1		ND	
Aflatoxin G2	3.99	4.99	1		ND	
Ochratoxin A	9.98	9.98	1	20	ND	I1, L1 V1

Ahmed Munshi
 Technical Laboratory Director

Smithers CTS Arizona LLC
 734 W Highland Avenue, 2nd Floor
 Phoenix, AZ 85013
 (602) 806-6930



The product associated with this COA has been tested by Smithers CTS Arizona LLC, using validated state certified testing methodologies as required by Arizona state law. Testing results were obtained according to Smithers' quality assurance plan and requirements found in R9-17-404.03 and R9-17-404.04. This COA is governed by the terms and conditions listed on: <https://www.smithers.com/arizona-terms-conditions>



Jeeter
 2626 South Roosevelt Street
 Tempe, AZ 85282
 License #: 00000066DCBO00410690
 Sample ID: 2601SMAZ0138.0489
 Batch #: DFAZ-DOURAI-011426



CERTIFICATE OF ANALYSIS
 License #: 00000020LCVT89602592

Certificate: 20527

**Pesticides, Fungicides, and
 Growth Regulators**
 LC-MS/MS **Pass**

Sample Prep

Batch Date: 01/20/2026
 SOP: 432.AZ
 Batch Number: 5013
 Test ID: 112445

Sample Analysis

Date: 01/22/2026
 SOP: 424.AZ - LC-MS/MS
 Sample Weight: 0.501 g
 Volume: 12.5 mL

Analyte	LOD / LOQ (ppm)	Dil.	Action Limit (ppm)	Results (ppm)	Qualifier	Analyte	LOD / LOQ (ppm)	Dil.	Action Limit (ppm)	Results (ppm)	Qualifier
Abamectin B1a	0.083 / 0.250	1	0.5	ND		Hexythiazox	0.167 / 0.499	1	1	ND	
Acephate	0.067 / 0.200	1	0.4	ND		Imazalil	0.033 / 0.100	1	0.2	ND	
Acetamiprid	0.033 / 0.100	1	0.2	ND		Imidacloprid	0.067 / 0.200	1	0.4	ND	V1
Aldicarb	0.067 / 0.200	1	0.4	ND		Kresoxim-methyl	0.067 / 0.200	1	0.4	ND	
Azoxystrobin	0.033 / 0.100	1	0.2	ND		Malathion	0.033 / 0.100	1	0.2	ND	
Bifenazate	0.033 / 0.100	1	0.2	ND		Metaxyl	0.033 / 0.100	1	0.2	ND	
Bifenthrin	0.033 / 0.100	1	0.2	ND		Methiocarb	0.033 / 0.100	1	0.2	ND	
Boscalid	0.067 / 0.200	1	0.4	ND		Methomyl	0.067 / 0.200	1	0.4	ND	
Carbaryl	0.033 / 0.100	1	0.2	ND		Myclobutanil	0.033 / 0.100	1	0.2	ND	V1
Carbofuran	0.033 / 0.100	1	0.2	ND		Naled	0.083 / 0.250	1	0.5	ND	
Chlorantraniliprole	0.033 / 0.100	1	0.2	ND		Oxamyl	0.167 / 0.499	1	1	ND	
Chlorfenapyr	0.167 / 0.499	1	1	ND	V1	Pacllobutrazol	0.067 / 0.200	1	0.4	ND	
Chlorpyrifos	0.033 / 0.100	1	0.2	ND		Permethrins	0.033 / 0.100	1	0.2	ND	
Clofentezine	0.033 / 0.100	1	0.2	ND		Phosmet	0.033 / 0.100	1	0.2	ND	
Cyfluthrin	0.167 / 0.499	1	1	ND		Piperonyl Butoxide	0.332 / 0.998	1	2	ND	
Cypermethrin	0.167 / 0.499	1	1	ND		Prallethrin	0.033 / 0.100	1	0.2	ND	
Daminozide	0.167 / 0.499	1	1	ND		Propiconazole	0.067 / 0.200	1	0.4	ND	
Diazinon	0.033 / 0.100	1	0.2	ND		Propoxur	0.033 / 0.100	1	0.2	ND	
Dichlorvos	0.017 / 0.050	1	0.1	ND		Pyrethrins	0.139 / 0.418	1	1	ND	
Dimethoate	0.033 / 0.100	1	0.2	ND		Pyridaben	0.033 / 0.100	1	0.2	ND	
Ethoprophos	0.033 / 0.100	1	0.2	ND		Spinosad	0.033 / 0.100	1	0.2	ND	
Etofenprox	0.067 / 0.200	1	0.4	ND		Spiromesifen	0.033 / 0.100	1	0.2	ND	
Etoxazole	0.033 / 0.100	1	0.2	ND		Spirotetramat	0.033 / 0.100	1	0.2	ND	V1
Fenoxycarb	0.033 / 0.100	1	0.2	ND		Spiroxamine	0.067 / 0.200	1	0.4	ND	
Fenpyroximate	0.067 / 0.200	1	0.4	ND		Tebuconazole	0.067 / 0.200	1	0.4	ND	
Fipronil	0.067 / 0.200	1	0.4	ND	V1	Thiacloprid	0.033 / 0.100	1	0.2	ND	
Fonicamid	0.167 / 0.499	1	1	ND	V1	Thiamethoxam	0.033 / 0.100	1	0.2	ND	
Fludioxonil	0.067 / 0.200	1	0.4	ND		Trifloxystrobin	0.033 / 0.100	1	0.2	ND	

Ahmed Munshi
 Technical Laboratory Director

Ahmed Munshi

Smithers CTS Arizona LLC
 734 W Highland Avenue, 2nd Floor
 Phoenix, AZ 85013
 (602) 806-6930



The product associated with this COA has been tested by Smithers CTS Arizona LLC, using validated state certified testing methodologies as required by Arizona state law. Testing results were obtained according to Smithers' quality assurance plan and requirements found in R9-17-404.03 and R9-17-404.04. This COA is governed by the terms and conditions listed on: <https://www.smithers.com/arizona-terms-conditions>



Jeeter
 2626 South Roosevelt Street
 Tempe, AZ 85282
 License #: 00000066DCBO00410690
 Sample ID: 2601SMAZ0138.0489
 Batch #: DFAZ-DOURAI-011426



CERTIFICATE OF ANALYSIS
 License #: 00000020LCVT89602592

Certificate: 20527

Moisture Analysis

Moisture: **8.25 %**
 Qualifier: Q3

Sample Prep and Analysis

Date: 01/21/2026
 SOP: 411 - Moisture Balance
 Sample Weight: 0.315 g

Water Activity

Water Activity: **0.3739AW aw**
 Qualifier: Q3

Sample Prep and Analysis

Date: 01/21/2026
 SOP: 433 - Water Activity Meter
 Sample Weight: 0.635 g

Ahmed Munshi

Technical Laboratory Director

Smithers CTS Arizona LLC
 734 W Highland Avenue, 2nd Floor
 Phoenix, AZ 85013
 (602) 806-6930



The product associated with this COA has been tested by Smithers CTS Arizona LLC, using validated state certified testing methodologies as required by Arizona state law. Testing results were obtained according to Smithers' quality assurance plan and requirements found in R9-17-404.03 and R9-17-404.04. This COA is governed by the terms and conditions listed on: <https://www.smithers.com/arizona-terms-conditions>



Jeeter
 2626 South Roosevelt Street
 Tempe, AZ 85282
 License #: 00000066DCBO00410690
 Sample ID: 2601SMAZ0138.0489
 Batch #: DFAZ-DOURAI-011426



CERTIFICATE OF ANALYSIS
 License #: 00000020LCVT89602592

Certificate: 20527

Qualifier Legend

- B1** The target analyte detected in the calibration is at or above the limit of quantitation, but the sample result for potency testing, is below the limit of quantitation.
- B2** The target analyte detected in the calibration blank, or the method blank is at or above the limit of quantitation, but the sample result when testing for pesticides, fungicides, herbicides, growth regulators, heavy metals, or residual solvents, is below the maximum allowable concentration for the analyte.
- D1** The limit of quantitation and the sample results were adjusted to reflect sample dilution.
- I1** The relative intensity of a characteristic ion in a sample analyte exceeded the acceptance with respect to the reference spectra, indicating interference.
- L1** When testing for pesticides, fungicides, herbicides, growth regulators, heavy metals, or residual solvents, the percent recovery of a laboratory control sample is greater than the acceptance limits, but the sample's target analytes were not detected above the maximum allowable concentrations for the analytes in the sample.
- M1** The recovery from the matrix spike was high, but the recovery from the laboratory control sample was within acceptance criteria.
- M2** The recovery from the matrix spike was low, but the recovery from the laboratory control sample was within acceptance criteria.
- M3** The recovery from the matrix spike was unusable because the analyte concentration was disproportionate to the spike level, but the recovery from the laboratory control sample was within acceptance criteria.
- M4** The analysis of a spiked sample required a dilution such that the spike recovery calculation does not provide useful information, but the recovery from the associated laboratory control sample was within acceptance criteria.
- M5** The analyte concentration was determined by the method of standard addition, in which the standard is added directly to the aliquots of the analyzed sample.
- M6** A description of the variance is described in the final report of testing according to R9-17- 404.06(B)(3)(d)(ii).
- Q1** Sample integrity was not maintained.
- Q2** The sample is heterogeneous, and sample homogeneity could not be readily achieved using routine laboratory practices.
- Q3** Testing result is for informational purposes only and cannot be used to satisfy dispensary testing requirements in R9-17-317.01(A) or labeling requirements in R9-17-317.
- R1** The relative percent difference for the laboratory control sample and duplicate exceeded the limit, but the recovery was within acceptance criteria.
- R2** The relative percent difference for a sample and duplicate exceeded the limit.
- V1** The recovery from continuing calibration verification standards exceeded the acceptance limits, but the sample's target analytes were not detected above the maximum allowable for the analytes in the sample.

Cultivated By:

Manufactured By:

Disclaimer: Using marijuana during pregnancy could cause birth defects or other health issues to your unborn child.

Ahmed Munshi

Technical Laboratory Director

Smithers CTS Arizona LLC
 734 W Highland Avenue, 2nd Floor
 Phoenix, AZ 85013
 (602) 806-6930



The product associated with this COA has been tested by Smithers CTS Arizona LLC, using validated state certified testing methodologies as required by Arizona state law. Testing results were obtained according to Smithers' quality assurance plan and requirements found in R9-17-404.03 and R9-17-404.04. This COA is governed by the terms and conditions listed on: <https://www.smithers.com/arizona-terms-conditions>



Jeeter
 2626 South Roosevelt Street
 Tempe, AZ 85282
 License #: 00000066DCBO00410690
 Sample ID: 2601SMAZ0138.0489
 Batch #: DFAZ-DOURAI-011426



CERTIFICATE OF ANALYSIS
 License #: 00000020LCVT89602592

Certificate: 20527

Notes: METHOD OF EXTRACTION: BUTANE AND PRESSED



Ahmed Munshi

Technical Laboratory Director

Smithers CTS Arizona LLC
 734 W Highland Avenue, 2nd Floor
 Phoenix, AZ 85013
 (602) 806-6930



The product associated with this COA has been tested by Smithers CTS Arizona LLC, using validated state certified testing methodologies as required by Arizona state law. Testing results were obtained according to Smithers' quality assurance plan and requirements found in R9-17-404.03 and R9-17-404.04. This COA is governed by the terms and conditions listed on: <https://www.smithers.com/arizona-terms-conditions>

Final Product Information:	
Product Form	INFUSED PREROLL
Strain	DOUBLE RAINBOW
Batch Number	DFAZ-DOURAI-011426
Date of Manufacture	1/14/2026
Flower Information:	
Strain	ECTO COOLER
Batch Number(s)	2425ECLR.32
Harvest Date(s)	9/22/2025
Cultivated By	Holistic Patient Wellness Group 00000019DCGM00234427/00000015ESEM68131310
Concentrate Information:	
Type(s)	THCA I LIQUID ROSIN
Strain(s)	HYBRID SUPERBOOF LIVE ROSIN SAP
Batch Number(s)	TCL121625 07.01.25.SPBF.LROF.SAP
Extraction (Manufacture) Date (s)	12/16/2025 07/01/2025
Extraction Type(s)	BUTANE I PRESSED
Manufactured By	Life Changers Investments LLC # 0000156ESTDP70697204 Total Health and Wellness 00000021ESQX24132908 Holistic Patient Wellness Group 00000019DCGM00234427/00000015ESEM68131310
Concentrate Input Flower Information:	
Strain/Batch ID	Harvest Date/Cultivator License #
CURELATO - Curelato F8.6 08/06/2025	08/06/2025-Total Health and Wellness 00000021ESQX24132908
CURELATO - Curelato F2.8 08/13/2025	08/13/2025-Total Health and Wellness 00000021ESQX24132908
CURELATO - Curelato F1.6 07/23/2025	7/23/2025-Total Health and Wellness 00000021ESQX24132908
CURELATO - Curelato F7.8 09/17/2025	09/17/2025-Total Health and Wellness 00000021ESQX24132908
CURELATO - Curelato F3.8 08/27/2025	08/27/2025-Total Health and Wellness 00000021ESQX24132908
CURELATO - Curelato F4.7 07/01/2025	07/01/2025-Total Health and Wellness 00000021ESQX24132908
CURELATO - Curelato F2.9 10/15/2025	10/15/2025-Total Health and Wellness 00000021ESQX24132908
CURELATO - Curelato F7.9 11/19/2025	11/09/2025-Total Health and Wellness 00000021ESQX24132908
CURELATO - Curelato F6.8 07/30/2025	7/30/2025-Total Health and Wellness 00000021ESQX24132908
CURELATO - Curelato F6.8 07/30/2025	7/30/2025-Total Health and Wellness 00000021ESQX24132908
BOLATO - Bolato F5.7 07/09/2025	07/09/2025-Total Health and Wellness 00000021ESQX24132908
SUPERBOOF - 0822SPBF.45	5/30/2025 - Holistic Patient Wellness Group 00000019DCGM00234427/00000015ESEM68131310
SUPERBOOF - 2724SPBF.34	10/01/2024 - Holistic Patient Wellness Group 00000019DCGM00234427/00000015ESEM68131310
SUPERBOOF - 3224SPBF.45	11/06/2024 - Holistic Patient Wellness Group 00000019DCGM00234427/00000015ESEM68131310
Finished Product Distribution Chain:	
Manufactured/Cultivated By	Ponderosa Botanical care inc. # 00000066DCBO00410690
Packaged By	Ponderosa Botanical care inc. # 00000066DCBO00410690
Distributed By	Ponderosa Botanical care inc. # 00000066DCBO00410690
Arizona Dept. of Health Services Warning	Using marijuana during pregnancy could cause birth defects or other health issues to your unborn child.
Intended Point of Sale Locations	
Marijuana Establishment Name	Marijuana Establishment License Number
All Greens - All Greens Inc	00000011DCMZ00182361, 00000033ESLY55591549
Altitude Dispensary - Arizona Wellness Center	0000142DRCLD76170272
Arizona Natural Concepts - RJK Ventures, Inc.	00000131DCYO00924714
Arizona Organix - Arizona Organix	00000099DCPL00826691, 00000095ESIP13817359
AZCS - Arizona Cannabis Society Inc	00000090DCYT00194857, 00000042ESJB38310180
Consume Show Low - Compassionate Care of AZ, INC.	00000068DCJU00476804, 00000091ESHS96689917
Curaleaf (48th St) - All Rebel Rockers Inc	00000131ESYX97720376, 00000117DCBN00282429
Curaleaf (Bell Rd) - Devine Desert Healing Inc	00000107DCFT00824215
Curaleaf (Camelback) -Healing Healthcare 3 Inc	00000047DCOU00565305, 00000020ESEN67630727
Curaleaf (East Glendale) - Whoa QC Inc	00000069ESPV40435704, 00000042DCSI00109560
Curaleaf (Gilbert) - Absolute Health Care Inc	00000027ESMP88938972, 00000034DCOD00007550
Curaleaf (Glendale) - PP Wellness Center	00000050ESTO08528992, 00000010DCID00070698
Curaleaf (Midtown) - Catalina Hills Botanical Care Inc	00000016DCCC00020807, 00000025ESOX62486193
Curaleaf (Pavilions) - Phytotherapeutics Of Tucson	00000049ESUK39624376, 00000029DCRV00169614
Curaleaf (Phx Airport) - Zonacare	00000024ESUV84524312, 00000087DCTX00681297
Curaleaf (Scottsdale) - Natural Remedy Patient Center	00000125ESMC92036121, 00000064DCTS00268592
Curaleaf (Sedona) - Arizona Natures Wellness	00000030ESDG72791381,00000082DCYU00561946
Curaleaf (Tuscon) - AZCL1	00000054ESDU93884651, 00000040DCOV00144711
Curaleaf (Youngtown) - K Group Partners Llc	00000076DCBK00035366, 00000029ESAA16670843

Curaleaf (Peoria) - Pinal County Wellness Center	00000059ESZW76539792, 00000020DCGM00200033
Curaleaf(Hub) - Natural Herbal Remedies Inc	00000058ESFA63267513, 00000053DCXB00858835
D2 Dispensary (Oracle) - The Green Halo Llc	00000026DCOM00244803, 00000120ESGW29293058
D2 Dispensary - 46 Wellness Llc	00000116DCJL00597353, 00000128ESJI00619914
Deeply Rooted - Desert Boyz	0000153ESTXW47689762
Desert Bloom ReLeaf Center - Medmar, Tanque Verde Llc	00000039ESEZ33667642, 00000081DCPK00962019
Downtown Dispensary - Forever 46 Llc	00000057DCHF00477864, 00000126ESDQ50929013
Earth's Healing (North) - Globe Pharmacy Inc	00000108ESND56774062, 00000045DCYU00647140
Earth's Healing (South) - Earth's Healing Inc	00000112ESWR37460976, 00000027DCPI00457346
Farm Fresh - Fwa Inc	00000062ESGQ60020478
Giving Tree Dispensary- The Giving Tree Wellness Center Of North Phoenix Inc.	000000021DCLU00461342, 00000023ESLL63816994
GreenPharms (Flagstaff) - Desertview Wellness & Healing Solutions, LLC	00000038DCAL00224416, 00000077ESTT45790153
Greenpharms (Mesa) - The Healing Center Pharmacy Llc	00000004DCKF00438872, 00000074ESMJ87013698
Halo Cannabis - Blue Palo Verde 1, LLC	0000150ESTPZ83854528
Hana Meds (Green Valley) - Broken Arrow Herbal Center Inc	00000096DCXQ00231932 00000102ESWC76772229
Hana Meds (Phoenix) - CJK INC	00000003DCOU00038157 00000106ESEU57773093
Health for Life (Crismon) - The Healing Center Wellness Center	00000041DCEN00861221 00000115ESJB22990289
Herbal Wellness Hub - Herbal Wellness Center Inc	00000086DCKR00375578, 00000032ESPT83532730
Jars (24th St & University) - Dreem Green Inc	00000078ESQG10647381
Jars (Arcadia) - Legacy & Co, Inc	00000079ESTS64678211
Jars (BullHead City) - MCCSE82	0000165ESTJX05511145
Jars (Cave Creek) - Wickenburg Alternative Medicine Llc	00000061DCMK00381513, 00000097ESKC38985532
Jars (El Mirage) - MCCSE240, LLC	0000169ESTMB88870542
Jars (Kingman) - MCCSE214, LLC	0000164ESTEB22806734
Jars (Mesa) - Mohave Cannabis Club 1	00000098ESAA47054477, 00000002DCJK00811479
Jars (Metro) - Desert Medical Campus	00000024DCTZ00479209, 00000038ESPN59181329
Jars (Mohave Globe) - Lawrence Health Services LLC	00000136ESTJ56415147
Jars (Mohave Safford) - Piper's Shop LLC	00000138ESOA91816349
Jars (New River) - MCCSE82	0000165ESTJX05511145
Jars (Payson) - Gila Dreams X, LLC	00000137ESPF58509627
Jars (Peoria) - Mohave Cannabis Club 2, LLC	00000119ESKK32735375
Jars (Phoenix) - Mohave Cannabis Club 3, LLC	00000133DCEJ00283862, 00000122ESRN95872973
Jars (Prescott Valley) - Mohave Cannabis Club 4, LLC	00000107ESVJ79465811
Jars (Somerton) - Yuma County Dispensary LLC	00000145ESNP12373673
Jars (Tucson) - Greenmed, Inc	00000017DCEX00412883
Jars HUB - Legacy & Co., Inc	00000079ESTS64678211, 00000006DCDX00478035
LunchBox Dispensary - MK Associates LLC	00000143ESKB17654619
Medusa Farms - Verde Dispensary Inc	00000063ESQI60809124, 00000089DCQY00546716
NatureMed Tuscon - Arizona Golden Leaf Wellness, Llc	00000067ESBS89254298, 00000077DCPS00216601
Natures Wonder (Apache Junction) - Nature's Wonder Inc	00000075ESJK64208740, 00000035DCCB00049778
Natures Wonder (Grand) - Non Profit Patient Center Inc	00000037ESIX56363099
Natures Wonder (Phoenix) - The Desert Valley Pharmacy Inc	00000089ESLW87335751, 00000060DCIS00424661
Nirvana (75TH AVE) - OCOTILLO VISTA INC	00000051ESYP04501588, 00000109DCIT00443532
Nirvana (APACHE JUNCTION) - AZ FLOWER POWER LLC	0000148ESTMY68096274
Nirvana (Prescott) - TOTAL ACCOUNTABILITY SYSTEMS INC	00000009DCYP00763819, 00000110ESBL46708127
Nirvana (TUCSON) - ARIZONA TREE EQUITY 2	00V00170ESTQ68678199
Nirvana (35TH AVE) - NIRVANA ENTERPRISES AZ LLC	00000121ESBM38825533, 00000015DCGC00626237
Nirvana (7TH ST) - YAVAPAI HERBAL SERVICES INC	00000111ESTX14447382
Nirvana (Apache Junction) - Svaccha	00000137DCOF00188324
Nirvana (FLORENCE) - GRUNGE FREE LLC	0000160ESTDY36165846
Noble Herb - Rch Wellness Center	00000069DCFG00710475 00000080ESNP00364439
Ponderosa (Tempe/Mesa) - Arizona Wellness Collective 3, Inc.	00000044ESZW01555573, 119DCKO00583347
Phoenix Relief Center - Phoenix Relief Center Inc	00000095DCVW00172644, 00000047ESRJ75098505
Ponderosa Dispensaries (Queen Creek) - H4L Ponderosa LLC	00000093DCCB00293679 00000118ESDH66162163
Ponderosa Dispensaries (Phoenix) - ABACA Ponderosa, LLC	00000116ESSM79524188
Ponderosa Dispensaries (Mesa) - Soothing Ponderosa, LLC	00000094DCTJ00667966, 00000117ESPN93487198
Ponderosa Dispensary (Chandler) - Ponderosa Botanical Care Inc	00000066DCBO00410690, 00000109ESVM44878444
Ponderosa Dispensary (Flagstaff) - High Mountain Health	00000050DCBO00239922, 00000087ESWR93327597
Ponderosa Dispensary (Tucson) - 480 License Holdings LLC	0000154ESTQI31348041
Ponderosa Dispensary(Glendale) - MMJ Apothecary	00000100ESEC12878172, 00000062DCAY00861940
Reef Northwest Phoenix - Whoa Qc Inc	00000042DCSI00109560, 00000069ESPV40435704
Reef Queen Creek - The Kind Relief Inc	00000049DCRR00713151, 00000053ESYR15319850
Sol Flower (Casa Adobes) - S Flower SE 4, Inc.	0000152ESTNJ52349435

<i>Sol Flower (Shea) - S Flower N Phoenix, Inc.</i>	00000028DCGV00174888
<i>Sol Flower (McClintock) - Holistic Patient Wellness Group</i>	00000019DCGM00234427
<i>Sol Flower (North Tucson) - S Flower SE 3 Inc.</i>	0000171ESTSC03605413
<i>Sol Flower (Scottsdale) - CSI Solutions, Inc.</i>	00000008DCJ00257791, 00000012ESIS11195422
<i>Sol Flower (Sun City) - East Valley Patient Wellness Group Inc</i>	00000063DCB00283389, 00000019ESXY11403163
<i>Sol Flower (Tucson Foothills) - S Flower SE 1, Inc</i>	0000166ESTNU15027116
<i>Sol Flower (Tucson Valencia) - S Flower SE 2, Inc.</i>	0000163ESTSO81819209
<i>Sol Flower (University) - Holistic Patient Wellness Group</i>	00000019DCGM00234427, 00000015ESEM68131310
<i>Sticky Saguaro - Border Health, Inc</i>	00000108DCVB00423429, 00000022ESMC44584355
<i>STORY (BULLHEAD) - Juicy Joint I LLC</i>	0000147ESTXX54706468
<i>Story (DUNLAP) - ANPS Holdco LLC</i>	00000013DCOU00042197, 00000096ESWI60030184
<i>Story (GLENDALE) - Pleasant Plants 1 LLC</i>	0000159ESTFT57497963
<i>Story (GRAND) - SSE Holdco LLC</i>	00000014DCHT00564851, 00000090ESFB63917979
<i>Story (Lake Havasu) - Curious Cultivators I LLC</i>	0000155ESTWD37312465
<i>Story (MCDOWELL) - SSE Holdco LLC</i>	00000088DCXB00897085, 00000092ESKW00353670
<i>Story (North Chandler) - Total Health & Wellness Inc</i>	00000100DCWU00857159, 00000021ESQX24132908
<i>Story (South Chandler) - MCCSE29, LLC</i>	0000149ESTUL49249395
<i>Story (Tolleson) - CRG Holdco LLC</i>	00000104ESDH57805022, 00000055DCDA00381095
<i>Story (WILLIAMS) - Joint Junkies I LLC</i>	0000158ESTLH17620655
<i>Story(KINGMAN) - Juicy Joint I LLC</i>	0000147ESTXX54706468
<i>Superior Dispensary - Superior Organics</i>	00000065DCLV00799347
<i>The Flower Shop (HUB Phoenix) - Nature's Healing Center Inc</i>	00000041ESLU31226658
<i>The Flower Shop (Mesa) - Buds & Roses, Inc</i>	00000132DCYB00654510
<i>The Flower Shop(Ahwatukee) - Nature's Healing</i>	00000046DCYJ00671222, 00000031ESCS44452076
<i>The Good Dispensary - Valley Healing Group Inc</i>	00000048DCCKJ00945635, 00000072ESRF58078256
<i>The Mint (75TH) - M&T RETAIL FACILITY</i>	00000080DCQI00709964, 00000101ESZO30906924
<i>The Mint (PHOENIX) - UNCLE HARRY CORP</i>	00000129ESRG43839179, 00000110DCDE00541508
<i>The Mint (HUB) - G.T.L. Llc</i>	000161ESTOJ23023764, 00000128DCNB00202967
<i>The Mint (Mesa) - 4245 Investments LLC</i>	00000036ESXU42814428, 00000136DCKS00208201
<i>The Mint (NORTHERN) - GTL LLC</i>	00000128DCNB0020296, 00000034ESEZ92106085
<i>The Mint (Scottsdale) - Eba Holdings Inc.</i>	00000068ESZM96727661, 00000072DCMU00762354
<i>The Prime Leaf (Park) - Total Accountability Patient Care</i>	00000025DCPT00084389
<i>The Prime Leaf (Speedway) - Rainbow Collective Inc</i>	00000039DCVR00320237, 00000124ESOS02903622
<i>Tru Med - AZ Compassionate Care Inc</i>	00000079DCUU00478781
<i>TRUBLISS - Sea of Green Llc</i>	00000113DCUX00454549, 00000057ESJG92466754
<i>Trulieve (Apache Junction)- Svaccha, LLC</i>	00000011ESVC04035599, 00000137DCOF00188324
<i>Trulieve (Avondale) - High Desert Healing LLC</i>	00000007DCWH00607422
<i>Trulieve (Baseline) - Nature Med Inc</i>	00000018DCST00941489
<i>Trulieve (Casa Grande) - Medical Pain Relief</i>	00000044DCCJ00900645
<i>Trulieve (Chandler) - High Desert Healing LLC.</i>	00000005DCMV00766195
<i>Trulieve (Cottonwood) - Sherri Dunn LLC.</i>	000000124DCKQ00697385 00000055ESFL28376770
<i>Trulieve (Glendale) - Pahana LLC.</i>	00000129DCKL00602472 00000018ESKD27426528
<i>Trulieve (HUB) - Green Sky Patient Center Of Scottsdale</i>	00000081ESLT56066782
<i>Trulieve (N. Mesa) - Sweet 5, LLC</i>	00000013ESHH20255089, 00000115DCGL00377020
<i>Trulieve (Peoria) - Green Desert Patient Center of Peoria</i>	00000082ESUB29429633, 00000023DCAK00675039
<i>Trulieve (Phoenix Alhambra/Urban Greenhouse) - AD LLC</i>	00000092DCEG00124317
<i>Trulieve (Phoenix/Peoria Ave) - Kwerles Inc.</i>	00000125DCWD00787544 00000005ESIN89499585
<i>Trulieve (Roosevelt Row) - Mohave Valley Consulting LLC</i>	00000017ESMI32133238, 00000121DCLW00319285
<i>Trulieve (S. Mesa) - The Giving Tree Wellness Center of Mesa Inc</i>	00000008ESJT20615662, 00000084DCXM00601985
<i>Trulieve (Scottsdale) - Byers Dispensary</i>	00000054dcov00321891 00000003ESPFF54627423
<i>Trulieve (Scottsdale/Butherus) - Green Sky Patient Center of Scottsdale</i>	00000081ESLT56066782, 00000022DCRX00190936
<i>Trulieve (Tatum) - Abedon Saiz LLC</i>	00000052ESLX15969554, 00000135DCSM00130984
<i>Trulieve (Tempe) - Svaccha LLC</i>	00000120DCEQ00578528 00000009ESJA48286920
<i>Trulieve (Tucson/22nd St) - Fort Mountain Consulting, LLC</i>	00000016ESBY46918805, 00000134DCUJ00307958
<i>Trulieve (Tucson/Grant) - Patient Care Center 301, Inc.</i>	000000127DCSS00185167
<i>Trulieve (Tucson/Mento Park) - Purplemed Inc</i>	00000130ESFL12611544, 00000056DCLD00291476
<i>Trulieve(Sierra Vista) - Cochise County Wellness LLC</i>	00000135ESGE19332725
<i>Tucson SAINTS - Green Medicine</i>	00000094ESMX02282810, 00000071DCCX00288765
<i>Valley of The Sun - Valley of The Sun Medical Dispensary, Inc</i>	00000083DCYO00463840
<i>White Mountain Health Center - White Mountain Health Center Inc</i>	00000103DCDR00369521, 00000083ESGB09219996
<i>Zen Leaf (Cave Creek) - Fort Consulting, Llc</i>	00000064ESAK09838873, 00000105DCOU00194638
<i>Zen Leaf (Chandler) - AZGM 3, LLC</i>	00000040ESDX57445071, 00000126DCSO00060479
<i>Zen Leaf (Dunlap) - Perpetual Healthcare, LLC</i>	00000105ESDR54985961, 00000033DCKK00134006

Zen Leaf (Gilbert) - Vending Logistics Llc	00000043ESPE02331128, 00000112DCLK00614860
Zen Leaf (Local Joint)/ARCADIA- Patient Alternative Relief Center, LLC	00000086ESQZ01367420, 00000091DCWY00555666
Zen Leaf (Mesa) - The Medicine Room Llc	00000084ESFH12297246, 00000037DCDM00904008