



Jeeter
 2626 South Roosevelt Street
 Tempe, AZ 85282
 License #: 00000066DCBO00410690
 Sample ID: 2605SMAZ1116.3975
 Batch #: JJLD-ACAGOL-051826



CERTIFICATE OF ANALYSIS
 License #: 00000020LCVT89602592

Certificate: 24783

Cannabinoid Profile

HPLC

Tested

Sample Prep

Batch Date: 05/22/2026
 SOP: 418.AZ
 Batch Number: 6121
 Test ID: 138981

Sample Analysis

Date: 05/26/2026
 SOP: 417.AZ - HPLC
 Sample Weight: 0.0435 g
 Volume: 40 mL

Analyte	LOD (mg/g)	LOQ (mg/g)	Dil.	Actual % (w/w)	mg/g	Qualifier
CBC	0.5920	1.7970	2	0.5784	5.7840	M1
CBD	0.5920	1.7970	2	0.2753	2.7530	M1
CBDA	0.5920	1.7970	2	ND	ND	M1
CBDV	0.5920	1.7970	2	ND	ND	M1
CBG	0.5920	1.7970	2	2.2233	22.2330	M1
CBGA	0.5920	1.7970	2	ND	ND	M1
CBN	0.5920	1.7970	2	0.5646	5.6460	M1
d8-THC	0.5920	1.7970	2	ND	ND	M1
d9-THC	0.5920	1.7970	2	89.2401	892.4010	M1
THCA	0.5920	1.7970	2	0.1953	1.9530	M1
THCV	0.5920	1.7970	2	0.5199	5.1990	M1

Cannabinoid Totals	Actual % (w/w)	mg/g	Qualifier
Total THC	89.4114	894.1140	
Total CBD	0.2753	2.7530	
Total Cannabinoids	93.5969	935.9690	Q3

Total THC = THC + (0.877 x THCA) and Total CBD = CBD + (0.877 x CBDA)
 ND = Not Detected, NT = Not Tested, <LOQ = Below Limit of Quantitation

Ahmed Munshi

Technical Laboratory Director

Smithers CTS Arizona LLC
 734 W Highland Avenue, 2nd Floor
 Phoenix, AZ 85013
 (602) 806-6930



The product associated with this COA has been tested by Smithers CTS Arizona LLC, using validated state certified testing methodologies as required by Arizona state law. Testing results were obtained according to Smithers' quality assurance plan and requirements found in R9-17-404.03 and R9-17-404.04. This COA is governed by the terms and conditions listed on: <https://www.smithers.com/arizona-terms-conditions>



Jeeter
 2626 South Roosevelt Street
 Tempe, AZ 85282
 License #: 00000066DCBO00410690
 Sample ID: 2605SMAZ1116.3975
 Batch #: JJLD-ACAGOL-051826



CERTIFICATE OF ANALYSIS
 License #: 00000020LCVT89602592

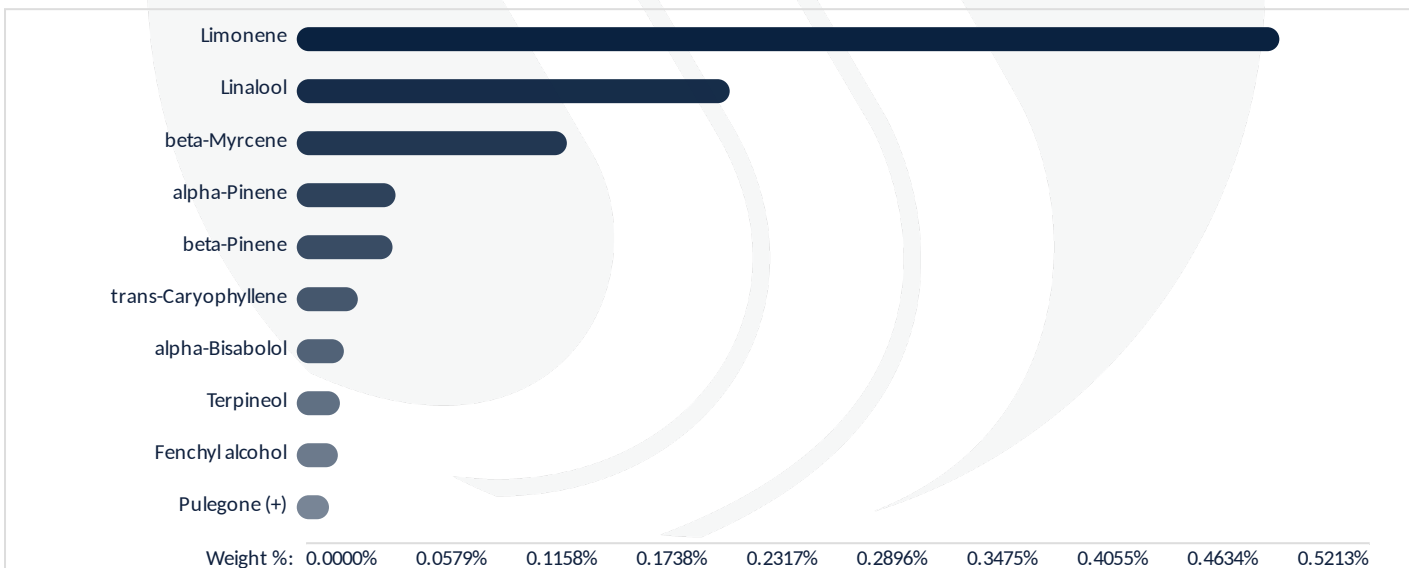
Certificate: 24783

Terpene Total
 GC-FID **Tested (1.1902%)**

Sample Prep
 Batch Date: 05/26/2026
 SOP: 419
 Batch Number: 6123

Sample Analysis
 Date: 05/27/2026
 SOP: 419 - GC-FID
 Sample Weight: 0.4071 g
 Volume: 10 mL

Analyte	LOD / LOQ (%)	Dil.	Results (%)	Qualifier	Analyte	LOD / LOQ (%)	Dil.	Results (%)	Qualifier
alpha-Bisabolol	0.0010 / 0.0029	1	0.0250	Q3	gamma-Terpinene	0.0010 / 0.0029	1	0.0043	Q3
alpha-Cedrene	0.0010 / 0.0029	1	ND	Q3	Geraniol	0.0010 / 0.0029	1	ND	Q3
alpha-Humulene	0.0010 / 0.0029	1	0.0054	Q3	Geranyl acetate	0.0010 / 0.0029	1	ND	Q3
alpha-Phellandrene	0.0010 / 0.0029	1	ND	Q3	Guaiol	0.0010 / 0.0029	1	ND	Q3
alpha-Pinene	0.0010 / 0.0029	1	0.0524	Q3	Hexahydrothymol	0.0010 / 0.0029	1	ND	Q3
alpha-Terpinene	0.0010 / 0.0029	1	ND	Q3	Isoborneol	0.0010 / 0.0029	1	ND	Q3
beta-Myrcene	0.0010 / 0.0029	1	0.1433	Q3	Isopulegol	0.0010 / 0.0029	1	ND	Q3
beta-Pinene	0.0010 / 0.0029	1	0.0508	Q3	Limonene	0.0010 / 0.0029	1	0.5213	Q3
Borneol	0.0010 / 0.0029	1	<LOQ	Q3	Linalool	0.0010 / 0.0029	1	0.2297	Q3
Camphene	0.0010 / 0.0029	1	0.0160	Q3	Nerol	0.0010 / 0.0029	1	ND	Q3
Camphor	0.0010 / 0.0029	1	ND	Q3	Pulegone (+)	0.0010 / 0.0029	1	0.0171	Q3
3-Carene	0.0010 / 0.0029	1	ND	Q3	Sabinene Hydrate	0.0010 / 0.0029	1	ND	Q3
Caryophyllene oxide	0.0010 / 0.0029	1	0.0104	Q3	Terpineol	0.0010 / 0.0029	1	0.0229	Q3
Cedrol	0.0010 / 0.0029	1	0.0066	Q3	Terpinolene	0.0010 / 0.0029	1	0.0110	Q3
cis-Nerolidol	0.0010 / 0.0029	1	ND	Q3	trans-Caryophyllene	0.0010 / 0.0029	1	0.0324	Q3
cis-Ocimene	0.0010 / 0.0029	1	0.0043	Q3	trans-Nerolidol	0.0010 / 0.0029	1	0.0051	Q3
Fenchyl alcohol	0.0010 / 0.0029	1	0.0218	Q3	trans-Ocimene	0.0010 / 0.0029	1	0.0104	Q3
Eucalyptol	0.0010 / 0.0029	1	<LOQ	Q3	Valencene	0.0010 / 0.0029	1	ND	Q3
Fenchone	0.0010 / 0.0029	1	ND	Q3					



Ahmed Munshi
 Technical Laboratory Director

Ahmed Munshi

Smithers CTS Arizona LLC
 734 W Highland Avenue, 2nd Floor
 Phoenix, AZ 85013
 (602) 806-6930



The product associated with this COA has been tested by Smithers CTS Arizona LLC, using validated state certified testing methodologies as required by Arizona state law. Testing results were obtained according to Smithers' quality assurance plan and requirements found in R9-17-404.03 and R9-17-404.04. This COA is governed by the terms and conditions listed on: <https://www.smithers.com/arizona-terms-conditions>



Jeeter
 2626 South Roosevelt Street
 Tempe, AZ 85282
 License #: 00000066DCBO00410690
 Sample ID: 2605SMAZ1116.3975
 Batch #: JJLD-ACAGOL-051826



CERTIFICATE OF ANALYSIS
 License #: 00000020LCVT89602592

Certificate: 24783

Microbial Analysis
Pass

Sample Prep

Batch Date: 05/26/2026
 SOP: 412.AZ
 Batch Number: 6126
 Test ID: 138989

Sample Analysis

Date: 05/27/2026
 SOP: 412.AZ - 3M Petrifilm
 Sample Weight: 1.0484 g

Analyte	Allowable Criteria	Actual Result	Pass/Fail	Qualifier
E. coli	< 100 CFU/g	< 10 CFU/g	Pass	

Sample Prep

Batch Date: 05/26/2026
 SOP: 406.AZ
 Batch Number: 6128
 Test ID: 138990

Sample Analysis

Date: 05/27/2026
 SOP: 406.AZ - qPCR (MG)
 Sample Weight: 1.0104 g

Analyte	Allowable Criteria	Actual Result	Pass/Fail	Qualifier
Salmonella	Not Detected in One Gram	Not Detected in One Gram	Pass	

Sample Prep

Batch Date: 05/26/2026
 SOP: 406.AZ
 Batch Number: 6124
 Test ID: 138991

Sample Analysis

Date: 05/27/2026
 SOP: 406.AZ - qPCR (MG)
 Sample Weight: 1.0104 g

Analyte	Allowable Criteria	Actual Result	Pass/Fail	Qualifier
Aspergillus flavus	Not Detected in One Gram	Not Detected in One Gram	Pass	
Aspergillus fumigatus	Not Detected in One Gram	Not Detected in One Gram	Pass	
Aspergillus niger	Not Detected in One Gram	Not Detected in One Gram	Pass	
Aspergillus terreus	Not Detected in One Gram	Not Detected in One Gram	Pass	

Ahmed Munshi

Technical Laboratory Director

Smithers CTS Arizona LLC

734 W Highland Avenue, 2nd Floor
 Phoenix, AZ 85013
 (602) 806-6930



Accreditation #: 103104

The product associated with this COA has been tested by Smithers CTS Arizona LLC, using validated state certified testing methodologies as required by Arizona state law. Testing results were obtained according to Smithers' quality assurance plan and requirements found in R9-17-404.03 and R9-17-404.04. This COA is governed by the terms and conditions listed on: <https://www.smithers.com/arizona-terms-conditions>



Jeeter
 2626 South Roosevelt Street
 Tempe, AZ 85282
 License #: 00000066DCBO00410690
 Sample ID: 2605SMAZ1116.3975
 Batch #: JJLD-ACAGOL-051826



CERTIFICATE OF ANALYSIS
 License #: 00000020LCVT89602592

Certificate: 24783

Residual Solvents

HS-GC-MS **Pass**

Sample Prep
 Batch Date: 05/26/2026
 SOP: 405.AZ
 Batch Number: 6122
 Test ID: 138982

Sample Analysis
 Date: 05/27/2026
 SOP: 405.AZ - HS-GC-MS
 Sample Weight: 0.0505 g

Analyte	LOD / LOQ (ppm)	Dil.	Action Limit (ppm)	Results (ppm)	Qualifier	Analyte	LOD / LOQ (ppm)	Dil.	Action Limit (ppm)	Results (ppm)	Qualifier
Acetone	132 / 396	1	1000	ND		Heptane	659 / 1980	1	5000	ND	
Acetonitrile	54 / 162	1	410	ND		Hexanes	38 / 115	1	290	ND	
Benzene	0.26 / 0.79	1	2	ND		Isopropyl acetate	659 / 1980	1	5000	ND	
Butanes	165 / 495	1	5000	ND		Methanol	396 / 1188	1	3000	ND	
Chloroform	8 / 24	1	60	ND		Pentanes	165 / 495	1	5000	ND	
Dichloromethane	79 / 238	1	600	ND		2-Propanol (IPA)	659 / 1980	1	5000	ND	
Ethanol	659 / 1980	1	5000	ND		Toluene	117 / 352	1	890	ND	
Ethyl acetate	659 / 1980	1	5000	ND		Xylenes	287 / 859	1	2170	ND	
Ethyl ether	659 / 1980	1	5000	ND							

Ahmed Munshi
 Technical Laboratory Director

Smithers CTS Arizona LLC
 734 W Highland Avenue, 2nd Floor
 Phoenix, AZ 85013
 (602) 806-6930



The product associated with this COA has been tested by Smithers CTS Arizona LLC, using validated state certified testing methodologies as required by Arizona state law. Testing results were obtained according to Smithers' quality assurance plan and requirements found in R9-17-404.03 and R9-17-404.04. This COA is governed by the terms and conditions listed on: <https://www.smithers.com/arizona-terms-conditions>



Jeeter
 2626 South Roosevelt Street
 Tempe, AZ 85282
 License #: 00000066DCBO00410690
 Sample ID: 2605SMAZ1116.3975
 Batch #: JJLD-ACAGOL-051826



CERTIFICATE OF ANALYSIS
 License #: 00000020LCVT89602592

Certificate: 24783

Heavy Metals

ICP-MS **Pass**

Sample Prep
 Batch Date: 05/26/2026
 SOP: 428.AZ
 Batch Number: 6129
 Test ID: 138983

Sample Analysis
 Date: 05/27/2026
 SOP: 428.AZ - ICP-MS
 Sample Weight: 0.2340 g
 Volume: 6 mL

Analyte	LOD (ppm)	LOQ (ppm)	Dil.	Action Limit (ppm)	Results (ppm)	Qualifier
Arsenic	0.051	0.171	10	0.4	ND	
Cadmium	0.051	0.171	10	0.4	ND	
Lead	0.051	0.427	10	1	ND	
Mercury	0.051	0.085	10	0.2	ND	

Mycotoxin Analysis

LC-MS/MS **Pass**

Sample Prep
 Batch Date: 05/21/2026
 SOP: 432.AZ
 Batch Number: 6110
 Test ID: 138986

Sample Analysis
 Date: 05/26/2026
 SOP: 424.AZ - LC-MS/MS
 Sample Weight: 0.5134 g
 Volume: 12.5 mL

Analyte	LOD (ppb)	LOQ (ppb)	Dil.	Action Limit (ppb)	Results (ppb)	Qualifier
Total Aflatoxins	3.90	9.74	1	20	ND	
Aflatoxin B1	3.90	9.74	1		ND	I1
Aflatoxin B2	3.90	9.74	1		ND	I1
Aflatoxin G1	3.90	9.74	1		ND	
Aflatoxin G2	3.90	4.87	1		ND	I1
Ochratoxin A	9.74	9.74	1	20	ND	I1, V1

Ahmed Munshi
 Technical Laboratory Director

Smithers CTS Arizona LLC
 734 W Highland Avenue, 2nd Floor
 Phoenix, AZ 85013
 (602) 806-6930



The product associated with this COA has been tested by Smithers CTS Arizona LLC, using validated state certified testing methodologies as required by Arizona state law. Testing results were obtained according to Smithers' quality assurance plan and requirements found in R9-17-404.03 and R9-17-404.04. This COA is governed by the terms and conditions listed on: <https://www.smithers.com/arizona-terms-conditions>



Jeeter
 2626 South Roosevelt Street
 Tempe, AZ 85282
 License #: 00000066DCBO00410690
 Sample ID: 2605SMAZ1116.3975
 Batch #: JJLD-ACAGOL-051826



CERTIFICATE OF ANALYSIS
 License #: 00000020LCVT89602592

Certificate: 24783

**Pesticides, Fungicides, and
 Growth Regulators**
 LC-MS/MS **Pass**

Sample Prep

Batch Date: 05/21/2026
 SOP: 432.AZ
 Batch Number: 6110
 Test ID: 138985

Sample Analysis

Date: 05/26/2026
 SOP: 424.AZ - LC-MS/MS
 Sample Weight: 0.5134 g
 Volume: 12.5 mL

Analyte	LOD / LOQ (ppm)	Dil.	Action Limit (ppm)	Results (ppm)	Qualifier	Analyte	LOD / LOQ (ppm)	Dil.	Action Limit (ppm)	Results (ppm)	Qualifier
Abamectin B1a	0.081 / 0.243	1	0.5	ND	L1 V1	Hexythiazox	0.163 / 0.487	1	1	ND	
Acephate	0.065 / 0.195	1	0.4	ND		Imazalil	0.032 / 0.097	1	0.2	ND	I1
Acetamiprid	0.032 / 0.097	1	0.2	ND		Imidacloprid	0.065 / 0.195	1	0.4	ND	
Aldicarb	0.065 / 0.195	1	0.4	ND		Kresoxim-methyl	0.065 / 0.195	1	0.4	ND	
Azoxystrobin	0.032 / 0.097	1	0.2	ND		Malathion	0.032 / 0.097	1	0.2	ND	
Bifenazate	0.032 / 0.097	1	0.2	ND		Metaxyl	0.032 / 0.097	1	0.2	ND	
Bifenthrin	0.032 / 0.097	1	0.2	ND		Methiocarb	0.032 / 0.097	1	0.2	ND	
Boscalid	0.065 / 0.195	1	0.4	ND	L1	Methomyl	0.065 / 0.195	1	0.4	ND	
Carbaryl	0.032 / 0.097	1	0.2	ND		Myclobutanil	0.032 / 0.097	1	0.2	ND	
Carbofuran	0.032 / 0.097	1	0.2	ND		Naled	0.081 / 0.243	1	0.5	ND	
Chlorantraniliprole	0.032 / 0.097	1	0.2	ND		Oxamyl	0.163 / 0.487	1	1	ND	
Chlorfenapyr	0.163 / 0.487	1	1	ND		Pacllobutrazol	0.065 / 0.195	1	0.4	ND	
Chlorpyrifos	0.032 / 0.097	1	0.2	ND		Permethrins	0.032 / 0.097	1	0.2	ND	
Clofentezine	0.032 / 0.097	1	0.2	ND		Phosmet	0.032 / 0.097	1	0.2	ND	
Cyfluthrin	0.163 / 0.487	1	1	ND	L1 V1	Piperonyl Butoxide	0.324 / 0.974	1	2	ND	
Cypermethrin	0.163 / 0.487	1	1	ND		Prallethrin	0.032 / 0.097	1	0.2	ND	
Daminozide	0.163 / 0.487	1	1	ND		Propiconazole	0.065 / 0.195	1	0.4	ND	
Diazinon	0.032 / 0.097	1	0.2	ND		Propoxur	0.032 / 0.097	1	0.2	ND	
Dichlorvos	0.017 / 0.049	1	0.1	ND		Pyrethrins	0.136 / 0.408	1	1	ND	
Dimethoate	0.032 / 0.097	1	0.2	ND		Pyridaben	0.032 / 0.097	1	0.2	ND	
Ethoprophos	0.032 / 0.097	1	0.2	ND		Spinosad	0.032 / 0.097	1	0.2	ND	
Etofenprox	0.065 / 0.195	1	0.4	ND		Spiromesifen	0.032 / 0.097	1	0.2	ND	
Etoxazole	0.032 / 0.097	1	0.2	ND		Spirotetramat	0.032 / 0.097	1	0.2	ND	
Fenoxycarb	0.032 / 0.097	1	0.2	ND		Spiroxamine	0.065 / 0.195	1	0.4	ND	
Fenpyroximate	0.065 / 0.195	1	0.4	ND		Tebuconazole	0.065 / 0.195	1	0.4	ND	
Fipronil	0.065 / 0.195	1	0.4	ND	L1 V1	Thiacloprid	0.032 / 0.097	1	0.2	ND	
Fonicamid	0.163 / 0.487	1	1	ND		Thiamethoxam	0.032 / 0.097	1	0.2	ND	
Fludioxonil	0.065 / 0.195	1	0.4	ND		Trifloxystrobin	0.032 / 0.097	1	0.2	ND	

Ahmed Munshi
 Technical Laboratory Director

Ahmed Munshi

Smithers CTS Arizona LLC
 734 W Highland Avenue, 2nd Floor
 Phoenix, AZ 85013
 (602) 806-6930



The product associated with this COA has been tested by Smithers CTS Arizona LLC, using validated state certified testing methodologies as required by Arizona state law. Testing results were obtained according to Smithers' quality assurance plan and requirements found in R9-17-404.03 and R9-17-404.04. This COA is governed by the terms and conditions listed on: <https://www.smithers.com/arizona-terms-conditions>



Jeeter
 2626 South Roosevelt Street
 Tempe, AZ 85282
 License #: 00000066DCBO00410690
 Sample ID: 2605SMAZ1116.3975
 Batch #: JJLD-ACAGOL-051826



CERTIFICATE OF ANALYSIS
 License #: 00000020LCVT89602592

Certificate: 24783

Qualifier Legend

- B1** The target analyte detected in the calibration is at or above the limit of quantitation, but the sample result for potency testing, is below the limit of quantitation.
- B2** The target analyte detected in the calibration blank, or the method blank is at or above the limit of quantitation, but the sample result when testing for pesticides, fungicides, herbicides, growth regulators, heavy metals, or residual solvents, is below the maximum allowable concentration for the analyte.
- D1** The limit of quantitation and the sample results were adjusted to reflect sample dilution.
- I1** The relative intensity of a characteristic ion in a sample analyte exceeded the acceptance with respect to the reference spectra, indicating interference.
- L1** When testing for pesticides, fungicides, herbicides, growth regulators, heavy metals, or residual solvents, the percent recovery of a laboratory control sample is greater than the acceptance limits, but the sample's target analytes were not detected above the maximum allowable concentrations for the analytes in the sample.
- M1** The recovery from the matrix spike was high, but the recovery from the laboratory control sample was within acceptance criteria.
- M2** The recovery from the matrix spike was low, but the recovery from the laboratory control sample was within acceptance criteria.
- M3** The recovery from the matrix spike was unusable because the analyte concentration was disproportionate to the spike level, but the recovery from the laboratory control sample was within acceptance criteria.
- M4** The analysis of a spiked sample required a dilution such that the spike recovery calculation does not provide useful information, but the recovery from the associated laboratory control sample was within acceptance criteria.
- M5** The analyte concentration was determined by the method of standard addition, in which the standard is added directly to the aliquots of the analyzed sample.
- M6** A description of the variance is described in the final report of testing according to R9-17- 404.06(B)(3)(d)(ii).
- Q1** Sample integrity was not maintained.
- Q2** The sample is heterogeneous, and sample homogeneity could not be readily achieved using routine laboratory practices.
- Q3** Testing result is for informational purposes only and cannot be used to satisfy dispensary testing requirements in R9-17-317.01(A) or labeling requirements in R9-17-317.
- R1** The relative percent difference for the laboratory control sample and duplicate exceeded the limit, but the recovery was within acceptance criteria.
- R2** The relative percent difference for a sample and duplicate exceeded the limit.
- V1** The recovery from continuing calibration verification standards exceeded the acceptance limits, but the sample's target analytes were not detected above the maximum allowable for the analytes in the sample.

Cultivated By:

Manufactured By:

Disclaimer: Using marijuana during pregnancy could cause birth defects or other health issues to your unborn child.

Ahmed Munshi

Technical Laboratory Director

Smithers CTS Arizona LLC
 734 W Highland Avenue, 2nd Floor
 Phoenix, AZ 85013
 (602) 806-6930



The product associated with this COA has been tested by Smithers CTS Arizona LLC, using validated state certified testing methodologies as required by Arizona state law. Testing results were obtained according to Smithers' quality assurance plan and requirements found in R9-17-404.03 and R9-17-404.04. This COA is governed by the terms and conditions listed on: <https://www.smithers.com/arizona-terms-conditions>



Jeeter
 2626 South Roosevelt Street
 Tempe, AZ 85282
 License #: 00000066DCBO00410690
 Sample ID: 2605SMAZ1116.3975
 Batch #: JJLD-ACAGOL-051826



CERTIFICATE OF ANALYSIS
 License #: 00000020LCVT89602592

Certificate: 24783

Notes: Method of Extraction: Butane



Ahmed Munshi

Technical Laboratory Director

Smithers CTS Arizona LLC
 734 W Highland Avenue, 2nd Floor
 Phoenix, AZ 85013
 (602) 806-6930



Accreditation #: 103104

The product associated with this COA has been tested by Smithers CTS Arizona LLC, using validated state certified testing methodologies as required by Arizona state law. Testing results were obtained according to Smithers' quality assurance plan and requirements found in R9-17-404.03 and R9-17-404.04. This COA is governed by the terms and conditions listed on: <https://www.smithers.com/arizona-terms-conditions>

Final Product Information:	
Product Form	1G VAPE CARTRIDGE
Strain	ACAPULCO GOLD
Batch Number	JJLD-ACAGOL-051826
Date of Manufacture	5/18/2026
Concentrate Information:	
Type(s)	Liquid Diamonds
Strain(s)	DSV LD
Batch Number(s)	LD022426
Extraction Date (s)	2/13/2026
Extraction Type(s)	BUTANE
Manufactured By	Life Changers Investments LLC # 0000156ESTDP70697204 White Mountain Health Center Inc (00000103DCDR00369521)
Concentrate Input Flower Information:	
Strain/Batch ID	Harvest Date/Cultivator License #
BLACK CRANBERRY - AZRTBC-260213-027	2/13/2026 - White Mountain Health Center Inc (00000103DCDR00369521)
BCCxJxCB - AZRTBCJxCB-260213-026	2/13/2026 - White Mountain Health Center Inc (00000103DCDR00369521)
DARK QUEEN - AZRTDQ-260213-030	2/13/2026 - White Mountain Health Center Inc (00000103DCDR00369521)
GRAPE GOTTI - AZRTGG-260213-034	2/13/2026 - White Mountain Health Center Inc (00000103DCDR00369521)
GYAT - AZRTGYT-260213-032	2/13/2026 - White Mountain Health Center Inc (00000103DCDR00369521)
ICE CREAM CKE - AZRTICC-260213-035	2/13/2026 - White Mountain Health Center Inc (00000103DCDR00369521)
LCGXQTS - AZRTLXGXQTS-260213-036	2/13/2026 - White Mountain Health Center Inc (00000103DCDR00369521)
MULE FUEL - AZRTMF-260213-046	2/13/2026 - White Mountain Health Center Inc (00000103DCDR00369521)
MARSHMALLOW MOUNTAIN - AZRTMM-260213-040	2/13/2026 - White Mountain Health Center Inc (00000103DCDR00369521)
MONKEY PASTE - AZRTMPST-260213-043	2/13/2026 - White Mountain Health Center Inc (00000103DCDR00369521)
MRxLCG - AZRTMRXLCG-260213-039	2/13/2026 - White Mountain Health Center Inc (00000103DCDR00369521)
NEXT LEVEL - AZRTNLVL-260213-047	2/13/2026 - White Mountain Health Center Inc (00000103DCDR00369521)
PLANET BANG BANG - AZRTPBB-260213-051	2/13/2026 - White Mountain Health Center Inc (00000103DCDR00369521)
PINK CERTZ - AZRTPC-260213-054	2/13/2026 - White Mountain Health Center Inc (00000103DCDR00369521)
PURPLE LIMEADE - AZRTPLL-260213-057	2/13/2026 - White Mountain Health Center Inc (00000103DCDR00369521)
TROP CHERRY - AZRTTC-260213-058	2/13/2026 - White Mountain Health Center Inc (00000103DCDR00369521)
WHOZEE WHATS THAT - AZRTWWT-260213-061	2/13/2026 - White Mountain Health Center Inc (00000103DCDR00369521)
LCGXQTS - 013026LCGXQTSRM5	2/13/2026 - White Mountain Health Center Inc (00000103DCDR00369521)
MARSHMALLOW MOUNTAIN - 013026MMRM7	2/13/2026 - White Mountain Health Center Inc (00000103DCDR00369521)
WHOZEE WHATS THAT - 013026WWTRM5	2/13/2026 - White Mountain Health Center Inc (00000103DCDR00369521)
Finished Product Distribution Chain:	
Manufactured/Cultivated By	Ponderosa Botanical care inc. # 00000066DCBO00410690
Packaged By	Ponderosa Botanical care inc. # 00000066DCBO00410690
Distributed By	Ponderosa Botanical care inc. # 00000066DCBO00410690
Arizona Dept. of Health Services Warning	Using marijuana during pregnancy could cause birth defects or other health issues to your unborn child
Intended Point of Sale Locations	
Marijuana Establishment Name	Marijuana Establishment License Number

All Greens - All Greens Inc	0000011DCMZ00182361, 00000033ESLY55591549
Altitude Dispensary - Arizona Wellness Center	0000142DRCLD76170272
Arizona Natural Concepts - RJK Ventures, Inc.	00000131DCYO00924714
Arizona Organix - Arizona Organix	00000099DCPL00826691, 00000095ESIP13817359
AZCS - Arizona Cannabis Society Inc	00000090DCYT00194857, 00000042ESJB38310180
Consume Show Low - Compassionate Care of AZ, INC.	00000068DCJU00476804, 00000091ESH96689917
Curaleaf (48th St) - All Rebel Rockers Inc	00000131ESYX97720376, 00000117DCBN00282429
Curaleaf (Bell Rd) - Devine Desert Healing Inc	00000107DCFT00824215
Curaleaf (Camelback) - Healing Healthcare 3 Inc	00000047DCOU00565305, 00000020ESEN67630727
Curaleaf (East Glendale) - Whoa QC Inc	00000069ESPV40435704, 00000042DCSI00109560
Curaleaf (Gilbert) - Absolute Health Care Inc	00000027ESMP88938972, 00000034DCOD00007550
Curaleaf (Glendale) - PP Wellness Center	00000050ESTO08528992, 00000010DCID00070698
Curaleaf (Midtown) - Catalina Hills Botanical Care Inc	00000016DCCC00020807, 00000025ESOX62486193
Curaleaf (Pavilions) - Phytotherapeutics Of Tucson	00000049ESUK39624376, 00000029DCRV00169614
Curaleaf (Peoria) - Pinal County Wellness Center	00000059ESZW76539792, 00000020DCGM00200033
Curaleaf (Phx Airport) - Zonacare	00000024ESUV84524312, 00000087DCIX00681297
Curaleaf (Scottsdale) - Natural Remedy Patient Center	00000125ESMC92036121, 00000064DCTS00268592
Curaleaf (Sedona) - Arizona Natures Wellness	00000030ESDG72791381, 00000082DCYU00561946
Curaleaf (Tucson) - AZCL1	00000054ESDU93884651, 00000040DCOV00144711
Curaleaf (Youngtown) - K Group Partners Llc	00000076DCBK00035366, 00000029ESAA16670843
Curaleaf(Hub) - Natural Herbal Remedies Inc	00000058ESFA63267513, 00000053DCXB00858835
D2 Dispensary - 46 Wellness Llc	00000116DCJL00597353, 00000128ESJI00619914
D2 Dispensary (Oracle) - The Green Halo Llc	00000026DCOM00244803, 00000120ESGW29293058
Deeply Rooted - Desert Boyz	0000153ESTXW47689762
Desert Bloom ReLeaf Center - Medmar, Tanque Verde Llc	00000039ESEZ33667642, 00000081DCPK00962019
Downtown Dispensary - Forever 46 Llc	00000057DCHF00477864, 00000126ESDQ50929013
Earth's Healing (North) - Globe Farmacy Inc	00000108ESND56774062, 00000045DCYU00647140
Earth's Healing (South) - Earth's Healing Inc	00000112ESWR37460976, 00000027DCPI00457346
EBA Holdings, INC	00000068ESZM96727661, 00000072DCMU00762354
Farm Fresh - Fwa Inc	00000062ESGQ60020478
Giving Tree Dispensary- The Giving Tree Wellness Center Of North Phoenix Inc.	000000021DCLU00461342, 00000023ESLL63816994
GreenPharms (Flagstaff) - Desertview Wellness & Healing Solutions, LLC	00000038DCAL00224416, 00000077ESTT45790153
Greenpharms (Mesa) - The Healing Center Farmacy Llc	00000004DCKF00438872, 00000074ESMJ87013698
Halo Cannabis - Blue Palo Verde 1, LLC	0000150ESTPZ83854528
Hana Meds (Green Valley) - Broken Arrow Herbal Center Inc	00000096DCXQ00231932 00000102ESWC76772229
Hana Meds (Phoenix) - CJK INC	00000003DCOU00038157 00000106ESEU57773093
Health for Life (Crismon) - The Healing Center Wellness Center	00000041DCEN00861221 00000115ESJB22990289
Herbal Wellness Hub - Herbal Wellness Center Inc	00000086DCKR00375578, 00000032ESPT83532730
Jars (24th St & University) - Dream Green Inc	00000078ESQG10647381
Jars (Arcadia) - Legacy & Co, Inc	00000079ESTS64678211
Jars (BullHead City) - MCCSE82	0000165ESTJX05511145
Jars (Cave Creek) - Wickenburg Alternative Medicine Llc	00000061DCMK00381513, 00000097ESKC38985532
Jars (El Mirage) - MCCSE240, LLC	0000169ESTMB88870542
Jars (Kingman) - MCCSE214, LLC	0000164ESTEB22806734
Jars (Mesa) - Mohave Cannabis Club 1	00000098ESAA47054477, 00000002DCJK00811479
Jars (Metro) - Desert Medical Campus	00000024DCTZ00479209, 00000038ESP59181329
Jars (Mohave Globe) - Lawrence Health Services LLC	00000136ESTJ56415147
Jars (Mohave Safford) - Piper's Shop LLC	00000138ESOA91816349
Jars (New River) - MCCSE82	0000165ESTJX05511145
Jars (Payson) - Gila Dreams X, LLC	00000137ESPF58509627
Jars (Peoria) - Mohave Cannabis Club 2, LLC	00000119ESKK32735375
Jars (Phoenix) - Mohave Cannabis Club 3, LLC	00000133DCEJ00283862, 00000122ESRN95872973
Jars (Prescott Valley) - Mohave Cannabis Club 4, LLC	00000107ESVJ79465811
Jars (Somerton) - Yuma County Dispensary LLC	00000145ESNP12373673
Jars (Tucson) - Greenmed, Inc	00000017DCEX00412883
Jars HUB - Legacy & Co., Inc	00000079ESTS64678211, 00000006DCDX00478035
LunchBox Dispensary - MK Associates LLC	00000143ESKB17654619
M&T Retail Facility 1, LLC	00000101ESZO30906924, 00000080DCQI00709964
MCD-SE Venture 25, LLC	0000167ESTML86118201
MCD-SE Venture 26, LLC	0000162ESTOS80671885
Medusa Farms - Verde Dispensary Inc	00000063ESQI60809124, 00000089DCQY00546716
NatureMed Tucson - Arizona Golden Leaf Wellness, Llc	00000067ESBS89254298, 00000077DCPS00216601
Natures Wonder (Apache Junction) - Nature's Wonder Inc	00000075ESJK64208740, 00000035DCCB00049778

Natures Wonder (Grand) - Non Profit Patient Center Inc	00000037ESIX56363099
Natures Wonder (Phoenix) - The Desert Valley Pharmacy Inc	00000089ESLW87335751, 00000060DCIS00424661
Nirvana (35TH AVE) - NIRVANA ENTERPRISES AZ LLC	00000121ESBM38825533, 00000015DCGC00626237
Nirvana (75TH AVE) - OCOTILLO VISTA INC	00000051ESYP04501588, 00000109DCIT00443532
Nirvana (7TH ST) - YAVAPAI HERBAL SERVICES INC	00000111ESTX14447382
Nirvana (APACHE JUNCTION) - AZ FLOWER POWER LLC	0000148ESTMY68096274
Nirvana (Apache Junction) - Svaccha	00000137DCOF00188324
Nirvana (FLORENCE) - GRUNGE FREE LLC	0000160ESTDY36165846
Nirvana (Prescott) - TOTAL ACCOUNTABILITY SYSTEMS INC	00000009DCYP00763819, 00000110ESBL46708127
Nirvana (TUCSON) - ARIZONA TREE EQUITY 2	00V00170ESTQ68678199
Noble Herb - Rch Wellness Center	00000069DCFG00710475 00000080ESNP00364439
Phoenix Relief Center - Phoenix Relief Center Inc	00000095DCVW00172644, 00000047ESRJ75098505
Ponderosa (Tempe/Mesa) - Arizona Wellness Collective 3, Inc.	00000044ESZW01555573, 119DCKO00583347
Ponderosa Dispensaries (Mesa) - Soothing Ponderosa, LLC	00000094DCTJ00667966, 00000117ESPN93487198
Ponderosa Dispensaries (Phoenix) - ABACA Ponderosa, LLC	00000116ESSM79524188
Ponderosa Dispensaries (Queen Creek) - H4L Ponderosa LLC	00000093DCBC00293679 00000118ESDH66162163
Ponderosa Dispensary (Chandler) - Ponderosa Botanical Care Inc	00000066DCBO00410690, 00000109ESVM44878444
Ponderosa Dispensary (Flagstaff) - High Mountain Health	00000050DCBO00239922, 00000087ESWR93327597
Ponderosa Dispensary (Tucson) - 480 License Holdings LLC	0000154ESTQI31348041
Ponderosa Dispensary(Glendale) - MMJ Apothecary	00000100ESEC12878172, 00000062DCAY00861940
Reef Northwest Phoenix - Whoa Qc Inc	00000042DCSI00109560, 00000069ESPV40435704
Reef Queen Creek - The Kind Relief Inc	00000049DCRR00713151, 00000053ESYR15319850
Sol Flower (Casa Adobes) - S Flower SE 4, Inc.	0000152ESTNJ52349435
Sol Flower (McClintock) - Holistic Patient Wellness Group	00000019DCGM00234427
Sol Flower (North Tucson) - S Flower SE 3 Inc.	0000171ESTSC03605413
Sol Flower (Scottsdale) - CSI Solutions, Inc.	00000008DCJJ00257791, 00000012ESIS11195422
Sol Flower (Shea) - S Flower N Phoenix, Inc.	00000028DCGV00174888
Sol Flower (Sun City) - East Valley Patient Wellness Group Inc	00000063DCTB00283389, 00000019ESXY11403163
Sol Flower (Tucson Foothills) - S Flower SE 1, Inc	0000166ESTNU15027116
Sol Flower (Tucson Valencia) - S Flower SE 2, Inc.	0000163ESTS081819209
Sol Flower (University) - Holistic Patient Wellness Group	00000019DCGM00234427, 00000015ESEM68131310
Sticky Saguaro - Border Health, Inc	00000108DCVB00423429, 00000022ESMC44584355
STORY (BULLHEAD) - Juicy Joint I LLC	0000147ESTXX54706468
Story (DUNLAP) - ANPS Holdco LLC	00000013DCOU00042197, 00000096ESWI60030184
Story (GLENDALE) - Pleasant Plants 1 LLC	0000159ESTFT57497963
Story (GRAND) - SSE Holdco LLC	00000014DCHT00564851, 00000090ESFB63917979
Story (Lake Havasu) - Curious Cultivators I LLC	0000155ESTWD37312465
Story (Litchfield Park) - MCCSE29, LLC	0000149ESTUL49249395
Story (MCDOWELL) - SSE Holdco LLC	00000088DCXB00897085, 00000092ESKW00353670
Story (North Chandler) - Total Health & Wellness Inc	00000100DCWU00857159, 00000021ESQX24132908
Story (Tolleson) - CRG Holdco LLC	00000104ESDH57805022, 00000055DCDA00381095
Story (WILLIAMS) - Joint Junkies I LLC	0000158ESTLH17620655
Story(KINGMAN) - Juicy Joint I LLC	0000147ESTXX54706468
Superior Dispensary - Superior Organics	00000065DCLV00799347
The Flower Shop (HUB Phoenix) - Nature's Healing Center Inc	00000041ESLU31226658
The Flower Shop (Mesa) - Buds & Roses, Inc	00000132DCYB00654510
The Flower Shop(Ahwatukee) - Nature's Healing	00000046DCYJ00671222, 00000031ESCS44452076
The Good Dispensary - Valley Healing Group Inc	00000048DCKJ00945635, 00000072ESRF58078256
The Mint (75TH) - M&T RETAIL FACILITY	00000080DCQI00709964, 00000101ESZO30906924
The Mint (PHOENIX) - UNCLE HARRY CORP	00000129ESRG43839179, 00000110DCDE00541508
The Mint (HUB)- SWALLOWTAIL 3, LLC	000161ESTOJ23023764
The Mint (Mesa) - 4245 Investments LLC	00000036ESXU42814428, 00000136DCKS00208201
The Mint (NORTHERN) - GTL LLC	00000034ESEZ92106085, 00000128DCNB00202967
The Mint (Scottsdale) - Eba Holdings Inc.	00000068ESZM96727661, 00000072DCMU00762354
The Prime Leaf (Park) - Total Accountability Patient Care	00000025DCPT00084389
The Prime Leaf (Speedway) - Rainbow Collective Inc	00000039DCVR00320237, 00000124ESOS02903622
Tru Med - AZ Compassionate Care Inc	00000079DCUU00478781, 00000076ESON21559195
TRUBLISS - Sea of Green Llc	00000113DCUX00454549, 00000057ESJG92466754
Trulieve (Apache Junction)- Svaccha, LLC	00000011ESVC04035599, 00000137DCOF00188324
Trulieve (Avondale) - High Desert Healing LLC	00000007DCWH00607422
Trulieve (Baseline) - Nature Med Inc	00000018DCST00941489
Trulieve (Casa Grande) - Medical Pain Relief	00000044DCCJ00900645
Trulieve (Chandler) - High Desert Healing LLC.	00000005DCMV00766195

<i>Trulieve (Cottonwood) - Sherri Dunn LLC.</i>	000000124DCKQ00697385 00000055ESFL28376770
<i>Trulieve (Glendale) - Pahana LLC.</i>	00000129DCKL00602472 00000018ESKD27426528
<i>Trulieve (HUB) - Green Sky Patient Center Of Scottsdale</i>	00000081ESLT56066782
<i>Trulieve (N. Mesa) - Sweet 5, LLC</i>	00000013ESH20255089, 00000115DCGL00377020
<i>Trulieve (Peoria) - Green Desert Patient Center of Peoria</i>	00000082ESUB29429633, 00000023DCAK00675039
<i>Trulieve (Phoenix Alhambra/Urban Greenhouse) - AD LLC</i>	00000092DCEG00124317
<i>Trulieve (Phoenix/Peoria Ave) - Kwerles Inc.</i>	00000125DCWD00787544 00000005ESIN89499585
<i>Trulieve (Roosevelt Row) - Mohave Valley Consulting LLC</i>	00000017ESMI32133238, 00000121DCLW00319285
<i>Trulieve (S. Mesa) - The Giving Tree Wellness Center of Mesa Inc</i>	00000008ESJT20615662, 00000084DCXM00601985
<i>Trulieve (Scottsdale) - Byers Dispensary</i>	00000054dcov00321891 00000003ESPF54627423
<i>Trulieve (Scottsdale/Butherford) - Green Sky Patient Center of Scottsdale</i>	00000081ESLT56066782, 00000022DCRX00190936
<i>Trulieve (Tatum) - Abedon Saiz LLC</i>	00000052ESLX15969554, 00000135DCSM00130984
<i>Trulieve (Tempe) - Svaccha LLC</i>	00000120DCEQ00578528 00000009ESJA48286920
<i>Trulieve (Tucson/22nd St) - Fort Mountain Consulting, LLC</i>	00000016ESBY46918805, 00000134DCUJ00307958
<i>Trulieve (Tucson/Grant) - Patient Care Center 301, Inc.</i>	000000127DCSS00185167
<i>Trulieve (Tucson/Menlo Park) - Purplemed Inc</i>	00000130ESFL12611544, 00000056DCLD00291476
<i>Trulieve(Sierra Vista) - Cochise County Wellness LLC</i>	00000135ESGE19332725
<i>Tucson SAINTS - Green Medicine</i>	00000094ESMX02282810, 00000071DCCX00288765
<i>Uncle Harry Corp</i>	00000129ESRG43839179, 00000110DCDE00541508
<i>Valley of The Sun - Valley of The Sun Medical Dispensary, Inc</i>	00000083DCYO00463840
<i>White Mountain Health Center - White Mountain Health Center Inc</i>	00000103DCDR00369521, 00000083ESGB09219996
<i>Woodstock 1</i>	0000168ESTBM41952754
<i>Zen Leaf (Cave Creek) - Fort Consulting, LLC</i>	00000064ESAK09838873, 00000105DCOU00194638
<i>Zen Leaf (Chandler) - AZGM 3, LLC</i>	00000040ESDX57445071, 00000126DCSO00060479
<i>Zen Leaf (Dunlap) - Perpetual Healthcare, LLC</i>	00000105ESDR54985961, 00000033DCCK00134006
<i>Zen Leaf (Gilbert) - Vending Logistics LLC</i>	00000043ESPE02331128, 00000112DCLK00614860
<i>Zen Leaf (Local Joint)/ARCADIA- Patient Alternative Relief Center, LLC</i>	00000086ESQZ01367420, 00000091DCWY00555666
<i>Zen Leaf (Mesa) - The Medicine Room LLC</i>	00000084ESFH12297246, 00000037DCDM00904008