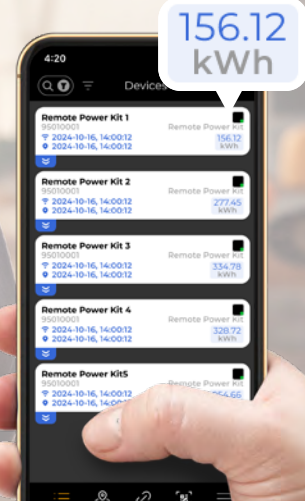


Product info

Remote Power Kit



Easily plugs in between the power source and your power-consuming unit, making consumption data available in the Xtellio Cloud.



INSIGHTS:

Energy consumption data

Location (optional)



Available connector variants:

CEE 5-pin 16A
CEE 5-pin 32A

IEC 60309 standard plugs and sockets 3P+N+PE

FEATURES:

- 5G technologies
- SIM/e-SIM (Data incl. in license)
- Fixed powered w/back-up battery
- Fittings: CEE 5-pin 16A/32A
- Certified CE, MID certification
- IP65 (Device housing)
- 180 x 180 x 100 mm / 7 x 7 x 3.9 in*
*Housing only, excludes wires

The Xtellio Remote Power Kit gives you instant insight into actual power consumption. The solution is simple to deploy – just plug it in between the power source and the connected equipment to start measuring. Housed in a rugged, IP67-classified enclosure, it is designed to perform reliably in demanding conditions. The kit is available with either CEE 5-pin 16A or 32A connectors and can optionally be configured to deliver GPS location data for tracking. All collected data is transmitted to the Xtellio Cloud via a built-in mobile network connection and can be viewed in Xtellio's intuitive applications or integrated directly into your own industry-specific software through Xtellio's cloud-based APIs.



Xtellio

Data, at your service



Contact us:

sales@xtellio.com

+45 3226 9200

xtellio.com

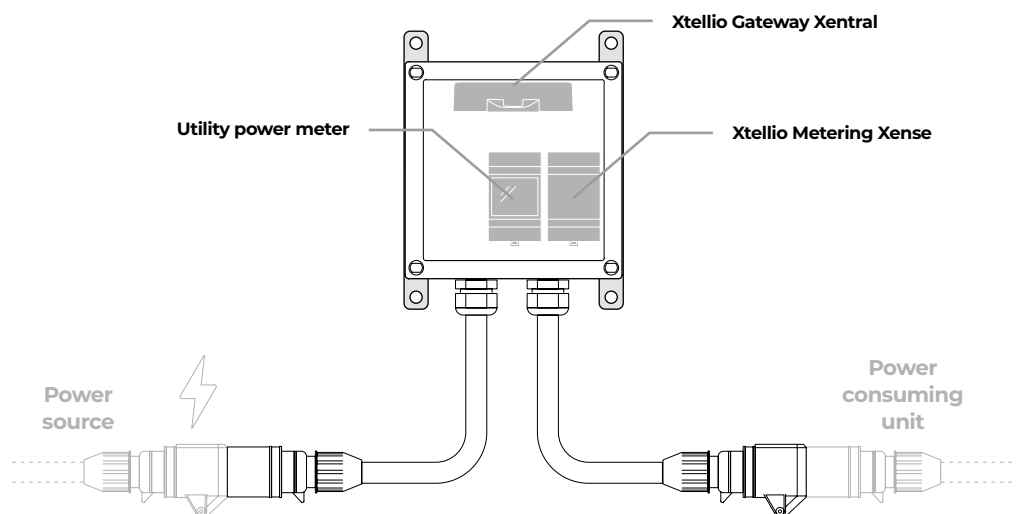


How it works

Default Operation

Xtellio Remote Power Kit contains three key components:

- **A utility power meter** that measures power consumption
- **An Xtellio Metering Xense** that reads the utility power meter through wired M-Bus or digital input interface.
- **An Xtellio Gateway Xentral** that collects data from Xtellio Metering Xense, measures GPS location (if enabled), and transmits all data to Xtellio Cloud.



Plugged in between the power source and your power-consuming unit, the Xtellio Remote Power Kit reads precise power consumption data (kWh) from a built-in utility power meter.



All data is securely transmitted to the Xtellio Cloud via the Gateway Xentral's embedded SIM module, utilizing NB-IoT or LTE-M networks to ensure reliable connectivity – even in areas with limited coverage.

From the Xtellio Cloud, data is either integrated into your existing systems via Xtellio's APIs or accessed through the Xtellio Butler web app or Xtellio Picco mobile app – all included as part of your Xtellio Service.

Default settings

Data sampling: **1 per hour**
Cloud data transmission: **1 per day**
GPS location measurement: **Disabled**

} *Configurable with
Business or Premium
subscription.*





Technical specification

Product number (variants)

CEE 5-pin 16A connector: 95010016

CEE 5-pin 32A connector: 95010032

Wireless communication

Standards: CAT-NB2/CAT-M1 (Aka NB-IoT and LTE-M), Bluetooth LE 5.x

LTE band support: B2, B3, B8, B12, B20 Software update over air (SUOTA)

SIM-card option: SIM/e-SIM

Built-in components

Three phase energy meter:

- Class 1 (kWh) according to EN62053-21
- Class B (kWh) according to EN50470-3
- Accuracy $\pm 0.5\%$ RDG (current/voltage)
- Resolution 0.001 kWh
- Persistent storage of "total kWh"

Xtellio Metering Xense (Standard version):

- Connected to the utility power meter via M-Bus.
- Fixed input supply: 230V AC nominally $\pm 10\%$. Power consumption 0.5W.

Xtellio Gateway Xentral:

- GNSS positioning: GPS, GLONASS, Galileo and BeiDou supported.

Operating conditions

Ambient temperature: -20°C to $+55^{\circ}\text{C}$ (-4°F to $+131^{\circ}\text{F}$)

Certification & Compliance

CE and RoHS, MID cetification

IP Classification

IP44 (Connector fittings), IP65 (Housing)

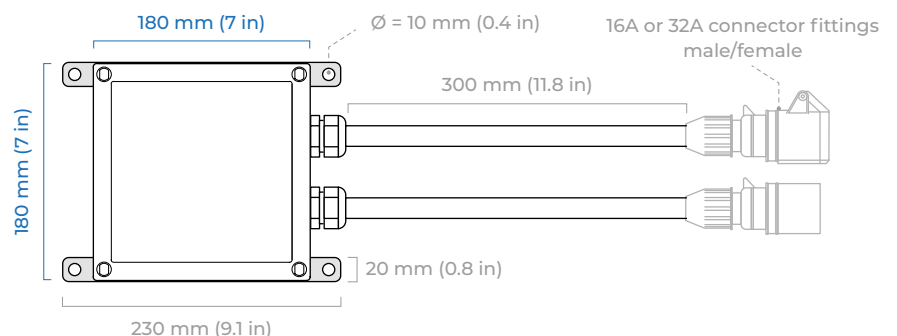
Mechanical properties

Dimensions: Housing: 180 x 180 x 100 mm (7 x 7 x 3.9 in)

Wire length: 300 mm (11.8 in)

Weight: Approx. 2.6 kg (91.7 oz)

Top view



Side view

