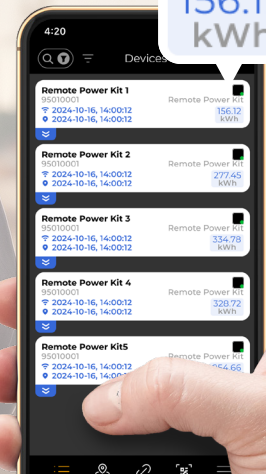


Remote Power Kit

Metering



Easily plugs in between the power source and your power-consuming unit, making consumption data available in the Xtellio Cloud.



156.12 kWh

INSIGHTS:

Energy consumption data

Location (optional)



Available connector variants:

CEE 5-pin 16A
CEE 5-pin 32A

IEC 60309 standard plugs and sockets 3P+N+PE

FEATURES:

- 5G technologies
- SIM/e-SIM (Data incl. in license)
- Fixed powered w/back-up battery
- Fittings: CEE 5-pin 16A/32A
- Certified CE, MID certification
- IP65 (Device housing)
- 180 x 180 x 100 mm / 7 x 7 x 3.9 in*
*Housing only, excludes wires

The Xtellio Remote Power Kit – Metering – gives you instant insight into actual power consumption. The solution is simple to deploy – just plug it in between the power source and the connected equipment to start measuring. Housed in a rugged, IP65-classified enclosure, it is designed to perform reliably in demanding conditions. The kit is available with either CEE 5-pin 16A or 32A connectors and can optionally be configured to deliver GPS location data for tracking. All collected data is transmitted to the Xtellio Cloud via a built-in mobile network connection and can be viewed in Xtellio's intuitive applications or integrated directly into your own industry-specific software through Xtellio's cloud-based APIs.



Xtellio

Data, at your service

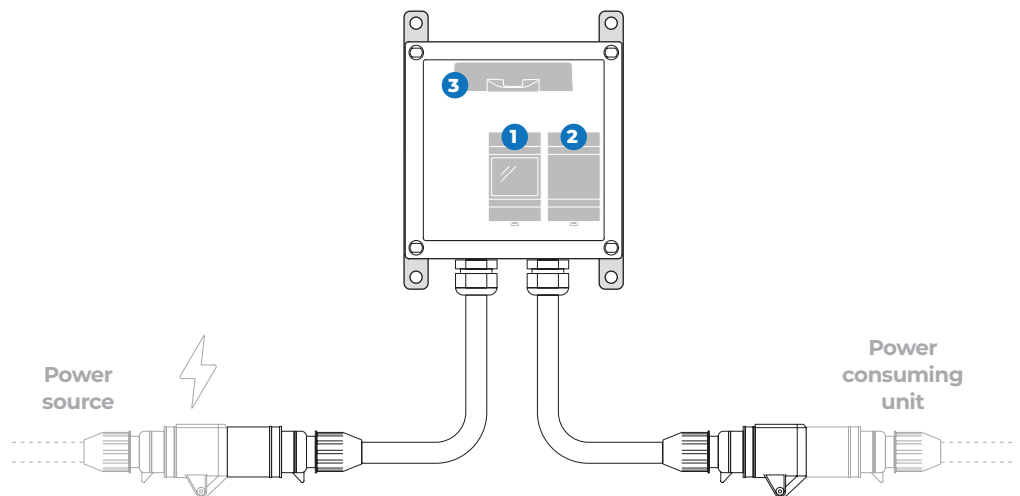


How it works

Default Operation

Xtellio Remote Power Kit contains three key components:

- 1 A utility power meter that measures power consumption
- 2 An Xtellio Metering Xense – Standard that reads the utility power meter through wired M-Bus or digital input interface.
- 3 An Xtellio Gateway Xentral that collects data from Xtellio Metering Xense, measures GPS location (if enabled), and transmits all data to Xtellio Cloud.



Plugged in between the power source and your power-consuming unit, the Xtellio Remote Power Kit reads power consumption data (kWh) from a built-in utility power meter.



All data is securely transmitted to the Xtellio Cloud via the Gateway Xentral's embedded SIM module, utilizing NB-IoT or LTE-M networks to ensure reliable connectivity – even in areas with limited coverage.

From the Xtellio Cloud, data is either integrated into your existing systems via Xtellio's APIs or accessed through the Xtellio Butler web app or Xtellio Picco mobile app – all included as part of your Xtellio Service.

Default settings

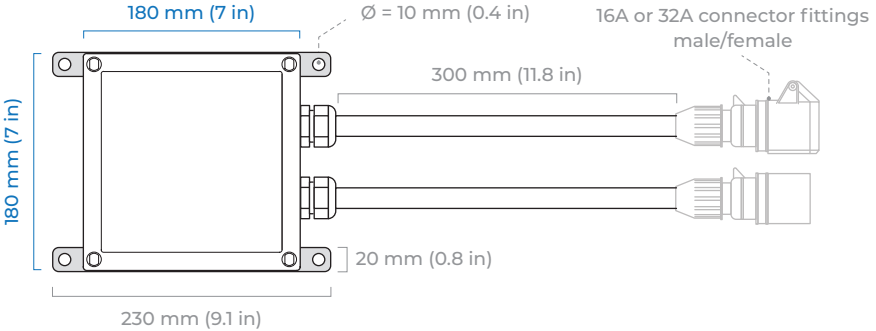
Data sampling: **1 per hour**
Cloud data transmission: **1 per day**
GPS location measurement: **Disabled**

} *Configurable with Business or Premium subscription.*





Technical specification

Product number (variants)	CEE 5-pin 16A connector: 95010016 CEE 5-pin 32A connector: 95010032
Wireless communication	Standards: CAT-NB2/CAT-M1 (Aka NB-IoT and LTE-M), Bluetooth LE 5.x LTE band support: B2, B3, B8, B12, B20 Software update over air (SUOTA) SIM-card option: SIM/e-SIM
Built-in components	Three phase energy meter: <ul style="list-style-type: none">· Class 1 (kWh) according to EN62053-21· Class B (kWh) according to EN50470-3· Accuracy $\pm 0.5\%$ RDG (current/voltage)· Resolution 0.001 kWh· Persistent storage of “total kWh” Xtellio Metering Xense (Standard version): <ul style="list-style-type: none">· Connected to the utility power meter via M-Bus.· Fixed input supply: 230V AC nominally $\pm 10\%$. Power consumption 0.5W. Xtellio Gateway Xentral: <ul style="list-style-type: none">· GNSS positioning: GPS, GLONASS, Galileo and BeiDou supported.
Operating conditions	Ambient temperature: -20°C to $+55^{\circ}\text{C}$ (-4°F to $+131^{\circ}\text{F}$)
Certification & Compliance	CE and RoHS, MID cetification
IP Classification	IP44 (Connector fittings), IP65 (Housing)
Mechanical properties	Dimensions: Housing: 180 x 180 x 100 mm (7 x 7 x 3.9 in) Wire length: 300 mm (11.8 in) Weight: Approx. 2.6 kg (91.7 oz)
<p>Top view</p>  <p>Side view</p> 