

Temperature Xense




Measure outdoor temperature to optimize climate control settings






Pairs with Xtellio Pro Xentral Heat IQ, delivering operational insights from heaters

Monitor real-time temperature during concrete works and concrete pours

INSIGHTS:

Ambient temperature 

FEATURES:

-  Low-power wireless technology
-  Battery lifetime up to 10 years
-  CE certified
-  IP67 - for industrial use
-  Incl. mounting holes:
40 x 41 x 42 mm / 1.6 x 1.6 x 1.7 in

Temperature Xense measures ambient temperature. This device is ideal for adding data insights when paired with an Xtellio Gateway Xentral or an Xtellio Pro Xentral device (sold separately).

The device is industrial-grade and designed to operate reliably on construction sites and in manufacturing environments where enhanced durability is required.

To access data in Xtellio Cloud, view it in Xtellio apps, or integrate via API, the device must be paired with a Xentral-type unit featuring an embedded SIM (sold separately).



Xtellio

Your Data Butler



How it works

Default Operation

The Temperature Xense uses a built-in sensor to measure temperature (°C/°F).



When paired with an Xtellio Xentral-type unit, all collected data is securely transmitted to the Xtellio Cloud via an embedded SIM module, utilizing NB-IoT or LTE-M networks to ensure reliable connectivity—even in areas with limited coverage.

From the Xtellio Cloud, data is either integrated into your existing systems via Xtellio's APIs or accessed through the Xtellio Butler web app or Xtellio Picco mobile app — all included as part of your Xtellio Xervice.

Default settings

Xtellio Temperature Xense:

Sensor measurement: **1 per hour**

Xtellio Gateway or Pro Xentral (sold separately):

Cloud data transmission: **Device dependent**

GPS location measurement: **Device dependent**

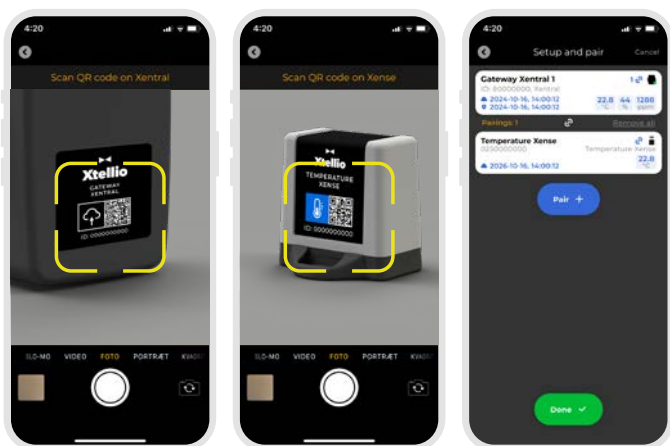
Configurable with Business or Premium subscription.

Easy pairing

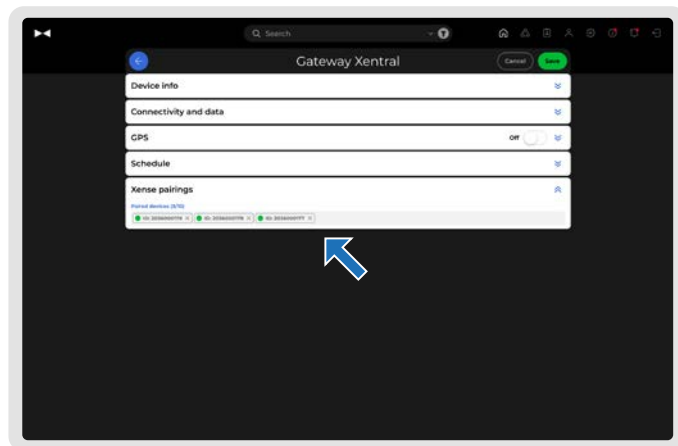
You can use both the Xtellio Picco mobile app and the Xtellio Butler web app to pair Xtellio Xense devices with a Xentral device (sold separately).

The easiest way to complete the pairing is by using the Xtellio Picco mobile app, which includes a QR code scanning feature. Download Xtellio Picco from the App Store or Google Play, and log in using your Xtellio credentials.

Alternatively, you can use the Xtellio Butler web app. Visit xtellio.com to access the login page and sign in with your Xtellio credentials.



Pairing with Xtellio Picco mobile app



Pairing with Xtellio Butler web app





Technical specification

P/N:	90050002
Wireless communication	Standards: BLE 5.0 - 2,4 GHz Line of sight up to 100 m (328 ft) and indoors up to 50 m (164 ft).
Sensors (built-in)	Ambient temperature: Range: -20 to +70°C / -4 to 158°F, Accuracy: ±0.2°C (0°C to 70°C) / ±0.36°F (32°F to 158°F).
Power	Battery: One cell solution: Industrial 3.6V ½AA Lithium Thionyl Chlorid battery. Estimated lifetime with default settings: Up to 10 years (non-rechargeable battery).
Operating conditions	-20°C to +70°C / -4°F to +158°F
Certification & Compliance	CE and RoHS
IP Classification	IP67 - for industrial use

Mechanical properties

Xense casing	Dimensions: 40 x 41 x 42 mm / 1.6 x 1.6 x 1.7 in Weight: 32 gr / 1.1 oz (Approx.)
---------------------	--

