

CASE STUDY #1

Specification

Application: Aircraft

Material: Honeycomb & monolithic

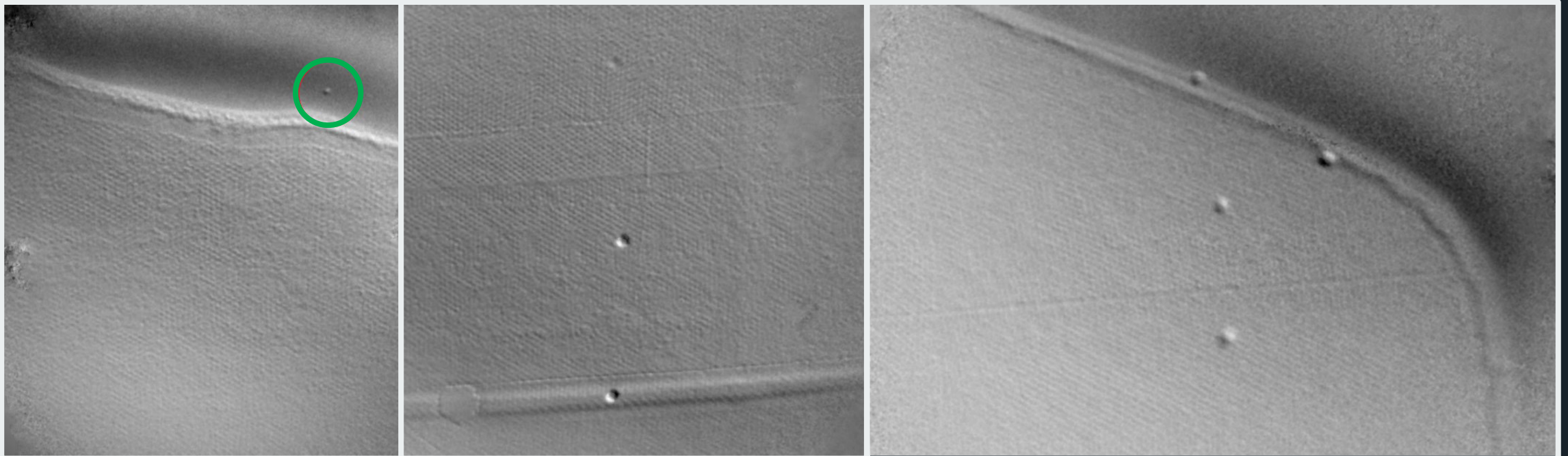
Goal: Quality Inspection

Results

Optrion's solution detected defects 6 & 12.5mm in diameter at all interfaces, including in typically difficult areas to inspect such as a honeycomb chamfer.

Shearography Difference

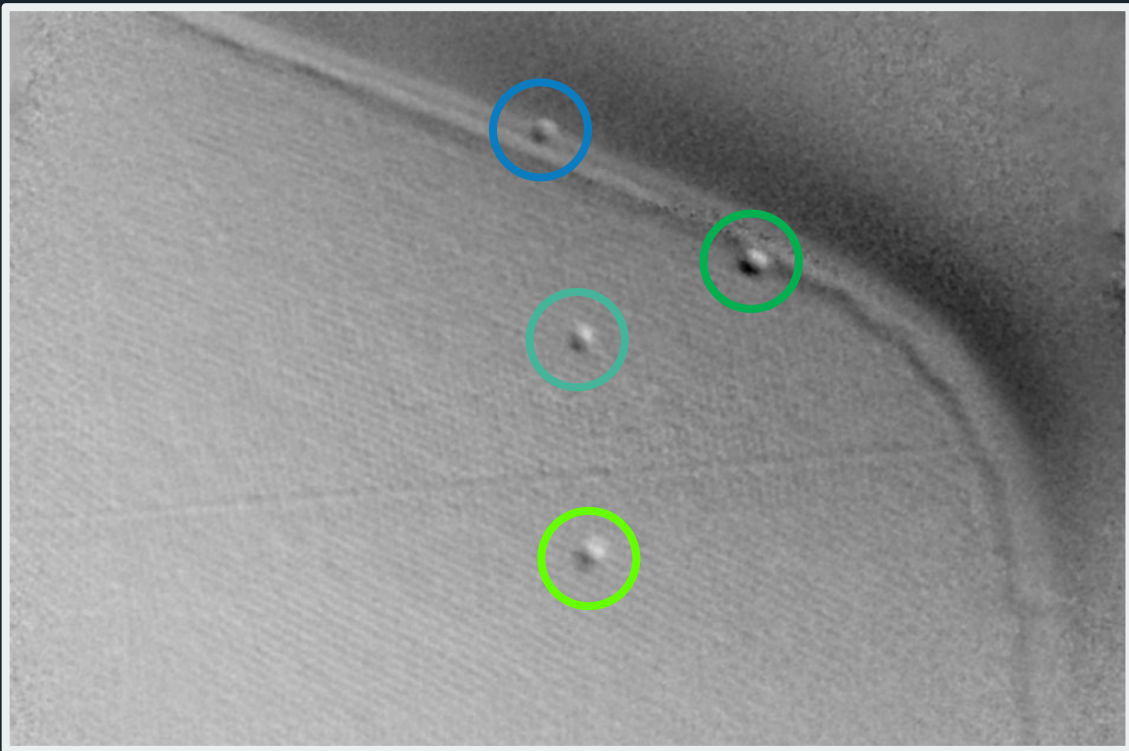
- 20x faster than ultrasound with the same quality of results.
- 5x faster than IRT
- Full-field analysis enables fast results of the entire material.



CASE STUDY #1: Analysis

Results

The image below shows the design of the material. The images to the right show the defects, their position and size based on the cut location.



Cross-Section

Shearography data can be combined with a cross-sectional drawing of the material to enable detailed analysis as to the exact position and type of defect.

