

CASE STUDY #2

Specification

Application: Aircraft

Material: CFRP

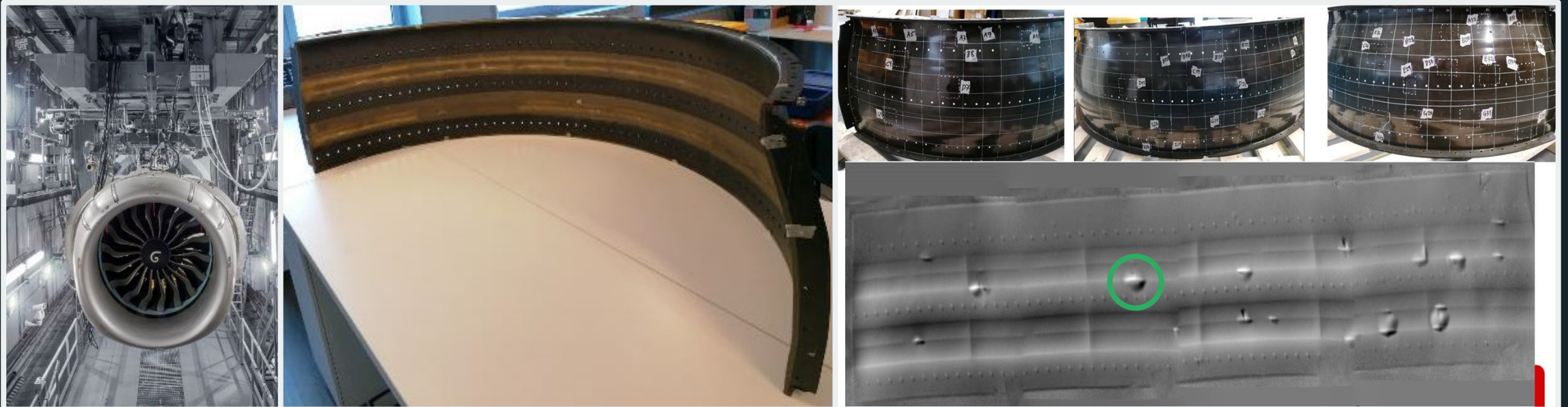
Goal: Health Inspection

Results

Optrion's solution detected delamination defects up to 70mm in length and cracks in the surface material up to 10mm in width.

Shearography Difference

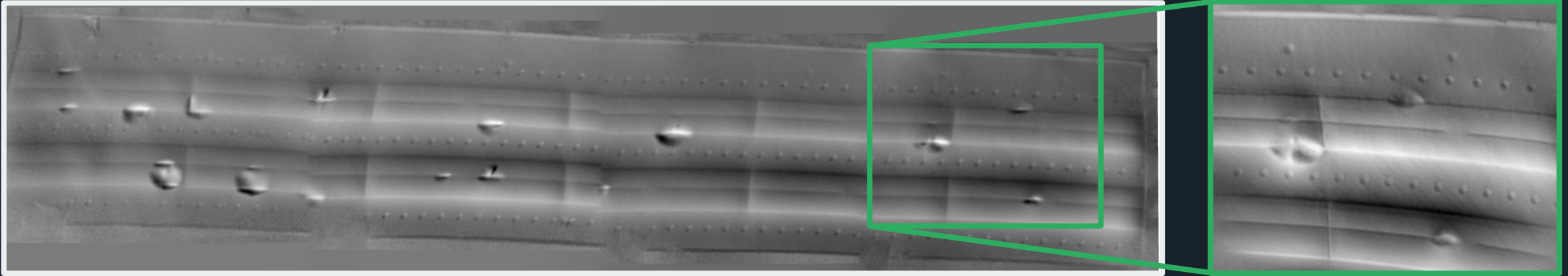
- 20x faster than ultrasound with the same quality of results.
- Adaptable optics optimized the inspection process.
- Portability enables testing of in-situ materials.



CASE STUDY #2: Analysis

Overall Result

The output of from Shrearography testing. In the zoomed image, 5 specific defects identified in the monolithic and abradable areas.



Cross Sectional Microscope Validation

Shearography was able to detect the full extent of the defect as shown by micrographic analysis. The delamination in the monolithic section can be seen in both images, measuring 67x72 mm.

