

OPTRION

DeFinder® Shearography System 4300 series



Contactless



Fast Operation



Quick Set Up



Full-Field



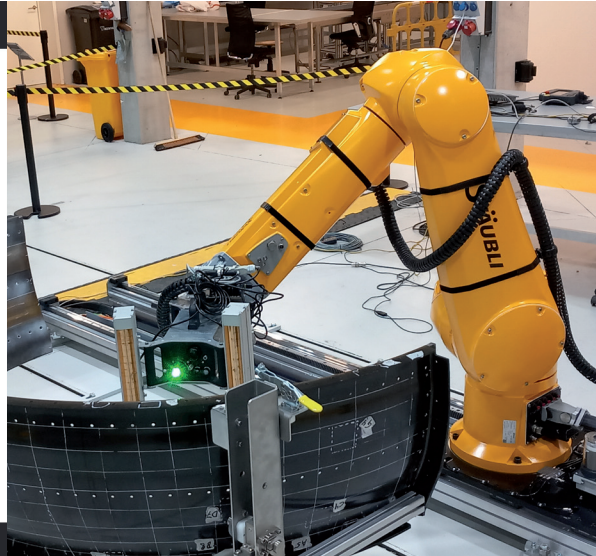
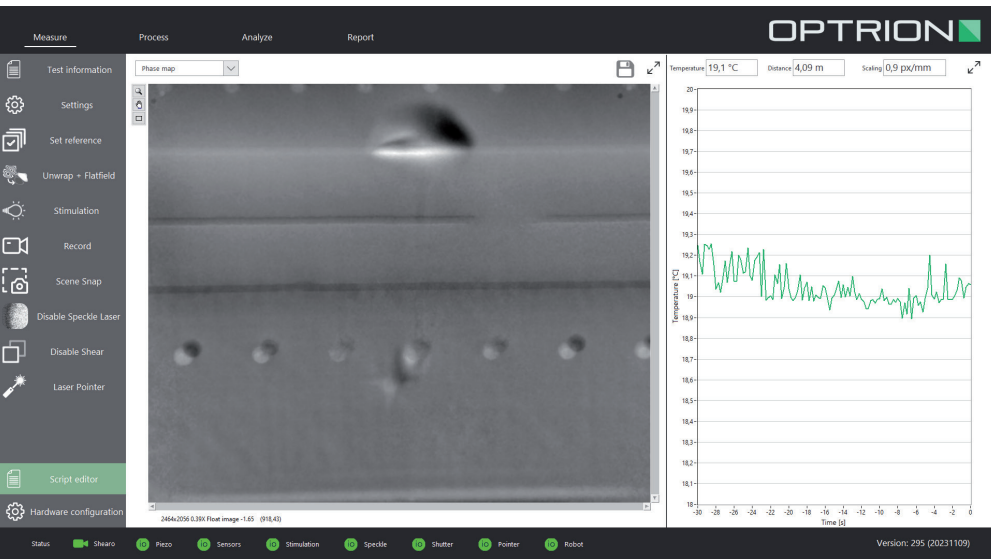
High Resolution



Portable



Automation Ready



DeFinder® 4300 series

Applications

- Materials: composites and hybrid materials
- Maintenance: inspection of large structures
- Production: in-line and real-time quality control
- Space, Aeronautics, Automotive, Defense, Nautical, Sport gear, Wind Turbines, Construction, Oil & Gas

Shearography Features

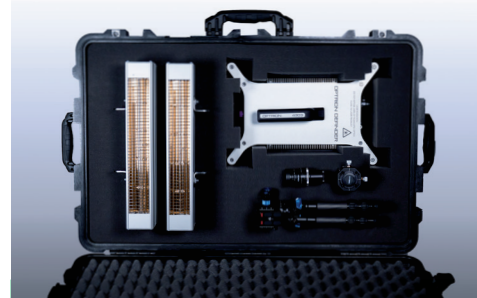
- Full field and contactless method
- Real-time and/or in-line automated inspection
- Detection of various defects: delaminations, kissing bonds, disbonds, impact damages, repair defects, wrinkles, foreign objects and others.
- Certified NDT method: NAS 410 - ASNT - ASTM E2581 - EN 4179

Camera Specifications

- Dimensions (LxHxW): 360x240x200 mm
- Weight: 6.1 kg
- Standard tripod mounting system or mechanical interface with robot/cobot
- Adaptable optics f12mm, f16mm & f35mm
- Automation ready with custom mounting available
- Laser 150-300 mW SLM @ 532 nm (green) – Class 1M
- Laser Beam: Homogeneous & rectangular (Top Hat) laser projection
- CMOS Sensor: GigE camera 2464x2056 pixels – 12-bit resolution
- Field of View: typ. 24°-107° diag
- Pyrometer (surface temperature) & laser telemeter (working distance)
- Power: 85 – 264 VAC / 50-60 Hz 60W

Software Specifications

- Intuitive user interface designed for seamless acquisition, processing, analyzing and reporting
- Excitation source control
- Measurement and adjustment of test parameters:
 - Camera / sample distance
 - Sample stimulation
 - Shear angle and amplitude
 - Focus, reference, ISO
- Easily editable scripting of the test sequence and post-processing steps
- Communication with automation system through ethernet connection
- Advanced postprocessing
- Automated defect detection
- Extensive image metadata incl. complete set of process parameters and performed steps
- Remote control for distant support and/or expertise
- Customizable software



CONTACT:

OPTRION S.A.

Avenue du Pré-Ailly, 25
Liège Science Park
B-4031 LIEGE - BELGIUM

T. +32 (0)4 287 10 70
info@optrion.be
www.optrion.be

Specifications as of November 2023.
Subject to change without notice.