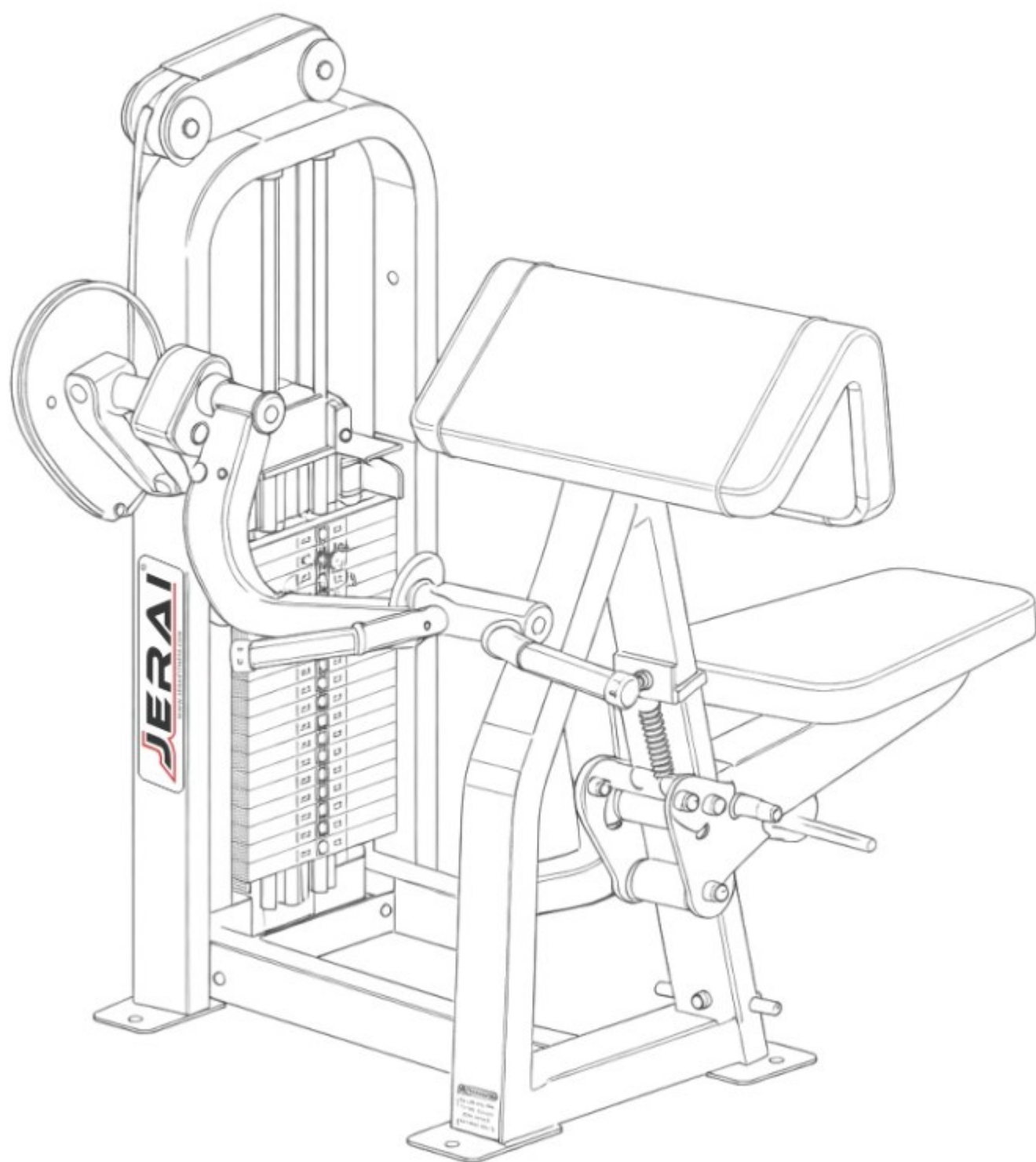


PRODUCT CATALOGUE



SINCE 1994



Jerai Fitness is an Indian manufacturer with over three decades of expertise in designing and producing world-class fitness equipment. The company caters to a diverse clientele, including commercial gyms, hotels, corporate wellness centers, and real estate projects, serving both the domestic market and 26 international markets such as USA, UK, Germany, Japan, Australia, Sweden, UAE, Saudi Arabia, and France, among others. With 9 official international distributors, Jerai Fitness ensures seamless access, service, and support worldwide - combining global reach with strong regional impact.

Through years of industry experience, Jerai Fitness has developed strong capabilities in manufacturing processes, inventory management, distribution efficiency, and customer service, enabling it to consistently deliver reliable and innovative fitness solutions. A pan-India network of 15 exclusive showrooms strengthens customer engagement, provides accessible support, and enhances brand reach.

As a pioneer in automated manufacturing, Jerai Fitness incorporates robotic welding, advanced assembly techniques, and high-precision Turkish and Japanese machinery into its production processes. This modern infrastructure ensures accuracy, durability, and compliance with international standards, while enabling the company to scale operations, meet increasing global demand, and remain competitively priced.

FALCON

SERIES



The Falcon Series is designed for mid-tier gyms, commercial fitness centers, and institutional facilities, offering a perfect balance of style and performance. Its easy-to-use adjustments and integrated safety features provide a secure and comfortable training experience, backed by long-lasting quality and dependable durability. Built with heavy-duty rectangular steel construction, reinforced load-bearing joints, and additional 8 mm fail-safe plates, the Falcon Series delivers long-term strength and stability. It features industrial-grade nylon-coated cables and laser-cut high-grade steel half shrouds that enclose the rear weight stack for enhanced safety and a clean, professional finish. The series is equipped with a 220 lbs (100 kgs) weight stack.



PEC FLY / REAR DELT
JFC - 1010



- 📏 L : 60 inches / 152 cms
W : 68 inches / 173 cms
H : 82 inches / 208 cms
- 📦 220 lbs / 100 kgs



VERTICAL CHEST PRESS
JFC - 1020



- 📏 L : 56 inches / 142 cms
W : 64 inches / 163 cms
H : 72 inches / 183 cms
- 📦 220 lbs / 100 kgs



MULTI PRESS
JFC - 1030



- 📏 L : 80 inches / 203 cms
W : 60 inches / 152 cms
H : 56 inches / 142 cms
- 📦 220 lbs / 100 kgs



LAT PULL DOWN - SINGLE PULLEY
JFB - 2010A



- 📏 L : 62 inches / 157 cms
W : 40 inches / 102 cms
H : 92 inches / 234 cms
- 📦 220 lbs / 100 kgs





LAT PULL DOWN WITH ROWING COMBO.

JFB - 2010C



- ☑ L : 84 inches / 213 cms
- W : 40 inches / 102 cms
- H : 90 inches / 229 cms
- ☑ 220 lbs / 100 kgs



ASSISTED DIP CHIN

JFB - 2020



- ☑ L : 58 inches / 147 cms
- W : 46 inches / 117 cms
- H : 85 inches / 216 cms
- ☑ 220 lbs / 100 kgs



LONG PULL ROW - SINGLE PULLEY

JFB - 2030A



- ☑ L : 94 inches / 239 cms
- W : 40 inches / 102 cms
- H : 90 inches / 229 cms
- ☑ 220 lbs / 100 kgs



VERTICAL ROW

JFB - 2040



- ☑ L : 68 inches / 173 cms
- W : 52 inches / 132 cms
- H : 62 inches / 157 cms
- ☑ 220 lbs / 100 kgs





LATERAL RAISE
JFS - 3010



- 📏 L : 48 inches / 122 cms
W : 50 inches / 127 cms
H : 56 inches / 142 cms
- 📦 165 lbs / 75 kgs



SHOULDER PRESS
JFS - 3020



- 📏 L : 66 inches / 168 cms
W : 62 inches / 157 cms
H : 56 inches / 142 cms
- 📦 220 lbs / 100 kgs



INCLINE SHOULDER PRESS
JFS - 3030



- 📏 L : 80 inches / 203 cms
W : 58 inches / 147 cms
H : 56 inches / 142 cms
- 📦 220 lbs / 100 kgs



BICEP CURL
JFBT - 4010



- 📏 L : 48 inches / 122 cms
W : 36 inches / 91 cms
H : 56 inches / 142 cms
- 📦 165 lbs / 75 kgs



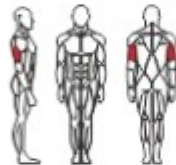


SEATED TRICEP DIP

JFBT - 4020



- ☑ L : 60 inches / 152 cms
W : 44 inches / 112 cms
H : 56 inches / 142 cms
- ☰ 220 lbs. / 100 kg



WRIST CURL

JFBT - 4030



- ☑ L : 24 inches / 61 cms
W : 30 inches / 76 cms
H : 44 inches / 112 cms
- ☰ 110 lbs. / 50 kg



LEG EXTENSION

JFL - 5010



- ☑ L : 56 inches / 142 cms
W : 44 inches / 112 cms
H : 56 inches / 142 cms
- ☰ 220 lbs / 100 kgs



SEATED LEG CURL

JFL - 5020



- ☑ L : 65 inches / 165 cms
W : 44 inches / 112 cms
H : 56 inches / 142 cms
- ☰ 220 lbs / 100 kgs



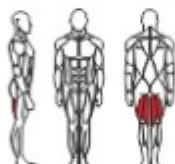


PRONE LEG CURL

JFL - 5030



- ▣ L : 67 inches / 170 cms
- ▣ W : 44 inches / 112 cms
- ▣ H : 56 inches / 142 cms
- ▣ 220 lbs / 100 kgs



LEG CURL / EXTENSION COMBO.

JFL - 5050



- ▣ L : 65 inches / 165 cms
- ▣ W : 44 inches / 112 cms
- ▣ H : 56 inches / 142 cms
- ▣ 220 lbs / 100 kgs

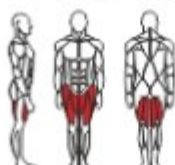


SEATED LEG CURL / EXTENSION COMBO.

JFL - 5080



- ▣ L : 65 inches / 165 cms
- ▣ W : 44 inches / 112 cms
- ▣ H : 56 inches / 142 cms
- ▣ 220 lbs / 100 kgs



GLUTE MACHINE

JFL - 5040



- ▣ L : 48 inches / 122 cms
- ▣ W : 40 inches / 102 cms
- ▣ H : 56 inches / 142 cms
- ▣ 165 lbs / 75 kgs





ADDUCTOR / ABDUCTOR COMBO.

JFL - 5060



- 📏 L : 67 inches / 170 cms
- 📏 W : 36 inches / 91 cms
- 📏 H : 56 inches / 142 cms
- 📦 165 lbs / 75 kgs



HIP THRUST

JFL - 5090



- 📏 L : 70 inches / 178 cms
- 📏 W : 50 inches / 127 cms
- 📏 H : 56 inches / 142 cms
- 📦 165 lbs / 75 kgs



STANDING CALF

JFL - 5070



- 📏 L : 56 inches / 142 cms
- 📏 W : 44 inches / 112 cms
- 📏 H : 75 inches / 191 cms
- 📦 220 lbs / 100 kgs



ABDOMINAL MACHINE

JFCR - 6010



- 📏 L : 52 inches / 132 cms
- 📏 W : 50 inches / 127 cms
- 📏 H : 58 inches / 147 cms
- 📦 220 lbs / 100 kgs





MULTI FUNCTIONAL STATION

JFMP - 7010



- ☑ L : 98 inches / 249 cms
W : 48 inches / 122 cms
H : 90 inches / 229 cms
- ☑ 220 lbs / 100 kgs X 2 Stack



Optional Attachment*

HIGH LOW PULLEY ADJUSTABLE

JFMP - 7020



- ☑ L : 44 inches / 112 cms
W : 39 inches / 99 cms
H : 90 inches / 229 cms
- ☑ 220 lbs / 100 kgs



CABLE CROSSOVER ADJUSTABLE

JFMP - 7030



- ☑ L : 162 inches / 411 cms
W : 39 inches / 99 cms
H : 90 inches / 229 cms
- ☑ 220 lbs / 100 kgs X 2 Stack



*Attachments, Accessories, Weight Plates, Dumbbells & Bars to be Ordered Separately



45° LEG PRESS
JFPL - 1010



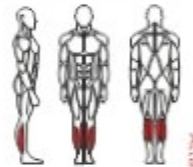
☑ L : 87 inches / 221 cms
W : 64 inches / 163 cms
H : 55 inches / 140 cms



SEATED CALF
JFPL - 1020



☑ L : 53 inches / 135 cms
W : 34 inches / 86 cms
H : 39 inches / 99 cms



POWER CAGE
JFBR - 1010



☑ L : 64 inches / 163 cms
W : 86 inches / 218 cms
H : 90 inches / 229 cms



SMITH MACHINE
JFBR - 1020



☑ L : 50 inches / 127 cms
W : 88 inches / 224 cms
H : 90 inches / 229 cms



*Attachments, Accessories, Weight Plates, Dumbbells & Bars to be Ordered Separately



OLYMPIC FLAT BENCH
JFBR - 1030



☑ L : 68 inches / 173 cms
W : 86 inches / 218 cms
H : 50 inches / 127 cms



OLYMPIC INCLINE BENCH
JFBR - 1040



☑ L : 78 inches / 198 cms
W : 86 inches / 218 cms
H : 55 inches / 140 cms



OLYMPIC DECLINE BENCH
JFBR - 1050



☑ L : 81 inches / 206 cms
W : 86 inches / 218 cms
H : 48 inches / 122 cms



**OLYMPIC FLAT / INCLINE
COMBO. BENCH**
JFBR - 1060



☑ L : 78 inches / 198 cms
W : 86 inches / 218 cms
H : 55 inches / 140 cms





SUPER BENCH
JFBR - 1070



☑ L : 58 inches / 152 cms
W : 22 inches / 56 cms
H : 50 inches / 127 cms



ABDOMINAL BOARD ADJUSTABLE
JFBR - 1080



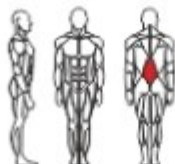
☑ L : 69 inches / 175 cms
W : 30 inches / 76 cms
H : 34 inches / 86 cms



BACK EXTENSION
JFBR - 1090



☑ L : 60 inches / 152 cms
W : 28 inches / 71 cms
H : 50 inches / 127 cms



PREACHER CURL BENCH
JFBR - 1100



☑ L : 52 inches / 132 cms
W : 48 inches / 122 cms
H : 38 inches / 97 cms



*Attachments, Accessories, Weight Plates, Dumbbells & Bars to be Ordered Separately



VERTICAL KNEE UP
JFBR - 1110



☑ L : 63 inches / 160 cms
W : 30 inches / 76 cms
H : 83 inches / 211 cms



VERTICAL PLATE TREE
JFBR - 1120



☑ L : 30 inches / 76 cms
W : 32 inches / 81 cms
H : 48 inches / 122 cms

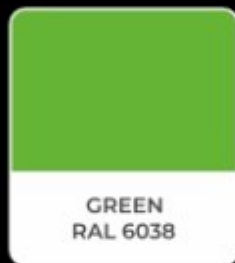
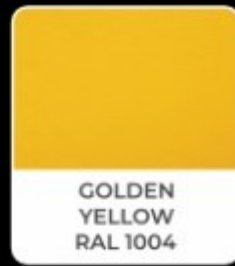


DUMBBELL RACK TWIN TIER
JFBR - 1130

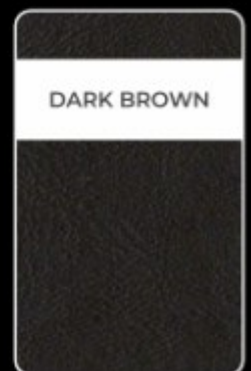
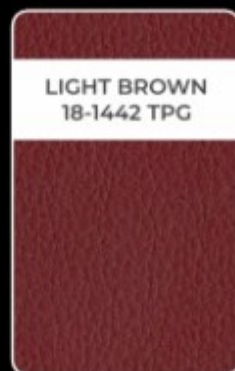
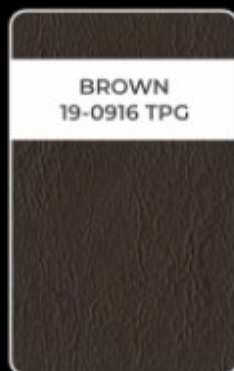
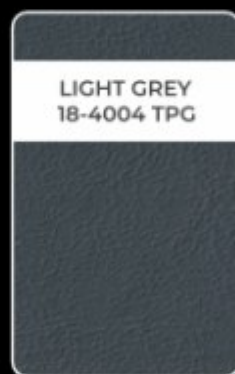


☑ L : 28 inches / 71 cms
W : 102 inches / 259 cms
H : 32 inches / 81 cms

FRAME



UPHOLSTERY



JERAI[®] **FITNESS LTD.**

A PIONEER IN FITNESS EQUIPMENT MANUFACTURING.



+91 86579 64733

+91 91520 04941

Website: www.jeraifitness.com / www.jeraihomegym.com

Email: sales@jeraifitness.com

Connect with us on   

Registered Office: D - 204, Gagangiri Complex, New Link Road, Near Mcdonald's, Kandarpada, Dahisar (west), Mumbai - 400 068, Maharashtra, INDIA.

Corporate Office: 209 - 212, Techno IT Park, Link Road, Borivali (West), Mumbai - 400 092, Maharashtra, INDIA.

Factory: Survey 215, Plot No. 08, 09, 13, 14, 18, 19, 22, and 23 of Survey No. 216 (P), Survey 217, Survey 218 (P), Unit No. 3A, 05, and 06 of Survey 219, Village Ghonsai, Wada, Palghar - 421 303, Maharashtra, INDIA.

Jerai Fitness Ltd. reserves the right to modify its products, specifications, and documentation at any time without prior notice. All trademarks, product names, and patents are the property of Jerai Fitness Ltd., in India and internationally. © Jerai Fitness Ltd., 2025. All rights reserved. All training structures, including indoor and outdoor rigs or wall-mounted setups, must be securely installed using appropriate fasteners. Installation and anchoring are the sole responsibility of the customer. Jerai Fitness Ltd. shall not be held liable for any injury, damage, or loss resulting from improper installation, misuse, or failure to follow safety guidelines.