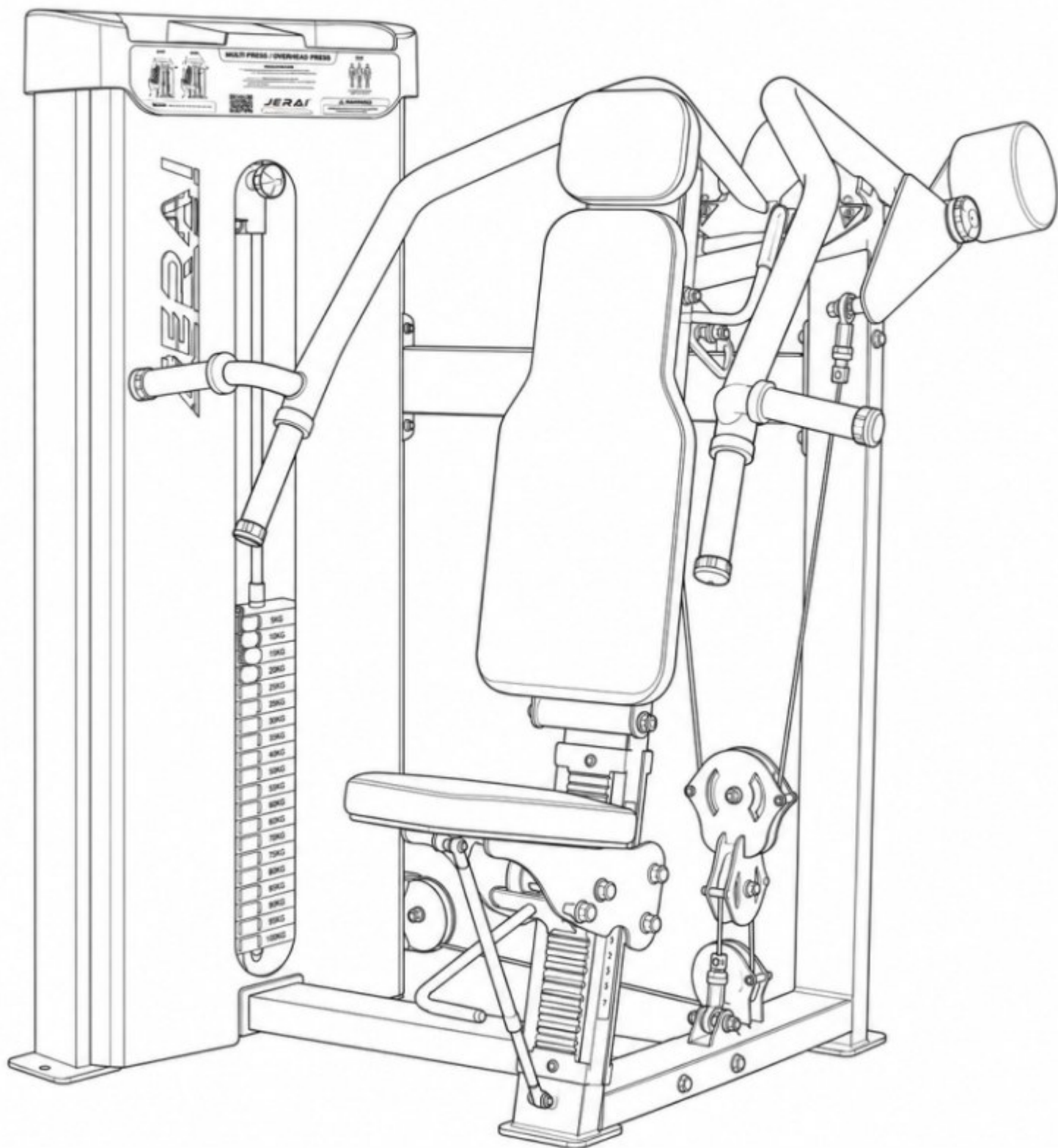


# PRODUCT CATALOGUE



**SINCE 1994**



Jerai Fitness is an Indian manufacturer with over three decades of expertise in designing and producing world-class fitness equipment. The company caters to a diverse clientele, including commercial gyms, hotels, corporate wellness centers, and real estate projects, serving both the domestic market and 26 international markets such as USA, UK, Germany, Japan, Australia, Sweden, UAE, Saudi Arabia, and France, among others. With 9 official international distributors, Jerai Fitness ensures seamless access, service, and support worldwide - combining global reach with strong regional impact.

Through years of industry experience, Jerai Fitness has developed strong capabilities in manufacturing processes, inventory management, distribution efficiency, and customer service, enabling it to consistently deliver reliable and innovative fitness solutions. A pan-India network of 15 exclusive showrooms strengthens customer engagement, provides accessible support, and enhances brand reach.

As a pioneer in automated manufacturing, Jerai Fitness incorporates robotic welding, advanced assembly techniques, and high-precision Turkish and Japanese machinery into its production processes. This modern infrastructure ensures accuracy, durability, and compliance with international standards, while enabling the company to scale operations, meet increasing global demand, and remain competitively priced.

# CROWN SERIES



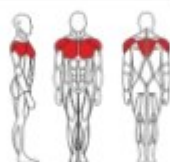
***The Crown Series** is engineered for environments that demand both performance and sophistication, from boutique wellness spaces and commercial gyms to luxury residential facilities. Built upon a robust frame comprising 50mm × 100mm and 50mm × 50mm rectangular steel tubing and finished with full-length 1.2mm CRC laser-cut shrouds on both sides, each unit presents a clean, uniform appearance. Premium nylon-coated cables, Kevlar belts, and refined upholstery ensure consistent reliability and a polished experience suited to sustained professional use.*



## PEC FLY / REAR DELT

JCRC - 101

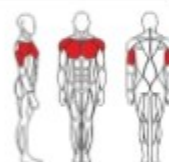
- ☑ L : 54 inches / 137 cms
- ☑ W : 74 inches / 188 cms
- ☑ H : 80 inches / 203 cms
- ☑ 220 lbs / 100 kgs



## VERTICAL CHEST PRESS

JCRC - 102

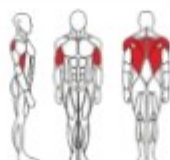
- ☑ L : 58 inches / 148 cms
- ☑ W : 58 inches / 148 cms
- ☑ H : 70 inches / 178 cms
- ☑ 220 lbs / 100 kgs



## DUAL LAT PULL DOWN

JCRB - 101

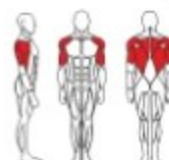
- ☑ L : 72 inches / 183 cms
- ☑ W : 52 inches / 132 cms
- ☑ H : 84 inches / 213 cms
- ☑ 220 lbs / 100 kgs



## ASSISTED DIP CHIN

JCRB - 102

- ☑ L : 52 inches / 132 cms
- ☑ W : 54 inches / 137 cms
- ☑ H : 88 inches / 224 cms
- ☑ 220 lbs / 100 kgs





## VERTICAL ROW

JCRB - 103

- ☑ L : 64 inches / 163 cms
- ☑ W : 48 inches / 122 cms
- ☑ H : 68 inches / 173 cms
- ☑ 220 lbs / 100 kgs



## OVERHEAD PRESS

JCRC - 101

- ☑ L : 60 inches / 152 cms
- ☑ W : 60 inches / 152 cms
- ☑ H : 62 inches / 157 cms
- ☑ 220 lbs / 100 kgs



## LATERAL RAISE

JCRC - 102

- ☑ L : 46 inches / 117 cms
- ☑ W : 54 inches / 137 cms
- ☑ H : 62 inches / 157 cms
- ☑ 165 lbs / 75 kgs



## BICEP CURL

JCRBT - 101

- ☑ L : 46 inches / 117 cms
- ☑ W : 66 inches / 168 cms
- ☑ H : 62 inches / 157 cms
- ☑ 165 lbs / 75 kgs





## SEATED TRICEP DIP

JCRBT - 102

- ☑ L : 78 inches / 198 cms
- ☑ W : 58 inches / 148 cms
- ☑ H : 62 inches / 157 cms
- ☑ 220 lbs / 100 kgs



## LEG EXTENSION

JCRL - 101

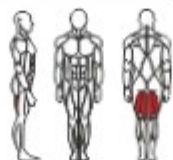
- ☑ L : 60 inches / 152 cms
- ☑ W : 46 inches / 117 cms
- ☑ H : 62 inches / 157 cms
- ☑ 220 lbs / 100 kgs



## SEATED LEG CURL

JCRL - 102

- ☑ L : 66 inches / 168 cms
- ☑ W : 46 inches / 117 cms
- ☑ H : 62 inches / 157 cms
- ☑ 220 lbs / 100 kgs



## PRONE LEG CURL

JCRL - 103

- ☑ L : 66 inches / 168 cms
- ☑ W : 44 inches / 112 cms
- ☑ H : 62 inches / 157 cms
- ☑ 220 lbs / 100 kgs





## HIP THRUST

JCRL - 104

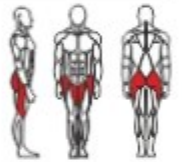
- ☑ L : 64 inches / 163 cms
- ☑ W : 48 inches / 122 cms
- ☑ H : 62 inches / 157 cms
- ☑ 165 lbs / 75 kgs



## ADDUCTOR / ABDUCTOR COMBO.

JCRL - 105

- ☑ L : 68 inches / 173 cms
- ☑ W : 34 inches / 86 cms
- ☑ H : 62 inches / 157 cms
- ☑ 220 lbs / 100 kgs



## STANDING CALF

JCRL - 106

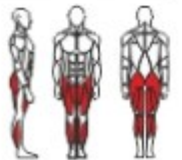
- ☑ L : 52 inches / 132 cms
- ☑ W : 52 inches / 132 cms
- ☑ H : 82 inches / 208 cms
- ☑ 220 lbs / 100 kgs



## SEATED LEG PRESS / HACK SQUAT COMBO

JCRL - 107

- ☑ L : 92 inches / 234 cms
- ☑ W : 45 inches / 114 cms
- ☑ H : 68 inches / 173 cms
- ☑ 220 lbs / 100 kgs





**ABDOMINAL MACHINE**  
JCRAB - 101

- ☑ L : 44 inches / 112 cms
- ☑ W : 52 inches / 132 cms
- ☑ H : 64 inches / 163 cms
- ☑ 220 lbs / 100 kgs

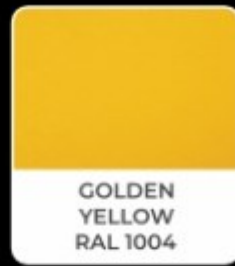
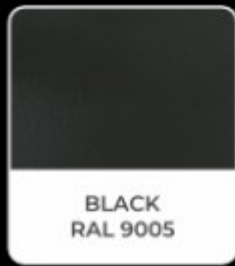


**TWIN ADJUSTABLE PULLEY**  
JCRMP - 101

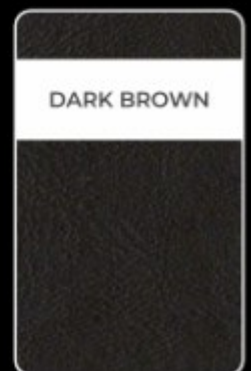
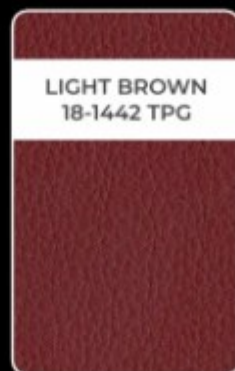
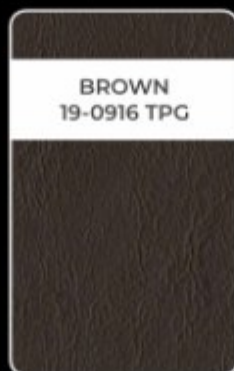
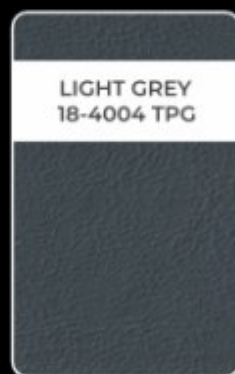
- ☑ L : 45 inches / 114 cms
- ☑ W : 64 inches / 122 cms
- ☑ H : 90 inches / 229 cms
- ☑ 220 lbs / 100 kgs X 2 Stacks



# FRAME



# UPHOLSTERY



# **JERAI<sup>®</sup>** **FITNESS LTD.**

A PIONEER IN FITNESS EQUIPMENT MANUFACTURING.



+91 86579 64733

+91 91520 04941

Website: [www.jeraifitness.com](http://www.jeraifitness.com) / [www.jeraihomegym.com](http://www.jeraihomegym.com)

Email: [sales@jeraifitness.com](mailto:sales@jeraifitness.com)

Connect with us on   

Registered Office: D - 204, Gagangiri Complex, New Link Road, Near Mcdonald's, Kandarpada, Dahisar (west), Mumbai - 400 068, Maharashtra, INDIA.

Corporate Office: 209 - 212, Techno IT Park, Link Road, Borivali (West), Mumbai - 400 092, Maharashtra, INDIA.

Factory: Survey 215, Plot No. 08, 09, 13, 14, 18, 19, 22, and 23 of Survey No. 216 (P), Survey 217, Survey 218 (P), Unit No. 3A, 05, and 06 of Survey 219, Village Ghonsai, Wada, Palghar - 421 303, Maharashtra, INDIA.

Jerai Fitness Ltd. reserves the right to modify its products, specifications, and documentation at any time without prior notice. All trademarks, product names, and patents are the property of Jerai Fitness Ltd., in India and internationally. © Jerai Fitness Ltd., 2025. All rights reserved. All training structures, including indoor and outdoor rigs or wall-mounted setups, must be securely installed using appropriate fasteners. Installation and anchoring are the sole responsibility of the customer. Jerai Fitness Ltd. shall not be held liable for any injury, damage, or loss resulting from improper installation, misuse, or failure to follow safety guidelines.