



STOCKZ

# SPORTSFLOORING ROLLS

DATASHEET

[www.stockz.eu](http://www.stockz.eu)

# CUSTOMER CARE COMES FIRST!

**Stockz B.V.** was founded in 2017 by two ambitious entrepreneurs with a clear mission: to ensure that fitness flooring is no longer an afterthought. Too often, clubs faced the same recurring problems:

- Delayed openings due to late deliveries
- Quality issues caused by poor flooring choices
- Budget overruns due to last-minute purchases

Large European rubber flooring manufacturers were not set up to deliver smaller but steady quantities with the right level of service and quality for such a demanding and specific market as the fitness industry.

**Stockz** makes the difference. We offer a wide range of high-quality sports and fitness flooring, available directly from stock and at competitive prices. This allows clubs to complete their projects on time and within budget.

We also take pride in contributing to the circular economy: our flooring products are made almost entirely from recycled truck and car tires.

Our product range includes:

- Sports flooring by the roll
- The most versatile range of fitness tiles – designed for all types of training environments, from home gyms to hotels, corporate fitness spaces, and every functional, strength, and free-weight zone in commercial gyms
- Rubber underlay and shock-absorption solutions

In addition to our products, we provide expert guidance to help clients choose the right flooring for each specific application, ensuring optimal performance, safety, and durability.

**Stockz B.V.** operates from its office and warehouse in Hattemerbroek, the Netherlands, and delivers quickly and reliably throughout Europe and beyond.

## YOU ARE WELCOME TO COME AND SEE US!





# TABLE OF CONTENTS

---

I.	<b>THICKNESS &amp; COLOURS</b>	<b>02</b>
II.	<b>SPORTSFLOORING ROLLS</b>	<b>04</b>
III.	<b>KEY PERFORMANCE BENEFITS</b>	<b>07</b>
IV.	<b>INSTALLATION &amp; CLEANING</b>	<b>08</b>
V.	<b>BENEFITS</b>	<b>10</b>

---

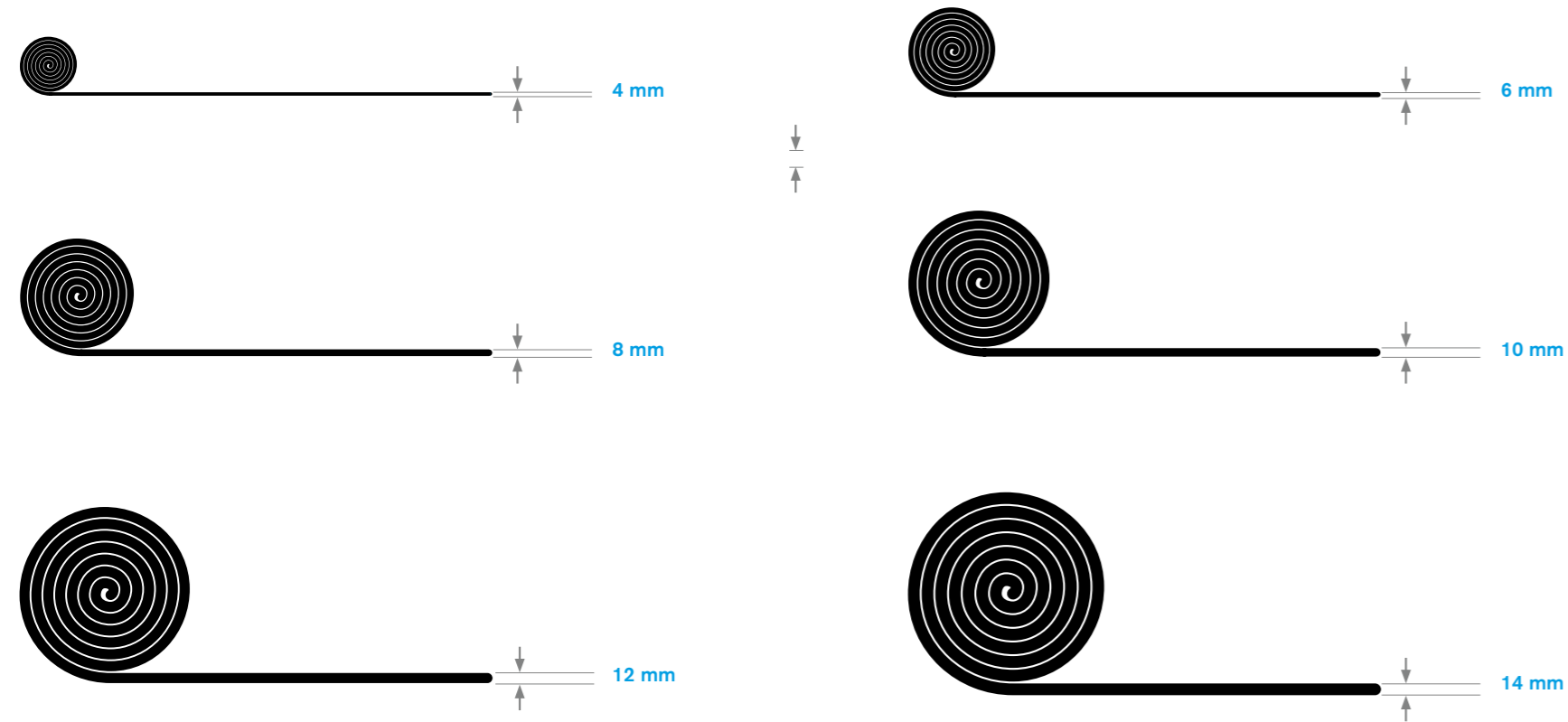
01.	<b>PURE BLACK</b>	<b>12</b>
	<b>FIVE</b>	
	<b>CLASSIQ</b>	
	<b>GRAPHITE</b>	
02.	<b>OUR COLOUR RANGE</b>	<b>14</b>

---

# I. THICKNESS & COLOURS

Our roll flooring is available in a suitable thickness for every purpose. From as thin as **4 mm** all the way up, in **2 mm** increments, to **14 mm**. Our standard roll width is **1.25 meters**.

## THICKNESSES

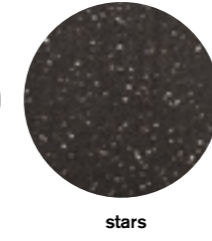
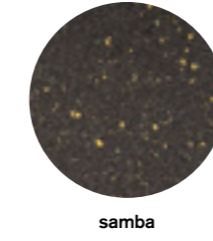
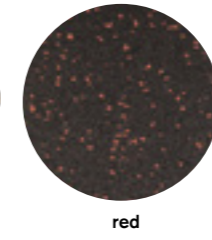
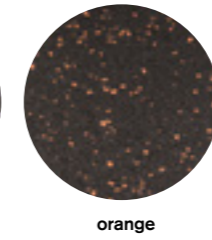
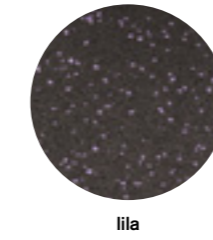
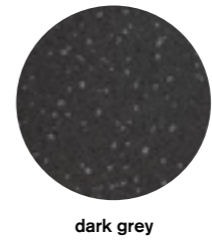
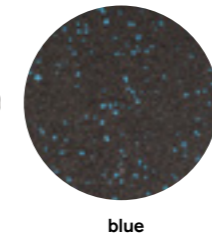
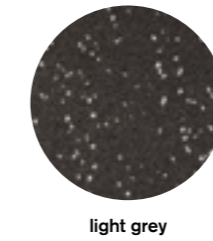


# OUR COLOURS

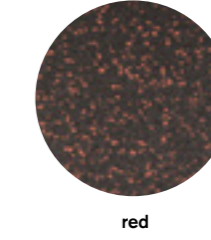
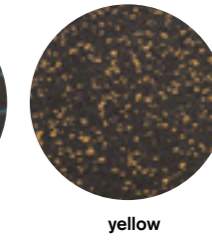
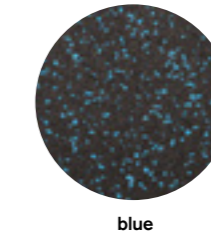
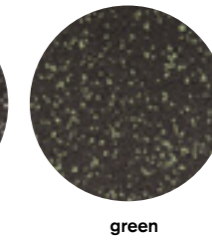
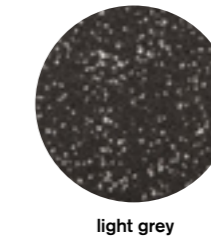
## PURE BLACK



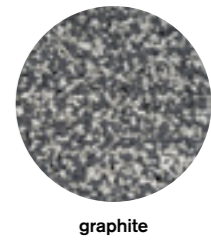
## FIVE



## CLASSIC



## SPECIALS



## II. SPORTSFLOORING ROLLS

*Thickness selection* should always consider building characteristics, training style, equipment weight, and facility layout.

Our sports flooring rolls are produced primarily from **recycled truck-tire rubber crumb**, creating a highly durable surface engineered for demanding training environments.

Because truck tires contain **dense, high-quality rubber**, the resulting flooring has a **finer granulate and smoother surface finish** than many standard recycled rubber products.

Colour options incorporate **virgin EPDM rubber**, delivering vibrant tones while maintaining the strength and resilience of the base material.

Selecting the right flooring thickness depends on **training intensity, equipment used, and desired shock absorption**. The guidelines below provide a flexible reference for designing training zones.

**FROM 4 MM** Ideal for **low-impact training areas** and floor protection. Commonly used in cardio zones, spinning studios, yoga and mobility spaces, physiotherapy rooms, and exhibition or multi-purpose areas.

**FROM 6 MM** A versatile option for **general fitness spaces** with moderate activity. Suitable for gym floors, group fitness studios, aerobics classes, and areas with light equipment.

**FROM 8 MM** Designed for **functional training environments** where impact and dynamic movement increase. Frequently used in functional fitness zones, martial arts spaces, and areas with moderate equipment use.

**FROM 10 MM** Built for **high-traffic and higher impact training areas**. A good choice for free-weight zones with medium loads, strength training spaces, and facilities where durability and sound reduction are key.

**FROM 12 MM** Recommended for **heavy-duty strength and conditioning areas**. Ideal for heavy free-weight zones, CrossFit or cross-training spaces, and environments where maximum impact protection and durability are required.



### III. KEY PERFORMANCE BENEFITS

*Its durability and performance also make it suitable for **high-traffic sports and recreational facilities**, including ice rinks, mountain stations, and other demanding environments.*

Designed specifically for **fitness and high-activity spaces**, the flooring offers:

- Excellent impact and shock absorption
- Sound reduction for weights and equipment
- Moisture and water resistance
- Rot-proof durability
- Long-lasting elasticity and resilience
- A compact, robust surface suitable for intensive daily use

Designed for **Modern Fitness Spaces**. The flooring is widely used in:

- Commercial gyms and fitness clubs
- Cross-training and functional training facilities
- Strength and free-weight areas
- Group fitness and studio spaces
- Personal training studios
- Locker rooms and changing areas

## IV. INSTALLATION & CLEANING

### SUBFLOOR

The surface must be smooth, level (levelled) and clean/dry.

### PREPARATION

- When rolling out the rubber rolls, they will curl up at the ends. We therefore recommend leaving the rolls at room temperature for a few hours (ideally 24h) before final laying and cutting to allow the surface to acclimatise.
- Underfloor heating must be turned off 24 hours before installation and must only be turned back on after the adhesive has cured.

### GLUE TO THE SUBFLOOR

For complete surface adhesion and due to characteristic roll tensions, we recommend gluing the rubber to the substrate. In this case, the glue manufacturer's specific adhesive recommendations should be followed.

If you have any doubts about the substrate or areas of application, please contact the relevant adhesive manufacturer directly. Head joints and seams should be fixed where necessary.

If the joints are coming up after glueing the roll down, it is recommended to place some weight on the joint to keep it down until the glue is fully cured.



### CUTTING

The material can be cut using a sharp knife or a carpet knife.

### CLEANING

To prevent excessive dirt on the floor, we recommend installing dirt traps at entrances. Keep the floor free of oil, petrol and acids. The floor is best cleaned with a damp cloth or mop. In addition, regular sweeping or vacuuming is sufficient. Heavier dirt can be cleaned with a mild detergent (like our *BioFloorGuard Probiotic Rubber Renew*) or mild soap dissolved in water. Always clean with clean water afterwards.

Stains must be removed as soon as possible because certain substances can react with the surface. After this, these stains are very difficult to remove, or can no longer be removed at all. We always advise to contact a professional party for cleaning the floors. No claims can be accepted when unauthorized cleaning products are used.

### REMARKS

Although highly compressed, it can still absorb slightly porous surface liquids. So, depending on the application, for hygienic reasons and to simplify cleaning, a 2-K PU waterproof sealant or hardwax can be applied to the installed floor covering using a suitable coating roll.

V. BENEFITS



**HIGH DENSITY**



**EUROPEAN MANUFACTURED**



**ALMOST EXCLUSIVELY RECYCLED RUBBER USED**



**ODOURLESS**

## 01. PURE BLACK • FIVE • CLASSIQ • GRAPHITE

### DIMENSIONS

Thickness	4 mm • 6 mm • 8 mm • 10 mm • 12 mm • 14 mm
Roll width	1.250 mm
Roll length	As required
Tolerances	width $\pm$ 1,5 % • length $\pm$ 1,5 %

### MATERIAL PROPERTIES

- Tough elastic
- high compression resistance and impact strength
- skid and spike resistant
- non-slip high abrasion resistance
- comfortable
- noise insulating.

### COMPOSITION

PURE BLACK	SBR rubber granules bonded with PUR
FIVE	SBR and EPDM rubber granules bonded with PUR
CLASSIQ	SBR and EPDM rubber granules bonded with PUR
GRAPHITE	EPDM rubber granules bonded with PUR (extremely low % SBR)

### SPECIFICATIONS

Bulk density	Approx. 980 kg/m <sup>3</sup>	
Ultimate tensile strength	EN 12230 pure black EN 12230 five/classiq	1.8 N/mm <sup>2</sup>   elongation at break: 98 % 1.8 N/mm <sup>2</sup>   longation at break: 118 %
Compression	EN 12230 10 mm	9% DVR with a compression of 25%
Max. compression	EMPA AT 5N/mm <sup>2</sup> 12 mm:	2.32 mm without visible damage
Shock absorption	EN14904 6 mm 15,7 % • 8 mm 17,4 % • 10 mm 18,5 % • 12 mm 21,0 %	
Temperature stability	30° C to +80° C <small>in resting condition -120° C and for short periods up to +300° C)</small>	
Dimensional change after heat exchange	EN 434 pure black EN 434 classiq	Longitudinal 0.15 % • Across 0.0 % • Warping 0 mm Longitudinal 0.25 % • Across 0.0 % • Warping 0 mm
Thermal conductivity	EN 12230	0.17 W/(mK)
Fire behaviour	EN 13501	EFl - S2 pure black/five/classiq Cfl-S1 graphite
Sound improvement	EN ISO 10140	6 mm 17 dB • 8 mm 18 dB
Anti slip property	EN 16165 SECO ARGV3 Art. 14	Class R 13 i.a.w. bfu 2.032.1 & Class GS 4
Dynamic coefficient of friction	EN 13893	$\mu$ 0.57
Electrical properties	EN 1815	-0.7 kV (antistatic)
Additional specifications	Static stiffness Dynamic stiffness	at a maximum load of 8 kN (evaluation)* at average loads from 0.4 to 4 kN and frequencies from 5 to 40 Hz (evaluation)*
	Vapour diffusion Chemical behaviour EN 423	Vapour permeable Resistant to water, numerous diluted acids and alkaline solutions
	Chically neutral • UV-resistant	

\*charts available upon request



### 03. OUR COLOUR RANGE

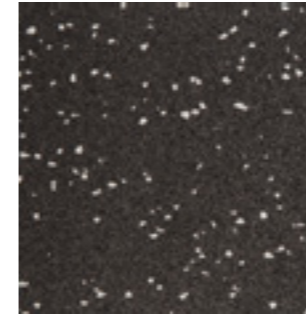
**PURE BLACK**

SBR rubber granules bonded with PUR

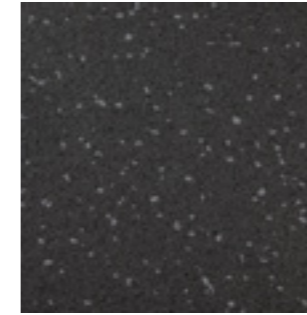


**FIVE**

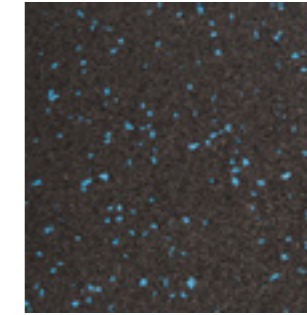
95% SBR and 5 % EPDM rubber granules bonded with PUR



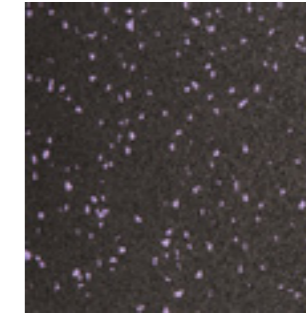
light grey



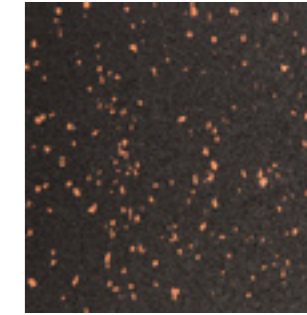
dark grey



blue



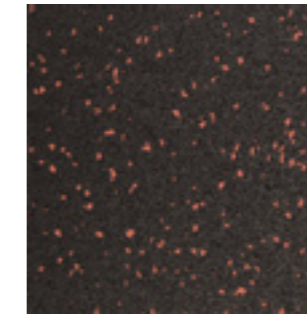
lila



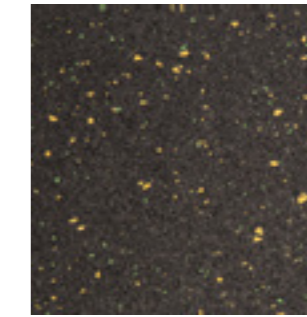
orange



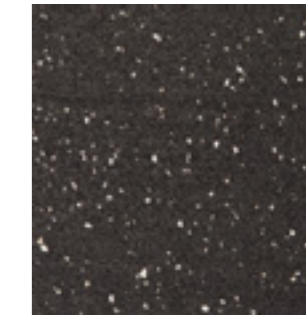
yellow



red



samba

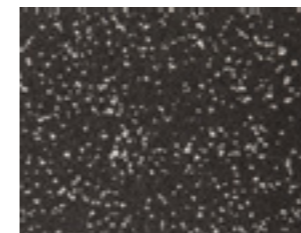


stars

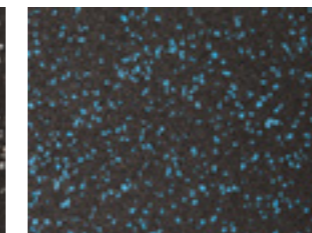


**CLASSIQ**

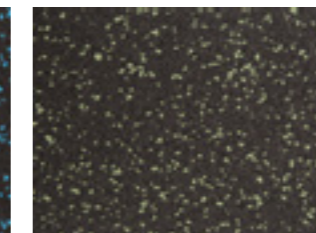
80% SBR and 20 % EPDM rubber granules bonded with PUR



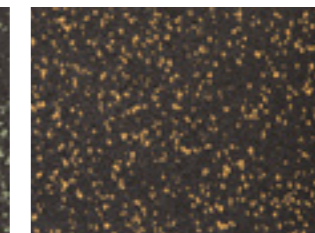
grey



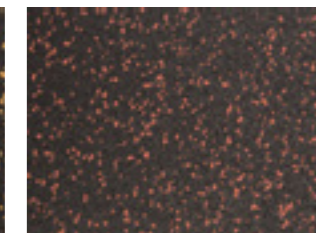
blue



green



orange



red

**GRAPHITE**

EPDM rubber granules bonded with PUR (extremely low % SBR)



graphite





**THANK YOU**