



**WAKEFIELD**  
REGIONAL COUNCIL



**Our disability plan.**

**2026 to 2030.**



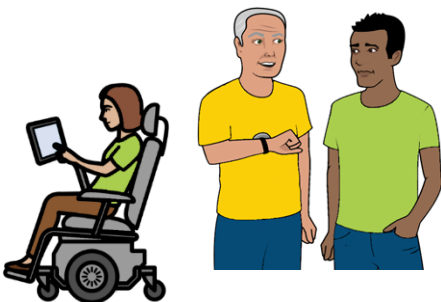
## Each person is different



We know each person with a disability

is different. They may

- need different help
- want to do different things
- have different ideas.



You may have a disability.

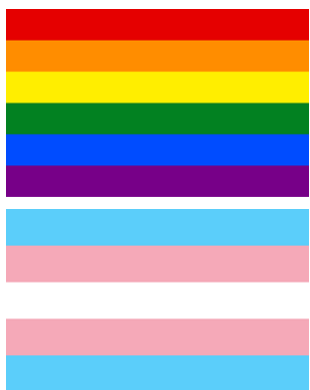
It makes it hard to join in.

## But



More things may make it hard. Like you are

- Aboriginal
- a woman
- a child.



You may be

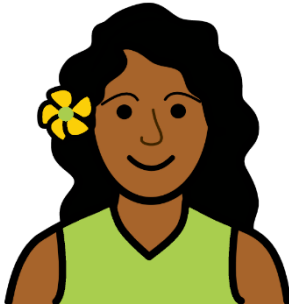
- gay
- lesbian
- trans.

You may use a different word. Like queer.



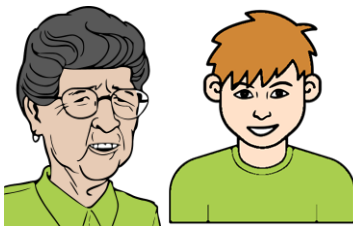
You may live

- in a big town
- in a small town
- out of town. Like in the bush.



You may speak a different language at home.

It is **not** English. It may be Filipino.



You may be old. Like you are 78.

You may be young. Like you are 17.



You may help a person with a disability.

Like you help them shower.

They may be family. Like your mum.

You do not get paid. You are their carer.



We want each person to join in.



We made a new ramp. Port Wakefield post office.



## Our last plan. Things we did.



We made some places easy to use.

Like at Balaklava Caravan Park.

It has a cabin you can use. It has

- a ramp
- a wide door
- a bath room you can use.



At Balaklava swimming pool. It has

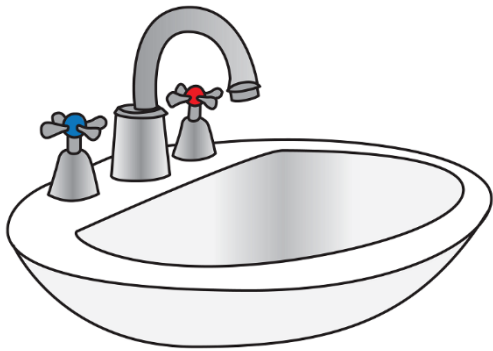
- a ramp
- a bath room you can use.



We put in new toilets. They are easy to use.

Like they have

- rails
- wide doors.



We put some things down low. Like the

- sink
- soap
- door handle.

They are easy to reach.



These toilets are in

- Lochiel. It is next to the town hall.
- Port Wakefield. It is at the wharf.
- Snowtown. It is at the town centre.



We have a community bus.

You may get the bus

- from your home
- from the Council office.



It can take you places you need to go. Like

- the shops
- a different town.

Like you are in Port Wakefield.

You want to go to Balaklava.



The bus has a time table.

It tells you when the bus goes.

Like you are in Balaklava.

You want to go to the shops.

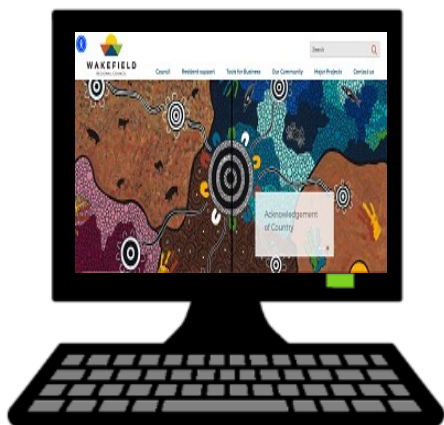
It is each Thursday morning.



We made more Council places easy to use.

Like the foot paths. We made them

- wide
- flat
- go down at the road. There is **no** step.

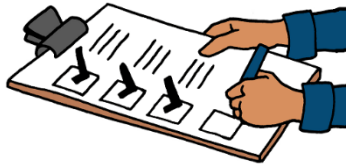


We made our website easy to use. You can

- make the words big
- change the colours.
- hear the words.



## What we must do



We must check what we do. It may be

- the money we give places.

Like community groups

- our rules. They must be fair for each person
- council places. Like the library.

It must be easy to use.



We must check each person can join in.

We may need to give more help. Like money to

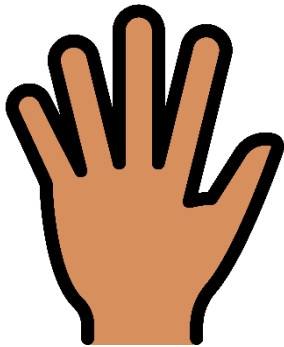
- have an Auslan interpreter
- build a ramp.



Balaklava swimming pool. It is easy to use.



## Our new plan

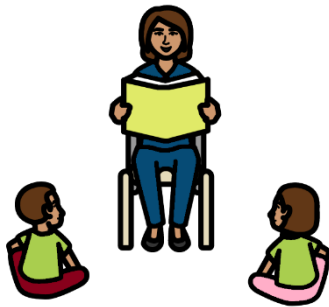


It has 5 big ideas. They are

- you can join in
- you can learn. You can work
- you get the right help
- you can stay well
- you are safe. Things are fair for each person.

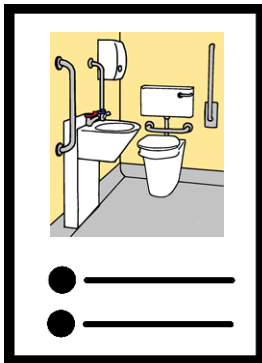


# 1. You can join in



You can go to things we do. Like events. It may be

- at the library
- for school holidays
- outside. Like in a park.



Council will have rules. We must follow the rules.

It is so each person can join in.

Like you use a wheel chair.

We must have a toilet you can use.



We give you good help. We teach

- our staff
- the people who run Council.

They will know how to help you.



We help more places learn.

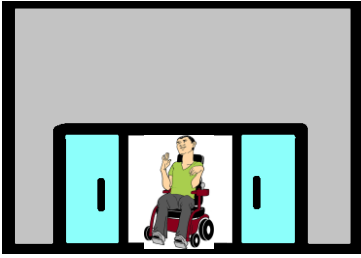
It is how to give you good help. Like

- at the shops
- sport groups. Like the footy club.



We check you can use

- our buildings. Like the library
- sport places. Like the pool.



Our new places will be easy to use.

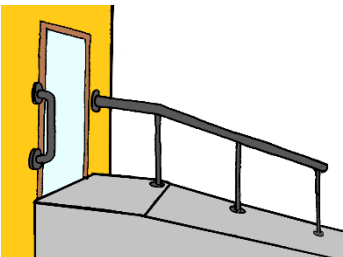
Like we build a new building. It will have

- a wide door. You can get your wheel chair in
- more signs. They help you know where to go.



We will fix more foot paths. We make sure they

- are flat
- are wide. You can use your wheel chair
- go down to the road. There is no step.



A person wants to build a new place. Like a shop.

We check all people can use it. Like it has

- a ramp
- a car park near the door.

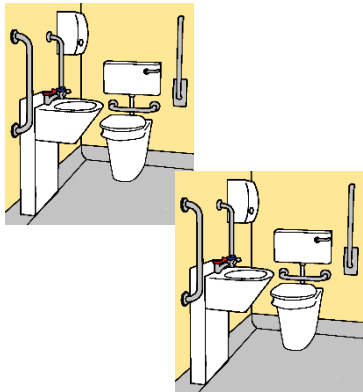


We will check our car parks.

You may need more space.

Like to get your wheel chair out of the car.

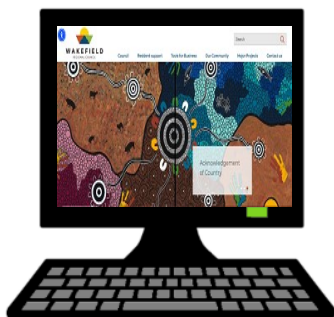
We will plan to make more car parks for you.



We will check you can use our toilets.

We may build more toilets.

They are easy to use. Like they have rails.



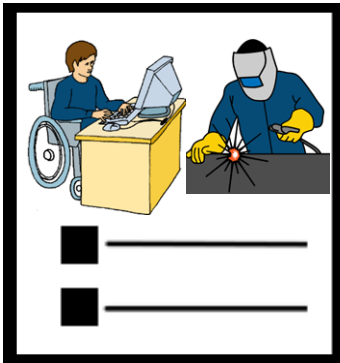
We will make things easy to read. Like

- our website
- our papers.



**2. You can learn.**

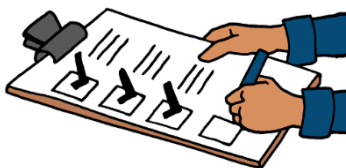
**You can work.**



We want more people with a disability  
to work for Council.

We will plan how to change things.

It is to make the job right for you.



We will check

- how we tell you about jobs
- can you do the jobs
- do you get the right help? It is for your job.



We may help you

- ask for a job
- do the job. Like you need a different desk.

It is to fit your wheel chair.



We help you do a good job. Like we

- help you learn the job
- show you new things. Like a new tool.

You can have a person to talk to.

We call them a mentor.

**And**



We will help your boss.

They can do training. They learn how to help you

They have a person to talk to. It is their mentor.



You may want to help out. Like at the

- community garden
- footy club.

You do **not** get paid. We call you a volunteer.



We want more people with a disability  
to be volunteers. We will help you find

- the right person to talk to
- the right volunteer job for you.



Our community garden. It is a good place to help out.



### 3. You get the right help.



You live in Wakefield Regional Council.

You may need help. Like to

- have a shower
- go places.
- talk to people. You may use sign language.



We will make a list.

It will have all the help you can get.

The list will be

- on our web site
- on paper. You can ask for a copy.



We will help you find the right help. We will have

- a staff person to talk to
- expos. You can see all the different help.

You can talk to the different places.



We will work with places that can help you.

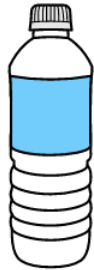
Like disability services.

We may help you talk to them.

We help them know what help you need.



## 4. You stay well.



You need to look after your body. Like you

- eat good food
- drink water
- move your body.



You need to look after your mind. Like

- see your friends
- learn new things
- think about happy things.



We will help with some things.

We will have places you do these things. Like

- move your body. It is at the pool
- learn. It is at the library.



We have a plan. It helps each person stay well.

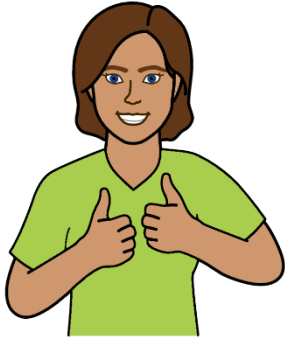
It is our Public Health Plan.

You can get a copy of it.



It is **not** in Easy English.

You can ask for help to read it.



## 5. You are safe.

Things are fair for all.



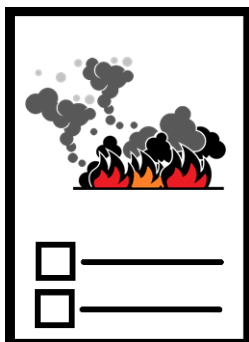
All people have rights. Like the right to

- learn
- be safe
- do the same things as other people.

Like have a job

- vote. Like you choose our Council.

We all vote to choose them.



A bad thing may happen. Like a bush fire.

We have a plan.

It is to keep each person safe.



A big fire starts. You must leave your home.

You may have to drive.

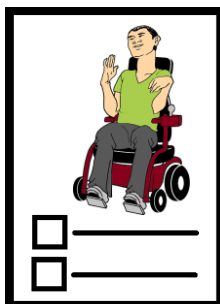


You may need help.

Like you use a big wheel chair.

It can **not** go in a car.

You may need an ambulance.



You need a plan for you. It is to stay safe.

We will check you get help to make this plan.

We will find the best person to talk to.

They will help you make your plan.



## About this fact sheet

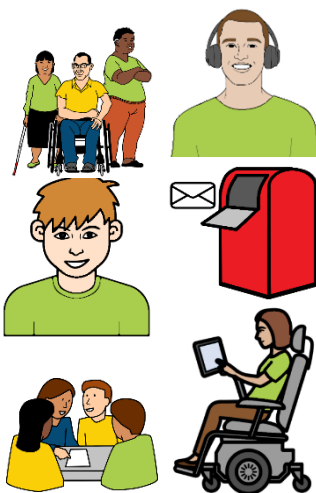


This is based on Wakefield Regional Council Disability Access and Inclusion Plan. 2026 to 2030.



Access Easy English wrote the Easy English. April 2026.

### Images

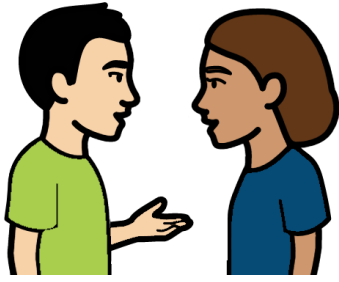


We can use these images. They are from

- CHANGE [www.changepeople.org](http://www.changepeople.org)
- Inspired Services
- The Noun Project
- Picto Selector
- Pixabay
- Tobii-Dynavox

We did **not** use AI in any part of this development.

The photos are from Wakefield Regional Council.

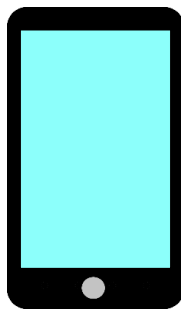


**Talk to us**



**Come to our office.**

**Scotland Place. Balaklava.**



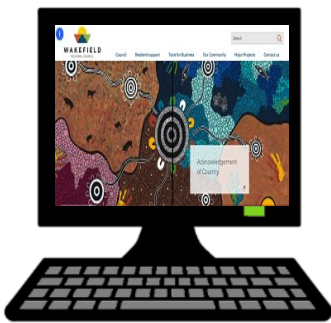
**Call**

**08 8862 0800.**



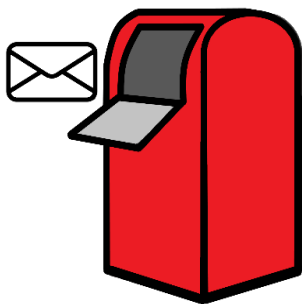
**Email**

[admin@wrc.sa.gov.au](mailto:admin@wrc.sa.gov.au)



**Go to**

[www.wrc.sa.gov.au](http://www.wrc.sa.gov.au)



**Write to us.**

**Wakefield Regional Council**

**PO Box 167**

**Balaklava SA 5461.**