

ntgrate®

sustainability | acoustics | design

version
08-2025



ntgrate bv
Evolis 91
8500 Kortrijk (BE)
+32 56 71 95 43
info@ntgrate.eu
www.ntgrate.eu

INSTALLATION MANUAL ROLLS



15 year warranty

To benefit from our 15-year warranty, our woven vinyl flooring must be installed correctly and in accordance with the suitability criteria of standard EN1307 or NBN EN ISO 10874. Failure to follow the installation and cleaning instructions may void the warranty.

If, during a warranty claim, it appears that the instructions (installation & cleaning) were not followed, ntgrate cannot be held responsible for errors resulting from incorrect installation or improper cleaning.

Ntgrate floors are only suitable for indoor applications.*

After installation of up to 100 m² a thorough evaluation must be carried out. Do you notice any deviations in relation to the original specifications or you notice a manufacturing error, please contact your ntgrate advisor before proceeding with the installation. This way we can take the necessary steps to bring the project to a successful conclusion. Failure to follow installation guidelines may void the warranty. Ntgrate is not liable for errors resulting from unprofessional installation. The warranty is only valid if the floor covering is correctly installed and maintained.**

Ntgrate flooring must be installed by a certified installer with experience in installing flat woven vinyl. We strongly recommend that you only start installing ntgrate floors after all other work in the room has been completed. Otherwise this may result in visible damage and contamination.

Ntgrate flooring is available in various colours, structures and patterns. Resulting in an endless number of possibilities. Correct placement is essential for optimal results. So please follow these instructions carefully.

*excluding areas of application and environments with specific technical requirements.

**Please also consult the ntgrate sales and warranty conditions before installation.

Index

1 | Install with confidence

Check	3
Storage	3
Acclimatization	3

2 | Preparation of the substrate (screed)

Identifying the type of substrate	4
Subfloor moisture content	5
Moisture resistant membrane (DPM)	5
Permissible deviation	6
Subfloor preparation	6

3 | Placement

Laying patterns	7
Bonding	7
Temperature conditions	8
Visual inspection	8
Determine starting point	9
Cut the lengths to size along the length of the roll.	9
Well-aligned and straight-cut seams	10
Gluing	10
After placement	11
Raised floors	11
Wooden floors	11
Stairs	11

5 | Regulations

Maintenance instructions	12
Preventive points of attention	12
WARRANTY	13

Personal protection



SHOES



SAFETY GLASSES



GLOVES

Tools



PENCIL



MEASURING
TAPE



PAIR OF SCIS-
SORS



SUITABLE UTILI-
TY KNIFE



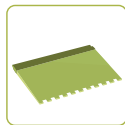
CARPET HOOK
BLADE



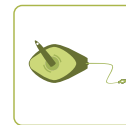
RAIL CUTTER



GLUE



NOTCHED TRO-
WEL



CHALK LINE
MARKER



PRESSURE ROLL



SEAM ROLLER

Roll/tile selection limits

We only recommend some designs as a ROLL (and therefore not in tiles):

Gentle collection | this one has a strong lined (linear) continuous effect! If placed as a "tile", it should always be placed as a checkerboard (quarter turn).

Soft Sophie | no pattern, plain and very light colour where the shadow lines are visible very quickly and a stronger joint image can be created.

We recommend some designs as TILES (and not as rolls):

Wild collection | strong design with different weave patterns.

Sharp collection | only available in plank-shaped tiles

1 | Install with confidence

Visible defects must be reported immediately (with photos) according to our general terms and conditions. Once cut or installed, this cannot be taken back. Upon receipt, please check that the shipment is in good condition and that you have received the correct number of boxes per ordered reference. Is the shipment undamaged?

Always use scissors to open the packaging and never a snap-off knife.

Check



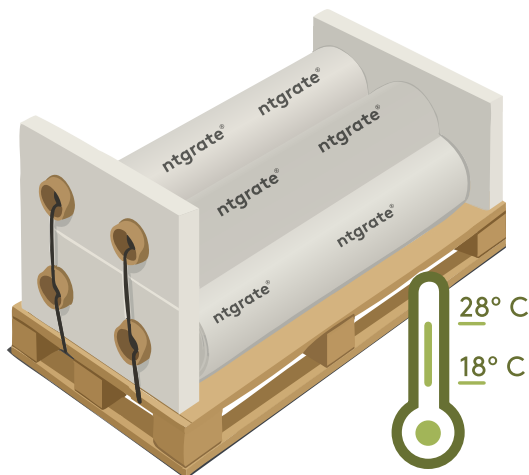
Visual inspection

Before installation, check each roll for visual defects. These must be submitted before cutting or placing the roll.

Reference

Please check your order form to ensure you have received the correct references and quantities.

Storage



For storage, it is best to leave the shipment intact as you received it. Place the shipment in a closed space where the temperature is between 18 and 28 degrees Celsius.

If you remove the rolls from the pallets for storage, do not stack them on top of each other. Do not place heavy objects on top of the rolls. This way you avoid structural differences by flattening the rolls.

Acclimatisation



Rolls

Rolls should be acclimatised for 48 hours before installation. Place the rollers in the space where the final installation will take place.

Ambient conditions

The Ntgrate floor covering can be installed when the subfloor has a minimum temperature of 15 degrees Celsius and the room temperature is between 18 and 25 degrees Celsius. The relative humidity should not be higher than 75% and not lower than 55%. The ideal humidity level is 65%. The permitted temperature fluctuation after installation is maximum +/- 10°.

2 | Preparation of the substrate (screed)

Good preparation is essential for a problem-free installation. The appearance of your ntgrate tiles and rolls will only be as good as the quality of the base it is installed on.

Subfloors must be prepared in accordance with national (Buildwise TV 262) and European standards. If necessary, remove old residues of the previous floor covering, old glue and/or levelling residues.

The surface must be hard, flat, smooth, clean (free of dust, oil and grease) and dry and also free from defects (cracks, tears) and suitable for this application. Where necessary, cracks and fissures must be carefully repaired with a suitable repair product (e.g. 2-component epoxy resin or silicate resin + anchoring clips) before treating the substrate with a suitable bonding agent/primer and levelling it.

Make sure the substrate is flat and free of chemicals and other products that could affect the floor and substrate preparation products. The above basic conditions must always be respected regardless of the type of surface. Check the residual moisture content of the substrate using the Carbur measuring method (see page 5 - moisture content of the substrate).

Identifying the type of substrate

First of all, the type of substrate must be identified: what material is the substrate made of and what is its condition?

The above basic conditions must always be respected regardless of the type of surface.

Screed (cement-based)

A cement-based subfloor must be flat, clean and dry (see page 5 - moisture content). When a porous surface is encountered (and one chooses to proceed directly on this substrate), a primer or bonding agent must be applied. This product must be compatible with the selected adhesive. Levelling is always necessary, even on a new screed. Especially if the flatness/roughness/continuity of the substrate does not allow further work to be carried out directly on it. For this, consult the adhesive manufacturer's instructions for use. For all information, please consult TV 262 page 66 (concrete floors: page 68)

Anhydrite-based screed as well as polyconcrete and cast-in-place concrete

Always contact your substrate specialist or adhesive supplier.

Wood

A wooden base such as plywood, chipboard or hardboard is possible. The following points should be kept in mind: a normal indoor climate must prevail during installation; there is a risk of deformation due to moisture ingress or overloading. At a load of 75 kg over a distance of 20 cm, no deformation should occur.

The seams should be carefully sanded and touched up to reduce the risk of showing through. To reduce the risk of showing through, great care should be taken when touching up and sanding the seams, and if not, apply a suitable primer and level. If the wooden base is in poor condition, or if there are many seams or irregularities, we recommend replacing it.

Installing ntgrate floor covering over hard slabs is only possible if there is no height difference between the seams of the floor slabs.

If there is a height difference, there is a risk of "telegraphy" occurring, which means that marked lines will become visible on the woven top layer over time. These lines are permanent and cannot be removed.

Absorbent substrate

In case of a highly absorbent surface, a primer should be applied. By applying a few drops of water to the surface, you can determine the degree of absorbency: the faster the water disappears, the more absorbent

the surface is. Depending on the type of substrate, flatness, roughness and absorbency, a suitable preparation of the substrate must be determined.

Raised floor (computer floor, technical floor)

Installation on a raised floor is only possible with tiles. Never with rolls.

Existing textile or elastic floor covering

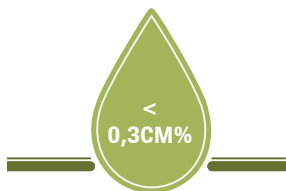
An existing soft subfloor such as (under)carpet can never serve as a subfloor because it does not have the right properties. These floors must always be completely removed first.

Metal floors, stone floors, polyconcrete

Always contact your substrate specialist or adhesive supplier.

! Ensure that the various products required for subfloor preparation always come from the same supplier. Read their instructions carefully which vary depending on the type of subfloor!

Subfloor moisture content



The moisture content of the subfloor must comply with local or national standards for the installation of woven floor coverings.

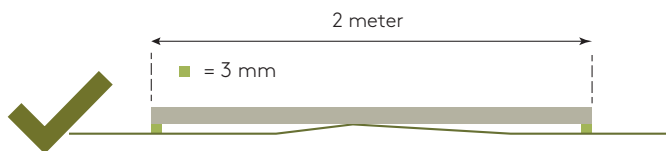
CM = carbide measurement

- Cement screed without underfloor heating less than 2.0 CM%
- Cement screed with underfloor heating less than 1.8 CM%
- Unheated screed of anhydrite (calcium sulphate) less than 0.5 CM%
- Anhydrite (calcium sulphate) screed with underfloor heating less than 0.3 CM%
- Polyconcrete: the moisture content of the polyconcrete subfloor may not exceed 2% CM (carbide method) for a cement-based substrate
- These values are also described in the technical information note TV 262 and TV 241 of BUILD-WISE

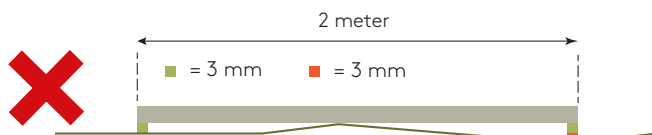
Moisture resistant membrane (DPM)

Solid ground situations in concrete or stone subfloors must have an effective damp proof membrane (DPM) in accordance with the National Standards for the Installation of Textile Floor Coverings (Buildwise TV 262). It is the responsibility of the installer to obtain appropriate advice from the DPM manufacturer and apply in accordance with their recommendations.

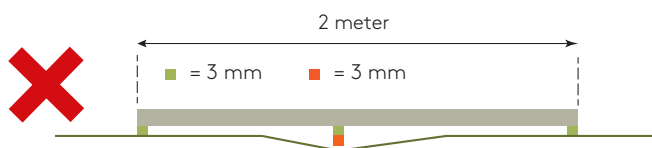
Permissible deviation of subfloor



The permissible deviation is a maximum of 3 mm under a 2-metre batten.



With a 20 centimeter ruler this is only 1 mm.



Subfloor preparation



Primer and leveling

Leveling is applied to correct unevenness and improve smoothness (surface structure). Treat the surface with a bonding layer/primer. Then apply a self-levelling compound at least 24 hours (and only if 100% dry) before installing the floor covering.

Purpose of the primer/undercoat

- obtain good adhesion between the substrate and the leveling layer
- make the surface evenly absorbent
- to fix the remaining dust after dusting



Sanding & vacuuming

After drying, this leveling compound can be sanded and vacuumed. Thorough sanding is necessary for a visually perfect result. Thorough vacuuming ensures good adhesion of the adhesive to the leveling compound.

Very important: ensure a clean and dust-free starting base.

3 | Placement

We strongly recommend that you only start installing ntgrate flooring after all other work in the room has been completed. Otherwise this may result in visible damage and contamination.

Please consult our adhesive list for adhesive selection. For rolls and cuts full bonding is required.

Apply the adhesive using a notched trowel with the recommended notch (follow the adhesive manufacturer's instructions).

Laying pattern



Arrow The arrow showing the weaving direction is a guideline for placement. This can be found on every ntgrate roll.

Lengths within the same space must always be placed in the same direction.

Bonding

Rolls must be installed using permanent bonding. Please consult our adhesive list to help you choose the right adhesive.

The adhesive is applied to the properly prepared subfloor with a notched trowel.

Gluing is done per length. Always follow the glue manufacturer's instructions carefully. If necessary, use a roller to evenly press the seams of the carpet into the adhesive.

Ntgrate only guarantees COMPATIBLE ADHESIVES approved by Ntgrate:

Please consult our recommended adhesives. You can find the most recent adhesive list on www.ntgrate.eu or scan the QR code at the back of this manual. Always use the type of trowel recommended by the adhesive manufacturer.

Sufficient and efficient dirt mats should be provided before the start of adhesive and floor works. Up to 85% of dirt enters through shoes. Consult with specialist dirt barrier suppliers who can recommend the correct type and custom size for each individual project.

The floors may NOT be loaded until 48 hours (*) after installation, after the adhesive has sufficiently hardened. (* follow the adhesive manufacturer's guidelines, some adhesives require 72 hours)

The first cleaning may only be carried out after 72 hours!

Temperature conditions during and after installation

Underfloor heating

Installation on underfloor heating is possible. However, the temperature during installation may not exceed 27 degrees Celsius. Make sure that the heating circuit is completely watertight.

BEFORE INSTALLATION:

The underfloor heating system must be switched off 48 hours before installation. In addition, for screed floors applied on site, the underfloor heating start-up protocol must have already been completed before preparations for the substrate can begin. Check the residual moisture content (carbide test) according to the type of substrate. (see page 5)

AFTER INSTALLATION:

48 hours after installation of the carpet tiles, the underfloor heating can be slowly heated up by 5°C per day until the standard temperature is reached. Please note, however, that the temperature at the bottom of the rolls is a maximum of 27°C. Avoid temperature peaks in the 7 days after installation.

Floor cooling Dew point + 3 degrees Celsius

Always keep the subfloor temperature at least 3 degrees Celsius above the dew point. Otherwise condensation will occur, which is detrimental to the adhesive and floor covering.

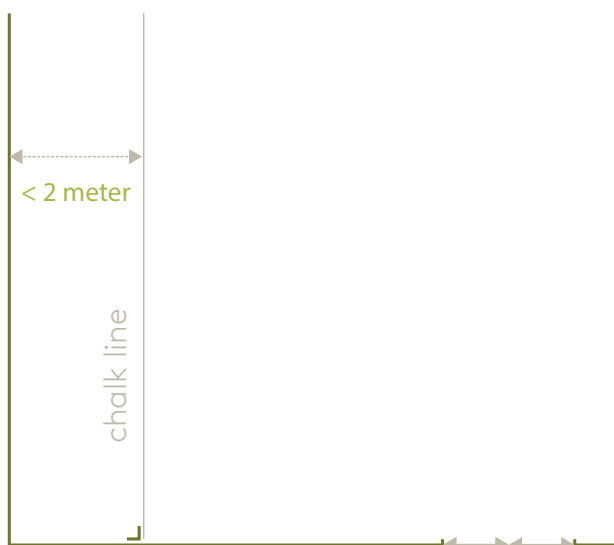
Visual inspection

Installation of the floor covering may not commence until the floor installer has approved and assessed the subfloor and the installation conditions on site. Inspect the rolls under appropriate conditions for any damage, defects, or variations prior to installation. Do not install rolls that show imperfections. Ntgrate accepts no responsibility for the removal and replacement of floor coverings in the event of visible defects prior to installation. Installation implies acceptance of the conditions.

Working method

Installation must be carried out by a professional installer with experience in installing flat woven vinyl floors. Never place lengths directly against the wall, no wall is straight. Always allow a margin for cutting to size against the wall.

Determine the starting point



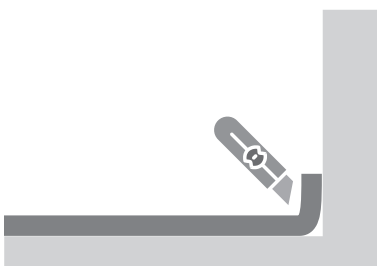
Starting point

Measure the space. Mark the floor with a chalk line(1) running parallel to the base wall. When choosing the spacing, make sure the width is less than 2 meters. When placing the length against the wall, use the extra allowance to trim the roll to size by cutting off the excess. Walls are never 100% straight.

When determining this width, also take the doorway into account. For aesthetic reasons, it is best to avoid positioning a seam directly in front of the doorway.

Also take into account the total width of the room when determining the starting point. The last length to be installed must also be less than 2 meters wide.

Cut the lengths to size along the length of the roll.



A perfect finish

Allow for a few extra centimetres at both ends so you can neatly cut off any excess. This ensures that the floor covering extends all the way up to the wall. No wall is perfectly straight.

! Any white fibres created during cutting will break off spontaneously. If necessary, these can easily be removed with a damp cloth.

Well-fitting and straight-cut seams

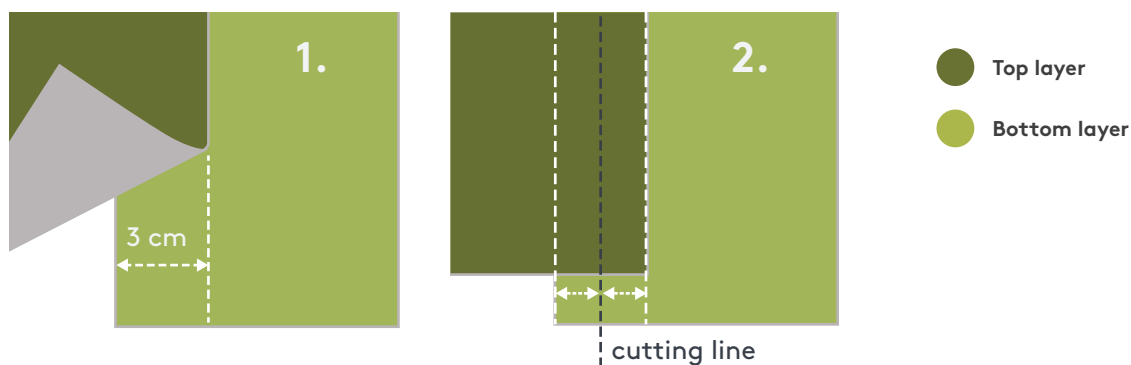
A perfect placement without an open seam

Rolls cannot be placed next to each other like tiles. The edges are **not ready to use** when they come out of production. Two lengths must be placed next to each other but with an overlap of at least 3 centimeters.

1. Ensure an overlap of approximately 3 cm when laying the two strips.
2. Then cut through the top layer in the middle of this overlap using a rail cutter or utility knife, and slightly into the beginning of the bottom layer (approx. 7 mm deep).
3. Remove the cut section of the top strip.
4. Now cut through the remaining underlying strip completely using a hook knife, using the previously made incision as a guide.

Using a carpet hook blade prevents damage to the substrate.

Tip: For perfectly aligned straight seams, we recommend the Wolff rail cutter (anti-slip rail 1.4 meters with the option to extend the rail).



Gluing

Apply the adhesive after cutting the adjacent lengths.

Fold both lengths halfway back and apply the adhesive to the exposed surface. (1)

Apply the adhesive to the exposed section of the subfloor using the correct trowel (taking into account the specifications of the adhesive manufacturer). (2)

Place the lengths you had folded back onto the adhesive. Make sure both lengths align neatly with each other. (3)



A perfect finish

Use a seam roller to flatten the seams and a pressure roller to remove any air trapped beneath the strips.

This ensures good adhesion between our backing and the adhesive. Start from the center of the strip and work at a 45-degree angle toward the edges.

After placement

Shield the floor covering with tetrapack or sheet hardboard if other work is still being carried out in the same room. Do not use self-adhesive protective film. The glue can get stuck between the yarns of the ntgrate top layer. Place heavy furniture on hardboard panels and ensure that there are no temperature peaks in the week after installation. Humidity should be between 30 and 65% (throughout the entire lifespan).

Note: The floor covering may not be used for at least 48 hours* after installation. After the glue has hardened sufficiently. The first cleaning may only be carried out after 72 hours.

***follow the adhesive manufacturer's guidelines, some adhesives require 72 hours.**

Raised floors

Rolls are not suitable for installation on technical floors!
Installation on a raised floor is only possible with tiles.

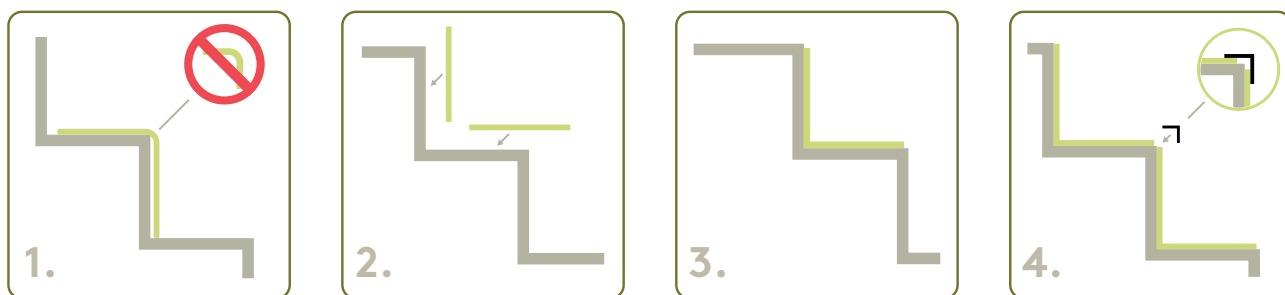
Wooden floors

Ntgrate can also be placed on a wooden surface. The surface must be flat, even, dry and clean. A plywood, chipboard or hardboard must be placed on the wooden base, which is attached to the wooden base every 100 mm. Uneven floorboards or floor sections must be leveled. Placing over hard plates is only possible if there is no height difference. The height differences between the floorboards should be carefully sanded and touched up to reduce the risk of showing through.

Note : The floor covering may not be used for at least 48 hours* after installation. After the glue has hardened sufficiently. The first cleaning may only be carried out after 72 hours.

*follow the adhesive manufacturer's guidelines, some adhesives require 72 hours.

Stairs



Ntgrate is suitable for installation on stairs but not as a runner (1). To install ntgrate on a staircase, pieces for both the treads and risers must be cut to size (2) and permanently glued (3). After installation, stair nosings must be installed (4). On the one hand for a neat finish, on the other hand to protect the edges of the applied covering.

Check the specific subfloor preparation required for stairs and contact your adhesive manufacturer for the selection of the correct permanent adhesive.

Note : The floor covering may not be used for at least 48 hours* after installation. After the glue has hardened sufficiently. The first cleaning may only be carried out after 72 hours.

*follow the adhesive manufacturer's guidelines, some adhesives require 72 hours.

5 | Regulations

National regulations: - Location and installation conditions must always comply with relevant national regulations and installation standards (see Buildwise TV 262). - In the event that the national standard or regulation conflicts with the ntgrate recommendation, the stricter of the two applies.

Prevention also means choosing the right floor covering and design/colour for the right space, for example avoid colours that are too dark or too light for busy areas at the entrance of a commercial building.

Maintenance instructions

Please refer to our maintenance page at www.ntgrate.eu for our current maintenance instructions.

Preventive points of attention when commissioning

Everything installed according to the rules of the art and ready for delivery with the architect and client/tenant?

Please be sure to provide our important "Preventive points of attention when putting into use" to all involved and interested parties so that everyone is aware of, for example, the correct castor wheels (office chairs), compatible and approved furniture leg caps and all general do's and don'ts that are important for correct use and warranty.

Together with the 'ntgrate maintenance recommendations', this forms a crucial component for smooth delivery and a complete as-built file.



download

Warranty

After installation of up to 100 m² a thorough evaluation must be carried out. Do you notice any deviations in relation to the original specifications or you notice a manufacturing error, please contact your ntgrate advisor before proceeding with the installation. This way we can take the necessary steps to bring the project to a successful conclusion. Failure to follow installation guidelines may void the warranty. Ntgrate is not liable for errors resulting from unprofessional installation. The warranty is only valid if the floor covering is correctly installed and maintained.

Please contact your representative/dealer for full warranty terms and conditions.

This document was issued on (see date at the end of this document) and supersedes all previous versions, while simultaneously being superseded when a new version is published. Always check www.ntgrate.eu for the latest version. The original English version is binding.

In the event of any conflict between these installation instructions and local technical standards/legislation, the stricter of the two shall prevail.

NTGRATE BV

ntgrate[®]



Experience Center & headquarters

Evolis 91, 8500 Kortrijk, BELGIUM

+32 56 71 95

info@ntgrate.eu

BTW BE 0833.202.816