



Fact sheet

Bell Bay Wind Farm

Project overview

The Project

Bell Bay Wind Farm (the Project) is approximately 6km north east of George Town and 45km north of Launceston. The Project will host up to 28 wind turbines and have a generating capacity of up to 224MW.

As currently proposed, the Project will have:

- Wind turbines with a capacity of up to 8MW, and tip heights of up to 270m.
- An ~8km transmission line connecting the wind farm to the George Town Substation.
- The provision to construct a Battery Energy Storage System (BESS) facility, if needed.
- Ancillary infrastructure including a substation, workshop, office, and car park.

Planning approval process

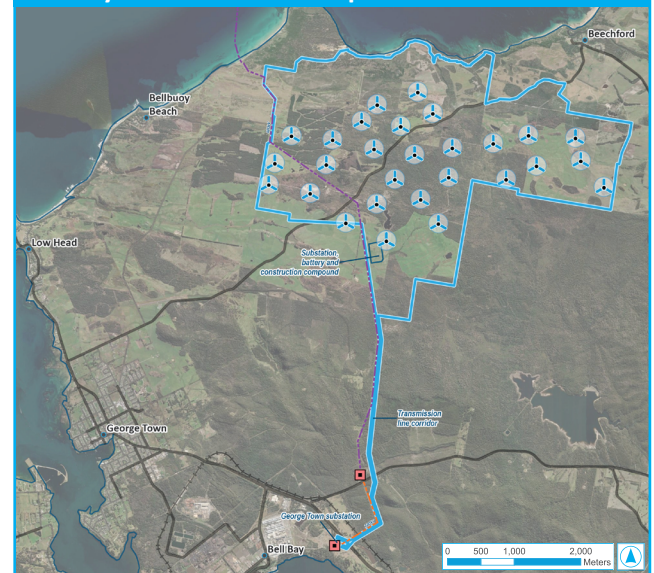
We are seeking an approval for the Project under the Major Projects pathway in accordance with the *Land Use Planning and Approvals Act 1993* (TAS). We will provide more detail on the approval pathway and how you can engage with the process as we progress with our proposal.






A range of specialist studies will inform the Major Projects application. These studies will provide a comprehensive assessment of the social, environmental, and economic impacts of the Project.

Project location

The Project is located at Soldier Settlement Road George Town. The site is situated within the proposed North East Tasmanian Renewable Energy Zone (REZ) and is close to the Bell Bay Advanced Manufacturing Hub.

Bell Bay Wind Farm - Concept Plan



-  Proposed wind turbine generator - not to scale
-  Existing electricity substation
-  Project extent
-  Existing 220KV transmission line
-  Basslink

Project footprint

The Project covers an area of approximately 2780ha and we anticipate less than 5% of the land will be used for the infrastructure itself. Much of the Project area is farmland and mainly used for grazing.

Benefits our wind farm may offer

It is our expectation that the Project will provide Tasmania with affordable, clean, and reliable electricity to meet its future energy needs and create economic, social, and environmental benefits, including by:

- Powering up to 104,000 Tasmanian homes with clean energy.
- Creating up to 192 direct jobs, comprising of 180 construction jobs and 12 operational jobs.
- Providing clean energy to new and existing industry in the local area and around the state.
- Funding local community benefit programs.
- Increasing supply of clean energy and putting downward pressure on electricity prices.
- Supporting Tasmania in achieving its renewable energy targets of 150% by 2030 and 200% by 2040.



Powers up to
104,000 TAS homes



Supports renewable
energy targets



Creates up to **192**
direct **JOBS**



Generates up to
224MW of energy

Project status

We are currently in the early stages of the Project development and anticipate starting construction in 2027, and operations in 2029. The estimated timeline for the Project's lifecycle includes the following key phases:



Provide feedback

Email AUProjects@equis.com
or phone 1800 161 249.

To learn more about our projects you can:

- Visit our [website](#).
- Register at [engagement hub](#) to follow our project.
- Attend a project information session.

On our engagement hub you can register as supplier, provide feedback and register your interest for community benefits.

We publish project information on our engagement hub and website, including upcoming information sessions, project updates, newsletters, and fact sheets.

For more information



Call toll free on 1800 161 249



Visit www.equis.com.au



Email AUProjects@equis.com



Follow www.linkedin.com/company/equisdev



Register equis.engagementhub.com.au