







URBAN CONTEXT

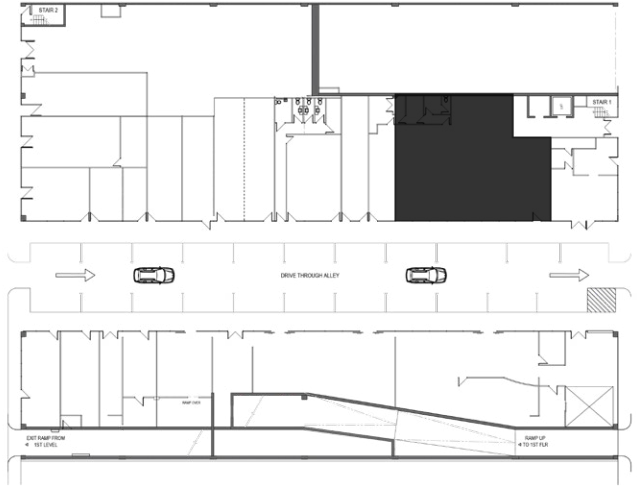
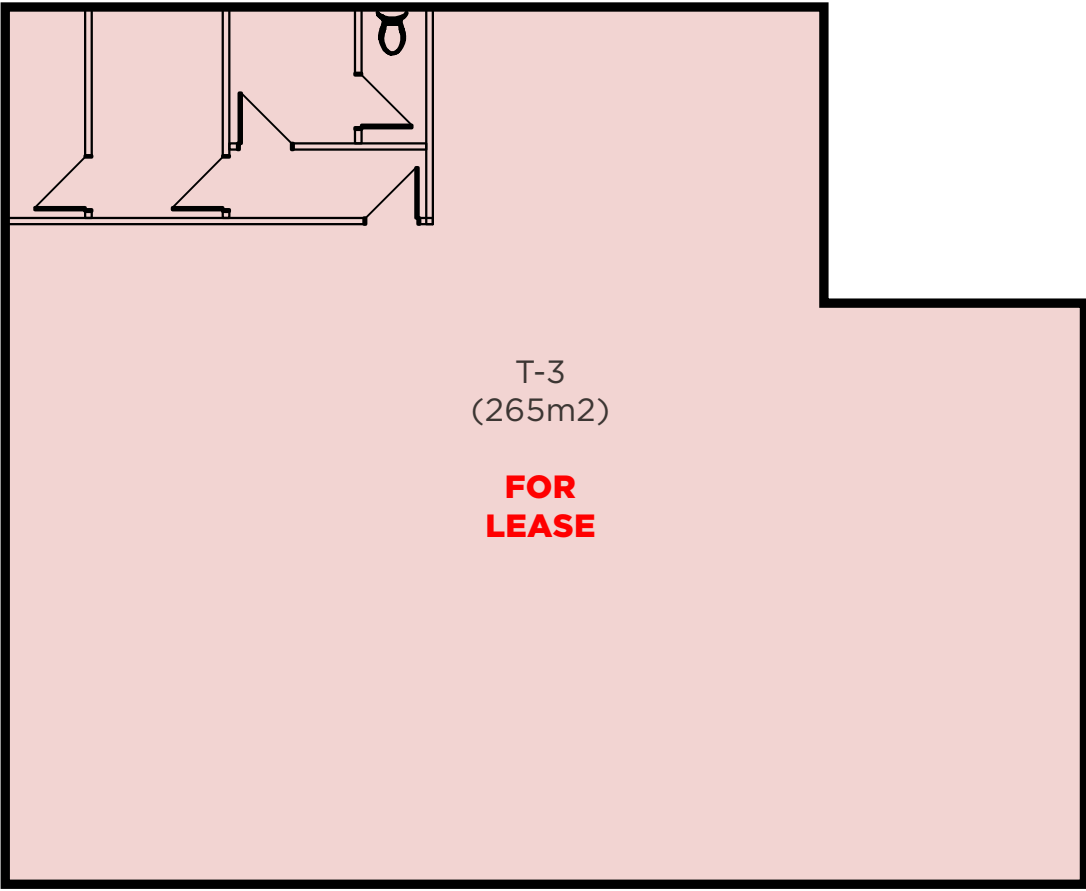
- | | | |
|---------------------------------|--------------------------------|------------------------------|
| 1 Osborne St | 5 Auckland Domain | 9 Event Cinemas/Olympic Pool |
| 2 277 Westfield | 6 Auckland War Memorial/Museum | 10 Symonds St |
| 3 SH1 On/Off Ramp (Gillies Ave) | 7 Khyber Pass | 11 SH1 Southern Motorway |
| 4 Broadway | 8 Carlton Gore Rd | 12 Newmarket Train Station |





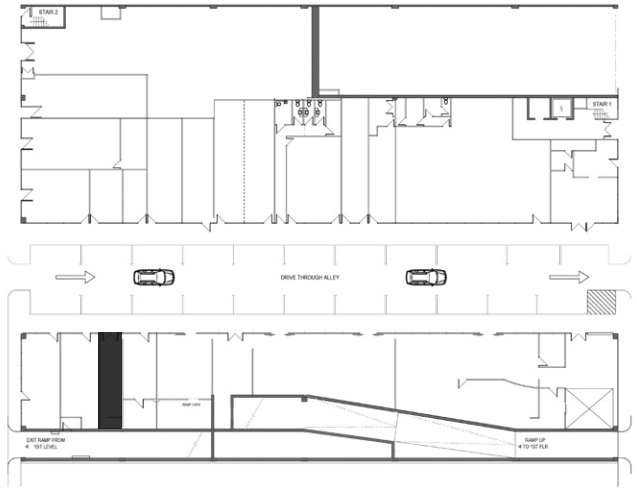
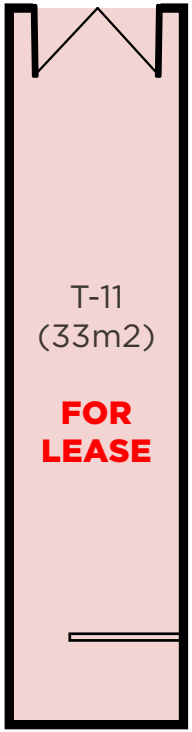
FOR LEASE





FOR LEASE



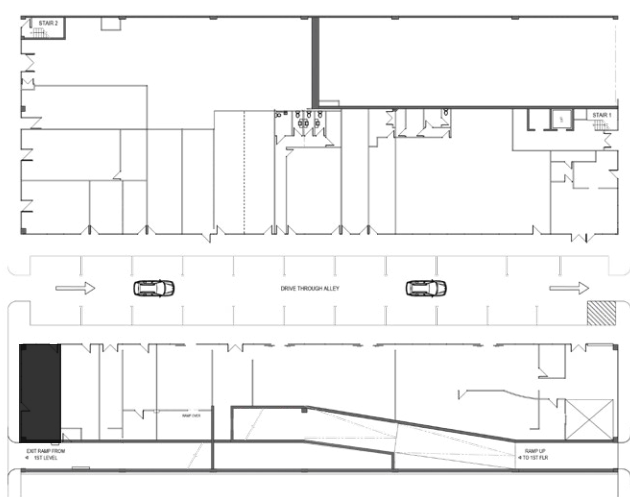


FOR LEASE



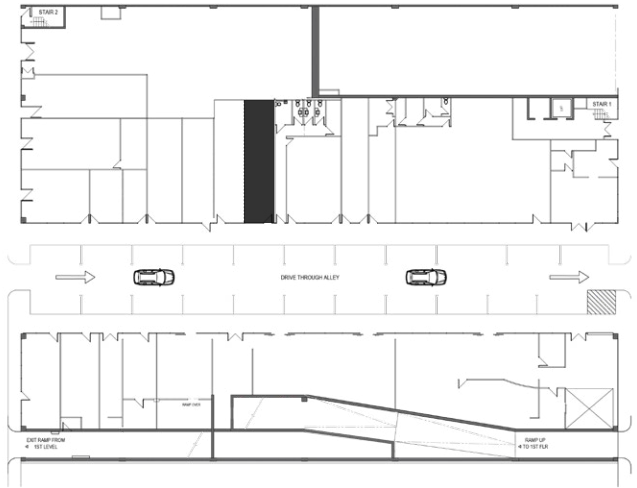
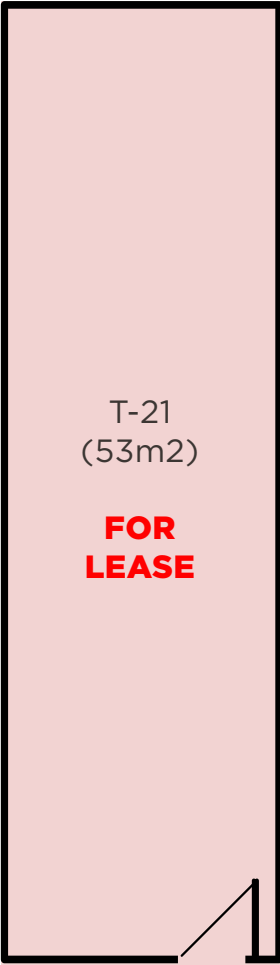
T-13
(48m2)

FOR
LEASE

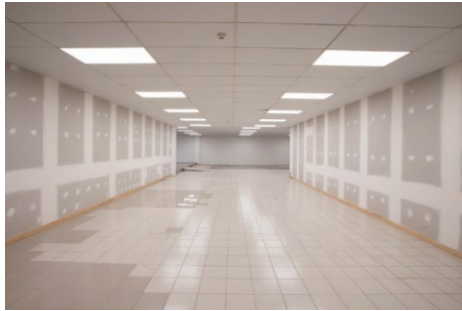


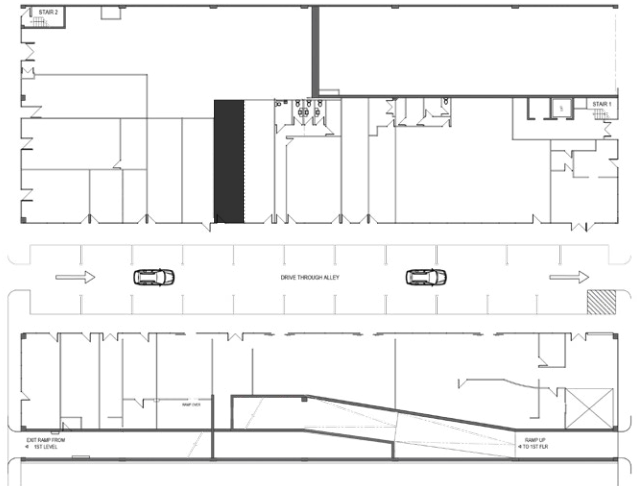
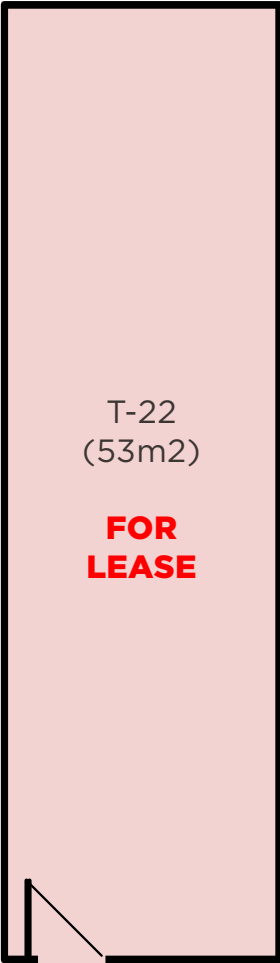
FOR LEASE





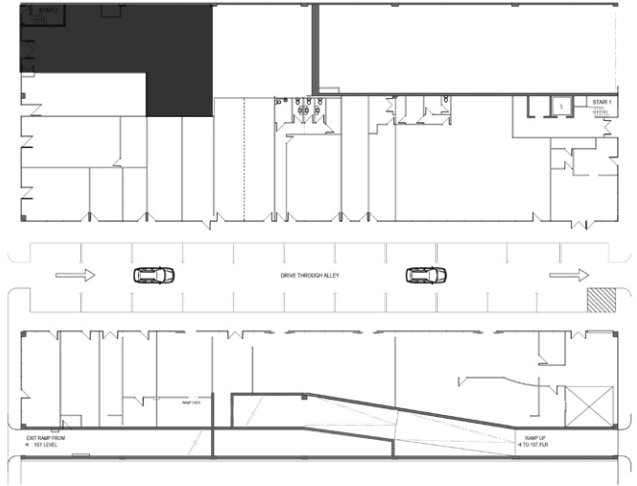
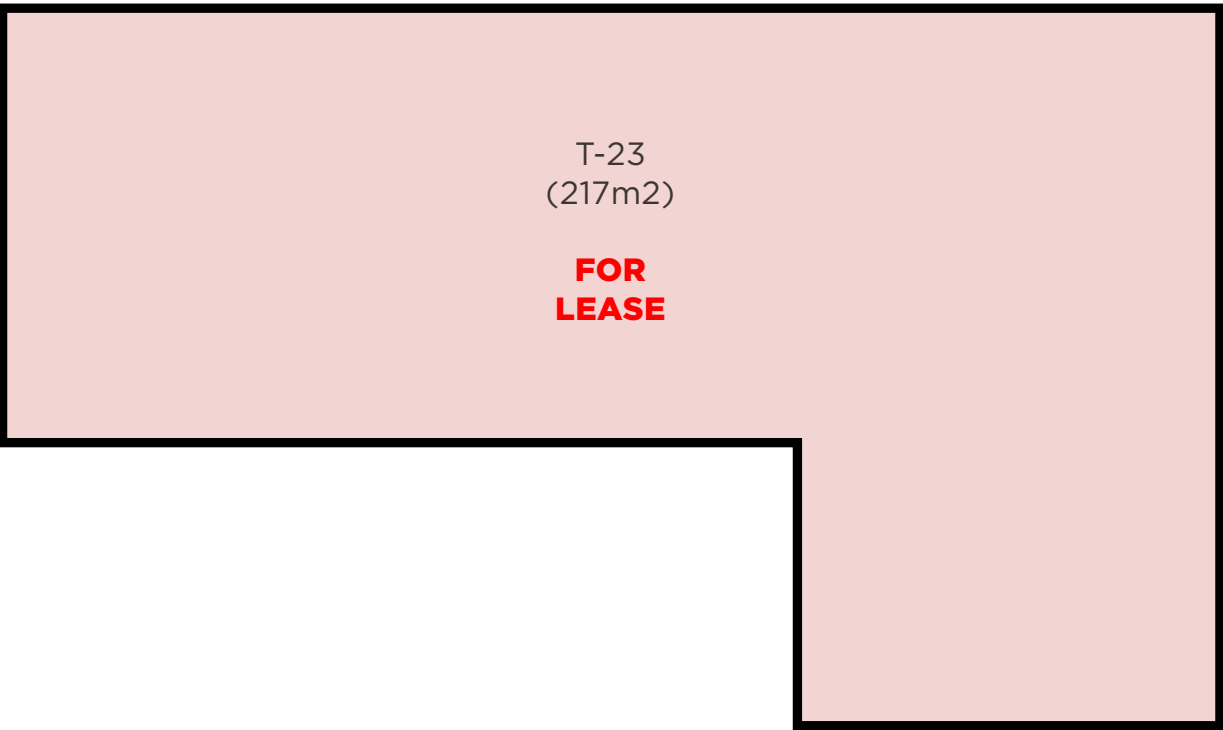
FOR LEASE





FOR LEASE

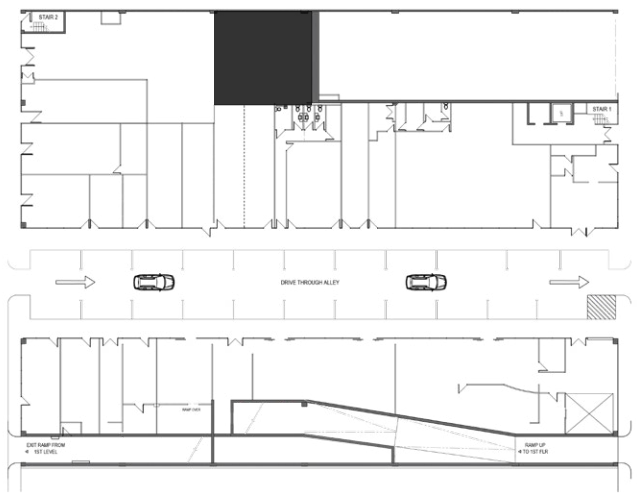




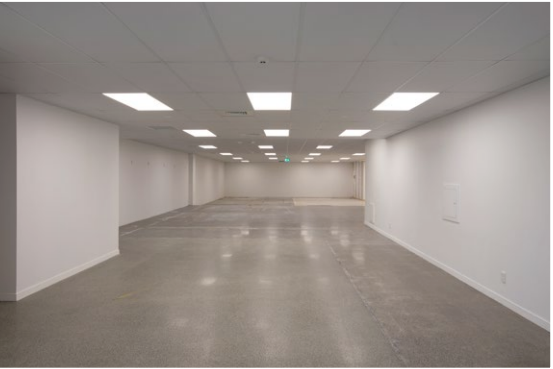
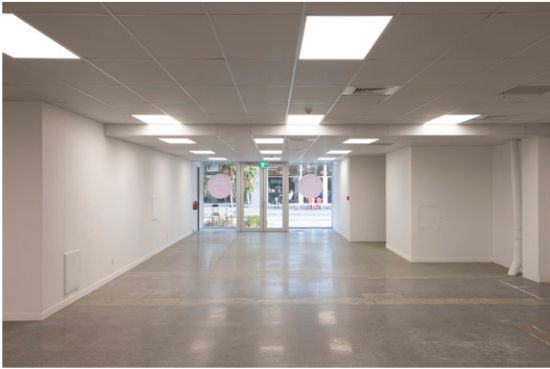
FOR LEASE



T-23a
(100m2)
**FOR
LEASE**



FOR LEASE



P R E M I S E S A V A I L A B L E

TENANCIES	TYPE	RENT PER ANNUM*	m2	AVAILABLE
T.3	Retail	\$120,000	265	Now
T.11	Retail	\$40,000	35	TBC
T.13	Retail	\$52,000	48	Now
T.21	Retail	\$45,000	53	Now
T.22	Retail	\$45,000	53	Now
T.23	Retail	\$82,400	217	Now
T.23a	Retail	\$25,000	100	Now

Unreserved Carparks: \$45/week +GST | Reserved Carparks: \$75/week +GST

* Pricing excludes GST and Outgoings. Outgoings are approximately \$167/m².