

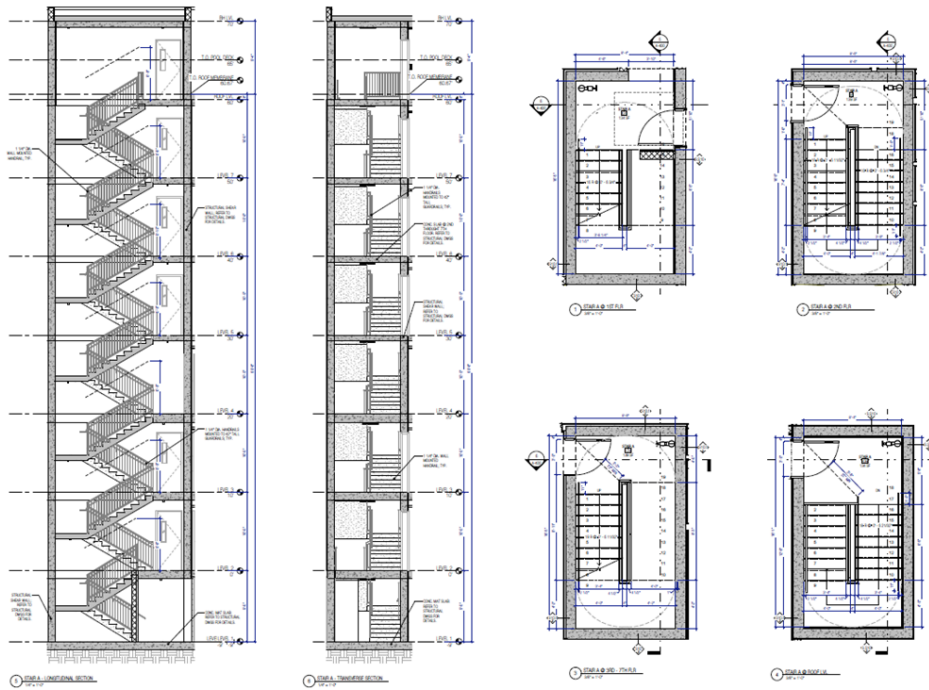
Architectural BIM Services for a Large-Scale Development

(Architectural Modeling & Documentation, BIM & VDC Coordination Services)

CASE STUDY



TECHTURE



Client : Architect

Team Size : 3 Nos. (BIM Architects & BIM Coordinator)

Disciplines : Architecture

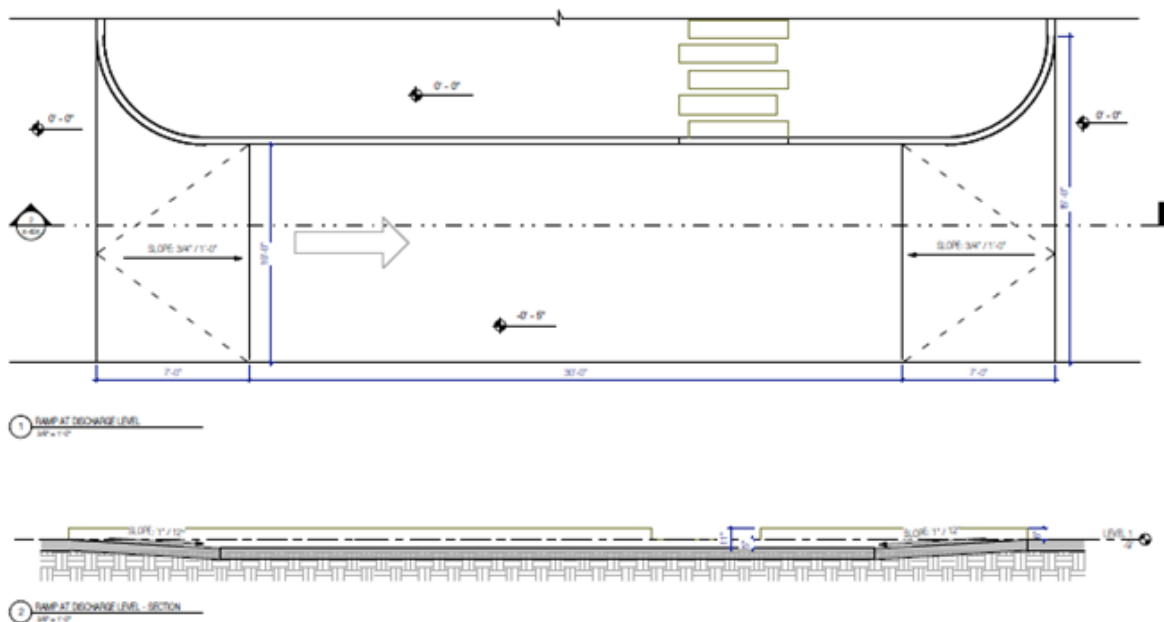
Duration : 3 Months

Scale : 74,000 Sq. Ft.

Software : Autodesk Revit & Autodesk Naviswork

Type : Residential+Commercial

Location : New York, USA



Project Overview

The project involved the development of an LOD 300 architectural BIM model and detailed construction documentation for a large-scale mixed-use development with an approximate built-up area of 74,000+ sq.ft. The objective was to convert early-stage design inputs into a coordinated and standardized BIM model and drawing set to support design development and construction requirements. The scope covered interior spaces, public areas, and typical details, ensuring consistency with established project standards while adhering to defined timelines.

Scope & Deliverables

- ❏ Development of architectural BIM models from Concept Design through Schematic Design (SD) and Design Development (DD) stages
- ❏ Progressive refinement of models to LOD 300, incorporating spatial layouts, key architectural elements, and design intent
- ❏ Preparation of coordinated interior elevations, floor finish plans, reflected ceiling plans, and typical architectural details at DD stage
- ❏ Extraction of structured and standardized 2D drawing sets to support downstream coordination and construction documentation

Challenges

- ❏ Translating evolving concept-level design inputs into coordinated SD and DD BIM models
- ❏ Managing frequent design refinements while maintaining model integrity and drawing consistency
- ❏ Ensuring alignment between design intent, modeling standards, and documentation requirements across phases
- ❏ Controlling scope and iterations within defined design-stage boundaries

