



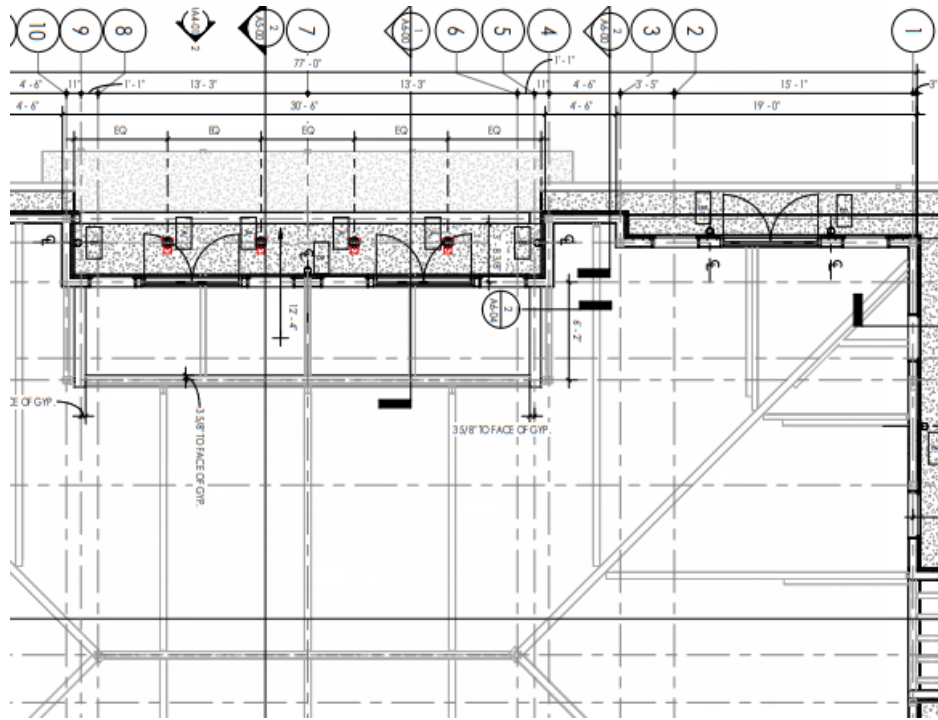
LOD 300 Architectural BIM Modeling & CD Documentation for Office Buildings

(Architectural Modeling, Construction Documentation, and BIM & VDC Coordination Services)

CASE STUDY



TECHTURE



Client : Design Consultant

Team Size : 3 No.s (BIM Engineer & BIM Coordinator)

Disciplines : Architecture

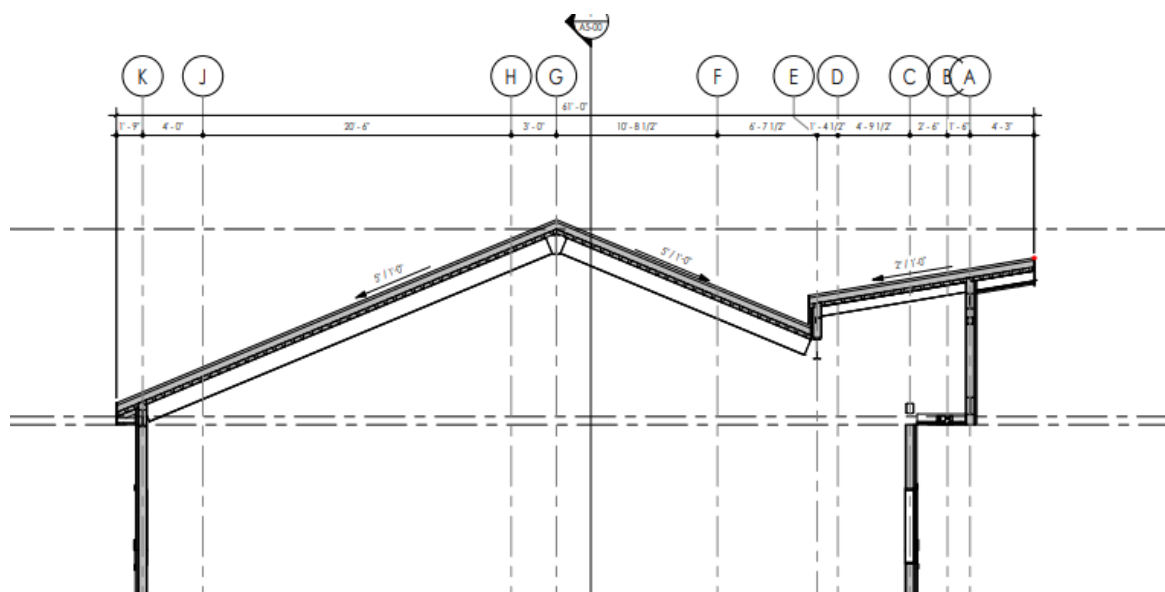
Duration : 1 Month

Scale : 13,200 Sq. Ft.

Software : Autodesk Revit

Type : Commercial

Location : Texas, USA



Project Overview

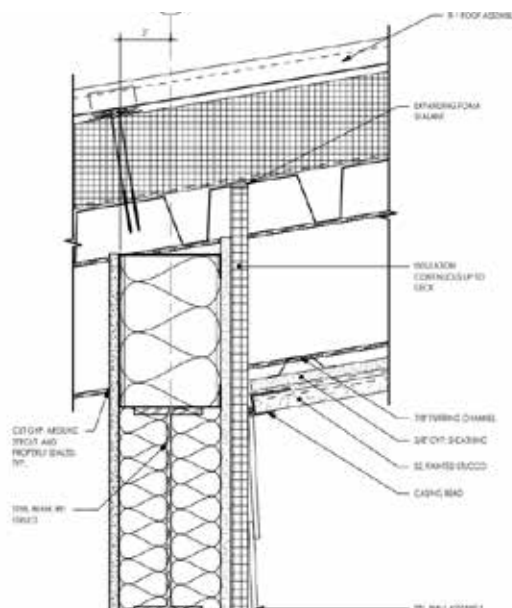
Techture delivered LOD 300 Architectural BIM modeling and CD documentation updates for a 13,200 Sq. Ft. office building project. The scope focused on revising the existing construction document set to reflect the transition from steel to wood framing systems. Updates were implemented within the live Revit model, ensuring consistency between model and drawings. The outcome enabled accurate documentation aligned with revised structural inputs.

Scope & Deliverables





- Update LOD 300 architectural model to reflect wood framing wall assemblies.
- Revise CD drawing set including plans, RCPs, elevations, sections, and details.
- incorporate updated wall types and assembly details into model and drawings.
- Maintain existing façade and roof design with no scope changes.
- Deliver 12–15 sheets per building for all three buildings.

Challenges




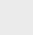
- Coordinating architectural updates with structural framing changes.
- Maintaining consistency across model and multi-sheet CD sets.
- Managing repetitive documentation for multiple buildings.



Techture Approach

-  Updated wall assemblies directly within the existing Revit model.
-  Ensured synchronization between model changes and CD documentation.
-  Standardized sheet production for multi-building consistency.
-  Communicated proactively for input gaps and clarifications.

Benefits

-  Accurate CD set aligned with revised structural system.
-  Improved coordination between architecture and structure.
-  Consistent documentation across multiple buildings.
-  Reduced rework through controlled BIM-based updates.

