



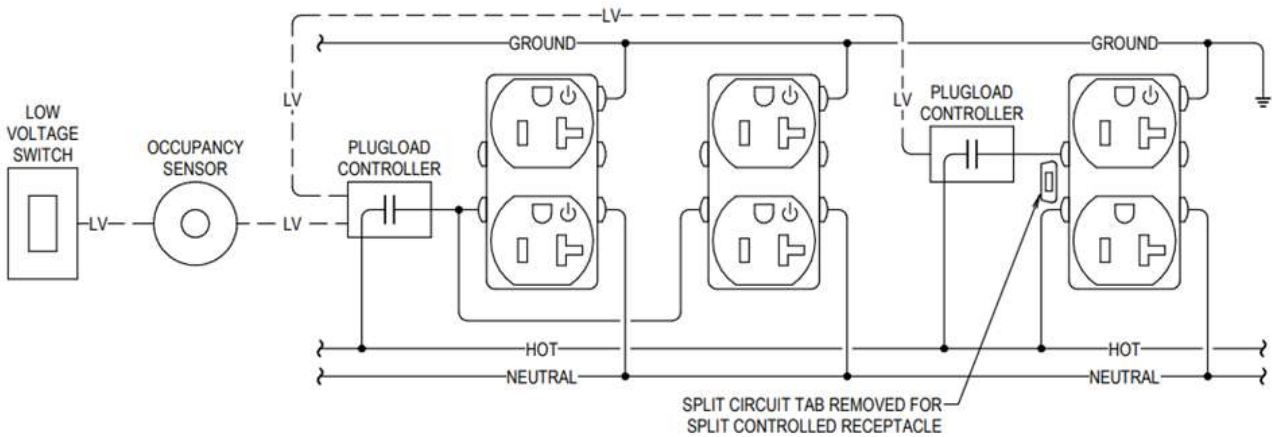
LOD 350 Electrical BIM Modeling, Coordination & Shop Drawing Development for Educational Facility

(Electrical BIM Modeling & Shop Drawings, BIM & VDC Coordination Services)

CASE STUDY



TECHTURE



Client : MEP Contractor

Team Size : 3 No.s (BIM Engineer & BIM Coordinator)

Disciplines : Electrical

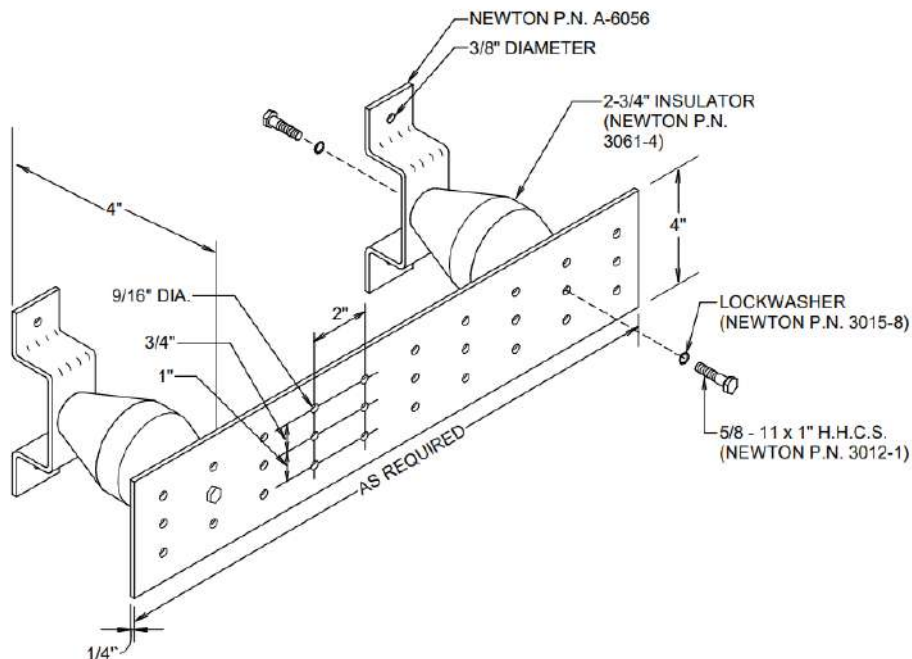
Duration : 2 Month

Scale : 178,993 Sq. Ft.

Software : Autodesk Revit & Navisworks

Type : Educational

Location : Texas, USA



Project Overview

Techture delivered LOD 350 Electrical BIM modeling, coordination, and shop drawing development for a 178,993 Sq. Ft. educational facility. The scope focused on creating a detailed electrical model based on design drawings and coordinating it with other disciplines. Using Autodesk Revit and Navisworks, the team ensured a clash-free model aligned with project requirements. The final output included coordinated models and 28–30 reference shop drawings for construction.

Scope & Deliverables

- 📦 Develop LOD 350 electrical BIM model from design drawings using architectural reference model.
- 📦 Model electrical systems including panels, conduits, cable trays, lighting, and power equipment.
- 📦 Perform multi-disciplinary clash coordination with Arch, Str & MEP models.
- 📦 Update model based on RFI responses and coordination meeting inputs.
- 📦 Generate 28–30 electrical reference shop drawings for execution.

Challenges

- 📦 Coordinating electrical systems within large-scale educational facility layout.
- 📦 Managing accuracy across dense conduit and cable tray networks.
- 📦 Ensuring clash resolution with multiple discipline models.

