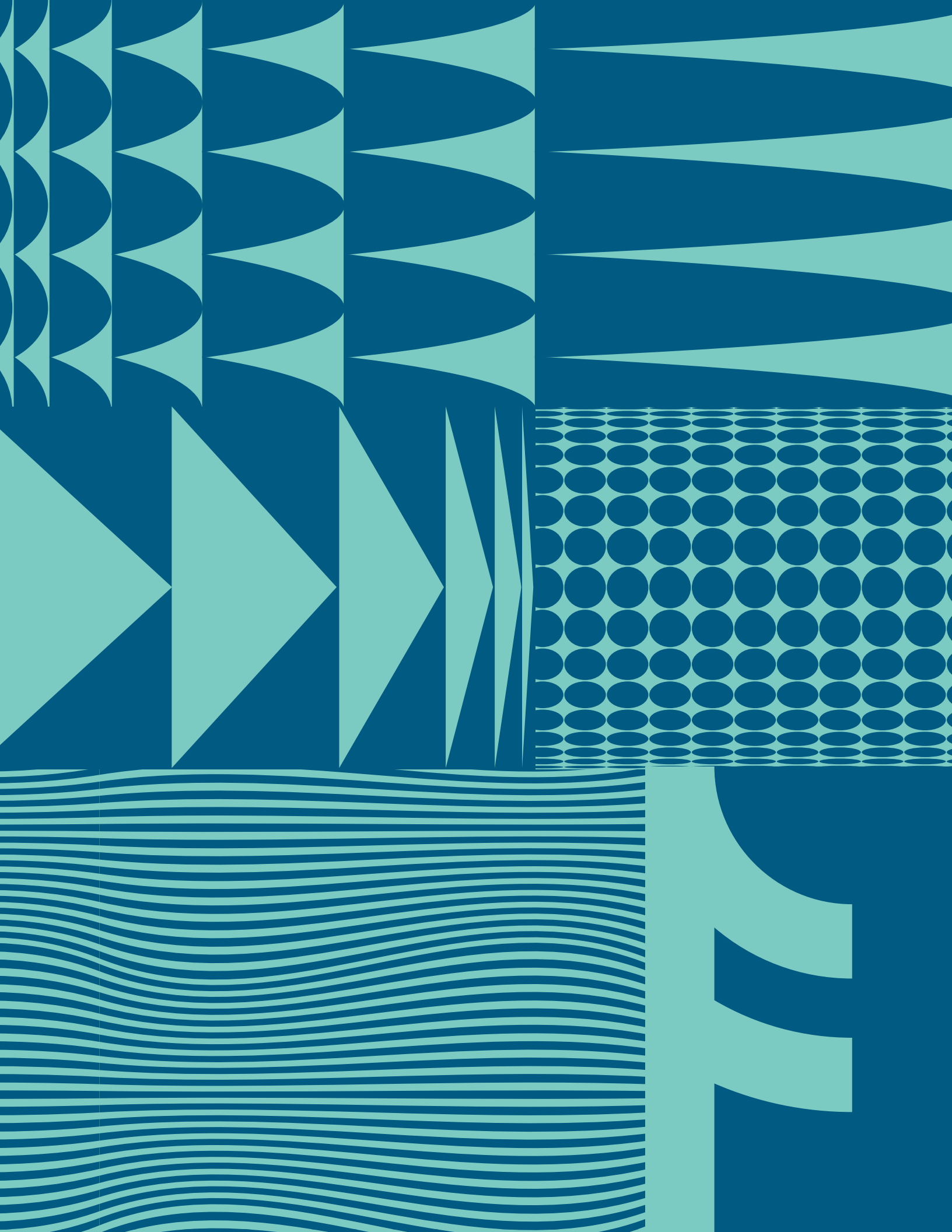




New England Treatment Access



Patient Handbook



INDEX

PART 1: ACCESS

Benefits Of Being A Patient 6

Becoming A Patient 8

Visiting NETA 13

PART 2: TREATMENT

Introduction To Cannabis 19

Product Education 22

Dosing Guide 26

PART 3: SAFETY

Safety & Responsibility 32

Forms 34

Please Consume Responsibly. This product may cause impairment and may be habit forming. For use only by adults 21 years of age or older or persons holding a patient registration card. Keep out of the reach of children. This product has not been analyzed or approved by the Food and Drug Administration (FDA). There is limited information on the side effects of using this product, and there may be associated health risks. Marijuana use during pregnancy and breast-feeding may pose potential harms. It is against the law to drive or operate machinery when under the influence of this product. KEEP THIS PRODUCT AWAY FROM CHILDREN. There may be health risks associated with consumption of this product. Marijuana can impair concentration, coordination, and judgment. The impairment effects of edible marijuana may be delayed by two hours or more. In case of accidental ingestion, contact poison control hotline 1-800-222-1222 or 9-1-1. This product may be illegal outside of MA.



Our goal is to bring wellness to the people of Massachusetts and beyond by providing lab-tested, cutting-edge cannabis therapies in an inviting, safe environment.

We are dedicated to providing you with an unparalleled experience in medical marijuana care. We are committed to offering only the highest quality, lab-tested medical marijuana therapies, along with useful information to assist in your treatment regimen. We're here for you.



The background is a collage of abstract geometric patterns. The top left features a repeating pattern of downward-pointing scalloped shapes. The top right has a series of horizontal wavy lines. The middle left shows a pattern of upward-pointing, elongated teardrop shapes. The bottom left contains a complex arrangement of overlapping triangles and polygons. The bottom right is filled with a dense grid of small circles.

Part One: Access



The
Benefits
Of Being A
Patient
At NETA

New Patient Savings

Take 15% off your first order
as a medical patient!*

Earn \$100 in coupons when you sign up
for medical Loyalty Rewards.*

*Stackable on daily deals and promotions. Valid on in-house
brands only. Product exclusions and purchase limits may apply.

Lower Prices (No 20% tax!)

Wider Range of Edible Dosing

Expanded Purchase Limits

Greater Product Variety

Find out more at netacare.org/become-a-patient

NETA Services

Staff & Resources

We encourage you to ask plenty of questions and interact with our staff when you visit a NETA dispensary. Our Patient Service Associates (PSAs) are heavily trained and extremely knowledgeable about medical marijuana. We welcome any questions you may have and will be happy to guide you toward additional resources for independent research.

We always appreciate your feedback, so please don't hesitate to reach out to a member of our staff, or email us at: contact@netacare.org

Patient Consultations

While drop-in visits and on-the spot discussions with a NETA staff member are most common, we're happy to accommodate longer one-on-one discussions.

Translation & Interpretation Services

We're committed to serving you...in any language. If one of our staff members doesn't speak your language, we'll utilize a multilingual telephone translation service to ensure effective communication. Deaf/hard of hearing translation services are available, as well as accommodations for the blind/visually impaired.

Veterans Discount

U.S. military veterans can benefit from a 15% discount on all cannabis purchases. Family members receive 10% off all cannabis purchases.

NETA Programs

Financial Hardship Program

NETA will offer a financial hardship discount to any registered patient with verification that he/she is a recipient of MassHealth, SSI benefits, or whose income does not exceed 300% of the federal poverty level, adjusted for family size. Please speak with a staff member at your preferred NETA location for more information or to apply.

Becoming And Staying A Patient

We offer great savings for both new patients and renewals. As a new patient you receive 15% off* your first order and \$100 in vouchers* when you join our loyalty program.

As a renewing patient, you will receive one \$50 voucher to be used at any NETA location. Just come on in and talk to a Guide to receive this amazing benefit!

*Stackable on daily deals and promotions. Valid on in-house brands only. Product exclusions and purchase limits may apply.

Medical Loyalty Rewards Program

Get 1 point for every dollar you spend and at 500 points, you will receive \$20 to spend on your next purchase. You can STACK this discount with everyday promotions to get even more savings!

Must shop as a medical patient to accumulate points

Becoming A Patient At NETA

To get ready for your first visit to a NETA dispensary, there are a few steps you need to take:

1 **Receive Doctor Or Nurse Practitioner's Certification**
netacare.org/new-patients

2 **Register With The State**
masscannabiscontrol.com/for-new-patients

3 **Visit A NETA Dispensary**
netacare.org/dispensary-locations



LOOKING FOR A DOCTOR?

Visit netacare.org/physician-locator for a full updated list and detailed information.

1. Receive Doctor's Certification

If you think medical marijuana might be helpful in improving your quality of life, the first step is to get certified by a qualified physician.

Seeing a Doctor

Your family doctor or nurse practitioner is a good place to start. Be straightforward. Explain why you feel medical marijuana can be helpful and ask if he/she is willing to certify you. It should be no different than discussing other potential treatment options with them.

If he/she can't certify you, you can search the internet for "MA Medical Marijuana Doctors" to find doctors or nurse practitioners that specialize in and understand medical marijuana treatments.

Your Visit

Your doctor or nurse practitioner's office will let you know what to bring to your first visit. Most likely, you'll need to send or bring your relevant medical records. You will have time to ask questions about medical marijuana and how it can best work for you. Your doctor or nurse practitioner will decide whether or not to certify you, and for how long. A certification allows you to move to the next step.

What's Next?

Now that you have been certified, you will need to register with the state's Medical Use of Marijuana Online System. Your doctor or nurse practitioner's office will initiate the registration process. You will automatically receive an email from the Massachusetts Cannabis Control Commission (CCC) with your PIN to login and instructions on how to register once your doctor or nurse practitioner has processed your certification. Also, check out NETA's Patient Registration Guide for step-by-step registration instructions.

Initial Access Program

As of July 2019, new patients can take part in an Initial Access Program. After visiting your doctor for your certifying appointment, you will be issued a temporary certification while your registration is being processed. The temporary certification is valid for 14 days and allows a patient to visit the dispensary the same day as their appointment. Initial access limits do apply, be sure to check the CCC website for most current information on purchase limits during the 14-day period.

Cost

- A. An initial visit with a medical marijuana specialist can cost between \$150 and \$300 and is not usually covered by insurance. This may be lower if you can prove a financial hardship, if you are a veteran or if you have a disability. Make sure to ask if you can apply for any discounts.
- B. Your certification can last up to 1 year, but you may be certified for a shorter time period. It's wise to make a follow up appointment about 2 months before your certification expires. Follow up appointments usually cost between \$50 and \$150.

2. Register With The State

After you've been certified to use medical marijuana, your doctor will give you an Initial Access Certification card, immediately granting you access to NETA. After 14 days, in order to make medical purchases, you must register as a patient online to receive a program ID card. This guide can help you get through that process painlessly. Set aside about a half hour to complete the state registration process online.

Program ID Card



Registration PIN

The certification that you received from your doctor prompts the MA Cannabis Control Commission (CCC) to send you an email with detailed instructions on how to register with the Medical Use of Marijuana Program. That email contains a PIN, which you'll need to register.

Online registration is an easier and **MUCH** faster process, but a paper registration process is an option. Call CCC at

617-660-5370

to request the paper form.

Before You Start You Will Need:

- Internet access
- The email you received from the CCC with your PIN number
- Access to a scanner or a mobile phone/device capable of uploading documents
- Photo Identification (see table below)
- Proof of Residency (Only if you're not using a MA ID with current address)
- A photograph of yourself (or you might be able to automatically upload your MA license pic- a nice time saver)
- Optional - Proof of verified financial hardship

Acceptable Photo ID:

- ▶ MA State Driver's License with current address
- ▶ MA State ID with current address & photo
- ▶ U.S. Military ID *
- ▶ U.S. Passport *

* Requires additional proof of residency.

Acceptable Proof of Residency: (current and containing name and address)

- Utility bill
- Tuition bill
- Vehicle registration
- Car insurance policy
- Certified marriage certificate from the past 6 months
- Mortgage or lease
- Property tax or Excise bill from the current year
- First class mail from less than 60 days from any federal or state agency
- Current MA issued professional license

Verified Financial Hardship Fee Waiver

1. Official MassHealth card
2. Social Security Income Benefit Verification Letter
3. W2 proving your household income is 300% of federal poverty level or a SNAP statement from the current year.

IMPORTANT!

Patients must maintain an active certification with their doctor and an active registration with the state of MA to be able to use the MMJ system.

SCAN AND SAVE

Scan (or photograph) all the necessary documents and save them to your computer in .jpg or .pdf format, no larger than 2MB, to access later in the process.

**JPG
2MB**

Photograph of Yourself

If you're using a MA drivers license or photo ID, your photo will be taken automatically from that document. In this case, there is no need to take and upload a photo of yourself.

If you're using a military ID or US Passport, you need to take a photo to be uploaded. It must be a square color photo of your head and shoulders without smiling on a white/off-white background. If you wear glasses make sure to remove them and look into the camera. The photo must be in .jpg format and sized to 400 pixels wide by 360 pixels long and a maximum of 2 MB. If you're having trouble, you can have a passport photo taken at your local post office or a pharmacy.

Registering with the Online System

By now you have received the CCC email that outlines 15 steps to register. Scroll down the email until you see "Registration Process". It may initially seem very long and complicated, but if you follow the steps closely you can complete registration in 30 minutes or less.

Key things you'll do to register:

1. Upload all necessary documentation to your computer
2. Register with Mass CIP - the state system that houses the MMJ online system
3. Register with the MMJ online system
4. Review & submit your application
5. Print temporary paper program ID card (Use this until your official card arrives!)

Claim Your Account on Mass CIP

You can use the same login you used for Virtual Gateway. But you must claim your account on Mass CIP starting January 27th.

- Claim VG account on Mass CIP: masscannabiscontrol.com/for-new-patients
- Click "Claim Account" link at the bottom
- Enter info and read/accept terms and conditions
- If all fields match, an email is sent to you with a link to reset a new password
- Open the email and click the link
- Enter and confirm your new password. Password must have: 12 characters, 1 upper case, 1 lower case, 1 number, and 1 special character
- See the note that says your account has been successfully claimed
- Go to CCC website, log in, done!

Changes To Your Personal Information

With any changes to your name, address or any other contact information you'll need to log in and update your profile in the MMJ Online System. You'll also need to make sure the information on your photo ID matches your registration information. So, for example, if you change your address, update your information in the MMJ Online System and also **update your ID right away!**

Personal Caregiver

If it will be difficult for you to access the dispensary yourself, you may designate a caregiver to purchase your medicine for you. In the Mass CIP select "My Caregivers", click

"Generate Pin" and input the email of the person you are selecting. They will then need to log into the website and register as your caregiver.

Annual Renewal

You will need to renew your patient registration annually with the state. You may begin re-registration as early as 60 days before the expiration.

Getting Your Card

You will be able to print your temporary paper program ID card from your Mass CIP account. This card is valid for 4 weeks. The CCC will mail a laminated card at a later date.

Important Tips:

1. **The MMJ Online System TIMES OUT after 30 minutes of inactivity.**
2. **You must carry your program ID card at all times while in possession of medical marijuana**
3. **Take note of your doctor's certification date. It's different than your annual registration with the state, and needs to be active in order to visit a dispensary.**

What if I lose my card?

Notify the Medical Use of Marijuana Program within 5 business days after discovering it's missing.

(617) 660-5370

There's a \$10 fee to replace your card.

3. Visting a NETA dispensary

Now that you've been certified, have registered with the state and received your program ID card, you can visit NETA and purchase your medicine. Remember to bring:

- Your program ID card
- A valid and current government issued photo ID



NETA FRANKLIN

**162 Grove Street
Franklin, MA 02038**

Right off of 495

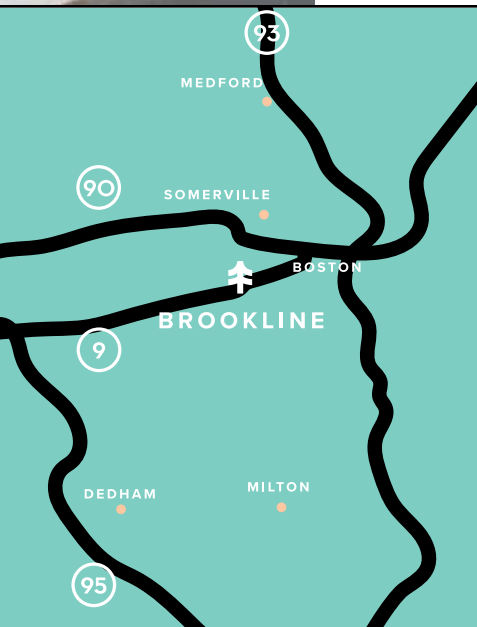
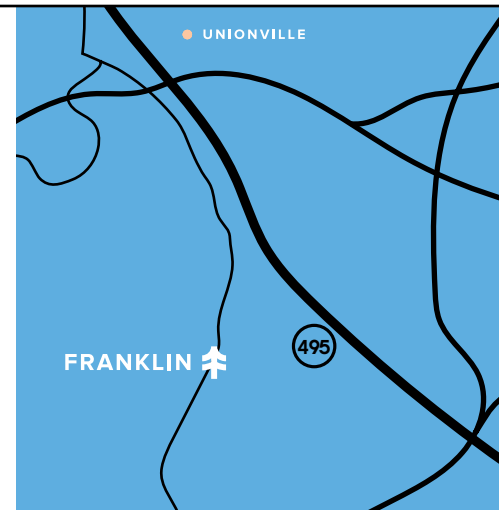
Hours

Monday — Saturday

8:00am - 9:00pm

Sunday

9:00am - 9:00pm



NETA BROOKLINE

**160 Washington Street
Brookline, MA 02445**

At the intersection of
Route 9 and Washington St.
Brookline Village

"T" accessible:
Green Line "D" Branch,
Brookline Village stop

Subject to extension under local law.

Medical Hours

Monday — Friday

10:00am - 9:00pm

Saturday — Sunday

9:00am - 9:00pm

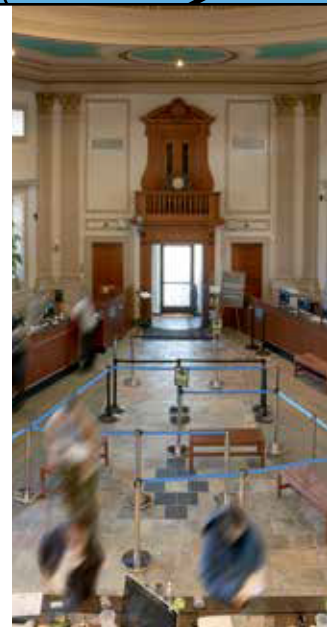
Recreational Hours

Monday — Saturday

10:00am - 9:00pm

Sunday

12:00pm - 7:00pm



NETA NORTHAMPTON

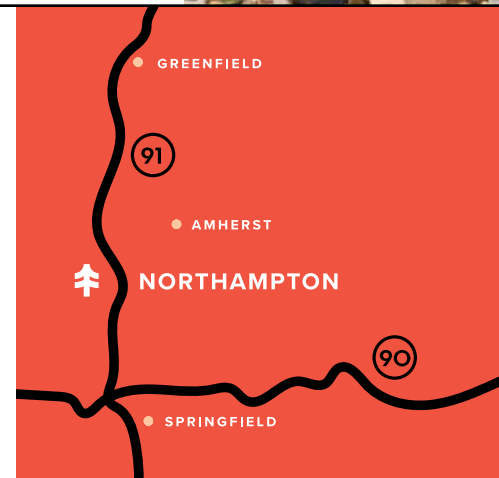
**118 Conz Street
Northampton, MA 01060**

Just off Route 91

Open Daily

8:00am - 9:00pm

Public transport available via
Pioneer Valley Transit Authority
(PVTa) bus routes



NETA Delivers! Weed love to come by.™

Medical delivery Monday – Saturday.

No delivery fee for orders over \$100 | Orders between \$50-\$99, there is a \$5 fee. Orders below \$50 are subject to a \$20 fee.

NETA delivers to Greater Boston, Franklin and Western MA.

For more information, contact us at: **contact@netacare.org**

Contact us!

We have a dedicated Customer Care Team that is available for YOU.

Access our online chat via our website, **netacare.org**

Call us: 617-377-7408

Email us: **contact@netacare.org**



Maintaining Patient Status

Know Your Expiration Dates



1. Doctor's Certification

Your doctor or nurse practitioner can certify you to use medical marijuana for any amount of time between 15 days and one year. Don't let your certification expire. You'll want to make an appointment with your certifying doctor about 2 months before your expiration date.

Your certification can last up to 1 year, but you may be certified for a shorter time period. It's wise to make a follow up appointment about close to the date that your certification expires. Be sure to call your doctor or nurse practitioner at least a month or two in advance to schedule the appointment.



2. State Registration

Your registration in the state's Medical Use of Marijuana Program expires annually, regardless of your certification date. You may re-apply for registration, on an annual basis, up to 60 days before the date that your registration expires using the state's MMJ online system.

NOTE: If there is any change to the information you submitted for registration (i.e. name, email, address, or phone number), you must update this information within 5 business days after the date of this change.



3. Patient ID Card

Check the expiration date on your patient ID card once you receive it. The card itself may have a separate expiration date from your actual registration. Renew your card before it expires using the state's MMJ online system.

Know The Expiration	Typical Length	Where To Find The Exp. Date	How To Renew
Doctor's Certification	3-12 months	Certification paperwork; MMJ online system	Schedule an appointment with your certifying doctor or nurse practitioner
State Registration	1 year	MMJ online system	Login to the MMJ online system up to 60 days before your expiration date to re-register
Registration Card	1-3 years	On your registration card	Login to the MMJ online system up to 60 days before your expiration date to re-register



Part Two: Treatment



Where to begin?

We began as a dispensary for medical cannabis to provide people with alternative treatment options. But treatment can mean a lot of different things to different people.

To veterans and other trauma victims who seek to ease symptoms of PTSD, anxiety, and depression, treatment can mean a good night of sleep for the first time in years. To cancer patients undergoing chemotherapy, treatment can mean the welcome return of an appetite. To our adult-use customers, treatment may simply mean a treat at the end of a long day.

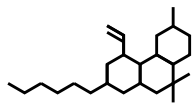
Whether you wish to treat your symptoms or yourself, NETA is here to help you find the right products, strains, and doses for you.

Introduction To Cannabis

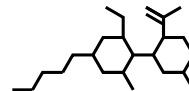
THC & CBD

THC is the cannabinoid in cannabis typically attributed to the plant's psychoactive effects.

CBD is the minimally psychoactive cannabinoid in cannabis that may relieve anxiety, inflammation, and more.



DELTA-9-TETRAHYDROCANNABINOL



CANNABIDIOL

THC & CBD are the two main compounds found in the cannabis plant. These compounds are called cannabinoids. There are over 85 cannabinoids in cannabis, but THC and CBD are the most abundant and researched.

Cannabis Types

The effect of marijuana depends largely on which type of cannabis you consume.

Sativa

Sativas are reported to have the following effects:

Mood elevation	Increased creativity
Increased energy	Thought provoking
Increased sense of well-being	Increased appetite
Increased focus	

Individual experiences will vary, so it is important to experiment with different strains to achieve desired results. Sativas are often recommended for daytime use.

Indica

Indicas are reported to have the following effects:

Relaxation & stress relief	Reduces anxiety
Relaxes muscles	Relieves nausea
Reduces spasms	Stimulates appetite
Reduces pain	Reduces intraocular pressure
Reduces inflammation	Antiepileptic
Promotes sleep	

For some individuals, indicas may result in tiredness and unclear thinking. Indicas are often recommended for evening use.

Hybrid

Hybrid strains are produced when two or more different strains are cross-bred. Strains are often tailored through cross-breeding, with one variety typically dominant, to create the desired therapeutic effects. Hybrids can be sativa-leaning or indica-leaning depending on the strain.

CBD Dominant

CBD strains are reported to be helpful in treating a number of medical conditions and symptoms, while producing little to no intoxicating effects (or “high”). It has been reported that CBD can be used in the treatment of epilepsy.

Antiepileptic

Reduces pain

Reduces anxiety

Reduces inflammation

Anti-spasmodic

CBD:THC 1:1

A one-to-one ratio of CBD and THC. These products offer a balance between the psychoactive and non-intoxicating effects of cannabis that some individuals report to be helpful.

Antiepileptic

Reduces pain

Reduces anxiety

Reduces inflammation

THC-A

Another potential option for individuals looking to avoid a psychoactive effect is THC-A. THC-A is the main non-intoxicating cannabinoid constituent in raw cannabis.

It converts to THC when burned, vaporized, or heated. NETA offers THC-A edible formulations that have been reported to have the following properties.

Reduces pain

Reduces inflammation

Reduces anxiety

Reduces nausea



Understanding The Product Label

The label affixed to all NETA medical marijuana products includes useful information to help guide your responsible use. Always thoroughly read the label. Examples of our product labels for flower and edibles can be found on the following pages.

Ounces to grams conversion

Cannabis is often sold to patients in grams or ounces. We’ve provided a conversion chart to help with any confusion around understanding the weight of your purchase.

oz.	g
1/8	3.5
1/4	7
1/2	14
1	28
2	56
10	280

Please note: All conversions are approximate and have been rounded up or down to the nearest whole number.

Understanding A Flower Label

Product/name/variety

Date of testing

Total amounts of cannabinoids contained

PRE ROLL - 0.75g

STRAIN: BLACK TRIANGLE KUSH

BATCH: BLT-180908-133

NET WEIGHT: 0.75g (0.0265 OZ)

TESTED: 1/02/2019

PACKAGED: 1/05/2019

USE BY: 1/04/2020

TAC 25.4%

< 1%

23.5%

< 1%

1.6%

N/D

< 1%

DB-THC

THC-A

CBD

CBG

CBN

CBC

The unique batch this product came from

The total amount of marijuana contained within the package

The date the label was printed and the product was packaged

NEW ENGLAND TREATMENT ACCESS, LLC

5 FORGE PARKWAY

FRANKLIN, MA 02038

TEL: (844)783-6382

CONTACT@NETACARE.ORG

NETACARE.ORG

CULTIVATION LICENSES: MC281267, RMD125-C

RETAIL LICENSES: MR281287 & RMD185-R; MR281240 & RMD125-R

MARIJUANA PRODUCT PACKAGED BY NEW ENGLAND TREATMENT ACCESS, LLC.

KEEP THIS PRODUCT AWAY FROM CHILDREN.

THIS PRODUCT HAS BEEN TESTED FOR CONTAMINANTS AND THERE WERE NO ADVERSE FINDINGS.

This product has not been analyzed, studied or approved by the FDA. There is limited information on the side effects of using this product, and there may be associated health risks. Marijuana use during pregnancy and breast-feeding may pose potential harms. It is against the law to drive or operate machinery when under the influence of this product. KEEP THIS PRODUCT AWAY FROM CHILDREN. Driving under the influence of marijuana may result in a traffic stop and criminal prosecution. This product has been evaluated for environmental contamination (impurities) assuming that no more than 10 grams (0.35 ounces) of finished plant material (or the equivalent amount of concentrate) will be consumed per day.

NETA’s sale location and phone number

Important warnings

Understanding An Edible Label

The unique batch that this product came from

The total active cannabinoid breakdown

The date the product was packaged

The total amount of flower equivalent contained within the product

Product ingredients

Chocolate BAR-100mg

INDICATION: THC
FL. OZ: 0.0208 OZ
M.J. WT: 0.0035 OZ
INGREDIENTS: COCOA, SUGAR, COCOA BUTTER, SOY LECITHIN, NATURAL VANILLA FLAVORING, CANNABIS CONCENTRATE, MCT OIL.
ALLERGENS: CONTAINS SOY. MAY CONTAIN TREE NUTS.

BATCH: 190814WBD-100-THC
NET WT: 56.5g (1.9930 OZ)
MARIJUANA TYPE: DISTILLATE

	PKG TOTAL	SRVg TOTAL	PKG%	SRVg%
D9-THC	98.9mg	4.94mg	100%	5%
THC-A	N/D	N/D	N/D	N/D
CBD	N/D	N/D	N/D	N/D
CBG	N/D	N/D	N/D	N/D
CBN	N/D	N/D	N/D	N/D
CBC	N/D	N/D	N/D	N/D

Total Package **98.9mg**

CREATED ON: 1/14/2020

TESTED: 1/12/2020

USE BY: 1/24/2021

VEGAN

THE SERVING SIZE OF ACTIVE THC IN THIS PRODUCT IS 4.94mg. THIS PRODUCT CONTAINS 20 SERVINGS OF MARIJUANA. TOTAL AMOUNT OF ACTIVE THC IN THIS PRODUCT IS 98.9mg.

TOTAL SERVINGS: **20** PIECES

PROCESSING TYPE: HYDROCARBON or ETHANOL-BASED / FRACTIONAL DISTILLATION

PER SERVING: **4.94mg**

THE EFFECTS OF THIS PRODUCT MAY BE DELAYED BY TWO HOURS OR MORE.

Peel

Nutrition Facts
20 servings per container
Serving size 1 piece (3g)
Amount Per Serving
Calories 15

	% Daily Value*
Total Fat 1g	1%
Saturated Fat 0.5g	3%
Trans Fat 0g	
Cholesterol 0mg	0%
Sodium 0mg	0%
Total Carbohydrate 2g	1%
Dietary Fiber 0g	0%
Total Sugars 1g	
Includes 1g Added Sugars	2%
Protein 0g	
Vitamin D 0mcg	0%
Calcium 0mg	0%
Iron 0.2mg	2%
Potassium 20mg	0%

*The % Daily Value (DV) tells you how much a nutrient in a serving of food contributes to a daily diet. 2,000 calories a day is used for general nutrition advice.

Label design may vary depending on product type. Additional warnings are found on product packaging.

Date of testing

The "use by" date

Consult With Your Doctors

Always speak with a doctor before using cannabis. If you are taking other medications or drugs, please consult with your doctors about possible interactions.

Before you use medical marijuana, you should consult with your physician, particularly if:

- You have heart disease
- You have asthma or other respiratory diseases
- You have a history of drug or alcohol abuse or dependence
- You have a history of a serious mental disorder

Possible Side Effects

Some patients report dry mouth, forgetfulness, dizziness or paranoia when using cannabis. While many patients use cannabis to combat anxiety, it may create anxiety for some. Cannabis can slow your reaction times and you should not drive or use heavy machinery while under the influence of cannabis. Responsible dosing (see guide on page 26) can help in avoiding unpleasant experiences with cannabis.

Tracking Your Results

Medical marijuana comes in many varieties and forms, each with its own cannabinoid profile and differing effects. Patients should track their experience using medical marijuana in order to modify treatment regimens accordingly. You will be issued a Patient Strain & Product Log upon your registration at NETA, which can be used as a tool to track which strains and products you use, which method, at which dosage and the associated effects. A sample log can be found on the following page, with examples.

What Method Of Use Is Right For Me?

There are many different ways to use marijuana to achieve your desired results.

We recommend that you explore various therapies to determine which approach works best for you. Feel free to speak with a guide to discuss products and method of use.

Method	Start With	Products	Attributes	Limitations
Smoking	One Inhalation	Flower	Most traditional method. Effects felt almost immediately. Smoking devices generally are inexpensive, easy to clean and accessible. Maintains flavor.	Burning at high temperatures may compromise the efficacy of some cannabinoids. Can be limiting for individuals with lung/respiratory issues. Distinct, strong aroma.
Vaporizing	One Inhalation	Flower Apex* PAX®* Wax* Shatter* Kief* Distillate*	Effects felt immediately. Easy dosing with some devices. Keeps most cannabinoids intact. Can be compact and discreet. Little cannabis aroma; no burning smell.	Cartridge vaporizers (like the RemPen) require little to no maintenance. Flower and other concentrate vaporizers require some light maintenance and can be more expensive.
Edibles	5mg or less	Gems Nuggets Lumens Bar	Long-lasting effects. Ideal for individuals with lung/respiratory issues. Discreet. Tastes delicious.	Delayed onset. May require more trial and error.
Capsules	One 5mg Capsule	Upside	Long-lasting effects. Ideal for individuals with lung/respiratory issues. Discreet. No taste or smell. Quick and easy to consume.	Delayed onset. May require more trial and error.
Tinctures	5mg Serving or less	Wishing Well Tinctures	Quicker onset if absorbed under tongue. Steady lasting effects. No smell. Discreet. Easy dosing.	Delayed onset if swallowed.
Topicals	1 or 2 pumps	Allay Lotion The Fix	Little to no “high.” Easy application. Discreet. Long-lasting effects.	Skin must be clean, dry and intact. Not recommended for sensitive skin or open wounds/sores.
Beverage Additives	1 bottle (5mg total)	Heights	Quicker onset than edibles. Steady, lasting effects. No smell. Discreet.	Delayed onset. May require more trial and error.

*Concentrates such as wax, shatter and distillate have a high THC content. This may result in stronger, more pronounced, and longer-lasting effects. Consume responsibly.

What Products Are Right For Me?

At NETA, we know that the effects of different cannabis products can vary greatly depending on the individual.

Each person metabolizes, processes and experiences marijuana differently. Different therapies work well to deliver your desired effect. Plus, there are individual preferences around the length of impact, day vs. nighttime relief, method of use and type of effects experienced, among others.

Flower

FRESH PACKED Premium marijuana buds
PRE-ROLLED Mini, regular, and multi-packs

Vape Pens

APEX High potency distillate, glass cartridge
APEX ONE Battery + Distillate, All-In-One
PAX® Our most premium, buttonless, distillate vape solution

Edibles

BAR Belgian dark chocolate
LUMENS Fruit flavored gummies
NUGGETS Chocolate caramels
GEMS Watermelon-flavored lozenges
ELEVATION OIL Infused cooking oil
DROPS Fast acting, water soluble beverage additive
LOZENGE Long-lasting, raspberry-flavored confection
CUBES Assorted fruit-flavored chews

Concentrates

SHATTER Potent, glass like concentrate
WAX Soft, clay like, and terpene rich
KIEF Cannabinoid rich trichomes
DISTILLATE Highest purity and potency

Infused

ALLAY Infused body lotion
THE FIX Cooling balm
UPSIDE Convenient and discreet capsules
WISHING WELL 1mg per drop tincture
SUPPOSITORIES Infused alternative to oral consumption





Dosing Guide

Products will vary in potency (strength of effect on body and mind) and cannabinoid profile. Strain specific details and ingredients are clearly labeled on all of our products after they are tested by accredited third-party labs. It is important that anyone using marijuana is careful in finding the appropriate dose for their desired therapeutic effects. Each person is unique, and may experience marijuana quite differently.

5mg (or less)

The suggested dose for an inexperienced edible user

2 hours (or more)

Amount of time to wait before increasing your edible dose

Get Comfy

Eat a snack. Get cozy. Be sure to re-read the testing label.

Start Low

Start with a low dose.

Follow directions on the labels for all products.

Go Slow

Wait the recommended amount of time between dosages.

Enjoy

Remember to note the time you consume an edible and keep track of the onset and duration.

Edibles

Start with **5mg or less**.

Wait at least 2 hours before eating more.

ONSET

EFFECTS FELT



15 min. to 2 hours

4 to 8 hours or more

Flower/Vape

Start with **1 inhalation**.

Wait 15-20 minutes before taking another inhalation.

ONSET

EFFECTS FELT



1 to 15 minutes

2 to 6 hours or more

Sublingual Under tongue

Start with **5mg or less**.

Wait 30-60 minutes before taking additional dose.

ONSET

EFFECTS FELT



15 to 30 minutes

2 to 4 hours or more



If you're new to NETA

1/8th oz of flower	1 Gems box
3 pre-rolled joints	1 Fix jar
1 Lumens bottle	

If you love edibles

1 Heights bar	1 Nuggets box
1 Lumens bottle	1 Elevation Oil bottle
1 Gems box	1 Drops bottle

If you want convenience

1 Gems box	3 pre-rolled joints
1 Lumens bottle	20 ct. Upside capsules



Part Three: Safety

Things You Need To Know

Alcohol

Do not mix marijuana and alcohol.

Driving & Machinery

Never drive or operate machinery under the influence of marijuana.

Eating

Do not eat Marijuana Infused Products on an empty stomach. Eating a full meal before consuming Marijuana Infused Products is recommended as it helps in lowering the intensity of effects.

Too Much?

Anxiety and paranoia may accompany accidental over-ingestion. In this event, it is best to stay calm and remain in a comfortable, safe place. With time, these unwanted effects will pass.

Pregnancy

There may be additional health risks associated with consumption of cannabis for women who are pregnant, breastfeeding or planning on becoming pregnant. Please consult your doctor.

Where can I smoke?

- In a private space where smoking and/or vaping are allowed.
- Not in or around NETA's dispensaries.
- Sorry, smoking in public is prohibited by state and local laws.

Can I travel with my cannabis?

- Up to 10oz inside the state of MA, as long as you are traveling with your medical card.
- Possessing more than the legal limit (1 oz.) outside your home may be penalized by up to 6 months imprisonment / \$500 fine.

How much cannabis can I purchase?

- Medical patients can purchase up to their 60-day limit set, typically 10oz per 60 days unless otherwise determined by their healthcare practitioner.
- Possessing more than the legal limit (1 oz.) outside your home may be penalized by up to 6 months imprisonment / \$500 fine.

How do I store my cannabis?

- Always keep your cannabis locked and secure in your home away from children and pets! Do not store near other food items. To keep your cannabis fresh, store it in a dark, dry and cool place.

Can I share my cannabis?

- Selling marijuana to others is illegal and a first time offense (under 50 lbs) may be punishable by up to 2 years imprisonment / \$5,000 fine. Subsequent offenses may be punishable by up to 2.5 years imprisonment / \$10,000 fine.
- Registered qualifying patients may not distribute any marijuana to any other individual, and they must return unused, excess, or contaminated product to the MTC from which they purchased the product, for disposal.



Tolerance, Dependence & Withdrawal

Signs and symptoms of drug abuse and drug addiction

Although different drugs have different physical effects, the symptoms of addiction are similar. If you recognize the signs and symptoms of substance abuse, consider talking to someone about your drug use. Some examples of signs and symptoms of substance abuse are:

- **Neglecting responsibilities at school, work, or home because of drug use.**
- **Using drugs under dangerous conditions or taking risks while high.**
- **Built up a drug tolerance.**
- **Take drugs to avoid or relieve withdrawal symptoms. Symptoms may include nausea, sweating, shakiness, and extreme anxiety.**
- **Causing problems in relationships.**
- **Abandoning enjoyed activities.**
- **Continue using drugs, despite knowing it's hurting you.**
- **Losing control over drug use, may want to stop using, but feel powerless.**

If you suspect that you're developing any of the symptoms listed above, discontinue use immediately and seek help.

HELPGUIDE.ORG, a non-profit resource promoting mental and emotional health, provides the following information to help recognize substance abuse. More information can be found at: www.helpguide.org/articles/addictions/drug-abuse-and-addiction.htm

Information For Patients

It is recommended that patients begin with the smallest dose possible and adjust accordingly over time.

- For discussion on tolerance of marijuana, as well as the possibility of dependence and withdrawal, please visit: <http://www.dependency.net/learn/marijuana/>
- For information on substance abuse signs and symptoms, please visit: http://www.helpguide.org/mental/drug_substance_abuse_addiction_signs_effects_treatment.htm
- Registered qualifying patients may not distribute marijuana to any other individual. All unused, excess, or contaminated product must be returned to the NETA location from which the product was purchased for proper disposal.

Safety & Responsibility

Good Neighbor Policy

NETA will always strive to be a good neighbor. We seek to be a model dispensary and will do our part to ensure that we are responsible, responsive and compliant with all state and local laws and regulations. Our staff strives to perform in a way that is professional, respectful and thoughtful. We kindly request that the people we serve follow the same standards to ensure successful implementation of the program and to garner the respect of our communities.

Use of marijuana or marijuana products on or around NETA's facilities is strictly prohibited. Our facilities are equipped with parking lots for your convenience. Please do not park illegally on the streets surrounding our stores or in spaces not intended for dispensary use. We strongly encourage the use of public transportation.

We want you to feel safe when you visit a NETA dispensary. Please let us know if you need extra assistance while you're visiting our stores. Please immediately report any suspicious or illegal activity. Being a good neighbor will allow us to maintain a healthy relationship with the communities we serve and be able to serve your needs for years to come.

Responsible Use

Medical marijuana may cause impaired motor skills and drowsiness. Avoid driving or operating heavy machinery when using your medicine. It is illegal to drive under the influence of marijuana (M.G.L. c.90, s.24). If you're inexperienced using medical marijuana, it is a good idea to have someone with you the first time you medicate. Stop use if you feel confused, stressed, anxious or uncomfortable. Remember to go "low and slow", especially with edibles and infused products that have a delayed impact and are long lasting (see guide on page 26).



KEEP YOUR MEDICINE AWAY FROM CHILDREN!

Medical marijuana can cause harm to children and should be stored in its original childproof packaging provided by NETA and ideally under lock and key to avoid accidental ingestion by children or others.

To avoid the risk of accidental ingestion, DO NOT store edible marijuana products with other foods.

Please be responsible about SAFE STORAGE.

What The Science Says

Americans for Safe Access (ASA) compiled over 200 scientific and scholarly articles and summarized the potential therapeutic effects of medical marijuana in “Medical Cannabis Research: What the Science Says”. This document can be a valuable tool in understanding the basic science behind medical marijuana use and its potential effectiveness and versatility in treating a number of conditions.

To access this document, Google: “ASA What The Science Says” or, go to: www.safeaccessnow.org/medical_cannabis_research_what_does_the_evidence_say

Other organizations have also compiled research on medical marijuana that may serve as a resource to you:

1. Health Canada

Information for Health Care Professionals - Cannabis and the Cannabinoids

Google: “Health Canada MMJ Info HC Professionals”, or:

www.hc-sc.gc.ca/dhp-mpps/alt_formats/pdf/marihuana/med/infoprof-eng.pdf

- Focuses on info to help medical professional appropriately recommend cannabis, but also useful for patients and caregivers
- Overview of science & research, dosing, potential uses and possible adverse effects

2. American Academy of Cannabinoid Medicine

Google: “American Academy of Cannabis”, or: **www.aacmsite.org**

- Organization of clinicians & researchers supporting the use of cannabis medicines
- Provides education to medical professional and the public on cannabinoids and the endocannabinoid system

3. Project CBD

Google: “Project CBD”, or: **www.projectcbd.org**

- Updates doctors and patients on developments in cannabinoid science and therapeutics.
- Supports further research and developments on cannabinoid medicines

4. National Organization for the Reform of Marijuana Laws (NORML)

Google: “NORML Medical Marijuana Research”, or:

www.norml.org/library/recent-research-on-medical-marijuana

- Advocacy organization supporting the reform of marijuana laws
- Includes a compilation of the recent research supporting medical marijuana use for a variety of identified conditions

5. Marijuana Policy Project (MPP)

Go to: **www.mpp.org/issues/medical-marijuana/**

- Advocacy organization supporting marijuana policy reform
- Provides information supporting the use of medical marijuana, including research briefings, effective arguments, legislative overviews and federal policy



Strain & Product Log

Use this log to document your experience using cannabis strains and products.

EXAMPLE				
1	DATE 01/15/20	PRODUCT Flower	STRAIN/TYPE Facewreck (Sativa)	METHOD OF USE Vaporized
DOSAGE	3 puffs	EFFECTS & SYMPTOM RELIEF Eased pain	ONSET/DURATION Instant/2.5 hours	
NOTES Really liked this strain. Helped w/ pain but also created feeling of general happiness. Effects lasted about 2.5 hours.				
2	DATE	PRODUCT	STRAIN/TYPE	METHOD OF USE
DOSAGE		EFFECTS & SYMPTOM RELIEF		ONSET/DURATION
NOTES				
3	DATE	PRODUCT	STRAIN/TYPE	METHOD OF USE
DOSAGE		EFFECTS & SYMPTOM RELIEF		ONSET/DURATION
NOTES				
4	DATE	PRODUCT	STRAIN/TYPE	METHOD OF USE
DOSAGE		EFFECTS & SYMPTOM RELIEF		ONSET/DURATION
NOTES				
5	DATE	PRODUCT	STRAIN/TYPE	METHOD OF USE
DOSAGE		EFFECTS & SYMPTOM RELIEF		ONSET/DURATION
NOTES				

6	DATE	PRODUCT	STRAIN/TYPE	METHOD OF USE
DOSAGE		EFFECTS & SYMPTOM RELIEF		ONSET/DURATION
NOTES				
7	DATE	PRODUCT	STRAIN/TYPE	METHOD OF USE
DOSAGE		EFFECTS & SYMPTOM RELIEF		ONSET/DURATION
NOTES				
8	DATE	PRODUCT	STRAIN/TYPE	METHOD OF USE
DOSAGE		EFFECTS & SYMPTOM RELIEF		ONSET/DURATION
NOTES				
9	DATE	PRODUCT	STRAIN/TYPE	METHOD OF USE
DOSAGE		EFFECTS & SYMPTOM RELIEF		ONSET/DURATION
NOTES				
10	DATE	PRODUCT	STRAIN/TYPE	METHOD OF USE
DOSAGE		EFFECTS & SYMPTOM RELIEF		ONSET/DURATION
NOTES				

11	DATE	PRODUCT	STRAIN/TYPE	METHOD OF USE
	DOSAGE	EFFECTS & SYMPTOM RELIEF	ONSET/DURATION	
NOTES				

12	DATE	PRODUCT	STRAIN/TYPE	METHOD OF USE
	DOSAGE	EFFECTS & SYMPTOM RELIEF	ONSET/DURATION	
NOTES				

13	DATE	PRODUCT	STRAIN/TYPE	METHOD OF USE
	DOSAGE	EFFECTS & SYMPTOM RELIEF	ONSET/DURATION	
NOTES				

14	DATE	PRODUCT	STRAIN/TYPE	METHOD OF USE
	DOSAGE	EFFECTS & SYMPTOM RELIEF	ONSET/DURATION	
NOTES				

15	DATE	PRODUCT	STRAIN/TYPE	METHOD OF USE
	DOSAGE	EFFECTS & SYMPTOM RELIEF	ONSET/DURATION	
NOTES				

16	DATE	PRODUCT	STRAIN/TYPE	METHOD OF USE
	DOSAGE	EFFECTS & SYMPTOM RELIEF	ONSET/DURATION	
NOTES				

17	DATE	PRODUCT	STRAIN/TYPE	METHOD OF USE
	DOSAGE	EFFECTS & SYMPTOM RELIEF	ONSET/DURATION	
NOTES				

18	DATE	PRODUCT	STRAIN/TYPE	METHOD OF USE
	DOSAGE	EFFECTS & SYMPTOM RELIEF	ONSET/DURATION	
NOTES				

19	DATE	PRODUCT	STRAIN/TYPE	METHOD OF USE
	DOSAGE	EFFECTS & SYMPTOM RELIEF	ONSET/DURATION	
NOTES				

20	DATE	PRODUCT	STRAIN/TYPE	METHOD OF USE
	DOSAGE	EFFECTS & SYMPTOM RELIEF	ONSET/DURATION	
NOTES				

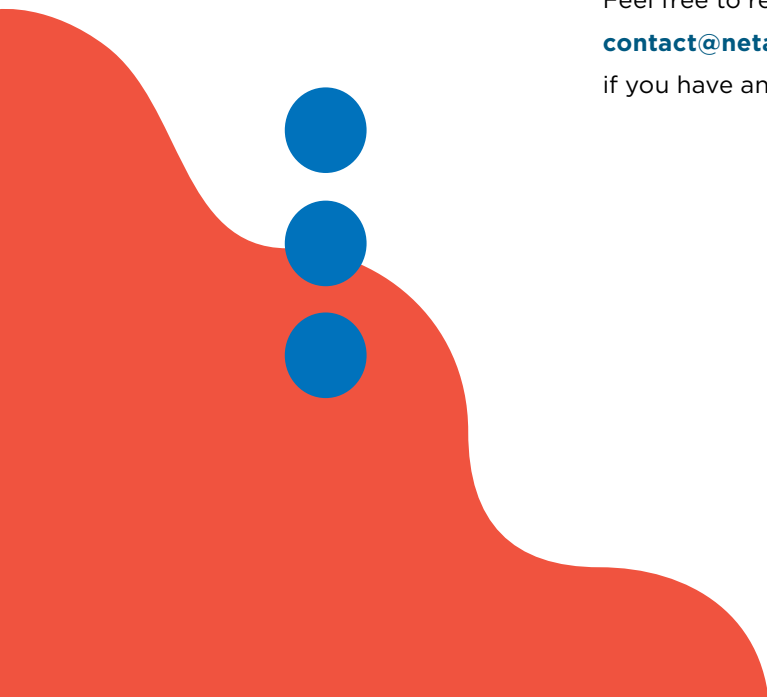


At netacare.org, you can:

- ▶ Order medical delivery.
- ▶ View educational resources to decide if medical cannabis is right for you.
www.netacare.org/learn
- ▶ Create an account and reserve your order for a quick in-and-out experience.
- ▶ Chat live with our Customer Care Team.

We welcome and value your feedback.

Feel free to reach out by phone [\(617\)377-7408](tel:6173777408), email contact@netacare.org, or in-person at your next visit if you have any questions. We're happy to help!





NETA

New England Treatment Access, LLC. (NETA) does not give medical advice. NETA does not make any claims regarding the safety or efficacy of marijuana due to the lack of substantial evidence or substantial clinical data with reasonable scientific rigor. The information provided in this document is based on information reported by patients and other sources and should not be construed as claiming the safety or efficacy of marijuana. This handbook and other materials distributed by NETA are informational only and not intended to be a substitute for professional medical advice, diagnosis or treatment. Always seek the advice of your physician or other qualified health provider with any questions you may have regarding a medical condition.

NETACARE.ORG