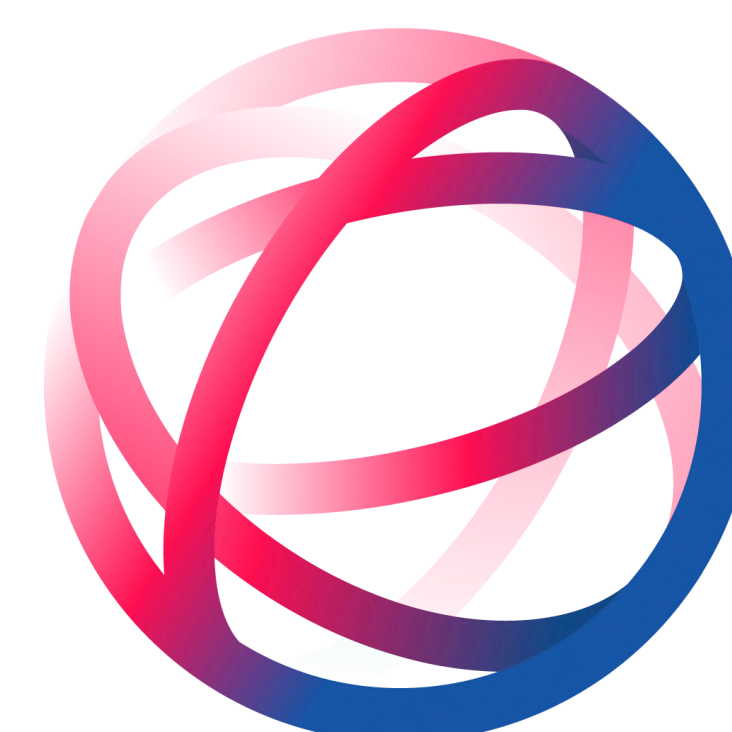


20
26

TRAINING CALENDAR

MDF Asia



MDF
EMPOWERING PEOPLE,
CREATING IMPACT

2026 MDF Asia

Training Calendar Overview

APR **Managing for Sustainable Impact**
21-24 April

MAY **Transformational Leadership and People Empowerment**
19-22 May

JUN **Monitoring and Evaluation Learning**
9-12 June

AUG **Advocacy & Policy Influencing**
4-7 August

SEP **Locally-Led Development and Partnerships**
22-24 September

OCT **Impact Evaluations**
13-16 October

NOV **Organizational Capacity for Sustainable Change**
10-13 November

All trainings will be located in Bangkok, Thailand. More details on the venue will be shared upon registratin.

Modality of all trainings: In-Person

A P R I L						
S	M	T	W	T	F	S
		1	2	3	4	5
6	7	8	9	10	11	12
13	14	15	16	17	18	19
20	21	22	23	24	25	26
27	28	29	30			

M A Y						
S	M	T	W	T	F	S
				1	2	3
4	5	6	7	8	9	10
11	12	13	14	15	16	17
18	19	20	21	22	23	24
25	26	27	28	29	30	31

J U N E						
S	M	T	W	T	F	S
1	2	3	4	5	6	7
8	9	10	11	12	13	14
15	16	17	18	19	20	21
22	23	24	25	26	27	28
29	30					

J U L Y						
S	M	T	W	T	F	S
		1	2	3	4	5
6	7	8	9	10	11	12
13	14	15	16	17	18	19
20	21	22	23	24	25	26
27	28	29	30	31		

A U G U S T						
S	M	T	W	T	F	S
					1	2
3	4	5	6	7	8	9
10	11	12	13	14	15	16
17	18	19	20	21	22	23
24	25	26	27	28	29	30
31						

S E P T E M B E R						
S	M	T	W	T	F	S
	1	2	3	4	5	6
7	8	9	10	11	12	13
14	15	16	17	18	19	20
21	22	23	24	25	26	27
28	29	30				

O C T O B E R						
S	M	T	W	T	F	S
			1	2	3	4
5	6	7	8	9	10	11
12	13	14	15	16	17	18
19	20	21	22	23	24	25
26	27	28	29	30	31	

N O V E M B E R						
S	M	T	W	T	F	S
						1
2	3	4	5	6	7	8
9	10	11	12	13	14	15
16	17	18	19	20	21	22
23	24	25	26	27	28	29
30						

D E C E M B E R						
S	M	T	W	T	F	S
	1	2	3	4	5	6
7	8	9	10	11	12	13
14	15	16	17	18	19	20
21	22	23	24	25	26	27
28	29	30	31			

2026 MDF Asia

Training Calendar Overview

Managing for Sustainable Impact

21-24 April

Learning how to plan for sustainable impact with the help of the Theory of Change, good results frameworks and monitoring systems is the first crucial step for your organization.

Transformational Leadership and People Empowerment

19-22 May

This course helps leaders understand leadership styles through DISC, build personal accountability, lead diverse teams, manage conflict, give constructive feedback, and motivate themselves and others.

Monitoring and Evaluation Learning

9-12 June

This course equips practitioners to design effective MEL systems that go beyond tracking, apply the latest MEL approaches, use KPIs and qualitative methods, and turn monitoring and evaluation into a participatory learning practice.

Advocacy & Policy Influencing

4-7 August

This course empowers practitioners to shape policy agendas, amplify community voices, forge alliances, navigate political complexity, and influence decision-makers using practical tools for lasting societal change.

Locally-Led Development and Partnerships

22-24 September

This course focuses driving locally-led development through strong partnerships, social enterprise models, sustainable funding strategies, and cross-sector collaboration for lasting, locally grounded impact for professionals.

Impact Evaluations

13-16 October

This course guides practitioners to define, assess, and measure impact through clear steps, practical methodologies, and real-world tools, turning evaluation findings into credible evidence.

Organizational Capacity for Sustainable Change

10-13 November

This course enables teams to assess context, analyse organisational capacity, define strategic priorities, and design actionable plans that strengthen relevance, effectiveness, and long-term sustainability.

2026 MDF Asia

Training Pricelist

Training Name	Code	Duration	Price
Managing for Sustainable Impact	RBM	4 Days	EUR 1,050 + VAT/pax
Transformational Leadership and People Empowerment	LPM	4 Days	EUR 1,100 + VAT/pax
Monitoring, Evaluation & Learning	MEL	4 Days	EUR 1,050 + VAT/pax
Advocacy & Policy Influencing	API	4 Days	EUR 1,050 +VAT/pax
Locally-Development and Partnerships	LDP	3 Days	EUR 870 + VAT/pax
Impact Evaluations	IE	4 Days	EUR 1,050 + VAT/pax
Organizational Capacity for Sustainable Change	OAD	4 Days	EUR 1,050 + VAT/pax
1 Day = 8 hours (9:00 - 17:00)			

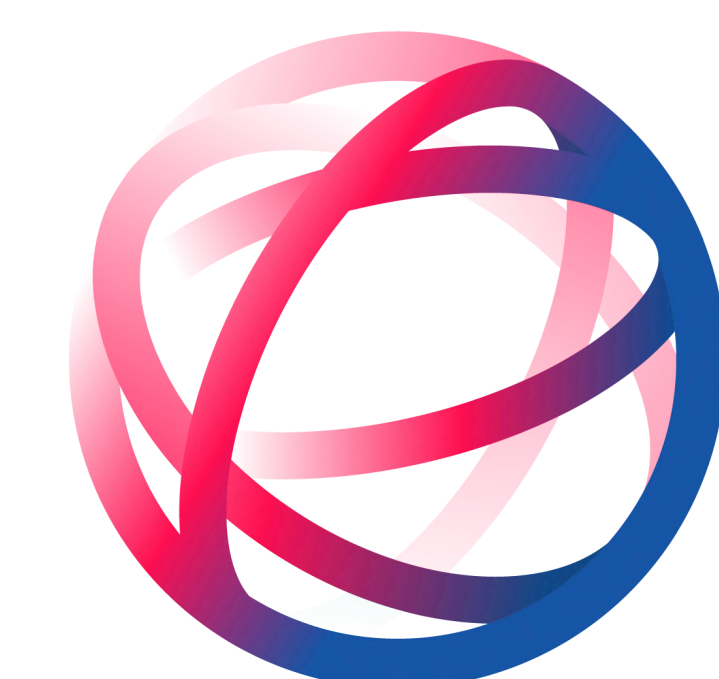
Special Offers

- 5% discount for registration and payment completed 3 (three) months before the course.
- 10% discount to alumni who attended an MDF course within the past 2 years before the course.
- 1 (one) FREE place for a group of 6 registrations from the same organisations

For more information, please contact:



mdfpi@mdf.nl



MDF
EMPOWERING PEOPLE.
CREATING IMPACT

MDF-AC



CALENDRIER DE FORMATION 2026

PERIODE	COURS	LIEU	PRIX
16 – 20 Mars 19-23 Octobre	Gestion Financière pour les Organisation et les Entreprises	Beni/RDC Goma/RDC	€700
6 – 9 Avril	Leadership et Management	Kinshasa/RDC	€600
4 – 8 Mai 18 - 29 Mai	Gestion des Ressources Humaines Gestion de Projets/Programmes de Développement	Kinshasa/RDC Gisenyi/Rwanda	€700 €1300
8 – 12 Juin 22-26 Juin 16-20 octobre	Gestion de Projets/Programmes Humanitaires Suivi, Evaluation, Redevabilité et Apprentissage	Kamembe/Rwanda Musanze/Rwanda Bukavu/RDC	€700 €700 €700
13 – 17 Juillet	Organiser son Entreprise et devenir Parfait Entrepreneur	Kinshasa/RDC Beni/RDC	€700
14-18 Septembre	Gestion Axée sur les Résultats	Goma/RDC	€700
16-20 Novembre	Techniques de Formation et de Facilitation	Kinshasa/RDC	€700





MDF

EMPOWERING PEOPLE.
CREATING IMPACT

Course Calendar 2026

Courses and Masterclasses

Languages: English and Dutch

MDF The Netherlands

Courses and Masterclasses 2026 | Online, Blended and In-Person

February

- ▶ **Management of Development Projects and Programmes - Intensive course (ENG)**
19 January to 13 February
In-person (20 days)

- ▶ **Impactgericht Werken (NL)**
9, 10 February + 9, 10 March
In-person (4 days)

March

- ▶ **Essentials for Effective Planning, Monitoring, Evaluation, and Learning (ENG)**
10, 11, 12 March
Self-paced learning & 3 days in-person

- ▶ **Writing Winning Proposals (ENG)**
12, 19, 26 March
Online learning: 3 interactive webinars & personal coaching

April

- ▶ **Leadership in a Complex World (ENG)**
7 and 14 April
Self-paced learning & 2 days in-person

- ▶ **Theory of Change: Planning for Impact (ENG)**
21 April
In-person (1 day)

May

- ▶ **Inclusive Collaboration: Project Management in International Settings (ENG)**
11, 12, 13 May
Self-paced learning & 3 days in-person

- ▶ **Gender-Sensitive M&E (ENG)**
19 May
In-person (1 day)

June

- ▶ **Training and Facilitation Skills - Summer School (ENG)**
15 to 19 June
Self-paced learning & 5 days in-person

September

- ▶ **Leadership and People Management - Summer School (ENG)**
7 to 11 September
Self-paced learning & 5 days in-person

- ▶ **Evaluating with Impact: How to Demonstrate Effects? (ENG)**
29 September
In-person (1 day)

- ▶ **Impactgericht Werken (NL)**
21, 22 September + 5, 6 October
In-person (4 days)

October

- ▶ **Essentials for Effective Planning, Monitoring, Evaluation, and Learning (ENG)**
6, 7, 8 October
Self-paced learning & 3 days in-person

- ▶ **Social Change Communication: From Data to Storytelling (ENG)**
13 and 27 October
In-person (2 days)

About MDF's Courses

Our course calendar includes a variety of formats: from one-day Masterclasses to short two- or three-day trainings, and extensive courses that combine online learning with a full week of face-to-face sessions.

Find more details at www.mdf.nl/courses

Impact is at our core

Everything we do aims to strengthen people and organisations to make a real difference. Our mission is simple yet powerful: empowering people, creating impact. Every training, facilitation, or advisory process we design is rooted in this belief. And we have done so for more than 40 years already.

Skilled trainers with field expertise

Our trainers combine years of hands-on experience with a passion for learning. They bring real-world insights from the field into every session. Their interactive approach ensures that learning is engaging, practical, and directly applicable to your work.

We love visuals

We believe visuals help people see, remember, and connect ideas. Graphics, photos, and drawings make complex concepts easier to grasp and more memorable. Whether online or face-to-face, visual thinking is part of how we learn together.

An inclusive and interactive learning environment

At MDF, learning is a shared experience. Participants are fully engaged through creative activities, role plays, and games that foster dialogue and exchange. Our sessions are designed to include every voice, stimulate reflection, and translate insights into action.

**We have special offers available
for our alumni and non-profit
organisations.
Contact us for more information.**

Course information & registration:



Jacqueline Stam
registration@mdf.nl



MDF The Netherlands

Bennekomseweg 41
6717 LL Ede
The Netherlands
www.mdf.nl
Tel: +31 318 650060