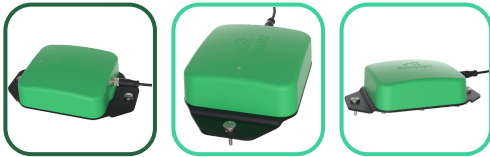


Product Overview

The Ribbiot Portal is both a GPS tracker and Gateway for communicating with Ribbiot Pods. This is a perfect solution for tracking large powered assets such as trailers and forklifts. It also works well for updating sites in real-time by updating the location of nearby Ribbiot Pod trackers.

The Portal has a large rechargeable battery that can operate in extreme temperatures and in both wired or wireless modes. Its rugged design ensures durability in harsh environments.



Connectivity

Ribbiot trackers leverage advanced communication technologies to ensure accurate and reliable asset tracking.

- LTE - Cell connectivity for remote updates
- GPS - Location and movement information
 - Accuracy: +/- 30ft
- Bluetooth Low Energy (BLE)- Phone connectivity, general asset location information.
 - Accuracy: +/- 20ft.
 - Range: ~250ft.
- Ultra Wide-Band (UWB) - Precision asset location information.
 - Accuracy: +/- 1in.
 - Range: ~50ft.
- Near-Field Communication (NFC) - Phone tap and provisioning.

Range and accuracy are affected by nearby metal and other materials

- Rugged Design: Water and dust-proof, impact and vibration-resistant.
- Long Battery Life*: 1-year battery life when updating position every 15min.
- Versatile Usage: Can be used on mobile assets, or be mounted stationary purely as a communication gateway for the Pods.

Software Features

The Ribbiot Portal offers a suite of software features including all features of the Ribbiot Pod. The Portal further enhances asset management and operational efficiency with the following:

- Remote update of all nearby Pods
- Movement based update intervals to optimize battery life
- Configurable for fixed installs or on mobile assets
- Configurable update intervals (15min - 12hrs) - prioritize recent data or battery life

*Battery life will be impacted by update interval rate and extreme weather conditions



Portal

Technical Specifications

Install Accessories

What's Included

- Portal Tracker
- Optional Power Cable: 4-pin w/ Aux. inputs & waterproof connector

Power

Built-in Rechargeable Li-Ion Battery

- Battery Operating Temperature: -40°F(-40°C) to 185°F (85°C)
- Battery Charging Temperature: -4°F(-20°C) to 140°F (60°C)

External Input

- 6-30V DC (0.1W typ / 8W max)
- Recommended 12V 1A Power Adapter

Enclosure

Material

- Enclosure: UV-Stabilized, chemical resistant, polycarbonate-based polymer
- Baseplate: Aluminum Alloy, Hard Anodized

Dimensions

- 6.6 x 4.0 x 1.7in (168 x 102 x 42mm); including mounting base plate

Weight

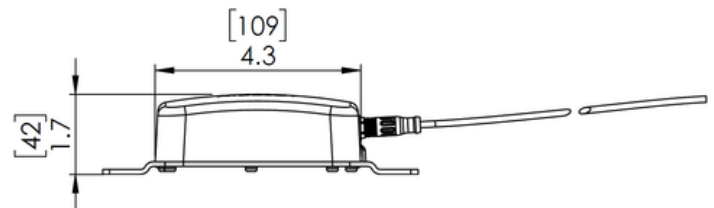
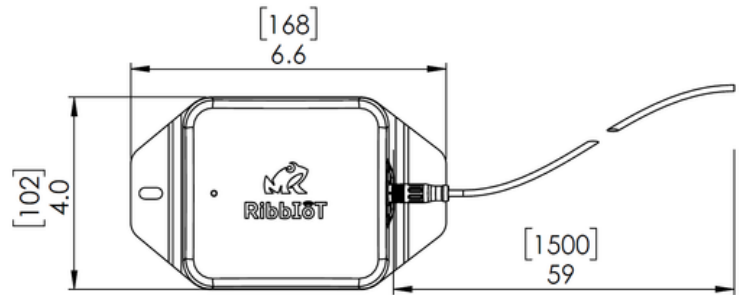
- 14.2oz (402g)

Operating Temperature

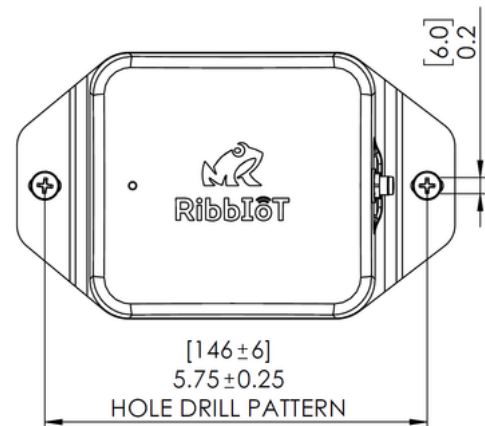
- -40°F(-40°C) to 140°F (60°C)

IP Rating

- Submersible in up to 1m of water for 30 minutes
- Resistant to high-pressure washdowns



The RibbiIoT Portal Asset Tracking Gateway - overall size and dimensions, including mounting base plate



Bolt Hole Drill Pattern for Mounting with Bolts / Screws

Fastener Installation

Recommended fasteners:

- Machine Screw (Socket / Button / Hex Head)
 - M5; i.e. M5x0.8
 - #10; (i.e. 10-24 or 10-32)
- Self Tapping Screw (Round / Hex Head)
 - #10 Self Drilling Screws for Metal, i.e. #10x0.5in.
- Wood Screw (Button / Hex Head)
 - #10 Screws for Wood: i.e. #10x0.75in



Update Intervals

External Power Default Behavior

- Continual scanning for nearby Pod devices
- GPS location updates every 3min

Battery Power Default Behavior

- Scanning for nearby pods every 15min
- GPS location updates every 15min

Update intervals are user configurable





Wiring and Charging

4 Conductor cable

- Power input and ground
 - Built-in input protection for reverse polarity, over current, under and over voltage.
- x2 Auxiliary Inputs
 - can be used to track hours, current state or usage history

Battery Charging

- Built-in charger, battery protection and power detection.
- 6hr for full charge is typical, 12hr charge time in cold temperatures < 32°F(0°C)
- The battery must be charged before use.

Connection	Color	Notes
Power Input	Blue 	6-30V DC 0.1W typical 8W max while charging
Ground	White 	Ground
Optional Engine Hours Input 1	Brown 	Sense input can range from 6-30V DC, typically wired to switched power
Optional Auxiliary Input 2	Black 	Sense input can range from 6-30V DC

Typical Applications

Indoor Fixed Locations

- Warehouse walls or interior pillars, Storage facilities for gear/equipment, etc..
- Ideally powered by a 12V DC 1A power supply plugged into a nearby outlet
- Provides updated location information for all nearby pods installed on assets located in the warehouse

Powered Asset installation

- Trailer/Dolly/intermittent power - Connect to the 12V power and ground signal on the connector. The battery will charge when the trailer has power.
- Forklift/Vehicle - connect straight to the batteries for constant updates of all nearby pods and location of the lift. Connect the aux input to the ignition to track engine hours.
- Crane - connect to batteries for power and aux inputs to track engine hours of the main engine and PTO.



***Place the Portal in clear view of the sky for best GPS and Cell performance**