

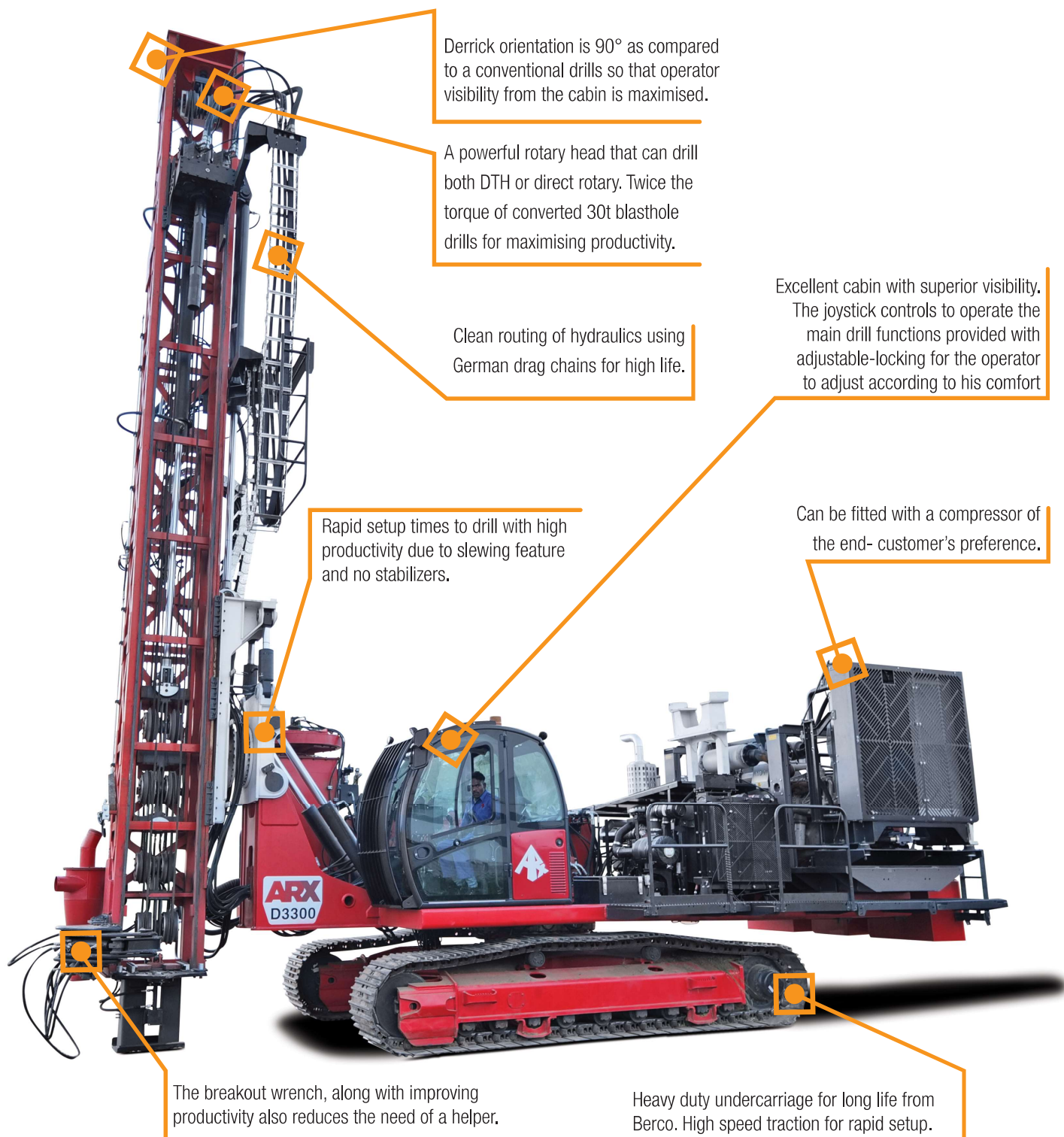
D3300 Blasthole Drill (DTH / Rotary)

ARX

Mining & Construction
Equipment Pvt. Ltd.

**SIMPLER,
SMARTER
TECHNOLOGY.**





Derrick orientation is 90° as compared to a conventional drills so that operator visibility from the cabin is maximised.

A powerful rotary head that can drill both DTH or direct rotary. Twice the torque of converted 30t blasthole drills for maximising productivity.

Clean routing of hydraulics using German drag chains for high life.

Excellent cabin with superior visibility. The joystick controls to operate the main drill functions provided with adjustable-locking for the operator to adjust according to his comfort

Rapid setup times to drill with high productivity due to slewing feature and no stabilizers.

Can be fitted with a compressor of the end- customer's preference.

The breakout wrench, along with improving productivity also reduces the need of a helper.

Heavy duty undercarriage for long life from Berco. High speed traction for rapid setup.



Key Benefits:

- Ability to drill from 6 to 24 m with DTH or air rotary (6 to 8 inches hole diameter).
- High aesthetic appearance and ergonomic comfort to boost productivity.
- Drill efficiency indicator, telematics for health monitoring to expedite service.
- Innovative design that combines the high traction speed of an excavator, the slewing function of a piling rig and a strong derrick that can be customized for different rod lengths.
- All standard blasthole drill features available including water injection, breakout wrench, dust collector, three rod lazy Susan type carousel (to work up to 24m with one rod in the head and 3 in the changer).

TECHNICAL SPECIFICATIONS

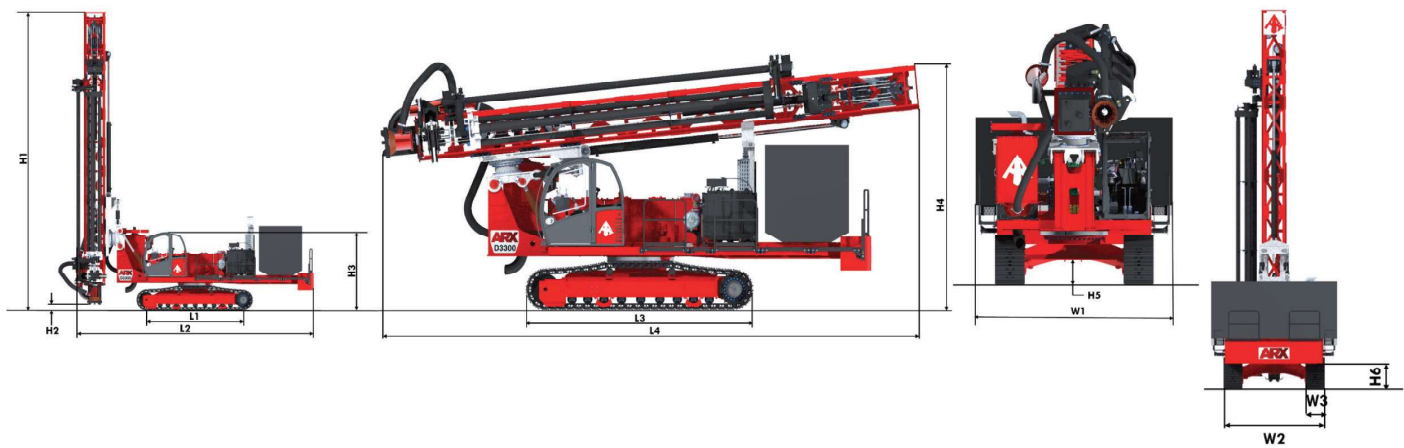
Description	UOM	Specification
WORKING RANGES		
Hole diameter	Mm / inches	152 to 203 / 6 to 8
Hole Depth (Multi pass)	m / feet	24 / 80
Drill Rod Diameter	Mm / inches	127 / 5
		140 / 5 ^{1/2}
Mast Length	m / feet	11.2 / 36.75
Hole depth (Single pass)	m / feet	6 / 20.
		Travel of Rotary head is 7.05 / 23.12
Rod changer		Lazy Susan type, 3 rod carousel fitted with hydraulic swing and indexing & travel lock functions.
ENGINE		
Make and Model		Volvo Penta TAD542VE /
		Cummins QSB 6.7 (BS IV)
Gross Rated horsepower @ 2200 rpm	hp / kw	Volvo: 218 / 163
		Cummins: 225 / 169
UNDERCARRIAGE		
Type		Heavy-duty, Triple-grouser, Long Undercarriage
Width	Mm	600
Number of rollers	Nos.	Shoes on each side: 57; Bottom Rollers: 9 ;Carrier Rollers: 2
Gradeability	%	60% (30.94°)
Ground Pressure	kg-sqcm / kpa	0.69 / 69
HYDRAULIC SYSTEM		
Circuit Type		Negacon system with summation control and electronic power limiter
Pump Type		Heavy tandem Axial piston pump and Dedicated pump for Pilot operation.
Pump Pressure	Bar	350
Hydraulic Pump Flow Capacity	lpm	470
DERRICK / MAST TYPE		
Lattice boom type mast construction for high rigidity, ample space for service access.		
Guideways are provided for the rotary head.		
Mast raising is fully hydraulic with counterbalance valves fitted to prevent the mast from falling in any interim condition. The mast raising cylinders are designed to lift the tower with ease with 1 rod in the head and 3 in the carousel.		
The centraliser opening is adequate for accommodating the requisite split type rod guides and can also be expanded for accommodating larger diameters at a later date.		
The derrick can be dumped till it rests on the ground so as to minimize stresses on the machine chassis, also there is a derrick rotation function to achieve vertical alignment on a side slope.		
The derrick also has angle hole capability.		
Optional rod guide to be fitted for full horizontal drilling		



ANGLE DRILLING		
Type		The machine is capable of climbing 60% grade (30.94°) on all sides with derrick lowered. With the tower raised, the operator has to balance the machine on steep grades. The travel functions and raising and lowering of the derrick is fairly rapid.
HOISTING CAPACITY		
Design		Hydraulic Cylinder Driven Steel Rope System with Velocity ratio of 3
Maximum Pull Down Force	Kg / lbs	9000 / 19836
Maximum Pull Up Force	Kg / lbs	12800 / 28211
Maximum Pull Down Speed	mpm/ fpm	15
		49
Maximum Pull Up Speed	mpm	33
ROTARY HEAD		
Type		The rotary head is a heavy duty fabricated type with Air/Water Swivel with 2 Gerotor type motors with a spur gear reduction and shock subs. The output spindle has a sub-spindle with optional BECO / API thread on the rod end.
		The rotation head torque is 1000 kgm at 100 rpm rotation speed.
No. of Motors	Nos.	2
Type of Motor		Gerotor
Reduction		3.15
Rotation head speed	rpm	100 rpm
Rotation head torque	kg-m	1000
	lbs-in	86,771
DUST COLLECTOR		
Type	Cyclone type pre-cleaner with cartridge type air filters to ensure NVE type dust prevention and suppression.	
	A wet type water injection system to spray water with a water injection pump with a capacity of 10 gpm	
	(37.9 lpm) has been provided along with a tank of adequate capacity (800 l) for operating 2 shifts.	
OPERATOR ENVIRONMENT		
Cabin	Ergonomically designed, fully enclosed cabin with HVAC system.	
Operating Controls	The cabin is fitted with an ergonomic seat with seat-belt, HVAC system, with Emergency stop switch, complete hydraulic disengagement lever in case the operator needs to leave the machine with the engine on.	
Display	There is a CAN type electronic display which will provide all parameters from both compressor and drill.	
COMPRESSOR		
Type		Screw Type Compressor
Capacity	Cfm/psi	1100/300
ELECTRICAL SYSTEM		
DC	Volts	24 V
Batteries	Nos.	2 nos, 100 Ah, Maintenance Free
Work lights		5 nos. LED type Plus one LED maintenance light near engine
Alternator		24 V dc / 110 amps
Warning lights / Alarm		Travel alarm, Strobe/Beacon light on cabin.

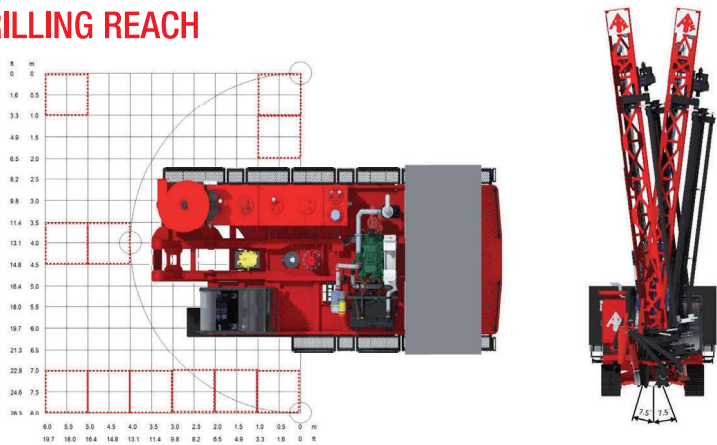


OVERALL DIMENSIONS*



PARAMETERS	UOM		DIMENSIONS
Height- Mast up	mm	H1	11180
Height- Front Bottom stop to ground	mm	H2	224
Height- Ground to Cab top	mm	H3	2954
Height- Mast down	mm	H4	4890
Height- Undercarriage to ground	mm	H5	460
Height- Counterweight to ground	mm	H6	763
Wheelbase	mm	L1	3845
Length- Mast up	mm	L2	10120
Overall length of Crawlers	mm	L3	4640
Length – Mast Down	mm	L4	11000
Width- Overall	mm	W1	3945
Overall width of Crawlers (without extension)	mm	W2	3180
Width- Track Shoe	mm	W3	600
*All dimensions are approximate, based on standard machine configuration			

DRILLING REACH



ABOUT ARX

At Arx, we believe in demanding more. More from ourselves and our machines.

Our collaboration with global technology leaders in fields such as Hydraulics, Driveline, Electronics and Fabrication enable us to create products that exceed expectations. With these international collaborations we bring overseas technology together with local expertise to give you the best of both worlds.

The Arx brand includes a complete range of motor graders, blast hole drill rigs and dust suppression systems that are built to meet any requirement.

The Indital branded products include forklifts, empty container handlers, loaded and empty reach stackers, aircraft towing trucks and pick/carry cranes. Indital is a 34 year old brand leader in cargo handling equipment in India.

At Arx the primary objective is to bring end-to-end services from application mapping, design and prototyping to produce state of the art products while optimizing the time-to-market.

In addition to all this, Arx is also an authorized dealer for sales and service for HIAB products in India.

The company has a manufacturing unit in Naraspura, Kolar that is certified under ISO 9001:2015.



Embracing the 'Make in India' initiative, our company takes pride in contributing to the nation's growth by locally manufacturing heavy machinery. Aligned with the government's vision, we've established a robust ecosystem fostering innovation, generating employment, and fortifying the domestic manufacturing sector. Our commitment to 'Make in India' is more than rhetoric; it's a cornerstone of our philosophy. Every grader, forklift, reachstacker, drill rig, and dust suppression system we produce adheres to stringent international standards, with globally proven aggregates, crafted with precision and expertise within our country. This approach not only supports local communities and businesses but also showcases the inherent capabilities of Indian manufacturing on a global stage. We dedicate ourselves to not just building machinery but to building a future where **India stands tall** as a hub for high-quality heavy equipment production.



Mining & Construction
Equipment Pvt. Ltd.

Arx Mining and Construction Equipment Private Limited.

Plot No 3 (Part 1) KIADB Narasapura Industrial Area, Kolar, 563133, Karnataka, India.

email: sales@arxmc.com | www.arxmc.com

Published by Arx Mining and Construction Equipment Private Limited , © Arx 2023.

Indital and Arx are registered trademarks in India and certain other jurisdictions.

All rights reserved. No part of this publication may be copied or reproduced without permission of the copyright owner. Illustration and images in the brochure are indicative and may show optional attachments and features. We reserve the right to make changes to the specifications and design without prior notice.