



THE HURRICANE ECO-WALL

Company Name
Champagne Edition Inc.
T/A Eco-Flex

Address:
57425 Range Road 253, Sturgeon
County, AB, Canada T0G 1L1

Toll-Free Phone
1-866-326-3539

Fax
1-780-961-3277

E-mail
info@eco-flex.com

Website
www.eco-flex.com



FROM THE PRESIDENT

Making the world greener through recycled rubber.

From the first product, the Cozy Cow Mattress, an antibacterial, antifungal mat made from the recycled tires, Champagne Edition Inc. has grown into an environmentally-friendly, international industry leader in the manufacturing of high-value, high-quality wares made from recycled rubber for commercial, industrial, residential and agricultural applications.



35,000
square-foot
plant



25 years
experience



50 million
recycled tires



endless
awards

We are aiming to become a pre-eminent manufacturer of value-added, end-use, innovative products, made from 100% recycled rubber and to ensure all recyclable rubber is utilized in the most valuable manner for the environment and the world.

By continuing to create awareness and demand for the company's high-caliber rubber surfacing products, Champagne Edition is one step closer to converting rubber crumb into a commodity, rather than a century-old problem. And to that end, our company, with up to 50 employees, operate out of a 35,000 square-foot plant - use 11 million pounds of material per month, equal to 500,000 tires monthly or 6 million tires a year.

Champagne Edition's growth is a testimonial to the company's ability and expertise to develop quality, environmentally-friendly, high-value, end-use recycled rubber products.

Mr. Alan Champagne



DETAILS:

Size:

10' L x 2' W x 3" (per panel)

Weight:

410 lbs (per panel)

Sound Transmission Class (STC): 37

Wind Load: 150 mph

Colors: (Actual colors may vary)

Black, Grey, Brown, Sandstone, Redwood

Applications:

Privacy, Sound absorption, Traffic safety

Shipping:

FOB Manufacturer

*13 tires are recycled
to make one panel!*

ADVANTAGES:

- Provides privacy and reduces **the noise level** of traffic.
- Designed to be **visually appealing**.
- Preserves aesthetic values and scenic vistas.
- **Tongue and groove joints** for easy installation and added strength.
- **Easily place, relocate and remove** as needed.
- Dual formed texture provides higher community acceptance.
- **Reinforced** with a patented rigid spine for added strength.
- Can withstand **150 mph** winds
- Made from **100% Recycled Rubber** tires makes them a durable, long-lasting solution.

COLORS:



Champagne Edition Inc. T/A Eco-Flex
57425 RR 253, Sturgeon County, AB, Canada T0G 1L1
info@eco-flex.com | www.eco-flex.com
1-866-326-3539

INSTALLATION

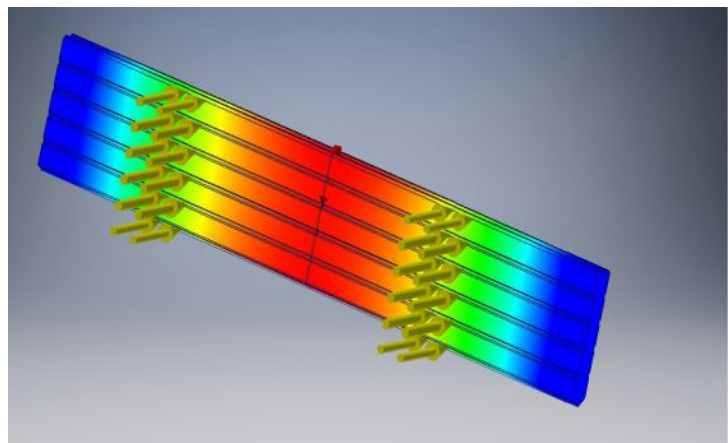
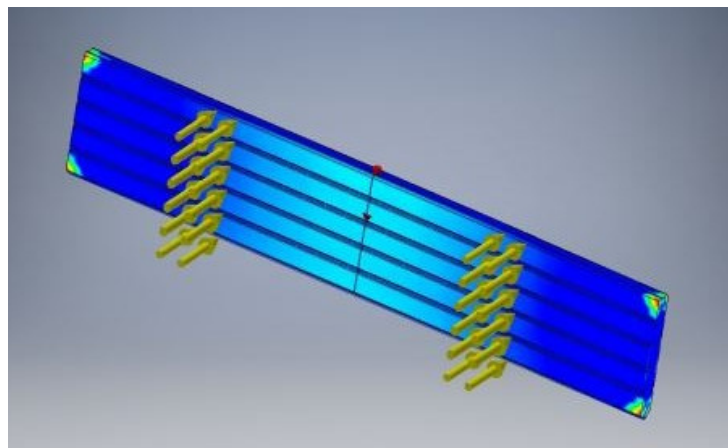


1. Dig post holes
2. Set posts (use 10' + 1/2" spacers between posts) the panels are 10' long and the extra 1/2" will allow for any expansion that may happen in high temperatures with the rubber.
3. Fill holes with concrete, center posts and ensure posts are level. Let cement set. (you may want to bracket the posts while the cement sets to ensure they stay level)
4. Plumb a level line (from first post to the last post) at lowest level possible. Install L-brackets at this lowest line (ensure this line is level as it is quite noticeable if it isn't when panels are installed)
5. Strap panel upright on forks of the lifting device (forklift, loader, etc.). Lift until bottom of panel is at top of post. Install HD Eco-Wall panels by simply sliding down into the channels of posts (groove on bottom, tongue on top) and rotate next panel accordingly so pattern doesn't run same as panel below.

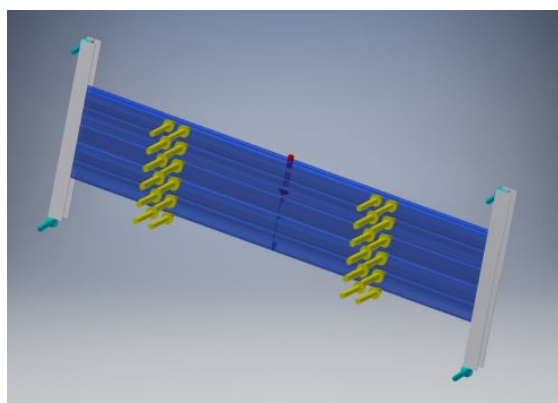


HURRICANE ECO-WALL TEST RESULTS

The wind,
noise and
fire element
analysis.

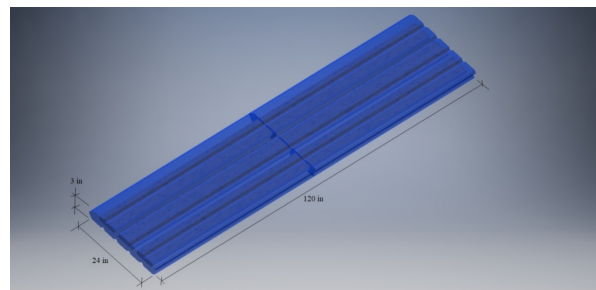


Stress in
Thermoplastic
Resin /
Deflection



Finite element
analysis (FEA)

Hurricane Eco-Wall panels
will sufficiently resist wind
load of 150 MPH / 241.4
km/h.



3 inch mat assembly - complete

Acoustic Properties

According to the original request by Eco-Flex, the main purposes of this acoustic study is to 1) discover if a current 3 inch mat will be sufficient for utilization as a sound barrier and 2) to compare transmission loss (TL) of a mat to common sound barriers constructed from concrete, wood, steel and other materials. This study was not to concentrate on the actual physical height of sound barrier, but rather concentrate only on the ability of the mat to reflect and absorb sound energy.

One of the most important parameters of the sound barrier is the transmission loss. When sound is striking a sound barrier, it will be partially reflected, and also partially absorbed. The remaining sound energy will then be transmitted through. The goal is to minimize or completely remove this transmission component.

WIND LOADING & DIRECT LOAD

150 mph / 241.4 km/h. 350 lbs / 158
kg minimum

TRANSMISSION LOST

35+ dB

SOUND TRANSMISSION CLASS (STC)

41

SURFACE DENSITY

58.59 kg/m² - 12.00 lbs/ft²

Certificate of Warranty

1. Champagne Edition Inc. provides this limited warranty for its' manufactured Hurricane Eco-Wall® product against manufacturing defects in material for a period of 25 years from the date of sale. This **excludes** all product purchased as seconds.

2. Champagne Edition Inc. warrants that in the event of a manufacturing defect in any Specified Product covered by this Limited Warranty, which such Specified Product has been installed and maintained in accordance with Champagne Edition Inc. specifications, technical specifications and/or technical bulletins, Champagne Edition Inc. sole liability shall be to elect either of the following in Champagne Edition Inc. sole discretion.

- a. To repair the Specified Product(s) proven to be subject to the manufacturing defect; or
- b. To ship replacement product reasonably equivalent to the Specified Products proven to be subject to the manufacturing defect; or
- c. To ship an overlay solution in which alternative product(s) (not necessarily identical in type, thickness or otherwise) is/are installed on top of the Specified Product(s) proven to be subject to the manufacturing defect; provided, however, that if no event shall any manufacturing defect affecting only aesthetics and not performance of any Specified Product(s) require Champagne Edition Inc. to provide anything other than a reasonable aesthetic resolution. Under no circumstances will Champagne Edition Inc. be held responsible for water damage; Champagne Edition Inc. Eco-Flex® product line is not a "waterproofing" material.

LIMITATIONS AND DISCLAIMERS

CHAMPAGNE EDITION INC.'S LIABILITY HEREUNDER SHALL BE LIMITED AS SPECIFIED ABOVE, WHICH SHALL BE THE SOLE AND EXCLUSIVE OBLIGATION OF CHAMPAGNE EDITION INC. HEREUNDER. UNDER NO CIRCUMSTANCES WILL CHAMPAGNE EDITION INC. BE LIABLE FOR LABOUR OR ANY OTHER COSTS INCURRED IN CONNECTION WITH THE REPAIR, REMOVAL, SHIPMENT, INSTALLATION OR REPLACEMENT OF ANY SPECIFIED PRODUCTS COVERED BY THIS LIMITED WARRANTY. THIS LIMITED WARRANTY IS IN LIEU OF ALL OTHER WARRANTIES, EXPRESSED OR IMPLIED, INCLUDING, BUT NOT LIMITATION ANY WARRANTY OF MERCHANTABILITY, HABITABILITY OR FITNESS FOR A PARTICULAR PURPOSE, AND ALSO IS IN LIEU OF ANY OTHER OBLIGATIONS ON THE PART OF CHAMPAGNE EDITION INC. (CONTRACTUAL, TORT OR OTHERWISE). THIS LIMITED WARRANTY CONSTITUTES THE ONLY WARRANTY MADE BY CHAMPAGNE EDITION INC. AND IS A COMPLETE AND EXCLUSIVE STATEMENT OF ITS OBLIGATION. CHAMPAGNE EDITION INC. MAKES NO REPRESENTATIONS, EXPRESSED OR IMPLIED, NOT SPECIFIED HEREIN. ANY AND ALL REPRESENTATIONS, PROMISES, WARRANTIES OR STATEMENTS BY CHAMPAGNE EDITIONS INC.'S EMPLOYEES, REPRESENTATIVES, AGENTS, DEALERS, OR DISTRIBUTORS THAT DIFFER, ENHANCE, AMEND OR EXTEND IN ANY MANNER FROM THE TERMS OF THIS WRITTEN LIMITED WARRANTY SHALL BE OF NO FORCE OR EFFECT. NO REPRESENTATIVE, AGENT OR EMPLOYEE OF CHAMPAGNE EDITION INC., OR ANY OTHER PERSON, IS AUTHORIZED TO ASSUME FOR CHAMPAGNE EDITION INC. ANY ADDITIONAL LIABILITY OR RESPONSIBILITY WITH CHAMPAGNE EDITION INC. PRODUCT EXCEPT AS DESCRIBED ABOVE.

3. Neither delivery of alternative product(s), nor any repair(s), nor any overlay(s) shall be deemed to extend or prolong the period of terms of this Limited Warranty. This Limited Warranty shall be void if the Specified Products are repaired or replaced by Persons other than those who authorized and approved by Champagne Edition Inc. to perform such work.

4. Without limiting the foregoing and subject to the particular type of Specified Product involved, this Limited Warranty shall not cover damage to the Specified Product(s) caused in whole or in part by any of the following:

Usage for which the Specified Product(s) was not designed; Faulty construction of the building and/or sub-base;
Failure of the other contractors to adhere to their specifications; Failure to install correctly moisture and/or vapour barriers;
Damage resulting from abnormal use, abuse i.e. climbing/ swinging on gates, neglect or accident. Damage resulting from an act of nature. Accelerated rot of wood components due to excessively wet soil conditions. Standard mill marks, gradual discoloration from black mold, fading, cracking, twisting/warping or shrinking of fencing materials that are affecting the fence aesthetically i.e. causing gaps or minor splinters to appear.

5. Specifically, excluded from this Limited Warranty is any Specified Product which has been subjected to neglect, abuse, and excess wear in pivoting areas and high stress areas. In addition, this Limited Warranty does not cover damage due to stains, or damage resulting from any intentional misuse of products; lustre reduction from use; normal wear and tear, natural expansion and contraction of rubber, gradual changes in colour shading due to exposure to sunlight. Differences in colour/shading variations with any actual samples, printed illustrations and/or previous productions are also excluded under this Limited Warranty.

6. This Limited Warranty shall not apply to Specified Products that have been discontinued or Specified Products in a discontinued colour, the time of sale, or to goods sold as seconds or B grade. This Limited Warranty shall become void if the proper Champagne Edition Inc. adhesive or Champagne Edition Inc. recommended adhesive has not been used on the installation, if the Specified Product has not been installed by certified installers, or if the Specified Product has not been maintained in accordance with all of Champagne Edition Inc. specifications.

7. As a condition precedent to any of Champagne Edition Inc. obligations hereunder, the claimant must provide Champagne Edition Inc. with written notice within thirty (30) days of the discovery of any alleged defect and supply Champagne Edition Inc. with the details concerning the alleged defect. After notification, an authorized Champagne Edition Inc. representative shall have the right to inspect and verify the alleged defect. Promptly thereafter, Champagne Edition Inc. will, if it determines the Specified Product(s) to be defective, at its option, elect as provided in paragraph 2 above. If shipment of alternative product(s) is elected in accordance with this Limited Warranty, the same product, colour and embossing of Champagne Edition Inc. product covering will be supplied to the extent then reasonably available. Champagne Edition Inc. will make reasonable efforts to match any of its standard colours for such alternative product(s) if, at the required time, such production can be combined with a production run of the same product and colour, but Champagne Edition Inc. cannot guarantee to match the exact colour shading, or such alternative product(s) with the Specified Product(s).

8. Receipt and installation of any and all Specified Products constitutes acceptance of this Limited Warranty and all of its terms, conditions, limitations and disclaimers.



30+ YEARS EXPERIENCE

"We are aiming to become a pre-eminent manufacturer of value-added, end-use, innovative products, made from 100% recycled rubber and to ensure all recyclable rubber is utilized in the most valuable manner for the environment and the world."



- Alan Champagne CEO

