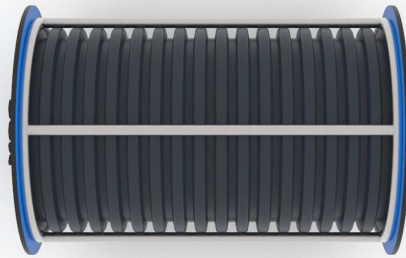


Tuba Spring Rocker



Technical Data



DIMENSIONS

1.24 x 0.84 m



SAFETY ZONE

4.24 x 3.84 m



HEIGHT

1.24 m



FREE-FALL HEIGHT

0.5 m

Conforms to: BS EN 1176-1+A1:2024

Tuba Spring Rocker

Materials & Construction

Steel profiles & tubes: galvanised & powder-coated

Pipe: double-wall PP

Panels: colourful HDPE

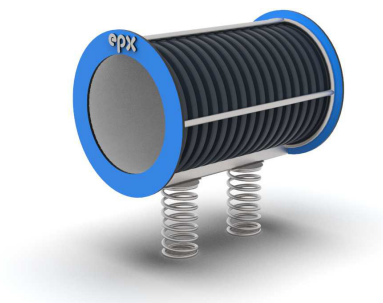
Spring: 20mm dia, powder-coated steel

Warranty: 48 months unit / 10yr HDPE / 15yr structural

In accordance with BS EN 1176-1+A1:2024, this product requires impact-absorbing surfacing appropriate to its free-fall height.

The equipment shown is a computer visualisation only; the actual product will look similar. Colours may vary from those shown. Construction materials can be tailored to the customer's requirements. Dimensional tolerance +/- 5cm.

Additional Views



Why Choose This Product

A sculptural tunnel rocker that children climb through and ride, encouraging crawling, climbing and rocking.

- Tactile tunnel form for climb-through play
- Double-wall PP body on twin springs
- Certified to BS EN 1176-1+A1:2024 for public playground safety