

DRAUGHT MEASUREMENT

Provides You with Accurate Data on Your Vessel's Floating Position and You Always Know Your Limits

Hoppe Marine Draught Measurement solutions monitor the draught of the vessel and determine draught values precisely at perpendiculars and draught marks.

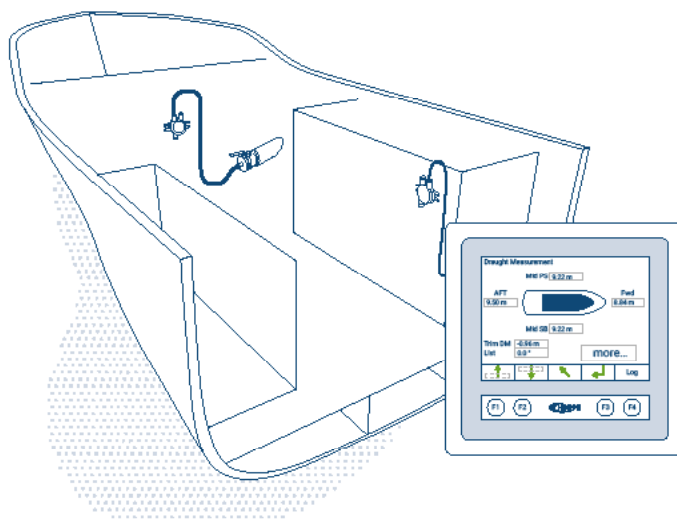
The standard Draught Measurement system configuration includes four measuring points with pressure sensors, located at bow, stern, mid ship port and mid ship starboard.

The hydrostatic pressure sensors HCG 2011 and HCG 4011 have been especially developed to detect the levels in a wide range of liquids with different media properties. The pressure sensors of the HCG series can be configured to the required measuring range, housing material and process adaptor.

The pressure sensor HCG 2011 provides a signal of 4 – 20 mA and allows customised measuring ranges, adjustable via HART protocol. The pressure sensor HCG 4011 is designed with a digital serial BUS interface, which allows cost saving cable loop installations.

KEY FEATURES

- Precise draught calculation at perpendicular and draught marks
- Trim and heel, sagging and hogging information
- Significant installation cost savings by smart welding block arrangements
- Reliable and accurate in house designed sensors
- Experience on more than 2,800 vessels worldwide
- Made in Germany with competitive market price
- Approved by major classification societies



OUR PRODUCT RANGE

CONTROL SYSTEM

- Valve Remote Control
- Anti-Heeling
- FLUME Box Tank — Roll Damping
- INTERING U-Tank — Roll Damping
- Dock Control
- Floating Condition Control

MEASURING SOLUTIONS

- Tank Content Measurement
- Bunker Management
- Draught Measurement
- Dynamic Draught and Floating Monitoring
- Maihak Shaft Power Meter
- Maihak SHaPoLi
- Fuel Consumption Measurement
- Electronic Inclinator

INFORMATION SERVICES

- Performance Monitoring
- Crew Connect
- Fleet Connect

FLEET SERVICES

- Technical Support
- Spare Parts
- Service On Board
- Retrofit

HAMBURG

Headquarter

Kieler Str. 318
22525 Hamburg
Germany

BUSAN

Hoppe Korea Co. Ltd.

No 485-3, Gu Pyeong-Dong
Sa Ha-Gu 604-866 Busan

SHANGHAI / DALIAN

Hoppe China Co., Ltd.

Shanghai Office
German Center, Room 708, Tower 1
88 Keyuan Road, Pudong District
201203 Shanghai

Dalian Office
No. N305 Room, Dalian Construction Holding Building
Quanshui A4-43A, Ganjingzi District
116000 Dalian

SINGAPORE

Hoppe Singapore Pte., Ltd.

11-14, Cendex Centre
120 Lower Delta Road
Singapore 169208

AMERICA

Hoppe America INC.

Camp Hill
17011 Pennsylvania
USA

