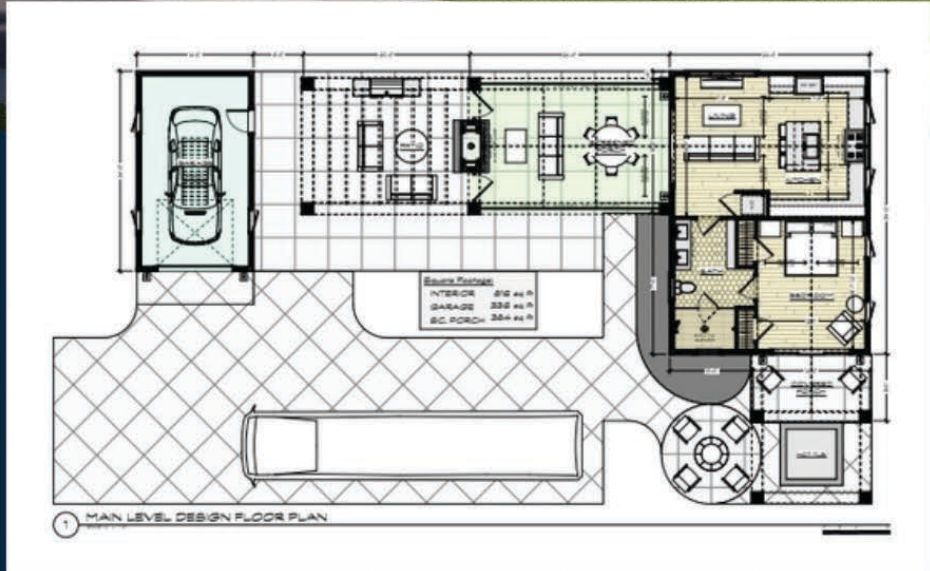


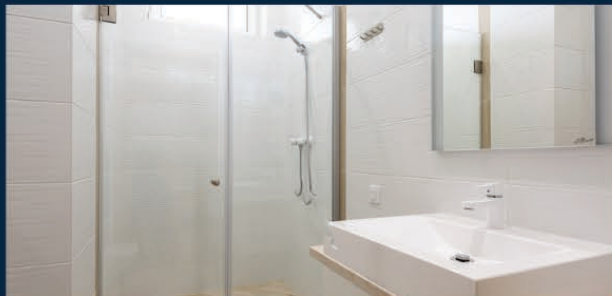


# SUGAR MAPLE



816 sq. ft   1 Bed   1 Bath   Optional

This meticulously designed Visbeen Architects layout seamlessly integrates indoor and outdoor living, offering a contemporary upgrade from traditional gable roof bungalows. Optional dormers will add light to the vaulted ceiling. The primary bedroom boasts dual closets, dual sinks, and a luxurious shower, while the kitchen's proximity to the outdoors facilitates effortless entertaining. Whether serving guests in the screened porch or considering an outdoor kitchen addition, the double-sided fireplace extends warmth to both the patio and optional pergola areas. The flexible garage options and the possibility of a hot tub near the private suite create versatile spaces for relaxation. With ample room for landscaping and pet-friendly considerations, including 800 ft.<sup>2</sup> indoors and extensive covered outdoor areas, this residence epitomizes refined living in the heart of northern Michigan, ideal for year-round enjoyment.





# SUGAR MAPLE



Shown with optional single stall garage, pergola and outdoor living space. Whether you are looking to expand your entertainment space or add privacy with a robust landscape package, our design build team can accommodate any improvement you have in mind.



We have partnered with Visbeen Architecture, who is a world class design firm. They have created some of our amazing standard designs shown here. If you would like them to design one of a kind improvements, they can accommodate any custom project. The exciting design process is interactive and fun. In just a few months we'll have buildable plans and can begin your project.

Once you have selected your property, ask your salesperson or our Design Build Team about our complimentary 2-hour design appointment with Wayne Visbeen. Bring your wildest dreams and you'll see a design come to life before your eyes.



Wayne Visbeen  
PRINCIPAL: VISBEEN ARCHITECTURE

Schedule  
Your Design  
Consultation  
Today.

