

# QUICK START GUIDE COMINO GRANDO

VER. 2.0.2



## WELCOME TO COMINO GRANDO MACHINE!



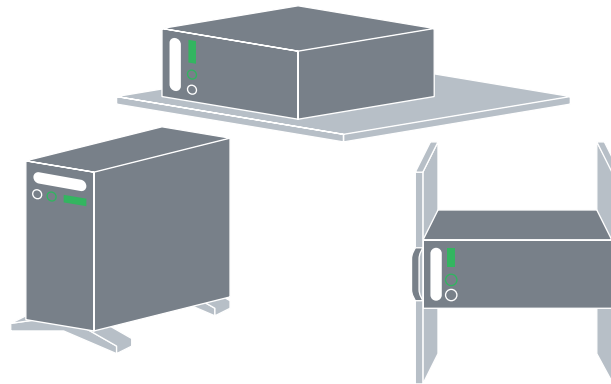
### An important note

Please read this document and safety information in the Comino Grando Machine user guide at <https://grando.ai/rm> carefully before you first use Comino Grando Machine.

### Installation

Attach rack mount handles kit, rails or legs. Place the device in a 4U rack space or on a horizontal surface (vertically or horizontally, depending on whether you use rails or legs), so that the coolant reservoir is on the top (for vertical placement) or on the left (for horizontal placement). These are the only placement options available.

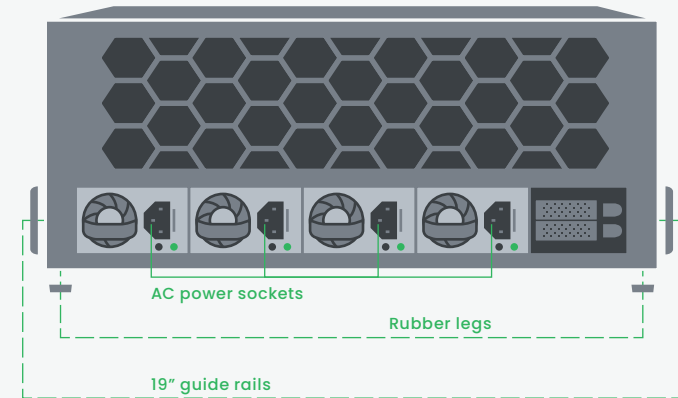
**Warning: If the device is placed in the other way the cooling system will fail and warranty will be void.**



### Starting Up

Connect all AC power cables to each of the power supply units of Comino Grando Machine.

After connecting the power supplies to the AC mains, Grando device will automatically turn on followed by self-diagnosis sequence and ending up in a stand by mode. Check that all the status LED on the PSUs are GREEN. Now it is ready to be turned on! Otherwise contact Comino Support team.



**Attention: System autostart after emergency shutdown is disabled by default. Enable POWER LOSS RECOVERY in the MENU > SERVICE > PW LOSS RECOVERY.**



See detailed instructions in the user manual at <https://faq.comino.com/controller/menu#power-loss-recovery>

## HOW TO USE CONTROL BUTTONS

PRESS  
HOLD

1

<<PREV  
CANCEL

2

NEXT>>  
SUBMIT

## Turning ON

To turn ON the GRANDO device PRESS and HOLD BOTH buttons on the front panel.

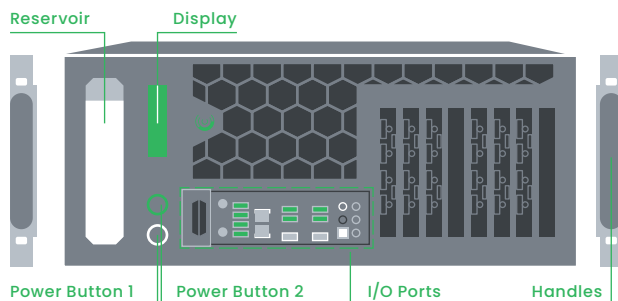
## Shutting DOWN

To shut down the device PRESS and HOLD BOTH buttons. Press NEXT>> (PB2) button to submit shut down.

## Coolant Level

The system comes pre-filled. The sticker on the reservoir should be removed. Please monitor the coolant level and use the coolant included in the kit to refill the system in the future. If your Grando is equipped with a Coolant Level Sensor you will see a warning on the front panel display when the level drops to the minimum.

**If you don't have the coolant, contact Comino for support. Improper coolant will damage the cooling system and warranty will be void.**



See detailed instructions on how to check the coolant level and refill in the user manual at <https://faq.comino.com/grandorm/maintenance-and-cleaning>

## MANAGE NOISE AND PERFORMANCE LEVEL

Comino Grando Machine can work in different cooling modes, depending on the ambient temperature and workload: Super Silent, Silent, Normal, Max Performance, and Custom. The pre-setup profile is stated in the device passport under Controller Default Profile.

When general screens of normal operation (temperature, status, rotation) are displayed, press and hold <<PREV button to access Temperature Profiles menu. The active temperature profile will be shown.

To change the active profile hold the NEXT button for 2-3 seconds to enter the MENU. Select SERVICE: TEMP PROFILE by using NEXT and PREVIOUS buttons, hold NEXT button to open the selection menu. Submit the chosen profile by holding NEXT button.



TEMP PROFILE: 3  
NORMAL

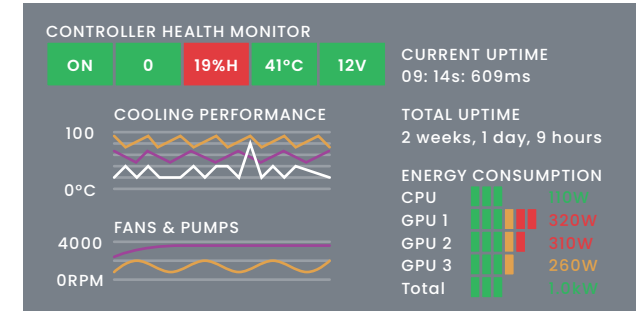


See detailed instructions on how to set up temperature profiles in the user manual at <https://faq.comino.com/controller/menu-serv>

## COMINO MONITORING SYSTEM (CMS)

Grando machine comes with the pre-installed platform for real-time monitoring.

It combines hardware components (Comino Controller Board with sensors) that gather hardware and environment data, with the software utility to analyze this data and provide the insights to the user.



CMS can be reached from the Desktop via a shortcut. In case you reinstalled the OS or you want to setup a remote monitoring for one or several devices, please refer to the instruction below.



See detailed information about the Comino Monitoring System in the user manual at <https://faq.comino.com/rmmonitoring>



**Support**  
Most relevant and full version on the user manual could be found at <https://grando.ai/rm>

Email us [support@comino.com](mailto:support@comino.com)



Copyright 2024 Comino, Grando. All rights reserved.