



TUNE®

Grab Handle Installation Guide

REQUIRED TOOLS

Tool:

6mm Allen Key

Torque Wrench W/ 6mm Bit

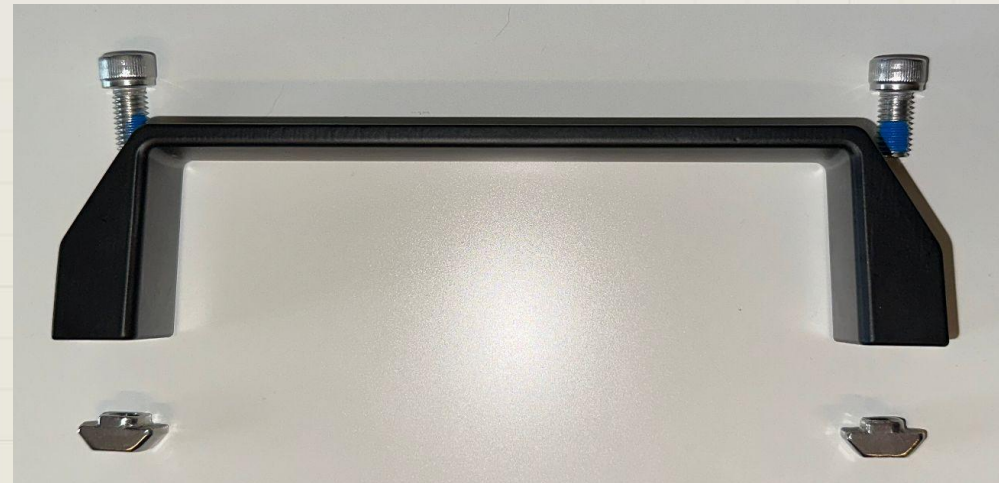


Grab Handle Kit Contents:

[2x] 6mm Hex M8 Bolts

[1x] Grab Handle

[2x] M8 Hammer Nuts



Prepare Handle:



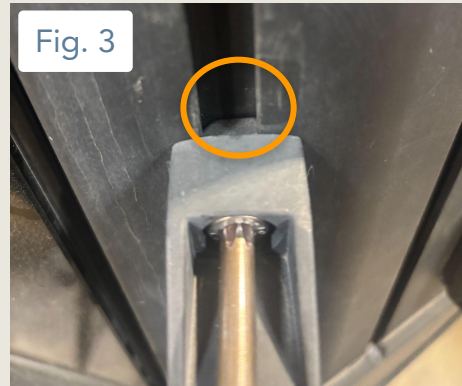
1. The grab handle consists of two bolts, two hammer nuts, and the grab handle.
2. Insert the bolts through the holes on the grab handle.
3. Thread the hammer nuts onto the bolts 1-2 turns.
 - a. The hammer nut should be loose still.
4. Orient the hammer nuts parallel to the length of the handle (Fig. 1).

Placing and Securing the Handle

1. Position the handle in the desired location and insert the hammer nuts (Fig. 1).
2. Use the 6mm Allen Key to tighten the two bolts (Fig. 2).
3. While tightening, ensure that the hammer nuts turn perpendicular to the length of the handle.
4. If the hammer nut will not turn...
 - a. Ensure the handle is centered in the t-track.
 - b. Loosen the bolt and repeat until the hammer nut is properly turned.



Checking Hammer Nuts



1. Ensure that the hammer nuts are properly engaged in the t-track.
 - a. NOT properly engaged (Fig. 1 & 2).
 - b. Properly engaged (Fig. 3 & 4).
2. Once the hammer nuts are properly engaged with the t-track, torque the two bolts to 12 lb•ft using the torque wrench.
3. The install is now complete!

Safety Disclaimer and Acknowledgment

By using the grab handle and its associated components, you acknowledge and agree to adhere to the following safety instructions and terms:

Proper Installation and Hardware Tightening:

All hardware must be adequately tightened to ensure secure installation of the grab handle. Loose hardware may lead to improper installation, resulting in potential damage or injury.

Ensure that all fasteners are checked and tightened before use of the grab handle. Periodic inspection is recommended to maintain safe operation.

Hammer Nut Engagement:

Hammer nuts must be fully engaged in the T-track to ensure the grab handle remains securely attached. Failure to fully engage the hammer nuts may result in the grab handle detaching, leading to potential accidents, property damage, or injury.

Responsibility and Indemnification:

By using this product, the user agrees to indemnify, defend, and hold harmless the manufacturer, distributor, seller, and their affiliates, employees, and agents from any claims, damages, injuries, or losses that result from improper use, installation, or failure to follow the provided safety guidelines.

This indemnity includes any legal costs and expenses incurred in defending against such claims, including those related to negligence, misuse, or failure to adhere to the product's instructions.