



# 2025 ANNUAL REPORT & DONOR DIRECTORY

# TABLE OF CONTENTS

2	Letter from Chair of the Board and President & CEO
3-6	2025 Campaign
7-8	ARTini: Havana Nights
9-19	Grantmaking
20	Financials
21-22	Visionary Spotlights
23	Corporate, In-Kind and Individual Donor Listings
29-30	Board of Directors and Staff Listings



deadCenter Film Festival Screening;  
(Cover) Oklahoma Contemporary Arts Center



## 2025 YEAR IN REVIEW

This past year was one of record-breaking impact, growth and renewed commitment to the arts in central Oklahoma. Thanks to the generosity of donors, volunteers and community partners, we are proud to share several milestones that made the 2025 fiscal year a landmark one for Allied Arts.

With your invaluable support, Allied Arts raised more than \$5 million through a number of fundraising efforts primarily the 2025 campaign which raised \$3.88 million, the most in our 54-year history. Led by chairs **Sally & Jeff Starling** and honorary chairs **Christian Keesee & Larry Keigwin**, the campaign garnered donations from more than 3,000 corporate, foundation and individual donors, with the latter accounting for nearly half of total campaign giving. These funds will be granted to local arts and cultural nonprofits, helping ensure that world-class performances, arts education and community programs remain accessible to all.

We also took important steps to strengthen the future outlook of Allied Arts. Through a comprehensive assessment funded by the **Kirkpatrick Family Fund**, we worked with a national nonprofit consultant to interview fellow united arts funds and survey local arts nonprofits to ensure that our grantmaking, services, fundraising and stewardship aligns with the evolving needs of the organizations and communities we serve.

The year was also filled with opportunities to celebrate and connect through the arts. ARTini, our signature martini tasting event mixed with an art auction and live arts experiences, reached new heights as the most successful in its history. Led by **Kendra Alexander, Leah Roper** and a committee of 70 young professionals, ARTini: Havana Nights brought together more than 900 art lovers for delectable dishes, specialty sips and local art. In addition, we launched monthly board outings to experience firsthand the incredible work of our member agencies, deepening our collective appreciation for the transformative power of the arts.

None of these achievements would have been possible without the unwavering support of our donors, partners and advocates. Thank you for fueling creativity, strengthening our cultural community and ensuring that the arts continue to thrive for generations to come.

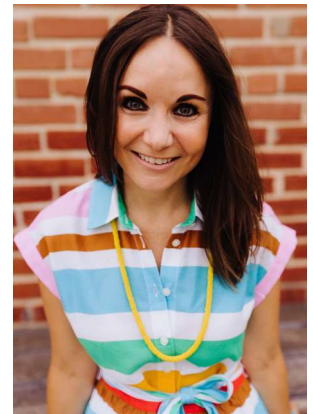
With gratitude,

  
Aimee Harlow  
Chair, Board of Directors

  
Sunny Cearley  
President & CEO



Aimee Harlow  
Chair, Board of Directors



Sunny Cearley  
President & CEO





**(Above) Campaign Chairs Sally & Jeff Starling join Honorary Chairs Christian Keesee & Larry Keigwin in front of *Cloud City* by artist Tomás Saraceno. (Below) The Starlings kickoff the Allied Arts 2025 Campaign at Science Museum Oklahoma.**





# 2025 CAMPAIGN

Chaired by **Sally & Jeff Starling**, Allied Arts launched its 2025 fundraising campaign on January 28 at **Science Museum Oklahoma**, bringing together more than 230 guests to celebrate the power of the arts in building community, quality of life and economic vitality. Guests enjoyed performances by **Oklahoma Youth Orchestras** and **Painted Sky Opera**, as well as interactive STEAM experiences from Science Museum Oklahoma.

Throughout the campaign, Allied Arts recognized **Christian Keesee & Larry Keigwin** as the 2025 Honorary Chairs for their visionary leadership and philanthropy on behalf of arts education and access, public art and creative spaces. On April 15, more than 200 supporters joined Allied Arts at **Oklahoma Contemporary** to celebrate the Honorary Chairs' impact with an event showcasing some of their "favorite things," including a mariachi welcome, a tap dance spotlight by **Metropolitan School of Dance**, and a flamenco performance by **SPARK! Creative Lab**.

By the close of the fiscal year, the Starlings announced a record \$3,881,700 raised – the largest total in Allied Arts' 54-year history. Thousands of individual donors, corporate and foundation partners, and workplace campaigns made this milestone possible. Notably, employee giving accounted for 21% of the total raised, with top participation from **Continental Resources, OG&E, City of Oklahoma City Employees, Devon Energy, American Fidelity**, and others. Our Visionary Donors (\$100,000+) included the **Chickasaw Nation, Kirkpatrick Family Fund, Devon Energy, OG&E, Glenna & Dick Tanenbaum, American Fidelity** and **Continental Resources**.

"The Allied Arts annual campaign means more than just reaching a financial goal. It is a testament to how deeply Oklahomans value creativity, expression and access to artistic experiences," said the Starlings. "Every dollar raised is a private donation, not public dollars, by individuals and businesses committed to the communities in which we live, work and play. And the donations make a difference, a difference allowing our neighbors to gain access to free and low-cost arts programs and experiences; a difference to students receiving vital arts education in their classrooms and afterschool sites; and a difference to communities supporting artistic excellence for all to enjoy."



(Above)  
Larry Keigwin and  
Christian Keesee address  
guests at the Honorary  
Chair event.

(Right)  
A mariachi welcome for  
Honorary Chair guests





Showcasing the next generation of  
Oklahoma artists at the Campaign Celebration

## 2025 CAMPAIGN CABINET

### Building Division

**Collins Peck**, Co-Chair  
**James A. Pickel**, Co-Chair  
**Betsy Brunsteter**  
**Blake Cherry**  
**Laure Majors**  
**Vicki VanStavern**

### Business Division

**David Woods**, Chair  
**Mark Burson**  
**Bruce Lawrence**

### Communications & Entertainment Divisions

**Christopher Lloyd**, Co-Chair  
**Steve Mason**, Co-Chair  
**Ashley Gockstetter**

### Energy Division

**Taylor Shinn**, Co-Chair  
**Tyler Bolton**, Co-Chair  
**Grant DeFehr**

### Financial Division

**Kati Christ**, Chair  
**Scott Inman**

### Healthcare Division

**Tracy Enloe**, Co-Chair  
**Suzanne Reynolds**

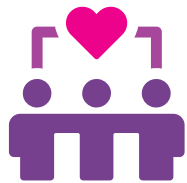
### Professional Division

**Kyle Impson**, Chair

### Members At-Large

**Hillary Farrell**  
**Peter Farrell**  
**Aimee Harlow**  
**Debra Kos**  
**Jill Trauschke**

## 2025 CAMPAIGN AT A GLANCE



**3,000+**  
donors



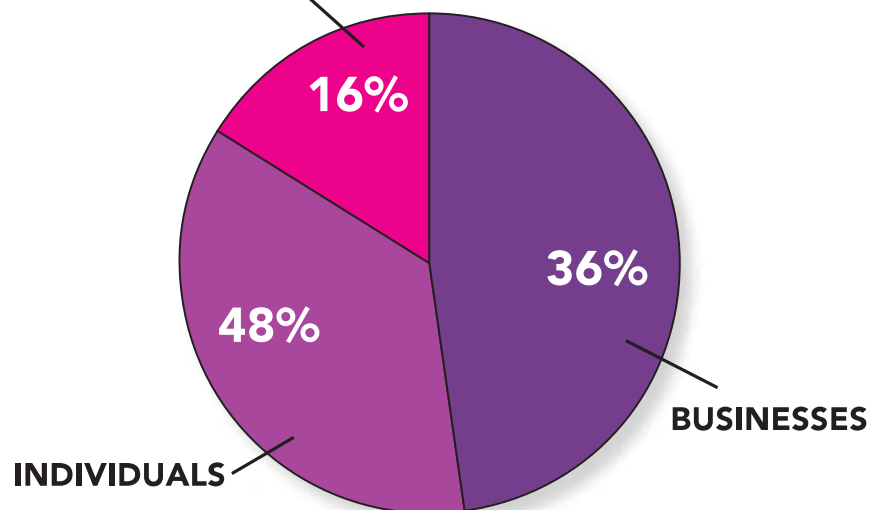
**\$3.88M**  
raised



**95**  
workplace  
campaigns

## 2025 DONOR BREAKDOWN

FOUNDATIONS



**\$1.81M** - 48% of all dollars raised - came from individual donations.

Workplace Giving contributed **\$833K**, from more than **1,800** donors – or **21%** of total giving.



# ARTini: Havana Nights

Allied Arts' young professionals group, Catalyst, hosted its most successful ARTini yet, raising \$265,000 in support of the arts. Held on May 17 at the **Oklahoma City Convention Center**, the event transformed the space into Havana Nights, complete with the energy, charm and vibrancy of Old Havana.

More than 900 guests, including donors, volunteers and artists, came together to enjoy custom martinis, experience Latin dance demonstrations and view an exhibition of 168 original works of art. Chaired by **Kendra Alexander** and **Leah Roper** with the support of a dedicated committee, ARTini 2025 was both a celebration of creativity and a powerful fundraiser for the arts community.



*(Clockwise from left) Ashley & Jeff Gockstetter; Guests bidding on artwork; Friends bringing the heat at ARTini: Havana Nights*

*(Opposite page) ARTini Co-Chairs Kendra Alexander and Leah Roper (second and fourth in front row) with Committee Members*





## PREMIER ENTERTAINMENT SPONSOR



## PRESENTING BAR SPONSOR



## RESTAURANT PARTICIPANTS

Deem Laow  
– Best ARTini  
Flint  
The Jones Assembly  
The National  
O Bar  
OKC Convention Center  
– Best Décor  
Paseo Grill  
Taco Empire  
– Best Food  
Tiny Bubbles Wine Bar  
The Winston  
– People's Choice





# ALLIED ARTS GRANTMAKING

Thanks to the generous support of our thousands of individual, corporate, public sector and foundation donors, Allied Arts awarded more than \$3.1 million to 48 local arts nonprofits last fiscal year in support of cultural programming, outreach into underserved areas, arts education in schools and COVID-19 relief aid.

## ALLOCATIONS

Reserved for the 25 Allied Arts member agencies, allocations are unrestricted grants, enabling recipients to invest the funds where they are most needed to advance their missions. With board approval, Allied Arts allocations are awarded by a committee engaged in a thorough review process, evaluating application materials, interviewing member agency leadership and hearing firsthand from program beneficiaries. Allocations are directed toward the advancement of organizational health and sustainability, youth and family outreach, and ensuring access and inclusion with the arts.

## EDUCATIONAL OUTREACH

Open to Allied Arts member agencies and other eligible cultural nonprofits, the Educational Outreach program supports the provision of arts experiences for Oklahoma schoolchildren with a focus on underserved, low-income and at-risk K-12 students. The grant program also funds outreach to veterans, hospitalized adults, developmentally disabled adults and families.

## CAPACITY-BUILDING

The Allied Arts Capacity-Building program supports the strengthening of cultural nonprofit infrastructures. Examples of funded projects range from organizational training, strategic planning and technology enhancements. Allied Arts member agencies and other qualified nonprofit arts organizations are eligible for capacity-building funding.

## COVID RELIEF FOR OKLAHOMA COUNTY CULTURAL NONPROFITS

District 2 Commissioner **Brian Maughan** and former Commissioner **Carrie Blumert** approved \$350,000 in ARPA funding to Allied Arts to provide critical assistance to Oklahoma County cultural nonprofits most negatively affected by the COVID-19 pandemic. The funding is helping the hardest-hit organizations in their efforts to rebuild and recover specifically by supporting revenue loss, investing in human resources, and creating new and expanding existing programs, particularly to increase arts access in underserved communities.





# 2025 GRANTS AWARDED

- Annual Allocation Grant
- Educational Outreach Grant
- Capacity-Building Grant
- ARPA Grant



(Top) ArtsUp! ceramic making

(Opposite page) Metro Youth Theatre *SpongeBob The Musical*

WHEN WE  
INVEST IN  
CREATIVITY,  
WE INVEST IN  
EACH OTHER.

## A to Z Productions

- \$5,000 | Martin Luther King Celebration Concerts
- \$5,000**

## Ambassadors' Concert Choir

- \$5,980
  - \$5,200 | Summer Music Camp
  - \$5,000 | Executive Director and Collaborative Pianist
- \$16,180**

## Arts Council Oklahoma City

- \$167,750
  - \$6,000 | Arts in Schools - Van Buren Elementary
  - \$6,000 | Arts in Schools - Western Gateway
  - \$25,000 | Financial Loss
- \$204,750**

## ARTSPACE at Untitled

- \$7,500 | High School Mentorship Program
  - \$7,500 | Stop Motion Animation Summer Program
- \$15,000**

## ArtsUp!

- \$2,500 | Afterschool Art Programming
- \$2,500**

## Aspiring Attitudes Inc.

- \$5,200 | Dance Opportunities for All Abilities
  - \$5,000 | Let's Just ALL Dance Performance Program Scholarships
- \$10,200**

## Black Liberated Arts Center (BLAC), Inc.

- \$5,000 | John F. Kennedy Center for the Performing Arts Partners in Education Annual Meeting
- \$5,000**

## Canterbury Voices

- \$55,830
  - \$2,500 | Bel Canto Choir at the OkMEA Winter Conference
  - \$5,200 | Canterbury Youth Voices Scholarship Support
- \$63,530**

# 2025 GRANTS AWARDED

## Carpenter Square Theatre

- \$17,780
  - \$2,350 | Silent Sky Production and Workshops
- \$20,130**

## Cimarron Opera

- \$17,390
  - \$5,000 | Relocation and Reorganization of Costume Storage
- \$22,390**

## deadCenter Film

- \$41,820
  - \$5,500 | Statewide Education Tour
  - \$6,000 | deadCenter University Educational Opportunities for High School Students
  - \$5,000 | Festival Equipment Procurement
  - \$17,500 | Financial Loss
- \$75,820**

## Edmond Fine Arts Institute

- \$7,000 | Playful Dramatics
  - \$5,000 | Teaching Artist Professional Development
- \$12,000**

## El Sistema Oklahoma

- \$3,400 | Saxophones for Young Musicians
- \$3,400**

## Jazz in June

- \$2,500 | Summer Jazz Collective Concert at Jazz in June
- \$2,500**

## Lyric Theatre

- \$208,360
  - \$5,000 | Musical Interactive Tour
- \$213,360**

- Annual Allocation Grant
  - Educational Outreach Grant
  - Capacity-Building Grant
  - ARPA Grant

(Right) Artful Aging program, Mabee-Gerrer Museum of Art

THE ARTS BUILD  
EMPATHY, SPARK  
CREATIVITY AND  
STRENGTHEN  
COMMUNITY.





## Mabee-Gerrer Museum of Art

- \$57,540
- \$7,000 | Mosaics Monday Program
- \$5,500 | Artful Aging
- \$1,110 | Strengthening Board Member Capacity for Leadership and Impact

**\$71,150**

## Metro Youth Theatre

- \$3,000 | Production of "The SpongeBob Musical"

**\$3,000**

## Metropolitan School of Dance

- \$18,120
- \$5,200 | Dance Workshops at Schools and Senior Centers
- \$5,500 | Dance Workshops at Schools
- \$5,000 | Marketing Materials Update
- \$5,000 | Supporting Staff Positions

**\$38,820**



# ALLOCATIONS IMPACT

*A key source of Arts Council OKC's stability comes from our partnership with Allied Arts. Their consistent funding allows us to maintain strong, long-term relationships with community partners, ensuring that arts programming remains accessible and impactful year after year. With their support, we can provide consistent opportunities for artists, bring creative experiences to underserved populations, and adapt our programs to meet the evolving needs of Oklahoma City.*

*Beyond sustaining day-to-day operations, this funding also enables us to plan for the future, invest in innovative programming, and expand our reach. Whether through arts education in schools, interactive public performances, or creative workshops for seniors, every dollar helps us strengthen the cultural fabric of our city and make the arts a lasting part of people's lives.*





# 2025 GRANTS AWARDED

## NAMRON Players Theatre

● \$2,500 | Playwriting Workshops for Young Writers  
\$2,500

## National Cowboy & Western Heritage Museum

● \$68,140  
\$68,140

## Norman Arts Council

● \$5,000 | Arts Education Scholarships  
● \$5,000 | Arts Education Scholarships  
● \$3,847 | A/V and Technology Upgrades  
\$13,847

## Norman Firehouse Art Center

● \$25,600  
● \$5,000 | Art After School Program  
● \$5,000 | Children’s Summer Art Program  
● \$5,000 | Staff Professional Development  
\$40,600

## OK City Chorus

● \$4,950  
\$4,950

## Oklahoma Arts Institute

● \$5,000 | Student Scholarships for Oklahoma Summer Arts Institute  
\$5,000

## Oklahoma Baroque Orchestra

● \$2,000 | School Outreach Tour  
\$2,000

## Oklahoma Children’s Theatre

● \$41,240  
● \$5,500 | “A Sick Day for Amos McGee” Fieldtrips  
● \$5,000 | Rural Touring Program Support  
● \$5,000 | Production and Outreach Coordinator Support  
\$56,740

## Oklahoma City Ballet

● \$227,020  
● \$6,000 | Dance Discovery Program  
● \$6,000 | Dance Discovery BRIDGE Scholarships  
● \$3,000 | Development Team Training  
\$242,020

●

Annual Allocation Grant

●

Educational Outreach Grant

●

Capacity-Building Grant

●

ARPA Grant

THE ARTS  
BELONG TO  
EVERYONE.

# 2025 GRANTS AWARDED

## Oklahoma City Museum of Art

- \$345,820
  - \$6,000 | Healing Arts Outreach at SSM Behavioral Health and Oklahoma Children's Hospital
  - \$6,000 | Healing Arts Outreach at SSM Behavioral Health
  - \$75,000 | Financial Loss; Job Creation/Employee Retention
- \$432,820**

## Oklahoma City Philharmonic

- \$344,080
  - \$5,000 | Youth Concert Series
  - \$3,750 | Technology and Training
  - \$30,000 | Job Creation/Employee Retention
- \$382,830**

## Oklahoma City Repertory Theater

- \$5,000 | Branding and Focus Group Efforts
  - \$18,750 | Job Creation/Employee Retention
- \$23,750**

## Oklahoma Contemporary

- \$267,390
  - \$5,500 | Teen Arts Council
  - \$5,000 | Camp Contemporary Scholarships
  - \$5,000 | Technology Infrastructure Upgrade
  - \$50,000 | Financial Loss
- \$332,890**

## Oklahoma Hall of Fame

- \$5,000 | Oklahoma Originals: Ralph Ellison
- \$5,000**

## Oklahoma Museums Association

- \$3,700 | Strategic Planning Update
  - \$1,111 | Museums Advocacy Day Training / Congressional Visits in Washington DC
- \$4,811**

- Annual Allocation Grant
- Educational Outreach Grant
- Capacity-Building Grant
- ARPA Grant



## CAPACITY-BUILDING IMPACT

*Ultimately, this capacity building initiative empowered Oklahoma Contemporary to operate more effectively, support staff in delivering high-quality work and continue offering innovative exhibitions and programs that engage the community and strengthen Oklahoma Contemporary's long-term impact.*





ART  
IS FOR  
ALL  
OF US.

### Oklahoma Opry

- \$20,950
  - \$5,500 | Inventory and Technology Upgrade for Granville School of Music
- \$26,450**

### Oklahoma Shakespeare

- \$19,750
  - \$5,000 | Never Younger Program
  - \$5,000 | Never Younger Program
  - \$5,000 | Audit Support
  - \$5,000 | Support for Marketing & Outreach Position
  - \$6,000 | Job Creation/Employee Retention
- \$45,750**

### Oklahoma Visual Arts Coalition

- \$44,330
  - \$5,000 | Fundraising Consulting and Training
- \$49,330**

### Oklahoma Youth Orchestras

- \$21,000
  - \$5,000 | Special Scholarship Program
  - \$4,000 | Special Scholarship Program
  - \$3,000 | Alumni Data Project
  - \$5,000 | Brand Story Video
  - \$17,500 | Job Creation/Employee Retention
- \$55,500**

### Oklahomans for the Arts

- \$5,000 | Monthly Newsletter
- \$5,000**

### Painted Sky Opera

- \$2,500 | School and Community Outreach Tour
  - \$5,300 | The Pirates! Project
  - \$5,000 | Fundraising Training
  - \$5,000 | Marketing Specialist for 2025 season
  - \$10,500 | Job Creation/Employee Retention
- \$28,300**

### Paseo Arts Association

- \$5,000 | Art Workshops for Veterans
  - \$5,000 | Improved Technology Security/New Computers
- \$10,000**



*The training had an immediate positive impact on Southern Plains Productions' board engagement. Board members became more active in discussions, applying governance principles and collaborating more effectively. It provided a clearer understanding of their responsibilities, leading to better decision-making and communication within the team.*

## 2025 GRANTS AWARDED

### Perpetual Motion Modern Dance

- \$2,500 | Advanced Dance Partnership with Prairie Dance Theatre
  - \$15,181 | Financial Loss
- \$17,681**

### Plaza District Association

- \$850 | Participation in the Oklahoma Center for Nonprofits Standards for Excellence Program
- \$850**

### Prairie Dance Theatre

- \$9,840
  - \$5,200 | Smart Moves at Coolidge Elementary
  - \$2,898 | Dance Education Training
  - \$17,602 | Job Creation/Employee Retention
- \$35,540**

### RACE Dance Collective

- \$5,000 | Hip Hop Nutcracker
  - \$5,000 | RACE Academy
  - \$5,000 | Theory of Change
  - \$10,000 | Job Creation/Employee Retention
- \$25,000**

**THE ARTS  
DON'T JUST  
DECORATE  
A CITY –  
THEY HELP  
DEFINE IT.**



## Red Earth

● \$21,250

● \$5,000 | Photographing the Red Earth Collection

● \$28,467 | Job Creation/Employee Retention

**\$54,717**

- Annual Allocation Grant
- Educational Outreach Grant
- Capacity-Building Grant
- ARPA Grant

## Science Museum Oklahoma

● \$345,330

● \$5,000 | Sally's Night

**\$350,330**

## Sooner Theatre

● \$29,360

● \$6,000 | Scholarship and Costume Support

**\$35,360**

## Southern Plains Productions

● \$1,600 | Board of Directors Training

**\$1,600**



# EDUCATIONAL OUTREACH IMPACT

Before I joined the ARTSPACE Mentorship Program, I didn't really see myself as a creative person. I struggled a lot in school and didn't feel like I was good at anything. But when I came to the studio, I got to try screen printing and digital animation for the first time, and it completely changed how I saw myself. The mentors here don't just teach us art—they actually listen to us, encourage us, and help us figure out what we want to do in the future. I've built a portfolio that I used to apply for a summer internship, and now I'm thinking seriously about going to college for film and animation. This program gave me a place where I feel like I belong, and it made me believe that I can actually have a career doing something I love.





# 2025 FINANCIAL OVERVIEW

## REVENUE & EXPENSES

### REVENUE

Operational Revenues	\$ 5,090,388
Investment Income	\$ 357,839
<b>Total Revenues</b>	<b>\$5,448,227</b>

Allocations & Grants	\$ 3,213,900
Fundraising expenses	\$ 1,153,624
Management & General expenses	\$ 817,254
<b>TOTAL EXPENSES</b>	<b>\$5,184,778</b>

### 2025 ACTUALS



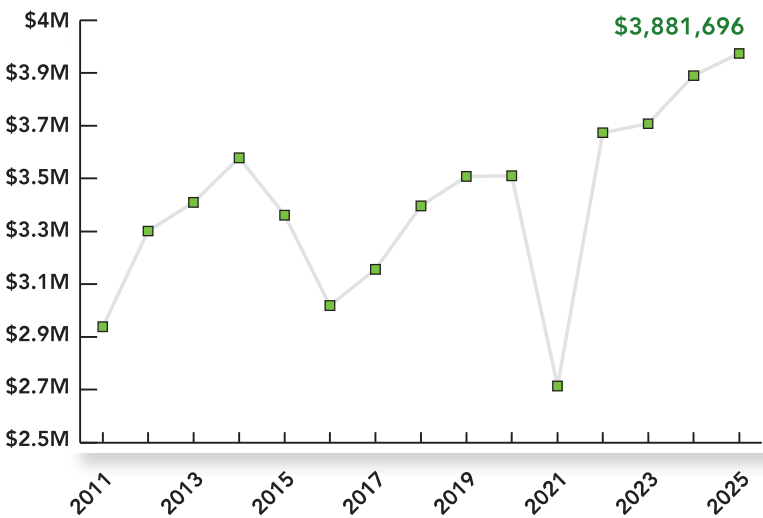
86% of \$ raised goes directly to our mission.

### NET ASSETS \$5,701,237

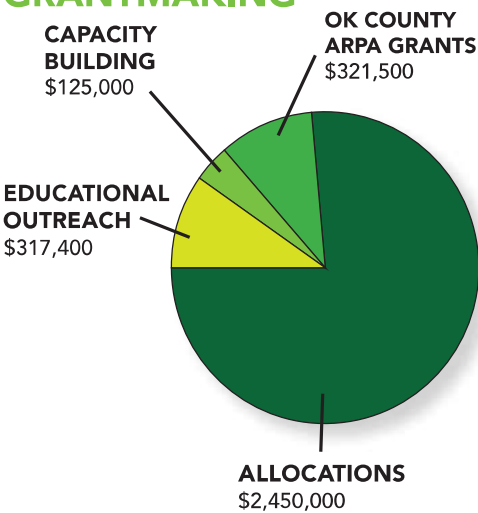


Total NET ASSETS to invest in the community.

### ANNUAL CAMPAIGN REVENUE HISTORY



### 2025 GRANTMAKING



# 2025 VISIONARIES AND SUSTAINERS

## VISIONARY \$100,000+



*the*  
**Chickasaw  
Nation**

Governor Bill Anoatubby

*"We are pleased to support Allied Arts because their efforts have such a positive impact in our communities. Their work helps make the arts more accessible to everyone, which helps inspire a greater sense of community, expand cultural experiences and encourage creative thinking."*



**AMERICAN FIDELITY**  
a different opinion 

Tom McDaniel  
President  
American Fidelity Foundation

*"American Fidelity is proud to join Allied Arts in the effort to enhance our community's quality of life. From our corporate donation to our company-wide Colleague giving campaign, American Fidelity believes in increasing access to the arts for our children and underserved segments of our community. Through our investment in Allied Arts, we are helping make arts for all possible."*



 **Continental**  
**RESOURCES**

Doug Lawler  
President & Chief Executive Officer

*"At Continental Resources, we believe that building a strong company goes hand in hand with fostering a thriving community. That's why we are proud to support Allied Arts and its mission to advance arts education and enrich communities across our state. The work Allied Arts does to support over 40 partner agencies is invaluable, and we are honored to be a long-time champion of their efforts. Our employees also take great pride in contributing to this important cause, helping make a lasting impact on the communities we serve."*



  
**devon**

Clay Gaspar  
President & CEO

*"Art is at the heart of every vibrant community—it sparks creativity, brings people together, and inspires pride in where we live. Devon supports Allied Arts because we believe the arts help shape dynamic neighborhoods, fuel economic growth and create opportunities for all. By supporting the arts, we're helping build communities where people feel connected and empowered to thrive."*



## VISIONARY \$100,000+



KIRKPATRICK  
FAMILY FUND

*A tradition of arts investment  
in central Oklahoma*



**OGE**

**We Energize Life**

Sean Trauschke  
Chairman, President  
and CEO

*"Our employees drive our Allied Arts engagement, raising over \$96,000 this year alone. Through investing in Allied Arts, we are bringing visual and performing arts into communities throughout Oklahoma. Our commitment to Allied Arts is a commitment to building a better place for us all to live, work, and play."*



Glenna & Dick  
Tanenbaum

*"We have known for centuries that a dynamic city needs a thriving cultural scene, and yet despite their necessity, the arts are historically reliant on philanthropy. And so, the arts must have supporters who are quick to assist, who are always ready to support our city's cultural life. Dick and Glenna are those people for Oklahoma City. The Medicis of Florence have nothing on the Tanenbaums of OKC. We thank them for their endless generosity and in these roles as honorary chairs for the Allied Arts campaign, their willingness to give of themselves once more."*

– Oklahoma City Mayor David Holt

## SUSTAINER \$50,000+



Cathy & Phil Busey

*"We profoundly believe in the value of the arts for all Oklahomans. Whether a child or a senior citizen, a person's world expands through their experience with music, theatre, film and dance. For this reason, we give to Allied Arts to advance the arts across the state."*

**E.L. and Thelma Gaylord**  
F O U N D A T I O N

**Christy & Jim Everest**

*"The arts inspire, educate and entertain our society. Our family is dedicated to improving the quality of life for all Oklahoma City's citizens by sustaining the growth of its cultural community."* – Christy Everest, Trustee



*"Giving back is at the heart of everything we do at Love's, and supporting Allied Arts reflects our commitment to strengthening and supporting communities across Oklahoma City. We're happy to support an organization that keeps art accessible for so many people"*

– Jenny Love Meyer, Chief Culture Officer



Polly & Larry Nichols

*"Over the years, we've seen how access to the arts can transform lives, from helping children find their voice to shaping central Oklahoma into a vibrant place where people want to live, work and thrive. Supporting Allied Arts isn't just about funding the arts – it's about investing in the heart-beat and soul of our community."*

# 2025 CORPORATE & FOUNDATION CIRCLE CLUB

Includes organizations that made a corporate campaign gift of \$1,000+ combined with their employee giving donations.

## BENEFACTOR

\$25,000+

BancFirst  
Bank of Oklahoma  
Express Employment International  
Flogistix  
Hobby Lobby  
Richison Family Foundation  
SSM Health St. Anthony Hospital

Jasco Giving Hope Foundation  
JE Dunn Construction  
Kimray, Inc.  
Lingo Construction  
Miller Architecture | Development  
Oklahoma Allergy & Asthma Clinic  
Oklahoma One Call  
Paula & Craig Boelte  
Family Foundation  
PricewaterhouseCoopers LLP

Kennedy Consulting Team, LLC  
Los Feliz Energy Company  
M.V. Williams Foundation Inc.  
Mabrey Bank  
Melvin H. & Bobbie L. Gragg Family Fund  
Mercy Health Center  
Midtown Renaissance  
Pelco Industries  
The Reserve Petroleum Company  
Sanner Family Foundation  
Spaces, Inc.  
Streets, LLC  
Ward Construction  
William E. Davis and Margaret H. Davis  
Family - Porter Davis Family Fund  
Williams, Box, Forshee & Bullard  
Wymer Brownlee Wealth Strategies

## SPONSOR

\$15,000+

Accenture  
Arvest Bank  
Baker Hughes, Inc.  
Crawley Family Foundation  
Dobson Family Foundation  
Dolese Bros. Co.  
Duncan Oil Properties, Inc.  
The Fred Jones Family Foundation  
The Kerr Foundation, Inc.  
MidFirst Bank  
Oklahoma Natural Gas

## INVESTOR

\$2,500+

ADG Blatt PC  
Allford Hall Monaghan Morris LLC  
Argent Trust Oklahoma  
BC Clark Jewelers  
Clements Foods Co.  
CVS Corporate Giving  
David & Kelly Feroli Family Fund  
Direct 2 Completion  
Enterprise Holdings Foundation  
FORVIS  
Hood Family Charitable Fund  
The Howell Gallery  
HSE Architects  
INSURICA  
Johnston Builders  
JRB Art Gallery  
a karen black company  
Kupiec Family Foundation  
Olsson  
Osborne Electric  
REES Associates  
Ross Family Foundation  
Tinker Federal Credit Union  
TVS Design  
United Mechanical, Inc.  
Valliance Bank  
Van Hoose Construction  
WFI Market & Lido Restaurant  
William H. & Martha E. Atkinson  
Foundation Fund

## FRIEND

\$1,000+

American Cleaners  
Anonymous  
Anderson & House  
The Anne & Henry Zarrow Foundation  
Armstrong Bank  
Bailey Gordon Consulting  
Ben E. Keith Foods  
Blair Sims Events  
Boldt Construction  
Braum's  
Corner Energy LLC  
Employer Advocates  
EMSCO Electric Supply  
First National Bank of Oklahoma  
FSB Architects + Engineers  
Gooden Group  
INTEGRIS Health  
InterBank  
Interstate Batteries  
Koch Communications  
The Lumber Shed  
Maccini Construction Company  
Marjorie Norick Gift Fund  
Mustang Fuel Corporation  
O.K. Detrick Foundation  
Oklahoma City Community Foundation  
Oklahoma Electrical Supply Company  
OnCue  
Orange Power Group  
Pickrell Family Fund  
Price Edwards & Company  
R.B. Akins  
Small Wheel Legacy Fund  
Smith & Kernke Funeral Home  
Southwestern Roofing & Metal, Inc.  
Studio Architecture  
Vox Printing, Inc.  
Weitzenhoffer Family College of Fine Arts

## PATRON

\$10,000+

Bhanumati, LLC  
Bolton Family Fund  
The Cresap Family Foundation  
Crowe & Dunlevy  
Edward A. & Barbara N. Krei Fund  
Full Sail Capital, LLC  
Magellan Executive Partners  
Oklahoma City Thunder  
Oklahoma Heart Hospital  
OU Health  
Presbyterian Health Foundation  
W&W | AFCO Steel

## PARTNER

\$5,000+

The Ann Lacy Foundation  
Arnall Family Foundation  
Bowen Foundation  
Candor  
The Choctaw Nation  
Cummings Oil Company  
First Fidelity Bank  
First Liberty Bank  
Flintco, LLC  
French Family  
Charitable Foundation  
Griffin Media  
HoganTaylor

## GUARANTOR

\$1,500+

Anonymous  
Bell & McCoy Lighting and Controls  
Charles Scott Waldrop Fund  
Clyde Riggs Construction  
Don T. and Carolyn Zachritz Fund  
Harrison Orr Air Conditioning, LLC  
Herb & Marynm Martin Family Fund  
Home Creations  
Integrated Finishes  
John A. Marshall



# 2025 IN-KIND DONORS

In addition to financial contributions, Allied Arts is fortunate to benefit from the generosity of businesses, individuals and fellow nonprofits that provided in-kind support throughout the fiscal year. These gifts of goods, services and other resources extended our capacity and contributed directly to our mission. We are pleased to recognize the following in-kind donors for their valued partnership.

## \$75,000+

Tyler Media

## \$15,000+

Devon Energy  
OG&E

## \$2,500+

Christopher Johnson Davis  
Naifeh Fine Jewelry

## \$1,000+

ARTSPACE at Untitled  
Eugnell Artworks  
Evan Handy  
Mr. Farooq Karim &  
Mrs. Blossom Crews  
Ms. Robin Stowers Marsh  
Tanner Ortery  
Scott's Cleaners & Magic Services

## UNDER \$1,000

23rd St. Body Piercing/  
Atomic Lotus  
Kendra Alexander  
Angry Scotsman Brewery  
Art Lab Teaching Studio + Gallery  
Aurora  
Balance Yoga Barre  
Barkeep  
Beadles Portraits  
Clayton Beavers  
Beer City Music Hall  
Ms. Rachel Benbrook  
Barbara Benton  
Sarah Black  
James Bond  
Mr. Colby Bowers  
Ms. Julie Boyd  
Ms. Kristen Brown  
Ms. Deborah Burian  
Kristin Bybee  
Taylor Caraway  
Cargo Room  
Natasha Casiano  
Cella & Me Creations  
Ms. Christa Chain  
Mark Cheek  
Cheney Truex Hair  
Chicken N Pickle  
chirps & cheers

Clarity Coffee  
Taylor Cleveland  
Amanda Cole  
Ms. Jill Coleman  
Lexi Crothers  
Gayle Curry  
Ms. Ryan Day  
Manny Drummond  
Lacey Dutton  
Mr. Gregory Erway  
Factory Obscura  
Ms. Kris Fairchild  
Josh Jaiye Farrell  
Mr. & Mrs. Russell and Lauren Florence  
Ms. Ashley Forrest  
Furever Photos  
Sean Giboney  
Diane Goldschmidt  
Callie Gordon  
Ivan Gray  
Ms. Sheree Greider  
Griffin Media  
Curtis Gruel  
Cindy Guthrie  
Guyutes  
Megan Hansen  
Ms. Hannah Harper  
Ms. Traci Hayes  
Dr. Dodge & Mrs. Lori Hill  
Brooke Hutchens  
Jaime Elliott Hair  
Mr. Chase Kerby  
Lyndsey Key  
Katelynn Noel Knick  
Lana & Dave Lopez  
Lyric Theatre  
Ma Der Lao  
Mariposa Aesthetics & Laser Center  
Ray Matsumoto  
Chris McGuire  
Jeremy Messer  
Nichole Montgomery  
Clay Moore  
Irene Moreno  
Ms. Marcella Morgan  
Jordan Morris  
Mothman Studios by Rick Sinnett  
Jackie Myers  
The National Cowboy & Western  
Heritage Museum  
Paige Nguyen  
Not Your Average Joe  
Nu String Quartet  
OCU Dance Department  
OFA Studios

OKC Improv  
Oklahoma City Museum of Art  
Oklahoma City National Memorial  
& Museum  
Oklahoma City Philharmonic  
Oklahoma City University  
Oklahoma Opry  
Oklahoma State Fair  
Pearl by Lela Rose  
Andrew Pham  
Shei Phan  
Christy Phelps  
Photography by Lindsey Colabello  
Pure Barre Nichols Hills  
Purity Day Spa  
Castagna Rasmussen  
Mr. Aaron Rayner  
Red Carpet Car Wash  
Ride OKC  
Laura Ridlon  
Me Rodriguez  
Rumble Boxing  
Mina Sadeghi  
Sailor and the Dock  
Ms. Courtney Sauls  
Autumn Savage  
Mrs. Naoma Serna-Zahn &  
Mr. Harrison Zahn  
Glenn & Polly Sharp  
Mr. James Shelley  
Ashley Showalter  
Simple Modern  
Ravi Singh  
Skin405  
Iryna Snizhenko  
Behnaz Sohrabian  
Clara Starkwell  
Mr. Clint Stone  
Strange Earth Studio  
Summer Stevens Styling  
Thomas Blonde  
Ms. Sheila Thompson  
TLC Greenhouses  
VC Tornaden  
Tower Theater  
Bridget Trowbridge  
Up-Down OKC  
VAST  
Vinifera OKC  
Jim Weaver  
Mary Lee Weaver  
Mrs. Savannah Whitehead  
William and Lauren  
David Wilson

# 2025 INDIVIDUAL CIRCLE CLUB

## BENEFACTOR

\$25,000

Mark & Julie Beffort  
Russ & Celina Harrison

## SPONSOR

\$15,000

Web & Kristine Browne  
Barby Crabtree  
Bill & Sherri Lance  
Taylor & Katie Shinn  
Chuck Wiggan

## PATRON

\$10,000

Mo & Richard Anderson  
Amy & Roy Bankhead  
and Kim & Jon Shirley  
Lois Conklin  
The Honorable Mick Cornett  
Alena & Steve Dixon  
Nick & Peggy Duncan  
Nedra Funk  
Greg & Lisa Love  
The Late Herman Meinders  
Dr. Margaret Freede Owens  
Mrs. T. Ray Phillips  
Mr. & Mrs. David Rainbolt  
Jeff & Sally Starling  
Jill & Sean Trauschke  
Mr. Gregg Wadley &  
Dr. Susan E. Brackett

## PARTNER

\$5,000

Dr. Steven C. Agee Ph.D.  
Robert & Karen Browne  
Lawrence H. & Ronna C. Davis  
Jeanette & Rand Elliott  
Amy & Jon Fisher  
Mindy & David Freymiller  
David & Kirsten Griffin  
David & Aimee Harlow  
Mr. Gregory S. Horne  
Ronnie & Shahnaaz Irani  
Dennis & Janet Jaggi  
Robert & Sharon Keating  
Jim Kessler & Karen Wicker  
Mr. Kevin Lagge  
Jenee & Darren Lister  
Joan S. Maguire  
Roxie & Glen Maynard  
Katie McClendon  
Jean McLaughlin  
Janie & Max Myers

Mrs. Valerie Naifeh & Mr. George  
Catechis  
Mr. James A. Pickel  
George Records  
Donald Rowlett & Martha Burger  
Lance & Cindy Ruffel  
Linda & Steve Slawson  
Doug & Susie Stussi  
Mrs. Jill Williams  
Tracy Williams  
Christi & Eric Woodworth

## INVESTOR

\$2,500

Anonymous  
Mr. Ian Anderson  
Nancy & Bob Anthony  
Dr. Lee & Sherry Beasley  
Lance & Linda Benham  
Louise & Clay Bennett  
Jacquelyn & Tim Berney  
Drew Braum  
Mr. Andrew Broussard  
Anna Maria & Bill Cameron  
Sunny Cearley & Adam Brooks  
Mr. & Mrs. David Carpenter  
Kati & Allen Christ  
Ed & Matilda Clements  
Richard & Dr. Melissa K. Clements  
Robert & Sody Clements  
Mari Cook-Medley  
Barbara Cooper  
Terri Cooper  
Mr. Luke Corbett  
Anita Crites-Milam  
Mr. Joe Davis  
Mr. Michael E. Deebe  
Karen R. Delaney  
Mrs. Robert S. Ellis  
Rachel & Kyle Evans  
Tricia L. Everest  
Hillary, Peter & Rowan Farrell  
Shaun & Emily Fiaccone  
Nova & Eric Fleske  
Dr. Teresa Folger  
Beverly & Mark Funke  
Ann Felton Gilliland  
Mr. & Mrs. Charles S. Givens  
Alex & Rochelle Gray  
Kelly & Amy Gray  
Alice & Dave Hager  
Saralyn Hall  
Jane B. Harlow  
Jay & Debbie Harper  
Matthew & Dana Harper  
Brent Hart & Matt Thomas  
Suzette & S. Kim Hatfield  
Debe & Rick Hauschild  
Caroline & Durward Hendee  
Dr. Dodge & Mrs. Lori Hill  
Frank & Bette Jo Hill  
Mr. & Mrs. Steve Hofener  
Mr. Kent Hoffman  
Elaine & Andy Hood  
Henry & Laura Hood  
Ann Johnstone  
Peggy Kates  
Frank & Cathy Keating  
Cody & Amanda Kelly  
Dr. & Mrs. Larson R. Keso  
Mr. & Mrs. D. Benham Kirk  
Pamela & Jim Klepper  
Mr. John Rollin Koons  
Debra & Kristian Kos  
Edith & Michael Laird  
Mark & Carol Lester  
Harrison & Elaine Levy  
Mr. Seth Lewis  
Mr. James Linhardt  
Christopher Lloyd & Erik Salazar  
Paula Love  
Ed & Diana Lynn  
Mr. & Mrs. Edmund O. Martin  
Dominique C. & Travis C. Mason  
Lisa & Steve Mason  
Mark & Marta McCubbin  
Tom & Brenda McDaniel  
Lew & Jennifer McGinnis  
Mr. & Mrs. K.T. Meade  
Virginia A. Meade  
Kathy & Robert Mendez  
Sandy & Wes Milbourn  
Tony & Marian Moon  
Mr. Rick Muncrief  
Drs. Sumit & Sumeeta Nanda  
G. David Neff & Suzanne Peck  
Joe & Kim O'Connor  
Mr. & Mrs. Roy Oliver  
Charles L. Oppenheim  
Sandra Peyton  
Alice & Phil Pippin  
Mr. Justin Porter  
Leighann & Brett Price  
Patrick & Marianne Rooney  
Manda Ruffin  
Mr. & Mrs. Tom Ryan  
Susan & Dennis Sandler  
Mr. & Mrs. Roger Simons  
Darryl & Kathy Smette  
Rick & Amanda Smith  
Tiffany & Don Smith  
Kristen & Douglas Sorocco  
Russell & Sarah Stafford  
Lee & Suzie Symcox  
David & Jane Thompson  
Beth & James Tolbert  
Lonny & Sherry Towell



# 2025 INDIVIDUAL CIRCLE CLUB

Emy & D. Wayne Trousdale  
Mrs. Morgan Turner  
Mr. & Mrs. Chuck Walworth  
Kari & Hardy Watkins  
Mr. Jared Weingartner  
James & Jennifer Weinland  
John & Rebecca West  
Greg & Janine Wheeler  
Marcus & Lindsey Whitworth  
Ken & Susan Whittington

## GUARANTOR

\$1,500

Paul W. & Leigh Ann Albers  
Mrs. Sherry Vance Allen  
Pascal & Dolores Aughtry  
Patricia & Rick Ayling  
Mr. Brad & Mrs. Jennifer Balding  
The Barnett Family  
Ms. Kelly Barnett  
Dr. Stefanie Beavers  
Steve & Cara Belcher  
Ms. Emily Duncan Belusko  
Dr. & Mrs. Charles F. Bethea  
Diana & Steven Bittle  
Mr. & Mrs. Glenn Blumstein  
Marilyn & Bill Boettger  
Mrs. Annie Bohanon  
Cordell Brown & Kerry Norman  
Hal & Kathy Brown  
Kim & Steve Bruno  
Mr. & Mrs. Dub Brunsteter  
Jim & Becky Buchanan  
Kristie Buergler  
Mr. & Mrs. Jerry Burger  
Lori Burson  
Mark & Teresa Burson  
Cristy Callins  
Mrs. Jane & Mr. Lonnie Childress  
Jim & Carolyn Clark  
Anna Cox & Jarrod Fergeson  
Jeremy & Jennifer Colby  
Bob Curtis  
Grant & Summer DeFehr  
Mr. & Mrs. John Paul Dick  
Mr. Matt Dornan  
Paul & Debby Dudman  
Mr. & Mrs. Michael Eastmond  
Mr. Tracy Enloe  
Larry & Roberta Fields  
Mr. & Mrs. Joseph Fleckinger  
Ellen & Tim Fleming  
Gerald Gamble &  
Jane Jayroe Gamble  
Clay & Leanne Gaspar  
Mr. & Mrs. Dale Hageman  
Mrs. Kirk Hammons  
Amanda & Nathaniel Harding

Anjelique Hearne  
Mrs. Joy Heiman  
Eli Hellman  
Molly & Geoff Helm  
Mr. & Mrs. John Higginbotham  
Mr. & Mrs. Clayton Howell  
Clifford & Leslie Hudson  
Gary & Gail Huneryager  
Mr. Garrett Jackson  
Karen James & John Gray  
Barbara & Mason P. Jett, MD  
Lauren & Rich Johnson  
Mr. Donnie Jones  
Mr. Farooq Karim &  
Mrs. Blossom Crews  
Claren M. Kidd  
Mr. & Mrs. Ed Kirby  
Brad & Robin Krieger  
Travis Lawler & Amanda  
Kirkpatrick-Lawler  
Donna & Bruce Lawrence  
Lee Allan Smith Family  
Tom & Jane Lerum  
Mr. & Mrs. Ryan & Jenny Lewellyn  
Ms. Olena Lifset  
Sherry & Todd Marshall  
Amy McEvoy  
Sarah Meade  
Mrs. Helen Mercer  
Mr. & Mrs. Harry Merson  
Ken Miller  
Dr. & Mrs. Scott Mitchell  
Mr. & Mrs. Greg Mullen  
Clark & Kay Musser  
Randy & Cara Nance  
Ms. Debbie Nauser  
Dr. Loan Nguyen  
David & Camilla Ostrowe  
Caroline & Guy Patton  
Brent & Chele Peters  
Berry & Frances H. Pitts  
Mr. Thomas Price  
Dr. Robert & Mrs. Denise Remondino  
Brad & Lisa Richardson  
Jim & Claudia Robertson  
Teresa Rose  
Jimmy & Ruth Sallis  
Meg Salyer  
Dr. & Mrs. E.N. Scott Samara  
Karen Samis  
Joli & Cam Sanders  
Scott Senner &  
Deborah McAuliffe Senner  
Frank & Amy Sewell  
Bill & Pam Shdeed  
Mr. & Mrs. Carl Shortt Jr.  
Dr. Amalia Silverstein  
Roe & Tara Simmons  
Scott & Suzanne Spradling

Mr. & Mrs. Brad Steele  
Rev. Dr. Craig Stinson &  
Dr. Krista Jones  
Mark & Debbie Stonecipher  
Tim & Marylee Strange  
Mrs. Al Strecker  
Bob & Amanda Sullivan  
Clayton & Marnie Taylor  
Mr. Chuck Thompson  
Ms. Debbie Thompson  
Jeff & Sarah Thompson  
Mrs. Billie Thrash  
Emily & Jeff Trotter  
Carolyn Turpin-Messick  
Ms. Erin Van Laanen  
Ms. Vicki Van Stavern &  
Mr. Don Narcomey  
Dr. Geetika Verma  
Mr. & Mrs. Randy von Netzer  
Ms. Laura Warriner  
Dr. & Mrs. James R. Wendelken  
Ms. Stephania Williams  
Drew Williamson  
Heather & Jim Wilson  
Mr. & Mrs. Chad & Sarah Wolfe  
David & Myra Woods  
Mr. Michael Yarbrough

## FRIEND

\$1,000

Anonymous  
Mr. & Mrs. Patrick B. Alexander  
Jennifer & Mark Allen  
Dewayne & Rebecca Andrews  
Lieutenant Governor  
Chris Anoatubby  
Mrs. Catherine & Mr. John Armitage  
Alex & Kelley Bagby  
Mrs. Rhonda Baker  
Sterling & Cheryl Baker  
Ms. Paula Barrington  
J. Edward Barth  
Dr. & Mrs. Lissa Blaschke  
Anthony & Julie Blatt  
Ms. Thayla Bohn  
Jeff & Debbie Bolding  
Dan & Andrea Boren  
Maj. Gen. W. P. Bowden  
Andy & Jennifer Bowman  
David & Regina Bozalis  
Nancy & Joe Bradley  
Mrs. Michelle R. Brooks  
Dan & Meghan Bruner  
Jennifer & Dan Bryan  
Ms. Tracey Budz  
Mr. & Mrs. Rob & Julie Burch  
Julie & Sean Burrage  
Mr. & Mrs. Philip Busey Jr.

# 2025 INDIVIDUAL CIRCLE CLUB

## FRIEND

### \$1,000 (CONTINUED)

Mr. & Mrs. Ronald J. Byrne  
Mr. & Mrs. Bernest Cain  
Lisa & Dennis Cameron  
Nathan & Scarlet Cao  
Mr. & Mrs. Randy Cassimus  
John Blenford Chadwick, Jr.  
Dr. Mel & Karen Clark  
Mr. Walker Clay  
Carolyn Coffey  
Mr. Ed Collins  
Dr. & Mrs. William Cook  
Mr. Jeremiah Corbin  
Mr. & Mrs. David Cottrell  
Ms. Emily Crain  
Mr. Jason Crawford  
Mrs. Kimberly Dangerfield  
Ms. Amy Davis  
Lee Ann DeArman  
Thomas & Rita Dearmon  
Barb Denny  
Michael & Elizabeth Dionisio  
David & Venessa Donchin  
Ann-Clore & Walt Duncan  
Ms. Kathryn Dunlap  
Bill & Barbara Durrett  
Leah Dutton  
Ms. Cassandra Eaton  
Rodney & Teri England  
Mr. Keith Erickson  
Carlos & Kristi Evans  
Mr. & Mrs. Jeff Ewing  
Mr. Ali Farzaneh  
Natalie & Jeremy Fitzpatrick  
Polly Fleet  
Mrs. Erin & Dr. D. Nelson Fong  
Kevin & Jenni Fosbenner  
Ms. Kelley France  
Mr. & Mrs. David Frankenfield  
Joan Frates  
Molly Fuhrman  
Mr. & Mrs. Chris Gander  
Jerry & Mark Gautreaux  
Mrs. Christy Gillenwater  
Ashley, Jeff, Madeline &  
Reese Gockstetter  
Mr. Travis Gould  
Vicki Gourley  
Mr. Brandon Guderian  
Ms. Sarah Hale  
Debby & Mike Hampton  
Mrs. Mandy Hansen  
Ann & Burns Hargis

Ms. Karley Harper  
Mrs. Mia Harper  
Mr. Dominique Harris  
Judy J. Hatfield  
Morgan & Justin Henry  
Mr. & Mrs. Gregg Henson  
Brenda & Jorge Hernandez  
Susan & Peter Hoffman  
Karin & David Holsted  
Mark Houser & Joan Allmaras  
John & Janet Hudson  
Mr. & Mrs. David A. Huffman  
Gabe & Caroline Ikard  
Kyle Impson & Steve Kochenower  
Mr. Scott Inman  
Col. (Ret.) Dean &  
Mrs. Jeanne Jackson  
Mrs. Crystal James  
Pam & Carlos E. Johnson  
Mr. Christian K. Keesee  
& Mr. Larry Keigwin  
Mr. & Mrs. Gary Kinslow  
Sandra & Michael Kirk  
Mr. & Mrs. Chris Kirt  
Lindel & Donielle Larison  
Courtney Lavender  
Jane Law  
Mr. Doug Lawler  
Christopher Lelak  
Mr. Randy Lewis  
Olena Lifset  
Linda & Duke R. Ligon  
Ms. Cathi Linch  
Kathryn Liska  
Michael & Cori Loomis  
Lana & Dave Lopez  
Janelle & Mason Archer Maidt  
Cindy & Johnny McCharen  
Mollie & Sam McCurdy  
Ms. Davalene McDonald  
Mrs. Christina McLaughlin  
Liz & Tim McLaughlin  
Bruce & Claire McLinn  
Mr. & Mrs. Carl Milam  
Stuart & Leslie Milsten  
Mr. Tim Mitchell  
Ms. Geron Morgan  
Pam & Mike Mowry  
Donna R. Murray  
Mrs. Stephanie & Mr. Blair Naifeh  
Lynda & Chuck Nelson  
Ms. Catherine O'Connor  
Steve Owens  
Mr. & Mrs. Ron Page  
Ms. Danielle Painter

David & Jessica Parker  
Mr. Phillip Parks  
Richard & Gayle Parry  
Mr. & Mrs. Brandon & Amy Patrick  
Rachel & Collins Peck  
Dr. & Mrs. Gus Pekara  
Ms. Gena Perry  
Tori & Kevin Perry  
Renee & Nick Preftakes  
Mr. Sam Rainbolt  
John & Cynthia Reid  
Ms. Susan Relland  
Drs. Robert & Suzanne Reynolds  
Mr. Trent Riley  
Leah Roper  
Fawn Sachleben  
Dr. Lois L. Salmeron  
Phil & Avis Scaramucci  
Robert & Jaime Schultheis  
Mr. & Mrs. John & Elizabeth Semtner  
Mary & John Seward  
Mr. & Mrs. Jeffrey Seymour  
Cindi & Mike Shelby  
John & Shayla Slay  
Mr. Sam Smith  
Lee Anne & C. Renzi Stone  
Wayne Stone & Ann Ackerman  
Mr. & Mrs. William Sultemeier  
Mr. & Mrs. Barry Switzer  
Steven & Maggie Sylke  
Mr. Cooper Tate &  
Mr. Derek Cohlma  
Mrs. Alison Taylor  
Arthur & Betty Thompson  
Mickey Thompson & Kym  
Koch-Thompson  
Ms. Britta Thrift  
Douglas & Renet Tippens  
Jeremy Tipton  
Dr. Leslie Shaw VanBuskirk  
Shelby Vanhooser & Margaret White  
Mr. & Mrs. Thomas B. Walsh, CPA  
Mr. & Mrs. Andy Watkins  
Matthew & Alba Weaver  
Susan Weed  
Shane & Lori Wharton  
Roy H. Williams  
David Wilson & Karen Ross  
Mr. Forrest Wilson  
Mr. Jake Winkler  
Megan & Keith Winter  
Mr. Larry & Mrs. Victoria Woods  
Steve & Eileen Young



**Members of the ARTini art auction subcommittee meet to review submitted artwork for the event.**



## 2025 CATALYST

Allied Arts Catalyst offers individuals age 40 and younger a meaningful way to connect to the community through the arts. With an annual gift of \$300 for individuals or \$500 for couples, members gain access to leadership and networking opportunities while contributing to the vitality of our cultural landscape. In addition, they play a central role in planning and supporting our signature ARTini fundraising event, one of the most anticipated nonprofit events of the year.

Kendra Alexander  
Ms. Hannah Andrus  
Mr. Randall Barnes  
Mr. Jose Batty  
Mr. Chase Beckham  
Ms. Rachel Benbrook  
Ryan Benton  
Ms. Brooke Boevers  
Mrs. Kirby Brinlee  
Paula & Matt Cagigal  
Tiffany & Joseph Campbell  
Catherine Anne Cape  
Shannon Carr  
Maria Chaverri  
Blake & Emma Cherry  
Mr. Cory Christofferson  
Mr. Bill Cohlma  
Mrs. Alaina Conley  
Casey & Marek Cornett  
Leslie & Oyvind Sunnarvik  
Mrs. Rebekah Curry  
Christopher Johnson Davis  
Mr. Cole Deardeuff  
Mr. Tyler Dunlap  
Mr. Casey Fuhrmann  
Kimberly Gamalski  
Kelley Gann  
Mrs. Crystal Garcia  
Mr. & Mrs. Rowdy Gilbert  
Zach & Lacey Gilliam  
Lindsey Gonzalez  
Mrs. Hanna Hagans  
Grace Hall

Evan Handy  
Ty Hartman  
Ms. Charity Head  
Ms. Stefani Heller  
Ms. Mady Hendryx  
Mr. & Mrs. Chase Henninger  
Ms. Dedra Hicks  
Mrs. Alex Hudson  
Hannah Hudson  
Ms. Jordan Jackson  
Mrs. Crystal James  
Ms. Abigail Jones  
Mrs. Elizabeth Jones  
Mrs. Felicia &  
Mr. Parker Jones  
Ms. Savannah Jones  
Mr. Avery Jouris-Chavez  
Ms. Heather Justice  
Ms. Logan King  
Mr. Pete Kinzer  
Mr. Austin Klososky  
Mrs. Francie Koop  
Mrs. Amanda Landherr  
Ms. Cayla Lewis  
Jenna Linholm &  
Nathan Woods  
Stephanie Little  
Mr. Charlie Ludden  
Mrs. Lauren Lynch  
Mrs. Rachel Lyon  
Mr. Zach Maggia  
Janelle & Mason  
Archer Maidt

Ms. Lyndsey Marsaln  
Mrs. Erika Martin  
Macie May  
Ryan McCann  
Ms. Emma McKinney  
Mr. Dan & Mrs.  
Chelsey McKnight  
Mrs. Ashley Melchert  
Joseph D Messick  
Ms. Girma Moaning  
Ms. Hannah Moore  
Ms. Micah Moore  
Mr. Daniel Morgan  
Ms. Marcella Morgan  
Ms. Olivia Morse  
Mr. Jerrod Moser  
Sean & Lauren O'Brien  
Ms. Crystal  
Papacharalambous  
Mr. & Mrs. Scott Parrish  
Mrs. Bailey Perkins Wright  
Ms. Anne Pham  
Mrs. Morgan Phillips  
Ms. Emily Poppe  
Ms. Jessica Pozo  
Ms. Susanna Przywojski  
Mr. Zachary Quintero  
Ms. Erica Redding  
Tessa Richter  
Ms. Laura Ridlon  
Mr. Joshua Roberts  
Mr. Sam Roberts

Mr. Christian  
Rosas-Hamilton  
Mr. Paul Schoelen  
Mr. Corey Seaman  
Ms. Dani Shafer  
Ms. Maggie Shaffer  
Mr. Lucas Shannon  
Kenton & Brittney Shaw  
Ms. Lindsay Sherwood  
Mr. Chris Shilling  
Mr. Travis Shinn  
Ms. Cindy Silva  
Mr. & Mrs. Todd Smethers  
Mrs. Kristi Spomer  
Mr. Kenneth Springs  
Mr. Laramy Spruill  
Ms. Sarah Stevens  
Mrs. Natalie Tallbear  
Clay & Becky Taylor  
Jenyann & Keifer Truett  
Mrs. Amanda Trumbo  
Hannah Tubbs  
Ms. Emma Tucker  
Mr. Nick Tyler  
Dr. Shana Usiukiewicz  
Mrs. Erin Vestring  
Justin Wallace  
Caitlin Washington  
Ms. Chelsi Weddle  
Mrs. Allison Wilshire  
Mrs. Riley Wren

# 2025 BOARD OF DIRECTORS

## OFFICERS

### Chair

Aimee Harlow  
*Community Volunteer*

### Vice Chair

Max Myers  
*Humphreys Capital*

### Treasurer

Grant DeFehr  
*Annapurna Global Macro LP*

### Secretary

Taylor Shinn  
*Baker Hughes*

## EXECUTIVE COMMITTEE

### Kati Christ

*Prosperity Bank*

### Hillary Farrell

*The Chickasaw Nation*

### Dana Harper

*Retired, FBI*

### Russ Harrison

*Compellier*

### D. Benham Kirk

*Doerner, Sanders, Daniel & Anderson*

### Debra Kos

*Community Volunteer*

### Michael Laird

*Crowe & Dunlevy*

### Steve Mason

*Mason Realty Investors*

### Glen Maynard

*Retired, Devon Energy*

### Valerie Naifeh

*Naifeh Fine Jewelry*

### Debbie Nauser

*Community Volunteer*

### Tori Perry

*Alkermes Pharmaceuticals*

### James Pickel

*Prairie Earth Gardens*

### Chuck Thompson

*American Investment Group*

### Heather Wilson

*EMBARK*

### David Woods

*Magellan Executive Partners  
and Cortado Ventures*



Alison Taylor  
presents Board  
Member Grant  
DeFehr with  
the 2025 Zach  
D. Taylor  
Volunteer  
of the Year  
Award.



## DIRECTORS

Janelle Archer  
Cotality  
Alex Bagby  
Retired, American Fidelity  
Dr. Stefanie Beavers  
OU Health  
Mark Beffort  
Robinson Park  
Tyler Bolton  
South Wind EP  
Thayla Bohn  
American Fidelity  
Betsy Brunsteter  
Mary Brunsteter Consulting  
Gabrielle Butler  
Oklahoma City Community Foundation  
Jason Constable  
AT&T  
Tracy Enloe  
Oklahoma Heart Hospital  
Shannon Faison  
Bank of Oklahoma  
Peter Farrell  
Saxum  
Marla Freeman  
Devon Energy  
Ashley Gockstetter  
Love's Travel Stops

Bailey Gordon  
BGC Fundraising  
Jennifer Gray  
Choctaw Nation of Oklahoma  
Brooke Haneborg  
Manhattan Construction  
Morgan Henry  
MidFirst Bank  
Jorge Hernandez  
Tango PR  
John Higginbotham  
MidFirst Bank  
Kyle Impson  
Aetna  
Scott Inman  
Valliance Bank  
Farooq Karim  
REES Associates  
Geron Morgan  
FORVIS  
Salvador Ontiveros  
Latino Community Development  
Agency  
Collins Peck  
Peck Commercial Construction  
Fredrick Redwine  
Consolidated Capital Investments LLC

Leah Roper  
Center for Employment Law  
Melissa Scaramucci  
Community Volunteer  
Blair Sims  
Blair Sims Events  
Jeff Starling  
State of Oklahoma  
Steven Sylke  
Inasmuch Foundation  
Suzie Symcox  
First Fidelity Bank  
Debbie Thompson  
Community Volunteer  
Jill Trauschke  
Community Volunteer  
Emily Grober Trotter  
Grober Trotter LLC  
Alba Weaver  
OG&E  
Marcus Whitworth  
UPS  
Drew Williamson  
UBS Financial Services  
Bailey Perkins Wright  
Community Volunteer

## 2025 ALLIED ARTS STAFF

**Sunny Cearley**  
*President & CEO*

**Jennifer Bowman**  
*Director of Development*

**Jennifer Bryan**  
*Director of Outreach*

**Sarah W. Frank**  
*Events Manager*

**Brooke Hutchens**  
*Board Liaison/Executive Assistant*

**Courtney Lavender**  
*Campaign Manager*

**Joseph Messick**  
*Finance Associate/Office Administrator*

**Jessica Misun**  
*Development Manager*

**Shelly Sanderson**  
*Senior Development Manager*

**Robert Schultheis**  
*Director of Finance*

**Cara Tarron**  
*Development Data Analyst*



**Allied Arts Staff Thunder Up**



**THE ARTS  
DON'T SIT  
ON THE  
SIDELINE  
OF  
PROGRESS  
– THEY  
HELP  
DEFINE IT.**

## **ALLIED ARTS**

Enriching Lives Through  
Advancement of the Arts

1015 N. Broadway Ave. Ste. 200  
Oklahoma City, OK 73102

(405) 278-8944

[www.alliedartsokc.com](http://www.alliedartsokc.com)

**This report was generously printed in-kind by Devon Energy Corp.**

***Please share it with someone who should know more about Allied Arts!***