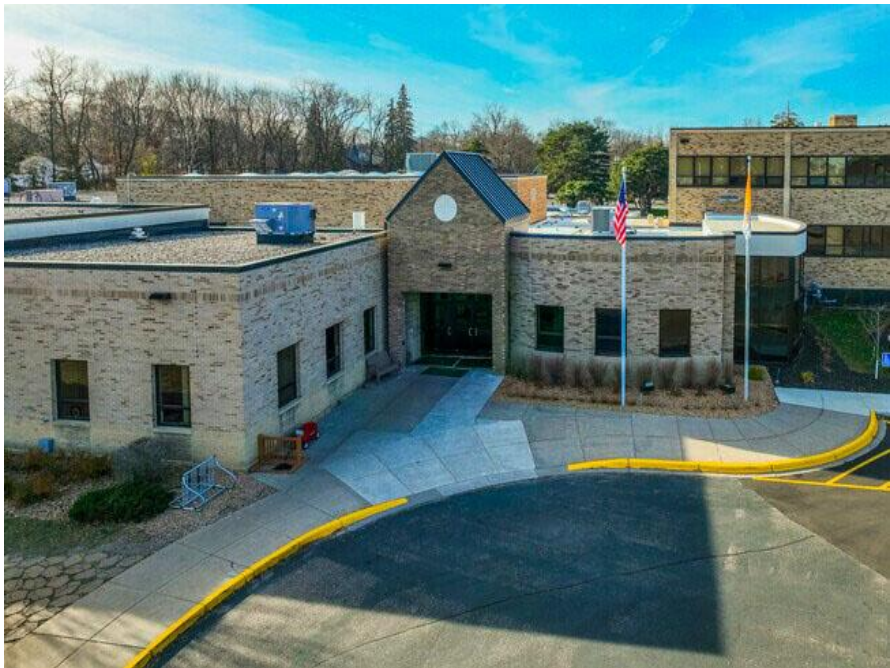


Church and School Case Study: Entrance Mats Fit for Everyday Foot Traffic



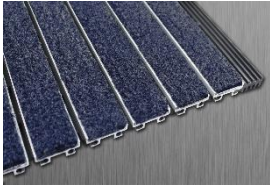


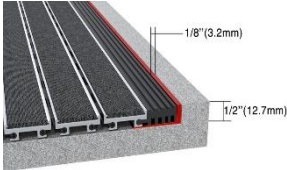
Introduction/Overview

Ronick Matting Systems specializes in aluminum entrance mats customized for an array of locations, including religious settings such as churches, synagogues, chapels, mosques, temples, places of worship, faith-based communities and even schools with a religious affiliation. These mats are specially designed to enhance building safety, functionality, and aesthetics while also helping uphold a clean environment.

Project

Installing a new entrance matting system for a religious school/church in a Twin Cities suburb (Minnesota).

For this project, our team installed 4 different mats; 2 for the church side and 2 for the school side, and we will outline the results for both parts of the building.

Church and School Product Specifics for this Case Study			
Product Type	Finish Type	Insert Type	Frame Type
			
BaseTread 200	Mill Finish	Heavy Duty Carpet: Black Iron	L2 Frame

## Church and School Entrance Mat Details

- **Product:** BaseTread 200
- **Sizes:**
  - Church Entrances: 17.5 x 5', 11 x 6'
  - School Entrances: 12.5' x 8', 7.5' x 9'
- **Carpet Insert:** Exterior Brush Carpet - We recommend either Heavy-Duty Carpet or Exterior Brush inserts due to its 3D wiping features.
- **Finish Type:** Mill Finish
- **Frame:** L2 Frame



*Black Iron heavy-duty carpet inserts at a church and religious school setting.*

In 2022, a church and school upgraded their entrance matting system from rental mats to permanent aluminum mats for all of their entrances. They opted to have the robust BaseTread 200 installed at the 4 different entrances (2 church entrances and 2 school entrances).

Chosen for its durability, strength, slip resistance, and convenient roll-up design. This aluminum entrance matting structure has proven to be a noteworthy advantage in ensuring safety and cleanliness for students and church-goers alike at each of the entrances. The BaseTread 200 can handle 750 lbs. per wheel load, making it the definitive entrance solution to support large volumes of foot and wheeled traffic of patrons of various ages: young students to elderly community members, families and everything in between.

Prior to having a permanent matting structure installed this religious school and church combination utilized rental mats for their day-to-day needs. The choice to switch to aluminum entrance mats was made due to the long-term cost savings, dirt trapping capabilities, safety, functionality, and customizability. With rental mats, there is no surface scraping action - dirt and water stays on the surface and gets tracked in on the soles of the students and church members' shoes.





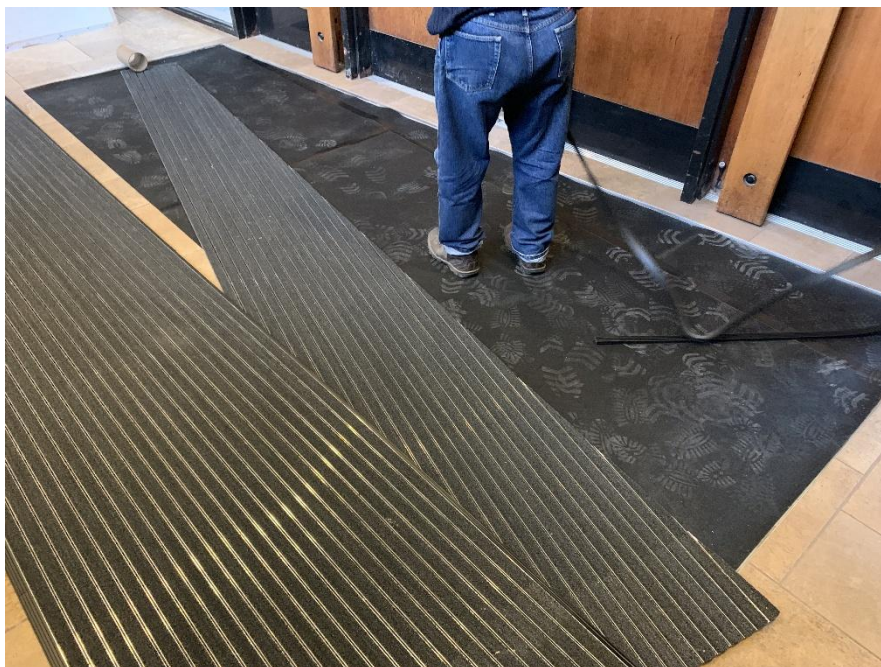
*Rental mats before the permanent aluminum matting systems were installed.*

Permanent entrance matting is customized to the exact dimensions and specifications and can be tailor made to fit the entrance needs; whereas rental mats, come in set sizes and standard shapes so an organization may end up needing to rent numerous mats to cover the preferred space. Rental mats are not secured to the floor allowing them to buckle, curl, pucker, and slide across the floor, opening the door for a trip and fall accident. For more information on rental mats vs permanent mats please visit here: <https://www.ronick.com/blogs/renting-your-entrance-mat-vs-purchasing-your-entrance-mat>



*A template was created for this church entrance to accommodate for irregular angles and special cuts needed for this mat.*

The school has 45 team members and over 300 students Kindergarten- 8<sup>th</sup> grade. The church has 12 church staff positions, and over 500 regular parishioners. The structure has gone through multiple renovations and expansions since its opening in 1957 to accommodate the growing needs of the community.



*Cleaning the recess and retrofitted underlay for the new aluminum entrance mat.*

The BaseTread 200 continues to perform well across all of their entrances, all while contributing to the overall cleanliness, safety, and design aesthetic of both the church and the religious school setting. Its combination of strength, safety, and ease of maintenance ensures that the congregation, students, faculty, staff, and guests are starting their school day or their regular church adoration on the right foot.

### Installation Process

Estimated Installation Time: 8 hours with 2 people. It is recommended to conduct maintenance during off-peak hours when minimal constituents will be impacted.

### Materials Needed:





For this project, the team started by removing the existing futile rental mats, and they retrofitted the ½" depth of the BaseTread 200 aluminum entrance mat for the installation. The existing area was deep cleaned for the new entrance mat. Any dirt, debris, or hardened material on the surface of the concrete was carefully removed by scraping away and sweeping up the excess rubble fragments. This ensures a clean, smooth base for the new aluminum entrance matting system.

Once the area was prepped, the new aluminum matting system was rolled out flat and adjusted into place. The aluminum entrance mat fits securely into position, providing a stable, slip-resistant surface that is ready for use.



*Close up view of the rails and the angled cuts for the entrance mat.*

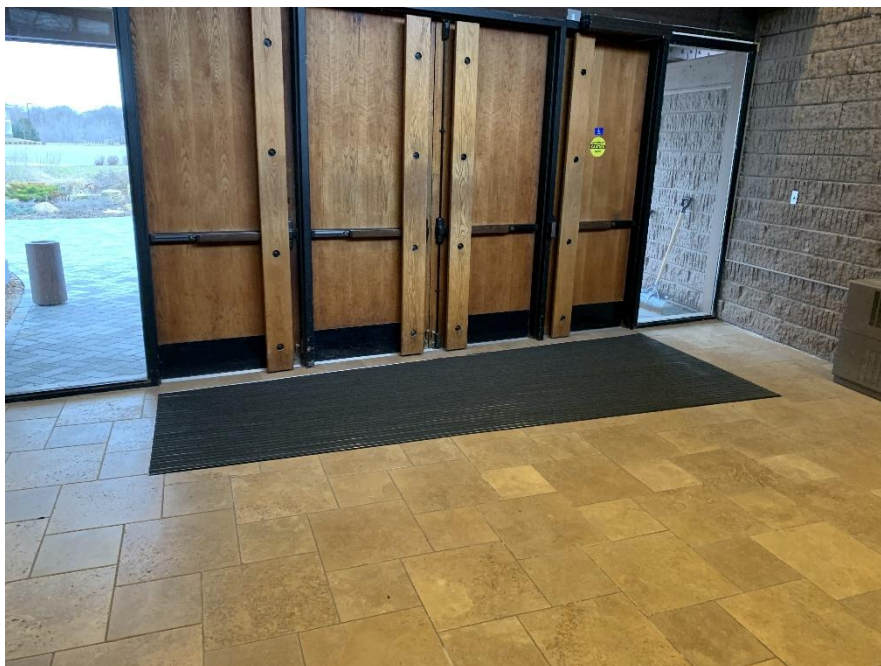
### The Outcome

One of the main features of an aluminum matting system is the perforations in the matting, which allows for dirt and debris to collect in the recessed well beneath the carpet, barring it from entering the facility. This design not only improves building cleanliness but also ensures that debris fragments are contained and easily removed during routine cleaning; while also maintaining heightened safety in high traffic settings where slip and fall accidents are more prone to occur.

MonoTuft Heavy duty carpet inserts are a blend of nylon and polypropylene, with monofilament fibers. They have an aggressive brush action that removes debris from the soles of shoes and absorbs moisture simultaneously.

For this school and church entrance, the carpet inserts were carefully chosen to maximize both slip resistance and dirt retention. The chosen color combination, 90% black and 10% gray, was precisely engineered to expertly hide dirt, debris, and salt that was tracked in from the outside.

Approximately 14.5 pounds of dirt was collected annually for the entrances at the school/church setting.



View of the main church entrance, after installation.  
Mat Installed:  
BaseTread 200

### Product Recommendations for this Industry

Entrance matting isn't just about improving safety; it plays a central role in maintaining a clean site. The Carpet and Rug Institute (CRI) states that an appropriately installed entrance mat 15-25 feet in length can inhibit 75% to 90% of dirt and debris from being tracked into a structure.

In addition to minimizing dirt, entrance mats also provide sizable cost savings. The International Sanitary Supply Association (ISSA) estimates that establishments can have cost savings of about \$600 in maintenance expenses for each pound of dirt and debris prevented from entering the religious setting. This includes savings in cleaning supplies, labor costs, and even the prolonged lifespan of flooring materials.

For religious facilities, this not only means a cleaner, safer environment for students and parishioners, but also a more cost-effective approach to building maintenance and enhanced building design aesthetics.

Religious School/Church Case Study Overview						
Location	Foot Traffic	Mat Type	Dimensions	Dirt Collected	Time to Install	Cost Savings
Religious School/Church	School: 300+ Students & 45 team members. Church: 500+ Parishioners	BaseTread 200	School Entrances: 12.5' x 8', 7.5' x 9' Church Entrances: 17.5 x 5', 11 x 6'	14.5 pounds of dirt and debris per year	Team of 2, about 8 hours	\$600 per pound of dirt trapped or \$8,700 per year

& 12 Staff  
Members.

or 321 total  
sq ft of  
matting.

### Summary of Findings

4 entrances + 321 sq ft of matting = 14.5 pounds of dirt retained each year.

In large religious establishments safety and cleanliness are paramount, especially when it comes to the entrance areas. Churches, temples, and other places of worship see a variety of individuals and guests. Students and parishioners wear an assortment of footwear and there is a large volume of foot and wheeled traffic, which means that having an entrance mat that is ADA compliant and strong is vital for measuring up to the demands of a prominent religious school / church location.

One solution that meets these needs is the BaseTread 200, a durable, ADA compliant, slip-resistant matting system specifically designed for high-traffic areas.



*Religious school  
and church in a  
Minneapolis, MN  
suburb.*