

A Family in Christ

Our Future Together



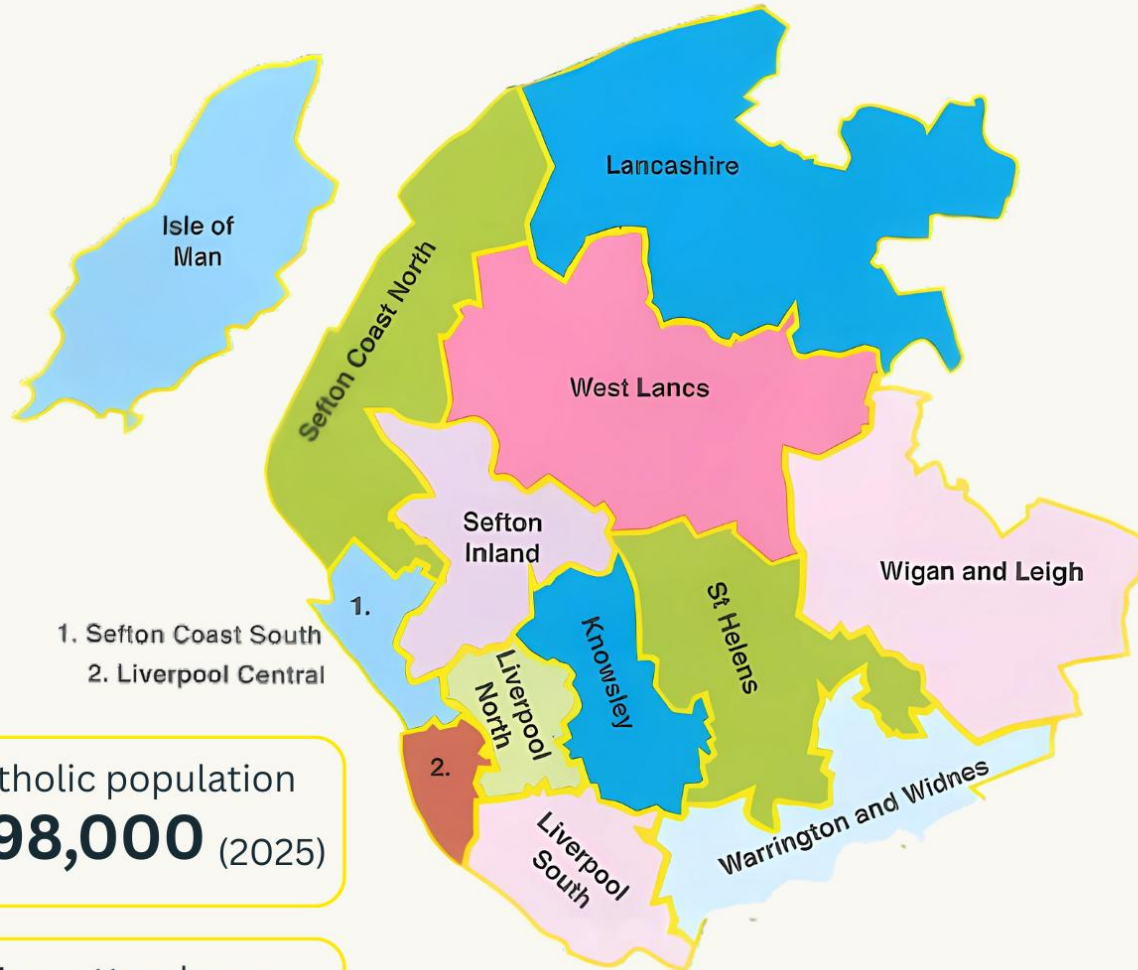
Archdiocese of  
Liverpool

# Archdiocese of Liverpool Pastoral Plan - Family of Parishes

- A group of neighbouring parishes working together
  - Share priests, resources, and mission
  - Focus on serving local communities more effectively
  - Encourages collaboration and unity
- 
- The Family of Parishes model helps the Archdiocese of Liverpool respond to modern challenges while continuing its mission of faith, service, and community.



The Archdiocese of Liverpool extends from the Mersey to the Ribble, encompassing Merseyside, parts of Lancashire, Cheshire and Greater Manchester, and the Isle of Man.



Catholic population  
**498,000** (2025)

Mass attendance  
**26,907** (2024)



**Deaneries**  
**13**



**Parishes**  
**112**



**Churches**  
**187**



**Schools**  
**221**



**Cathedrals**  
**2**

# A Family of Schools and Colleges

The Archdiocese of Liverpool Family of Schools and Colleges is united in its mission to provide a high-quality, authentically Catholic education for every child and young person.

Through our renewed academisation strategy, we strengthen collaboration, safeguard our Catholic identity, and ensure that all our schools and colleges can flourish together—today and for the future.



# A Family in Christ: Our Future Together

Family: We are relational

Christ: Christ-centred/Catholic

Future: Forward looking/Future proofing

Together: Collegial



Each star has  
its own brightness,  
but together they  
chart a course.



# What is our strategy?

- There will be three Catholic Multi Academy trusts.
- These will be large trusts.
- It will be a regional based model with Hubs built into each trust.
- Each trust will have two to three hubs with a Catholic Senior leader for each.
- Our two sixth form colleges will part of this process but will have a separate journey.



# Three Archdiocese of Liverpool Trusts

Pope Francis CMAT

Sefton and Lancashire



St Joseph's CMAT

Liverpool and St Helens



Our Lady of Lourdes NW CMAT

Knowsley, Halton, Warrington, Wigan



All Saints Multi Academy Trust



Laetare Catholic Multi Academy Trust



# Waves

In order to accommodate the onboarding of many schools, and the creation of a new Multi-Academy Trust, schools will come on board in five carefully planned waves.



# Wave 1

# Pope Francis CMAT



## LANCASHIRE

**St Bede's High, Ormskirk**

Our Lady & All Saints Primary Parbold

St Anne's Primary, Ormskirk

St John's Primary, Burscough

St Mary's Primary, Scarisbrick

**Our Lady Queen of Peace High, Skelmersdale**

St Edmund's Primary, Skelmersdale

St Francis of Assisi Primary, Skelmersdale

St James Primary, Skelmersdale

St Richard's Primary, Skelmersdale

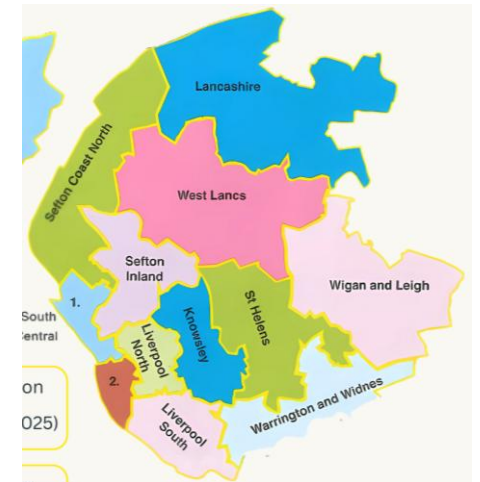
St John's Primary, Skelmersdale

## SEFTON

Great Crosby Primary

Ursuline Primary, Crosby

St Jerome's Primary, Formby



# Wave 1

# St Joseph's CMAT

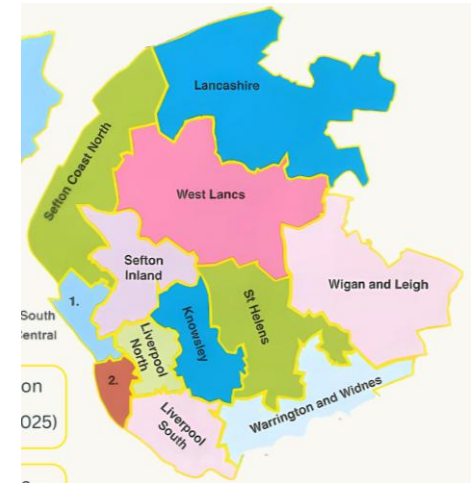


## LIVERPOOL

Holy Cross, Liverpool  
Our Lady Immaculate, Everton  
St John's, Kirkdale  
Christ the King, Childwall  
Our Lady of Good Help, Wavertree  
Our Lady's Bishop Eton  
St Anthony of Padua, Mossley Hill  
St Austin's, Grassendale

## ST HELENS

**St Cuthbert's High, St Helens**  
Holy Spirit, Parr  
St Thomas of Canterbury  
Ss Peter and Paul, Haresfinch  
St Mary's, Birchley  
St Mary's, Blackbrook  
St Anne's, Sutton  
St Theresa's, Sutton Manor  
Holy Cross, St Helens  
Corpus Christi, Rainford



# Our Lady of Lourdes NW CMAT

This trust will start in the next academic year.

Timings of waves to be confirmed.



# Timeline

# Our Lady of Lourdes NW Wave 1

## WIGAN

### St Peter's High, Orrell

St Bernadette's Primary, Shevington

St Cuthbert's Primary, Wigan

St James' Primary, Orrell

St Marie's Primary, Standish

St Teresa's, Upholland

St Joseph's, Wrightington

### St John Fisher High, Wigan

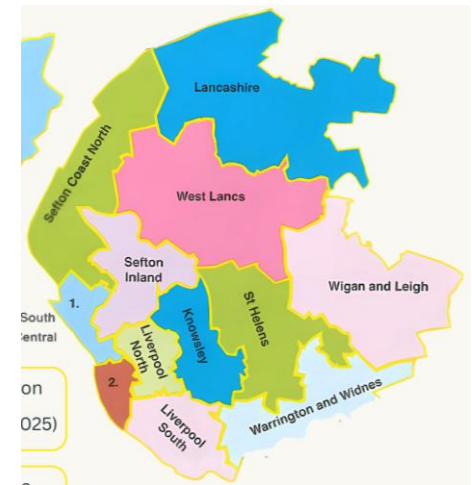
Sacred Heart Primary, Wigan

St Jude's Primary, Wigan

St Mary's & St John's Primary, Wigan

St Patrick's Primary, Wigan

St William's Primary, Ince



# Timeline

# Pope Francis CMAT



WAVE 2		WAVE 3	
<b>HOLY FAMILY HIGH</b>	<b>ST MARY'S HIGH, LEYLAND</b>	<b>HOLY CROSS HIGH, CHORLEY</b>	<b>ALL HALLOWS HIGH, PENWORTHAM</b>
English Martyr's, Litherland	St Mary's, Leyland	Sacred Heart, Chorley	St Mary Magdalen's, Penwortham
Our Lady of Compassion, Formby	St Anne's, Leyland	St Chad's, Whittle-le-Woods	St Teresa's, Penwortham
Our Lady Queen of Peace, Litherland	St Catherine's, Farington	St Gregory's, Chorley	St Oswald's, Longton
St Benedict's, Netherton	St Mary's, Euxton	St Joseph's, Anderton	
St William of York, Thornton	Ss Peter & Paul, Mawdesley	St Joseph's, Chorley	Our Lady Star of the Sea, Seaforth
	St Joseph's, Brindle	St Joseph's, Withnell	St Elizabeth's, Litherland
		St Mary's, Chorley	St Monica's, Bootle
		St Oswald's, Coppull	St Robert Bellarmine, Bootle
		St Bede's, Clayton Green	All Saints, Bootle



<b>WAVE 4</b>	<b>WAVE 5</b>
<b>MARICOURT HIGH, MAGHULL</b>	<b>CHRIST THE KING HIGH, SOUTHPORT</b>
Holy Rosary, Aintree	Holy Family, Southport
St George's, Maghull	St Patrick's, Southport
St Gregory's, Lydiate	
St John Bosco, Maghull	



# Timeline

# St Joseph's CMAT



WAVE 2	WAVE 3	WAVE 4	WAVE 5
<b>BROUGHTON HALL HIGH</b>	<b>ST JOHN BOSCO HIGH</b>	<b>ST JULIE'S HIGH, WOOLTON</b>	<b>ARCHBISHOP BECK HIGH</b>
<b>CARDINAL HEENAN HIGH</b>	Our Lady & St Philomena, Liverpool	Much Woolton	Blessed Sacrament, Liverpool
St Cecilia's, Tuebrook	Our Lady & St Swithin, Croxteth	Our Lady of the Assumption	Holy Name, Fazakerley
St Cuthbert's, Liverpool	St Matthew's, Walton	St Clare's, Wavertree	St Francis de Sales Infant, Walton
St Oswald's, Old Swan	St Austin's, Thatto Heath	St Gregory's, Netherley	St Francis de Sales Junior, Walton
St Paul & St Timothy's, West Derby	St Bartholomew's, Rainhill	St Paschal Baylon, Childwall	Holy Family, Liverpool
St Paul's Juniors, West Derby	St John Vianney's, Sutton Heath	All Saints, Anfield	St Anne's, Liverpool
St Sebastian's, Liverpool	St Julie's, Eccleston	Sacred Heart, Kensington	St Finbar's, Liverpool
	St Teresa's, St Helens	St Michael's, Liverpool	St Hugh's, Liverpool
	English Martyrs, Haydock	Holy Trinity, Liverpool	St Patrick's, Liverpool
		St Christopher's, Speke	St Vincent de Paul, Liverpool





# Timeline

# Our Lady of Lourdes NW CMAT

WAVE 4	WAVE 5	
<b>ST GREGORY'S HIGH, WARRINGTON</b>	<b>ST MARY'S HIGH, ASTLEY</b>	<b>ST EDMUND ARROWSMITH HIGH, ASHTON-IN-MAKERFIELD</b>
Sacred Heart, Warrington	Holy Family, Boothstown	Sacred Heart, Hindley Green
St Alban's, Warrington	Sacred Heart, Hindsford	St Aidan's, Winstanley
St Benedict's, Warrington	Sacred Heart, Leigh	St Benedict's, Hindley
St Joseph's, Penketh	Twelve Apostles, Leigh	St Oswald's, Ashton-in-Makerfield
St Vincent's, Penketh	St Ambrose Barlow, Astley	St Wilfrid's, Ashton-in-Makerfield
St Bridget's, Fearnhead	St Gabriel's, Higher Folds	
St Oswald's, Padgate	St Joseph's, Leigh	
St Peter's, Woolston	St Richard's, Atherton	
St Stephen's, Orford	All Saints, Golborne	
St Lewis', Croft	St Catherine of Siena, Lowton	
St Paul of the Cross, Burtonwood		

# Next steps

- All schools in Wave 1 will need a Governing Body meeting at which representatives from the Archdiocese and the trust will attend.
- The Frequently Asked Questions and other documentation will be sent out to you by the end of the week.
- All questions raised in the QR code today will be addressed in the documentation sent out to you.
- Any school that was hoping to be academised sooner than in their proposed waves are welcome to contact us for a further discussion.
- All documentation will be available on the Education Department section of the Archdiocesan website by the end of the week.



A Family in Christ

Our Future Together



Archdiocese of  
Liverpool