



The fleet

Asset overview



***DOF is your innovative partner
in offshore solutions.***

Content

All specifications are subject to changes without prior notice.
Please contact DOF for details and verifications.

<u>Subsea</u>	<u>4</u>	<u>AHTS</u>	<u>41</u>
Geoholm	5	Skandi Amazonas	42
Skandi Acergy	6	Skandi Angra	43
Skandi Achiever	7	Skandi Botafogo	44
Skandi Asserter	8	Skandi Clipper	45
Skandi Açu	9	Skandi Cutter	46
Skandi Africa	10	Skandi Emerald	47
Skandi Buzios	11	Skandi Fluminense	48
Skandi Carla	12	Skandi Iceman	49
Skandi Chieftain	13	Skandi Iguaçu	50
Skandi Commander	14	Skandi Ipanema	51
Skandi Constructor	15	Skandi Laser	52
Skandi Darwin	16	Skandi Lifter	53
Skandi Forza	17	Skandi Logger	54
Skandi Hawk	18	Skandi Mariner	55
Skandi Hera	19	Skandi Master	56
Skandi Hercules	20	Skandi Minder	57
Skandi Hugen	21	Skandi Mobiliser	58
Skandi Implementer	22	Skandi Mover	59
Skandi Installer	23	Skandi Paraty	60
Skandi Inventor	24	Skandi Peregrino	61
Skandi Involver	25	Skandi Rio	62
Skandi Nexus	26	Skandi Saltfjord	63
Skandi Niteroi	27	Skandi Urca	64
Skandi Nomad	28	Skandi Vega	65
Skandi Olinda	29		
Skandi Olympia	30	<u>PSV</u>	<u>66</u>
Skandi Patagonia	31	Skandi Barra	67
Skandi Recife	32	Skandi Caledonia	68
Skandi Salvador	33	Skandi Feistein	69
Skandi Seven	34	Skandi Flora	70
Skandi Singapore	35	Skandi Kvitsøy	71
Skandi Skansen	36	Skandi Marøy	72
Skandi Vinland	37	Skandi Mongstad	73
Skandi Vitoria	38	Skandi Nova	74
<u>Cable-layer</u>	<u>39</u>	Contacts	75
Skandi Connector	40		

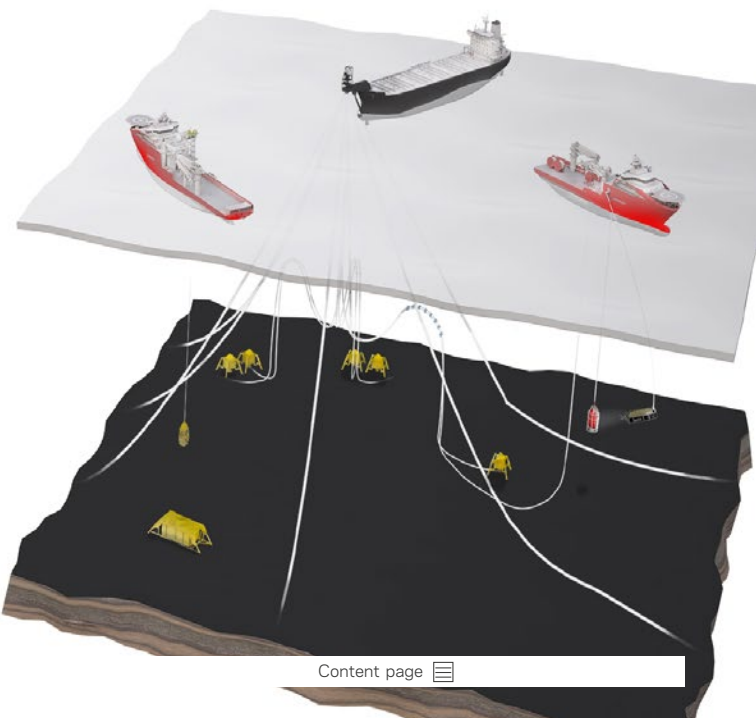
DOF Group ASA is a leading provider of essential offshore and subsea services to the global offshore energy industry, and has vessels operating in all major oil and gas regions. We operate within three different business segments in relation to strategic types of activities and vessel types: Subsea vessels (Subsea), Anchor Handling Tug Supply vessels (AHTS), and Platform Supply Vessels (PSV).



All specifications are subject to changes without prior notice.
Please contact DOF for details and verifications.

Subsea

Subsea vessels are the most complicated in the DOF fleet. Diving vessels, well stimulation vessels, pipe lay vessels, multipurpose support vessels, and others belong in the category.





Geoholm

Vessel built	2006	Helideck dim	20.9 m diam, 12 t
Vessel design	MT 6000 Mk II	ROV hangar	133 m ²
Class definition	✘ 1A1 Clean COMF(V-3) DK(+) DYNPOS(AUTR) EO HELDK SF	Deck crane	SWL 5 t SWL 3 t
LOA	85.65 m	Offshore crane	SWL 90/100 t 2140 m/1939 m
Breadth mld	19.7 m		
Summer draught	6.1 m		
Deadweight	3691 t		
Accommodation	70		
Gross tonnage	4454		
Main engines	4 x 1530 kW		
Bow thruster	1 x 883 kW		
Azimuth thruster	2 x 883 kW		
Stern thruster	2 x 2200 kW		
Deck dimension	890 m ²		
Deck strength	5 t/m ²		
Deck capacity	1100 t		
Fuel oil	1208 m ³		
Pot water	705 m ³		



Skandi Acergy

Vessel built	2008	Fuel oil	2306 m ³
Vessel design	AKER OSCV 06L	Pot water	1500 m ³
Class definition		Helideck dim	21 m diam, 12 t
✘ 1A1 ICE-C SF COMF-V(3)C(3) HELDK-SH CRANE EO DYNPOS-AUTRO NAUT-AW Clean(Design) DK(+) TMON		Moonpool	(7.2 x 7.2 m) + 2 x (5.6 x 3.5 m)
LOA	156.9 m	ROV hangar	292 m ²
Breadth mld	27.0 m	Deck crane	2 x SWL 3 t
Summer draught	8.5 m	Offshore crane	SWL 400 t 3000 m
Deadweight	11500 t	Offshore crane II	SWL 50/100 t 2000/1000 m
Accommodation	140	Tower	FLS 125 t
Gross tonnage	16500		
Main engines	2 x 3840 kW 4 x 2895 kW		
Bow thruster	2 x 1900 kW		
Azimuth thruster	2 x 1500 kW		
Stern thruster	2 x 3000 kW		
Deck dimensions	2100 m ²		
Deck strength	10 t/m ²		
Deck capacity	7000 t		



Skandi Achiever

Vessel built	2007	Fuel oil	1201 m ³
Vessel design	AKER DSV 06	Pot water	1088 m ³
Class definition		Helideck dim	20.9 m diam, 12 t
✘ 1A1 ICE-C COMF-V(3) HELDK DSV-SAT EO DYNPOS-AUTR (A) NAUT-AW Clean(Design) DK(+)		Moonpool	4.2 x 4.2 m
LOA	105.9 m	ROV hangar	137 m ²
Breadth mld	21.0 m	Deck crane	SWL 3 t
Summer draught	6.6 m	Seabed crane	SWL 5 t
Deadweight	4000 t	Offshore crane	SWL 140 t 2500 m
Accommodation	100	Diving system	18 men saturated diving system installed
Gross tonnage	7617		
Main engines	4 x 1665 kW 2 x 1980 kW		
Bow thruster	1 x 1500 kW		
Azimuth thruster	2 x 1500 kW		
Stern thruster	2 x 2200 kW		
Deck dimensions	735 m ² + (Mezz deck = 153 m ²)		
Deck strength	5 - 10 t/m ²		
Deck capacity	1300 t		



Skandi Asserter

Vessel built	2003	Pot water	760 m ³
Vessel design	Maersk shipdesign	ROV hangar	TBA
Class definition	A1, Offshore Support Vessel, Supply, TOW, AMS, ACCU, DPS-2, TCM, PMP+	Deck crane	2 x 15 t
		Offshore crane	SWL 250 t
LOA	90.3 m		
Breadth mld	23 m		
Scantling draft	7.8 m		
Deadweight	3872 t		
Accommodation	86		
Gross tonnage	6685		
Main engines	TBA		
Bow thruster	1 x 1500 kW		
Azimuth thruster	1 x 1300 kW		
Stern thruster	2 x 880 kW		
Deck dimensions	770 m ²		
Deck strength	10 - 15 t/m ²		
Deck capacity	2500 t		
Fuel oil	2032 m ³		



Skandi Açü

Vessel delivery	2016	Pot water	1750 m ³
Vessel design	VARD 3 05	Moonpool	9.1 m x 7.2 m
Class definition	✱ 1A1 E0 DYNPOS-AUTR DK (+) CRANE HELDK-SH BIS Clean(Design) NAUT-AW Comf-V(3) C(3) SPS BWM (T) Recyclable SF	Helideck dim	20.8 m dia, 12 t
LOA	145.9 m	Deck crane	1 x SWL 6 t 1 x SWL 10 t 2 x SWL 50 t
Breadth mld	30.0 m	Offshore crane	1 x SWL 50 t
Summer draught	8.5 m	Laytower	650 t
Deadweight	10857 t	Laytower	650 t
Accommodation	120		
Gross tonnage	18075		
Main engines	6 x 3840 kW		
Bow thruster	3 x 2400 kW		
Azimuth thruster	1 x 2000 kW		
Stern thruster	3 x 3700 kW		
Deck dimensions	3000 m ²		
Deck strength	10 t/m ²		
Fuel oil	2450 m ³		



Skandi Africa

Vessel built	2015	Deck strength	10 t-15 t/m ²
Vessel design	VARD OSCV 12	Deck capacity	5000 t
Class definition		Fuel oil	2650 m ³
✘ 1A1 Offshore service vessel		Pot water	800 m ³
SPS BIS BWM(T) Clean(Design)		Methanol/special product	200 m ³
COMF(C-3, V-3) Crane DEICE		Brine/Glycol	500 m ³
DK(+) DYNPOS(AUTRO)		Moonpool	9.4 m x 7.2 m
EO HELDK(S, H) LFL(*)		ROV moonpool	2 x 5 m x 5.6 m
NAUT(AW) Recyclable SF VIBR		ROV hangar	321 m ²
Winterized(Basic)		Deck crane	3 x SWL 6 t
LOA	160.9 m	Offshore crane	SWL 450/900 t
Breadth mld	32.0 m		4400/2200 m
Summer draught	9.25 m	Offshore crane II	SWL 150 t 3000 m
Deadweight	12655 t	Laytower	650 t
Accommodation	140	Laytower	650 t
Gross tonnage	22696		
Main engines	4 x 3840 kW 2 x 4320 kW		
Bow thruster	2 x 2800 kW		
Azimuth thruster	2 x 2200 kW		
Stern thruster	3 x 3700 kW		
Deck dimensions	2700 m ³		



Skandi Buzios

Vessel built	2016	Chain locker	TBC
Vessel design	VARD 3 05	Moonpool	9.1 m x 7.2 m
Class definition	✕ 1A1 E0 DYNPOS-AUTR DK (+) CRANE HELDK-SH BIS Clean(Design) NAUT-AW Comf-V(3) C(3) SPS ICS SF	Helideck dim	22 m diam
LOA	146.0 m	Deck crane	1 x SWL 5 t 1 x SWL 10 t 2 x SWL 15 t
Breadth mld	30.0 m	Offshore crane	50 t SWL
Summer draught	8.5 m	Laytower (tiltable)	650 t
Deadweight	13200 t	Basket	1 x 2500 t 1 x 1500 t
Accommodation	120		
Gross tonnage	18075		
Main engines	6 x 3840 kW		
Bow thruster	3 x 2400 kW		
Azimuth thruster	1 x 2000 kW		
Stern thruster	3 x 3700 kW		
Deck dimensions	3000 m ²		
Deck strength	10 t/m ²		
Fuel oil	2500 m ³		
Pot water	1800 m ³		



Skandi Carla

Vessel built	2001	Pot water	851 m ³
Vessel design	MT 6002	Drill water	1598 m ³
Class definition	MEG	MEG	270 m ³
✕ 1A1 SF HELDK E0 DYNPOS-AUTR CLEAN DK(+)		Helideck dim	19.5 m diam, 9.3 t
LOA	83.85 m	Moonpool	30 m ²
Breadth mld	19.7 m	ROV hangar	130 m ²
Summer draught	6.1 m	Deck crane	SWL 3 t SWL 10 t
Deadweight	3244 t	Offshore crane	SWL 50 t 3105 m
Accommodation	80		
Gross tonnage	4456		
Main engines	4 x 2530 kW		
Bow thruster	2 x 1000 kW		
Azimuth thruster	1 x 1000 kW		
Stern thruster	2 x 2200 kW		
Deck dimensions	634 m ² + total Mezz 209 m ²		
Deck strength	5 t/m ²		
Deck capacity	820 t		
Fuel oil	1448 m ³		



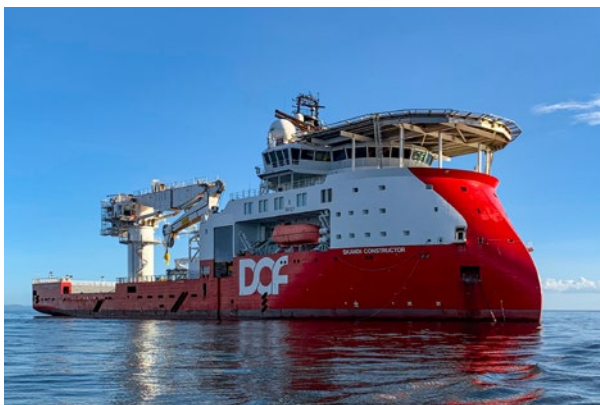
Skandi Chieftain

Vessel built	2005	Base oil	347 m ³
Vessel design	MT 6009	Brine	424 m ³
Class definition	✱ 1A1 SF COMF-V(3) E0 DYNPOS-AUTR CLEAN DK(+) HL(2.5)	Methanol	206 m ³
LOA	74.3 m	Mud	1083 m ³
Breadth mld	16.4 m	Deck crane	SWL 3 t SWL 1 t SWL 16 t
Summer draught	6.3 m	Offshore crane	SWL 16 t
Deadweight	3300 t	A-frame	SWL 30 t
Accommodation	50	AHC winch	SWL 10 t
Gross tonnage	3187		
Main engines	4 x 1150 kW		
Bow thruster	2 x 800 kW		
Azimuth thruster	2 x 1470 kW		
Deck dimensions	260 m ²		
Deck strength	5 t/m ²		
Deck capacity	2030 t		
Fuel oil	1200 m ³		
Pot water	651 m ³		
Drill water	912 m ³		



Skandi Commander

Vessel built	2007	Drill water	892 m ³
Vessel design	MT 6009	Base oil	346 m ³
Class definition	✘ 1A1 SF COMF-V(3) E0 DYNPOS-AUTR NAUT-OSV(A) CLEAN DK(+) HL(2.5)	Brine	424 m ³
LOA	74.3 m	Methanol	206 m ³
Breadth mld	16.4 m	Mud	1079 m ³
Summer draught	6.2 m	Deck crane	SWL 1 t SWL 3 t
Deadweight	3268 t	Offshore crane	SWL 10 t
Accommodation	48	A-frame	SWL 30 t
Gross tonnage	3203	AHC winch	SWL 10 t
Main engines	2 x 1140 kW 2 x 1330 kW		
Bow thruster	2 x 1920 kW		
Azimuth thruster	2 x 1470 kW		
Deck dimensions	218 m ²		
Deck strength	5 t/m ²		
Deck capacity	1600 t		
Fuel oil	1232 m ³		
Pot water	652 m ³		



Skandi Constructor

Vessel built	2009	Deck strength	10 t/m ²
Vessel design	Ulstein SX121	Deck capacity	1470 t
Class definition	✘ 1A1 Ship-shaped Well Intervention 1 SF LFL* COMF-V(3)C(3) HELDK CRANE OPP-F EO DYNPOS-AUTRO (A) NAUT-OSV(A) Clean(Design) DK(+) HL(2.8)	Fuel oil	2210 m ³
LOA	120.2 m	Pot water	990 m ³
Breadth mld	25.0 m	Drill water	3140 m ³
Summer draught	8.0 m	Brine	500 m ³
Deadweight	8565 t	Methanol	200 m ³
Accommodation	100	Helideck dim	22.8 m diam, 14.6 t
Gross tonnage	11572	Moonpool	8 x 8 m
Main engines	2 x 4320 kW 2 x 28 80 kW	ROV hangar	172 m ³
Bow thruster	2 x 1920 kW	Deck crane	2 x SWL 2.5 t @ 10 m (1.55t @ 14.79 m) 1 x SWL 15 t
Azimuth thruster	2 x 1800 kW	Offshore crane	SWL 250 t 2450 m
Stern thruster	2 x 3500 kW	Tower	SWL 140 t @ 0 - 1500 m / SWL 115 t @ 1500 - 2500 m
Deck dimensions	1470 m ²		



Skandi Darwin

Vessel built	2012	The vessel has a Multi- Application Cargo System Tank capacities are dependent on configuration of tank modes and maximum for each product (combined tanks).
Vessel design	MT 6015 MPSV	
Class definition	✘ 1A1 EO SF Dynpos AUTR CLEAN DESIGN COMF-V (rat. 3) DK(+) hl(2,5 LFL* NAUT OSV (A) Ice C SPS Oil Recovery	
LOA	93.8 m	Fuel oil 1030 m ³
Breadth mld	20.0 m	Fresh water 1000 m ³
Summer draught	6.5 m	Drill water 2100 m ³
Deadweight	TBA t	Brine 790/1120 m ³
Accommodation	60	Methanol 194 m ³
Gross tonnage	6055	Dry bulk 330 m ³
Main engines	4 x 2230 kW	Mud 1185/ 1515 m ³
Bow thrusters	2 x 925 kW	Deck crane SWL 2 t SWL 3 t
Azimuth thruster	1 x 880 kW	Offshore crane 70 t
Stern thruster	2 x 2200 kW	
Deck dimension	760 m ²	
Deck strength	10 t/m ²	
Deck capacity	1850 t	



Skandi Forza

Vessel built	2008	Pot water	1242 m ³
Vessel design	Marin Teknikk 6022	Drill water	5058 m ³
Class definition	A1, AMS, ACCU, DPS-2, HELIDK, HDC (10t/m ² , Main Deck), ENVIRO, PMP+, COMF(V-3), SF	Deck crane	2 x 5 t
		Offshore crane	SWL 250 t 2950 m
LOA	107.6 m		
Breadth mld	22.0 m		
Summer draught	7.2 m		
Deadweight	6577 t		
Accommodation	120		
Gross tonnage	7694		
Main engines	Total 12725 kW		
Bow thruster	2 x 1300 kW		
Azimuth thruster	1 x 1200 kW		
Deck dimension	1120 m ²		
Deck strength	5 - 10 t/m ²		
Deck capacity	3200 t		
Fuel oil	1506 m ³		



Skandi Hawk

Vessel built	2012	Fuel oil	1054 m ³
Vessel design	STX PSV 09 CD	Pot water	533 m ³
Class definition		Drill water	2166 m ³
✘ 1A1 Fire fighter(I)		Base oil	192 m ³
Supply vessel Clean(Design)		Brine	960 m ³
COMF(V-3) DK(+)		Methanol	208 m ³
DYNPOS(AUTR) E0 HL(2.8)		Dry bulk	320 m ³
LFL(*) NAUT(OSV(A)) SF		Mud	970 m ³
LOA	88.1 m	Deck crane	SWL 1 t SWL 5 t
Breadth mld	19.0 m	Offshore crane	SWL 60 t 2000 m
Summer draught	6.6 m		
Deadweight	4400 t		
Accommodation	62		
Gross tonnage	4508		
Main engines	4 x 1665 kW		
Bow thruster	1 x 880 kW		
Azimuth thruster	1 x 880 kW		
Stern thruster	2 x 2200 kW		
Deck dimension	730 m ²		
Deck strength	5 - 10 t/m ²		
Deck capacity	2450 t		



Skandi Hera

Vessel built	2009	Ballast water	4771 m ³
Vessel design	Ulstein A122	Base oil	190 m ³
Class definition		Mud	639 m ³
✘ 1A1 ICE-C Tug Supply Vessel		Cement	175 m ³
SF COMF-V(3)C(3) OPP-F EO		Brine	964 m ³
DYNPOS-AUTR NAUT-OSV(A)		Fresh water	706 m ³
CLEAN DESIGN DK(+) HL(2.5)		Bollard pull	277 t
LOA	93.8 m	Special-handling drum	500 t
Breadth mld	23.0 m	Towing & AH drum	2 x 450 t
Summer draught	8.0 m	Chain locker	4 x 200 m ³
Deadweight	4925 t	Shark jaws	2 x 800 t
Accommodation	68	Towing pins	4 x 300 t
Gross tonnage	6839	Offshore crane	140 t
Main engines	2 x 4500 kW	Deck crane	1 x SWL 25 t 2 x SWL 5 t
Bow thruster	2 x 1200 kW		
Azimuth thruster	1 x 1400 kW		
Stern thruster	2 x 1050 kW		
Deck dimensions	721 m ²		
Deck strength	10 t/m ²		
Deck capacity	2500 t		
Fuel oil	1800 m ³		



Skandi Hercules

Vessel built	2010	Deck capacity	2800 t
Vessel design	STX AH04 CD	Fuel oil	2416 m ³
Class definition	✘ 1A1 Tug Supply Vessel SF COMF-V(3) HELDK-SH E0 DYNPOS-AUTR NAUT-OSV(A) Clean(Design) DK(+) HL(2.8) TMON	Pot water	965 m ³
		Helideck dim	20.88 m diam, 12.8 t
LOA	109.6 m	Moonpool	7.2 x 7.2 m
		ROV hangar	68 m ²
Breadth mld	24.0 m	Deck crane	2 x SWL 3 t 2 x SWL 5 t
		Offshore crane	SWL 250 t 3000 m
Summer draught	7.8 m	Bollard pull	354 t
Deadweight	4985 t	AH drum	1 x 500 t
Accommodation	90	Towing drum	2 x 500 t
Gross tonnage	8246	Chain locker	4 x 299 m ³
Main engines	2 x 7680 kW 4 x 2600 kW	Shark jaws	3 x 800 t
		Towing pins	4 x 300 t
Bow thruster	2 x 1500 kW		
Azimuth thruster	1 x 1500 kW		
Stern thruster	2 x 1200 kW		
Deck dimension	970 m ²		
Deck strength	10 t/m ²		



Skandi Hugen

Vessel built	2013	Deck capacity	2600 t
Vessel design	STX MRV 05 ROV	Fuel oil	857 m ³
Class definition	✘ 1A1 Offshore service vessel SPS Standby vessel Clean(Design) COMF(V-3) DK(+) DYNPOS(AUTR) EO HL(2.8) NAUT(OSV(A)) OILREC SF	Mud	594 m ³
		Pot water	1123 m ³
		Base oil	415 m ³
		Dry bulk	305 m ³
LOA	82.2 m	Drill water	1383 m ³
Breadth mld	17.0 m	Brine	270 m ³
Summer draught	6.1 m	ORO	1604 m ³
Deadweight	2900 t	Offshore crane	SWL 15 t 220 m
Accommodation	46	Offshore crane II	SWL 15 t 220 m
Gross tonnage	4365	NOFO compliant	Yes
Main engines	2 x 2600 kW 1 x 1665 kW		
Bow thruster	2 x 880 kW		
Azimuth thruster	1 x 1200 kW		
Stern thruster	2 x 2200 kW		
Deck dimension	570 m ²		
Deck strength	5 - 10 t/m ²		



Skandi Implementer

Vessel built	2018	Deck strength	10 t/m ²
Vessel design	Marin Teknikk 6027	Deck capacity	TBA t
Class definition	A1, Offshore Support Vessel, Supply, AMS, ACCU, DPS- 3, FFV 1, WS-Ready, NIBS, HELIDK, BWE, UWILD, HDC 10 t/m ² aft of Frame 126, SC, R2, TCM, ENVIRO, PMP+, CRC, SPS, Ice Class IC 2824KW	Fuel oil	2332 m ³
LOA	137.6 m	Pot water	1042 m ³
Breadth mld	27.0 m	Drill water	7291 m ³
Summer draught	8 m	Moonpool	1 x 8.4x8.4 m 1 x 4.8x4.8 m
Deadweight	9785 t	Offshore crane	400 t @ 3000 m water depth
Accommodation	129	Offshore crane II	100 t @ 3000 m water depth
Gross tonnage	14908	Pipe laying capability	Prepared for under deck carousel of 3000 t product, and ready for 275t vertical lay tower for deployment of flexible pipe or module handling
Main engines	Hybrid propulsion TBA kW		
Bow thruster	3 x 2750 kW		
Stern thruster	3 x 2000 kW		
Deck dimension	1925 m ²		



Skandi Installer

Vessel built	2017	Deck strength	10 t/m ²
Vessel design	Marin Teknikk 6027	Deck capacity	TBA t
Class definition	A1, Offshore Support Vessel, Supply, AMS, ACCU, DPS- 3, FFV 1, WS-Ready, NIBS, HELIDK, BWE, UWILD, HDC 10 t/m ² aft of Frame 126, SC, R2, TCM, ENVIRO, PMP+, CRC, SPS, Ice Class IC 2824KW	Fuel oil	2332 m ³
LOA	137.6 m	Pot water	1042 m ³
Breadth mld	27.0 m	Drill water	7291 m ³
Summer draught	8 m	Moonpool	1 x 8.4x8.4 m 1 x 4.8x4.8 m
Deadweight	9785 t	Offshore crane	400 t @ 3000 m water depth
Accommodation	120	Offshore crane II	100 t @ 3000 m water depth
Gross tonnage	14908	Pipe laying capability	Prepared for under deck carousel of 3000 t product, and ready for 275t vertical lay tower for deployment of flexible pipe or module handling
Main engines	Hybrid propulsion TBA kW		
Bow thruster	3 x 2750 kW		
Stern thruster	3 x 2000 kW		
Deck dimension	1925 m ²		



Skandi Inventor

Vessel built	2018	Deck strength	10 t/m ²
Vessel design	Marin Teknikk 6027	Deck capacity	TBA t
Class definition	A1, Offshore Support Vessel, Supply, AMS, ACCU, DPS- 3, FFV 1, WS-Ready, NIBS, HELIDK, BWE, UWILD, HDC 10 t/m ² aft of Frame 126, SC, R2, TCM, ENVIRO, PMP+, CRC, SPS, Ice Class IC 2824KW	Fuel oil	2332 m ³
LOA	137.6 m	Pot water	1042 m ³
Breadth mld	27.0 m	Drill water	7291 m ³
Summer draught	8 m	Moonpool	1 x 8.4x8.4 m 1 x 4.8x4.8 m
Deadweight	9785 t	Offshore crane	400 t @ 3000 m water depth
Accommodation	120	Offshore crane II	100 t @ 3000 m water depth
Gross tonnage	14908	Pipe laying capability	Prepared for under deck carousel of 3000 t product, and ready for 275t vertical lay tower for deployment of flexible pipe or module handling
Main engines	Hybrid propulsion TBA kW		
Bow thruster	3 x 2750 kW		
Stern thruster	3 x 2000 kW		
Deck dimension	1925 m ²		



Skandi Involver

Vessel built	2017	Deck dimension	1925 m ²
Vessel design	Marin Teknikk 6027	Deck strength	10 t/m ²
Class definition		Deck capacity	TBA t
A1, Offshore Support Vessel, Supply, AMS, ACCU, DPS- 3, FFV 1, WS-Ready, NIBS, HELIDK, BWE, UWILD, HDC 10 t/m ² aft of Frame 126, SC, R2, TCM, ENVIRO, PMP+, CRC, SPS, Ice Class IC 2824KW, COMF-V(2) C(2)		Fuel oil	2332 m ³
		Pot water	1042 m ³
		Drill water	7291 m ³
		Moonpool	1 x 8.4x8.4 m 1 x 4.8x4.8 m
LOA	137.6 m	Offshore crane	400 t @ 3000 m water depth
Breadth mld	27.0 m	Offshore crane II	100 t @ 3000 m water depth
Summer draught	8 m		
Deadweight	9785 t	Pipe laying capability	Prepared for under deck carousel of 3000 t product, and ready for 275t vertical lay tower for deployment of flexible pipe or module handling
Accommodation	120		
Gross tonnage	14908		
Main engines	Hybrid propulsion TBA kW		
Bow thruster	3 x 2750 kW		
Stern thruster	3 x 2000 kW		



Skandi Nexus

Vessel built	2010	Fuel oil	1481 m ³
Vessel design	Ulstein 745 CDL	Pot water	1292 m ³
Class definition	A1, Support Vessel, Supply-HNLS, AMS, ACCU, DPS-2, FFV 1, OSR-C1, UWILD, CRC(I), TCM, ENVIRO, Ice Class IC 2848.13 kW, PMP	Drill water	2381 m ³
LOA	90.2 m	Deck crane	2 x 1.5 t
Breadth mld	18.8 m	Offshore crane	50 t
Scantling draft	7.1 m		
Deadweight	4745 t		
Accommodation	36		
Gross tonnage	4323		
Main engines	TBA kW		
Bow thruster	1 x 883 kW		
Azimuth thruster	1 x 883 kW		
Stern thruster	2 x 590 kW		
Deck dimension	705 m ²		
Deck strength	5 - 10 t/m ²		
Deck capacity	2300 t		



Skandi Niteroi

Vessel built	2011	Fuel oil	2219 m ³
Vessel design	STX OSCV 06	Pot water	1849 m ³
Class definition	✱ 1A1 Clean(Design) COMF(C-3, V-3) Crane DK(+) DYNPOS(AUTRO) EO HELDK(S, H) SF	Helideck dim	21 m diam, Sikorsky-92 compatible
LOA	142.2 m	Moonpool	7.2 m x 7.2 m
Breadth mld	27.0 m	ROV hangar	2 x TRITON XLX Vehicles Total Area = 243 m ²
Summer draft	8.5 m	Deck crane	3 x SWL 3 t
Deadweight	9000 t	Offshore crane	SWL 250 t 2500 m
Accommodation	120	Offshore crane II	SWL 50/100 t 2000 m
Gross tonnage	15183	Tower	OSLT 270 t VLS
Main engines	2 x 3840 kW 4 x 2 880 kW		
Bow thruster	2 x 1900 kW		
Azimuth thruster	2 x 1500 kW		
Stern thruster	2 x 3700 kW		
Deck dimension	2100 m ²		
Deck strength	10 t/m ²		
Deck capacity	1725 t		



Skandi Nomad

Vessel built	2010	Fuel oil	1215 m ³
Vessel design	Ulstein 745 CDL	Pot water	1320 m ³
Class definition	A1, Support Vessel, Supply-HNLS, AMS, ACCU, DPS-2, FFV 1, OSR-C1, TCM, ENVIRO, Ice Class IC 2848.13 kW, SPS, PMP+	Drill water	3400 m ³
		Deck crane	2 x 1.5 t
		Offshore crane	200 t 3000 m
LOA	90.2 m		
Breadth mld	22.9 m		
Scantling draft	7.1 m		
Deadweight	4288 t		
Accommodation	60		
Gross tonnage	5903		
Main engines	TBA kW		
Bow thruster	1 x 883 kW		
Azimuth thruster	1 x 883 kW		
Stern thruster	2 x 590 kW		
Deck dimension	775 m ²		
Deck strength	5 - 10 t/m ²		
Deck capacity	1200 t		



Skandi Olinda

Vessel delivery	2019	Pot water	1200 m ³
Vessel design	VARD 3 16	Moonpool	7.2 m x 7.2 m
Class definition	✱ 1A1 E0 DYNPOS-AUTR DK (+) CRANE HELDK-SH BIS Clean(Design) NAUT-AW Comf-V(3) C(3) SPS ICS SF	Helideck dim	22 m diam
LOA	139.9 m	Deck crane	3 x SWL 3 t 1 x SWL 50 t
Breadth mld	28.0 m	Offshore crane	50 t @ 3000 m water depth
Summer draught	8.5 m	Laytower	340t tension, fold-able tower, 48m min hight ab sea level, approx 60m max height. Tower: 2x fully open type tensioners, remotely operated aligner wheel and end handling system. 380t A&R winch, 3000m water depth rated. Product capacity; 3x200t reels on deck + 2500t basket below deck.
Deadweight	12513 t		
Accommodation	120		
Gross tonnage	14957		
Main engines	6 x 2880 kW		
Bow thruster	2 x 2000 kW		
Azimuth thruster	2 x 1800 kW		
Stern thruster	2 x 3700 kW		
Deck dimensions	1800 m ²		
Deck strength	10 t/m ²		
Deck capacity	TBA		
Fuel oil	1700 m ³		



Skandi Olympia

Vessel built	2009	Base oil	143 m ³
Vessel design	MT 6009 L	Brine	424 m ³
Class definition	✘ 1A1 Clean COMF(V-3) DK(+) DYNPOS(AUTR) EO HL(2.5) NAUT(OSV(A)) SF	Methanol	205 m ³
LOA	79.6 m	Dry bulk	320 m ³ 5 x 64 m ³
Breadth mld	16.4 m	Deck crane	SWL 1.5 t SWL 3 t
Summer draught	6.2 m		
Deadweight	3700 t		
Accommodation	44		
Gross tonnage	3131		
Main engines	4 x 1424 kW		
Bow thruster	2 x 800 kW		
Azimuth thruster	2 x 1470 kW		
Deck dimension	718 m ²		
Deck strength	5 t/m ²		
Deck capacity	1600 t		
Fuel oil	1212 m ³		
Pot water	648 m ³		
Drill water	665 m ³		



Skandi Patagonia

Vessel built	2000	Pot water	1012 m ³
Vessel design	MT 6016	Drill water	1296 m ³
Class definition		Brine	500 m ³
✘ 1A1 DSV(III) Fire fighter(I)		Mud	161 m ³
Tug DK(+) DYNPOS(AUTR) EO		ORO	1100 m ³
HELDK HL(2.8) SF		Helideck dim	14.3 m diam
LOA	93.3 m	Moonpool	3.5 x 3.6 m
Breadth mld	19.7 m	ROV hangar	108 m ³
Summer draught	6.09 m	Deck crane	SWL 4 t SWL 5 t
Deadweight	3722 t	Offshore crane	SWL 50 t 1540 m
Accommodation	59	Diving bell	200 m, 3 pers
Gross tonnage	4641	Bollard pull	128 t
Main engines	2 x 1537 kW 2 x 3655 kW	AH drum	200 t
Stern thruster	2 x 3700 kW	Towing drum	200 t
Bow thruster	2 x 883 kW	Chain locker	2 x 44 m ³
Azimuth thruster	1 x 880 kW	Shark jaws	1 x 350 t
Deck dimension	560 m ²	Towing pins	1 x 240 t
Deck strength	5 t/m ²		
Deck capacity	2815 t		
Fuel oil	1657 m ³		



Skandi Recife

Vessel built	2018	Pot water	1200 m ³
Vessel design	VARD 3 16	Moonpool	7.2 m x 7.2 m
Class definition	✘ 1A1 E0 DYNPOS-AUTR DK (+) CRANE HELDK-SH BIS Clean(Design) NAUT-AW Comf-V(3) C(3) SPS ICS SF	Helideck dim	22 m diam
LOA	139.9 m	Deck crane	3 x SWL 3 t 1 x SWL 50 t
Breadth mld	28.0 m	Offshore crane	50 t @ 3000 m water depth
Summer draught	8.5 m	Laytower	340t tension, fold-able tower, 48m min high ab sea level, approx 60m max height. Tower: 2x fully open type tensioners, remotely operated aligner wheel and end handling system. 380t A&R winch, 3000m water depth rated. Product capacity; 3x200t reels on deck + 2500t basket below deck.
Deadweight	12513 t		
Accommodation	120		
Gross tonnage	14957		
Main engines	6 x 2880 kW		
Bow thruster	2 x 2000 kW		
Azimuth thruster	2 x 1800 kW		
Stern thruster	2 x 3700 kW		
Deck dimensions	1800 m ²		
Deck strength	10 t/m ²		
Deck capacity	N/A		
Fuel oil	1700 m ³		



Skandi Salvador

Vessel built	2009	Pot water	628 m ³
Vessel design	STX ROV06	Drill water	3682 m ³
Class definition	✱ 1A1 ICE-C Fire Fighter II SF LFL* COMF-V(3) HELDK EO DYNPOS-AUTR DK(+) HL(2.8)	Base oil	235 m ³
LOA	105.9 m	Brine	467 m ³
Breadth mld	21.0 m	Mud	600 m ³
Summer draught	6.6 m max	Ethanol	150 m ³
Deadweight	3600 t	Dry bulk	256 m ³
Accommodation	100	Helideck dim	21 m diam, Sikorsky-92 compatible
Gross tonnage	6802	Moonpool	7.2 x 7.2 m
Main engines	4 x 2780 kW	ROV hangar	168 m ²
Bow thruster	2 x 1500 kW	Deck crane	1 x SWL 3 t 1 x SWL 25 t
Azimuth thruster	1 x 1500 kW	Offshore crane	SWL 140 t 2545 m
Main propulsion	2 x 3000 kW	Offshore AHC Winch	SWL 250 t
Deck dimension	1000 m ²		
Deck strength	5 t/m ² - 10 t/m ²		
Deck capacity	1200 t		
Fuel oil	1292 m ³		



Skandi Seven

Vessel built	2008	Fuel oil	1864 m ³
Vessel design	STX OSCV 03	Pot water	796 m ³
Class definition		Helideck dim	20.9 m diam, 12.8 t
	✘ 1A1 Clean(Design) COMF(C-3, V-3) Crane DK(+) DYNPOS(AUTRO) EO HELDK(S, H) Ice(C) NAUT(AW) SF	Moonpool	(7.2 x 7.2 m) + (5.5 x 5.5 m)
LOA	120.7 m	ROV hangar	208 m ²
Breadth mld	23.0 m	Deck crane	2 x SWL 3 t
Summer draught	7.0 m	Offshore crane	SWL 250 t 2500 m
Deadweight	6000 t		
Accommodation	120		
Gross tonnage	9074		
Main engines	4 x 2880 kW		
Bow thruster	2 x 1500 kW		
Azimuth thruster	2 x 1900 kW		
Stern thruster	2 x 3000 kW		
Deck dimensions	1300 m ²		
Deck strength	10 t/m ²		
Deck capacity	3150 t		



Skandi Singapore

Vessel built	2011	Pot water	807 m ³
Vessel design	AKER DSV 06	Helideck dim	21 m diam, 12 t
Class definition	✘ 1A1 DSV(SAT, Surface) Clean(Design) COMF(V-3) DK(+) DYNPOS(AUTR) EO HELDK Ice(C) NAUT(AW)	Moonpool	(4.2 x 4.2 m)
LOA	107.1 m	ROV hangar	292 m ²
Breadth mld	21.0 m	Deck crane	1 x SWL 5.5 t
Summer draught	6.6 m		1 x SWL 3 t
Deadweight	3729 t	Offshore crane	SWL 140 t 2300 m
Accommodation	100	Diving system	18 men saturated diving system installed
Gross tonnage	7386		
Main engines	4 x 3150 kW		
Bow thruster	3 x 1500 kW		
Azimuth thruster	2 x 3000 kW		
Deck dimension	900 m ²		
Deck strength	5 - 10 t/m ²		
Deck capacity	2000 t		
Fuel oil	1153 m ³		



Skandi Skansen

Vessel built	2011	Fuel oil	2400 m ³
Vessel design	STX AH04	Pot water	965 m ³
Class definition	✱ 1A1 Supply vessel Tug Clean(Design) COMF(V-3) DK(+) DYNPOS(AUTR) EO HELDK(S, H) HL(2.8) NAUT(OSV(A)) SF TMON	Drill water	1200 m ³
LOA	107.2 m	Helideck dim	20.88 m diam, 12.8 t
Breadth mld	24.0 m	Moonpool	7.2 x 7.2 m
Summer draught	7.8 m	ROV hangar	66 m ²
Deadweight	4982 t	Deck crane	4 x SWL 3 t 2 x SWL 5 t
Accommodation	90	Offshore crane	SWL 250 t 2600 m
Gross tonnage	8222	Bollard pull	349 t
Main engines	2 x 7680 kW 4 x 2600 kW	AH drum	1 x 500 t
Bow thruster	2 x 1500 kW	Towing drum	2 x 500 t
Azimuth thruster	1 x 1500 kW	Chain locker	4 x 300 m ³
Stern thruster	2 x 1200 kW	Shark jaws	3 x 800 t
Deck dimension	1070 m ²	Towing pins	4 x 300 t
Deck strength	10 t/m ²	A-Frame	SWL 260 t (if mounted)
Deck capacity	3050 t		



Skandi Vinland

Vessel built	2017	Deck strength	10 t/m ²
Vessel design	VARD 3 08 Multi Purpose Vessel	Deck capacity	1400 t
Class definition	✘ 1A1 Fire fighter(I) SPS BIS BWM(T) Clean(Design) COMF(C-3, V-3) DK(+) DYNPOS(AUTR) EO Ice(1C) NAUT(OSV(A)) OILREC Recyclable SF	Fuel oil	1845 m ³
LOA	93.2 m	Pot water	710 m ³
Breadth mld	20.0 m	Drill water	1680 m ³
Summer draught	6.0 m	Brine (combined)	457 m ³
Deadweight	2970 t	Mud (combined)	457 m ³
Accommodation	55	ORO (combined)	457 m ³
Gross tonnage	5883	MEG (combined)	457 m ³
Main engines	2 x 1840 kW 4 x 2420 kW	Dry bulk	243 m ³
Bow thruster	2 x 880 kW	ROV hangar	1400 m ³
Azimuth thruster	2 x 880 kW	Deck crane	2 x SWL 3 t @ 12 m
Stern thruster	2 x 3000 kW	Offshore crane	SWL 100 t 500 m
Deck dimension	715 m ²	Bollard pull	115 t



Skandi Vitoria

Vessel built	2010	Fuel oil	2219 m ³
Vessel design	STX OSCV 06	Pot water	1849 m ³
Class definition		Helideck dim	21 m diam, Sikorsky-92 compatible
✘ 1A1 COMF(C-3, V-3) Crane DK(+) DYNPOS(AUTRO) EO HELDK(S, H) SF		Moonpool	7.2 m x 7.2 m
LOA	142.2 m	ROV hangar	2 x TRITON XLX Vehicles Total Area = 243 m ²
Breadth mld	27.0 m	Deck crane	2 x SWL 15 t
Summer draught	8.5 m	Offshore crane	SWL 250 t 2500 m
Deadweight	9000 t	Offshore crane II	SWL 50 t
Accommodation	120	Tower	IMECA 350 t VLS
Gross tonnage	15183		
Main engines	2 x 3840 kW 4 x 2880 kW		
Bow thruster	2 x 1900 kW		
Azimuth thruster	2 x 1500 kW		
Stern thruster	2 x 3700 kW		
Deck dimension	2100 m ²		
Deck strength	10 t/m ²		
Deck capacity	1725 t		

All specifications are subject to changes without prior notice.
Please contact DOF for details and verifications.

Cable-layer

A Cable-laying vessel is
a flexible platform for both transport and
installation work offshore.



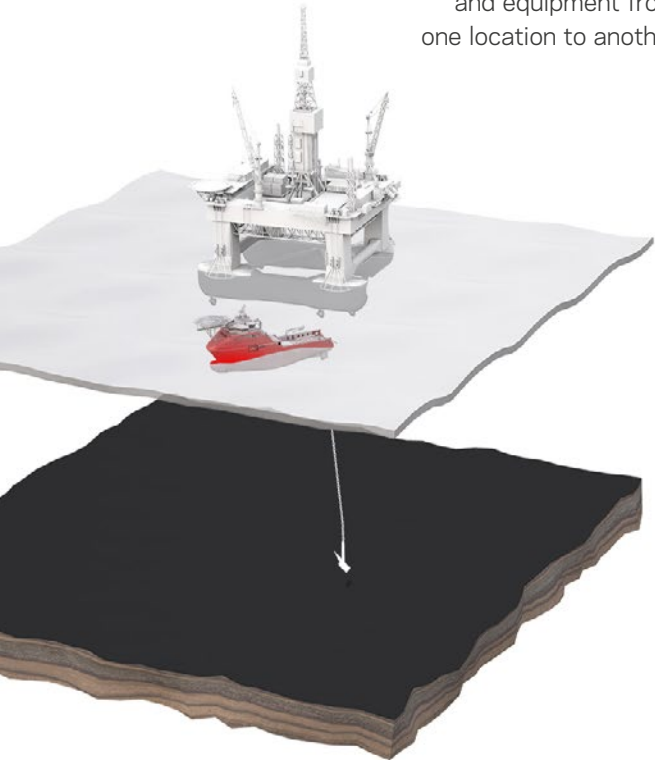
Skandi Connector

Vessel built	2016	Marine gas oil	1770 m ³
Vessel design	Damen	Dual basket carousel	Ability to load and lay two cables simultaneously
Class definition	A1, Offshore Support Vessel, Cably Lay, Supply, AMS, ACCU, DPS-2	Total basket capacity	7000 t
LOA	138.4 m	Deck crane	1 x 10 t
Breadth mld	27.5 m	Offshore crane	1 x 50 t 1 x 100 t
Scantling draught	6.3 m	A-frame	60 t
Deadweight	9317 t		
Accommodation	90		
Gross tonnage	10510		
Main engines	TBA kW		
Bow thruster	3 x 1250 kW		
Stern thruster	1 x 895 kW		
Deck dimensions	419 m ²		
Deck strength	20 t/m ²		
Deck capacity	8500 t		
Fuel oil	1433 m ³		
Fresh water	804 m ³		

All specifications are subject to changes without prior notice.
Please contact DOF for details and verifications.

AHTS

Anchor Handling Tug Supply vessels are used to set anchors for drilling rigs, tow mobile drilling rigs and wind turbines, and equipment from one location to another.





Skandi Amazonas

Vessel built	2011	Pot water	1077 m ³
Vessel design	STX AH12	Bollard pull	324 t
Class definition		AH drum	2 x 460 t
✳ 1A1 Tug Supply Vessel SF		Towing drum	1 x 500 t
COMF-V(3) E0 DYNPOS-AUTR		Chain locker	1078 m ³
NAUT-OSV(A) Clean(Design)		Shark jaws	2 x 800 t
DK(+) TMON		Towing pins	4 x 400 t
LOA	95.0 m	Deck crane	2 x SWL 5 t 1 x SWL 15 t
Breadth mld	24.1 m	Torpedo AH frame	Yes
Summer draught	7.8 m		
Deadweight	4700 t		
Accommodation	60		
Gross tonnage	7099		
Main engines	2 x 7680 kW		
Bow thruster	2 x 1200 kW		
Azimuth thruster	2 x 1500 kW		
Stern thruster	1 x 1200 kW		
Deck dimensions	750 m ²		
Deck strength	10 t/m ²		
Deck capacity	3000 t		
Fuel oil	1367 m ³		



Skandi Angra

Vessel built	2015	Fuel oil	1305 m ³
Vessel design	VARD AH11	Pot water	885 m ³
Class definition	✱ 1A1 Supply vessel Tug Clean(Design) COMF(V-3) DK(+) DYNPOS(AUTR) EO NAUT(OSV(A)) SF TMON	Drill water	3240 m ³
LOA	93.5 m	Bollard pull	280 t
Breadth mld	22.0 m	AH drum	1 x 500 t
Summer draught	7.9 m	Towing drum	2 x 460 t
Deadweight	4299 t	Chain locker	1100 m ³
Accommodation	30	Shark jaws	2 x 800 t
Gross tonnage	7334	Towing pins	2 x 400 t
Main engines	2 x 4500 kW 2 x 4000 kW	Deck crane	3 x SWL 5 t
Bow thruster	1 x 880 kW	Torpedo AH frame	Yes
Azimuth thruster	2 x 880 kW		
Stern thruster	1 x 880 kW		
Deck dimensions	760 m ²		
Deck strength	10 t/m ²		
Deck capacity	1750 t		



Skandi Botafogo

Vessel built	2006	Fuel oil	1072 m ³
Vessel design	UT 722 L	Pot water	573 m ³
Class definition	✘ 1A1 Tug Supply Vessel Fire Fighter I and II OILREC SF E0 DYNPOS-AUTR CLEAN TMON	Mud	470 m ³
LOA	80.4 m	Base oil	193 m ³
Breadth mld	18.0 m	Dry bulk	283 m ³
Summer draught	6.6 m	Brine	829 m ³
Deadweight	2660 t	Drill water	1277 m ³
Accommodation	40	Bollard pull	181 t
Gross tonnage	3519	AH drum	500 t
Main engines	2 x 3535 kW 2 x 2650 kW	Towing drum	400 t
Bow thruster	1 x 883 kW	Chain locker	570 m ³
Stern thruster	2 x 736 kW	Shark jaws	2 X 700 t
Azimuth thruster	1 x 1120 kW	Towing pins	4 x 300 t
Deck dimensions	590 m ²	Deck crane	SWL 10 t SWL 2 t
Deck strength	5 - 10 t/m ²		
Deck capacity	800 t		



Skandi Clipper

Vessel built	2014	Deck capacity	1180 t
Vessel design	Vik Sandvik 482 AHTS	Fuel oil	1685 m ³
Class definition	A1, Offshore Support Vessel, Supply-HNLS, TOW, AH, AMS, ACCU, DPS-2, FFV 1, OSR-C1, SSR GR A 300 HDC, Ice Class IC 4931 kW, UWILD, Oil Re- covery Capability Class 1, TCM, PMP+, HLC	Pot water	TBA m ³
		Dry bulk	300 m ³
		Brine	229 m ³
		Drill water	1541 m ³
		Bollard pull	180 t
		AH drum	400 t
LOA	84.9 m	Towing drum	2 x 400 t
Breadth mld	22 m	Chain locker	2 x 258 m ³
Scantling draught	8.0 m	Shark jaws	2 x 700 t
Deadweight	4167 t	Towing pins	2 x 300 t
Accommodation	44	Deck crane	TBA t
Gross tonnage	6490		
Main engines	TBA kW		
Bow thruster	2 x 880 kW		
Stern thruster	2 x 700 kW		
Deck dimensions	545 m ²		
Deck strength	15 t/m ²		



Skandi Cutter

Vessel built	2015	Deck capacity	1180 t
Vessel design	Vik Sandvik 482 AHTS	Fuel oil	1180 m ³
Class definition	A1, Offshore Support Vessel, Supply-HNLS, TOW, AH, AMS, ACCU, DPS-2, FFV 1, OSR-C1, SSR GR A 300 HDC, Ice Class IC 4931 kW, UWILD, Oil Re- covery Capability Class 1, TCM, PMP+, HLC	Pot water	TBA m ³
		Dry bulk	300 m ³
		Brine	229 m ³
		Drill water	1541 m ³
		Bollard pull	180 t
		AH drum	400 t
LOA	84.9 m	Towing drum	2 x 400 t
Breadth mld	22 m	Chain locker	2 x 254 m ³
Scantling draught	8.0 m	Shark jaws	2 x 700 t
Deadweight	4167 t	Towing pins	2 x 300 t
Accommodation	44	Deck crane	TBA t
Gross tonnage	6490		
Main engines	TBA kW		
Bow thruster	2 x 880 kW		
Stern thruster	2 x 700 kW		
Deck dimensions	545 m ²		
Deck strength	15 t/m ²		



Skandi Emerald

Vessel built	2011	Dry bulk	264 m ³
Vessel design	STX AH08	Brine	430 m ³
Class definition		Drill water	2019 m ³
	✘ 1A1 Fire fighter(I+, II)	Bollard pull	201 t
	Tug Clean(Design) DK(+)	AH drum	350 t
	DYNPOS(AUTR) EO HL(2.8)	Towing drum	350 t
	NAUT(OSV(A)) SF TMON	Chain locker	2 x 150 m ³
LOA	75.0 m	Shark jaws	2 x 600 t
Breadth mld	17.4 m	Towing pins	4 x 300 t
Summer draught	7.0 m	Deck crane	SWL 5 t
Deadweight	3195 t		SWL 3 t
Accommodation	27		
Gross tonnage	3195		
Main engines	2 x 6000 kW		
Bow thruster	2 x 880 kW		
Stern thruster	2 x 880 kW		
Deck dimensions	525 m ²		
Deck strength	10 t/m ²		
Deck capacity	1000 t		
Fuel oil	1685 m ³		
Pot water	641 m ³		



Skandi Fluminense

Vessel built	2007	Fuel oil	1126 m ³
Vessel design	UT 722 L	Pot water	641 m ³
Class definition	✘ 1A1 Tug Supply Vessel Fire Fighter I+ and II OILREC SF COMF-V(3) E0 DYNPOS-AUTR CLEAN TMON	Base oil	193 m ³
LOA	80.5 m	Mud	468 m ³
Breadth mld	18.0 m	Dry bulk	334 m ³
Summer draught	6.0 m	Brine	850 m ³
Deadweight	2659 t	Drill water	1467 m ³
Accommodation	40	Bollard pull	211 t
Gross tonnage	3519	AH drum	500 t
Main engines	2 x 3560 kW 2 x 2650 kW	Towing drum	400 t
Bow thruster	1 x 883 kW	Chain locker	570 m ³
Azimuth thruster	1 x 1120 kW	Shark jaws	2 x 700 t
Stern thruster	2 x 736 kW	Towing pins	4 x 300 t
Deck dimensions	590 m ²	Deck crane	SWL 10 t SWL 2 t
Deck strength	5 t/m ² - 10 t/m ²		
Deck capacity	800 t		



Skandi Iceman

Vessel built	2013	Deck strength	10 t/m ²
Vessel design	VARD AH12	Deck capacity	appr. 2300 t
Class definition	✕ 1A1 Fire fighter(I, II) Offshore service vessel(AHTS) SPS Clean(Design) COMF(C-3, V-3) DK(+) DYNPOS(AUTR) EO HL(2.8) Ice(1B) NAUT(OSV(A)) OILREC Recyclable SF TMON Winterized(Basic)	Fuel oil	1429 m ³ (combined tanks 2047 m ³)
LOA	93.5 m	Pot water	845 m ³
Breadth mld	24.0 m	Mud	618 m ³
Summer draught	6.5 m	Dry bulk	250 m ³
Deadweight	4000 t	Brine	618 m ³
Accommodation	45	Drill water	3462 m ³
Gross tonnage	8269	Bollard pull	319 t
Main engines	2 x 6000 kW 3 x 2850 kW	AH drum	500 t
Bow thruster	2 x 1200 kW	Towing drum	1 x 500 t / 1 x 450 t
Azimuth thruster	1 x 1200 kW	Chain lockers	4 x 250 m ³
Stern thruster	2 x 1200 kW	Shark jaws	2 x 600 t
Deck dimensions	780 m ²	Towing pins	2 x 400 t
		Deck crane	2 x SWL 5 t 1 x SWL 12 t
		A-frame	SWL 300 t
		NOFO compliant	Yes (2009)
		GMDSS zone	A4



Skandi Iguaçú

Vessel built	2012	Pot water	1077 m ³
Vessel design	STX AH12	Bollard pull	357 t
Class definition	✘ 1A1 Supply vessel Tug Clean(Design) COMF(V-3) DK(+) DYNPOS(AUTR) EO NAUT(OSV(A)) SF TMON	AH drum	2 x 460 t
LOA	95.0 m	Towing drum	1 x 500 t
Breadth mld	24.0 m	Chain locker	1078 m ³
Summer draught	7.8 m	Shark jaws	2 x 800 t
Deadweight	4700 t	Towing pins	2 x 400 t
Accommodation	60	Deck crane	2 x SWL 5 t 1 x SWL 15 t
Gross tonnage	7099	Torpedo AH frame	Yes
Main engines	2 x 7680 kW		
Bow thruster	2 x 1200 kW		
Azimuth thruster	2 x 1500 kW		
Stern thruster	1 x 1200 kW		
Deck dimensions	750 m ²		
Deck strength	10 t/m ²		
Deck capacity	3000 t		
Fuel oil	1367 m ³		



Skandi Ipanema

Vessel built	2010	Dry bulk	216 m ³
Vessel design	STX AH05	Brine	549 m ³
Class definition		Base oil	266 m ³
✕ 1A1 Fire fighter(I) Tug DK(+)		Drill water	660 m ³
DYNPOS(AUT) EO SF TMON		Bollard pull	174 t
LOA	74.3 m	AH drum	310 t
Breadth mld	17.0 m	Towing drum	310 t
Summer draught	6.0 m	Chain locker	2 x 139 m ³
Deadweight	2250 t	Shark jaws	2 x Karmoy
Accommodation	38	Towing pins	4 x Karmoy, 350 mm / 270 t SWL
Gross tonnage	2771	Deck crane	1 x SWL 5 t 1 x SWL 1.5 t
Main engines	2 x 4500 kW		
Bow thruster	1 x 880 kW		
Azimuth thruster	1 x 905 kW		
Stern thruster	1 x 880 kW		
Deck dimensions	654 m ²		
Deck strength	7.5 t/m ² -10 t/m ²		
Deck capacity	1000 t		
Fuel oil	850 m ³		
Pot water	741 m ³		



Skandi Laser

Vessel built	2010	Brine	752 m ³
Vessel design	Maersk Shipdesign	Base oil	898 m ³
Class definition	A1, Offshore Support Vessel, Supply-HNLS, TOW, AMS, ACCU, DPS-2, AH, UWILD, TCM, PMP+, BWT	Drill water	3064 m ³
LOA	90.8 m	Bollard pull	252 t
Breadth mld	23 m	AH drum	500 t
Draft scantling	7.8 m	Towing drum	500 t
Deadweight	4432 t	Chain locker	2 x 338 m ³
Accommodation	70	Shark jaws	2 x 700 t
Gross tonnage	6890	Towing pins	2 x 300 t
Main engines	TBA kW	Deck crane	2 x 5 t 1 x 15 t
Bow thruster	2 x 1500 kW		
Stern thruster	1 x 880 kW		
Deck dimensions	810 m ²		
Deck strength	15 t/m ² -10 t/m ²		
Deck capacity	2080 t		
Fuel oil	1824 m ³		



Skandi Lifter

Vessel built	2009	Brine	752 m ³
Vessel design	Maersk Shipdesign	Base oil	898 m ³
Class definition	A1, Offshore Support Vessel, Supply-HNLS, TOW, AMS, ACCU, DPS-2, OSR-C1, UWILD, TCM, PMP+, BWT	Drill water	3124 m ³
LOA	90.3 m	Bollard pull	255 t
Breadth mld	23 m	AH drum	500 t
Draft scantling	7.8 m	Towing drum	500 t
Deadweight	4432 t	Chain locker	2 x 338 m ³
Accommodation	70	Shark jaws	2 x 700 t
Gross tonnage	6890	Towing pins	2 x 300 t
Main engines	TBA kW	Deck crane	2 x 5 t 1 x 15 t
Bow thruster	2 x 1500 kW		
Stern thruster	1 x 880 kW		
Deck dimensions	810 m ²		
Deck strength	15 t/m ² -10 t/m ²		
Deck capacity	2080 t		
Fuel oil	1893 m ³		



Skandi Logger

Vessel built	2009	Brine	752 m ³
Vessel design	Maersk Shipdesign	Base oil	898 m ³
Class definition	A1, Offshore Support Vessel, Supply-HNLS, TOW, AMS, ACCU, DPS-2, FFV 1(I), UWILD, TCM, PMP+, BWT	Drill water	3124 m ³
LOA	90.3 m	Bollard pull	251 t
Breadth mld	23 m	AH drum	500 t
Draft scantling	7.8 m	Towing drum	500 t
Deadweight	4370 t	Chain locker	2 x 338 m ³
Accommodation	70	Shark jaws	2 x 700 t
Gross tonnage	68921	Towing pins	2 x 300 t
Main engines	TBA kW	Deck crane	2 x 5 t 1 x 15 t
Bow thruster	2 x 1500 kW		
Stern thruster	1 x 880 kW		
Deck dimensions	810 m ²		
Deck strength	15 t/m ² -10 t/m ²		
Deck capacity	2080 t		
Fuel oil	1893 m ³		



Skandi Mariner

Vessel built	2017	Deck capacity	2500 t
Vessel design	Salt Ship Design 200	Fuel oil	2608 m ³
Class definition	A1, Offshore Support Vessel, Supply, TOW, AH, AMS, ACCU, DPS-2, FFV 1, OSR-C1, SSR GR A 300 HDC, Ice Class IC 4931 kW, UWILD, ENVIRO, SPS, IHM, TCM, PMP+, HLC	Dry bulk	310 m ³
		Brine	1553 m ³
		Drill water	3510 m ³
		Bollard pull	241 t
		AH drum	450 t
		Towing drum	2 x 500 t
LOA	95.0 m	Chain locker	2 x 286 m ³ 2 x 322 m ³
Breadth mld	25 m	Shark jaws	2 x 700 t
Summer draught	8.7 m	Towing pins	2 x 300 t
Deadweight	4910 t	Deck crane	2 x 2 t 1 SWL x 42 t
Accommodation	52		
Gross tonnage	10181		
Main engines	2x3880 kW 2x3230 ekW 1x1580 ekW		
Bow thruster	3 x 1200 kW		
Stern thruster	2 x 1200 kW		
Deck dimensions	924 m ²		
Deck strength	10 t/m ²		



Skandi Master

Vessel built	2017	Deck capacity	2500 t
Vessel design	Salt Ship Design 200	Fuel oil	2608 m ³
Class definition	A1, Offshore Support Vessel, Supply, TOW, AH, AMS, ACCU, DPS-2, FFV 1, OSR-C1, SSR GR A 300 HDC, Ice Class IC 4931 kW, UWILD, ENVIRO, SPS, IHM, TCM, PMP+, HLC	Dry bulk	310 m ³
		Brine	1553 m ³
		Drill water	3510 m ³
		Bollard pull	252 t
		AH drum	450 t
		Towing drum	2 x 500 t
LOA	95.0 m	Chain locker	2 x 286 m ³ 2 x 322 m ³
Breadth mld	25 m	Shark jaws	2 x 700 t
Summer draught	8.7 m	Towing pins	2 x 300 t
Deadweight	4910 t	Deck crane	2 x 2 t 1 SWL x 42 t
Accommodation	52		
Gross tonnage	10181		
Main engines	2x3880 kW 2x3230 ekW 1x1580 ekW		
Bow thruster	3 x 1200 kW		
Stern thruster	2 x 1200 kW		
Deck dimensions	924 m ²		
Deck strength	10 t/m ²		



Skandi Minder

Vessel built	2018	Deck capacity	2500 t
Vessel design	Salt Ship Design 200	Fuel oil	2608 m ³
Class definition A1, Offshore Support Vessel, Supply, TOW, AH, AMS, ACCU, DPS-2, FFV 1, OSR-C1, SSR GR A 300 HDC, Ice Class IC 4931 kW, UWILD, ENVIRO, SPS, IHM, TCM, PMP+, HLC		Dry bulk	310 m ³
		Brine	1553 m ³
		Drill water	3510 m ³
		Bollard pull	270 t
		AH drum	450 t
		Towing drum	2 x 500 t
LOA	95.0 m	Chain locker	2 x 286 m ³ 2 x 322 m ³
Breadth mld	25 m	Shark jaws	2 x 700 t
Summer draught	8.7 m	Towing pins	2 x 300 t
Deadweight	4910 t	Deck crane	2 x 2 t 1 SWL x 42 t
Accommodation	52		
Gross tonnage	10181		
Main engines	2x3880 kW 2x3230 ekW 1x1580 ekW		
Bow thruster	3 x 1200 kW		
Stern thruster	2 x 1200 kW		
Deck dimensions	924 m ²		
Deck strength	10 t/m ²		



Skandi Mobiliser

Vessel built	2018	Deck capacity	2500 t
Vessel design	Salt Ship Design 200	Fuel oil	2608 m ³
Class definition	A1, Offshore Support Vessel, Supply, TOW, AH, AMS, ACCU, DPS-2, FFV 1, OSR-C1, SSR GR A 300 HDC, Ice Class IC 4931 kW, UWILD, ENVIRO, SPS, IHM, TCM, PMP+, HLC	Dry bulk	310 m ³
		Brine	1553 m ³
		Drill water	3510 m ³
		Bollard pull	260 t
		AH drum	450 t
		Towing drum	2 x 500 t
LOA	95.0 m	Chain locker	2 x 286 m ³ 2 x 322 m ³
Breadth mld	25 m	Shark jaws	2 x 700 t
Summer draught	8.7 m	Towing pins	2 x 300 t
Deadweight	4910 t	Deck crane	2 x 2 t 1 SWL x 42 t
Accommodation	52		
Gross tonnage	10181		
Main engines	2x3880 kW 2x3230 ekW 1x1580 ekW		
Bow thruster	3 x 1200 kW		
Stern thruster	2 x 1200 kW		
Deck dimensions	924 m ²		
Deck strength	10 t/m ²		



Skandi Mover

Vessel built	2018	Deck capacity	2500 t
Vessel design	Salt Ship Design 200	Fuel oil	2608 m ³
Class definition	A1, Offshore Support Vessel, Supply, TOW, AH, AMS, ACCU, DPS-2, FFV 1, OSR-C1, SSR GR A 300 HDC, Ice Class IC 4931 kW, UWILD, ENVIRO, SPS, IHM, TCM, PMP+, HLC	Dry bulk	310 m ³
		Brine	1553 m ³
		Drill water	3510 m ³
		Bollard pull	253 t
		AH drum	450 t
		Towing drum	2 x 500 t
LOA	95.0 m	Chain locker	2 x 286 m ³ 2 x 322 m ³
Breadth mld	25 m	Shark jaws	2 x 700 t
Summer draught	8.7 m	Towing pins	2 x 300 t
Deadweight	4910 t	Deck crane	2 x 2 t 1 SWL x 42 t
Accommodation	52		
Gross tonnage	10181		
Main engines	2x3880 kW 2x3230 ekW 1x1580 ekW		
Bow thruster	3 x 1200 kW		
Stern thruster	2 x 1200 kW		
Deck dimensions	924 m ²		
Deck strength	10 t/m ²		



Skandi Paraty

Vessel delivery	2016	Fuel oil	1305 m ³
Vessel design	VARD AH11	Pot water	870 m ³
Class definition		Drill water	3240 m ³
✘ 1A1 SF SUPPLY VESSEL TUG		Bollard pull	288 t
EO DYNPOS-AUTR		AH drum	500 t
COMF-V(3) Clean(Design)		Towing drum	460 t
NAUT-OSV (T) DK(+) TMON		Chain locker	1100 m ³
LOA	93.5 m	Shark jaws	2 x 800 t
Breadth mld	22.0 m	Towing pins	2 x TBA
Summer draught	7.9 m	ROV hangar	Yes
Deadweight	4981 t	Deck crane	3 x SWL 5 t
Accommodation	46	Torpedo AH frame	Yes
Gross tonnage	TBA		
Main engines	2 x 4500 kW 2 x 4000 kW		
Bow thruster	1 x 880 kW		
Azimuth thruster	2 x 880 kW		
Stern thruster	1 x 880 kW		
Deck dimensions	760 m ²		
Deck strength	10 t/m ²		
Deck capacity	TBA		



Skandi Peregrino

Vessel built	2010	Pot water	810 m ³
Vessel design	STX AH08	Base oil	230 m ³
Class definition	✕ 1A1 Fire fighter(I+) Tug Clean(Design) COMF(V-3) DK(+) DYNPOS(AUTR) EO HL(2.8) NAUT(OSV(A)) OILREC SF TMON	Mud	460 m ³
LOA	75.0 m	Dry bulk	264 m ³
Breadth mld	17.4 m	Brine	460 m ³
Summer draught	7.0 m	Drill water	1970 m ³
Deadweight	3051 t	Bollard pull	186 t
Accommodation	27	AH drum	350 t
Gross tonnage	3181	Towing drum	350 t
Main engines	2 x 6000 kW	Chain locker	2 x 150 m ³
Bow thruster	1 x 880 kW	Shark jaws	2 x 600 t
Azimuth thruster	1 x 880 kW	Towing pins	4 x 300 t
Stern thruster	2 x 880 kW	Deck crane	SWL 5 t SWL 3 t
Deck dimension	525 m ²		
Deck strength	10 t/m ²		
Deck capacity	700 t		
Fuel oil	1700 m ³		



Skandi Rio

Vessel built	2007	Fuel oil	1124 m ³
Vessel design	UT 722 L	Pot water	647 m ³
Class definition	✘ 1A1 Tug Supply Vessel Fire Fighter I and II OILREC SF COMF-V(3) EO DYNPOS-AUTR CLEAN TMON	Base oil	193 m ³
LOA	80.5 m	Mud	445 m ³
Breadth mld	18.0 m	Dry bulk	334 m ³
Summer draught	6.6 m	Brine	872 m ³
Deadweight	2660 t	Drill water	1330 m ³
Accommodation	40	Bollard pull	206 t
Gross tonnage	3519	AH drum	500 t
Main engines	2 x 3535 kW 2 x 2650 kW	Towing drum	400 t
Bow thruster	1 x 883 kW	Chain locker	570 m ³
Azimuth thruster	1 x 1120 kW	Shark jaws	2 x 700 t
Stern thruster	2 x 736 kW	Towing pins	4 x 300 t
Deck dimensions	590 m ²	Deck crane	SWL 10 t SWL 2 t SWL 3 t
Deck strength	5 t/m ² - 10 t/m ²		
Deck capacity	800 t		



Skandi Saltfjord

Vessel built	2011	Base oil	193 m ³
Vessel design	AH 12 CD	Mud	764 m ³
Class definition		Brine	764 m ³
✘ 1A1, SF, SUPPLY VESSEL, TUG, E0, DYNPOS-AUTR, Comf V(3), CLEAN DESIGN, NAUT OSV, DK(+), HL(2.8)		Drill water	295 m ³
		Bollard pull	390 t
		AH drum	2500 t
LOA	95.0 m	Towing drum	2500 t
Breadth mld	24.0 m	Deck crane	1 x SWL 10 t 2 x SWE 5 t
Summer draught	7.8 m		
Deadweight	4800 t		
Accommodation	70		
Gross tonnage	7800		
Main engines	2 x 7680 kW		
Bow thruster	1 x 1500 kW		
Azimuth thruster	1 x 1200 kW		
Stern thruster	3 x 1200 kW		
Deck dimensions	750 m ²		
Deck strength	10 t/m ²		
Fuel oil	1959 m ³		
Pot water	1507 m ³		



Skandi Urca

Vessel built	2014	Fuel oil	1305 m ³
Vessel design	VARD AH11	Pot water	870 m ³
Class definition	✕ 1A1 SF SUPPLY VESSEL TUG E0 DYNPOS-AUTR COMF-V(3) Clean(Design) NAUT-OSV (T) DK(+) TMON	Drill water	3240 m ³
LOA	93.5 m	Bollard pull	260 t
Breadth mld	22.0 m	AH drum	2 x 460 t
Summer draught	7.9 m	Towing drum	1 x 400 t
Deadweight	4600 t	Chain locker	1100 m ³
Accommodation	30	Shark jaws	2 x 800 t
Gross tonnage	4300 t	Towing pins	2 x 400 t
Main engines	2 x 4500 kW 2 x 4000 kW	Deck crane	3 x SWL 5 t
Bow thruster	1 x 880 kW	Torpedo AH frame	Yes
Azimuth thruster	2 x 880 kW		
Stern thruster	1 x 880 kW		
Deck dimensions	760 m ²		
Deck strength	10 t/m ²		
Deck capacity	1700 t		



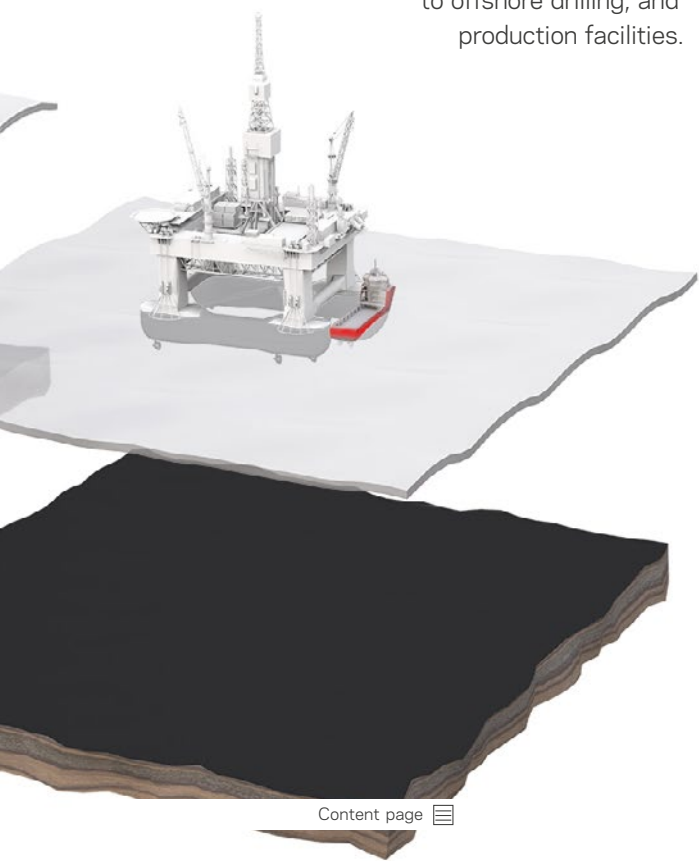
Skandi Vega

Vessel built	2010	Fuel oil	1.219 m ³
Vessel design	STX AH04	Pot water	987 m ³
Class definition	✘ 1A1 Supply vessel Tug Clean(Design) COMF(V-3) DK(+) DYNPOS(AUTR) EO HL(2.8) NAUT(OSV(A)) SF TMON	Mud	602 m ³
LOA	109.5 m	Brine	602 m ³
Breadth mld	24.0 m	Drill water	3500 m ³
Summer draught	7.8 m	Moon pool	7.2 x 7.2 m
Deadweight	5750 t	ROV hangar	68 m ²
Accommodation	88	Bollard pull	353 t
Gross tonnage	8164	AH drum	1 x 500 t
Main engines	2 x 7680 kW 4 x 2600 kW	Towing drum	2 x 500 t
Bow thruster	2 x 1500 kW	Chain lockers	4 x 299 m ³
Azimuth thruster	1 x 1.500 kW	Shark jaws	3 x 600 t
Stern thruster	2 x 1200 kW	Towing pins	6 x 300 t
Deck dimensions	1.070 m ²	AH frame	200 t /3.5 x 4 m lift
Deck strength	10 t/m ²	Deck crane	1 x knucklelel- boom 2 x Cargo roll 1 x SWL 3 t
Deck capacity	3050 t		

All specifications are subject to changes without prior notice.
Please contact DOF for details and verifications.

PSV

Platform Supply Vessels transport
oil field products and supplies
to offshore drilling, and
production facilities.





Skandi Barra

Vessel built	2005	Pot water	892 m ³
Vessel design	MT 6000 MK II	Base oil	204 m ³
Class definition		Methanol	162 m ³
✘ 1A1 Clean COMF(V-3) DK(+)		Dry bulk	396 m ³
DYNPOS(AUTR) EO HL(2.5,2.8)		Drill water	1188 m ³
LFL(*) SF		Brine	646 m ³
LOA	86.65 m	Crane	SWL 1 t SWL 3 t
Breadth mld	19.7 m		
Summer draught	6.18 m		
Deadweight	4150 t		
Accommodation	24		
Gross tonnage	3350		
Main engines	4 x 1530 kW		
Bow thruster	1 x 880 kW		
Azimuth thruster	1 x 883 kW		
Deck dimension	941 m ²		
Deck strength	5 t/m ²		
Deck capacity	3164 t		
Fuel oil	1230 m ³		
Mud	654 m ³		



Skandi Caledonia

Vessel built	2003	Pot water	983 m ³
Vessel design	MT 6000	Base oil	196 m ³
Class definition		Methanol	163 m ³
✱ 1A1 SF LFL* COMF-V(3) E0		Dry bulk	397 m ³
DYNPOS-AUTR CLEAN DK(+)		Drill water	1009 m ³
HL(2.0, 2.8)		Brine	720 m ³
LOA	83.9 m	Crane	2 x SWL 3 t
Breadth mld	19.7 m		
Summer draught	6.1 m		
Deadweight	4135 t		
Accommodation	24		
Gross tonnage	3285		
Main engines	4 x 1530 kW		
Bow thruster	1 x 883 kW		
Azimuth thruster	1 x 883 kW		
Stern thruster	2 x 2200 kW		
Deck dimensions	907 m ²		
Deck strength	5 t/m ²		
Deck capacity	3400 t		
Fuel oil	1270 m ³		
Mud	653 m ³		



Skandi Feistein

Vessel built	2011	Fuel oil	858 m ³
Vessel design	STX PSV 09 CD	Mud	795 m ³
Class definition		Pot water	720 m ³
✘ 1A1 Clean(Design) COMF(V-3)		Base oil	189 m ³
DK(+) DYNPOS(AUTR) EO		Methanol	167 m ³
HL(2.8) LFL(*) NAUT(OSV(A))		Dry bulk	325 m ³
OILREC SF		Drill water	1924 m ³
LOA	87.9 m	Brine	187 m ³
Breadth mld	19.0 m	Crane	SWL 1 t SWL 5 t
Summer draught	6.6 m		
Deadweight	4623 t		
Accommodation	26		
Gross tonnage	3959		
Main engines	4 x 1665 kW		
Bow thruster	1 x 880 kW		
Azimuth thruster	1 x 880 kW		
Stern thruster	2 x 2200 kW		
Deck dimension	1000 m ²		
Deck strength	5 t/m ² - 10 t/m ²		
Deck capacity	2600 t		



Skandi Flora

Vessel built	2009	Fuel oil	900 m ³
Vessel design	STX PSV 06 CD	Mud	1506 m ³
Class definition		Pot water	851 m ³
✘ 1A1 Supply vessel		Base oil	266 m ³
Clean(Design) COMF(V-3) DK(+)		Methanol	230 m ³
DYNPOS(AUTR) EO HL(2.8)		Dry bulk	404 m ³
LFL(*) OILREC SF		Drill water	1980 m ³
LOA	94.9 m	Brine	1506 m ³
Breadth mld	20.0 m	Crane	2 x SWL 10 t
Summer draught	6.53 m	NOFO compliant	Yes
Deadweight	5150 t		
Accommodation	25		
Gross tonnage	4469		
Main engines	4 x 1 980 kW		
Bow thruster	2 x 880 kW		
Azimuth thruster	1 x 880 kW		
Stern thruster	2 x 2200 kW		
Deck dimension	1025 m ²		
Deck strength	10 t/m ²		
Deck capacity	3200 t		



Skandi Kvitsøy

Vessel built	2012	Fuel oil	1054 m ³
Vessel design	STX PSV 09 CD	Mud	980 m ³
Class definition		Pot water	1002 m ³
✘ 1A1 Clean(Design) COMF(V-3)		Base oil	189 m ³
DK(+) DYNPOS(AUTR) EO		Methanol	167 m ³
HL(2.8) LFL(*) NAUT(OSV(A))		Dry bulk	325 m ³
OILREC SF		Drill water	2836 m ³
LOA	87.9 m	Brine	980 m ³
Breadth mld	19.0 m	Crane	SWL 1 t SWL 5 t
Summer draught	6.6 m	NOFO compliant	Yes
Deadweight	4700 t		
Accommodation	26		
Gross tonnage	3958		
Main engines	4 x 2095 kW		
Bow thruster	2 x 880 kW		
Azimuth thruster	1 x 880 kW		
Stern thruster	2 x 2200 kW		
Deck dimension	950 m ²		
Deck strength	5 t/m ² - 10 t/m ²		
Deck capacity	2600 t		



Skandi Marøy

Vessel built	2012	Deck capacity	1650 t
Vessel design	STX MRV 05 CD	Fuel oil	1145 m ³
Class definition	✘ 1A1 Fire fighter(I, II) Offshore service vessel Standby vessel Clean(Design) COMF(V-3) DK(+) DYNPOS(AUTR) EO HL(2.8) NAUT(OSV(A)) OILREC SF	Mud	537 m ³
LOA	82.2 m	Pot water	897 m ³
Breadth mld	17.0 m	Base oil	276 m ³
Summer draught	6.3 m	Dry bulk	304 m ³
Deadweight	3588 t	Drill water	1533 m ³
Accommodation	28	Brine	275 m ³
Gross tonnage	3588	Crane	SWL 2 t SWL 3 t
Main engines	2 x 2600 kW 1 x 1665 kW	ORO	1547 m ³
Bow thruster	2 x 880 kW	NOFO compliant	Yes
Azimuth thruster	1 x 1200 kW		
Stern thruster	2 x 2200 kW		
Deck dimension	600 m ²		
Deck strength	5 - 10 t/m ²		



Skandi Mongstad

Vessel built	2008	Deck capacity	3400 t
Vessel design	Vik-Sandvik PSV 495 DEM	Fuel oil	1167 m ³
Class definition	✘ 1A1 Tug Supply Vessel Standby Vessel(S) Fire Fighter II OILREC SF LFL* COMF-V(3)C(3) EO DYNPOS-AUTR Clean(Design) DK(+) HL(2.8) TMON	Mud	876.5 m ³
		Pot water	892 m ³
		Base oil	220 m ³
		Methanol	203 m ³
		Dry bulk	366 m ³
LOA	96.9 m	Drill water	2587 m ³
Breadth mld	21.0 m	Brine	477 m ³
Summer draught	7.0 m	Crane	2 x SWL 10 t
Deadweight	4423 t	NOFO compliant	Standard 2005
Accommodation	24		
Gross tonnage	4859		
Main engines	2 x 1600 kW		
Bow thruster	2 x 883 kW		
Azimuth thruster	3 x 1200 kW		
Stern thruster	1 x 590 kW		
Deck dimension	1176 m ²		
Deck strength	10 m ²		



Skandi Nova

Vessel built	2012	Deck strength	5 t/m ²
Vessel design	STX MRV 05 SP	Deck capacity	1150 t
Class definition	✘ 1A1 Fire fighter(I, II) Offshore service vessel SPS Standby vessel Clean(Design) COMF(V-3) DK(+) DYNPOS(AUTR) E0 HL(2.8) NAUT(OSV(A)) SF	Fuel oil	857 m ³
		Mud	594 m ³
		Pot water	1116 m ³
		Base oil	415 m ³
		Dry bulk	302 m ³
		Drill water	1490 m ³
LOA	82.2 m	Brine	270 m ³
Breadth mld	17.0 m	Crane	SWL 2 t SWL 3 t
Summer draught	6.1 m		
Deadweight	3100 t		
Accommodation	46		
Gross tonnage	3788		
Main engines	2 x 2600 kW 1 x 1665 kW		
Bow thruster	2 x 880 kW		
Azimuth thruster	1 x 1200 kW		
Stern thruster	2 x 2200 kW		
Deck dimension	600 m ²		

Contacts

NORWAY

DOF Group ASA *

Alfabygget
5392 Storebø
NORWAY
Phone: +47 56 18 10 00
management@dof.com

DOF Subsea AS *

Thormøhlensgate 53 C
5006 Bergen
NORWAY
Phone: +47 55 25 22 00

DOF Subsea Norway AS

Thormøhlensgate 53 C
5006 Bergen
NORWAY
Phone: +47 55 25 22 00

DOF Management AS *

Alfabygget
5392 Storebø
NORWAY

Thormøhlensgate 53 C
5006 Bergen
NORWAY
Phone: +47 56 18 10 00
management@dof.com

ANGOLA

DOF Subsea Angola

Belas Business Park-Talatona
Edificio Bengo, 1º Andar
Sala 106/107, Luanda
REPUBLIC OF ANGOLA
Phone/Fax: +244 222 43 28 58
Mobile: +244 227 28 00 96
+244 277 28 00 95

AUSTRALIA

DOF Australia Pty Ltd

181 St. Georges Tce
Perth, Wa 6000
AUSTRALIA
Phone: +61 8 9278 8700

ARGENTINA

DOF Management Argentina S.A.

Peron 315, piso 1, Oficina 6-b
1038 - Buenos Aires
ARGENTINA
Phone: +54 11 4342 4622

** The head offices for companies in the DOF Group are in Norway.*

BRAZIL

NorSkand Offshore Ltda

Rua Lauro Muller
116, 17 andar
Torre do Rio Sul - Botafogo
Rio de Janeiro, R.J.
BRAZIL - CEP 22290-160
Phone: +55 212103 5700

DOF Subsea Brasil Servios Ltda

Rua Fiscal Juca, 330
Q: W2 - L: 0001
Loteamento Novo Cavaleiros
Vale Encantado - Maca/RJ
BRAZIL - CEP 27933-450
Phone: +55 22 2123 0100

CANADA

DOF Subsea Canada

73 Bremigen's Boulevard
Paradise, Newfoundland
CANADA A1L 4A2
Phone: +1 709 606 20010

DENMARK

DOF Denmark A/S

VISITING ADDRESS:
Sundkrogsgade 7-9
2100 Kbenhavn
DENMARK

MAILING ADDRESS:

Esplanaden 50
1263 Kbenhavn
DENMARK

SINGAPORE

DOF Asia Pacific Pte Ltd

150 Beach Road
#14-01/03 Gateway West
SINGAPORE 189720
Phone: +65 6561 2780

UNITED KINGDOM

DOF (UK) Ltd

Horizons House
81-83 Waterloo Quay
Aberdeen, AB11 5DE
UNITED KINGDOM
Phone: +44 1224 586 644

DOF Subsea UK Ltd

Horizons House
81-83 Waterloo Quay
Aberdeen, AB11 5DE
UNITED KINGDOM
Phone: +44 1224 614 000

USA

DOF Subsea USA Inc

5365 W. Sam Houston Parkway N
Suite 400, Houston
Texas 77041
USA
Phone: +1 713 896 2500



www.dof.com

Content page 