

DS-1200 G5iQ



quadrent

Folder Inserter

# The next generation in high-volume mail production



**EXPERIENCE**  
A rich history of  
world-class leadership



**PROVEN RESULTS**  
97% customer  
satisfaction rate



**EXPERTISE**  
7 trillion personalized  
experiences annually



**BACKED BY THE EXPERTS**  
Gartner, IDC, Forrester,  
and Aspire

# Maximize productivity and minimize downtime

Bring your production mail center up to the latest standards in productivity, intelligence, and automation with Quadient's DS-1200 G5iQ. The most flexible and modular production folder inserter on the market today. Whether your communications are transactional, correspondence, or marketing-related, the DS-1200 G5iQ meets your business's demands with ease and outperforms the competition every step of the way.



## Quick Facts:

- Cycling speed up to 12,000 pieces/hour
- High accumulation speeds up to 32,000 sheets/hour
- Easy-to-use display and graphic interface
- Unlimited job storage and recall at the touch of a button
- Job changeovers in a matter of seconds
- Modular design (up to 16 stations) allows you to scale at any time
- Lowest decibel level among competitive inserters

## Process a wider array of applications

The DS-1200 G5iQ has the fastest job changeover capability compared to any other production mail solution so you can significantly accelerate throughput and maximize your return on investment.

Effortlessly switch from a job using a #10 envelope to one using a 6" x 9.5" with different documents, folds, and inserts—all in no time. The DS-1200 G5iQ supports envelope sizes from as small as A6 up to full flats along with a wide range of inserts. The Full Format module can insert 80 sheets and up to 8 inserts into full flats with a pack thickness of up to 10 mm.





# Powerful performance in a compact footprint

Engineered for high demand environments, from efficient paper loading to predictive intelligence, the DS-1200 G5iQ brings your mail production center up to the latest standards of productivity, intelligence, and flexibility.

## 2. Automatic Camera Positioning

The multi-camera system adjusts to read all types of bar codes or optical marks anywhere on the page.

## 1. Insert Feeders

Up to 16 feeders with a maximum capacity of 20" or 40" for items not requiring folding. Can be refilled on the fly.

## 3. Sheet Feeder

Plug & play. Transport up to 5,000 sheets between your printer and inserter. The high-capacity mobile trolley system provides secure and convenient "one-touch" loading.

## 4. Multiple Folders

Place up to 16 document feeders and folders in line to improve workflow and eliminate pre-folding enclosures – even documents of varied sizes.

## 5. 24" Color Touch Screen

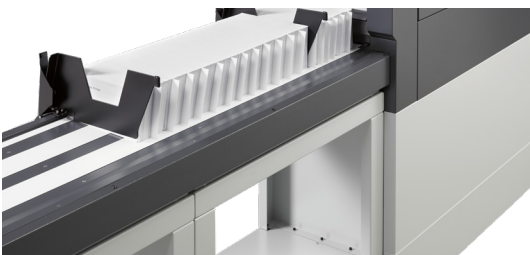
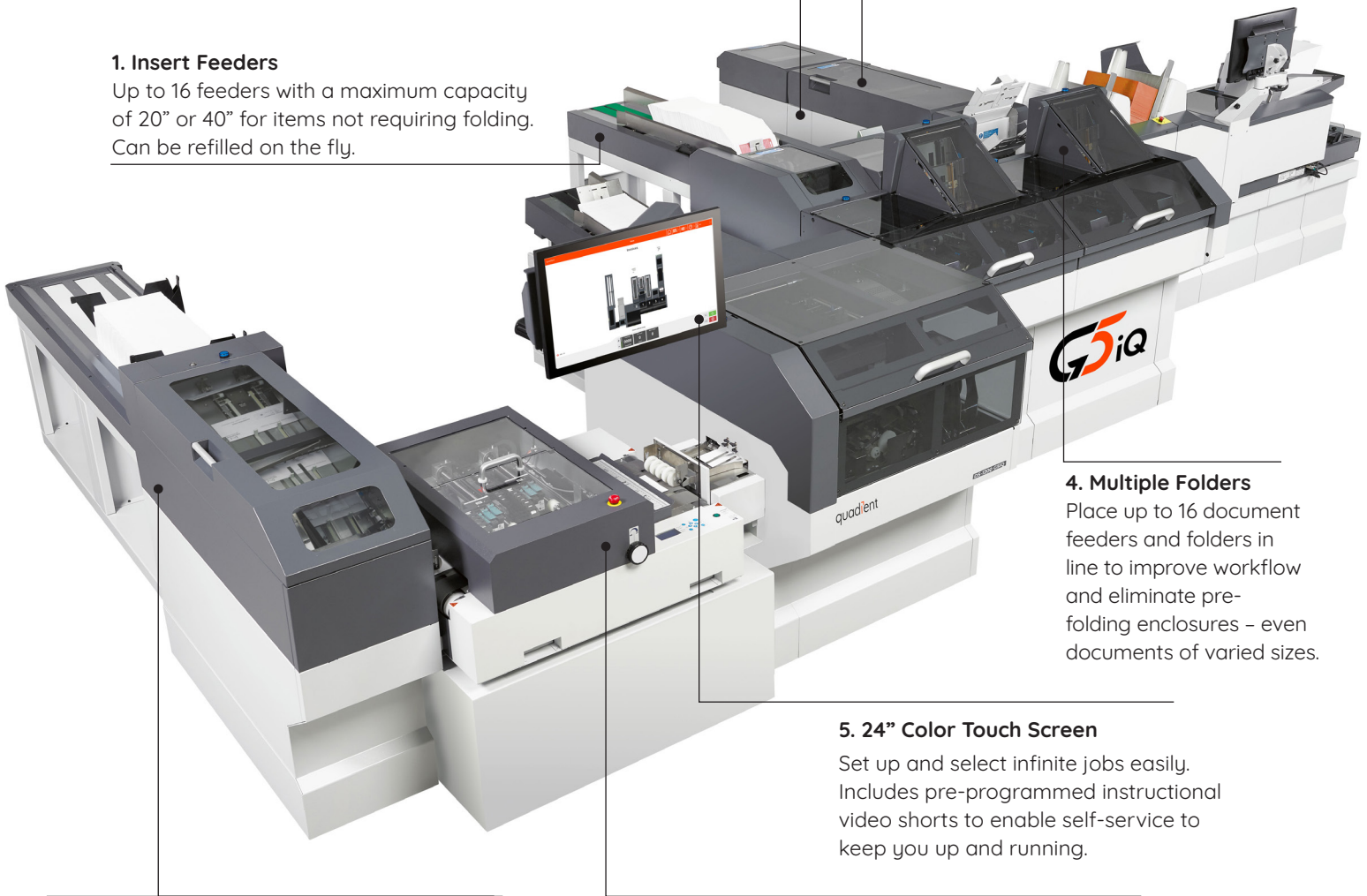
Set up and select infinite jobs easily. Includes pre-programmed instructional video shorts to enable self-service to keep you up and running.

## 7. Vertical Stacker

High-capacity on-edge stacking of filled envelopes, output with intelligent "jog" function for efficient output processing.

## 6. Inline Processing

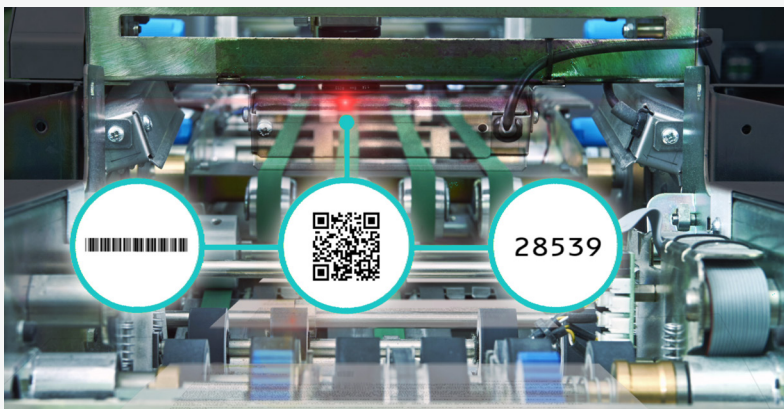
Reduce offline work and easily personalize every envelope. Output options include dynamic envelope printing, addressing, metering, or stamp affixing.



# Easy-to-use Intelligent Mail Operating System (IMOS)

The IMOS Graphical User Interface reaches new heights in user-friendliness and job programming supported by a new more powerful PC for faster processing and communication. The intuitive interface cuts down on training times for new operators and speeds up learning curves, enabling them to create, start, stop, and change jobs with the touch of a button.

Create infinite job presets and change jobs in seconds thanks to the automated setup that adjusts, tracks, and guides every part of the system at the touch of a button. Even the document and insert separators set automatically, by simply selecting the job on the control panel.



## Flexible barcode reading

The DS-1200 G5iQ is equipped to read a wide range of barcodes—including 1D, 2D, QR, OMR, and OCR—anywhere on the page for fast, efficient processing. Its cameras automatically adjust for each job. Documents and inserts can be read from both sides and from top and bottom.

## High-capacity mobile trolley system

Quadient's unique and exclusive mobile trolley system minimizes material handling and offers maximum document transport efficiency. One-touch loading and plug-and-play design enable secure and convenient transportation of up to 5,000 sheets between printers and inserters. A multi-job mode enables multiple job runs in one batch without stops.



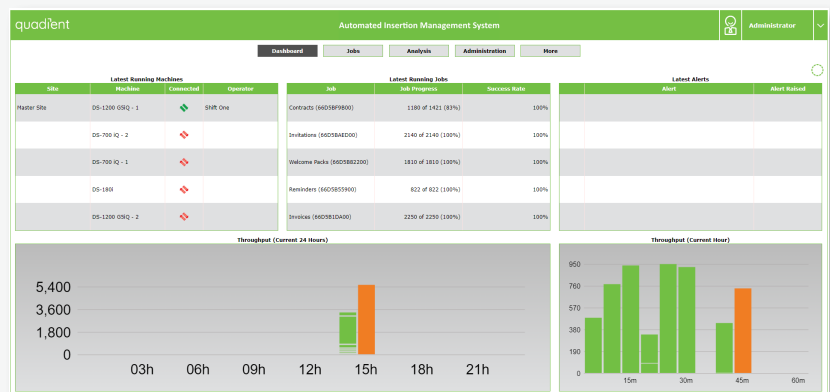
## Automatic envelope size selection

The Full Format module can insert 80 sheets and up to 8 inserts in flats. In addition to running 9" x 12" or 10" x 13" flats, the DS-1200 G5iQ can dynamically select the envelope size based on the page count, reading code, or control data from the AIMS management system.



## Ensure document integrity and security with closed-loop verification

The Automated Insertion Management System (AIMS) monitors and reports on the insertion process, ensuring that every envelope receives the correct contents and alerts you of any misfeeds. AIMS provides you with a real-time dashboard, enabling you to view the details of each job. Now, with the Power BI Adaptor, you can dive deeper into your data and create your own dashboards to get robust reporting and insights on each job or customer.



\*Power BI is a registered trademark of Microsoft

## Secure your competitive edge with the future-ready DS-1200 G5iQ

The DS-1200 G5iQ is more than just a powerful inserter—it's a strategic asset that can elevate your business's operations. By seamlessly integrating advanced automation and modular flexibility, it enables you to better serve your customers while boosting productivity and efficiency. With the DS-1200 G5iQ, you can adapt effortlessly to future challenges, ensuring your business is always a step ahead.



## SPECIFICATIONS

|                                     |                                                                                             |
|-------------------------------------|---------------------------------------------------------------------------------------------|
| Processing speed                    | Up to 12,000 envelopes/hour<br>Up to 32,000 sheets/hour                                     |
| 24" touch screen PC control         | Standard                                                                                    |
| Automatic job set up                | Standard                                                                                    |
| Document feeder capacity            | Up to 5,000 sheets                                                                          |
| Insert feeder capacity              | Up to 40" of material (2,000 BRE's)                                                         |
| Envelope feeder capacity            | A6/ #10/ 6" x 9.5" / 9" x 12" / 10"x 13" up to 2,000 envelopes<br>Flats up to 500 envelopes |
| Folding and inserting               | All standard envelopes up to<br>8 mm and 10 mm for flats                                    |
| Collation before folding            | Standard                                                                                    |
| Collation of inserts                | Standard                                                                                    |
| Double feed detection optical       | Standard                                                                                    |
| Full modularity                     | Standard                                                                                    |
| Online help/remote assistance       | Standard                                                                                    |
| <b>Options</b>                      |                                                                                             |
| Accumulation before folding         | Available                                                                                   |
| Multiple Fold Stations              | Available                                                                                   |
| Optical Mark Recognition (OMR)      | Available                                                                                   |
| Optical Character Recognition (OCR) | Available                                                                                   |
| Linear Barcode                      | Available                                                                                   |
| 2D Data Matrix                      | Available                                                                                   |
| Double feed detection mechanical    | Available                                                                                   |
| Double feed detection ultrasonic    | Available                                                                                   |
| Mailing system interface            | Available                                                                                   |
| Stamp affixing                      | Available                                                                                   |
| Envelope printing                   | Available                                                                                   |
| Envelope sorting                    | Available                                                                                   |



## About SMARTECH

SMARTECH, a global leader in parcel locker solutions, extends its award-winning expertise beyond Sing and Display, Print Finishing equipment, and Mailing Solutions. Operating across Australia, New Zealand, Asia, and North America, we provide localised support and cutting-edge technology to different industries. Smart Parcel Lockers by SMARTECH are the leading providers of package management solutions for residential, commercial, retail, and university properties. We offer a wide range of solutions, ensuring the simple and secure delivery and retrieval of packages and online orders. Our mission is to optimise business operations, reduce costs, and enhance efficiency through innovative parcel locker technology. Embrace the future of last-mile delivery with SMARTECH's commitment to excellence.



[smartech-aust.com.au](http://smartech-aust.com.au)



1800 422 349



[ebusiness@smartech-aust.com](mailto:ebusiness@smartech-aust.com)