



## INTELLIGENT CUTTING & FINISHING

Jingwei Systemtechnik is a global leader in plotter and digital cutting technology. As technology pioneers, we are committed to driving a revolution through relentless innovation and continuous product enhancement. Our ever-evolving portfolio is designed to meet the dynamic needs of various industries, making Jingwei a trusted name in the footwear, apparel, packaging, signage, electronics, and leather industries.

Our innovation. Your success.

# SL 3232

## Intelligent large format integrated cutting system

New generation cutting & finishing for signage & graphics applications



# JINGWEI

## SYSTEMTECHNIK

With a 30-year legacy of innovation and excellence, Jingwei has been at the forefront of cutting technology, shaping the industry with advanced, automated, and highly adaptable solutions. As the leading force in flexible material cutting in the domestic market, we have expanded globally, earning a reputation for precision, efficiency, and high performance.

For over a decade, we have been a trusted partner in the signage and surface graphics industries, delivering digital finishing and cutting systems that seamlessly handle an extensive range of rigid and flexible materials.

Our solutions are engineered to meet the evolving demands of modern production, ensuring unmatched accuracy and reliability.

With a strong emphasis on customization and intelligent automation, JWEI empowers businesses to optimize production, streamline workflows, and maximize efficiency. Built for speed, accuracy, and adaptability, our cutting-edge technology is transforming industries worldwide.

**30<sup>th</sup>**

30 years of technological excellence

**120<sup>+</sup>**

Active in over 120 countries & regions

**300<sup>+</sup>**

More than 300 sales and service networks

**30000<sup>+</sup>**

Chosen by over 300,000 global customers

**8<sup>+</sup>**

Servicing the needs of multiple industry sectors

**200<sup>+</sup>**

More than 200 patents



# SL 3232

Intelligent Large-Format Integrated Cutting Solution

Our innovation. Your success.



## Product Specification

JWEI reserves the right of final interpretation of the following parameters, subject to change without prior notice.

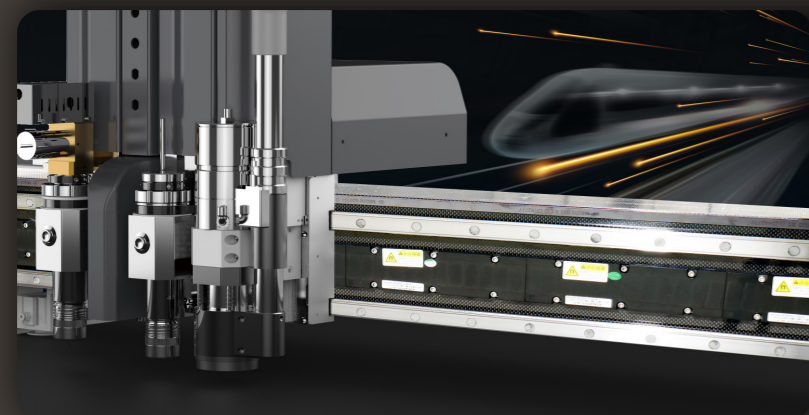
Model	SL3232
Multi-functional Tool Head	Multi-tool fixing holes, tool quick insert fixing, easy to replace cutting tools, plug and play, set cutting, creasing, drawing, router and other functions in one, optional ATC module.
Tools	Electric oscillating tool, drag knife, rotary tool, router tool module, plotting tools etc.
Max. Operating speed	3000mm/s
Max. Cutting Thickness	50mm *
Repeat Precision	< 0.05mm
Cutting Materials	ABS board, PVC board, space board, aluminum-plastic board, lamp sheet, back glue, PVC board, KT board, acrylic, magnetic sticker, self-adhesive etc.
Material Fixation Mode	Vacuum absorption
Software resolution	0.025、0.01、0.1 optional
Transmission Mode	Ethernet port
Drive System	Bus controller, advanced servo system, imported linear guide rail, lead screw, linear motor drive
Instruction system	HP-GL compatible format
Automatic knife setting	Non-contact tool setting mode for drag knife, rotary tool, electric oscillating tool, creasing wheel tool, v-cut tool etc.
Automatic tool setting accuracy	0.05mm
Rated Power	23kW
Rated Voltage	380V±10%
Machine Weight	4000kg
Effective Cutting Size (WxL)	3250mm×3200mm
Machine Size (WxLxH)	4550mm×4250mm×1400mm

Note:\* Dependent on materials and application

  
Ultra-High Speed  
3m/s

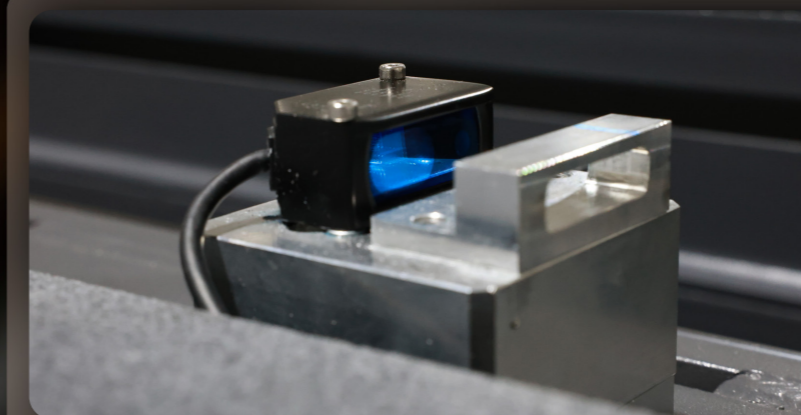
  
Laser Tool  
Alignment

  
Large-Format



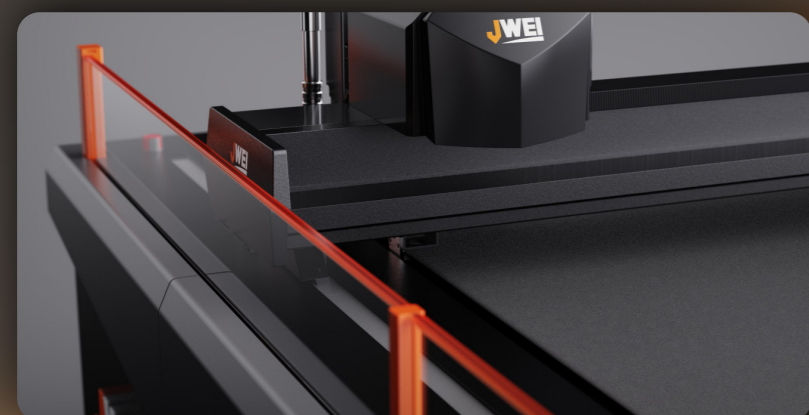
### Magnetic Levitation Drive + Linear Motors

Achieves speeds of up to 3000mm/s even with large formats



### Laser Tool Alignment

Eliminates potential errors from traditional mechanical alignment



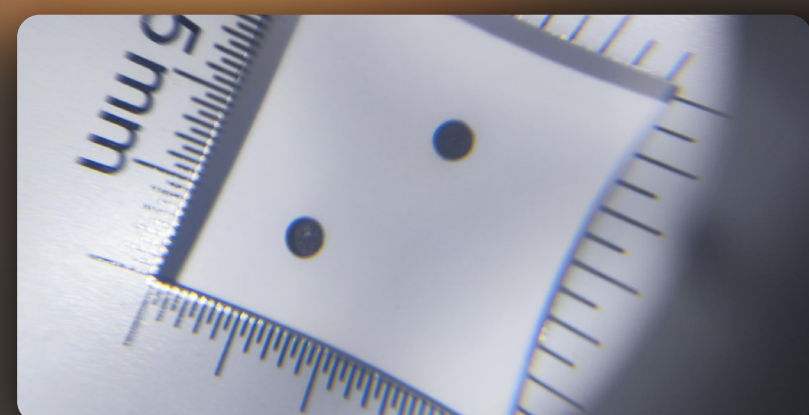
### Four Layers of Safety Protection

Proximity slow cut  
Lift-type Safety Protection  
Infrared anti-collision  
Emergency Stop



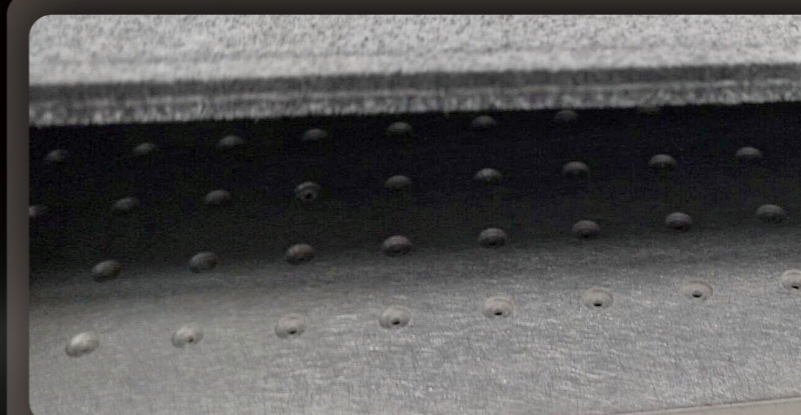
### Newly upgraded CAD operating software

Quick, smarter set-up  
Precise identification of materials  
Automatic edge tracking for accurate cutting



### Advanced motion control for ultra-fine cuts

Achieve flawless cutting of tiny circles as small as 1mm in diameter



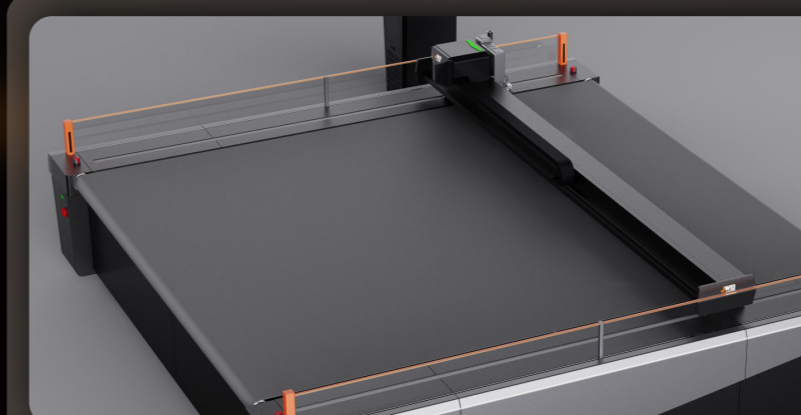
### Superior material fixation with next level noise reduction

Optimised airflow for powerful high suction vacuum  
Lower sound volume operation of 64d at a reduced frequency



### Automatic Tool and Milling Cutter Exchange

Eliminates manual intervention, optimizing changeovers for maximum efficiency



### Additional Features

Active Deviation Correction System  
Tension Control System  
Modular Design for Universal Components  
NFC Access Control  
Hawk-Eye Spectral Positioning Multi-Functional Operating Platform  
...



Our innovation. Your success.



Contact us

1800 422 349

[www.smarttech-aust.com](http://www.smarttech-aust.com)

[ebusiness@smarttech-aust.com](mailto:ebusiness@smarttech-aust.com)