

**RX**

**TOLEDO, OH**  
**MAR 20 - 22**



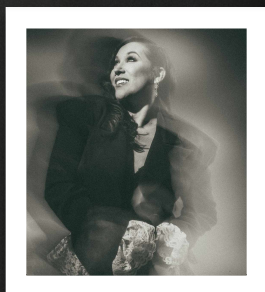
**VENUE**

**Glass City Center**  
401 Jefferson Ave  
Toledo, OH 43604  
(419) 255-3300

**HOTEL**

**Hilton Garden Inn Toledo**  
**Downtown**  
101 N Summit St  
Toledo, OH 43604  
(419) 464-9220

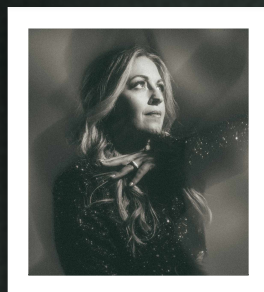
**FACULTY**



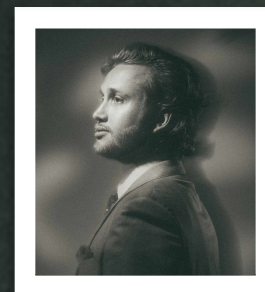
**RACHEL SIEGEL**



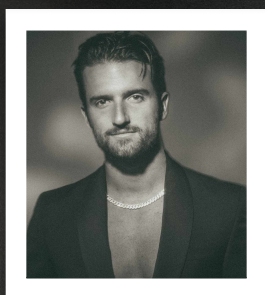
**JUDY RICE**



**BREA COOK**



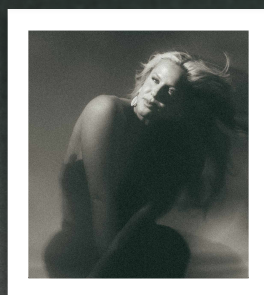
**RYAN VETTEL**



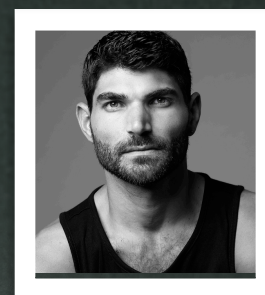
**CHASE HALEY  
BOWDEN**



**GIGI TORRES**



**RUMER NOEL**



**CHRISTIAN  
DENICE**

# EVENT SCHEDULE

TOLEDO, OH - FRIDAY, MAR 20

SENIOR PAVILION BALROOM	TEEN BALLROOM A-B	JUNIOR BALLROOM C	MINI JEFFERSON D-G	REVKIDS JEFFERSON A-B
7AM-11AM / 4PM-8PM REGISTRATION OPEN - Ballroom Lobby				
6PM BONUS CLASSES - AGES MINI-SENIOR - Grand Cypress G-H				
6PM BONUS CLASS - CONTEMPORARY - JAZLIN				
7PM BONUS CLASS - JAZZ - MOLLIE				
DRESSING ROOMS OPEN			6:00AM - BALLROOM C	
<b>COMPETITION</b> - Junior Solos, RevKids + Mini Duos/Trios, Mini + Junior Groups, Lines, and Productions			7AM2:05PM - BALLROOM A-B	
AWARDS			2:05PM - BALLROOM A-B	
<b>COMPETITION</b> - Teen & Senior Solos			2:50PM-10:35PM - BALLROOM A-B	
AWARDS			10:35PM - BALLROOM A-B	

TOLEDO, OH - SATURDAY, MAR 21

SENIOR PAVILION BALROOM	TEEN BALLROOM A-B	JUNIOR BALLROOM C	MINI JEFFERSON D-G	REVKIDS JEFFERSON A-B
7AM-1PM REGISTRATION OPEN - Ballroom Lobby				
7:30AM REVEL UP! WARM UP - Grand Cypress D-F				
7:45-8:45AM BALLET - JUDY	7:45-8:45AM JAZZ FUNK - RUMER	7:45-8:45AM HIP HOP - GIGI	7:45-8:45AM JAZZ - RACHEL <b>ELITE REVELER AUDITION</b>	<b>8:30-8:45AM WARM UP - MOLLIE</b>
8:45-10AM JAZZ - BREA <b>ELITE REVELER AUDITION</b>	8:45-9:45AM BALLET - JUDY	8:45-9:45AM CONTEMPORARY - CHRISTIAN	8:45-9:45AM CONTEMP FUSION - CHASE	<b>8:45-9:30AM JAZZ - JAZLIN</b>
10-11AM CONTEMPORARY - CHRISTIAN	9:45-11AM JAZZ - BREA <b>ELITE REVELER AUDITION</b>	9:45-10:45AM TAP - RYAN	9:45-10:45AM BALLET - JUDY	<b>9:45-10:30AM CONTEMPORARY - OLVIA</b>
11-11:45AM BREAK	11-11:45AM BREAK	10:45-11:30AM BREAK	10:45-11:45AM BREAK	<b>10:45-11:30AM HIP HOP - MOLLIE</b>
11:45-12:45PM TAP - RYAN	11:45-12:45PM CONTEMPORARY - CHRISTIAN <i>SHOWCASE COMBO</i>	11:30-12:45PM JAZZ - BREA <b>ELITE REVELER AUDITION</b>	11:45-12:45PM HIP HOP - GIGI <i>SHOWCASE COMBO</i>	
12:45-1:45PM CONTEMP FUSION - CHASE <i>SHOWCASE COMBO</i>	12:45-1:45PM HIP HOP - GIGI	12:45-1:45PM JAZZ FUNK - RUMER <i>SHOWCASE COMBO</i>	12:45-1:45PM CONTEMPORARY - CHRISTIAN	
DRESSING ROOMS OPEN			1:45PM - BALLROOM C	
<b>COMPETITION</b> - Junior - Teen Duos/Trios, Teen + Senior Groups, Lines, and Productions			2:30PM-10:10PM - BALLROOM A-B	
AWARDS			10:10PM - BALLROOM A-B	

# EVENT SCHEDULE

TOLEDO, OH - SUNDAY, MAR 22

<i>SENIOR</i> PAVILION BALLROOM	<i>TEEN</i> BALLROOM A-B	<i>JUNIOR</i> BALLROOM C	<i>MINI</i> JEFFERSON D-G	<i>REVKIDS</i> JEFFERSON A-B
DRESSING ROOMS OPEN			6:30AM - BALLROOM C	
COMPETITION - <i>Mini Solos</i>			7AM-8AM - BALLROOM A-B	
AWARDS			8AM - BALLROOM A-B	
7-8AM PRO AUDITION				
<b>8:30AM</b> ELITE REHEARSAL - CHASE	<b>8:30AM</b> ELITE REHEARSAL - CHRISTIAN	<b>8:30AM</b> ELITE REHEARSAL - RUMER	<b>8:30AM</b> ELITE REHEARSAL - GIGI	<b>8:30-9:15AM</b> BROADWAY - MOLLIE
9-10AM JAZZ FUNK - RUMER	9-10AM CONTEMP FUSION - CHASE	9-10AM TAP - RYAN	9-10AM JAZZ - BREA	<b>9:30-10:15AM</b> BALLET - OLIVIA
10-11AM CONTEMP FUSION - CHASE	<b>10-11AM</b> CLI CONSERVATORY	10-11AM BALLET - JUDY	10-11AM TAP - RYAN	<b>10:15-11AM</b> REX PARTY - RACHEL
11-11:45AM BREAK	11-11:45AM BREAK	11-11:45AM BREAK	11-11:45AM BREAK	<b>11-11:30AM</b> REVKIDS SHOWCASE MAINSTAGE BALLROOM
<b>11:45-12:45PM</b> CLI CONSERVATORY	11:45-12:45PM TAP - RYAN	11:45-12:45PM JAZZ - BREA	11:45-12:45PM BALLET - JUDY	11:30AM TEACHER APPRECIATION LUNCHEON SUMMIT B
12:45-1:45PM HIP HOP - GIGI	12:45-1:45PM BALLET - JUDY	12:45-1:45PM CONTEMPORARY - CHASE	12:45-1:45PM JAZZ FUNK - RUMER	
1:45-2:45PM CONTEMPORARY - CHRISTIAN	1:45-2:45PM JAZZ FUNK - RUMER	1:45-2:45PM HIP HOP - GIGI		
DRESSING ROOMS OPEN			2:45PM - BALLROOM C	
REMIX CLOSING SHOWCASE & AWARDS PRESENTATION			3PM - BALLROOM A-B	

## FOR ATTENDING STUDIO OWNERS & TEACHERS

### REVEL TEACHER APPRECIATION LUNCHEON

On Sunday, join your Revel Regional Director and Event Manager for a complimentary lunch and round table discussion in the designated "Teacher Appreciation Luncheon" room (see schedule herein). RSVP is required to attend



# WELCOME REVELERS!

We are so excited to welcome you to Season 10: The RX Tour! Included below is a full rundown of the event you and/or your dance families will need to know before heading to **TOLEDO!** Please read through all the information provided and email [events@dancerevel.com](mailto:events@dancerevel.com) should you have any questions. We look forward to seeing you in **TOLEDO!**

## VENUE DETAILS

### CONVENTION BALLROOMS

Seniors - Pavilion Ballroom (Located at the Hilton Garden Inn)  
Teens - Ballroom A-B  
Juniors - Ballroom C  
Minis - Jefferson D-G  
RevKids - Jefferson A-B  
Bonus Classes - Jefferson D-G  
Teacher Luncheon & Round Table - Summit B

### COMPETITION BALLROOMS

Mainstage - Ballroom A-B  
Girls Dressing Room - Ballroom C  
Boys Dressing Room - Summit B  
Gender Neutral Dressing Room - Jefferson C

### PARKING

Parking Garage at Glass City Center = \$10 - \$15 per day

### CONCESSIONS

- No specific concessions
- Several restaurants around the hotel offer a variety of food options

### SEASON 10 MERCHANDISE

We are thrilled to unveil our latest collection, a truly special line that marks a decade of Revel's journey and is deeply inspired by the vision and passion of our founder. Grab your REVEL RX themed apparel before the event and show it off! <https://reveldanceconvention.myshopify.com>

# REGISTRATION & CHECK IN DETAILS

## PARTICIPANT WAIVER

Every participating dancer needs to sign a waiver before arriving onsite at Revel. Dancers who have not signed a waiver, will not be allowed to participate in the event. To sign a waiver, please visit [dancerevel.com](http://dancerevel.com) and click Sign Waiver under the REGISTER tab. Follow instructions from there.

## REGISTRATION + CHECK IN

Studios and independent dancers may pick up their audition numbers and dancer wristbands at check-in on Friday or Saturday. Registration & Check-In is located in the ballroom/convention lobby. See check-in times on the event schedule herein.

## DANCER WRISTBANDS + AUDITION NUMBERS

Each participating dancer will receive a wristband to gain access into the ballrooms. Each band is a specific color per the dancers age group: REVKids (Rainbow), Mini (Pink), Junior (Purple), Teen (Teal), Senior (Blue). Every participating dancer will receive 2 audition numbers (with their names on them) - one to be worn on Saturday and the other on Sunday. Wearing your audition number is required in all classes, with exception of Friday Night Bonus Class.

## STUDIO OBSERVERS

Studios will be able to receive up to a max of 5 complimentary VIP Teacher Lanyards for them and their studio staff. These VIP Teacher Lanyards will provide access to all convention ballrooms. Studio staff must be wearing their lanyard to sit in any chair designated as a "Teacher" chair. To be eligible, studios must list all staff in their registration prior to arriving onsite at Revel.

## CONVENTION OBSERVERS

Parents of registered dancers are allowed into the convention classes if they purchase an Observer Band. Studios can purchase Observer Bands for their dance families in their registration portal. Observer Bands can also be purchased onsite at the Merchandise Table in the ballroom/convention lobby. For security reasons, individuals must provide their dancer's name and DOB to purchase an Observer Band onsite. More info regarding pricing/rules can be found at [dancerevel.com/convention](http://dancerevel.com/convention).

## COMPETITION OBSERVERS (AKA) REV-PASS

For safety and security reasons, any individual (except for registered dancers & studio staff) entering the competition ballroom must show their REV-PASS to Revel Staff at the audience entrance door. Instructions for family & friends to obtain a REV-PASS will be sent to participating studios prior the event.

# CONVENTION DETAILS

## BONUS CLASSES

Revel will host Friday night Bonus Classes open to Mini through Senior ages. Dancers who are onsite, available and not competing in Friday's Competition can partake in these classes. Audition numbers and wristbands are not required to enter the ballroom, however any adult wishing to watch classes must have an observer band. See event schedule herein for Bonus Class times and details.

## REVEL UP! WARM UP

Join your Revel Regional Director, Rev Fam and S10 Pro Revelers for a high-energy Warm Up to kick-off the weekend of classes. The warm up will take place in the MainStage Ballroom at 7:30am on Saturday.

**\*\*WARNING: STROBE LIGHTING EFFECTS MAY BE USED!\*\***

## AUDITIONS FOR SCHOLARSHIPS

Revel will hold two audition classes during their Regional Tour.

1. The Elite Reveler Audition Class will take place on Saturday in all age rooms. This audition is for dancers to receive a variety of awards and opportunities. Revel Tuition Based Scholarships, Nationals Scholarships, Elite Reveler Runner Up and Winner Scholarship, as well as industry sponsored scholarships from Company 12 Pom and Dancer, CLI Conservatory, Duncan Cooper Workshop, TMillyTV, LA Establishment, McDonald/Selznick Associates, Prodigy Dance Convention, and University of Arizona
2. The Pro Reveler Audition Class will take place on Sunday morning. Dancers who want to take this class and audition for our Pro Reveler Company (and receive the opportunity to tour with Revel the following season) must fill out a form online to gain entry to the audition class. The fee is \$35 dollars. More info can be found at [dancerevel.com](http://dancerevel.com).

## BALLET BARRE

In select cities the Teen & Senior Revelers will be able to participate in a Ballet Barre Class usually hosted in the MainStage Ballroom on Sundays. See time herein.

## ELITE REHEARSAL

Dancers who receive the Elite Reveler Runner-Up Scholarship on Saturday directly after the Elite Reveler Audition Class - must attend a rehearsal on Sunday morning. At this rehearsal, faculty will put together a piece for the Remix Closing Showcase later that day. The combo/choreography to be rehearsed will be marked on the schedule herein. Runners Up will find out if they become an Elite Reveler Winner after the Remix Closing

# CONVENTION DETAILS

## REVKIDS

REVKIDS. Is our program for 4-6 year olds., Taught under the direction of our Regional Directors Trevor Sones and Rachel Siegel, REV-KIDS programming will include six 45 minute classes, a party with Rex and a scholarship awards presentation to conclude the weekend - all taking place in the comfort of the RevKids Ballroom. See schedule for room assignment.

## REMIX CLOSING SHOWCASE + AWARDS PRESENTATION

Every Revel Weekend ends with our Remix Closing Showcase at 2:45pm in the MainStage Ballroom. All dancers, dance families and studio staff are welcome to attend and must have a REV-PASS, Teacher Pass Lanyard or Dancer Wristband. The Remix Closing Showcase will consist of performances by our Faculty, Pro Revelers, Ultimate + Top Revelation Winners, and Elite Reveler Runners Up. Following the showcase, Revel Faculty will distribute scholarship awards as well as announce our Studio Awards from the weekend's competition. The showcase can also be viewed on our livestream at [dancerevel.com](http://dancerevel.com).

**\*\*WARNING: STROBE LIGHTING EFFECTS MAY BE USED!\*\***

# COMPETITION DETAILS

## DRESSING ROOMS

Dressing Room Assignments will be posted onsite all around the ballroom/convention area one hour prior the competition start time. See room assignments listed herein.

## REVEL MAINSTAGE

The Revel MainStage has generally 40 x 28 feet of dance space. The stage also has four 4 x 4 feet wings on both stage right and stage left as well as a pass-through behind the stage. There are two backstage/side entrances. There are no steps in front of the stage.

## MUSIC

Please make sure all music is uploaded to registration. Revel does not accept CD's onsite, therefore we recommend attending with back up music on an iPhone or tablet in case of technical issues.

## PROPS

In general, props weighing over 200lbs and/or exceeding 10 ft in height may not be permitted on the Revel MainStage. Liquids, gels and/or powders of any kind are never permitted on the Revel MainStage. Please make sure all smaller props and set pieces are labeled in your registration and advise a staff member onsite for prop unloading times and location.

# COMPETITION DETAILS

## LIVESTREAM

There will be a competition livestream available online at [dancerevel.com/livestream](http://dancerevel.com/livestream). Studio Directors and/or registered persons will receive the passcode to view the livestream prior to event.

## JUDGING + CRITIQUES

Each routine at Revel Dance Convention will be judged and scored by three qualified judges giving separate audio critiques. Critiques will be available in your registration account on the Monday post scheduled event.

## AWARDS

Revel rewards Adjudication Awards for all entries. Judges will also reward Top Overall placements in solo, duo/trio, small group, large group, line, production in each age division. Special and Choreography Awards will also be rewarded to all categories and age division entries.

Additional awards include the following:

**TOP REVELATION** - judges pick award, going to a group, line or production - if studio receives multiple Top Revelation Awards only the highest scoring will re-perform in the Remix Closing Showcase on Sunday. Receives RevCash toward Nationals registration.

**ULTIMATE REVELATION** - judges pick award, going to a group, line or production - one chosen in every city nominated to go straight through to Revel National Finals Ultimate Revelation Dance-Off for Performance of the Year. Receives RevCash toward Nationals Registration.

**STUDIO REVELATION** - highest scoring group, line, production from each studio that registered min number of group entries. Receives RevCash toward Nationals registration.

**SPIRIT REVELATION** - staff and faculty pick for studio displaying the best camaraderie and professionalism during the convention and competition in a given weekend. Receives RevCash toward Nationals registration.

**REVELRY AWARD** - judges pick, going to the most versatile studio every weekend. Studios must have registered a total of 10 group dances and registered an array of entries in multiple dance styles. Receives RevCash toward Nationals registration.

**TEACHER OF THE WEEKEND** - staff and faculty pick for teacher of the weekend. Comes with a full registration scholarship to Dance Educators Collective.



# ELITE REVELER SCHOLARSHIP

Different from the Pro Reveler Company Scholarship, in which dancers can accept a faculty assistant opportunity with Revel the following season and receive an Unlimited Tuition Scholarship to Revel Dance Convention, the ELITE REVELER SCHOLARSHIP (Runner Up + Winner) is an award honoring the following in-season opportunities and scholarships:

## Elite Reveler Runners Up will receive:

- 50% Revel Nationals Convention Scholarship
- 25% Summer Dance Fest Scholarship
- Eligibility to participate in the Nationals Elite Reveler of the Year Experience (Comp/Audition)
- Invitation to perform in the Nationals Gala Opening Number
- Additional prizes indicated herein

## Elite Reveler Winners will receive:

- 100% Revel Nationals Convention Scholarship
- 100% Single Regional Convention Scholarship
- 50% Summer Dance Fest Scholarship
- Eligibility to participate in the Nationals Elite Reveler of the Year Experience (Comp/Audition)
- Invitation to perform in the Nationals Gala Opening Number
- Additional prizes indicated herein

	ELITE REVELER RUNNER UP	ELITE REVELER WINNER	PRO REVELER WINNER
HOW DO DANCERS GET CHOSEN?	Dancers must attend the Elite Reveler audition in their designated age room at a Regional Event	Dancers must attend the Elite Reveler audition in their designated age room at a Regional Event	Dancers must attend the Pro Reveler audition at a Regional Event
IS THERE AN EXTRA FEE TO AUDITION?	No	No	Yes  \$35 online form
AUDITION DETAILS	Jazz Combo - award recipients will be announced after the audition	Jazz Combo - award recipients will be announced after the Remix Closing Show	Ballet & Jazz Combos - award recipients will be announced after the Remix Closing Show
AWARD DETAILS	<ul style="list-style-type: none"> <li>-50% Nationals Convention Scholarship</li> <li>-25% Summer Dance Fest Scholarship</li> <li>-Eligibility to participate in the Elite Reveler of the Year Experience at Nationals</li> <li>-Invitation to perform in the Gala Closing Show Opening Number</li> <li>-Elite Reveler Jacket (At Nationals)</li> </ul>	<ul style="list-style-type: none"> <li>-100% Nationals Convention Scholarship</li> <li>-100% Single Convention Scholarship</li> <li>-50% Summer Dance Fest Scholarship</li> <li>-Eligibility to participate in the Elite Reveler of the Year Experience at Nationals</li> <li>-Invitation to perform in the Gala Closing Show Opening Number</li> <li>-Elite Reveler Jacket (At Nationals)</li> </ul>	<ul style="list-style-type: none"> <li>-100% UNLIMITED Convention Scholarship</li> <li>-50% Summer Dance Fest Scholarship</li> <li>-Invitation to the Pro Reveler Faculty Assistant Company</li> <li>-Touring privileges for one season</li> </ul>

# - AT REVEL NATIONAL FINALS -

## *ELITE REVELER OF THE YEAR EXPERIENCE*

Elite Reveler Runner Up and Winner recipients at Regionals can then register for the Elite Reveler of the Year Experience at Revel National Finals within the same season. The Elite ROTY Experience will consist of a title solo competition, Elite ROTY Gala Closing Show Rehearsals and audition for the title at our 2026 National Finals. More info can be found online at [dancerevel.com/national-finals](http://dancerevel.com/national-finals).

	Elite ROTY WINNER(S)	1ST RUNNER UP	2ND RUNNER UP
AWARD DETAILS Junior > Senior	-\$750 Cash Prize -Elite ROTY Plaque -Elite ROTY Jacket -Automatic acceptance into the Pro Reveler Faculty Assistant Company for concurrent years until HS Graduation* -100% Unlimited Scholarship -100% Summer Dance Fest Scholarship *if Winner is a current graduating Senior, Pro Reveler assistantship will be permitted 1 year post HS	-\$500 Cash Prize -Elite ROTY Plaque -100% Single Convention Scholarship -100% Summer Dance Fest Scholarship	-\$250 Cash Prize -Elite ROTY Plaque -100% Single Convention Scholarship -100% Summer Dance Fest Scholarship
AWARD DETAILS Mini	-\$750 Cash Prize -Elite ROTY Plaque -Elite ROTY Jacket -100% Unlimited Tuition Scholarship	-\$500 Cash Prize -Elite ROTY Plaque -100% Single Convention Scholarship	-\$250 Cash Prize -Elite ROTY Plaque -100% Single Convention Scholarship

### FAQs

**Can current Pro Reveler Company dancers audition for an Elite Reveler Runner Up/Winner Scholarship at a Regional City? No.**

**If a dancer participates in both the Elite Reveler Audition and Pro Reveler Audition at a Regional City, are they able to receive and utilize both scholarships? Yes,** dancers can receive both scholarships. They would first attend Nationals to compete and audition for Elite Reveler of the Year. If the dancer is awarded Elite Reveler of the Year at Nationals, then they are automatically accepted into the Pro Reveler Company. If the dancer is not awarded Elite Reveler of the Year, then they can still utilize their Pro Reveler Scholarship the following season.

**Can dancers compete a solo in the Elite Reveler of the Year Title Competition and General Solo Competition at Nationals? Yes.** An Elite Reveler recipient can enter 1 solo in the Elite Reveler of the Year Title Competition and 1 solo in the General Solo Competition. Elite Reveler of the Year Title Competition is for adjudication only, as part of the title score includes the audition component. They can be the same solo since the Elite ROTY Competition will not include Top Overall Awards.

**Can dancers compete a solo in the Nationals Pro Reveler of the Year Title Competition and the Nationals General Solo Competition? No.**

# *ADDITIONAL INFORMATION*

## REVEL MEDIA

Professional Photo & Video from the weekend is available for purchase under the "Media" tab on the REVEL website. Families should follow the directions on the screen to enter their dancer's keyword, which will provide them access to their media. Photo & Video will be uploaded as quickly as possible throughout the weekend, subject to the internet speed provided by the venue. If you don't see your dancers' routines, please continue to check back often until it's posted. Any questions can be emailed to [competition@dancerevel.com](mailto:competition@dancerevel.com).

## REVEL MERCHANDISE

Every event on The Replay Tour will host a Merchandise Table in the Ballroom/Convention Lobby. Please be advised that Merchandise hours will vary from city to city. At this time, Revel accepts debit/credit cards only.

## REVEL FIRST AID

Ice Packs and basic first aid essentials can be found at the Revel Merchandise Table. If you have a serious injury, requiring immediate medical attention, please call 911 and/or notify the closest Revel Staff Member or Venue Representative.

## REVEL NATIONAL FINALS

Join us this Summer, July 6-12 in sunny Orlando, FL for The Replay Tour Nationals Finals. Revel Nationals will take place at the beautiful Hilton Lake Buena Vista Palace in Disney Springs! Visit [dancerevel.com/national-finals](http://dancerevel.com/national-finals) for more information.

## STUDIO GIFT

To celebrate Revel's 10th Anniversary, Studios who bring 15 or more dancers will receive a special 10th Anniversary Gift Box at registration when they pick up their studio packets.

# *SUMMER DANCE FEST*

Revel Dance Convention will host a week long Summer dance event called Summer Dance Fest! Hosted in Tampa, FL, July 26-31. Summer Dance Fest will feature a three-course convention event taught by Revel Faculty and other industry guest educators. Visit [dancerevel.com/summer](http://dancerevel.com/summer) for more information.



# *SAFETY & WELLNESS*

Revel is one of only three Certified Events by Youth Protection Association in Dance (YPAD). This means that our team has undergone significant training in the areas of Safety & Wellness for young dancers, and are responsible for upholding the standards set forth by YPAD. These standards include, but are not limited to background checks for all Faculty & Staff, staff being certified in CPR and First Aid, and ensuring policies and procedures uphold REVEL's inclusive, equitable, and family-friendly environment. While attending REVEL, studios should expect convention classes with age-appropriate music and movement choices. REVEL expects the same from attending studios in terms of performances on the competition stage. We believe that as a community everyone can work together to create positive progress in the competitive dance industry. For more information on REVEL's certification through YPAD, please contact our Customer Experience Team.



## *CONTACT INFO*

ONSITE EMERGENCY CONTACT  
[DANIEL@DANCEREVEL.COM](mailto:DANIEL@DANCEREVEL.COM) OR [CATHERINE@DANCEREVEL.COM](mailto:CATHERINE@DANCEREVEL.COM)

GENERAL EVENT QUESTIONS  
[EVENTS@DANCEREVEL.COM](mailto:EVENTS@DANCEREVEL.COM)

COMPETITION QUESTIONS  
[COMPETITION@DANCEREVEL.COM](mailto:COMPETITION@DANCEREVEL.COM)

