

GLADIATOR

TSXV: GLAD

OTCQB: GDTRF

FSE: ZX7

Advancing the High-Grade Whitehorse Copper Project in Yukon, Canada

Traditional lands of the Kwanlin Dün First
Nation and the Ta'an Kwäch'än Council.

Corporate Presentation

April 2026



GLADIATOR METALS: THE WHITEHORSE COPPER PROJECT

TSXV:GLAD | OTCQB:GDTRF | FSE:ZX7

WORLD CLASS ASSET

- ✓ Previously producing 35km strike Skarn Copper Belt.

LARGE-SCALE POTENTIAL

- ✓ Targeting >100 million tonnes (Mt) high-grade inferred copper resource.

NEAR-TERM PROSPECTS

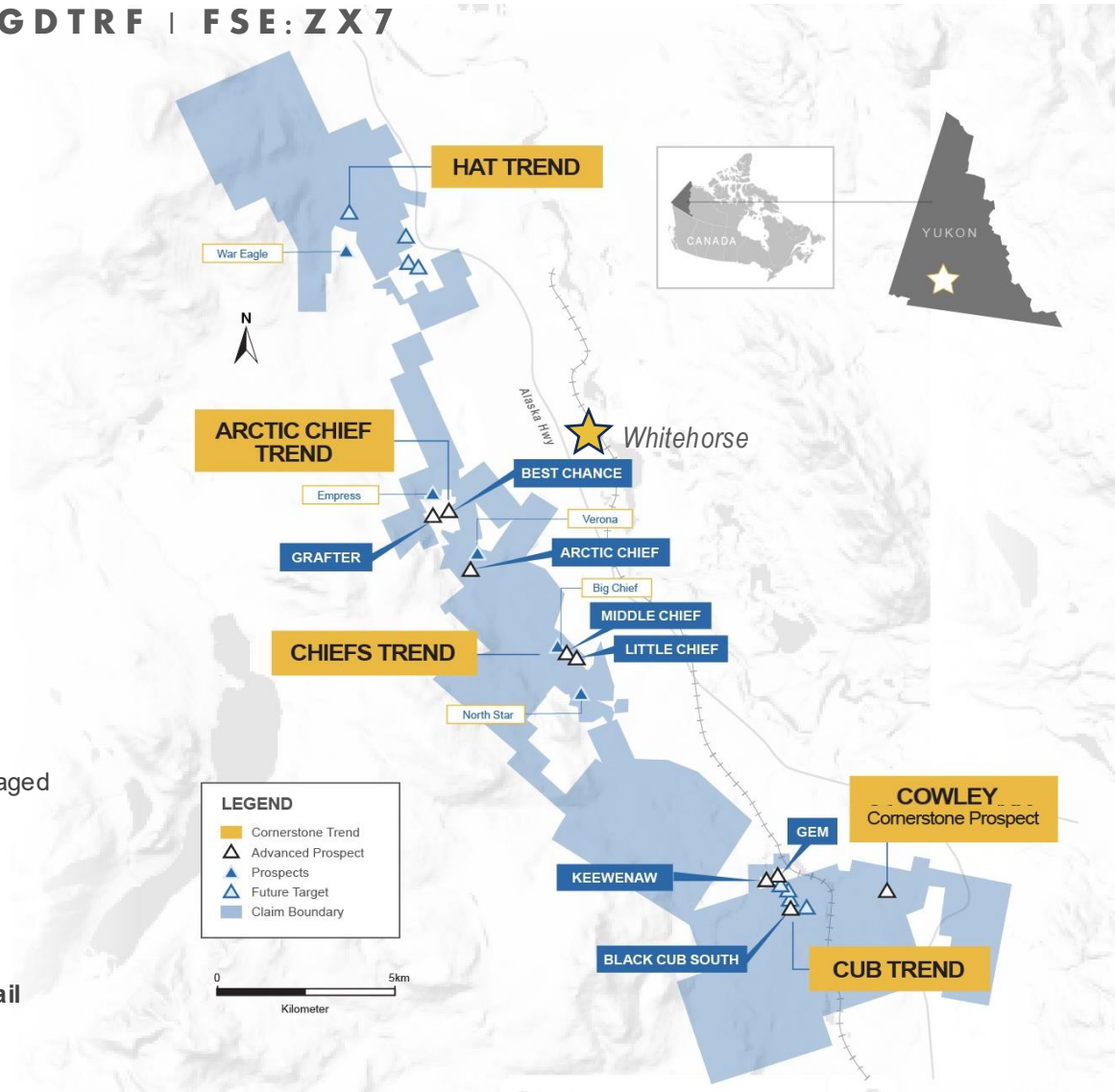
- ✓ Focused on multiple near-surface, high-grade copper prospects.

SIGNIFICANT UPSIDE

- ✓ Under-explored territory; highly leveraged to further exploration and discovery.

INFRASTRUCTURE ADVANTAGE

- ✓ Existing road access, hydro power, rail transport and local labour.



MULTIPLE RESOURCE-READY PROSPECTS

COWLEY - CORNERSTONE PROSPECT, 300+ HOLES DRILLED:

- Shallow, high-grade Cu-Mo mineralization over ~700m strike, with a near surface 1.5% - 2%+ CuEq component. Mineralization reported over broad widths, open in all directions.

CHIEFS TREND (MIDDLE CHIEF & LITTLE CHIEF):

- Shallow, high-grade Cu-Au mineralization.

ARCTIC CHIEF TREND (INCLUDING BEST CHANCE AND GRAFTER):

- Prospective high-grade zones of Cu-Au mineralization.

WATCH: 3D PROJECT OVERVIEW

LEADERSHIP TEAM & SHARE STRUCTURE

Jason Bontempo CEO and Director

20+ years in public company management, corporate advisory and investment banking

Marcus Harden President

20+ years leading exploration projects worldwide; former principal geologist – First Quantum Minerals

Kell Nielsen VP Exploration

Geologist of 30+ years; instrumental in the discovery & development of projects incl. the Wallaby Gold Mine (~7MOz Au) for Placer Dome

Matthew Roma, CPA CFO, Corporate Secretary

12+ years financial management experience; assisted in raising \$85,000,000 for venture mining companies

Darren Devine Chairman

Principal of CDM Capital Partners; corporate finance advisory services to private and public companies

Shawn Khunkhun Director

CEO of Dolly Varden Silver, 20+ years of experience in capital markets, mineral exploration; raised over \$1B in equity for resource companies

Institutional Investors



Analyst Coverage



Joe Mazumdar



Bereket Berhe



Stefan Ioannou

Designation of Securities	Issued and Outstanding
Common Shares ¹	98,941,797
Stock Options and RSUs	10,445,000
Cash	~\$27M October 2025

¹ H.Coyne & Sons (partners) to receive 5M shares in Feb 2026 and 6M shares in Feb 2029 to complete earn in for 100%.

² Weighted Average Price

	Expiry	Outstanding	Exercise Price ²
Options	Oct 2026	900,000	\$0.28
	Feb 2028	710,000	\$0.35
	Sept 2028	1,925,000	\$0.55
	Nov 2028	200,000	\$0.28
	Sept 2029	1,000,000	\$0.40
	Oct 2029	700,000	\$0.45
	Dec 2029	1,775,000	\$0.57
	April 2030	100,000	\$0.40
	June 2030	600,000	\$0.70
	Oct 2030	350,000	\$1.00
RSUs		2,185,000	

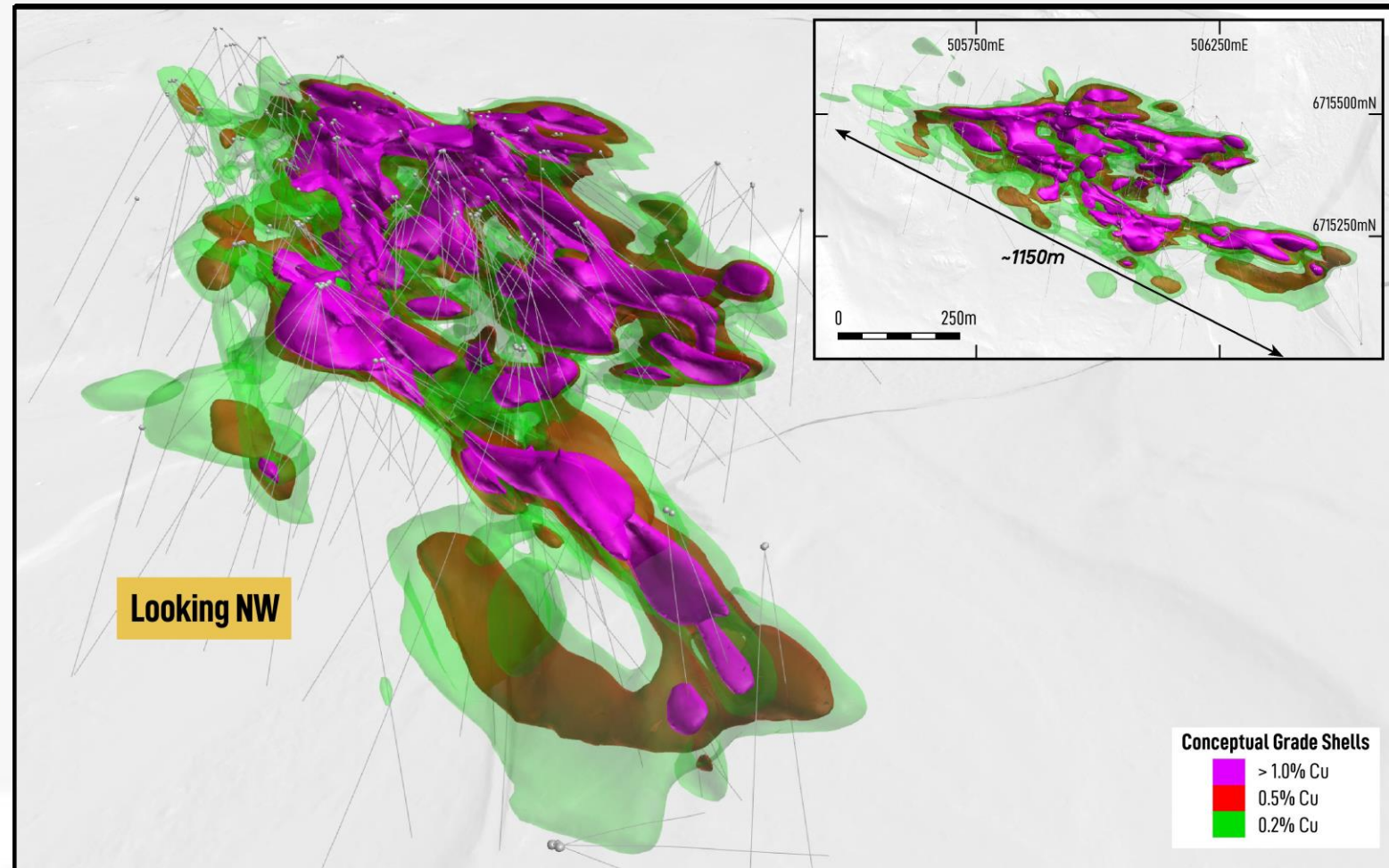
COWLEY

300+ Holes Drilled



High-grade, near surface shallow Cu-Mo skarn system intersected over > 800m of strike, open in all directions

- Near term, high-grade copper resource definition from surface
- Mineralization remains open along strike and down dip in all directions.
- 2025 Results Include:
 - CPG-067D1: 26m @ 3.60% Cu from 103m
 - 11.52m @ 7.54% Cu from 113.38m
 - CPG 068: 27m @ 3.07% Cu from 74m
 - 11m @ 6.56% Cu
 - CPG-078: 58.7m @ 1.94% Cu from 102.3m
 - 11.1m @ 6.00% Cu from 113.9m & 1,964 ppm Mo
 - 8.0m @ 3.80% Cu from 153m



Cowley 3D View looking Northwest, illustrating new interpretation

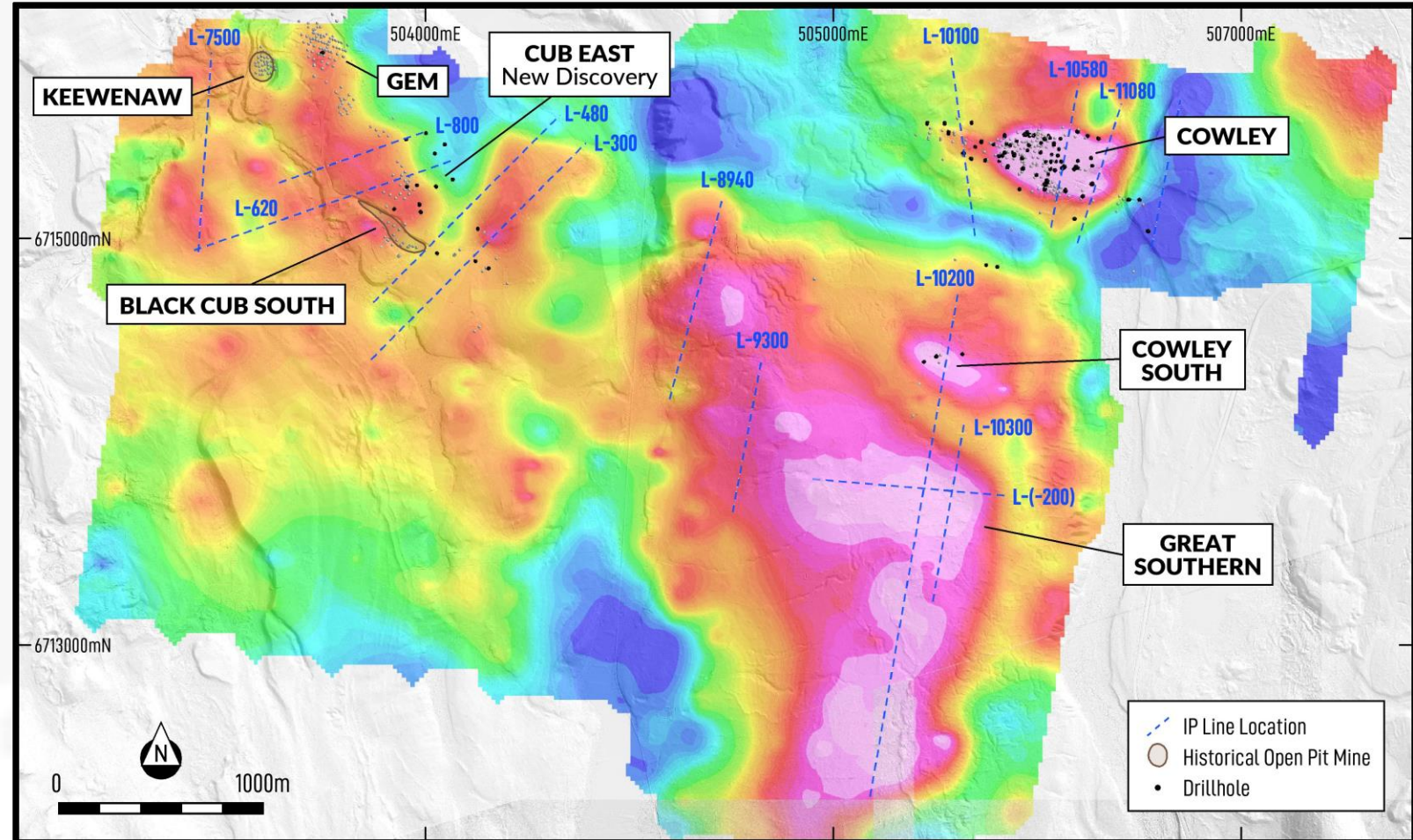
COWLEY

Exploration Potential

- Great Southern IP and gravity anomalies quantifiably larger than the response from the neighboring Cowley mineralized system.
- Both targets were blind to previous exploration efforts as they were only recently identified from Gladiator's ongoing geophysical programs.
- >3 km of prospective strike under thin till cover.
- Numerous targets identified for future drill testing.



Magnetics and Gravity highlight potential continuation of trend west toward Cub



For marked Historical Reserves on the Figure, Please refer to "NI 43-101 Technical Report on the Whitehorse Copper Project Yukon Territory" submitted 07 Feb, 2023

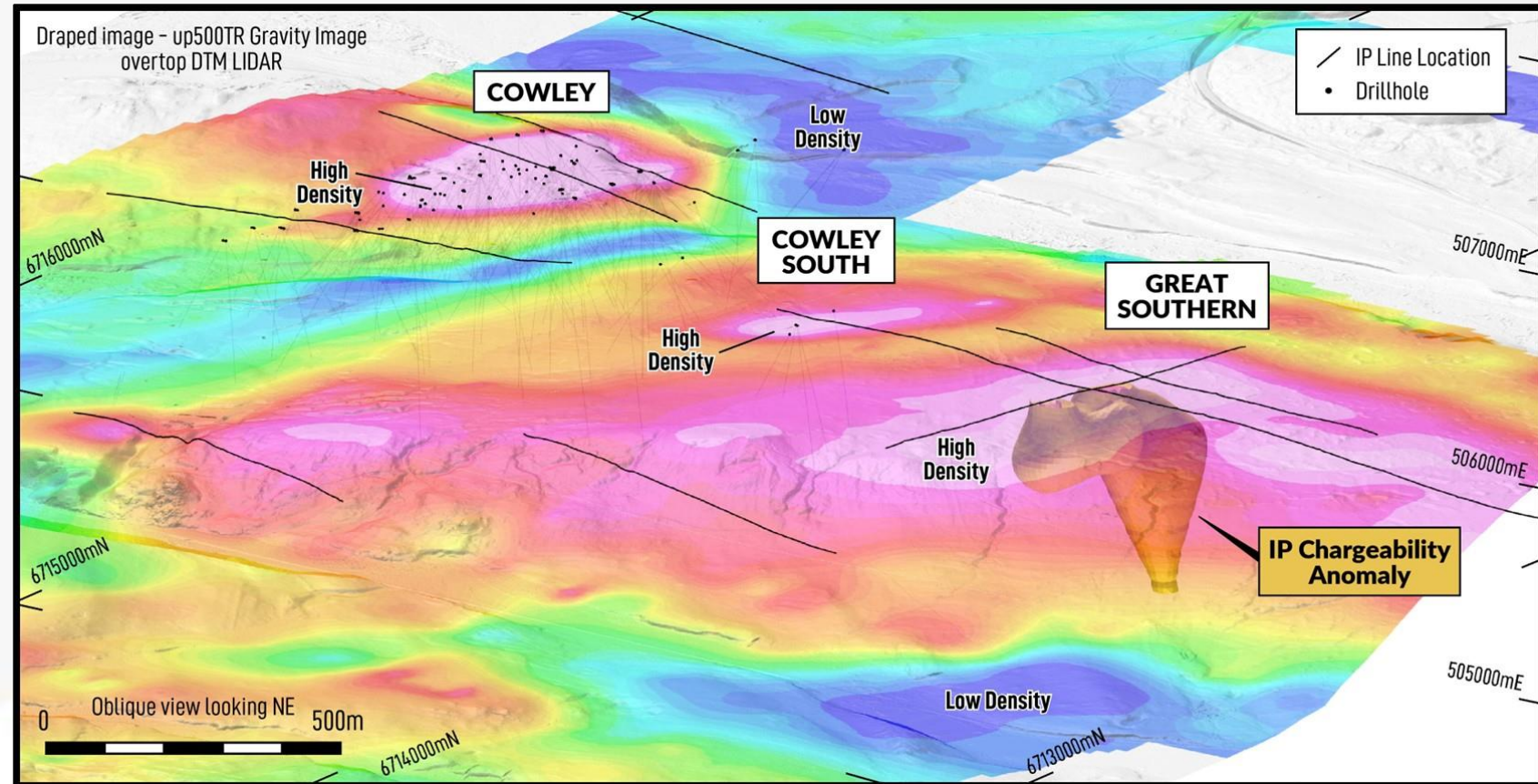
GREAT SOUTHERN

Exploration Potential



Significantly Larger System than Cowley in Geophysics,
High Priority Drill testing Planned

- Great Southern IP and gravity anomalies extend for over 2km within >3 km of prospective strike under thin till cover.
- Density Response significantly higher than Cowley, Skarn mineralization is significantly denser than the intrusion or unaltered sediments.
- Chargeability (IP) responses (30-45 ms) returned to date higher response by > 5-10 ms than Cowley (15-25 ms).
- Increased Sulphide Mineralization?
- Localized topographic highs = alteration system?.



Tilted plan map of Cowley Prospect Area, showing Cowley, Cowley South & Great Southern Gravity anomalies, completed IP lines and modeled inverted IP chargeability anomaly modelled at > 30 ms at Great Southern

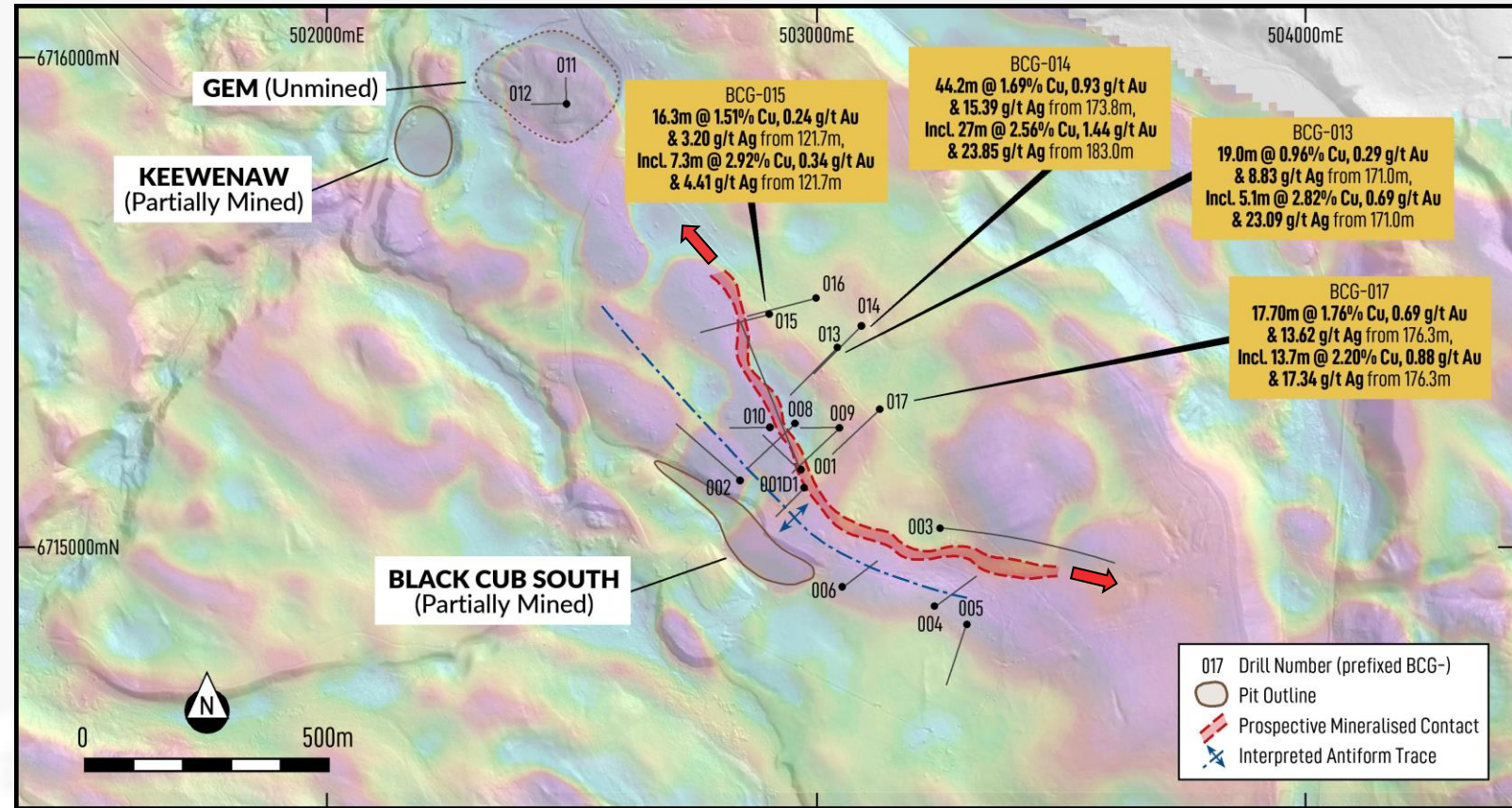
CUB EAST

New Discovery



Cub East validates Gladiator's geophysics-driven exploration model, unlocking the exploration potential across the entire Whitehorse Copper Belt

- High-grade copper-gold-silver magnetite skarn adjacent to the previously mined Black Cub South open pit
- Blind discovery beneath cover, identified using modern IP and gravity geophysics
- 100% hit rate (5 of 5 holes intersected mineralization), including:
 - 44.2 m @ 1.69% Cu + 0.93 g/t Au, incl. 27 m @ 2.56% Cu + 1.44 g/t Au
- Mineralization defined over ~300 m x 300 m and open in all directions



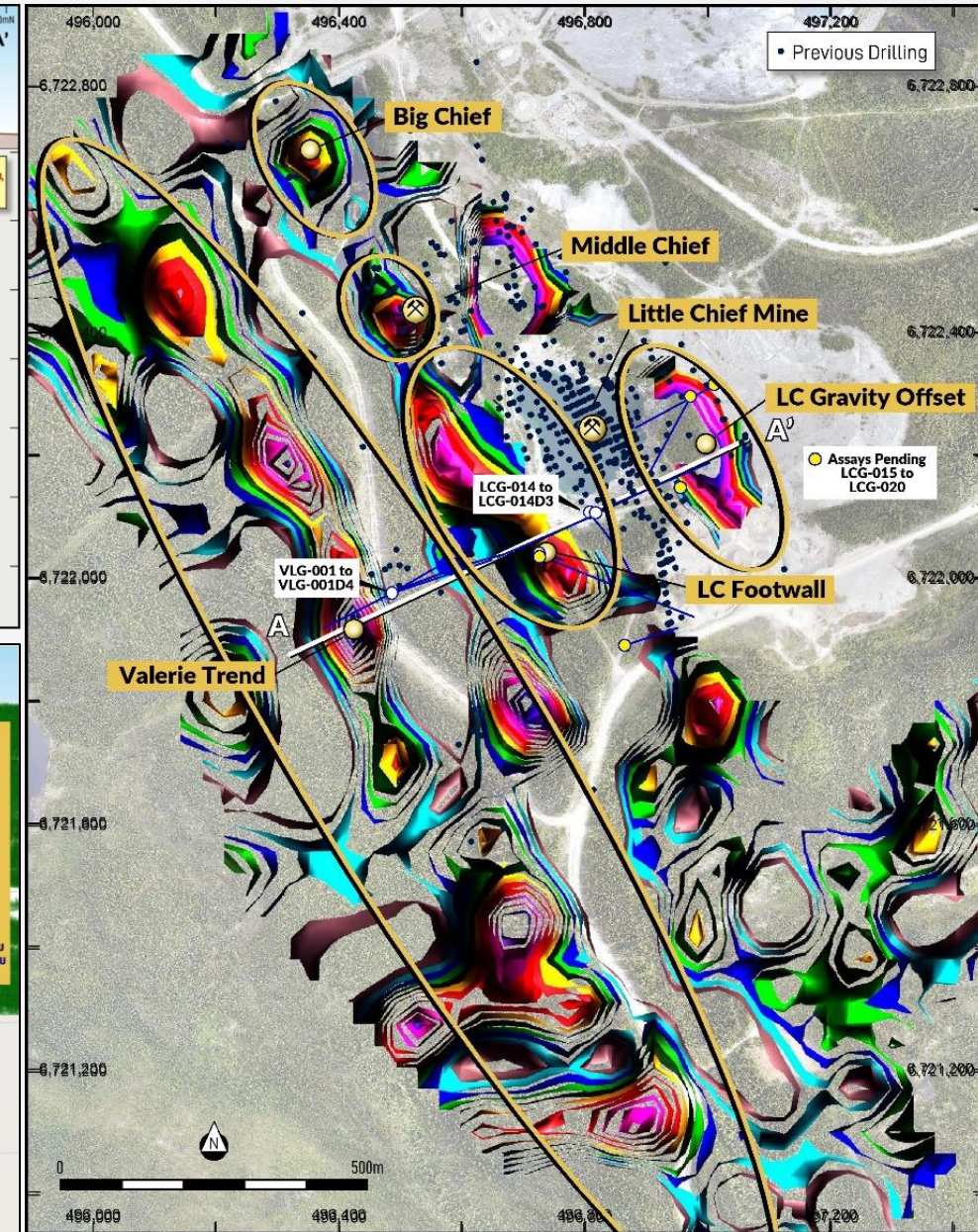
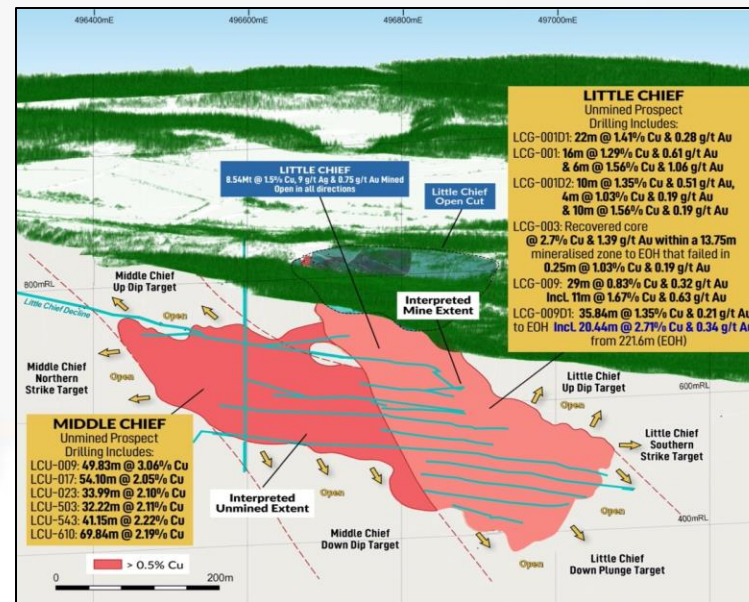
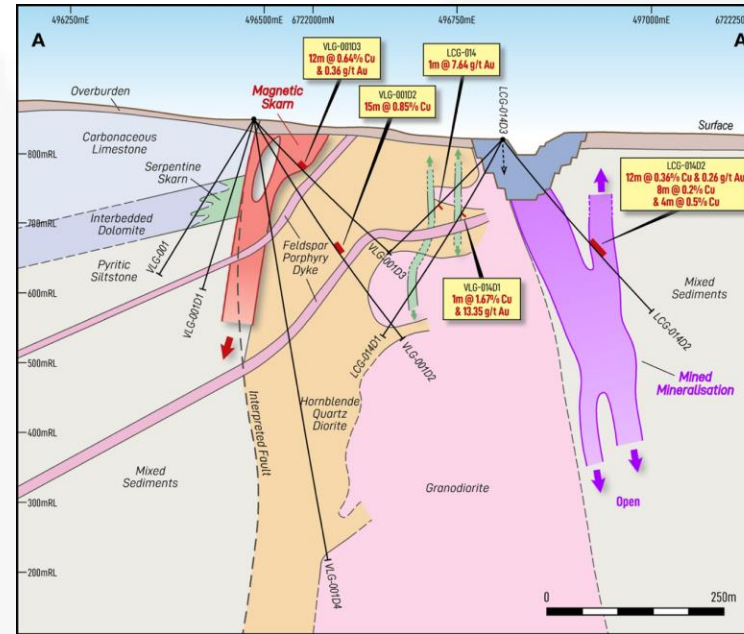
Plan map of Black Cub over Drone Aeromagnetic Survey.

CHIEFS TREND



New skarn and intrusive related Copper-Gold mineralization

- Geophysics has highlighted numerous targets along the 3km long Chiefs trend
- Multiple, previously unknown copper-gold skarn and intrusive related mineralized trends identified in first drilling
- Unmined intervals at Middle Chief Include:
 - LCU-009: **49.83m @ 3.06% Cu**
 - LCU-017: **54.10m @ 2.05% Cu**
 - LCU-543: **41.15m @ 2.22% Cu**
- Intrusive related copper mineralization including **15.8m @ 0.85% Cu**



CHIEFS TREND

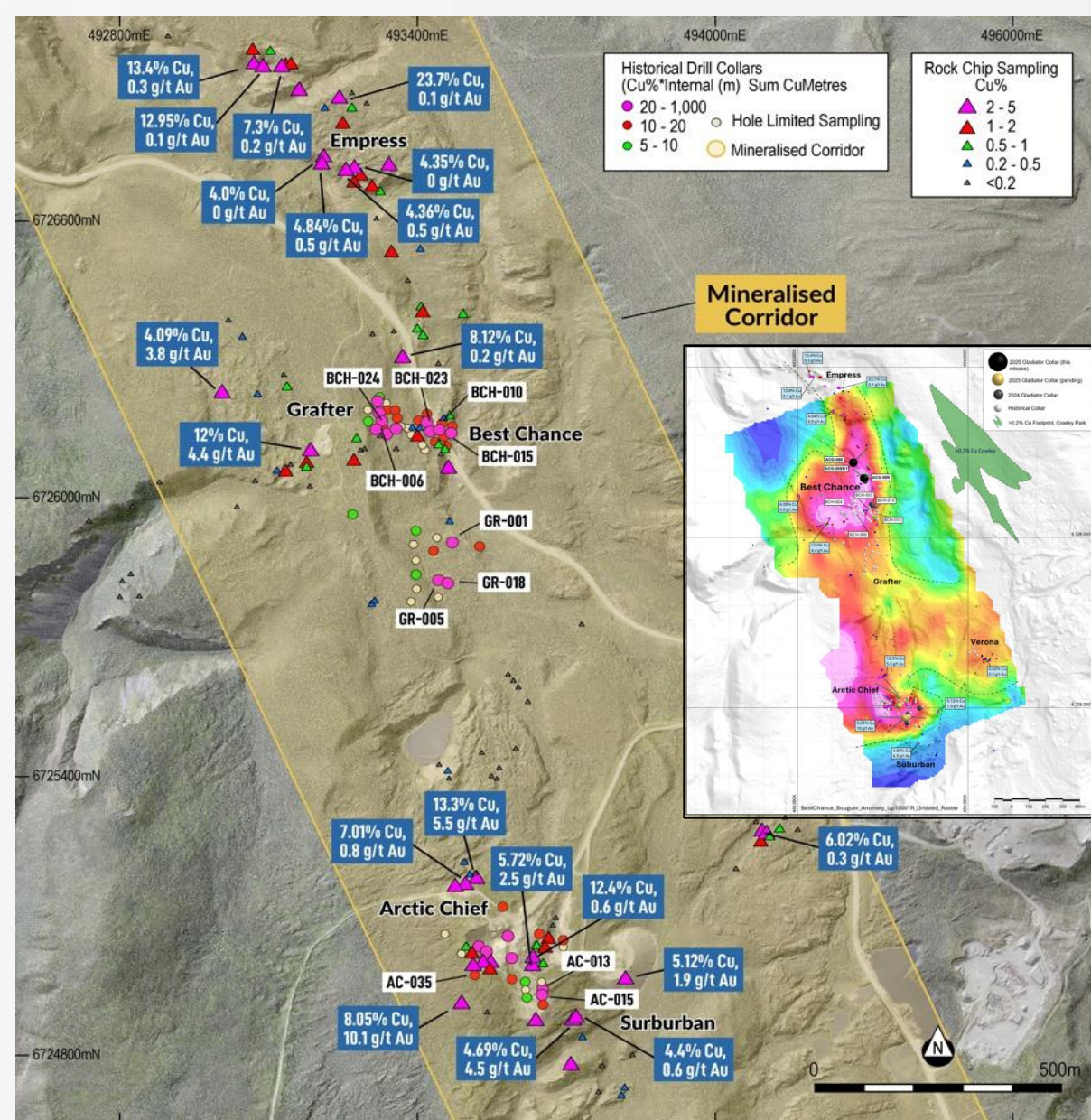


Best Chance & Arctic Chief

Arctic Chief Trend is a 2.5 km-long copper-gold trend that includes emerging discoveries at Best Chance & Arctic Chief Prospects.

- Collation of current historic drilling data at the Arctic Chief Trend has identified unmined zones of mineralization:

Best Chance Prospect		Arctic Chief Prospect	
BCH-006	<ul style="list-style-type: none"> 51.66m @ 0.67% Cu from 12.13m, Incl. 3.11m @ 1.72% & 11.79m @ 1.46% 	ACG-012D4	<ul style="list-style-type: none"> 25m @ 0.59% Cu plus 1.24 g/t Au from 44m incl.: 14m @ 0.82% Cu plus 2.06 g/t Au & 7.39 g/t Ag from 55m, incl: 6m @ 1.11% Cu plus 4.06 g/t Au & 13.23 g/t Ag from 63m.
BCH-010	<ul style="list-style-type: none"> 14.33m @ 1.33% Cu from 46.48m, Plus 3.05m @ 3.45% from 80.28m and 20.18m @ 1.50% from 88.51m Incl. 10.36m @ 2.56% 		
BCH-015	<ul style="list-style-type: none"> 31.39m @ 1.04% Cu from 54.32m, Incl. 9.14m @ 2.39% 		
BCH-023	<ul style="list-style-type: none"> 46.27m @ 1.01% from 24.38m, Incl. 25.30m @ 1.37% 		
BCH-024	<ul style="list-style-type: none"> 12.59 @ 1.09% Cu from 9.30m, Plus 5.94m @ 3.19% from 29.96m and 9.69m @ 1.15% from 73.61m 	ACG-011D1	<ul style="list-style-type: none"> 22.1m @ 0.76% Cu plus 0.51 g/t Au & 5.98 g/t Ag from 202.41m incl.: 5.59m @ 1.65% Cu from 202.41m plus 0.67 g/t Au & 14.45 g/t Ag and: 3.50m @ 1.35% Cu from 218.0m plus 1.88 g/t Au & 8.99 g/t Ag
ACG-009	<ul style="list-style-type: none"> 77.25m @ 0.70% Cu from 2.75m Incl. 18m @ 1.10% Cu from 28m 		
ACG-005	<ul style="list-style-type: none"> 52m @ 0.75% Cu and 0.28g/t Au from 142m including 30m @ 1.03% Cu and 0.33g/t Au from 162m. 		
ACG-007	<ul style="list-style-type: none"> 43m @ 0.65% Cu from 16m including 19m @ 1.05% Cu from 28m 		



Plan map of the Arctic Chief Trend with copper-gold skarn targets identified. Recently collated historical drill results with a cumulative Copper%*m of > 40 highlighted. Recent surface rock chipping completed by Gladiator also shown.

EXPLORATION STRATEGY

2025 Objectives & Execution

2025 Milestones

- ~49,000m drilling completed in 2025
- Extensive Mineralization returned in drilling
- 4 drill rigs operating
- Geophysics generated multiple new targets (gravimetric, IP).
- Drill/Assay Average <\$250/m , All in Exploration <\$300/m
- NEW DISCOVERY AT CUB EAST

2026 Objectives

- Minimum 45,000m planned for 2026 minimum 3 drill rigs
- Fully Funded with \$20m cash holding
- Class 3 Permit Approval: Provides increased and more flexible drill density
- 2026 drilling at Cowley will focus on Resource definition and expansion
- Prove up new discovery at Cub East for future high grade copper resources
- First test of new target areas (Great Southern)
- Exploration Co-Operation Agreement with Kwanlin Dun First nation

MARKET COMPARISON

Comparable TSX-listed copper companies* further advanced with reported Resources and Studies.

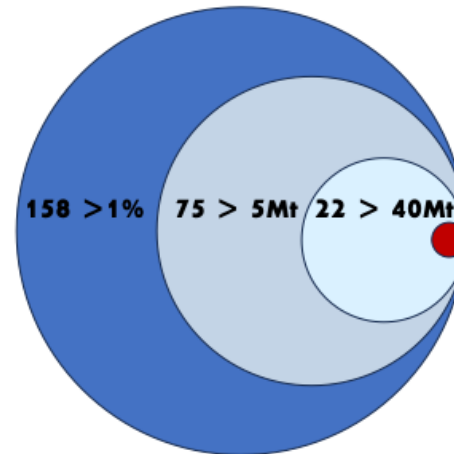
Source: Company Presentations

- **Foran Mining – Market Cap \$3.4B**
38mt at 2% Cu Eq
Permitted , in Construction
- **Marimaca Copper – Market Cap \$1.3B**
DFS Complete
179mt at 0.42% Cu
- **Arizona Sonoran – Market Cap \$1.5B**
PFS Stage
632mt at 0.58% Cu - Heap Leach
- **Meridian Mining – Market Cap \$800m**
PFS Stage
42mt at 0.63 g/t Au and 0.44% Cu

*Market caps as of November 10, 2025

UNDEVELOPED Cu PROJECTS OF THE WORLD

Headline Cu Grade of >1%*



● **4 Open Pittable**

Project	Location	Owner	MTonnes ¹	Grade
Mes Aynak ²	Afghanistan	MMC-Taliban	662.0	1.67%
Kalukundi ³	DRC	Wanboa-Managem	55.6	2.09%
Arctic	Alaska	Trilogy Metals	40.2	2.86%
San Nicolas	Mexico	Teck-AEM	105	1.12%

1. Total Mi&I where applicable, excludes co-products. 2,3-Non 43-101 Compliant, CapIQ Sources

GLADIATOR METALS - Market Cap \$86m

- Target at advanced prospects Including Cub East, Great Southern, Chiefs, Arctic Chief and Best Chance >100mt
- Pre-Resource Delivery at Cowley - 2026
- Class 3 License expected Q1 - 2026 (5-year drilling permit)

GLADIATOR

TSXV: GLAD
OTCQB: GDTRF

Thank you.

Please Contact:

Caitlin Cheadle, Investor Relations:

Email: ccheadle@gladiatormetals.com

Phone: (+1) 778 403 5139

