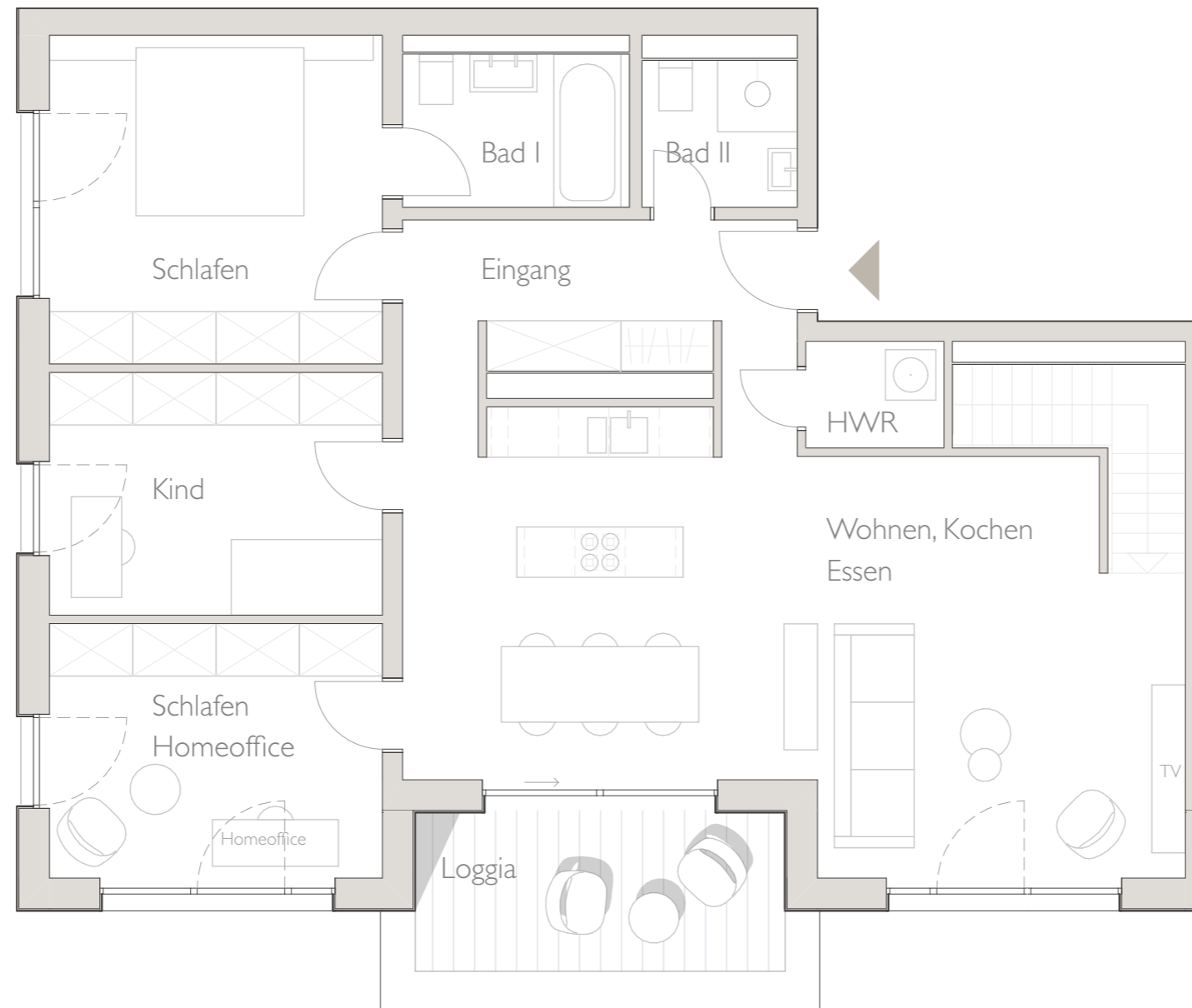


# 9



## Wohnung 9

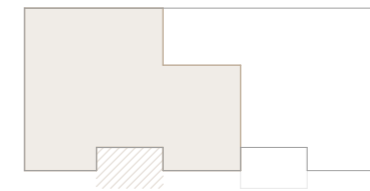
2. + 3. OBERGESCHOSS

5 Zimmer

Loggia 2. OG

Loggia 3. OG

### Lage



### Wohnfläche

Lager 9	2,02 m <sup>2</sup>	0%	0,00 m <sup>2</sup>
Bad	4,59 m <sup>2</sup>	100%	4,59 m <sup>2</sup>
Gast	16,70 m <sup>2</sup>	100%	16,70 m <sup>2</sup>
Loggia 2. OG	10,58 m <sup>2</sup>	50%	5,29 m <sup>2</sup>
Eingang	7,24 m <sup>2</sup>	100%	7,24 m <sup>2</sup>
Bad I	3,24 m <sup>2</sup>	100%	5,44 m <sup>2</sup>
Bad II	4,93 m <sup>2</sup>	100%	2,67 m <sup>2</sup>
Schlafen	15,52 m <sup>2</sup>	100%	15,02 m <sup>2</sup>
Kind	11,46 m <sup>2</sup>	100%	10,78 m <sup>2</sup>
Schlafen / Homeoffice	12,01 m <sup>2</sup>	100%	12,01 m <sup>2</sup>
HWR	10,08 m <sup>2</sup>	100%	0,90 m <sup>2</sup>
Wohnen Kochen Essen	44,08 m <sup>2</sup>	100%	44,08 m <sup>2</sup>
Loggia 3. OG	8,48 m <sup>2</sup>	50%	4,24 m <sup>2</sup>
<b>Gesamt</b>	<b>142,94 m<sup>2</sup></b>		<b>131,39 m<sup>2</sup></b>

1:75

