



RONNIE'S PLAZA

- Starbucks now open
- New pylon and monument sign
- New building facade and lighting
- High traffic retail center, anchored by Marcus Theatre

For Lease:

- Available suites
 - Suite 1: 6,419 SF
 - Suite 21-23: 5,040 SF
 - Can be divisible to
 - Suite 21: 1,676 SF
 - Suite 22: 1,658 SF
 - Suite 23: 1,702 SF

- 2 acre outlot

CONTACT

RYAN PENNINGTON

314.446.2903

rpennington@savoyproperties.com

MADDISON SCOGGINS

314.446.2904

mscoggins@savoyproperties.com

LEASE RATE: \$22.00/SF/NNN

SAVOY PROPERTIES

1034 S Brentwood Blvd, Suite 1200 | St. Louis, MO 63117 | p: 314.909.8400 | f: 314.909.8406

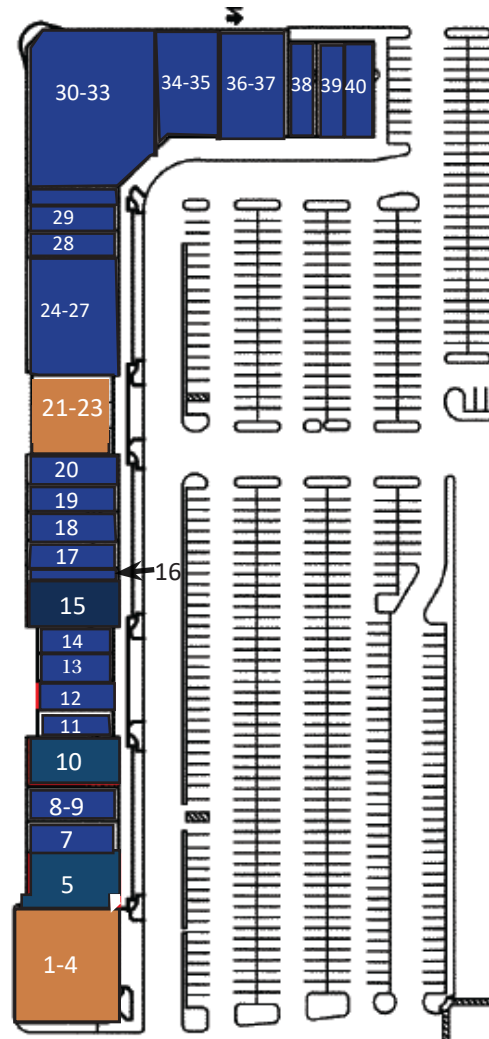
SAVOYPROPERTIES.COM

The information above has been obtained from sources we believe to be reliable. However, we have not verified its accuracy and make no guarantee, warranty or representation about it. It is submitted subject to the possibility of errors, omissions, change of price, rental or other conditions, prior sale, lease or financing, or withdrawal without notice. We include projections, opinions, assumptions or estimates for example only, and they may not represent current or future performance of the property. You and your tax and legal advisors should conduct your own investigation of the property and transaction.

CURRENT TENANTS



Suite	Tenant
1	Available (6,419 SF)
5	SSM Select Rehab STL
7	Coldstone Creamery
8	Old Republic Title of St Louis
9	Lift Chair
10	Mochinut
11	Affton Dental
12	State Farm Insurance
13	Summit Rejuvenation Center
14	Blumenfeld Family Chiropractic
15	Private
16-17	Rosen Optometry
18	Performance Salon
19	Medical West Healthcare Center
21-23	Available (5,040 SF)
24	The Skin Institute
28	Laboratory Corp of America
29	SSM Select Rehab STL
30	SSM Health Care St Louis†
34	Clothing Mentor
36	Plato's Closet
38	Mathnasium
39	Three Kings Public House



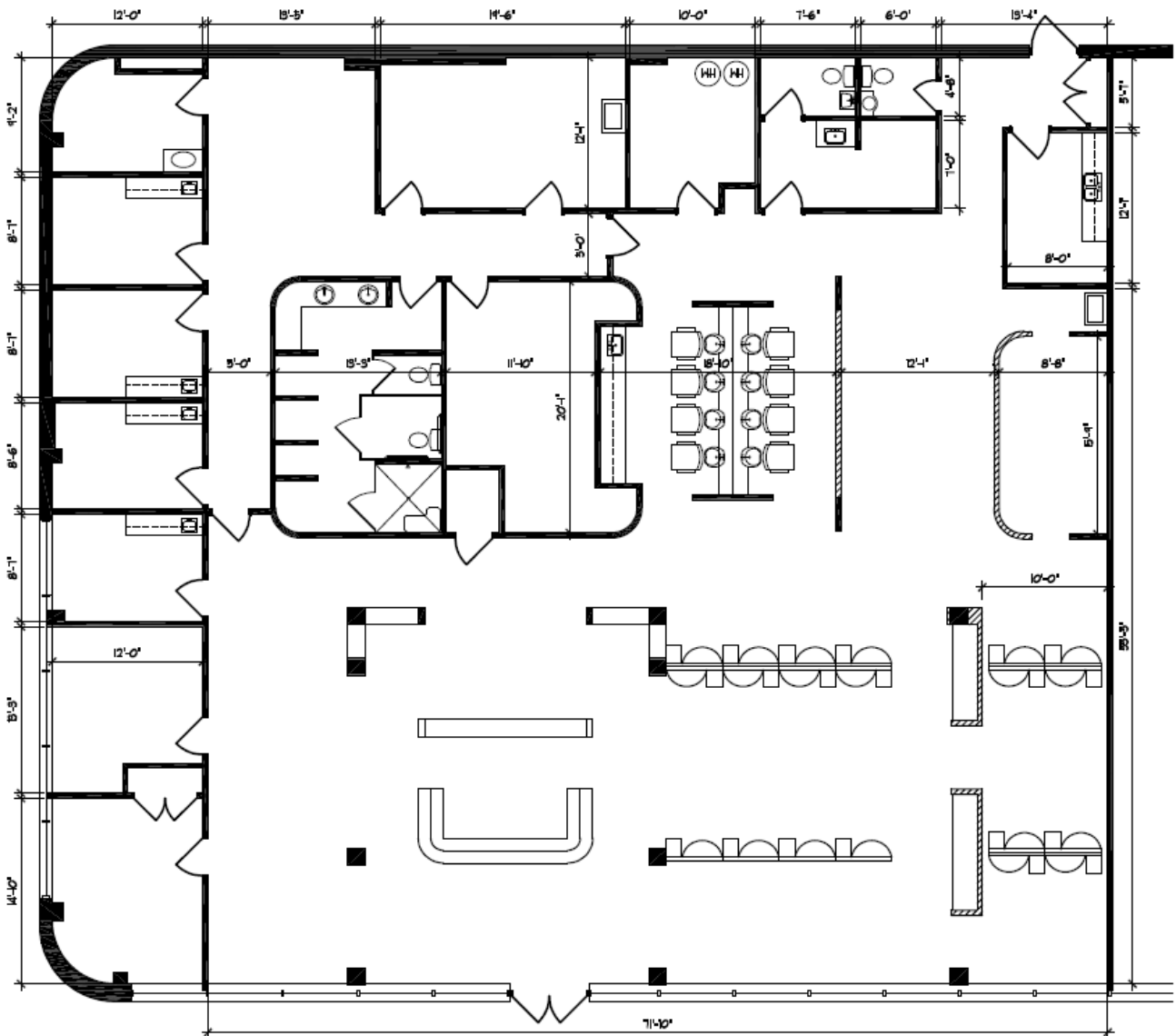
SAVOY PROPERTIES

1034 S Brentwood Blvd, Suite 1200 | St. Louis, MO 63117 | p: 314.909.8400 | f: 314.909.8406

SAVOYPROPERTIES.COM

The information above has been obtained from sources we believe to be reliable. However, we have not verified its accuracy and make no guarantee, warranty or representation about it. It is submitted subject to the possibility of errors, omissions, change of price, rental or other conditions, prior sale, lease or financing, or withdrawal without notice. We include projections, opinions, assumptions or estimates for example only, and they may not represent current or future performance of the property. You and your tax and legal advisors should conduct your own investigation of the property and transaction.

SUITE 1 - EXISTING FLOOR PLAN



SAVOY PROPERTIES

1034 S Brentwood Blvd, Suite 1200 | St. Louis, MO 63117 | p: 314.909.8400 | f: 314.909.8406

SAVOYPROPERTIES.COM

The information above has been obtained from sources we believe to be reliable. However, we have not verified its accuracy and make no guarantee, warranty or representation about it. It is submitted subject to the possibility of errors, omissions, change of price, rental or other conditions, prior sale, lease or financing, or withdrawal without notice. We include projections, opinions, assumptions or estimates for example only, and they may not represent current or future performance of the property. You and your tax and legal advisors should conduct your own investigation of the property and transaction.

AERIAL MAP



SAVOY PROPERTIES

1034 S Brentwood Blvd, Suite 1200 | St. Louis, MO 63117 | p: 314.909.8400 | f: 314.909.8406

SAVOYPROPERTIES.COM

The information above has been obtained from sources we believe to be reliable. However, we have not verified its accuracy and make no guarantee, warranty or representation about it. It is submitted subject to the possibility of errors, omissions, change of price, rental or other conditions, prior sale, lease or financing, or withdrawal without notice. We include projections, opinions, assumptions or estimates for example only, and they may not represent current or future performance of the property. You and your tax and legal advisors should conduct your own investigation of the property and transaction.