

Property Details

Location	Town of Colonie, Albany County, NY
Year Built	1973
Average Floor Plate	25,000 square feet
HVAC System	Multi-zone closed loop heat pump system
Telecommunications	Multiple fiber optic providers
Parking	Ample parking included in rent
Elevator	2 passenger, 1 freight
Fire Protection Service	Sprinklers throughout building
Security	Card access system for after-hours building access
Loading Dock	1 Bay loading dock
After Hours HVAC Controls	EMS System
ENERGY STAR Certified	



This four-story building is well located in the Wolf Road submarket of Albany. Immediately adjacent to both I-90 and I-87, Wolf Road offers easy access to residential and retail concentrations. The excellent exposure to roadways and efficient 25,000 square-foot floor plates make the property ideal for high-profile tenants.

Brokers

William Picotte
Wpicotte@picotte.com

Tim McGuire
Tmcguire@picotte.com

518.465.4747

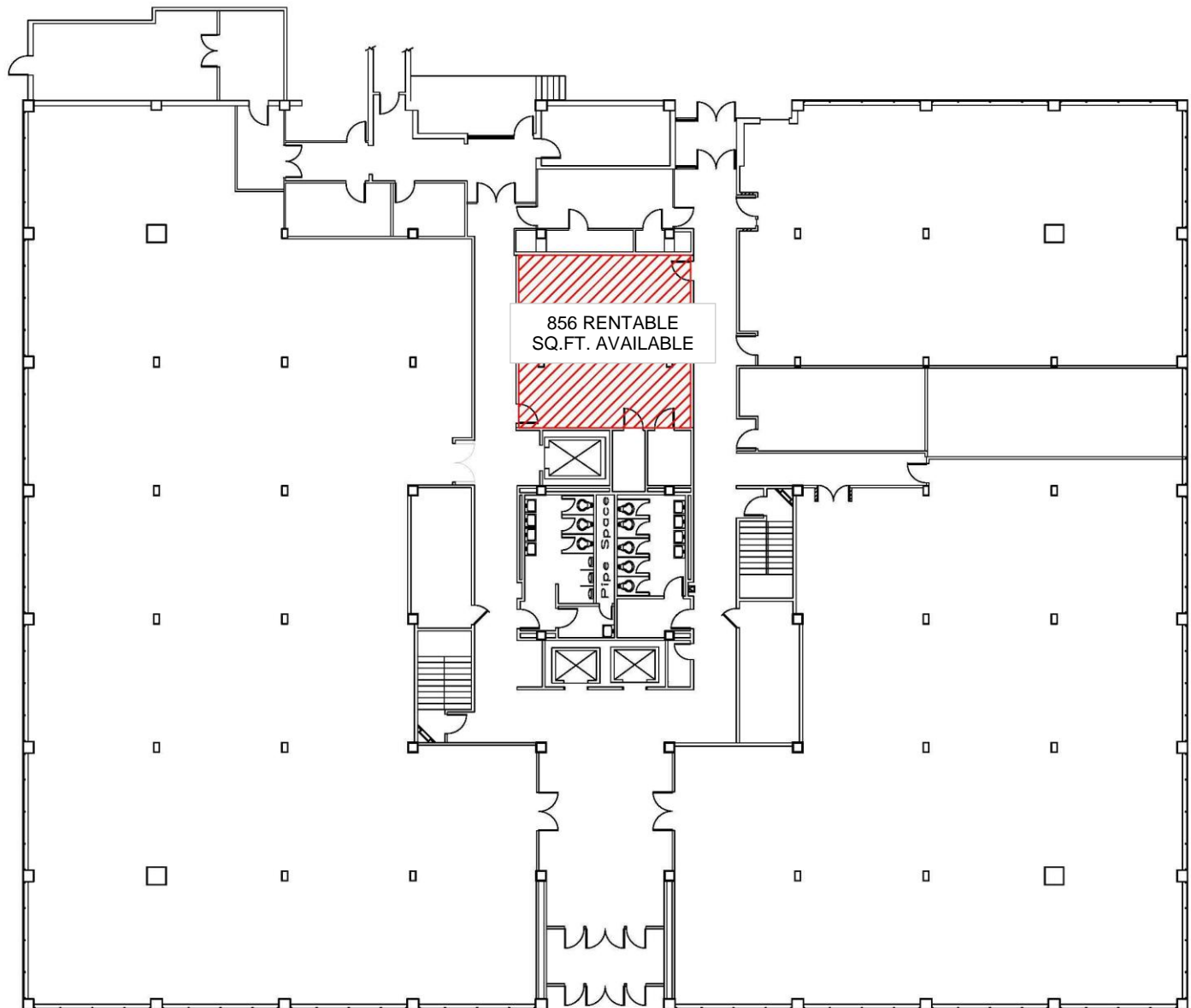
Property Floor Plan

One Park Place

Albany, NY 12205

MAIN FLOOR

856 RENTABLE SQ. FEET



Property Floor Plan

One Park Place

Albany, NY 12205

SECOND FLOOR

2,548 RENTABLE SQ. FEET

