



1450 Western Avenue

Town of Guilderland · Albany, New York · 12203

Property Details

Location	Town of Guilderland, Albany County, NY
Year Built	1978
Average Floor Plate	26,000 square feet
HVAC System	Multi-zone unit system
Telecommunications	Multiple fiber optic providers
Parking	Ample parking included in rent
Elevator	2 passenger, 1 freight
Fire Protection Service	Sprinkler system
Security	Card access system
Loading Dock	1 Bay loading dock
After Hours HVAC Controls	EMS System
Specialties	Café on premises

ENERGY STAR
Certified



For a business address with the right combination of location and prestige, consider 1450 Western Avenue. Located strategically near I-87 and I-90, it is minutes from shopping, restaurants and residential neighborhoods. A five-story steel and glass curtain wall is a striking exterior feature. 26,000 square feet of office space on each floor accommodates a variety of floor plans. Recent renovations include installation of new lighting and HVAC systems. 1450 Western Avenue provides a full-time superintendent on site as well as ample parking in beautifully landscaped, well-lit adjacent parking areas.

Brokers

William Picotte
Wpicotte@picotte.com

Tim McGuire
Tmcguire@picotte.com

518.465.4747

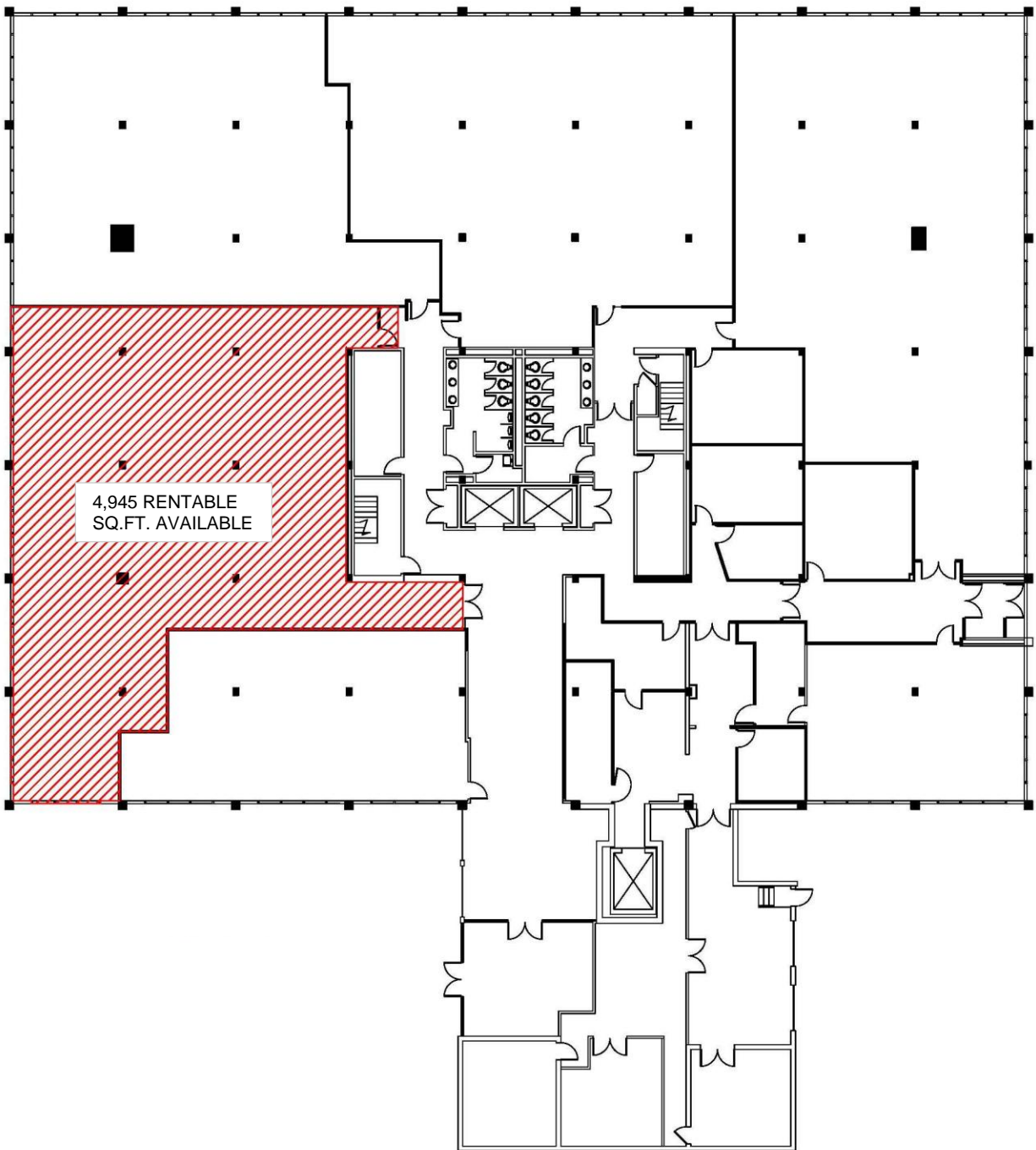
Property Floor Plan

1450 Western Avenue

Albany, NY 12211

FIRST FLOOR

4,945 RENTABLE SQ. FEET



Property Floor Plan

1450 Western Avenue

Albany, NY 12211

THIRD FLOOR

MULTIPLE SPACE AVAILABLE

