



MARY MOUNT HOTEL

— Keswick —

Celebrate
**THE FESTIVE
SEASON**

AT THE MARY MOUNT HOTEL

MERRY CHRISTMAS & HAPPY NEW YEAR
THE FESTIVE SEASON 2025/26



Season's Greeting	03
A warm welcome awaits you this 2025/26 festive season at The Mary Mount Hotel.	
Christmas	04
Sit back, relax, and enjoy the most wonderful time of the year.	
New Year	06
Ring in the new year in style, without having to lift a finger.	
Packages	08
Whether your'e travelling alone or with loved ones, we have a tailored solution for you.	
Photo Gallery	10
A glimpse into our world-class facilities.	

Content

SEASON'S GREETING

It's The Most Wonderful Time of The Year, Step into the magic of Christmas and experience the warmth, friendly and exceptional hospitality that defines our festive offering.

Join us for peaceful cosy winter retreat, our dedicated team is committed to ensuring every moment is memorable.

With carefully curated menus and beautiful views of Derwentwater and Catbells, Mary Mount provides the perfect setting to celebrate Christmas.

Thank you for choosing Mary Mount Hotel as your festive haven. May your stay with us be filled with peace, joy, and the beauty of the season.

We look forward to creating unforgettable moments together.

Arek Malisz
Arek Malisz, General Manager



Christmas

2025/26 festive season

23RD DECEMBER

ARRIVAL DAY & CHECK-IN

TUESDAY

For those guests with a little extra time, check in a day early and relax.

Let us pour you a drink at the bar while you sneak a peek at the menu for dinner.



2025/26 festive season

25TH DECEMBER

CHRISTMAS DAY

THURSDAY

Christmas morning at Mary Mount begins with a leisurely breakfast from 8:30 to 10am. Spend the afternoon your way, pre-order a packed lunch for your outing, or relax with board games, cards, and endless mince pies, cake, and coffee in the lounge.

The bar will be serving your favourite festive tipples, and in the evening, join us for our indulgent Christmas Dinner at 17:30 or 19:00- party hats encouraged!



2025/26 festive season

27TH DECEMBER

TIME TO SAY GOODBYE

SATURDAY

It's time to say goodbye. After a final breakfast we can help you pack up your car and send you on your way. We wish all our guests the very best wishes for the new year!



2025/26 festive season

24TH DECEMBER

CHRISTMAS EVE

WEDNESDAY

Start the day with our famous Full English before exploring Derwentwater or hiking up Cat Bells. New arrivals can check in from 3pm, with bags whisked up to your cosy room.

Dinner is served from 17:30, and the local choir often drops by for festive carols, join in if you wish!



2025/26 festive season

26TH DECEMBER

BOXING DAY

FRIDAY

Start the day with a lighter breakfast, perhaps avocado and poached eggs or Eggs Benedict. Enjoy a scenic walk to Ladore Falls, Surprise View, and Ashness Bridge, or browse the sales in Keswick.

Alongside our usual lunch menu, we're serving our famous roasts, book at reception to secure your table. The restaurant is open 17:30–21:00, if you have room!



Step into the magic of Christmas at The Mary Mount, where every moment is planned to enchant and delight. Our festive programme is filled with special touches for every guest, creating a holiday season you'll remember for years to come. Here's a little taste of what awaits you...



New Year

Celebrate in comfort and style with a cosy Lake District escape. Arrive to a warm welcome, festive décor, and a delicious chef-crafted dinner before raising a glass of champagne at midnight. After a restful night, enjoy a hearty breakfast and perhaps a refreshing walk by Derwentwater to start 2026 restored and recharged. Whether you're here to relax or celebrate with loved ones, Mary Mount is the perfect place to welcome the year ahead.

2025/26 festive season

30TH DECEMBER

ARRIVAL DAY & CHECK-IN

TUESDAY

Begin your New Year's retreat with a warm welcome and a delicious dinner.

Settle into the cosy ambiance of our hotel and enjoy an evening of relaxation, preparing for the festive days to come



2025/26 festive season

1ST JANUARY

NEW YEAR'S DAY

THURSDAY

After a refreshing breakfast, spend the day at your leisure, perhaps by exploring the scenic surroundings like Ladore Falls and Surprise View.

In the evening, delight in a delectable dinner.



2025/26 festive season

2ND JANUARY

A FOND FAREWELL & SEE YOU SOON

FRIDAY

Conclude your festive stay with a hearty breakfast.

Take a final stroll through the picturesque Lake District or relax in our back bar or restaurant overlooking the lake.

As you depart, carry with you the joy of the celebrations and our warmest wishes for the year ahead.



2025/26 festive season

31ST DECEMBER

NEW YEAR'S EVE CELEBRATIONS

WEDNESDAY

A delightful breakfast awaits to energise for the day ahead.

In the evening, indulge in an exquisite dinner.

As midnight approaches, gather with us to usher in 2026 with a glass of bubbly.



CHRISTMAS DATES & RATES

At Mary Mount, we're blessed with an array of fun and enchanting activities on our doorstep all year, but the festive season is truly magical. Join us this year for a traditional Christmas experience where every aspect is completely taken care of.

TO BOOK: 017687 77223 | info@marymounthotel.co.uk



FROM PRICES	3 NIGHTS
3 NIGHTS ARRIVAL 24TH DECEMBER	£840
4 NIGHTS ARRIVAL 23RD DECEMBER	£1,110
5 NIGHTS ARRIVAL 23RD DECEMBER	£1,250

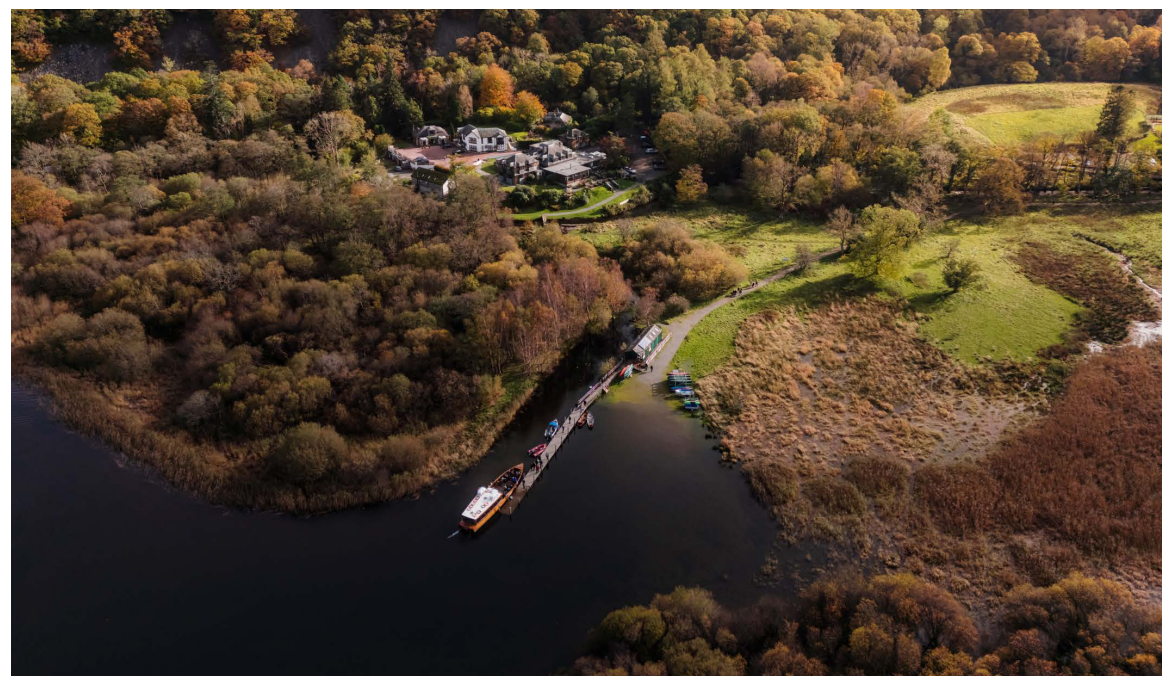
NEW YEAR DATES & RATES

Welcome 2026 in style at The Mary Mount. Savour gourmet dining and champagne as the bells ring in the New Year, then start January 1st with a refreshing winter walk through our beautiful grounds. Leave feeling relaxed, restored, and ready to embrace the year ahead.

TO BOOK: 017687 77223 | info@marymounthotel.co.uk



FROM PRICES	3 NIGHTS
3 NIGHTS ARRIVAL 30TH DECEMBER	£840
4 NIGHTS ARRIVAL 29TH DECEMBER	£1,110
5 NIGHTS ARRIVAL 28TH DECEMBER	£1,250



CREATING LASTING MEMORIES IN THE LAKE DISTRICT

May the spirit of the season stay with you, bringing happiness and peace in the months to come. We eagerly await your return, ready to welcome you back for more unforgettable experiences at The Mary Mount Hotel. Until then, we wish you a wonderful year ahead filled with joy, adventure, and the promise of new beginnings.



THE 2025/26 FESTIVE SEASON

Borrowdale, Keswick, Cumbria, CA12 5UU
T. 017687 77223 E. info@marymounthotel.co.uk
W. marymounthotel.co.uk