

NOTES:

1. THE INFORMATION CONTAINED HEREIN IS FOR GENERAL INFORMATION ONLY AND DOES NOT CONSTITUTE A CONTRACT. THE CONTRACT IS THE AGREEMENT BETWEEN THE OWNER AND THE ARCHITECT, DATED 08-05-25.

2. THE ARCHITECT HAS NOT CONDUCTED A VISUAL SURVEY OF THE EXISTING CONDITIONS OF THE PROJECT. THE ARCHITECT HAS RELIED ON THE INFORMATION PROVIDED BY THE OWNER AND THE RECORD DRAWINGS.

3. THE ARCHITECT HAS NOT CONDUCTED A VISUAL SURVEY OF THE EXISTING CONDITIONS OF THE PROJECT. THE ARCHITECT HAS RELIED ON THE INFORMATION PROVIDED BY THE OWNER AND THE RECORD DRAWINGS.

4. THE ARCHITECT HAS NOT CONDUCTED A VISUAL SURVEY OF THE EXISTING CONDITIONS OF THE PROJECT. THE ARCHITECT HAS RELIED ON THE INFORMATION PROVIDED BY THE OWNER AND THE RECORD DRAWINGS.

5. THE ARCHITECT HAS NOT CONDUCTED A VISUAL SURVEY OF THE EXISTING CONDITIONS OF THE PROJECT. THE ARCHITECT HAS RELIED ON THE INFORMATION PROVIDED BY THE OWNER AND THE RECORD DRAWINGS.

1ST FLOOR PLAN

LEASING PLAN - SPACE 1

88-05 76TH AVENUE  
RIDGEWOOD, NY 11305

DRAWN: IF

DESIGN: IF

CHECK: IF

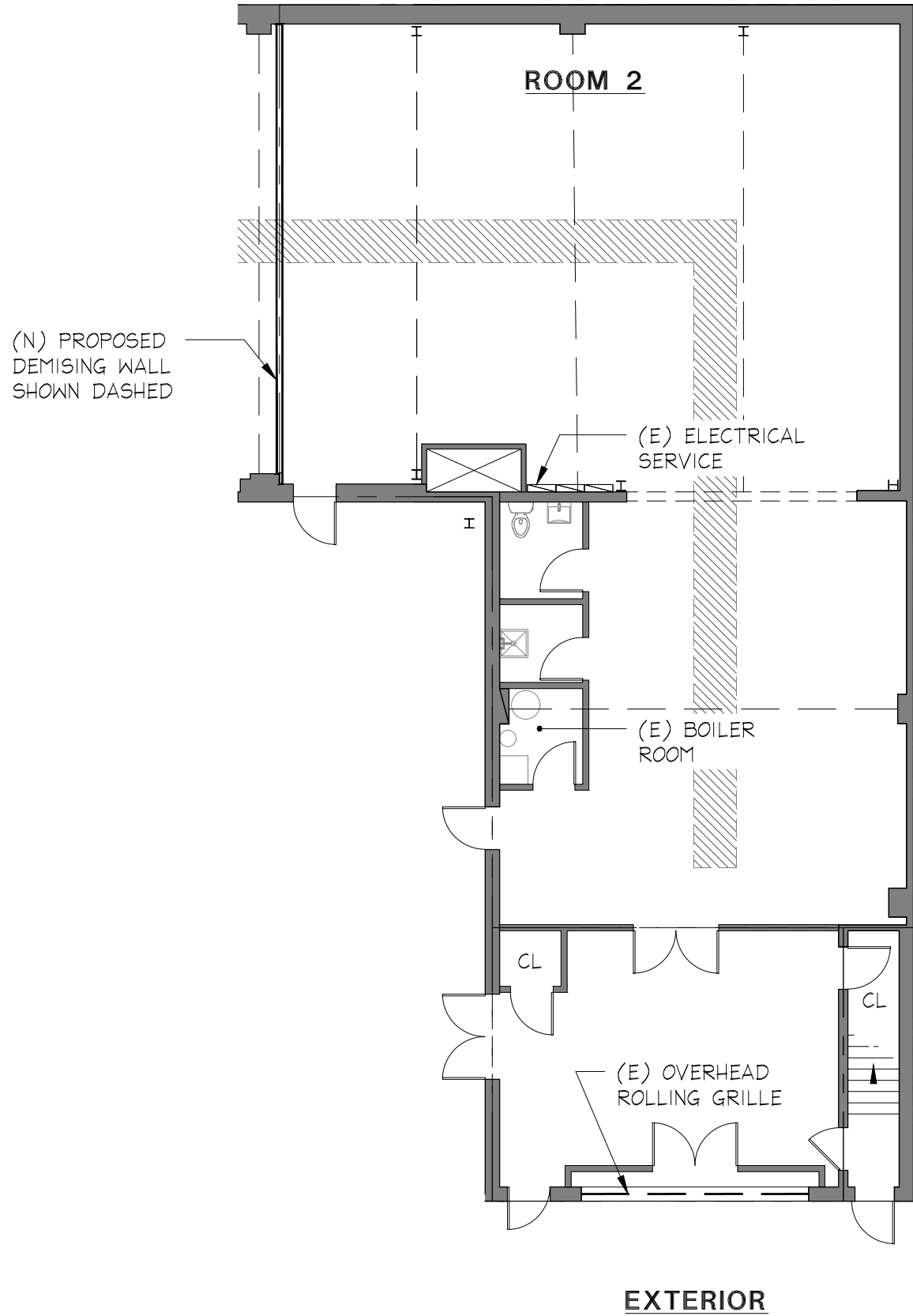
SCALE: 3/32" = 1'-0"

ISSUE DATE: 08-05-25

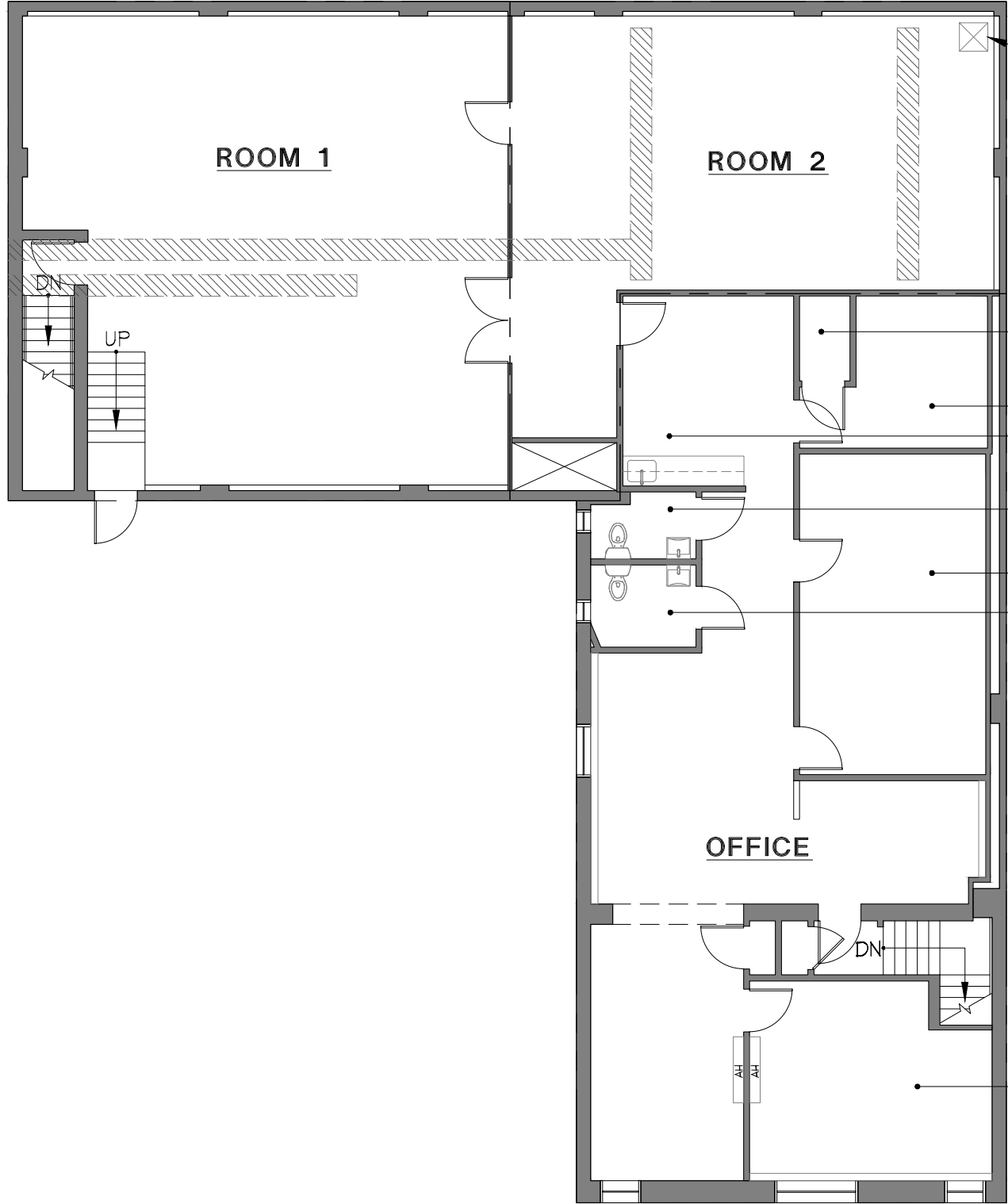
REVISIONS:

SHEET

1 OF 2



NOTES: 1. ALL DIMENSIONS ARE TO FACE UNLESS NOTED OTHERWISE. 2. ALL WALLS ARE 1/2" THICK UNLESS NOTED OTHERWISE. 3. ALL DOORS ARE 3'0" HIGH BY 2'0" WIDE UNLESS NOTED OTHERWISE. 4. ALL WINDOWS ARE 6'0" HIGH BY 4'0" WIDE UNLESS NOTED OTHERWISE. 5. ALL FLOORS ARE 4" THICK CONCRETE UNLESS NOTED OTHERWISE. 6. ALL CEILINGS ARE 8'0" HIGH UNLESS NOTED OTHERWISE. 7. ALL ROOFS ARE 4" THICK CONCRETE UNLESS NOTED OTHERWISE. 8. ALL FOUNDATIONS ARE 12" THICK CONCRETE UNLESS NOTED OTHERWISE. 9. ALL STRUCTURAL STEEL IS AISC STANDARD. 10. ALL MECHANICAL EQUIPMENT IS TO BE INSTALLED IN ACCORDANCE WITH THE MANUFACTURER'S INSTRUCTIONS. 11. ALL ELECTRICAL EQUIPMENT IS TO BE INSTALLED IN ACCORDANCE WITH THE NATIONAL ELECTRICAL CODE (NEC). 12. ALL PLUMBING EQUIPMENT IS TO BE INSTALLED IN ACCORDANCE WITH THE INTERNATIONAL PLUMBING CODE (IPC). 13. ALL FIRE PROTECTION EQUIPMENT IS TO BE INSTALLED IN ACCORDANCE WITH THE NATIONAL FIRE PROTECTION ASSOCIATION (NFPA) CODE. 14. ALL SAFETY EQUIPMENT IS TO BE INSTALLED IN ACCORDANCE WITH THE AMERICAN NATIONAL STANDARDS INSTITUTE (ANSI) CODE. 15. ALL SIGNAGE IS TO BE INSTALLED IN ACCORDANCE WITH THE INTERNATIONAL SIGNAGE ASSOCIATION (ISA) CODE. 16. ALL LANDSCAPING IS TO BE INSTALLED IN ACCORDANCE WITH THE INTERNATIONAL LANDSCAPE ARCHITECTS ASSOCIATION (ILA) CODE. 17. ALL UTILITIES ARE TO BE INSTALLED IN ACCORDANCE WITH THE INTERNATIONAL UTILITIES ASSOCIATION (IUA) CODE. 18. ALL TRANSPORTATION EQUIPMENT IS TO BE INSTALLED IN ACCORDANCE WITH THE INTERNATIONAL TRANSPORTATION ASSOCIATION (ITA) CODE. 19. ALL COMMUNICATIONS EQUIPMENT IS TO BE INSTALLED IN ACCORDANCE WITH THE INTERNATIONAL COMMUNICATIONS ASSOCIATION (ICA) CODE. 20. ALL RECREATION EQUIPMENT IS TO BE INSTALLED IN ACCORDANCE WITH THE INTERNATIONAL RECREATION ASSOCIATION (IRA) CODE. 21. ALL EDUCATION EQUIPMENT IS TO BE INSTALLED IN ACCORDANCE WITH THE INTERNATIONAL EDUCATION ASSOCIATION (IEA) CODE. 22. ALL HEALTHCARE EQUIPMENT IS TO BE INSTALLED IN ACCORDANCE WITH THE INTERNATIONAL HEALTHCARE ASSOCIATION (IHA) CODE. 23. ALL AGRICULTURE EQUIPMENT IS TO BE INSTALLED IN ACCORDANCE WITH THE INTERNATIONAL AGRICULTURE ASSOCIATION (IAA) CODE. 24. ALL INDUSTRY EQUIPMENT IS TO BE INSTALLED IN ACCORDANCE WITH THE INTERNATIONAL INDUSTRY ASSOCIATION (IIA) CODE. 25. ALL CONSTRUCTION EQUIPMENT IS TO BE INSTALLED IN ACCORDANCE WITH THE INTERNATIONAL CONSTRUCTION ASSOCIATION (ICA) CODE. 26. ALL MAINTENANCE EQUIPMENT IS TO BE INSTALLED IN ACCORDANCE WITH THE INTERNATIONAL MAINTENANCE ASSOCIATION (IMA) CODE. 27. ALL REPAIR EQUIPMENT IS TO BE INSTALLED IN ACCORDANCE WITH THE INTERNATIONAL REPAIR ASSOCIATION (IRA) CODE. 28. ALL REPLACEMENT EQUIPMENT IS TO BE INSTALLED IN ACCORDANCE WITH THE INTERNATIONAL REPLACEMENT ASSOCIATION (IRA) CODE. 29. ALL UPGRADE EQUIPMENT IS TO BE INSTALLED IN ACCORDANCE WITH THE INTERNATIONAL UPGRADE ASSOCIATION (IUA) CODE. 30. ALL MODERNIZATION EQUIPMENT IS TO BE INSTALLED IN ACCORDANCE WITH THE INTERNATIONAL MODERNIZATION ASSOCIATION (IMA) CODE. 31. ALL RENOVATION EQUIPMENT IS TO BE INSTALLED IN ACCORDANCE WITH THE INTERNATIONAL RENOVATION ASSOCIATION (IRA) CODE. 32. ALL RESTORATION EQUIPMENT IS TO BE INSTALLED IN ACCORDANCE WITH THE INTERNATIONAL RESTORATION ASSOCIATION (IRA) CODE. 33. ALL PRESERVATION EQUIPMENT IS TO BE INSTALLED IN ACCORDANCE WITH THE INTERNATIONAL PRESERVATION ASSOCIATION (IPA) CODE. 34. ALL PROTECTION EQUIPMENT IS TO BE INSTALLED IN ACCORDANCE WITH THE INTERNATIONAL PROTECTION ASSOCIATION (IPA) CODE. 35. ALL SECURITY EQUIPMENT IS TO BE INSTALLED IN ACCORDANCE WITH THE INTERNATIONAL SECURITY ASSOCIATION (ISA) CODE. 36. ALL DEFENSE EQUIPMENT IS TO BE INSTALLED IN ACCORDANCE WITH THE INTERNATIONAL DEFENSE ASSOCIATION (IDA) CODE. 37. ALL OFFENSE EQUIPMENT IS TO BE INSTALLED IN ACCORDANCE WITH THE INTERNATIONAL OFFENSE ASSOCIATION (IOA) CODE. 38. ALL CRIME EQUIPMENT IS TO BE INSTALLED IN ACCORDANCE WITH THE INTERNATIONAL CRIME ASSOCIATION (ICA) CODE. 39. ALL VIOLENCE EQUIPMENT IS TO BE INSTALLED IN ACCORDANCE WITH THE INTERNATIONAL VIOLENCE ASSOCIATION (IVA) CODE. 40. ALL WEAPONRY EQUIPMENT IS TO BE INSTALLED IN ACCORDANCE WITH THE INTERNATIONAL WEAPONRY ASSOCIATION (IWA) CODE. 41. ALL ARMED AND DANGEROUS EQUIPMENT IS TO BE INSTALLED IN ACCORDANCE WITH THE INTERNATIONAL ARMED AND DANGEROUS ASSOCIATION (IADA) CODE. 42. ALL HAZARDOUS EQUIPMENT IS TO BE INSTALLED IN ACCORDANCE WITH THE INTERNATIONAL HAZARDOUS ASSOCIATION (IHA) CODE. 43. ALL TOXIC EQUIPMENT IS TO BE INSTALLED IN ACCORDANCE WITH THE INTERNATIONAL TOXIC ASSOCIATION (ITA) CODE. 44. ALL CORROSIVE EQUIPMENT IS TO BE INSTALLED IN ACCORDANCE WITH THE INTERNATIONAL CORROSIVE ASSOCIATION (ICA) CODE. 45. ALL FLAMMABLE EQUIPMENT IS TO BE INSTALLED IN ACCORDANCE WITH THE INTERNATIONAL FLAMMABLE ASSOCIATION (IFA) CODE. 46. ALL EXPLOSIVE EQUIPMENT IS TO BE INSTALLED IN ACCORDANCE WITH THE INTERNATIONAL EXPLOSIVE ASSOCIATION (IEA) CODE. 47. ALL RADIOACTIVE EQUIPMENT IS TO BE INSTALLED IN ACCORDANCE WITH THE INTERNATIONAL RADIOACTIVE ASSOCIATION (IRA) CODE. 48. ALL NUCLEAR EQUIPMENT IS TO BE INSTALLED IN ACCORDANCE WITH THE INTERNATIONAL NUCLEAR ASSOCIATION (INA) CODE. 49. ALL BIOLOGICAL EQUIPMENT IS TO BE INSTALLED IN ACCORDANCE WITH THE INTERNATIONAL BIOLOGICAL ASSOCIATION (IBA) CODE. 50. ALL CHEMICAL EQUIPMENT IS TO BE INSTALLED IN ACCORDANCE WITH THE INTERNATIONAL CHEMICAL ASSOCIATION (ICA) CODE. 51. ALL PHYSICAL EQUIPMENT IS TO BE INSTALLED IN ACCORDANCE WITH THE INTERNATIONAL PHYSICAL ASSOCIATION (IPA) CODE. 52. ALL MATHEMATICAL EQUIPMENT IS TO BE INSTALLED IN ACCORDANCE WITH THE INTERNATIONAL MATHEMATICAL ASSOCIATION (IMA) CODE. 53. ALL SCIENTIFIC EQUIPMENT IS TO BE INSTALLED IN ACCORDANCE WITH THE INTERNATIONAL SCIENTIFIC ASSOCIATION (ISA) CODE. 54. ALL MEDICAL EQUIPMENT IS TO BE INSTALLED IN ACCORDANCE WITH THE INTERNATIONAL MEDICAL ASSOCIATION (IMA) CODE. 55. ALL VETERINARY EQUIPMENT IS TO BE INSTALLED IN ACCORDANCE WITH THE INTERNATIONAL VETERINARY ASSOCIATION (IVA) CODE. 56. ALL AGRICULTURAL EQUIPMENT IS TO BE INSTALLED IN ACCORDANCE WITH THE INTERNATIONAL AGRICULTURAL ASSOCIATION (IAA) CODE. 57. ALL INDUSTRIAL EQUIPMENT IS TO BE INSTALLED IN ACCORDANCE WITH THE INTERNATIONAL INDUSTRIAL ASSOCIATION (IIA) CODE. 58. ALL CONSTRUCTION EQUIPMENT IS TO BE INSTALLED IN ACCORDANCE WITH THE INTERNATIONAL CONSTRUCTION ASSOCIATION (ICA) CODE. 59. ALL MAINTENANCE EQUIPMENT IS TO BE INSTALLED IN ACCORDANCE WITH THE INTERNATIONAL MAINTENANCE ASSOCIATION (IMA) CODE. 60. ALL REPAIR EQUIPMENT IS TO BE INSTALLED IN ACCORDANCE WITH THE INTERNATIONAL REPAIR ASSOCIATION (IRA) CODE. 61. ALL REPLACEMENT EQUIPMENT IS TO BE INSTALLED IN ACCORDANCE WITH THE INTERNATIONAL REPLACEMENT ASSOCIATION (IRA) CODE. 62. ALL UPGRADE EQUIPMENT IS TO BE INSTALLED IN ACCORDANCE WITH THE INTERNATIONAL UPGRADE ASSOCIATION (IUA) CODE. 63. ALL MODERNIZATION EQUIPMENT IS TO BE INSTALLED IN ACCORDANCE WITH THE INTERNATIONAL MODERNIZATION ASSOCIATION (IMA) CODE. 64. ALL RENOVATION EQUIPMENT IS TO BE INSTALLED IN ACCORDANCE WITH THE INTERNATIONAL RENOVATION ASSOCIATION (IRA) CODE. 65. ALL RESTORATION EQUIPMENT IS TO BE INSTALLED IN ACCORDANCE WITH THE INTERNATIONAL RESTORATION ASSOCIATION (IRA) CODE. 66. ALL PRESERVATION EQUIPMENT IS TO BE INSTALLED IN ACCORDANCE WITH THE INTERNATIONAL PRESERVATION ASSOCIATION (IPA) CODE. 67. ALL PROTECTION EQUIPMENT IS TO BE INSTALLED IN ACCORDANCE WITH THE INTERNATIONAL PROTECTION ASSOCIATION (IPA) CODE. 68. ALL SECURITY EQUIPMENT IS TO BE INSTALLED IN ACCORDANCE WITH THE INTERNATIONAL SECURITY ASSOCIATION (ISA) CODE. 69. ALL DEFENSE EQUIPMENT IS TO BE INSTALLED IN ACCORDANCE WITH THE INTERNATIONAL DEFENSE ASSOCIATION (IDA) CODE. 70. ALL OFFENSE EQUIPMENT IS TO BE INSTALLED IN ACCORDANCE WITH THE INTERNATIONAL OFFENSE ASSOCIATION (IOA) CODE. 71. ALL CRIME EQUIPMENT IS TO BE INSTALLED IN ACCORDANCE WITH THE INTERNATIONAL CRIME ASSOCIATION (ICA) CODE. 72. ALL VIOLENCE EQUIPMENT IS TO BE INSTALLED IN ACCORDANCE WITH THE INTERNATIONAL VIOLENCE ASSOCIATION (IVA) CODE. 73. ALL WEAPONRY EQUIPMENT IS TO BE INSTALLED IN ACCORDANCE WITH THE INTERNATIONAL WEAPONRY ASSOCIATION (IWA) CODE. 74. ALL ARMED AND DANGEROUS EQUIPMENT IS TO BE INSTALLED IN ACCORDANCE WITH THE INTERNATIONAL ARMED AND DANGEROUS ASSOCIATION (IADA) CODE. 75. ALL HAZARDOUS EQUIPMENT IS TO BE INSTALLED IN ACCORDANCE WITH THE INTERNATIONAL HAZARDOUS ASSOCIATION (IHA) CODE. 76. ALL TOXIC EQUIPMENT IS TO BE INSTALLED IN ACCORDANCE WITH THE INTERNATIONAL TOXIC ASSOCIATION (ITA) CODE. 77. ALL CORROSIVE EQUIPMENT IS TO BE INSTALLED IN ACCORDANCE WITH THE INTERNATIONAL CORROSIVE ASSOCIATION (ICA) CODE. 78. ALL FLAMMABLE EQUIPMENT IS TO BE INSTALLED IN ACCORDANCE WITH THE INTERNATIONAL FLAMMABLE ASSOCIATION (IFA) CODE. 79. ALL EXPLOSIVE EQUIPMENT IS TO BE INSTALLED IN ACCORDANCE WITH THE INTERNATIONAL EXPLOSIVE ASSOCIATION (IEA) CODE. 80. ALL RADIOACTIVE EQUIPMENT IS TO BE INSTALLED IN ACCORDANCE WITH THE INTERNATIONAL RADIOACTIVE ASSOCIATION (IRA) CODE. 81. ALL NUCLEAR EQUIPMENT IS TO BE INSTALLED IN ACCORDANCE WITH THE INTERNATIONAL NUCLEAR ASSOCIATION (INA) CODE. 82. ALL BIOLOGICAL EQUIPMENT IS TO BE INSTALLED IN ACCORDANCE WITH THE INTERNATIONAL BIOLOGICAL ASSOCIATION (IBA) CODE. 83. ALL CHEMICAL EQUIPMENT IS TO BE INSTALLED IN ACCORDANCE WITH THE INTERNATIONAL CHEMICAL ASSOCIATION (ICA) CODE. 84. ALL PHYSICAL EQUIPMENT IS TO BE INSTALLED IN ACCORDANCE WITH THE INTERNATIONAL PHYSICAL ASSOCIATION (IPA) CODE. 85. ALL MATHEMATICAL EQUIPMENT IS TO BE INSTALLED IN ACCORDANCE WITH THE INTERNATIONAL MATHEMATICAL ASSOCIATION (IMA) CODE. 86. ALL SCIENTIFIC EQUIPMENT IS TO BE INSTALLED IN ACCORDANCE WITH THE INTERNATIONAL SCIENTIFIC ASSOCIATION (ISA) CODE. 87. ALL MEDICAL EQUIPMENT IS TO BE INSTALLED IN ACCORDANCE WITH THE INTERNATIONAL MEDICAL ASSOCIATION (IMA) CODE. 88. ALL VETERINARY EQUIPMENT IS TO BE INSTALLED IN ACCORDANCE WITH THE INTERNATIONAL VETERINARY ASSOCIATION (IVA) CODE. 89. ALL AGRICULTURAL EQUIPMENT IS TO BE INSTALLED IN ACCORDANCE WITH THE INTERNATIONAL AGRICULTURAL ASSOCIATION (IAA) CODE. 90. ALL INDUSTRIAL EQUIPMENT IS TO BE INSTALLED IN ACCORDANCE WITH THE INTERNATIONAL INDUSTRIAL ASSOCIATION (IIA) CODE. 91. ALL CONSTRUCTION EQUIPMENT IS TO BE INSTALLED IN ACCORDANCE WITH THE INTERNATIONAL CONSTRUCTION ASSOCIATION (ICA) CODE. 92. ALL MAINTENANCE EQUIPMENT IS TO BE INSTALLED IN ACCORDANCE WITH THE INTERNATIONAL MAINTENANCE ASSOCIATION (IMA) CODE. 93. ALL REPAIR EQUIPMENT IS TO BE INSTALLED IN ACCORDANCE WITH THE INTERNATIONAL REPAIR ASSOCIATION (IRA) CODE. 94. ALL REPLACEMENT EQUIPMENT IS TO BE INSTALLED IN ACCORDANCE WITH THE INTERNATIONAL REPLACEMENT ASSOCIATION (IRA) CODE. 95. ALL UPGRADE EQUIPMENT IS TO BE INSTALLED IN ACCORDANCE WITH THE INTERNATIONAL UPGRADE ASSOCIATION (IUA) CODE. 96. ALL MODERNIZATION EQUIPMENT IS TO BE INSTALLED IN ACCORDANCE WITH THE INTERNATIONAL MODERNIZATION ASSOCIATION (IMA) CODE. 97. ALL RENOVATION EQUIPMENT IS TO BE INSTALLED IN ACCORDANCE WITH THE INTERNATIONAL RENOVATION ASSOCIATION (IRA) CODE. 98. ALL RESTORATION EQUIPMENT IS TO BE INSTALLED IN ACCORDANCE WITH THE INTERNATIONAL RESTORATION ASSOCIATION (IRA) CODE. 99. ALL PRESERVATION EQUIPMENT IS TO BE INSTALLED IN ACCORDANCE WITH THE INTERNATIONAL PRESERVATION ASSOCIATION (IPA) CODE. 100. ALL PROTECTION EQUIPMENT IS TO BE INSTALLED IN ACCORDANCE WITH THE INTERNATIONAL PROTECTION ASSOCIATION (IPA) CODE.	1ST FLOOR PLAN LEASING PLAN - SPACE 2 88-05 76TH AVENUE RIDGEWOOD, NY 11305	DRAWN: IF DESIGN: IF CHECK: IF	SCALE: 3/32" = 1'-0" ISSUE DATE: 08-05-25 REVISED: SHEET 1 OF 2



EXISTING DUCT  
SHAFT

(E) I.T. ROOM

(E) OFFICE

(E) KITCHENETTE

(E) MEN'S  
RESTROOM

(E) OFFICE

(E) WOMEN'S  
RESTROOM

OFFICE

(E) OFFICE

NOTES:

1. ALL WORK SHALL BE IN ACCORDANCE WITH THE LATEST EDITIONS OF THE NATIONAL FIRE PROTECTION ASSOCIATION (NFPA) CODES AND STANDARDS, AND THE LATEST EDITIONS OF THE INTERNATIONAL BUILDING CODE (IBC) AND THE INTERNATIONAL MECHANICAL AND ELECTRICAL CODE (IMEC).  
2. ALL WORK SHALL BE IN ACCORDANCE WITH THE LATEST EDITIONS OF THE NATIONAL FIRE PROTECTION ASSOCIATION (NFPA) CODES AND STANDARDS, AND THE LATEST EDITIONS OF THE INTERNATIONAL BUILDING CODE (IBC) AND THE INTERNATIONAL MECHANICAL AND ELECTRICAL CODE (IMEC).  
3. ALL WORK SHALL BE IN ACCORDANCE WITH THE LATEST EDITIONS OF THE NATIONAL FIRE PROTECTION ASSOCIATION (NFPA) CODES AND STANDARDS, AND THE LATEST EDITIONS OF THE INTERNATIONAL BUILDING CODE (IBC) AND THE INTERNATIONAL MECHANICAL AND ELECTRICAL CODE (IMEC).  
4. ALL WORK SHALL BE IN ACCORDANCE WITH THE LATEST EDITIONS OF THE NATIONAL FIRE PROTECTION ASSOCIATION (NFPA) CODES AND STANDARDS, AND THE LATEST EDITIONS OF THE INTERNATIONAL BUILDING CODE (IBC) AND THE INTERNATIONAL MECHANICAL AND ELECTRICAL CODE (IMEC).  
5. ALL WORK SHALL BE IN ACCORDANCE WITH THE LATEST EDITIONS OF THE NATIONAL FIRE PROTECTION ASSOCIATION (NFPA) CODES AND STANDARDS, AND THE LATEST EDITIONS OF THE INTERNATIONAL BUILDING CODE (IBC) AND THE INTERNATIONAL MECHANICAL AND ELECTRICAL CODE (IMEC).  
6. ALL WORK SHALL BE IN ACCORDANCE WITH THE LATEST EDITIONS OF THE NATIONAL FIRE PROTECTION ASSOCIATION (NFPA) CODES AND STANDARDS, AND THE LATEST EDITIONS OF THE INTERNATIONAL BUILDING CODE (IBC) AND THE INTERNATIONAL MECHANICAL AND ELECTRICAL CODE (IMEC).  
7. ALL WORK SHALL BE IN ACCORDANCE WITH THE LATEST EDITIONS OF THE NATIONAL FIRE PROTECTION ASSOCIATION (NFPA) CODES AND STANDARDS, AND THE LATEST EDITIONS OF THE INTERNATIONAL BUILDING CODE (IBC) AND THE INTERNATIONAL MECHANICAL AND ELECTRICAL CODE (IMEC).  
8. ALL WORK SHALL BE IN ACCORDANCE WITH THE LATEST EDITIONS OF THE NATIONAL FIRE PROTECTION ASSOCIATION (NFPA) CODES AND STANDARDS, AND THE LATEST EDITIONS OF THE INTERNATIONAL BUILDING CODE (IBC) AND THE INTERNATIONAL MECHANICAL AND ELECTRICAL CODE (IMEC).  
9. ALL WORK SHALL BE IN ACCORDANCE WITH THE LATEST EDITIONS OF THE NATIONAL FIRE PROTECTION ASSOCIATION (NFPA) CODES AND STANDARDS, AND THE LATEST EDITIONS OF THE INTERNATIONAL BUILDING CODE (IBC) AND THE INTERNATIONAL MECHANICAL AND ELECTRICAL CODE (IMEC).  
10. ALL WORK SHALL BE IN ACCORDANCE WITH THE LATEST EDITIONS OF THE NATIONAL FIRE PROTECTION ASSOCIATION (NFPA) CODES AND STANDARDS, AND THE LATEST EDITIONS OF THE INTERNATIONAL BUILDING CODE (IBC) AND THE INTERNATIONAL MECHANICAL AND ELECTRICAL CODE (IMEC).

2ND FLOOR  
LEASING PLAN - SPACE 3  
88-05 76TH AVENUE  
RIDGEWOOD, NY 11305

DRAWN: IF  
DESIGN: IF  
CHECK: IF  
SCALE: 3/32" = 1'-0"  
ISSUE DATE: 08-05-25  
REVIS: IF  
SHEET  
2 OF 2