

Configuration Manual



Table of Contents



Read before you start	3
First Steps	4
Connect to Wi-Fi	8
Setting up device	12
Setting up Modbus	15
Modbus TCP	16
Modbus RTU	17
Setting up LoRaWAN	18
Updating device	21

⚠ Read before you start



1. Download "inBiot Setup" app on your mobile device. You can do it from the links to the stores or by scanning the QR code.

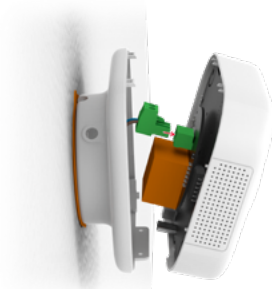


2. Check which model you are going to configure, this is indicated on the bottom of the box.

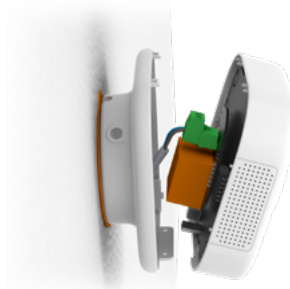


Model:	
<input type="checkbox"/> MICA	
<input type="checkbox"/> MICA Plus	
<input checked="" type="checkbox"/> MICA WELL	
Characteristics	
Power supply:	
<input type="checkbox"/> USB type C cable + 5V USB power adapter.	
<input type="checkbox"/> Fast 110 - 240V AC 50 Hz 0.2A connector.	
<input checked="" type="checkbox"/> Fast 8 - 36V DC 2A 10W connector.	
Connectivity:	
<input type="checkbox"/> Wi-Fi	
<input checked="" type="checkbox"/> LoRaWAN.	
<input type="checkbox"/> Sigfox.	
Communication:	
<input type="checkbox"/> Modbus TCP/IP (wireless) / Modbus RTU.	

3. Make sure the device is plugged into the power source.



Wall (terminal/connector block)

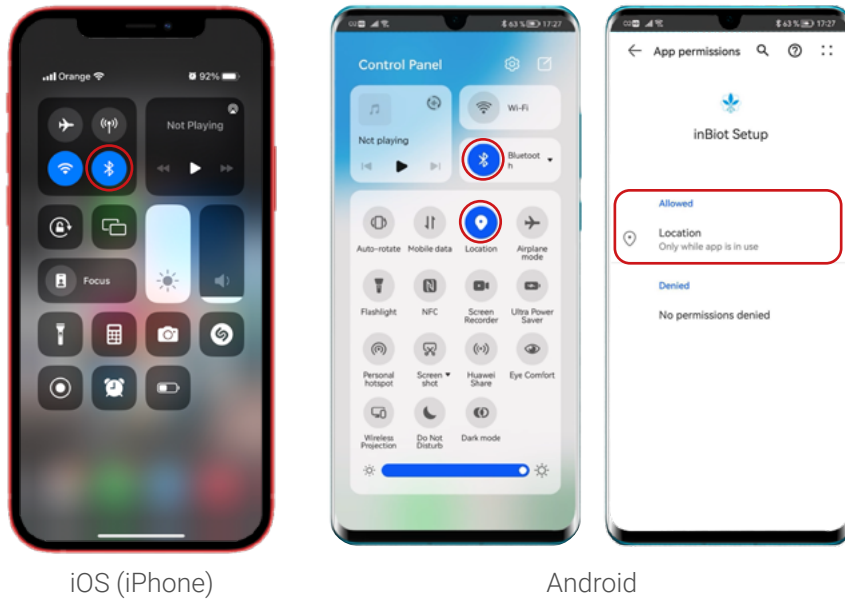


Desktop (USB type C)

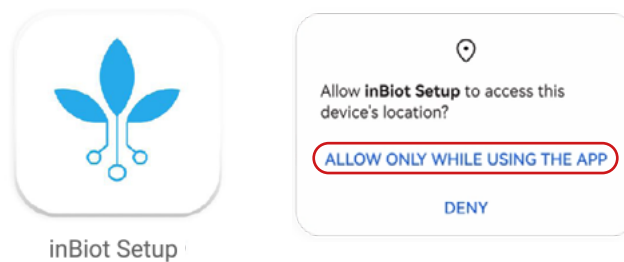
FIRST STEPS

Link your mobile device to your MICA:

1. Turn on bluetooth on your phone. For Android, also turn on location and make sure the app has permissions to use it.



2. Open "inBiot Setup" app. If a message appears requesting permission to use the location, allow it to use it.



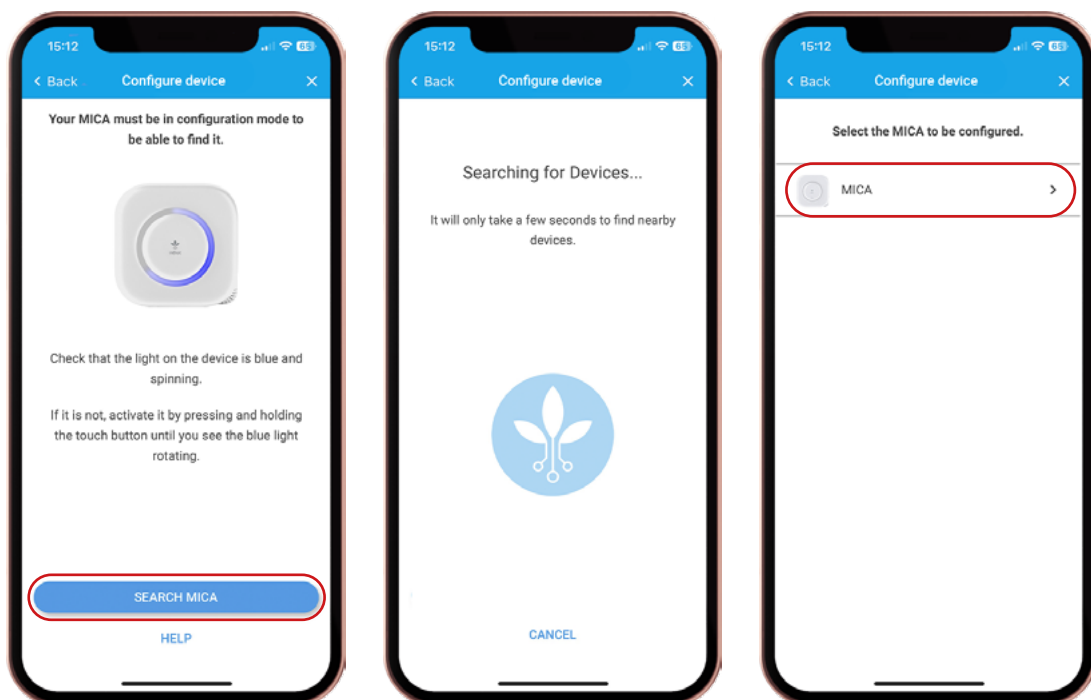
3. To set up a MICA, click [CONFIGURE DEVICE](#). If you want to access My inBiot platform instead, click on [ACCESS MY INBIOT](#).




4. For the next step, the device has to be on access point (blue light and spinning), this happens automatically the first time you power and configure your MICA. If this is not the case, hold the touch button located on the MICA logo until the light turns blue and begins to rotate.

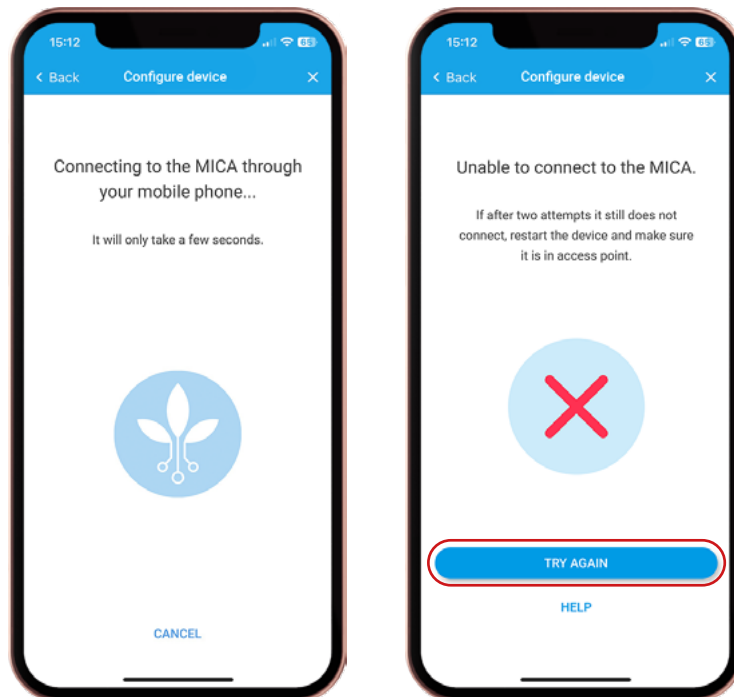



5. Once the device is on the access point, click [SEARCH MICA](#). When your device appears in the list, select it to establish the connection between your phone and the MICA.

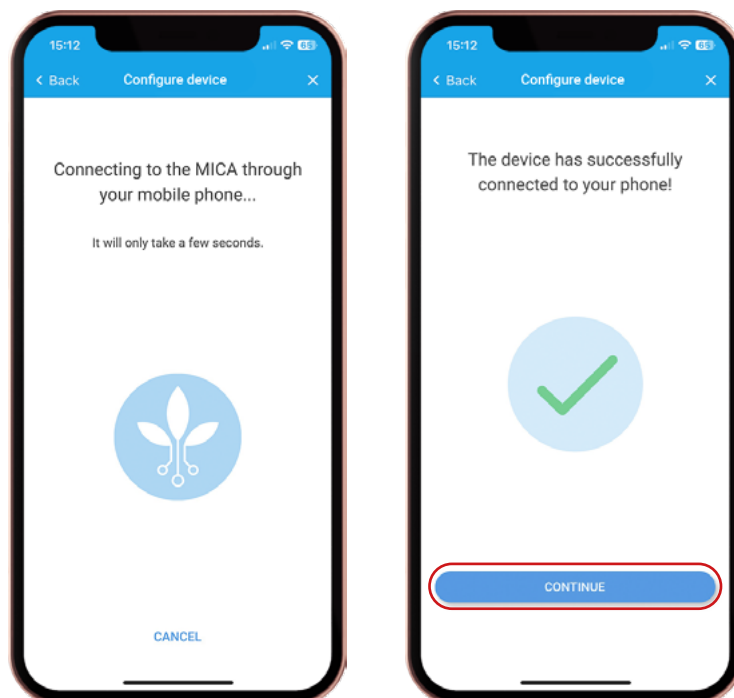


6. If you cannot establish a connection with your phone, make sure that the device is in an access point and click on .

If the error persists, contact support through this [form](#).

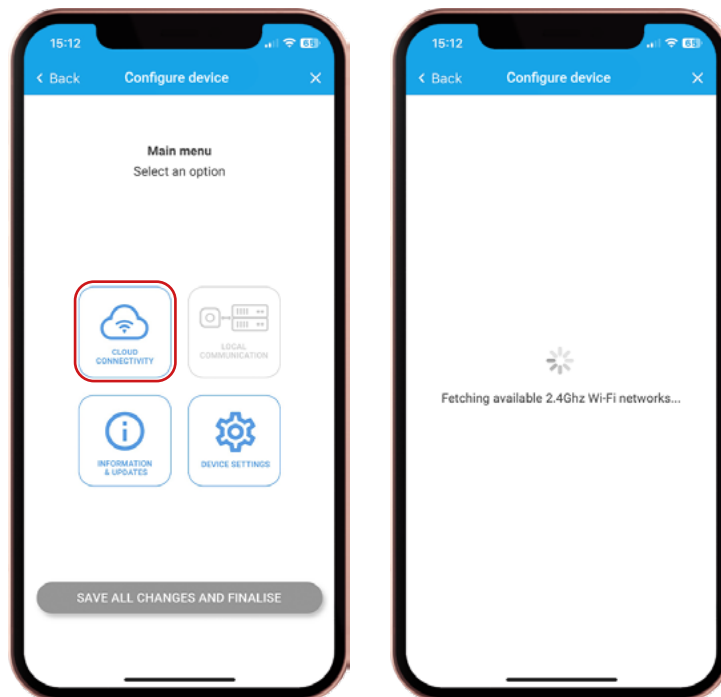


7. If the connection is established correctly, it means that your device is connected to your phone via Bluetooth and you can continue with the configuration by pressing .

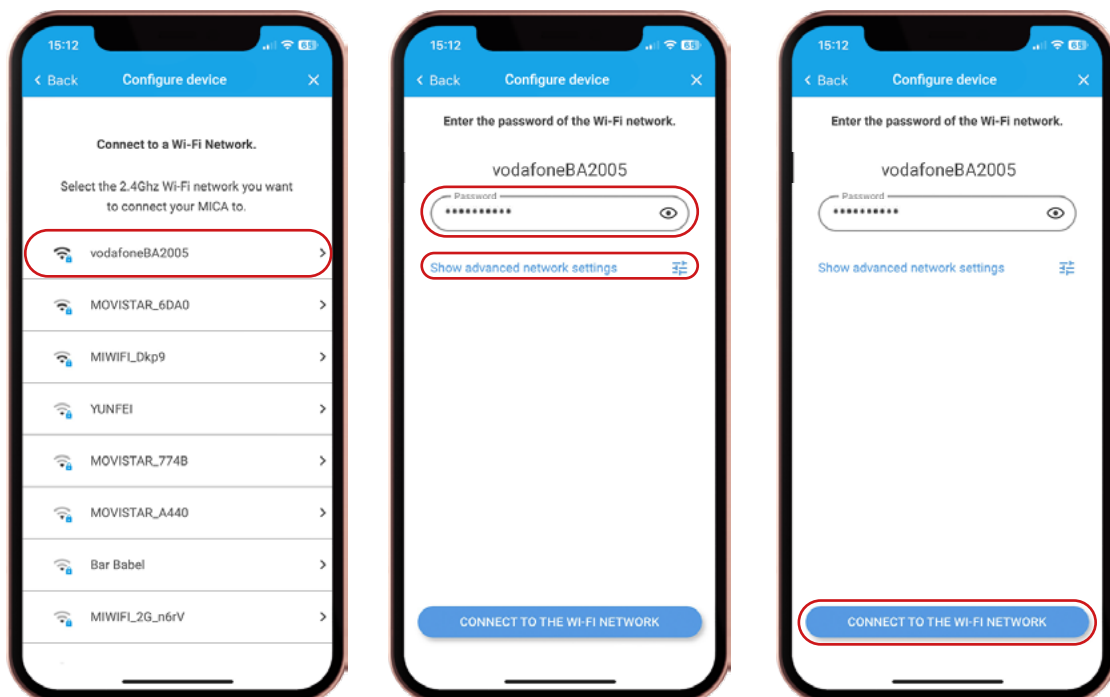


CONNECT TO WI-FI

1. To begin, first, [link your mobile device to your MICA](#).
2. In the main menu, select the “Cloud Connectivity” option.



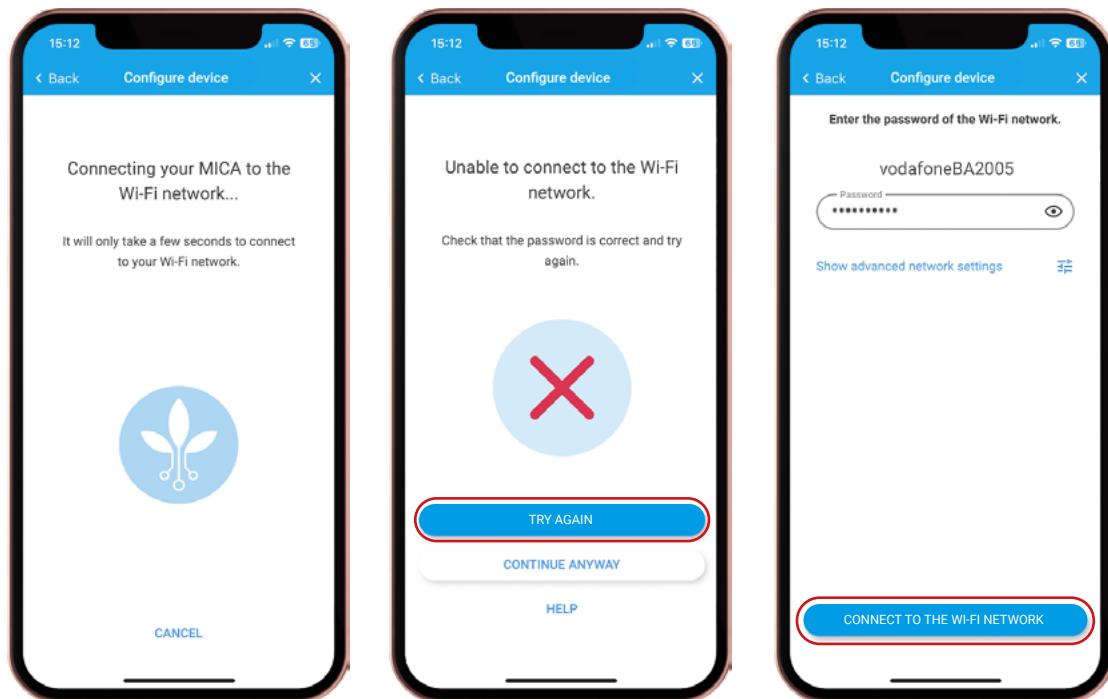
2. Select the Wi-Fi network you want to connect your MICA to, enter the password and, if necessary, modify the advanced settings. Then press the button **CONNECT TO THE WI-FI NETWORK**.



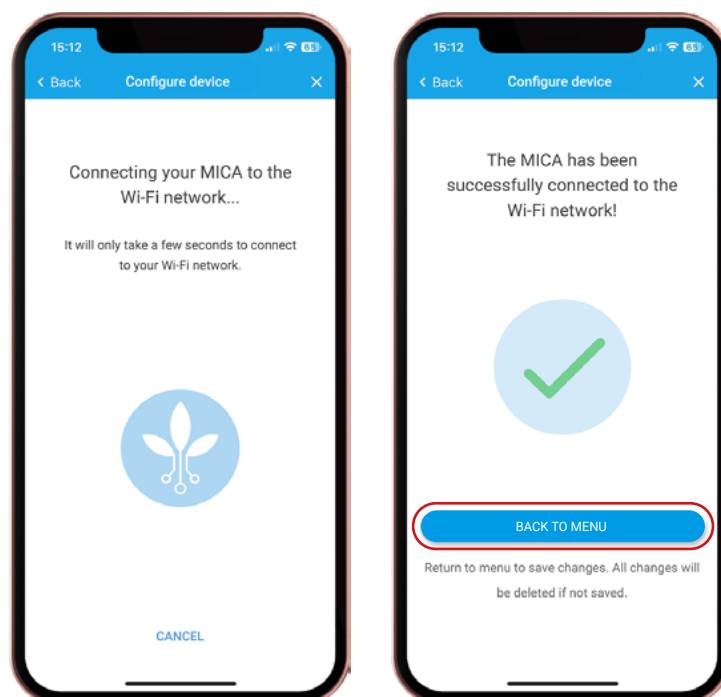
If the network is not listed, make sure it is a 2.4GHz network and is in range of the device. MICA devices cannot connect to 5G networks.

3. If the connection fails, try again making sure the password is correct.

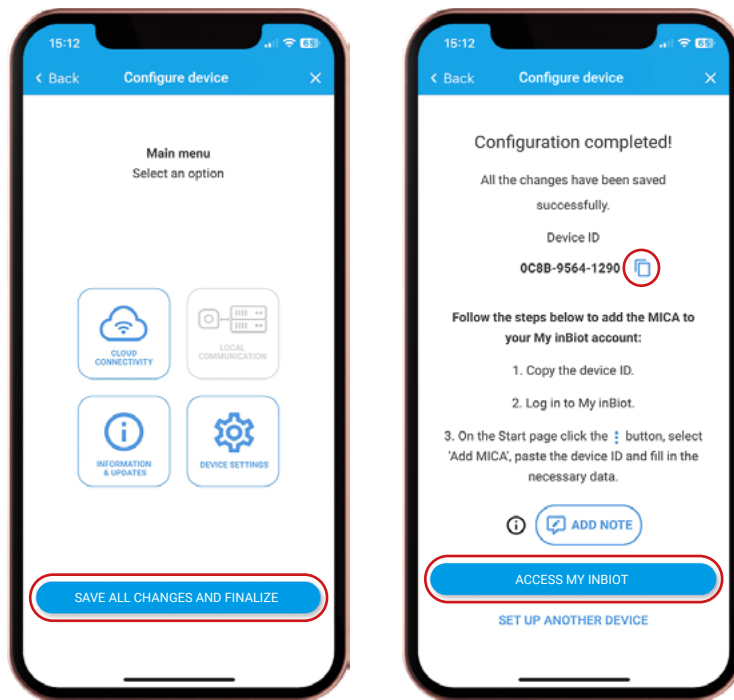
If the error persists, contact support through this [form](#).



If the connection to the Wi-Fi network is established correctly, click [BACK TO MENU](#) to continue with the configuration.



4. To finish, press **SAVE ALL CHANGES AND FINALISE** (Otherwise, all changes will be lost) and copy the Sensor ID to then add it to My inBiot.



If you want to add it immediately, you can access My inBiot from the application by clicking on the button **ACCESS MY INBIOT**. Otherwise, you can set up another MICA or close the app.

SETTING UP DEVICE

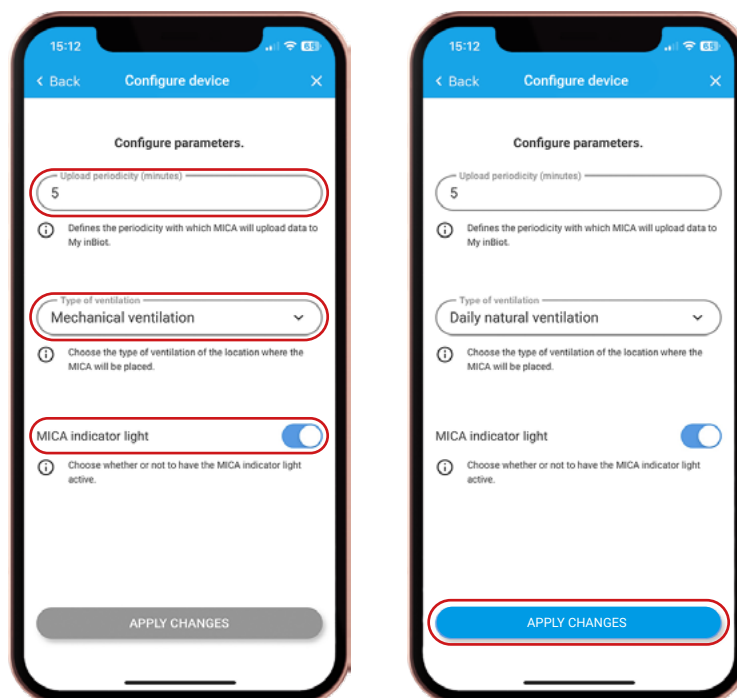
1. To begin, first, [link your mobile device to your MICA](#).
2. In the main menu, select the option “Device Settings”.



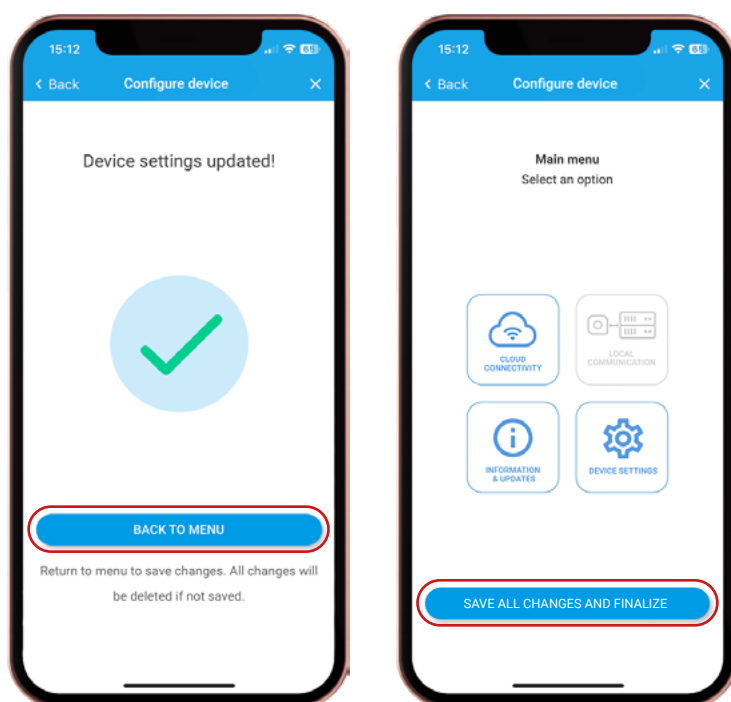
3. Adjust the parameters you want to configure on your MICA and press [APPLY CHANGES](#).

- Frequency of data upload: How often data is sent to the platform.
- Type of ventilation: The type of ventilation that exists in the place where the MICA is located.
- MICA indicator light: Button to turn the MICA LED indicator on or off.

Note: These settings can also be modified later from My inBiot.



4. Return to the Main Menu and press **SAVE ALL CHANGES AND FINALIZE** so that the changes made are saved to the device.



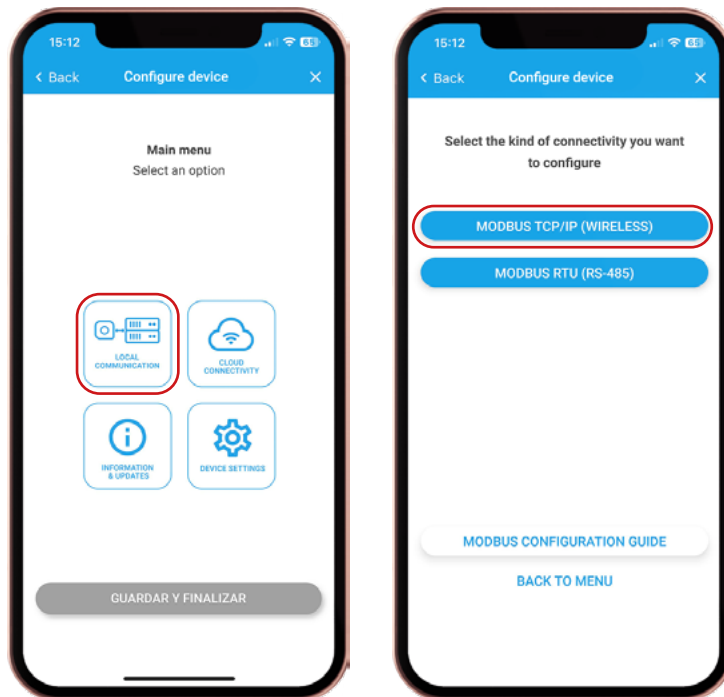
Note: All changes will be lost if not saved from the Main Menu.

SETTING UP MODBUS

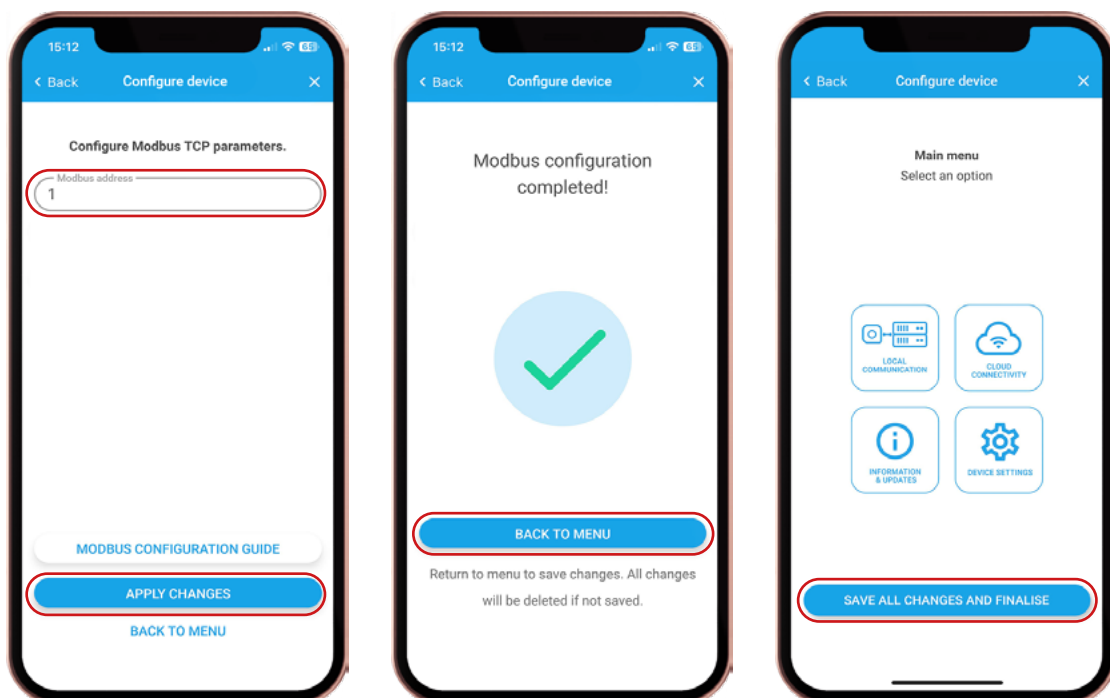
MODBUS TCP

1. To begin, first, [link your mobile device to your MICA](#).

2. In the main menu, select “Local Communication” and click on **MODBUS TCP/IP (WIRELESS)**.



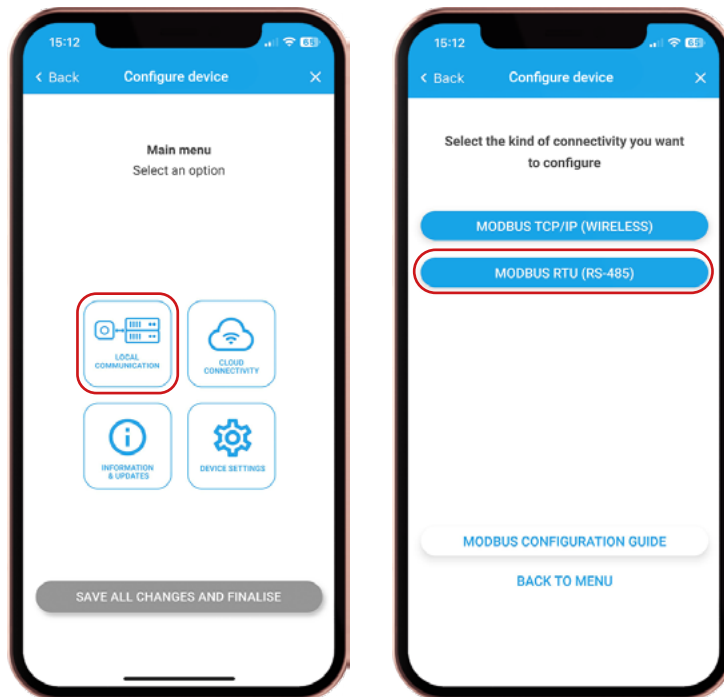
3. Write the correct Modbus Address and press **APPLY CHANGES**. To save the configuration, select **BACK TO MENU** followed by **SAVE ALL CHANGES AND FINALIZE**.



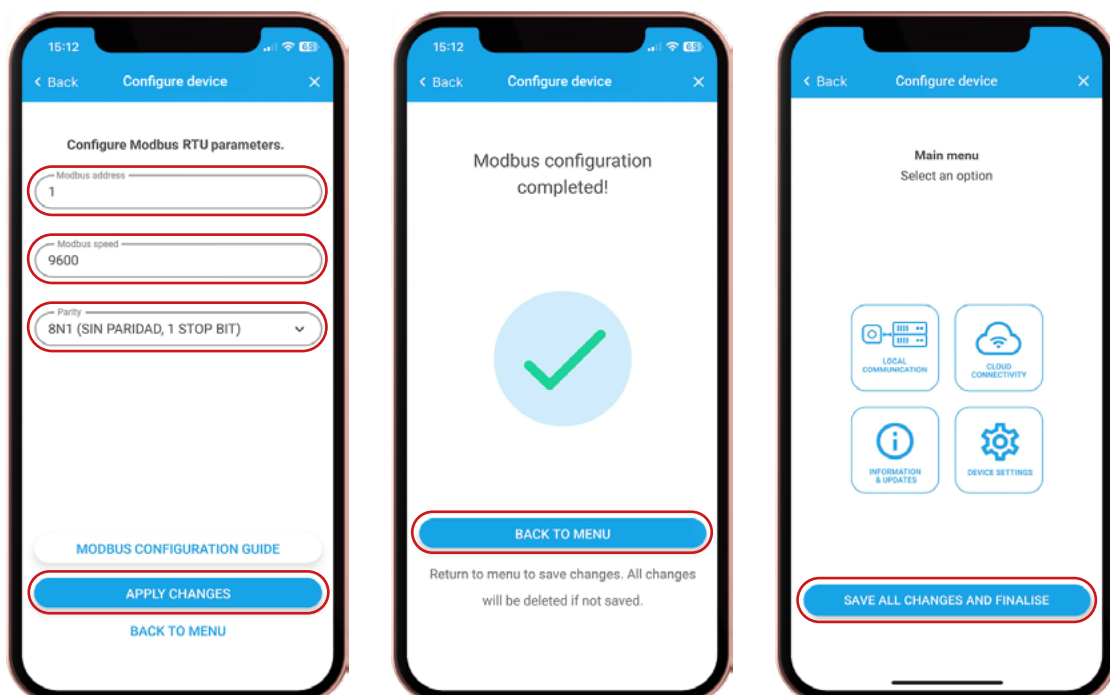
Note: If you do not know the proper parameters for configuration, see the [Modbus Guide](#).

MODBUS RTU

1. To begin, first, [link your mobile device to your MICA](#).
2. In the Main Menu, select the “Local Communication” option. If you have a Wi-Fi device, select the option **MODBUS RTU (RS-485)** . If your device is LoRaWAN or Sigfox, that step will not be necessary.



3. Write the Modbus Address and Speed, select the correct Parity and press **APPLY CHANGES** . To save the settings, select **BACK TO MENU** followed by **SAVE ALL CHANGES AND FINALIZE** .



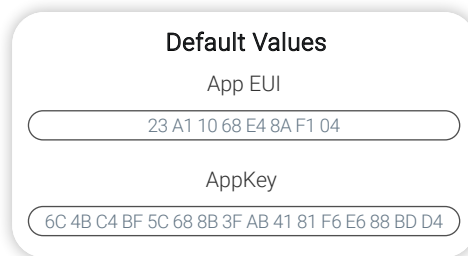
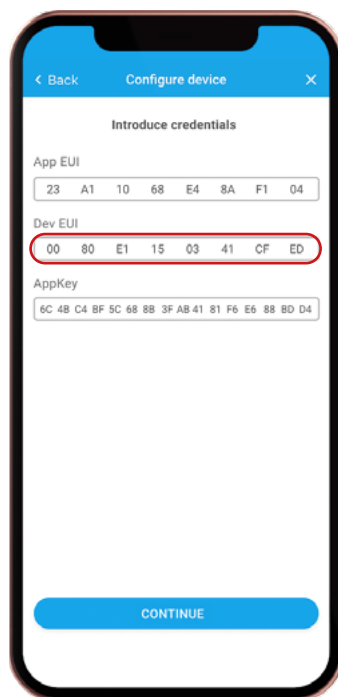
Note: If you do not know the proper parameters for configuration, see the [Modbus Guide](#).

SETTING UP LORAWAN

1. To begin, first, [link your mobile device to your MICA](#).
2. In the main menu, select the option “Cloud Connectivity”.



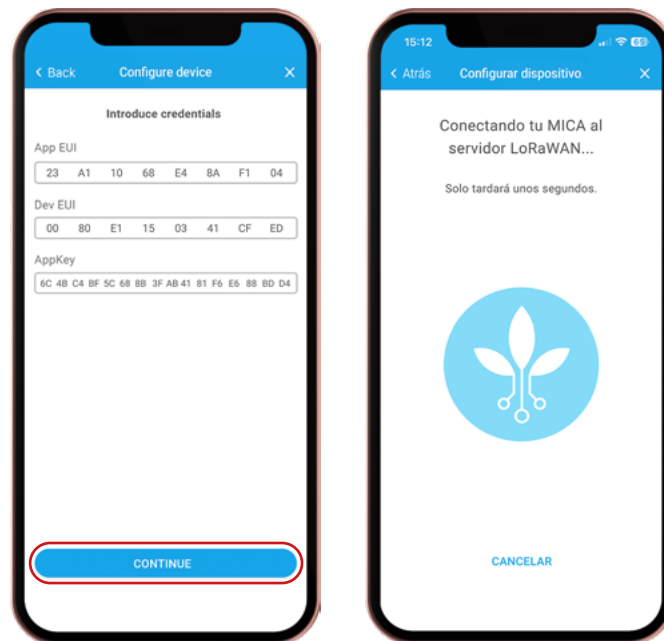
3. Locate the “Device EUI” field and write down this value carefully (this is crucial for device configuration on the LoRaWAN server). On the same screen, you will find the “App EUI” and “AppKey” fields with default values. You can modify these values if you wish, as long as they match those configured on your LoRaWAN server.



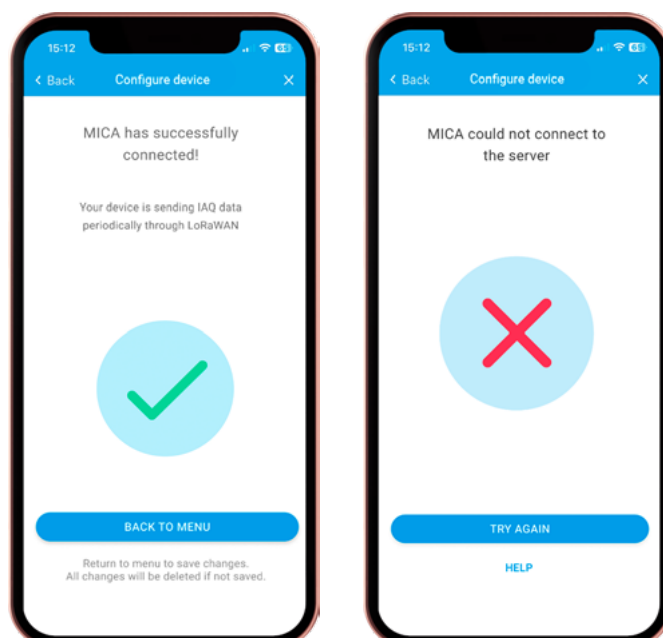
4. Access your LoRaWAN server and start the registration process for a new end device. In the “Dev EUI” field, enter the values you obtained in step 2 of the guide. In the “App EUI” and “AppKey” fields, enter the values that you configured or found by default in the settings app (make sure they match exactly those on the device).

5. Save the device configuration to your LoRaWAN server.

6. Once the device is registered, press **CONTINUE** and verify the correct connection from the device to the server.



7. If the MICA device has sufficient coverage and the configuration of the credentials is correct, the LED will flash green three times indicating the successful connection to the server. Otherwise, the flashing will be red and you will have to review the configured credentials or the network coverage range.



Note: For more detailed instructions, download the [LoRaWAN Configuration Manual](#).

UPDATING DEVICE

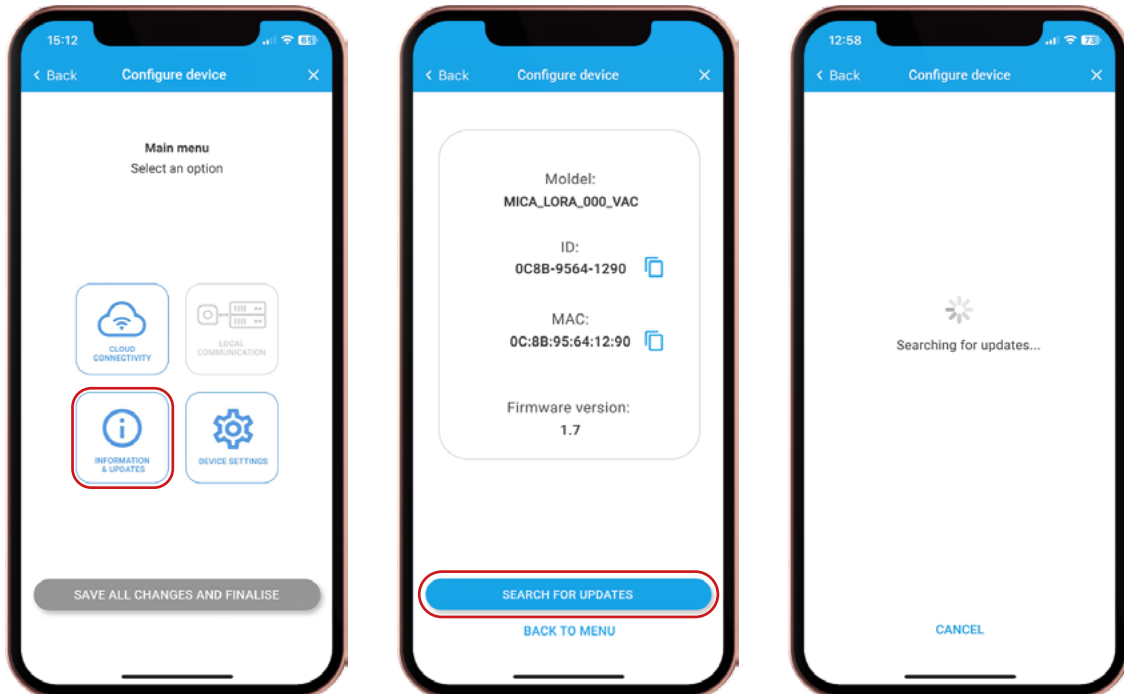
FOR LORAWAN & SIGFOX

FOR LORAWAN & SIGFOX DEVICES ONLY

1. To begin, first, [link your mobile device to your MICA](#).

2. In the main menu, go to "Information and Updates" and then tap

SEARCH UPDATES



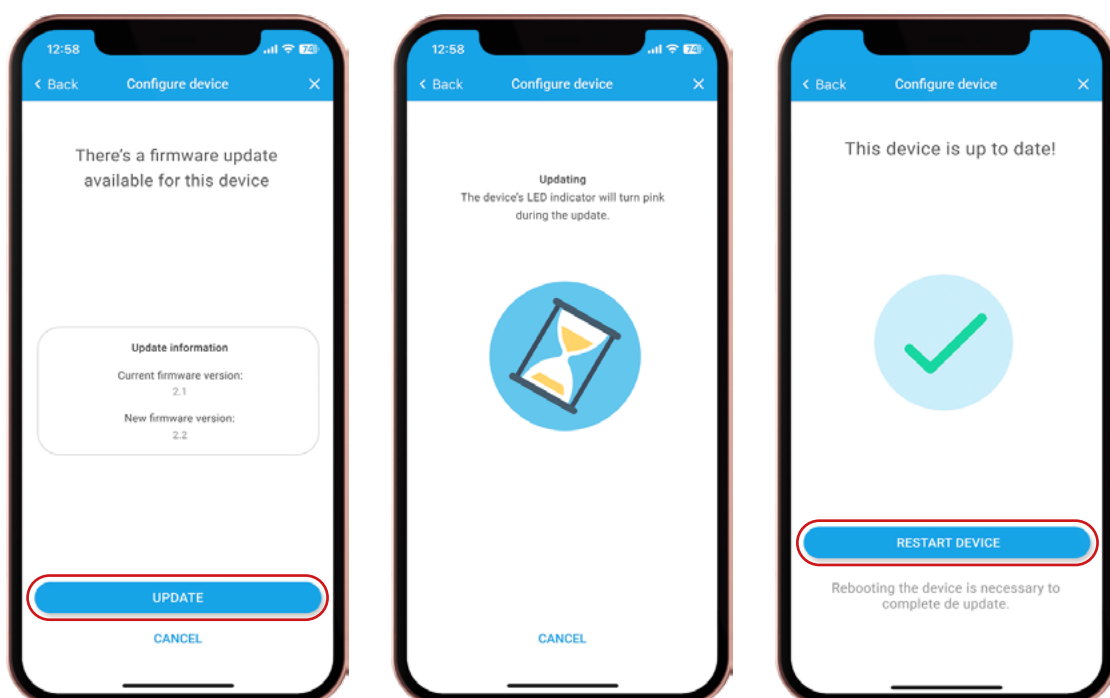
3. If the app finds a newer version of firmware available for the device, it will give you the option to install it. To do this, press

UPDATE

Once the update is complete, select

RESTART DEVICE

to finish and return to the menu.





inBiot
Sense your building

www.inbiot.es

Copyright © inBiot Monitoring SL