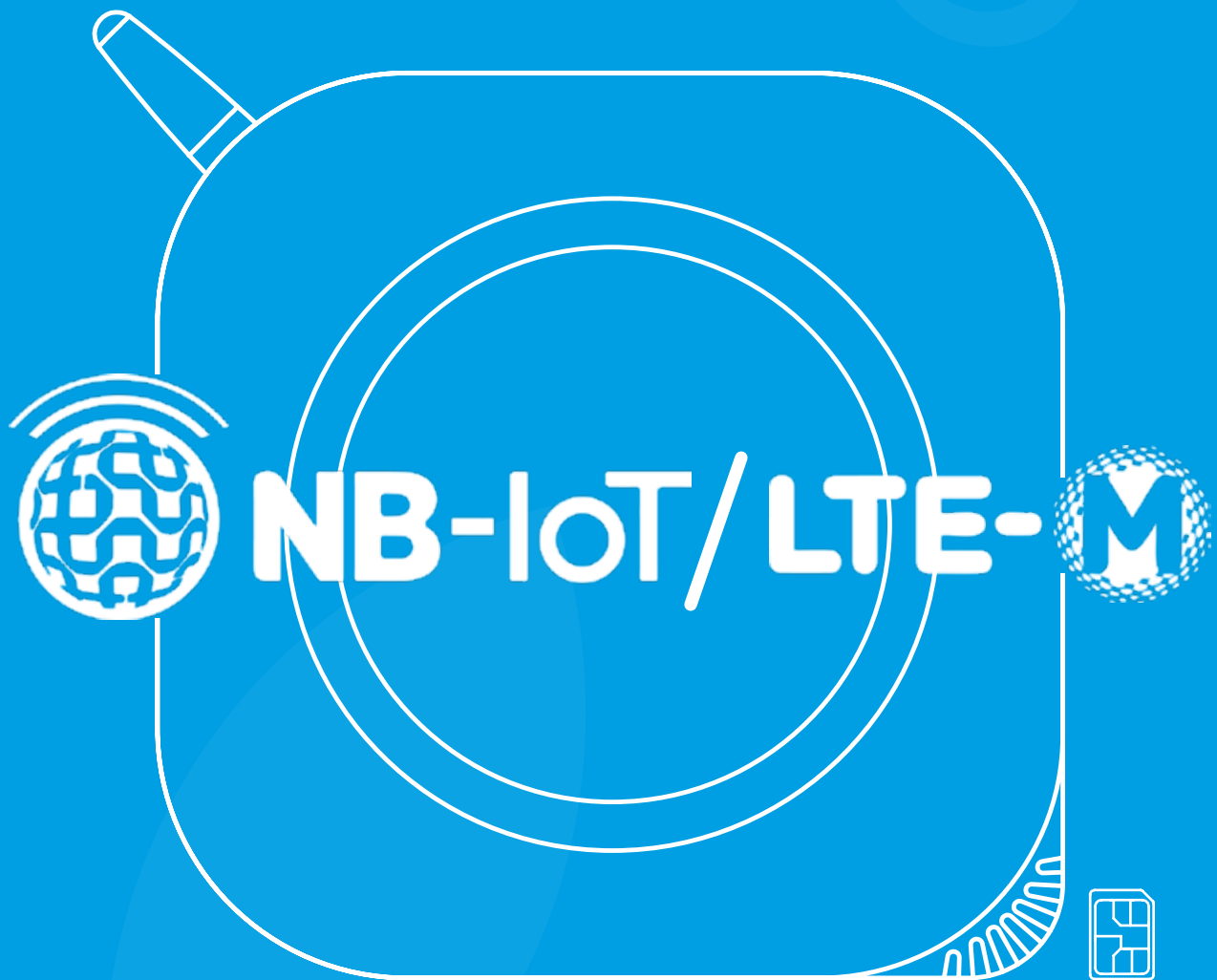


Cellular IoT SIM Card Guide



SIM Card Compatibility Specifications

To ensure proper device operation, a **nanoSIM** (4FF format) is required.

Regarding network compatibility, the SIM card must support **NB-IoT (LTE Cat-NB1/NB2) or LTE-M (LTE Cat-M1)** technologies. While some SIM cards may not explicitly specify these categories, they must allow connectivity on **LTE networks that support NB-IoT or LTE-M**, depending on the operator's coverage and availability.

It is recommended to check with the mobile service provider for compatibility with these technologies before use.

Regarding the consumption, it depends on the device data upload periodicity. But for example, for a device sending data every 10 minutes, the estimated monthly consumption will be 15MB.

Inserting the SIM Card

Before you begin

For this process you will need the following tools:



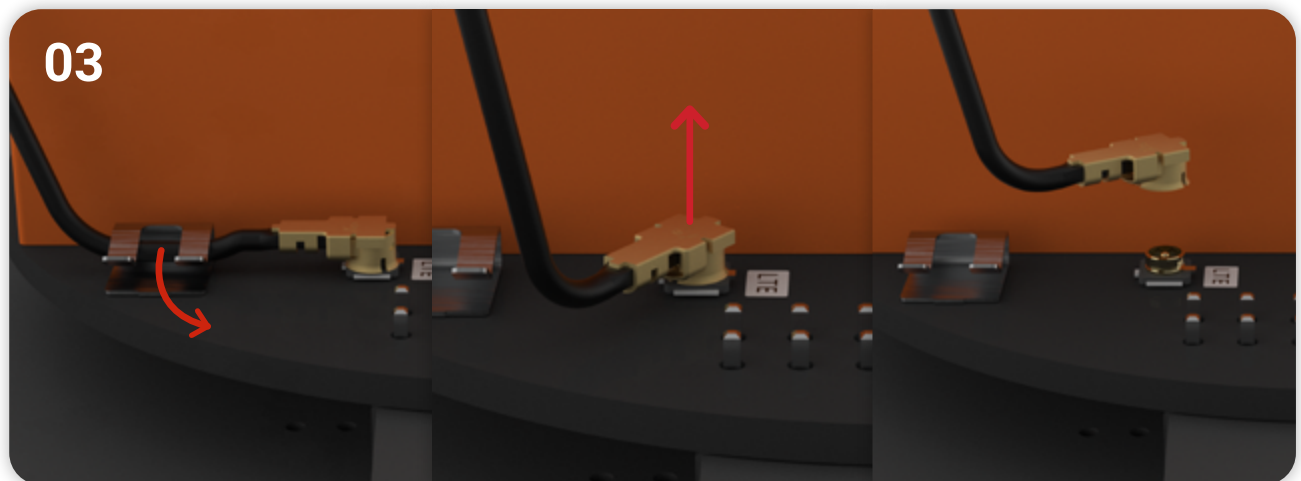
Phillips screwdriver (small)

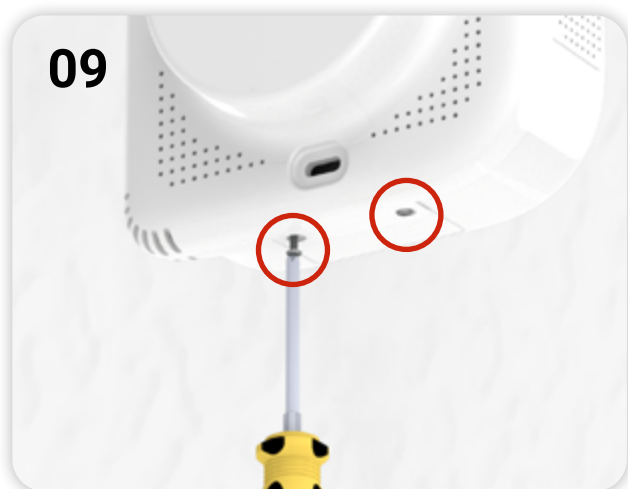
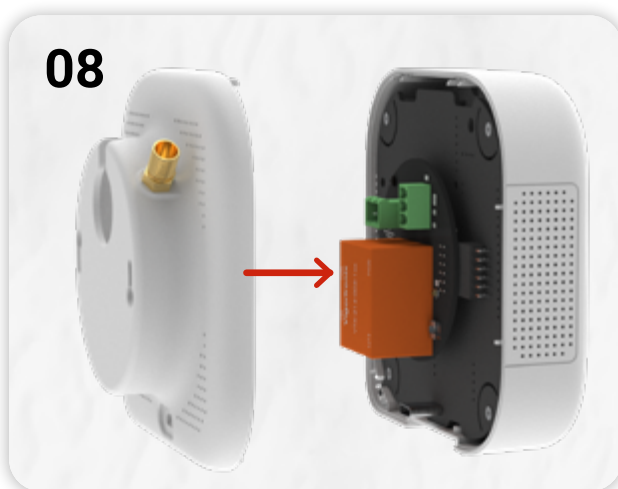
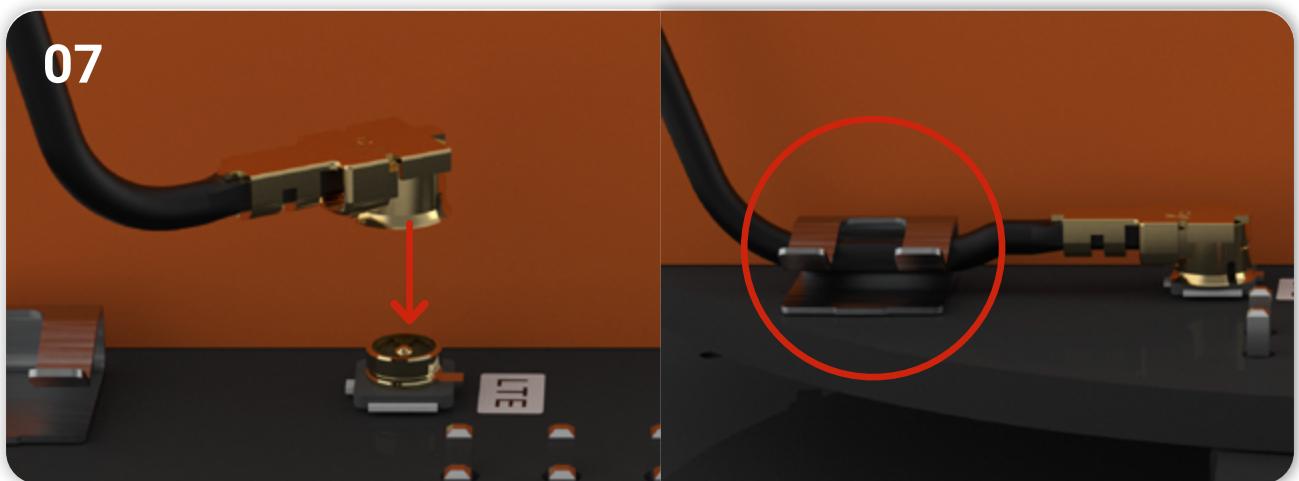
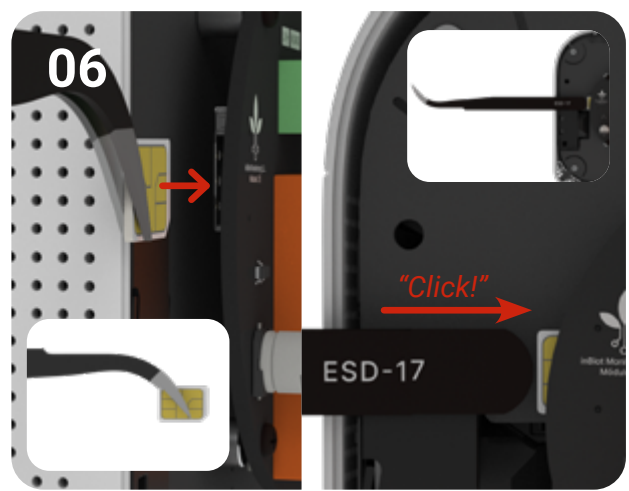
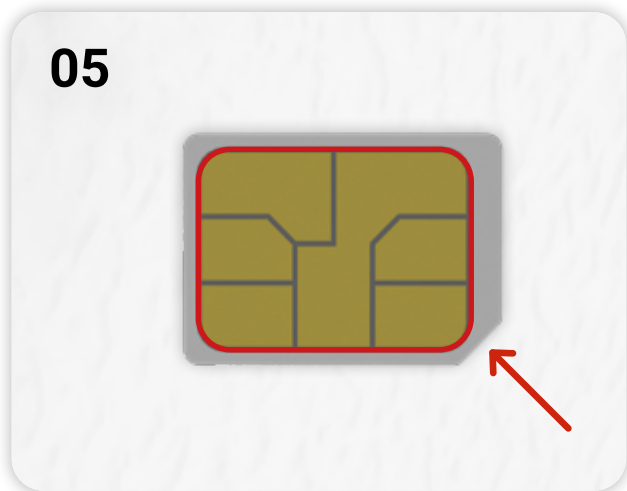


Tweezers

Steps without removing the module

Note: For a better understanding of each step, please refer to the [video](#).





Description of the steps.

1. Remove the 2 screws from the bottom of the device:

- Use an appropriate screwdriver to remove the screws located at the bottom of the device.

2. Remove the back cover of the casing:

- Carefully detach the back cover.
- **Caution:** Do not pull too hard as the antenna is connected between the back cover and the PCB (Printed Circuit Board).

3. Disconnect the antenna:

- Gently unhook and disconnect the antenna cable to fully remove the back cover.

4. Locate the SIM card slot:

- The SIM card slot is located **below the inBiot logo** on the round PCB, specifically on the left side.

5. Orient the SIM card:

- **Metal contacts (gold side)** facing up (towards your body).
- **Cut corner** pointing down to the right.

6. Insert the SIM card:

- Use **tweezers** to insert the SIM card in the desired orientation.
- Using the opposite side of the tweezers, gently push the SIM card in until you hear a "**CLICK**", confirming that it is properly secured.

Remove the SIM card (optional):

- To remove the SIM card, push it in with the tweezers so that the card pops out slightly.
- Once it pops out, carefully grab it with the tweezers and pull it out.

7. Reconnect the antenna:

- Connect the **round antenna connector** back to its position.
- Hook the **antenna cable into the metallic latch** located at the bottom of the connector to secure it.
- This ensures that the antenna connector stays in place and does not disconnect accidentally.

8. Place the back cover:

- Align and fit the back cover back into its position.

9. Reattach the 2 screws at the bottom:

- Insert and tighten the 2 screws to close the casing.

6. Reconnect the module:

- Align the module 12 pin connector with the one on the main PCB and carefully push to the **right** to connect it.
- Insert the 2 screws and use phillips screwdriver to tighten them in place.

7. Reconnect the antenna:

- Connect the **round antenna connector** back to its position.
- Hook the **antenna cable into the metallic latch** located at the bottom of the connector to secure it (this ensures that the antenna connector stays in place and does not disconnect accidentally).

8. Place the back cover:

- Align and fit the back cover into its correct position.

9. Reattach the 2 screws at the bottom:

- Insert and tighten the 2 screws to close the casing.

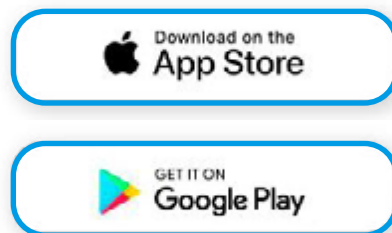
SIM Card APN configuration

Once the SIM card has been correctly installed in the device, it is necessary to configure the **APN (Access Point Name)** to allow connection to the corresponding operator's network. To do this, follow these steps from the settings application:

- **Access the device's setup app** and navigate to the connectivity selection screen.
- Ensure that the connection method is set to **NB-IoT / LTE-M** for cloud services.
- In the 'Current Settings' section, you will see that the APN attribute is either empty or set to a default value.
- Tap the **"Change"** button next to the **APN** field.
- Enter the **APN provided by your network operator** in the corresponding field.
- Tap the **"Confirm"** button then return to the main menu and tap **"Save and Finish."**

Note: If the APN is not configured correctly, the device will not be able to establish a connection to the network. If you experience connection issues, verify the correct details with your SIM provider.

*Download "inBiot Setup" app on your mobile device. You can do it by scanning the QR code or by clicking on the store buttons.



Usage Notes

1. Verify that no electric current is flowing during the installation or maintenance of wall-mounted equipment (for both concealed and non-concealed wall installations).
2. To reduce risks, always entrust the installation and maintenance of the equipment to qualified personnel.
3. For any inquiries, contact the support team through the [form on our support page](#).



inBiot
Sense your building

www.inbiot.es
support@inbiot.es

Copyright © inBiot Monitoring SL