

Ethernet Guide

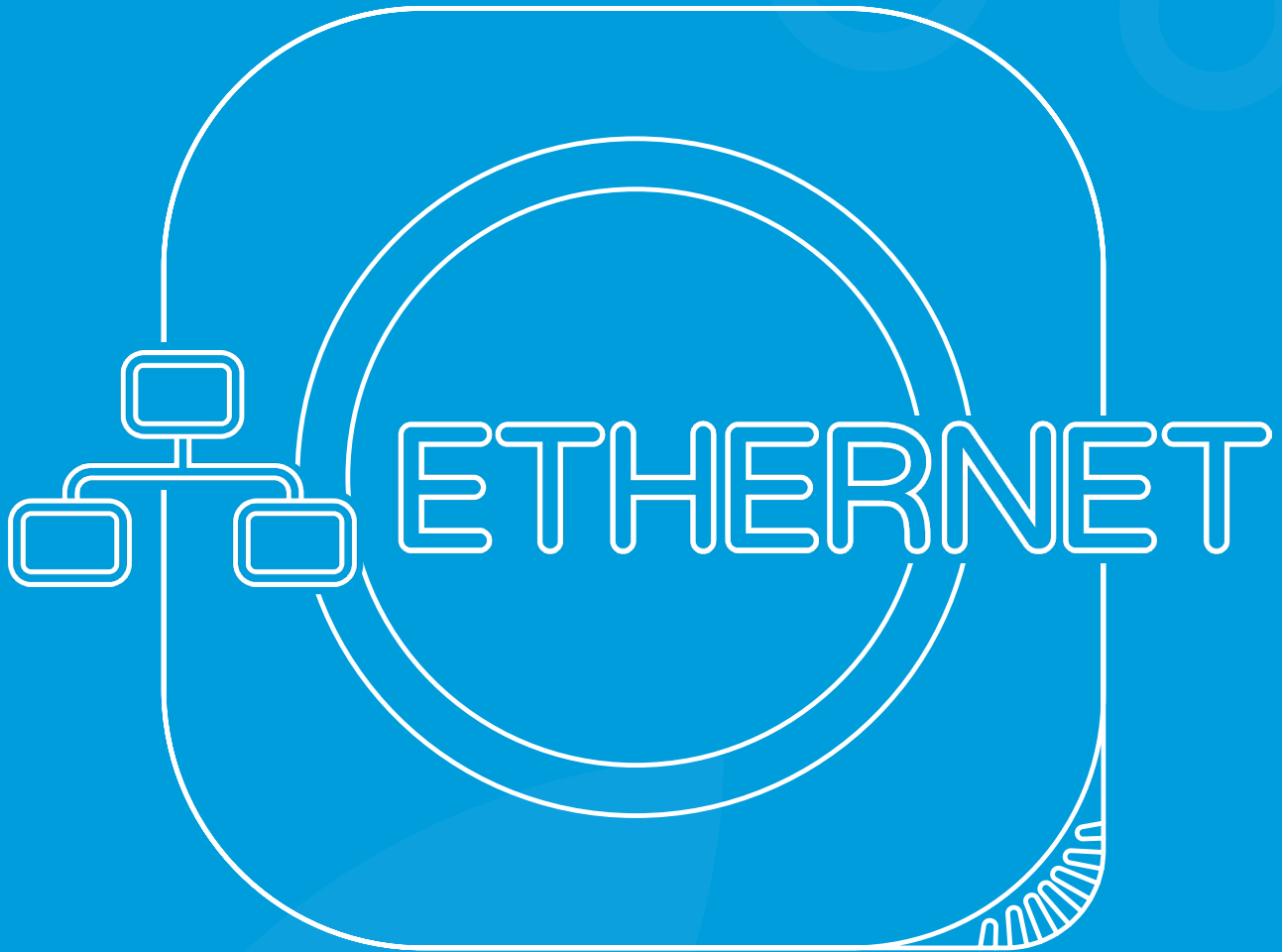


Table of contents



Ethernet Configuration	3
Download App	3
Setting up Ethernet.....	3
Before you begin.....	3
Settings	4
Device Installation.....	6
Parts and pieces	6
Description.....	6
Ethernet (PoE)	7
Steps to follow	7
Description.....	8
Ethermet (110 - 240V AC / 8 - 36V DC).....	9
Steps to follow	9
Description.....	10

Ethernet Configuration



Download App

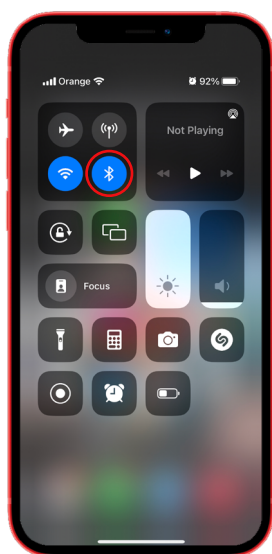
All settings can be configured in the inBiot setup app. You can download this application through the links to the stores or by scanning the following QR code.



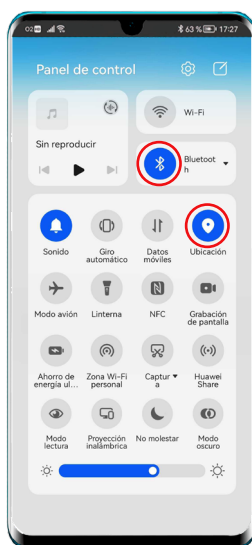
Setting up Ethernet

Before you begin

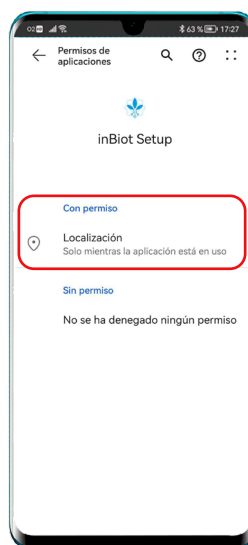
1. Remember to turn on Bluetooth on your phone. For Android, also turn on location and make sure the app has permissions to use it.



iOS (iPhone)



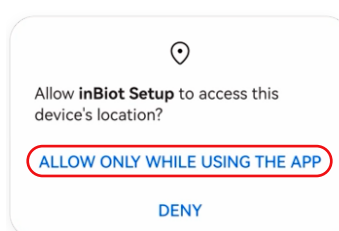
Android



2. Open "inBiot Setup" app. If a message appears requesting permission to use the location, allow the app to use it.

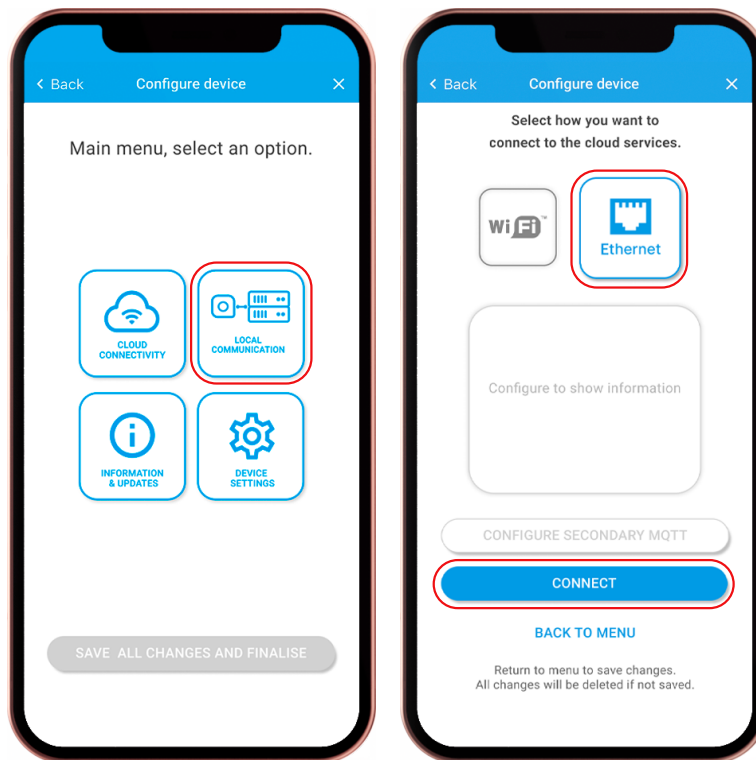


inBiot Setup

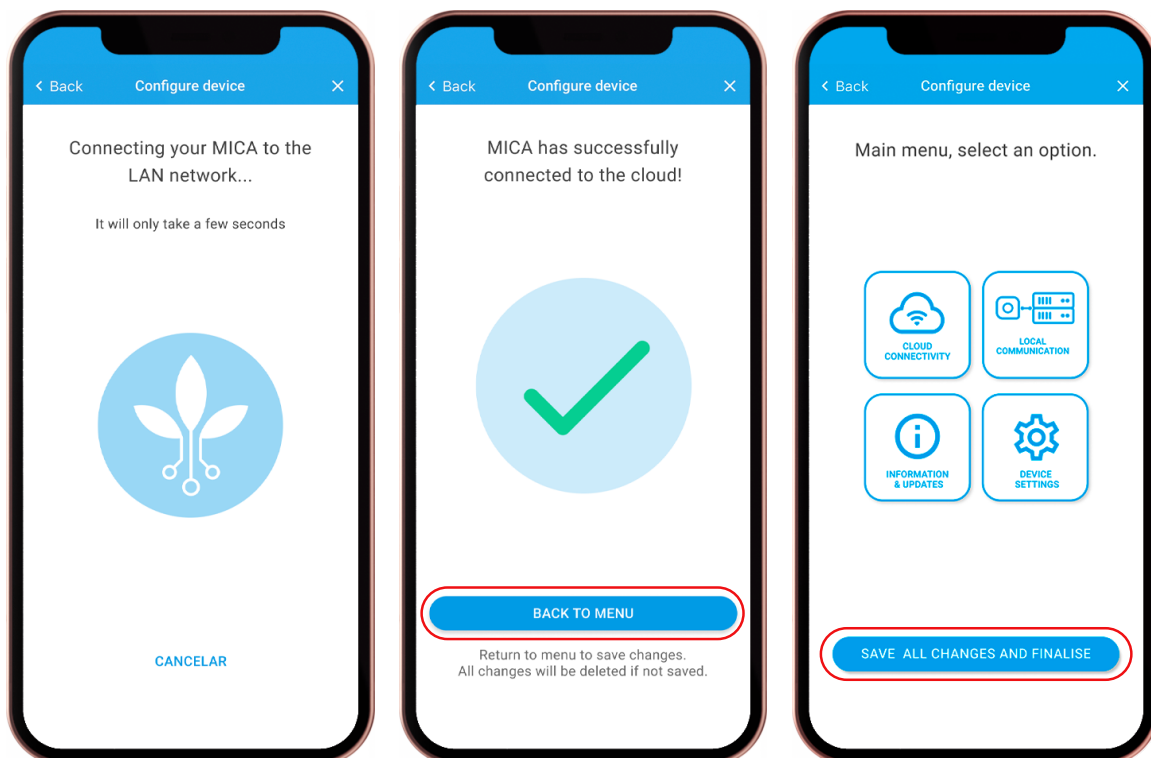


Settings

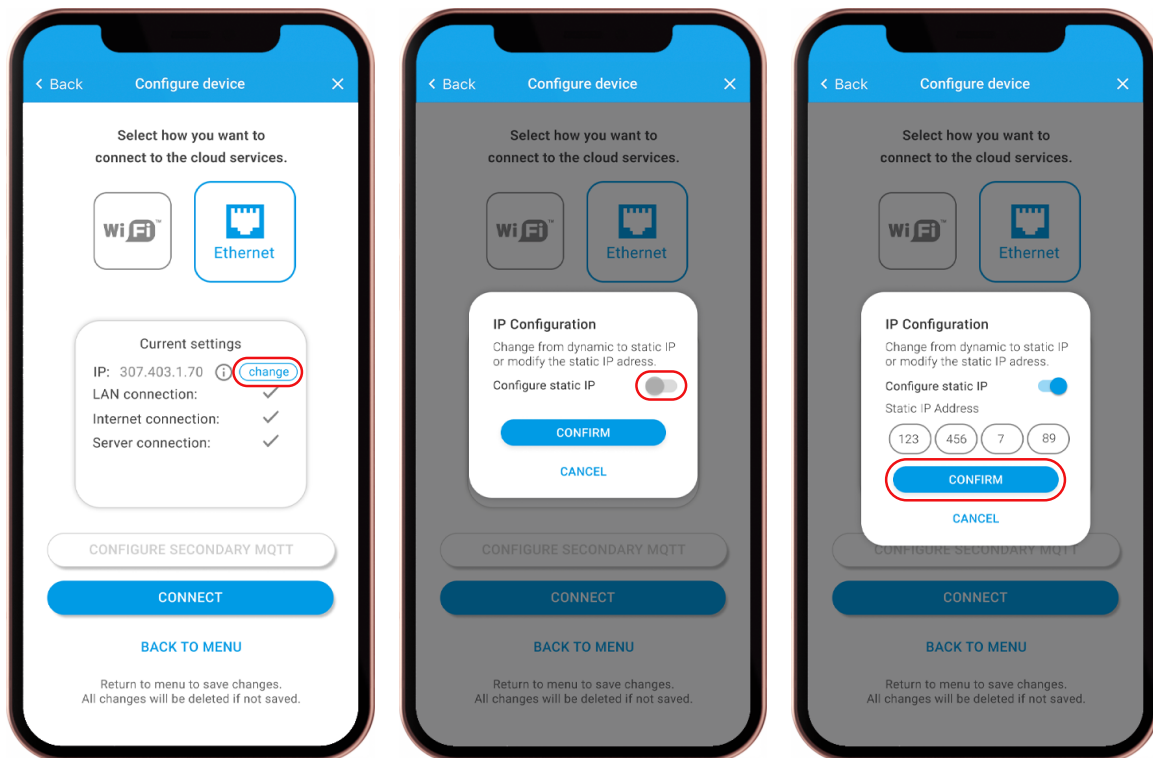
1. On the main menu select LOCAL COMMUNICATION.
2. Then, select the correct installation type, in this case Ethernet and press CONNECT.



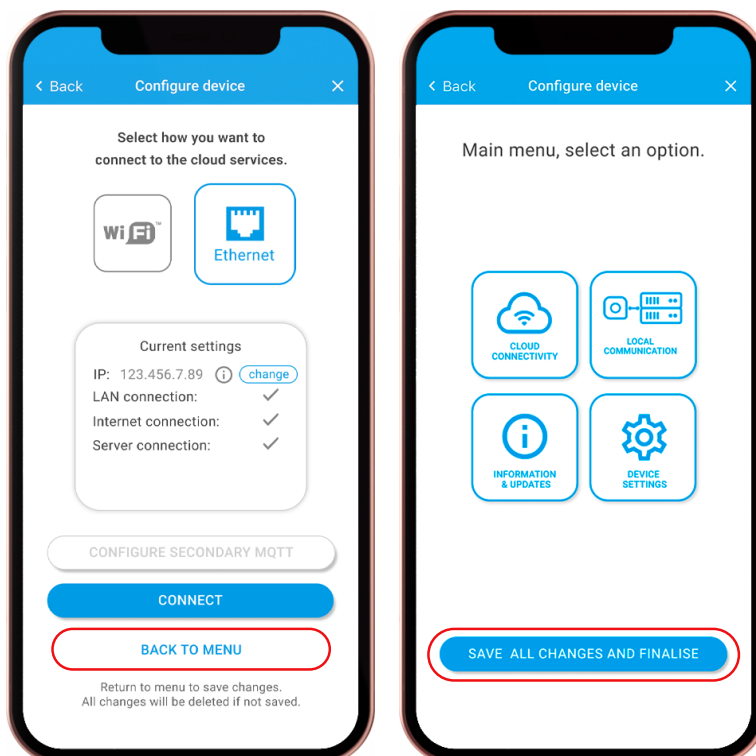
3. Wait while the settings are processed and once the configuration is complete, remember to return to the Main menu and save the changes.



4. If you wish to change the Static IP Address, go back to LOCAL COMMUNICATION on the Main Menu, and press "change" in the Ethernet Settings.
5. Then, switch the Static IP configuraion toggle ON, write the new IP address and press CONFIRM.



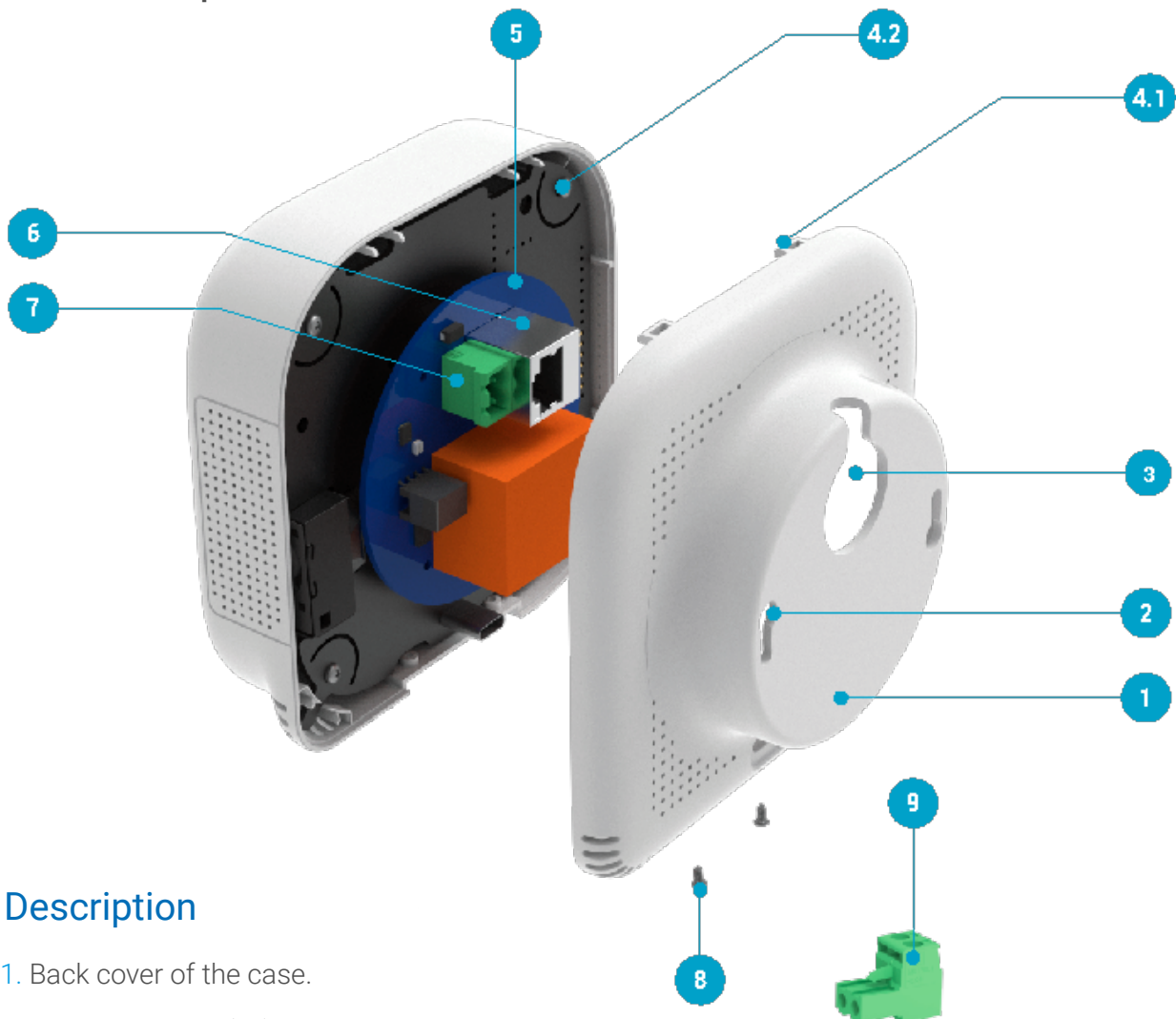
6. To apply the changes to the static IP address, make sure to go back to the main menu and save the changes.



Device Installation



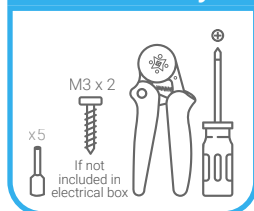
Parts and pieces



Description

1. Back cover of the case.
2. Mounting holes (x2).
3. Cable inlet.
4. 1) Assembly hooks (x2).
2) Assembly guides (x2).
5. Electronic Motherboard (MOBO).
6. Female Ethernet terminal.
7. Female power terminal.
8. Assembly screws (x2).
9. Male power terminal.

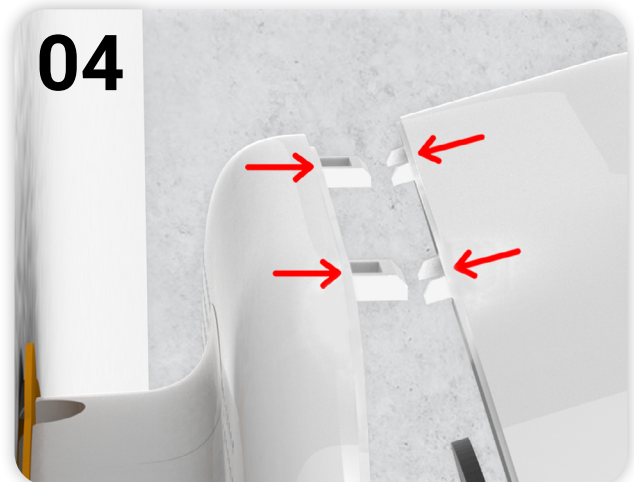
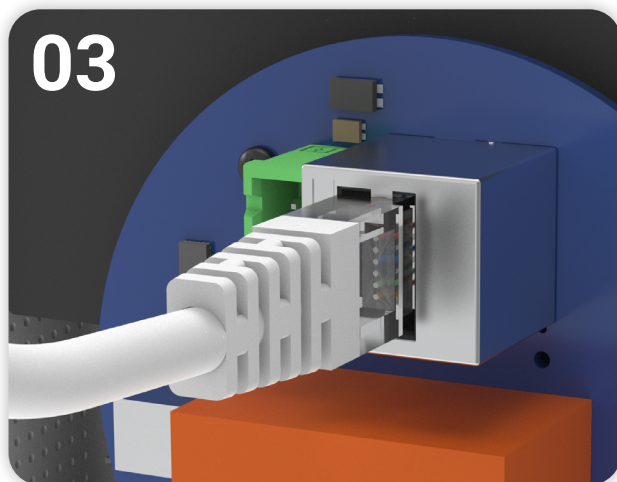
Necessary



Note: The recommended height for installation is 120 - 180cm.

Ethernet (PoE)

Steps to follow

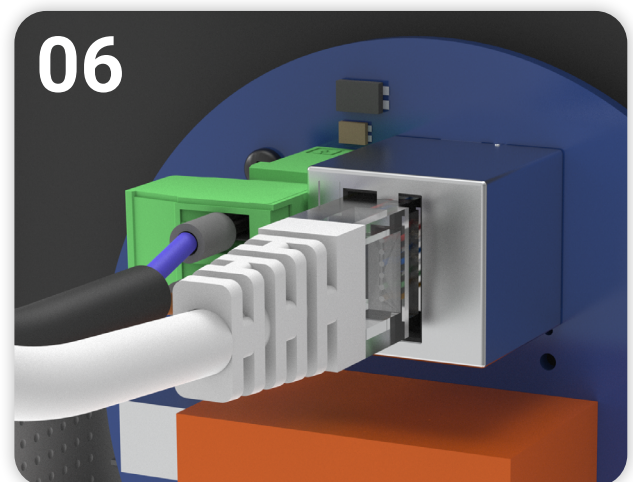
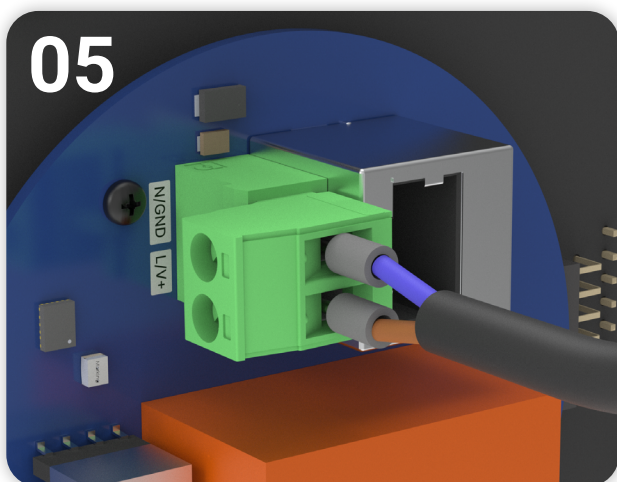
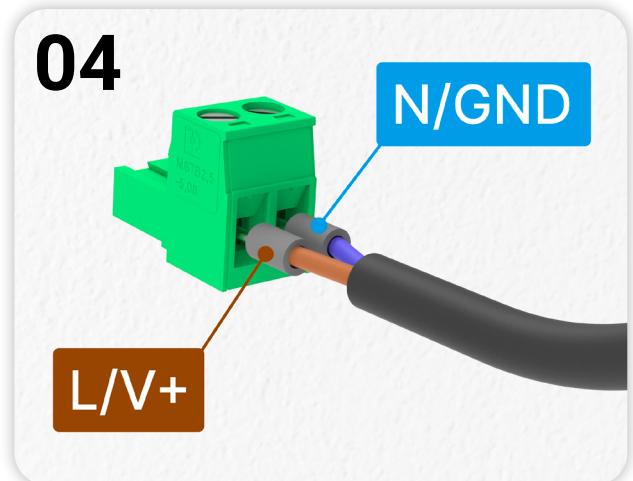


Description

1. To begin, run the power cable (PoE) through the inlet ③ located on the back cover ① of the case.
2. Next, mount the back cover ① to the wall. To do this, insert the screws in the wall through the mounting holes ② and rotate the housing so that it is straight. Then, using a screwdriver tighten the screws to secure it in position.
3. Connect the Ethernet cable to the female Ethernet terminal ⑥ located on the motherboard ⑤.
4. You can now close the MICA: Align the assembly guides ④ with the assembly hooks ④ (this must be done with the housing slightly tilted) and then close the back cover ①.
5. To finish, secure the case with the two lower assembly screws ⑧.

Ethernet (110 - 240V AC / 8 - 36V DC)

Steps to follow





Description

1. To begin, run the power cable (PoE) through the inlet ③ located on the back cover ① of the case.
2. Next, mount the back cover ① to the wall. To do this, insert the screws in the wall through the mounting holes ② and rotate the housing so that it is straight. Then, using a screwdriver tighten the screws to secure it in position.
3. **Before proceeding**, add ferrules to the wires on the power cable.
4. Next, connect the power wires to the male power terminal ⑨ provided. If the power supply is **direct current (8 - 36V DC)**, remember to respect the order of the inputs (**V+ and GND**).
5. Connect the power cable to the female power terminal ⑦ located in the motherboard ⑤.
6. Connect the Ethernet cable to the female Ethernet terminal ⑥ located on the motherboard ⑤.
7. You can now close the MICA: Align the assembly guides ④ with the assembly hooks ④ (this must be done with the housing slightly tilted) and then close the back cover ①.
8. To finish, secure the case with the two lower assembly screws ⑧.



Copyright © inBiot Monitoring SL