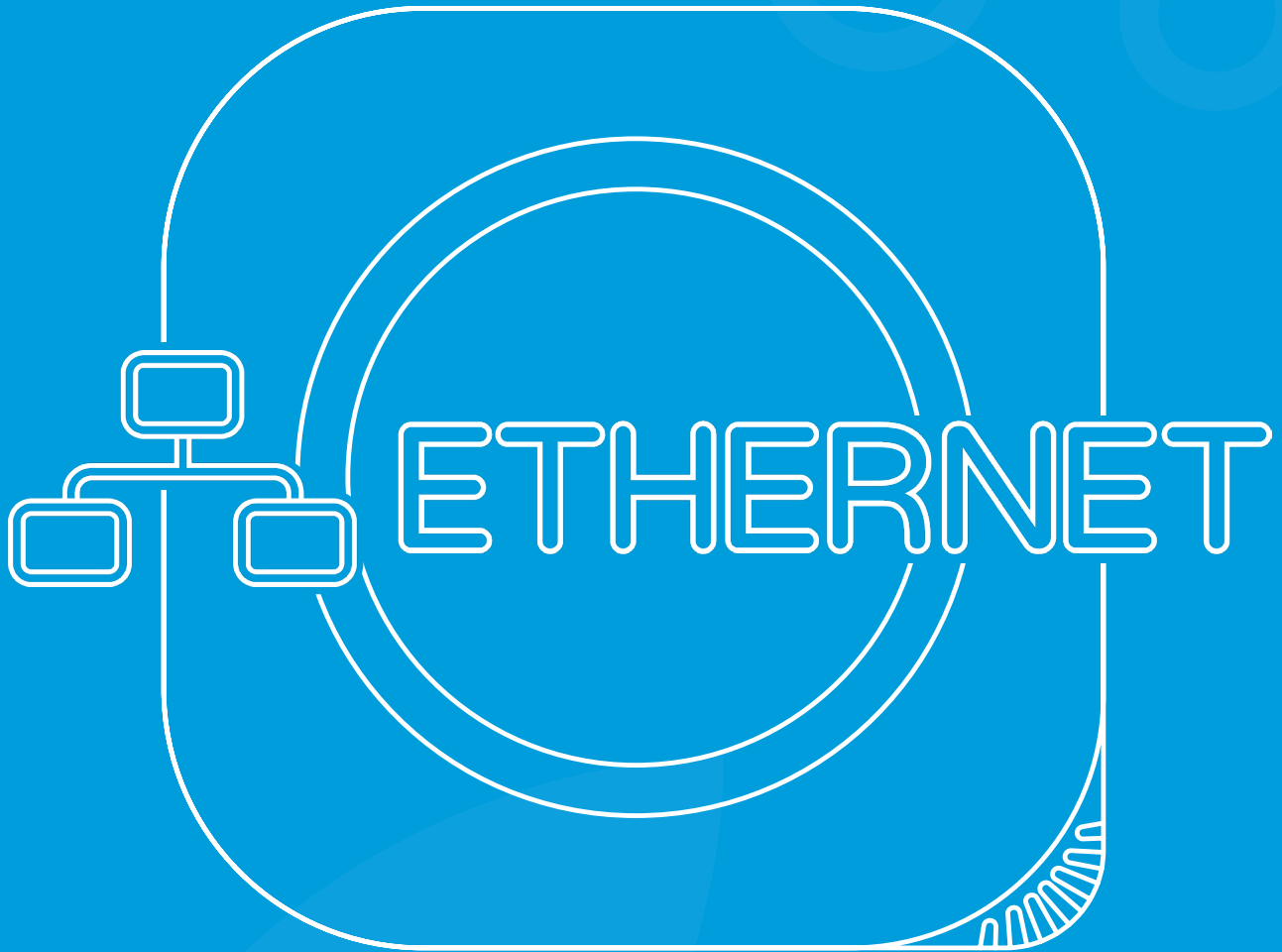


# Ethernet Guide

---



# Table of contents



Ethernet Configuration .....	3
Download App .....	3
Setting up Ethernet.....	3
Before you begin.....	3
Settings .....	4
Device Installation.....	6
Parts and pieces.....	6
Description.....	6
Ethernet (PoE) .....	7
Steps to follow .....	7
Description.....	8
Ethernet (110 - 240V AC / 8 - 36V DC) .....	9
Steps to follow .....	9
Description.....	10

# Ethernet Configuration



## Download App

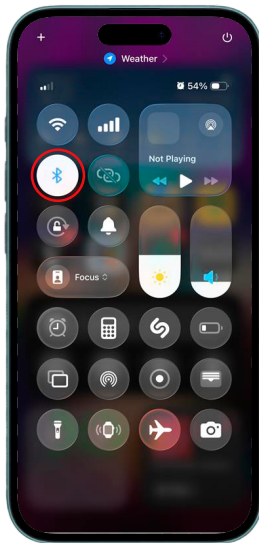
All settings can be configured in the inBiot setup app. You can download this application through the links to the stores or by scanning the following QR code.



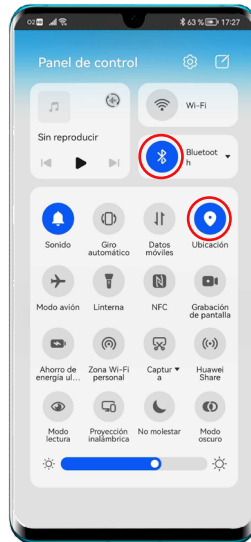
## Setting up Ethernet

### Before you begin

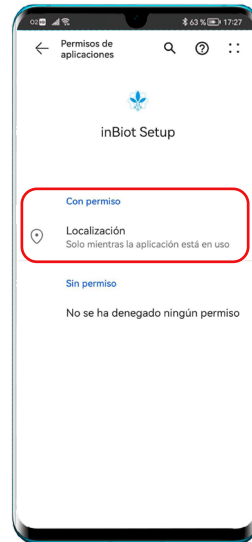
1. Remember to turn on Bluetooth on your phone. For Android, also turn on location and make sure the app has permissions to use it.



iOS (iPhone)



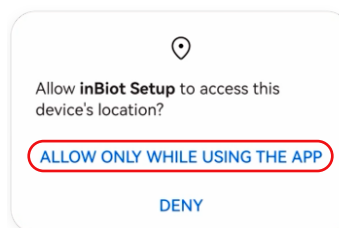
Android



2. Open "inBiot Setup" app. If a message appears requesting permission to use the location, allow the app to use it.

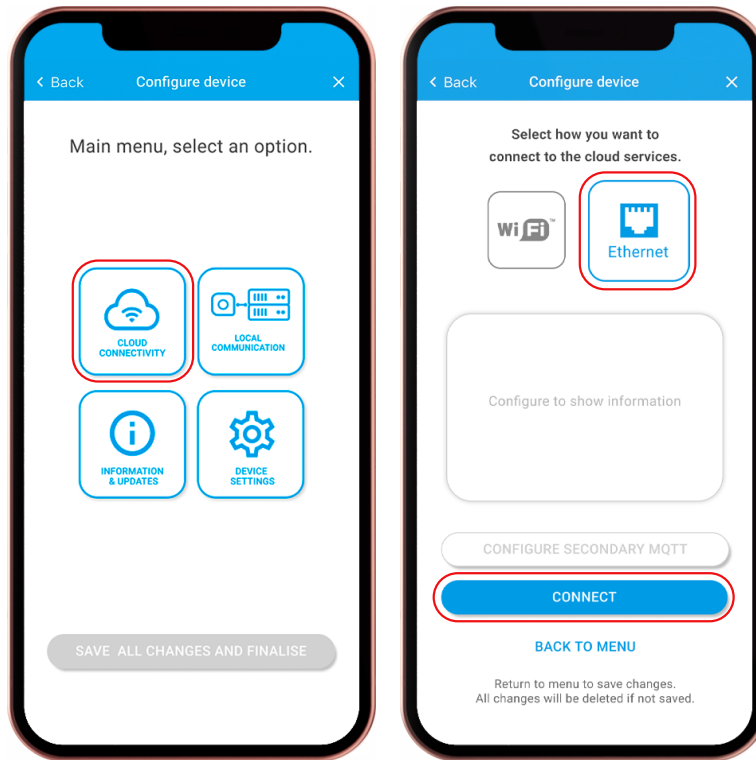


inBiot Setup

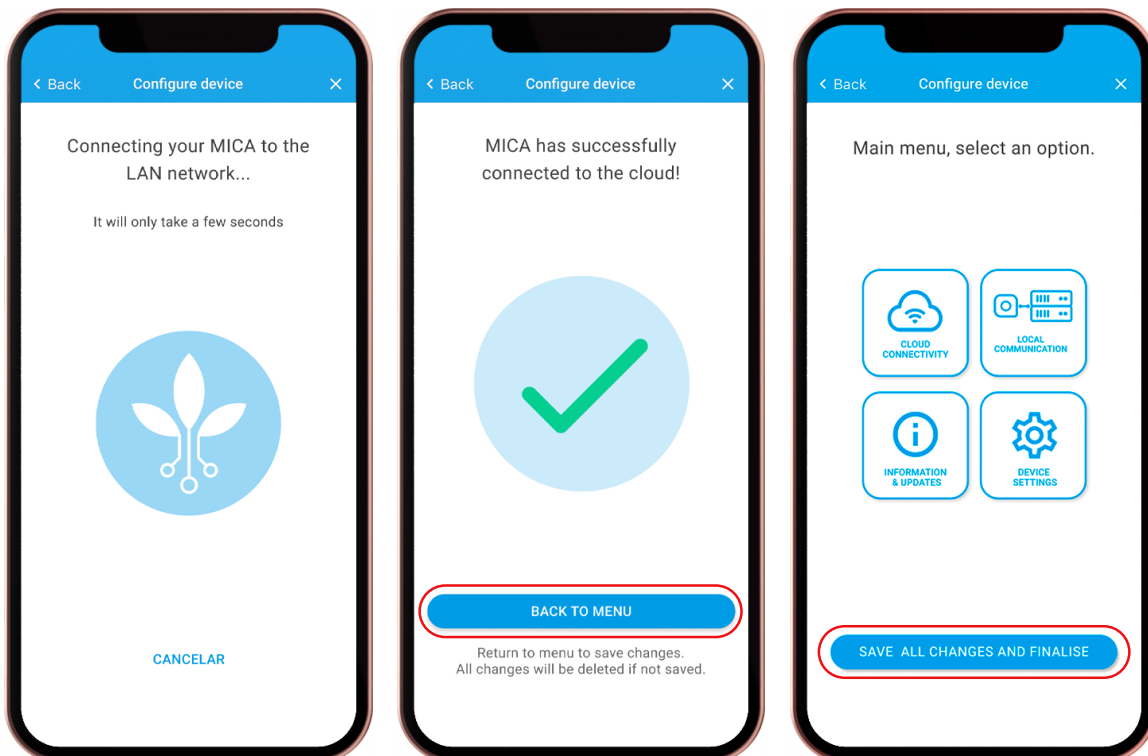


## Settings

1. On the main menu select CLOUD CONNECTIVITY.
2. Then, select the correct installation type, in this case Ethernet and press CONNECT.

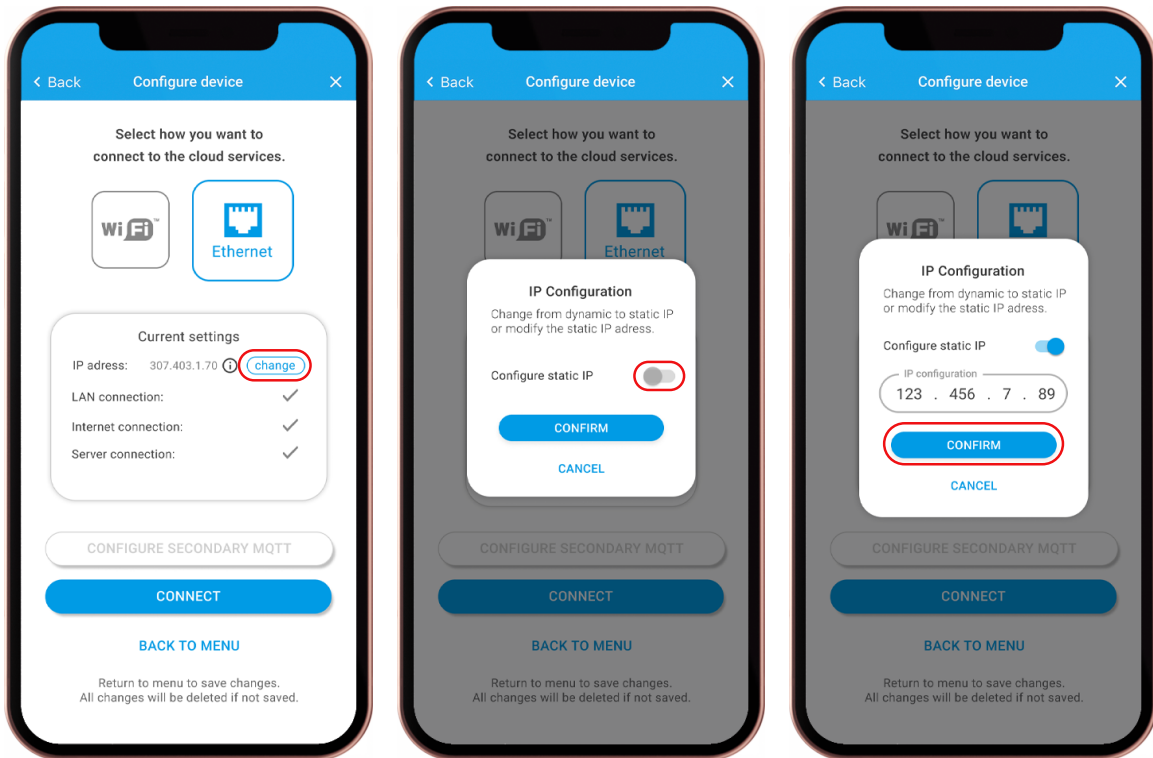


3. Wait while the settings are processed and once the configuration is complete, remember to return to the Main menu and save the changes.



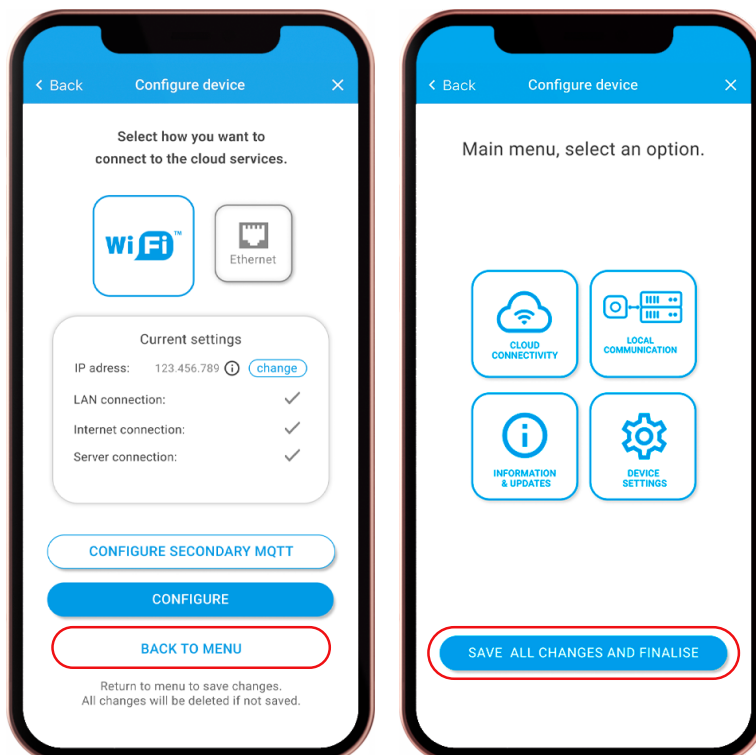
4. If you wish to change the Static IP Address, go back to CLOUD CONNECTIVITY on the Main Menu, and press "change" in the Ethernet Settings.

5. Then, switch the Static IP configuraion toggle ON, write the new IP address and press CONFIRM.



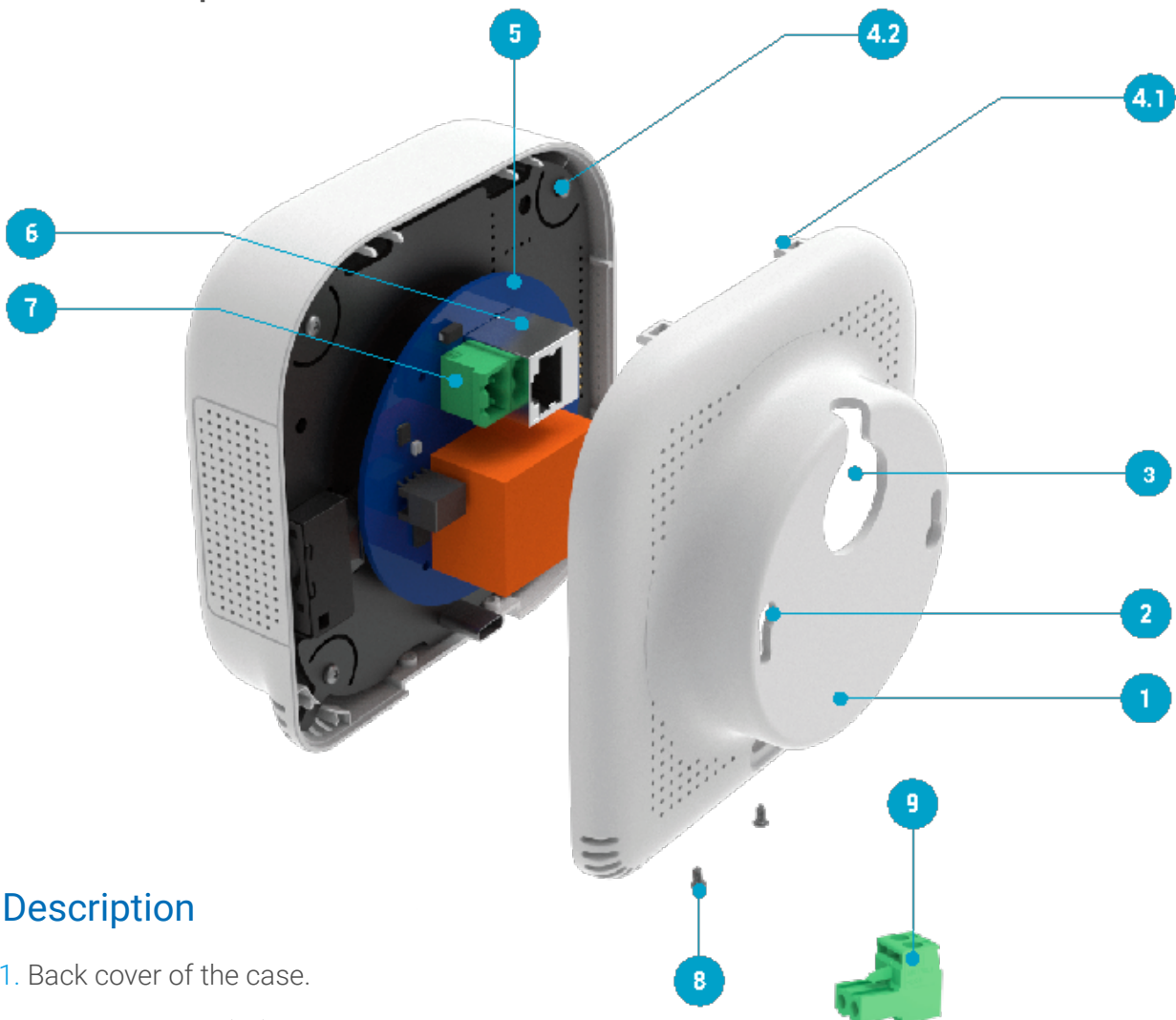
**Note:** Make sure that the static IP you are introducing does not collide with any IP already used in the network. The device might not be able to interact properly with the network and other device's connection might also be altered.

6. To apply the changes to the static IP address, make sure to go back to the main menu and save the changes.



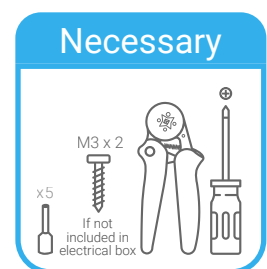


## Parts and pieces



## Description

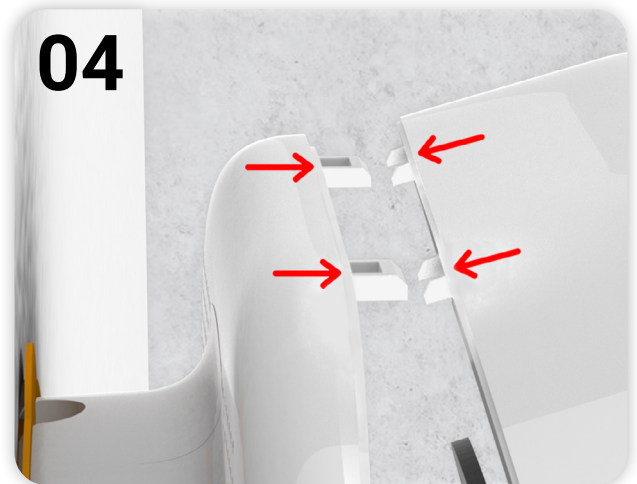
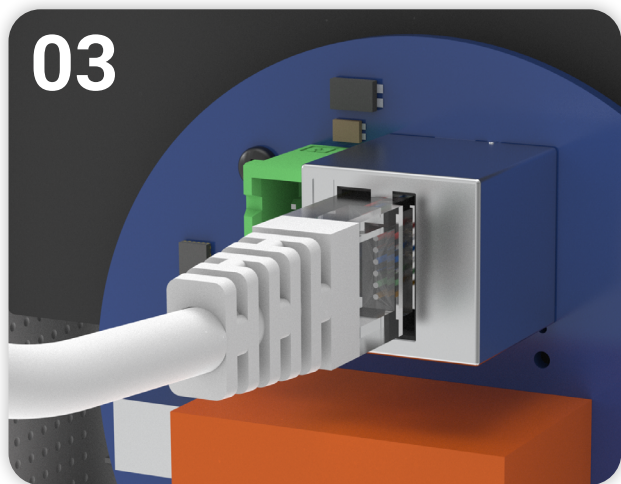
1. Back cover of the case.
2. Mounting holes (x2).
3. Cable inlet.
4. 1) Assembly hooks (x2).  
2) Assembly guides (x2).
5. Electronic Motherboard (MOBO).
6. Female Ethernet terminal.
7. Female power terminal.
8. Assembly screws (x2).
9. Male power terminal.



Note: The recommended height for installation is 120 - 180cm.

# Ethernet (PoE)

## Steps to follow

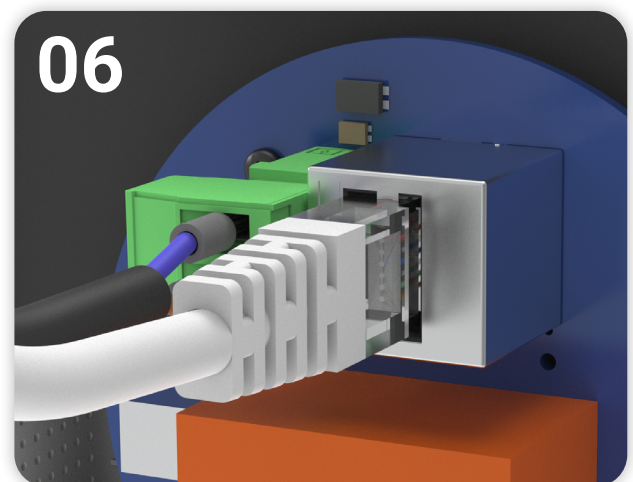
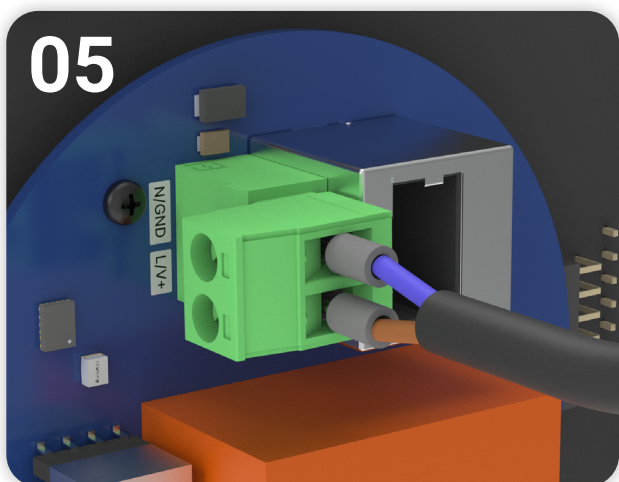
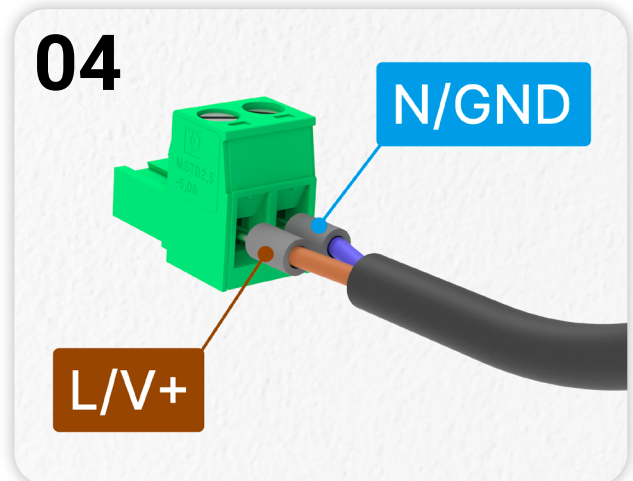


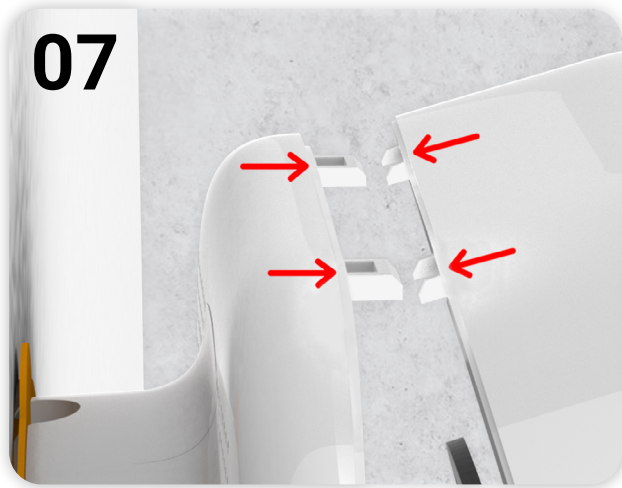
## Description

1. To begin, run the power cable (PoE) through the inlet ③ located on the back cover ① of the case.
2. Next, mount the back cover ① to the wall. To do this, insert the screws in the wall through the mounting holes ② and rotate the housing so that it is straight. Then, using a screwdriver tighten the screws to secure it in position.
3. Connect the Ethernet cable to the female Ethernet terminal ⑥ located on the motherboard ⑤.
4. You can now close the MICA: Align the assembly guides ④ with the assembly hooks ④ (this must be done with the housing slightly tilted) and then close the back cover ①.

# Ethernet (110 - 240V AC / 8 - 36V DC)

## Steps to follow





## Description

1. To begin, run the power cable (PoE) through the inlet **3** located on the back cover **1** of the case.
2. Next, mount the back cover **1** to the wall. To do this, insert the screws in the wall through the mounting holes **2** and rotate the housing so that it is straight. Then, using a screwdriver tighten the screws to secure it in position.
3. **Before proceeding**, add ferrules to the wires on the power cable.
4. Next, connect the power wires to the male power terminal **9** provided. If the power supply is **direct current (8 - 36V DC)**, remember to respect the order of the inputs (**V+ and GND**).
5. Connect the power cable to the female power terminal **7** located in the motherboard **5**.
6. Connect the Ethernet cable to the female Ethernet terminal **6** located on the motherboard **5**.
7. You can now close the MICA: Align the assembly guides **4** with the assembly hooks **4** (this must be done with the housing slightly tilted) and then close the back cover **1**.



Copyright © inBiot Monitoring SL