

Change server IP address

RMZ-1215-Gxx

V1.0

Contents

Contents..... 2

1) History..... 3

2) General 3

3) Tool explanation..... 3

4) Support 4

1) History

Rev.	Date	Description	Init.
1.0	06-01-26	Initial release of the document	TS

2) General

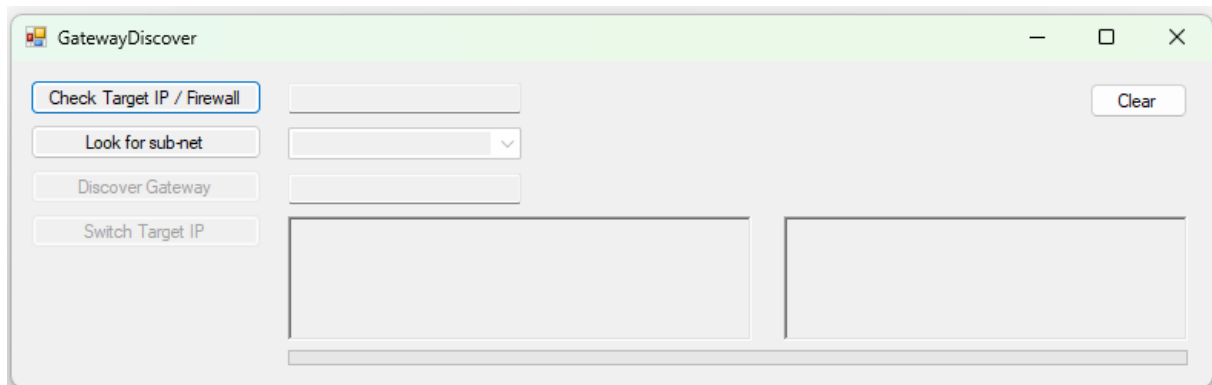
This document describes how to convert an Rmoni gateway so that it connects to a new server at a different IP address. This is necessary in order to remain connected to the Rmoni database in the future, ensuring that the measurement data remains available online.

An important requirement is that the laptop, with the necessary software, is located in the subnet of the network infrastructure in which the gateways are installed.

As you're probably asked to run the described action below, the requester will provide you a list with target devices and the corresponding unique MAC address.

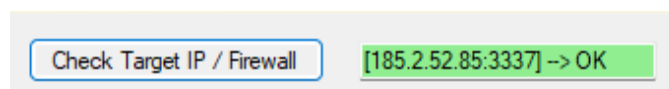
3) Tool explanation

To open the tool run the executable file "GatewayDiscover.exe".



1) "Check Target IP/Firewall":

This button is active after opening the tool. After pressing it, it will establish a connection to the desired target to verify the adjustment. It will provide feedback if everything is OK. After this, the other buttons can also be used.

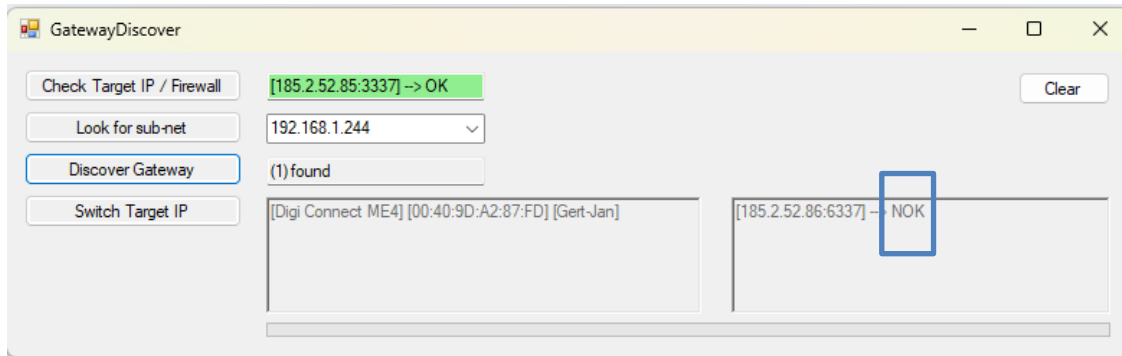


If this first button gives a NOT OK feedback, a minor adjustment should be made to your internet firewall. The following article provides some background information on this:

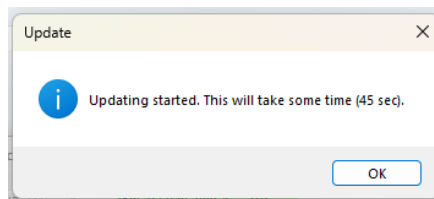
[Ensuring C10/C50 internet connectivity :](#)

ALLOW [RAW TCP] from [internal IP] to 185.2.52.85 at port 3337 should be added in this case to proceed.

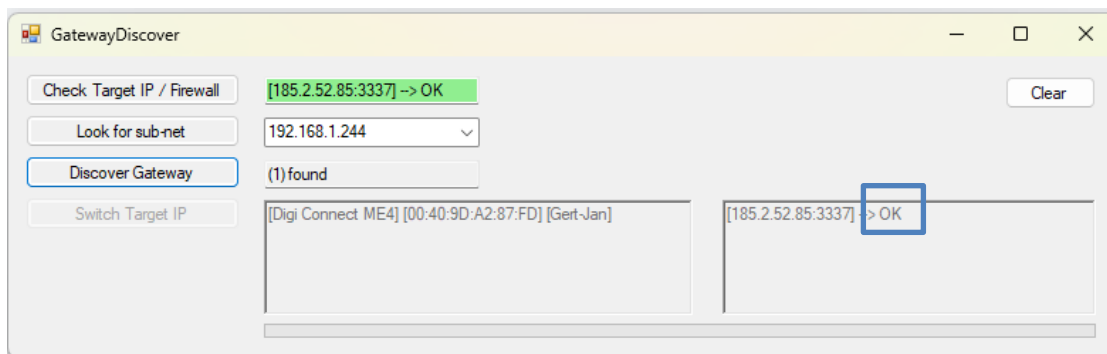
- 2) **“Look for sub-net”**: Then press this button. This will indicate the subnet to which the laptop has access. If several are found, steps 3 and 4 must be performed on all subnets.
- 3) **“Discover gateway”**: This action searches for the devices that need to be adjusted and displays the result on the right. If all the devices found receive an ‘OK’ confirmation, no action is required and the ‘Switch Target IP’ button will not become active. If the result for a device found is ‘NOK’, the following action can be performed.



- 4) **“Switch Target IP”** : When this button is pressed, the IP will be redirected to the new IP.



- 5) **Repeat steps 3 + 4**: After this, the flow must be repeated to double confirm that the device in question has changed from ‘NOK’ to ‘OK’.



4) Support

If you encounter any problems, please contact helpdesk@rmoni.com for further assistance. We're happy to assist.