



# HANNA & AREA PROGRAM GUIDE

PUBLISHED AUGUST 2025



*Enhancing people, business, and community!*

Phone: 403.854.2099  
Toll Free: 1.888.854.2099  
Fax: 403.854.4166  
Email: [connect@lynkscommunity.com](mailto:connect@lynkscommunity.com)  
Website: [lynkscommunity.com](http://lynkscommunity.com)  
Facebook: [facebook.com/lynkscommunity](https://facebook.com/lynkscommunity)

Hours: 9:00 am to 4:30 pm Monday to Friday

Address: Located in the Provincial Building at 401 Centre St. Box 1255, Hanna, AB T0J 1P0

Lynks Harvest Sky Services and Supports Society is a registered charity, operating as "Lynks".

## Vision

Enhancing people, business, and community.

## Mission

Inspired by social purpose, Lynks understands the region it calls home and creates the pathways and partnerships necessary to support the growth of the community, its businesses, and its people. Lynks provides impactful projects, programs, and services in the Harvest Sky Region that support employment, learning, business, and community.

## Lynks Staff

|                  |  |
|------------------|--|
| Doray Veno       | Executive Director                                 |
| Adeline Cottrell | Bookkeeper and Office Administration               |
| Amanda Janssen   | Career Services Coordinator                        |
| Laura Creasy     | Finance and Operations Coordinator                 |
| Michelle Haag    | Communications Manager                             |
| Robin Moench     | Program Assistant/Connecting Community Coordinator |
| Sherri Schewe    | Program Facilitator/Transportation Coordinator     |
| Tracy Morgan     | Literacy Coordinator                               |

## Lynks Board

|                   |                     |
|-------------------|---------------------|
| Kelly Lewis       | Board Chair         |
| Brenda Schnurer   | Vice Chair          |
| Caroline Siverson | Treasurer/Secretary |
| Kyle Olsen        | Director            |
| Tally Quaschnick  | Director            |
| Janice Williams   | Director            |
| Kelsey Yule       | Director            |

## Privacy Policy

Personal information will be collected for the purpose of operating and administering our programs and services pursuant to Section 33c of the Freedom of Information and Protection of Privacy Act. Questions about collection may be directed to: 403.854.2099 or Box 1255, Hanna, AB T0J 1P0.



# Proudly Serving our Communities for 70 Years

EST. 1955

## FRESON BROS.

70th Anniversary

1955 - 2025

55 Years of Family Values

freson.com   

## Table of Contents

|  |    |  |    |
|--|----|--|----|
| LYNKs .....                                | 2  | UP Skills for Work.....                      | 24 |
| How to Register for a Course .....         | 5  | SAFETY .....                                 | 24 |
| Career Services .....                      | 7  | Child Care Emergency First Aid .....         | 24 |
| Community Learning Program .....           | 9  | Heart & Stroke Basic Life Support (BLS)..... | 24 |
| Adult Literacy Program .....               | 10 | Non-Restricted Firearms Training .....       | 24 |
| Family Literacy Program .....              | 11 | Red Cross Re-Certification for               |    |
| Local Loop .....                           | 13 | Standard First Aid.....                      | 25 |
| Reaching Home Program.....                 | 14 | Red Cross Blended Standard First Aid....     | 25 |
| Connecting Community .....                 | 16 | Red Cross Emergency First Aid .....          | 26 |
| Harvest Sky Economic Development Corp..... | 18 | Red Cross Standard First Aid .....           | 26 |
| Campus Alberta Central .....               | 19 | COMPUTER TRAINING .....                      | 29 |
| ONLINE WORKPLACE SAFETY TRAINING ...       | 20 | Drop In Tech Help .....                      | 29 |
| Alberta Basic Security Training .....      | 20 | Microsoft Excel Basic .....                  | 29 |
| Food Handler Certificate.....              | 20 | Microsoft Excel Intermediate .....           | 29 |
| Construction Safety Training System        |    | Microsoft PowerPoint .....                   | 29 |
| (CSTS 2020).....                           | 20 | Microsoft Publisher.....                     | 29 |
| ProServe Liquor Staff Training .....       | 20 | Microsoft Word Basic .....                   | 29 |
| BUSINESS .....                             | 21 | Microsoft Word Intermediate .....            | 30 |
| Community Futures Meridian .....           | 21 | Microsoft Word Basic Drop In Sessions...     | 30 |
| Business Link.....                         | 21 | TOWN OF HANNA.....                           | 31 |
| IS ENGLISH YOUR SECOND LANGUAGE? ....      | 21 | Programs and Services for                    |    |
| Canadian Citizenship Test Preparation...   | 21 | Children and Youth .....                     | 32 |
| Conversation Café .....                    | 21 | Programs and Services for                    |    |
| ESL Intermediate Listening & Speaking..    | 21 | Families and Adults.....                     | 33 |
| IELTS & CELPIP Preparation .....           | 22 | Programs and Services for Seniors .....      | 36 |
| Learn English .....                        | 22 | Funding Programs.....                        | 37 |
| HEALTH AND WELLNESS .....                  | 22 | Facilities.....                              | 37 |
| Alberta Healthy Living Program .....       | 22 | Big Country Primary Care Network .....       | 44 |
| QuitCore .....                             | 22 | Hanna Library .....                          | 45 |
| Recovery College Courses .....             | 22 | Healthy Families.....                        | 47 |
| PERSONAL INTEREST.....                     | 23 | COMMUNITY HEALTH SERVICES .....              | 51 |
| Adult Upgrading .....                      | 23 | Well Baby Clinics .....                      | 51 |
| CAEC Readiness .....                       | 23 | Sexual Health Program .....                  | 51 |
| Money Matters .....                        | 23 | Children's Rehabilitation Services .....     | 51 |
| Pre-Trades Math & Science .....            | 23 | Early Intervention Services .....            | 51 |

## Table of Contents

|   |    |  |    |
|---|----|--|----|
| Oral Health Program.....                  | 51 | Hanna & District Youth Club .....            | 56 |
| Environmental Public Health .....         | 51 | Hanna Continuing Care Recreation Therapy ... | 56 |
| Safe Food Handling .....                  | 51 | Hanna Dance Association .....                | 56 |
| Prenatal Education Classes.....           | 51 | Hanna Figure Skating Club .....              | 56 |
| Public Health Nutrition.....              | 52 | Hanna Girls Fun Team Hockey .....            | 56 |
| Home Care Program .....                   | 52 | Hanna Golf and Country Club.....             | 56 |
| Seniors Outreach Nurses.....              | 52 | Hanna Gymnastics Club .....                  | 56 |
| Addiction and Mental Health.....          | 52 | Hanna Hospital Ladies Auxiliary .....        | 57 |
| Project REACH .....                       | 53 | Hanna Indoor Rodeo Association .....         | 57 |
| COMMUNITY SERVICE GROUPS.....             | 54 | Hanna Kinettes.....                          | 57 |
| AA Meetings .....                         | 54 | Hanna Lacrosse Association.....              | 57 |
| Addiction Services - Drumheller/Hanna ... | 54 | Hanna Minor Ball Association.....            | 57 |
| Around Hanna.....                         | 54 | Hanna Minor Hockey Association.....          | 57 |
| Big Country Housing Authority .....       | 54 | Hanna Minor Soccer .....                     | 57 |
| Big Country Waste Management              |    | Hanna Rangeland 4-H Multi-Club .....         | 57 |
| Commission Multi-Material Recycling       |    | Hanna Motocross Club .....                   | 57 |
| Depot.....                                | 54 | Hanna Seals Swim Club.....                   | 57 |
| Big Country Riding and Roping Club .....  | 54 | Hanna Senior Circle.....                     | 58 |
| Center Street Thrift Store.....           | 54 | Hanna Family Day Homes .....                 | 58 |
| Anchor Psychology Ltd. ....               | 54 | Harvest Sky Animal Rescue.....               | 58 |
| Central Alberta Women's Emergency         |    | Hanna Walk-In Addiction Support .....        | 58 |
| Shelter .....                             | 54 | Hanna Volunteer Fire Department.....         | 58 |
| Delia and District Community Centre.....  | 55 | Kiddies Korner Playschool.....               | 58 |
| Elks of Canada.....                       | 55 | Mental Health Help Line .....                | 58 |
| Family Resource Program .....             | 55 | Narcotics Anonymous .....                    | 58 |
| Family Violence Info Line .....           | 55 | Royal Canadian Legion .....                  | 58 |
| Front Row Centre.....                     | 55 | Scouts Canada .....                          | 59 |
| Girl Guides of Canada .....               | 55 | Stage Hanna .....                            | 59 |
| Hanna Agricultural Society .....          | 55 | True North.....                              | 59 |
| Hanna & District Chamber of Commerce ...  | 55 | Welcome to Hanna.....                        | 59 |
| Hanna & District Community Band .....     | 55 | Churches.....                                | 60 |
| Hanna & District Historical Society ..... | 55 | INDEX.....                                   | 61 |
| Hanna Curling Club .....                  | 56 |  |    |
| Hanna FCSS.....                           | 56 |  |    |
| Hanna Food Bank.....                      | 56 |  |    |



## How to Register for a Course

### How to Register for a Course

#### Walk In

Visit our upstairs office in the Provincial Building at 401 Centre Street, Hanna, AB. Office hours are 9:00 am to 4:30 pm Monday to Friday.

#### Phone

Call Lynks at 403.854.2099.

#### Email us

Send an email to [connect@lynkscommunity.com](mailto:connect@lynkscommunity.com) and indicate the course you would like to register for.

#### Purchase Order/Invoice

Organizations enrolling staff in training can be invoiced and purchase order numbers can be quoted as required.

### Methods of Payment

We accept VISA, Mastercard, debit, cheque, e-transfers, money order, and cash as methods of payment.

### Confirmation

Your registration is not complete until payment has been made. You will be contacted if there is a change in the course for which you registered. If the course is cancelled, a refund will be issued.

### Refund Policy

Course fees are non-refundable unless the course is cancelled or the registrant withdraws one week prior to the course date. Refunds will be issued. Purchases of manuals and books are non-refundable.

# NEW TO OUR COMMUNITY?

Stop by Town of Hanna office or Lynks to pick up your free Welcome to Our Community package!

Package Includes:

- Town of Hanna information
- Welcome to Our Community booklet
- Lynks Program Guide



Town of Hanna 403.854.4433  
302 2nd Avenue West  
Lynks 403.854.2099  
401 Centre Street





*Enhancing people, business, and community!*

Phone: 403.854.2099  
Toll Free: 1.888.854.2099  
Fax: 403.854.4166  
Email: [connect@lynkscommunity.com](mailto:connect@lynkscommunity.com)  
Website: [lynkscommunity.com](http://lynkscommunity.com)  
Facebook: [facebook.com/lynkscommunity](https://facebook.com/lynkscommunity)

**Programs and services include:**

- AHS ID Program
- Career Services
- Community Building Initiatives
- Community Learning Program
- Computer training
- Conference rooms and equipment for meetings, presentations, and training
- Custom training for employees and businesses
- Exam invigilation for post-secondary and accredited institutions
- Fax and photocopy services
- General interest programming
- Labour Market Resource Centre
- Learner support services
- One-on-One Employment Services
- Post-secondary connections to Red Deer Polytechnic and Olds College of Agriculture & Technology through Campus Alberta Central
- Public access computers
- Volunteer Centre
- Workplace Safety training



Doray Veno  
Executive Director

Phone: 403.854.2099 Ext. 205  
Email: [doray@lynkscommunity.com](mailto:doray@lynkscommunity.com)



*Live Love Laugh Shoes*

*Roxie Golby*

Hanna, AB 403.854.7001  
[livelovelaughshoes@gmail.com](mailto:livelovelaughshoes@gmail.com)  
Shoes for the entire family!

## Career Services

*Enhancing people, business, and community!*

*Providing assistance to all Albertans who are looking to find employment or pursue their educational goals.*



Amanda Janssen  
Career Services Coordinator



Robin Moench  
Program Assistant

Phone: 403.854.2099  
Toll Free: 1.888.854.2099  
Email: amanda@lynkscommunity.com robin@lynkscommunity.com  
Website: lynkscommunity.com  
Location: We are located on the main floor in the Provincial Building at 401 Centre Street, Hanna

Funded by:



### One-on-One Employment Services

For individuals who may require extended support, One-on-One Employment Services can help you achieve your goals. Staff will work together with you on a confidential basis to prepare an action plan to help achieve your career and employment goals.

Services include:

- Goal setting
- Job finding skills
- Accessing the hidden job market
- Employability skills
- Job placement
- Workforce development
- Providing necessary courses to obtain employment
- Working with employers and more!

#### Are you an employer looking for employees?

**At Lynks, we understand the time and financial commitment that is involved with hiring new employees.**

**We can help offset the costs! Call Amanda at 403.854.2099 Ext. 209 to find out more!**

Lynks is working to help get Albertans back to work. Call for more information!



### Labour Market Resource Centre

Open Monday to Friday 9:00 am to 12:00 pm and 1:00 pm to 4:30 pm.

The staff in the Labour Market Resource Centre are here to support with your career and employment goals. We offer a wide range of free career resources in print or online, and can assist you with:

- Resumé and cover letter design
- Interview preparation
- Application assistance for AISH, Income Support, and CPP-Disability
- Life skills workshops
- Budgeting workshops
- Career and occupational assessments
- Assistance with post-secondary planning

For individuals seeking a resumé or cover letter, our ALIS resource library has the tools you need to do it yourself, or let us take care of it for you.

The Labour Market Resource Centre is open to connect with Albertans who are looking for a career change, would like to return to the workforce, are unemployed, under-employed, or are having trouble keeping employment. Our Labour Market Resource Centre offers access to our in-house job board, as well as public access computer and phone use for clients.

Lynks Labour Market Resource Centre operates with confidentiality and can help guide clients to appropriate programs and services available through Lynks and Assisted Living and Social Services.

For group workshops, or one-on-one support in post-secondary planning, work search training, interview preparation, or other employment seeking essential skills; phone 403.854.2099 to book an appointment.

*The Province of Alberta is working in partnership with the Government of Canada to provide employment support programs and services.*



### Career and Educational Planning

Lynks is proud to offer confidential individualized career and educational planning sessions. Sessions are available to all individuals exploring options for career and educational goals.

Call 403.854.2099 to set up a time that is convenient for you.

Sessions include:

- Career assessments and research
- Occupational profiles and investigations
- Personality assessments



*No matter what stage of career development you are at, Lynks can help.  
It's never too early or too late to start planning!*

## Community Learning Program

*Enhancing people, business, and community!*

*Providing learner support services, access to classroom instruction, and online delivery.*



Michelle Haag  
Communications Manager

Phone: 403.854.2099  
Cell: 403.854.8786  
Toll Free: 1.888.854.2099  
Email: michelle@lynkscommunity.com  
tracy@lynkscommunity.com  
sherri@lynkscommunity.com  
Website: lynkscommunity.com  
Location: 401 Centre Street, Hanna.

The Hanna and area Community Learning Program provides learner support services and opportunities for adults no matter where they are on their learning journey. We are pleased to support our partner organizations providing learning opportunities in our community. The Community Learning Program also provides exam invigilation for post-secondary and other accredited institutions.

### Literacy and Foundational Learning

- Adult Literacy Coaching
- Adult and Family Literacy Programs
- English Language learning and tutoring
- Free tutorials on your computer, tablet, or smartphone
- Basic computer training

### Community Capacity Building

- Employment Skill Development
- Health and wellness information sessions
- Mental health training
- Promotion of parenting skills
- Prevention of substance abuse

### General Interest and Custom Programming

- Private training for employees and businesses
- Personal development courses
- Workplace safety training



Sherri Schewe  
Facilitator

Do you require a unique training experience? Whether you are looking for professional development to grow your career or group training for your organization, we can help!

*Community Adult Learning Programs are funded by Alberta Advanced Education.*

### Adult Literacy Program

The Adult Literacy Program provides skills, coaching, and mentoring with adults to help them achieve their personal learning goals, which may include:

- Improving English skills
- Learning how to read or write with confidence
- Improving math or numeracy skills
- Learning how to use a computer
- Being able to perform daily tasks such as banking, reading labels, filling out documents, etc.
- Getting a job or improving workplace skills
- Preparing for the Canadian Adult Education Credential (CAEC)
- Improving communication skills



Tracy Morgan  
Literacy Coordinator

#### Programs offered:

- Community Kitchen
- Canadian Adult Education Credential Tutoring
- Conversation Café
- Money Matters
- One on One English Language Tutoring
- UP Skills for Work

We believe that every learner is capable of success. Our passion is to help learners reach their learning goals and achieve their full potential. If you know of someone who needs our assistance, please encourage them to contact us. We are here to help and welcome all referrals. It's never too late to learn!

#### Want to Help?

##### Become a Learning Skills Coach Today!

Enrich the life of an adult learner; become a learning coach. The experience will change their life and yours! There are no prerequisites to become a learning skills coach; just bring your passion for helping people, your sensitivity, and confidentiality. Ongoing training, resources, and continued support are provided. If you or someone you know is interested in volunteering as a learning coach please call today to join our dedicated team of volunteers!

Call 403.854.2099 for more information.





### Family Literacy Program

Family Literacy programs funded by the Community Adult Learning Program prioritize the delivery of intentional activities that build adults' skills and promote the values and benefits of literacy for the entire family. Family Literacy programs provide adult learners with opportunities to increase their own literacy and foundational skills that also strengthen daily literacy activities for all family members.

### Learner Support Services

We can help you find programs and services that meet your needs, free of charge.

We can help if you:

- Need access to or assistance with basic technology
- Want help filling out forms
- Require help registering for an online course
- Want support, guidance, or encouragement for online learning
- Require help with education planning
- Are looking for information on learning opportunities, post-secondary programs, or funding options
- Need information or a referral to community supports or government programs
- Want a quiet and safe place to learn or connect to supports and services



*The Community Adult Learning Program is funded by Alberta Advanced Education.*



## KIDS AT HOPE

**A Worldwide Movement that Believes and Practices the Belief that all kids are capable of success, No Exceptions!**

*What if everyone in our community stopped using the term "Youth at Risk" and instead decided that every child is capable of success, No Exceptions!*

Beginning in 1993, Kids at Hope launched a research project by examining the fields of psychology, education, sociology, recreation, criminology, social work, and medicine to understand better why some children do well and others struggle. Through its efforts, Kids at Hope has identified simple principles and practices that create and activate hope for all through a strategic cultural framework that demonstrates how all young people are capable of success without exception.

For more information contact:

Rick Miller, Founder and Creator Kids at Hope  
fullhopeahead@gmail.com  
602.818.1796

Rick Miller's TEDx Talk  
[https://www.youtube.com/watch?v=vlpDKHw1O\\_c](https://www.youtube.com/watch?v=vlpDKHw1O_c)



## **CARSTAR HANNA**

**Ryan Antosh**

109-1st Ave. West

Hanna, Alberta

**403-854-2287**

hanna@carstar.ca carstar.ca

where accidents unhappen.®



## **C MAYNES PROFESSIONAL CORPORATION**

**CHARTERED PROFESSIONAL ACCOUNTANT**

- Farm Tax Preparation and Financial Statements
- Corporate Tax Preparation and Financial Statements
- Business Tax Preparation and Financial Statements
- Personal Tax Preparation
- Accounting Consulting
- Bookkeeping and GST Reports
- T4 and T5 Preparations
- Estates
- Audits
- AgriStability/AgriInvest Applications
- Corporate Annual Returns - Cores Level 1 Accreditation

Phone: 403.854.4185 Toll Free: 1.855.854.4185 Fax: 403.854.4135  
121 2nd Ave. West. Box 429, Hanna, AB. T0J 1P0

## Local Loop

Local Loop has been made possible with an approved grant through Healthy Aging Alberta Transportation Phase 2.



Local Loop is an in town bus service, that operates every Wednesday from 11:00 am to 3:00 pm. Riding the Local Loop is easy and flexible. Wait at one of the stops below and the bus will pick you up.

The cost of riding the bus is \$5 per Wednesday, with an option to purchase tokens.

- 12th Ave & Palliser Trail
- Lutheran Church
- 3rd St & 8th Ave
- Centennial Place
- Manor
- Freson Bros
- Fresh Market
- Canada Grey
- Pharmasave
- Legion
- Provincial Building
- Post Office/Abby
- Medical Clinic
- Hospital
- Bus Stop at old Primary School
- Lodge



For more information contact Sherri  
at Lynks 403.854.2099



# REACHING HOME PROGRAM INFORMATION



This project is funded by the Government of Canada's Reaching Home: Canada's Homelessness Strategy, which is administered by the Rural Development Network. Individuals and households in Hanna and neighbouring communities, who are at imminent risk of homelessness, may be eligible to access financial support to secure or maintain housing through the Reaching Home Program.

## Eligible expenses include:

- Damage Deposit
- First month rent
- Initial utility hook ups
- Rental arrears, late rent
- Utility arrears, late utility bills
- Move in supplies
- Temporary overnight accommodations
- Grocery gift cards
- Transportation to shelters
- Clothing and personal hygiene supplies

## CONTACT ROBIN



403.854.2099 Ext. 206



robin@lynkscommunity.com



401 Centre Street, Hanna

# VolunteerConnector

The VolunteerConnector gives communities free access to a platform that provides a central location for all your volunteer needs. The platform was created to improve volunteers and organizations overall experience, by connecting them faster.

Some of the features include:

- ✓ A one-stop-shop for all the volunteer positions in the community and surrounding area.
- ✓ Volunteers can follow the organizations they are most interested in and stay informed when the organization posts new positions.
- ✓ Volunteers have the option to create a personal profile saving them from having to complete multiple application forms.
- ✓ Volunteers and organizations can track volunteer hours.
- ✓ Organizations can post unlimited volunteer positions and access volunteer management tools helping to ease the workload.

**Find more information at [volunteerconnector.org](http://volunteerconnector.org)**

## Around Hanna



Around Hanna is home to local organizations and agencies. This web portal helps volunteers and service groups promote their events, initiatives, and projects.

Want information for your group, organization, or agency posted?  
Call Michelle at 403.854.2099 Ext. 207 for more information.

**[lynkscommunity.com/around-hanna](http://lynkscommunity.com/around-hanna)**

### Connecting Community

*Enhancing people, business, and community!*

Community Supports are a vital component of providing clients and community organizations with assistance accessing holistic services to ensure health and well-being including:

- Navigating social programs and services
- Identifying barriers to overall wellness for individuals
- Informing and challenging policy and procedure to better support the needs of community members
- Develop and maintain strong working relationships with employers, in collaboration with Career Services, to assist barriered individuals in attaining meaningful employment
- Ensuring families feel supported in community to build a safe, healthy foundation to grow and reach their goals
- Assisting community organizations to be responsive to the needs of vulnerable and barriered individuals

Lynks provides support to charitable organizations and community volunteers through consultations, workshops, and information to develop community capacity and sustainability. Most of our services are no charge to community groups and include:

- Accurate and confidential referral to services and supports
- Community group information posted on [lynkscommunity.com](http://lynkscommunity.com) through the Around Hanna portal
- Risk management information and resources
- Access to computers
- Use of equipment and meeting space
- Facilitation and personalized presentations to agencies, organizations, and groups
- Workshops, seminars, and training opportunities
- Assistance with researching grants and applications
- Connecting volunteers and organizations to opportunities, resources, and information
- Volunteer Connector



Adeline Cottrell  
Bookkeeper and  
Office Administration



Laura Creasy  
Finance and Operations  
Coordinator





Interested in joining the  
Hanna & District Chamber of Commerce?

Contact our Office:

Call / Tek (403) 854-4004

Email: [HannaDistrictChamber@outlook.com](mailto:HannaDistrictChamber@outlook.com)

More information can be found on our website

[www.hannachamber.ca](http://www.hannachamber.ca)

Follow us on Facebook.com/HannaDistrictChamber

Office Hours:

Tuesday & Wednesday 9:00 am to 3:00 pm



Chamber Bucks are great gift ideas for anyone! Available in any denomination and can be used at over 40 local businesses!



**Chambers of Commerce  
Group Insurance Plan®**  
Jay Garbutt  
(403) 823-3380



HEALTH & DENTAL  
PLANS  
exclusively for  
CHAMBER MEMBERS  
1.833.285.1123  
[chamberplan.ca](http://chamberplan.ca)  
GET A QUOTE

| Chamber Membership Benefits   |               |                 |                 |
|---|---------------|-----------------|-----------------|
|   | GOLD<br>\$300 | SILVER<br>\$150 | BRONZE<br>\$125 |
| Listing on website  | ✓             | ✓               | ✓               |
| Eligibility for Chamber Group Benefits  | ✓             | ✓               | ✓               |
| Business referrals  | ✓             | ✓               | ✓               |
| E-newsletter and community updates  | ✓             | ✓               | ✓               |
| Alberta Chamber of Commerce Value added programs  | ✓             | ✓               | ✓               |
| Canadian Chamber of Commerce member programs  | ✓             | ✓               | ✓               |
| Chamber Buck program  | ✓             | ✓               |                 |
| Exclusive Chamber Member Businesses are added to Shopping Passports during organized events | ✓             | ✓               | ✓               |
| Listing on "Members" website page, with logo  | ✓<br>Large    | ✓<br>Small      |                 |
| Listing on each web page of the Chamber's website scrolling banner                          | ✓             |                 |                 |
| Logo in every newsletter  | ✓             |                 |                 |
| Sponsor logo on every event print out   | ✓             |                 |                 |



**W. Jay Garbutt, Advisor**  
Garbutt Financial Solutions Corp.  
Phone: 403-823-3380  
Email: [jay.garbutt@sunlife.com](mailto:jay.garbutt@sunlife.com)



**Sun Life**  
Life's brighter under the sun



## HARVEST SKY REGION

ECONOMIC DEVELOPMENT CORPORATION

### At the Harvest Sky Economic Development Corporation, we believe

our region is the destination of choice for investors, visitors and residents.

We support our strong and proud communities to help our region grow and prosper.

#### Contact Info

Office: 403-854-5999

Email: [ecdev@harvestsky.ca](mailto:ecdev@harvestsky.ca)

[harvestsky.ca](http://harvestsky.ca)

### We are promoting our region through:

Telling the story of the Harvest Sky Region

Supporting new and existing businesses

Driving business and investment and promoting industry diversification

Attracting new residents

Strengthening and promoting tourism

Building on our exemplary quality of life

We believe that regional collaboration is key to being competitive. Pooling resources strengthens our stakeholder's experience and quickly moves the region towards its growth goals. Economic development is a community effort – if you have an opportunity you believe will benefit our region, contact us today!

Harvest Sky Economic Development Corporation is a non-profit organization formed in 2012.



Farm, Ranch, Commercial, and Residential Real Estate  
Call Todd Wallace at 403-435-0064  
[todd@harvestrealestate.ca](mailto:todd@harvestrealestate.ca)

Serving East Central Alberta with agents in Hanna and Brooks.

# Campus Alberta Central

Learning Made Local

Post-secondary education in your own community!



## KICKSTART YOUR EDUCATION WITH CAMPUS ALBERTA CENTRAL!

Online & Flexible Learning Opportunities with Local Support!

### OLDS COLLEGE OF AGRICULTURE & TECHNOLOGY PROGRAMS

- Agribusiness Finance Certificate
- Agronomy Certificate Level 1
- Apprenticeship & Industry Training (AIT) Entrance Exam
- Beef Production Certificate

**AND SO MUCH MORE!**

### RED DEER POLYTECHNIC PROGRAMS

- Bookkeeping Basics Certificate
- Educational Assistant Certificate
- Early Learning & Child Care Certificate
- Health Care Aide Certificate
- Practical Nurse Diploma
  - Business Diploma
- **AND SO MUCH MORE!**

### LOCAL COMMUNITY PROGRAMS

- Health Care Aide Certificate (RDP)
- Practical Nurse Diploma (RDP)

Check our website for start dates & locations for these great Community Programs!

[www.campusalbertacentral.com](http://www.campusalbertacentral.com)

### FOR MORE INFORMATION

- 📞 **403-823-8300**
- 🌐 [campusalbertacentral.com](http://campusalbertacentral.com)
- 🌐 [drumhellercommunitylearning.com](http://drumhellercommunitylearning.com)
- ✉️ [info@drumhellercommunitylearning.com](mailto:info@drumhellercommunitylearning.com)

SCAN ME! >>





### ONLINE WORKPLACE SAFETY TRAINING

#### Computers for Online Learning

Public access computers at Lynks are available for online training. Call 403.854.2099 to reserve your time on one of our computers.

#### Alberta Basic Security Training [columbia.ab.ca/programs-courses](http://columbia.ab.ca/programs-courses)

Individuals who obtain a provincial licence after taking this course may be employed in one of the following positions:

- Security Services (static or mobile)
- Loss Prevention Worker
- Executive Security (body guards)
- In-house Security
- Dog Patrol Services
- Alarm Responders (those who physically respond; not monitoring a screen)

Any person in Alberta who works in the above list of security service positions must have a licence. To obtain this licence an individual must complete a mandatory training program and write the provincial exam.

Lynks Proctoring Fee is \$35.  
Exam Site: Upstairs Lynks office

#### Food Handler Certificate - SafeCheck® Advanced [canadianfoodsafety.com](http://canadianfoodsafety.com)

SafeCheck® Advanced Food Safety course educates food service workers on important food safety topics related to food handling. This course provides participants with comprehensive food safety training to help prevent foodborne illness and maintain safe practices in food service establishments. Upon completing the course, learners will be equipped to take the certification exam required to receive their food handler certificate.



#### Construction Safety Training System (CSTS 2020) [youracsa.ca/courses/csts2020](http://youracsa.ca/courses/csts2020)

This course is designed for the individual worker and is offered online. The training is divided into separate modules that can be completed at your own pace. The full program takes on average six hours to complete. This course gives a basic overview of various health and safety topics, and students are tested for 100% mastery of content. This program is a pre-entry requirement for many construction industry work sites.

#### ProServe Liquor Staff Training [proserve.aglc.ca](http://proserve.aglc.ca)

ProServe is Alberta's responsible liquor service and sales program. It's designed to help ensure that liquor is sold and served according to law and AGLC policies, and in a way that keeps customers, guests and others safe from alcohol-related harms. Other Canadian provinces have similar responsible liquor service programs.

ProServe can help licensees and industry workers:

- Curb the problem of underage drinking
- Reduce alcohol over-consumption
- Reduce impaired driving, and
- Reduce the risk of violence

### BUSINESS

#### Community Futures Meridian

Providing free one-on-one advice for entrepreneurs and small business owners. Offers services and programs to help small business owners learn how to navigate the startup process and grow their businesses. Community Futures Meridian has a range of programs and training opportunities to guide you toward your goals. Explore their resources at [cfask.ca](http://cfask.ca)



#### Business Link

Access Free Business Support! Get the expert support you need to navigate the process of starting and running a business.

- Receive free one-on-one business advice
- Participate in free webinars, events & interactive workshops
- Find informative resources, guidebooks, & videos
- Access in-depth market research

Find out more at [businesslink.ca](http://businesslink.ca)



### IS ENGLISH YOUR SECOND LANGUAGE?

#### Canadian Citizenship Test Preparation

Where: Lynks

Cost: No Charge

To become a citizen, you will need to take a Canadian Citizenship test to meet the knowledge requirement for citizenship. With one on one support while using the Discover Canada Study Guide, you will learn about Canada's history, geography, economy, government, laws, and symbols as well as the rights and responsibilities of Canadians.

Available upon request. Phone 403.854.2099 or text 403.854.8786.

#### Conversation Café

When: Thursdays 10:00 am to 11:30 am

Where: Lynks Boardroom

Join us for a casual information session, once a week. General conversation in English, language support, information about services in Hanna, Alberta, and Canada. Build connections with each other and your new community. Text 403.854.8786 or call 403.854.2099 to register.



#### ESL Intermediate Listening and Speaking

Where: Online/Anytime

Cost: \$312.75 (funding may be available)

Instructor: Norquest College

This 12-week online course is designed primarily for rural learners and includes approximately 45 hours of instructor-led activities presented in an online real-time or online anytime delivery format. In addition, 30 hours of in-person tutorial support are available to you for free at Lynks.

This flexible learning format will help English language learners improve their listening and speaking skills. In this course, students will gain confidence and competency in listening and speaking through the use of high-interest content. Intermediate-level grammar, vocabulary, and pronunciation strategies will be taught. For Canadian and permanent resident students, no application fee, and flexible start dates. Call 403.854.2099 for more information.



### IELTS & CELPIP Preparation

Where: Lynks  
Cost: No Charge

International English Language Testing System (IELTS)  
Canadian English Language Proficiency Index Program (CELPIP)

- Get ready to write the IELTS or CELPIP exam.
- Learn reading, writing, listening, and speaking skills.
- Study and practice the format of the exam.

Available upon request. Phone 403.854.2099 or text 403.854.8786.

### Learn English

Where: Lynks  
Cost: No Charge

Improve your reading, writing, listening, and speaking skills. Book a time that works for you!  
Text 403.854.8786 or call 403.854.2099 to register.

## HEALTH AND WELLNESS

### Alberta Healthy Living Program

This program offers a number of programs and services to Albertan adults living with chronic health conditions and/or diseases. Learn how to manage your chronic condition or disease with our health education classes. You can learn more about:

- Managing Diabetes
- Heart and Stroke Education
- Managing Stress
- Moving Matters
- Weight Management
- Supervised Exercise Program
- Better Choices, Better Health
- Living with Chronic Disease
- And much more!

Call 1.877.314.6997 to register. If you require access to a computer to join a session, please give Lynks a call at 403.854.2099.

### QuitCore

Where: Virtual Zoom Sessions  
When: Thursdays, October 2 to November 6  
Presenter: Trina Macfarlane, Addiction Counsellor, Recovery Alberta

QuitCore is a FREE group tobacco cessation program led by a trained counsellor. Make new friends, share stories and tips, and celebrate milestones. Call Trina at 403.820.7863 to save your spot.



### Recovery College Courses

Recovery College has an educational-based approach that focuses on helping people recognize and develop their own resourcefulness and awareness to support themselves or their loved one's recovery journey. All the courses are developed and delivered in partnership with our peer supporters who are experts by experience: they have their own story of a mental health or substance concern or are supporting a loved one.

Recovery College courses are interactive and create positive learning experiences, emphasizing connection, hope, and belonging. An emphasis is placed on individual's talents and strengths. The courses inspire optimism, encourage students to consider future opportunities, and move people towards personal empowerment.

Topics include:

- Caregiver Connections: Weekly support group
- Daily Check In: Resiliency
- Daily Check In: Self-Disclosure
- Road to Recovery: Four Sessions
- Self-Care Stress & Planning for Wellness
- And more!

Everyone is welcome to attend the free courses. If you need access to a computer to participate online, please call Lynks at 403.854.2099.

Browse upcoming courses at [recoverycollegcentralalberta.ca](http://recoverycollegcentralalberta.ca)



## PERSONAL INTEREST

### Adult Upgrading

Students have the freedom to learn anytime, anywhere. As an adult learner, this flexibility empowers you to pursue the education you deserve on your own schedule. Whether you're working toward your high school diploma, improving your grades, or meeting post-secondary requirements, there is a diverse selection of courses designed to help you achieve your goals. For more information contact Michelle at 403.854.2099.



### CAEC Readiness

Where: Online/Anytime

Cost: \$312.75 (funding may be available)

Delivered in partnership with Norquest, this flexible learning format allows students to learn strategies to prepare for writing the Canadian Adult Education Credential (CAEC) exam. Students focus on developing and improving their writing, reading, science, social studies, and math skills. Students also practice various CAEC assessment tests to help them feel more comfortable in a timed testing environment.

Online anytime courses allow students to learn on the day of the week and time of the day that works best for them. Students are given the flexibility of choosing their own study schedule or using the one suggested by the instructor. 30 hours of in-person tutorial support are available to you for free at Lynks. For Canadian and permanent resident students, no application fee, and flexible start dates.

### Money Matters

Where: Lynks

Cost: No Charge

Financial Literacy for Adult Learner's

In these workshops you will learn about

- Spending Plans
- Banking Basics
- Borrowing Money
- Ways to Save
- Smart Shopping

Through approachable, discussion-based activities you will improve your financial literacy. Workshops can be delivered in person or online. For more information call 403.854.2099, or register online at [lynkscommunity.com](http://lynkscommunity.com)



### Pre-Trades Math & Science

Where: Online/Anytime

Cost: \$312.75 (funding may be available)

Instructor: Norquest College

Delivered in partnership with Norquest, this flexible learning format allows students to focus on developing the math and science skills they need to pass the apprenticeship exam. Students will also practice simulated trade exams to help them feel more comfortable in a timed testing environment. 30 hours of in-person tutorial support are available to you for free at Lynks.

For Canadian and permanent resident students, no application fee, and flexible start dates. Call 403.854.2099 for more information.





### UP Skills for Work

Where: Lynks

Cost: No Charge

UP Skills for Work is dedicated to helping learners develop a comprehensive set of employability and life skills. Through a variety of targeted programs and resources, participants can enhance their abilities in areas such as communication, teamwork, problem-solving, and time management. These skills are key for achieving success both personally and professionally, enabling individuals to thrive in today's competitive job market and lead fulfilling lives. Book a time that works for you!



## SAFETY

### Child Care Emergency First Aid

Where: Lynks Upstairs Boardroom

When: TBA

Time: 8:00 a.m. to 5:00 p.m.

Cost: \$145

Instructor: Les Watts

During this one-day Red Cross course, you will learn emergency skills required to take care of children and infants. Competencies include assessing airway, breathing, circulation and shock (no adult skills), respiratory and cardiac arrest (no adult skills), head and spine injuries, bone, muscle and joint injuries, wound care, environmental emergencies, heat and cold injuries, poisons, and keeping children safe. Call 403.854.2099 to save your spot.

### Heart and Stroke Basic Life Support (BLS)

Where: Lynks Upstairs Boardroom

When: TBA

Basic Life Support (BLS) is the foundation for saving lives after cardiac arrest. This course is generally for those entering health care aide training or any nursing students, and those who work in health care or dental environments. It is designed for those who provide care to patients in a wide variety of settings and teaches both single-rescuer and team basic life support skills for application in pre-hospital and in-facility settings.

This BLS course teaches learners to promptly recognize several life-threatening emergencies, give high-quality chest compressions, deliver appropriate ventilations, and provide early use of an AED. It includes adult, child, and infant rescue techniques. Certification is valid for one year. Call 403.854.2099 to save your spot.



### Non-Restricted Firearms Training

Where: Lynks Upstairs Boardroom

When: TBA

Time: TBA

Cost: \$165

Instructor: Kelly Lewis

The Non-Restricted Canadian Firearms Safety Course (CFSC) is the course required to apply for your Non-Restricted Possession and Acquisition Licence (PAL). The Non-Restricted Canadian Firearms Safety Course (CFSC) is 8 hours long which includes lecture and hands on training. Hands on training is done with real but deactivated rifles and shotguns, with dummy ammunition. A Non-Restricted PAL gives you the ability to purchase ammunition as well as most long guns, such as rifles and shotguns. You will be presented with your copy of the course report and all documentation needed to apply for your PAL at the end of the class. To register online go to [lynkscommunity.com](http://lynkscommunity.com) or call 403.854.2099.

### Red Cross Re-Certification for Standard First Aid

Where: Lynks Upstairs Boardroom  
When: Monday, September 8  
Tuesday, October 14  
Monday, November 10  
Monday, January 12  
Tuesday, February 10  
Time: 8:00 am to 5:00 pm  
Cost: \$145  
Instructor: Les Watts

During this 8-hour first aid course you will learn how to prevent injuries and to think, react, and improvise in emergency situations. This course includes preparing to respond, the EMS system, "Check, Call, Care", airway emergencies, breathing and circulation emergencies, respiratory and cardiac arrest, wound care, head and spine injuries, bone, muscle and joint injuries, sudden medical emergencies, environmental emergencies, poisons, and medical emergencies. Level C CPR (includes adult, child, and infant skills) and AED (automated external defibrillation) training will also be covered.

*NOTE: You cannot take this course if your Standard First Aid certificate is expired.*

To register online go to [lynkscommunity.com](http://lynkscommunity.com) or call 403.854.2099.



### Red Cross Blended Standard First Aid

Where: Lynks Upstairs Boardroom  
When: Monday, September 8  
Tuesday, October 14  
Monday, November 10  
Monday, January 12  
Tuesday, February 10  
Time: 8:00 am to 5:00 pm  
Cost: \$175  
Instructor: Les Watts

*NOTE: Participants must complete the online portion before attending the in-class portion. Ensure you plan your time accordingly, as the online portion may take up to eight hours to complete.*

Learn how to prevent injuries and to think, react, and improvise in emergency situations. This two-day course (one day online & one day in person) includes preparing to respond, the EMS system, "Check, Call, Care", airway emergencies, breathing and circulation emergencies, respiratory and cardiac arrest, wound



403.854.3753

care, head and spine injuries, bone, muscle and joint injuries, sudden medical emergencies, environmental emergencies, poisons and medical emergencies. Level C CPR (includes adult, child, and infant skills) and AED (automated external defibrillation) training will also be covered. Call 403.854.2099 to save your spot or register online at [lynkscommunity.com](http://lynkscommunity.com).

### Red Cross Emergency First Aid

Where: Lynks Upstairs Boardroom  
When: Tuesday, September 9  
Tuesday, January 13  
Time: 8:00 am to 5:00 pm  
Cost: \$175  
Instructor: Les Watts

This basic one-day course offering lifesaving first aid, cardiopulmonary resuscitation (CPR), and AED (automated external defibrillation) skills for the workplace or home. This course meets legislation requirements for provincial/territorial worker safety and insurance boards and includes the latest first aid and CPR guidelines. To register online go to [lynkscommunity.com](http://lynkscommunity.com) or call 403.854.2099.

### Red Cross Standard First Aid

Where: Lynks Upstairs Boardroom  
When: Tuesday & Wednesday, September 9 & 10  
Tuesday & Wednesday, January 13 & 14  
Time: 8:00 am to 5:00 pm  
Cost: \$175  
Instructor: Les Watts

Learn how to prevent injuries and to think, react, and improvise in emergency situations. This two-day course includes preparing to respond, the EMS system, "Check, Call, Care", airway emergencies, breathing and circulation emergencies, respiratory and cardiac arrest, wound care, head and spine injuries, bone, muscle and joint injuries, sudden medical emergencies, environmental emergencies, poisons, and medical emergencies. Level C CPR (includes adult, child, and infant skills) and AED (automated external defibrillator) training will also be covered. To register online go to [lynkscommunity.com](http://lynkscommunity.com) or call 403.854.2099.

# Do what you love.



Get a personalized daily bank account that fits your life.

Visit 302 Centre Street, Hanna

 servus credit union  
Feel good about your money.\*

# Local Micro Loans



## Hanna & District



**Lori Feader, CEO**

Lori Feader brings over 20 years of experience in leadership, administration, and management to her role as CEO of Community Futures Meridian.

Her diverse background spans multiple sectors, where she has consistently demonstrated a strong ability to lead teams, build partnerships, and support organizational growth. Lori's commitment to rural economic development and community success is at the heart of her work as she guides the Meridian team in empowering entrepreneurs and strengthening local economies.

1-888-919-3800  
office@meridianregion.ca  
125A - 1st Ave East, Kindersley, SK  
<https://cfsask.ca/meridian>



**Cory Harkness**

Cory is Meridian's Business Development Officer. He brings extensive experience in both traditional banking and the Community Futures network. His strong background in financial services and business development is matched by a deep understanding of the unique needs of rural entrepreneurs.



**Jodi Zinck**

Jodi is the Executive Assistant at Meridian Community Futures. She brings a wealth of experience from her previous roles, where she excelled in accounts receivable and payable, social media management, and newsletter creation. Her attention to detail and organizational skills make her an invaluable part of the team.





## LOANS

Get financing specifically designed for your start-up, expansion, or business buyout in a rural community.

## ADVICE

Sorting through what you need to know about business is crucial. We can help you do that.

## SUPPORT

Community Futures provides important strategic business mentoring to help you succeed. We offer virtual training, networking events and share grants and programs that will help your business thrive.

**Small BUT Mighty** Micro Loans. Huge Impact.

Get access to up to 25K and boost your business.

1-888-919-3800

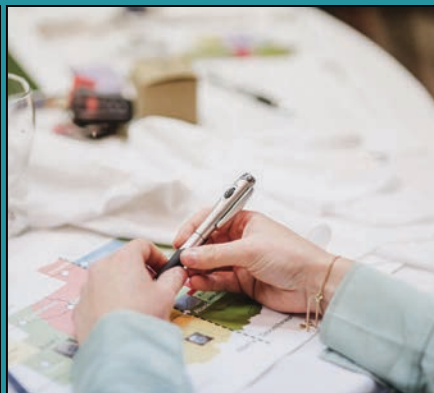
[office@meridianregion.ca](mailto:office@meridianregion.ca)

125A - 1st Ave East, Kindersley, SK

<https://cfsask.ca/meridian>

With the support of:  
Prairies Economic  
Development Canada

Canada



### COMPUTER TRAINING

#### Drop In Tech Help

Where: Lynks

Cost: No Charge

Get your technical questions answered. Learn about Android, iPhone, tablets, social media, laptops, email, and more. We will focus on what you want to learn. Call 403.854.2099 if you would like to set up a one on one session.



#### Microsoft Excel Basic

Where: Lynks Computer Lab

When: TBA

Time: 9:00 am to 3:00 pm

Cost: \$120

Instructor: Terry Siverson

Using a spreadsheet is helpful in presenting numerical information in an organized manner. Microsoft Excel provides the tools you need to set up, save, edit, and format as well as use formulas to assist you with calculations within your spreadsheet.

#### Microsoft Excel Intermediate

Where: Lynks Computer Lab

When: TBA

Time: 9:00 am to 3:00 pm

Cost: \$120

Instructor: Terry Siverson

Basic skills in Excel are preferred for this intermediate session. This course will equip you to work with

multiple workbooks and use formulas connected to other worksheets. Find out how to protect forms, use macros, and plot charts and graphs. Learn about filters, range names, and the difference between relative and absolute cell references.

#### Microsoft PowerPoint

Where: Lynks Computer Lab

When: TBA

Time: 9:00 am to 3:00 pm

Cost: \$120

Instructor: Terry Siverson

Use this unique program for making your slide presentations more engaging. See how easy it is to create slides and make them visually appealing. Learn what PowerPoint can do for you using templates, text, clipart, colour, and animation.

#### Microsoft Publisher

Where: Lynks Computer Lab

When: TBA

Time: 9:00 am to 3:00 pm

Cost: \$120

Instructor: Terry Siverson

This course will help you learn the features and abilities of Microsoft Publisher software. Learn how to apply a design or template and use the tools that make tasks easier for you. Use the design gallery or publication design options to make cards, calendars, posters, or ads.

#### Microsoft Word Basic

Where: Lynks Computer Lab

When: TBA

Time: 9:00 am to 3:00 pm

Cost: \$120

Instructor: Terry Siverson

This course will introduce the techniques applied in word processing using Microsoft Word. Understand how to create a new document, save it as a file, and do any necessary editing or formatting. Learn to work with blocks of text and tables and use bullets and numbering in your documents. See how the autotext feature and the format painter can make things easier for you.

### Microsoft Word Intermediate

Where: Lynks Computer Lab

When: TBA

Time: 9:00 am to 3:00 pm

Cost: \$120

Instructor: Terry Siverson

Once you are familiar with the basics of Microsoft Word you will be ready to tackle this intermediate Word session. Become knowledgeable with inserting fields and using section breaks in long documents. Apply and modify heading styles so you can easily generate a table of contents. Learn to create templates or build documents based on templates. Add headers and footers, create macros, and automatically format your documents using the AutoFormat feature.

**Call 403.854.2099 to register for any of the computer classes listed.**



### Microsoft Word Basic Drop In Sessions

Where: Lynks

Cost: No Charge

Instructor: Michelle Haag

These sessions will focus on using Word to create, edit, and save documents. Changing fonts and formatting text will also be covered. Learn more about using bullets or numbered lists. Call 403.854.2099 to set up an appointment.



# Warwick's Home Hardware

*Serving Hanna and area for 75+ years.*



# Beauti-Tone™ MC

**Monday - Saturday**

**9 am - 5 pm**

**Closed Sunday**

**416 - 2nd Ave.W Box 340, Hanna, AB T0J 1P0**

**Will Warwick Ph: 403.854.3266**





## Town of Hanna Programs and Services

Town of Hanna promotes a healthy, active community through quality programs, services, and events. The seasonal Program and Activity Guide is published in partnership with Lynks. This guide is available for pickup at town facilities or check online for information. Hanna citizens are very proud of the quality of life they have built. With support from the Town of Hanna, and other partner agencies, there are many programs and services available designed to get people active and involved.

There are many ways to have fun and be active in Hanna. The pages within this guide are a sample of the many programs in sports, fitness, arts, education, and culture that are available. Hanna believes in taking care of our folks and you will see that in any group or organization calling Hanna home.

### Programs and Services

Programs and Services for Children and Youth  
Page 32 to 33

Programs and Services for Families and Adults  
Page 33 to 35

Programs and Services for Seniors  
Page 36 to 37

Funding Programs  
Page 37

Town of Hanna Facilities  
Page 37 to 42

### Contact Information

Box 430  
302 2 Ave West, Hanna, AB. T0J 1P0  
403.854.4433

admin@hanna.ca  
hanna.ca

Office Hours - 8:30 am to 4:30 pm  
Monday to Friday  
Closed on holidays

|                   |              |
|-------------------|--------------|
| Centennial Place  | 403.854.4700 |
| Pool (seasonal)   | 403.854.3983 |
| Arena (seasonal)  | 403.854.4177 |
| Facility Bookings | 403.854.4433 |





### Community Services

The Mission of the Town of Hanna's Community Services Department is to promote a quality lifestyle for all citizens of the community.

In an effort to achieve this, the department serves several functions:

- Facilitation of recreational and cultural programs and facilities
- Development, operation, and maintenance of open spaces and parks
- Coordination of Family and Community Support Services (F.C.S.S.)

### Family and Community Support Services

The purpose of Family and Community Support Services (F.C.S.S.) is to facilitate the development of preventative social programs and services that enhance, strengthen, and stabilize family life. F.C.S.S. promotes volunteerism and encourages cooperation and coordination of other agencies within the community. Programs are developed through direct input from the community.



### Programs and Services for Children and Youth

#### Dances

The Hanna and District Youth Club sponsors youth dances, volunteer to chaperone and your child attends for free!

#### HIGH FIVE®

The Town of Hanna has embraced HIGH FIVE®, Canada's quality standard for children's recreation and sport to the community. HIGH FIVE® training provides our Recreation Program staff with knowledge of the principles of healthy child development so your child's experience is positive within a quality program. HIGH FIVE helps to ensure the town continues to provide "activities and environments where children feel safe, welcome, competent, connected, empowered, and special." [www.highfive.org](http://www.highfive.org)



#### Leader-in-Training Program (LIT)

The Town of Hanna is proud to provide a volunteer leadership opportunity for youth (14+). Valuable experience and knowledge will be gained in a supervised program setting working with children, as well as being provided First Aid and HIGH FIVE® training. The documented hours may be eligible for high school credits as well. We look forward to additional hands on board and offering valuable leadership skills to the LIT participants.

### Summer Program

Make your summer vacation "Epic" by attending Epic Adventures, a fun filled day camp for children aged 5 to 12 years with new and exciting activities. In spring, a brochure of these fun filled summer camps and sessions will be available, promising new opportunities for your child to learn and discover under the supervision of experienced leaders who are trained in HIGH FIVE ® and First Aid.

### Swimming Lessons

Offered every spring, beginning in June. The pool opens for the season in May and closes the end of August. Register online, visit [hanna.ca/pool](http://hanna.ca/pool) for more information.



### Youth Recreation

Offered every school day, youth 12 years and up are welcome to drop into Centennial Place for activities in the Canalta Field House. Pass Holders are permitted at no charge. All others are required to pay a drop in fee. Drop in operates to coincide with the school year.

### Youth Club

The Hanna and District Youth Club has been part of our community for over 30 years providing healthy activities and opportunities for youth. This group of adult and youth members is recognized for running monthly movies, youth dances, and special events. New members and ideas always welcome!

### Programs and Services for Families and Adults

#### Adult Recreation

Basketball and Pickleball can be enjoyed at no charge to Platinum, Gold, and Silver Access Pass Holders of Centennial Place. Drop ins are welcome for the daily rate. Activities run Monday to Thursday, 7:00 pm to 9:00 pm. Visit [hanna.ca/events](http://hanna.ca/events) for schedule.



LIVE WELL WITH

**PHARMASAVE®**

**Harvest Sky**

Heather Brown Pharmacist/Owner

1A 609 2<sup>nd</sup> Ave West  
Hanna, AB T0J 1P0  
Phone: 403-854-2655  
Fax: 403-854-2428

### Canada Day Celebration

Be sure to watch for Canada Day event information available in June. The Town of Hanna and Hanna F.C.S.S., with the financial support of the Government of Canada through the 'Celebrate Canada' grant, organize a day long party on July 1st which includes games and activities, FREE food and beverages, and outstanding entertainment. A spectacular fireworks display is always a part of the festivities. Please watch [hanna.ca](http://hanna.ca) for details.



### Child and Family Services Authority

Working cooperatively with the Town of Hanna, CFSA offers information and support for Foster Care, Child Protection Services, and Family Violence Protection and ensures that children and families have reasonable access to quality services. Drumheller District Office 403.823.1767.

### ChooseWell

The Town of Hanna is a proud ChooseWell participant. As part of the Government of Alberta's Healthy U campaign, Communities ChooseWell is an energizing healthy eating and active living initiative supported by Alberta Health and Wellness and managed by the Alberta Recreation and Parks Association. The goal of Communities ChooseWell is to recognize and empower Alberta communities to offer innovative programming, promotion, participation, and community partnerships towards achieving a healthier Alberta.

### Community Events Promotion

Are you a volunteer, trying to let people know about your event or not-for-profit activity? Let the Town Office know and we can help you get the word out! As a service to Hanna residents, businesses, and visitors, your not for profit community event can be included in the community event calendar which is used by the following:

Drumheller FM Radio  
The Coffee Break  
Travel Alberta  
TV screen Kiosks  
[hanna.ca](http://hanna.ca) Community Calendar

Email your poster or event information to [admin@hanna.ca](mailto:admin@hanna.ca) or drop it off at the Town Office.

### Family Resource Program

Family Resource Program has staff located at JC Charyk School to provide services for individuals, children, and families to encourage, promote, and enhance social and emotional well-being.

The Family Resource Program can be reached at 403.854.3642 Ext. 6103 and 6141.



### Family Resource Network

Contact: McMan Central

Phone Number: 1.877.994.5465 or 403.820.3573

Family Resource Network (FRN) Services are available for all Albertans with children aged 0 – 18. FRN believes that as long as a child is safe, they can achieve their greatest potential within their family unit. FRN educates parents and caregivers about child development, provides social supports, and offers coping and problem-solving skills in order to build resiliency and success within families and communities.

Services Include:

- Early Childhood Development
- Family Support
- Child and Youth Development
- Home Visitation
- Parent Education

### Prairie Sky Subsidized Therapy Program

Support is provided through Hanna Ag Society, Hanna F.C.S.S, Special Areas, and Starland County in cooperation with Lynks to provide this service locally.

This program provides professional therapeutic services for individuals, couples, and families. Subsidy support is based upon income levels on a sliding fee scale.

Help is available.

Contact Anchor Psychology at 403.334.9599 or Rapid Access Counselling at 403.233.2360.

### Hanna Front Row Centre

Hanna's Community Arts Council is dedicated to bringing a variety of entertainment and arts experiences to our community. For more information on their concert series, visit their Facebook page at [facebook.com/frontrowhanna](https://facebook.com/frontrowhanna).

### Healthy Families

This home visitation program which supports new parents is funded in part by Hanna F.C.S.S. To access support for this program contact 1.866.556.4122.

### Community Showcase

The Town of Hanna coordinates Spring and Fall gatherings to help community sports, leisure, and service clubs promote and conduct registration for their programs.

### Volunteer Appreciation

Hanna has always taken pride in having a very strong and involved community. Many of the programs and activities offered in the community would not be available if it weren't for the many hours of time, commitment, and expertise of volunteers. Each spring, the Town of Hanna, together with partners, hosts events to recognize our volunteers! These are always well attended and appreciated.



### Welcome to Hanna

New to Hanna? Be sure to drop by the Town Office or Lynks to pick up your Welcome to Hanna information package. It is full of information that will prove to be a valuable resource as you connect and become involved with Hanna organizations, programs, and services.



### Programs and Services for Seniors

Seniors and older adults in our community are active, vibrant, and engaged in a variety of recreational, cultural, and service programs. Watch for special events and programs held throughout the year.

#### Drive Happiness

Town of Hanna is partnering with Drive Happiness to match volunteer drivers with seniors in need of rides. Visit [hanna.ca/transportation](http://hanna.ca/transportation) for more information on becoming a volunteer or requesting a ride.

Contact Lynks at 403.854.2099 for assistance with signing up as a rider or a driver.

#### Handi-Van Rental

Town of Hanna maintains a handi-van equipped to transport individuals with accessibility issues who cannot use regular transportation with dignity due to a disability. Contact the Town Office for booking and details.

#### Hanna Cares

Can you help others? Yard care, pet care, medical appointments?  
Do you need assistance? Friendly conversation?  
Errands?

#### Mayor's Garden Party

During Seniors' week every June, the Mayor hosts the Mayor's Garden Party offering entertainment, hot lunch, and refreshments in honour of, and with Hanna's Seniors. This special day is compliments of the Town of Hanna and Hanna F.C.S.S.



#### Pickleball

Hanna F.C.S.S. proudly provides FREE Pickleball play at Centennial Place from September to April, Tuesdays to Thursdays 10:00 am to 12:00 pm. Additional times include Mondays and Wednesdays, 7:00 pm to 9:00 pm. Regular fees apply. Summer Outdoor Pickleball continues at the Tennis Courts! Call Centennial Place or Town Office for more information or join Hanna Pickleball Group on Facebook.



### Can You Help?

Request are for:

- Curb side pickup & delivery
- Check-in phone calls
- Pet care
- More

Register:  
[hanna.ca/help](http://hanna.ca/help)  
(403) 854-4433

## Hanna Cares



### Seniors' Week

Town of Hanna and F.C.S.S. coordinate the calendar of events, promoting Seniors' Week during the first week in June.

### Snow Angel Program

Snow Angels are anonymous samaritans who offer to clear winter sidewalks for those who are unable due to health or finances. There are always more sidewalks than angels. Please call the Community Services Coordinator if you are able to help.

## Funding Programs

Guidelines and application forms for each of the Town's funding programs can be found on the Town of Hanna website at [hanna.ca/forms](http://hanna.ca/forms). Alternatively, forms can be picked up at the Town Office.

### Hanna Community Youth Fund

This fund was established to provide financial support for children and families to participate in local social and art programs. Funding generally covers activities not covered by KidSport. Funds are provided through generous donations.

[www.hanna.ca/giving-receiving](http://www.hanna.ca/giving-receiving) for application form.



### CSB Grant

The Community Services Board (CSB) Grant is offered to provide financial assistance to local not for profit organizations for the provision of programs, special events, or activities which enhance Hanna's recreation and culture. Up to \$3000 is available each year.

### KidSport Hanna

The KidSport mission is to overcome the financial obstacles that prevent some young people from participating in sport programs. KidSport Hanna is affiliated with KidSport Alberta. Funds are provided through generous local donations.

[www.kidsportcanada.ca/alberta/hanna](http://www.kidsportcanada.ca/alberta/hanna) to apply.

### Provincial Hosting Grant

This grant is provided to support the hosting of provincial events within the Town of Hanna. Up to \$1000 towards the rent of publicly owned facilities may be approved.

### Fred and Freda Geuder Educational Bursary

This bursary is for students attending post-secondary education. All students are encouraged to apply, even if they have submitted previously. The deadline for applications is September 1 each year.

2023 bursary winners were Kennedy (Maddison) Mackinnon, Veronica Pedersen, and Madison Pitman.

## Facilities

For information, rates, or availability of any of the following Town of Hanna facilities, please contact the Town Office at 403.854.4433.

### Airport

Used primarily by private aircraft owners, the 3500 foot runway is capable of handling general aviation needs as well as light commercial air firms and charter operations. The terminal, with washrooms and a rest area, are available for rent.

## Town of Hanna Facilities

### Arena and Curling

501 - 3rd Street West

The Hanna Agri-Sports Complex houses both the Skating and Curling Arena's. The complex shares common services with other facilities making it beneficial for hosting larger events. The Skating Arena is suitable for hosting hockey games and tournaments with its regulation ice surface, figure skating, public skating, horse and cattle shows, rodeo, and many other events.

Advertising space is available in both the Skating Arena and the Curling Arena. An array of options are available including ice advertising, wall signs, and the supply of propane for the re-surfacer. Pricing ranges from \$275 to \$2200/year. Advertising in the Skating Arena can be arranged through the Town Office and in the Curling Arena through the Curling Club.

The Bill Matheson Memorial Curling Arena is home to the Hanna Curling Club in the winter months and is also available for rent in the summer months. Summer activities include: Hospital Auxiliary Rummage Sale, Teen Fair, Antique Gun Show and Sale, and Dances.

The facility is equipped with a lower level lobby complete with lockers, concession, washrooms, and viewing as well as a large upper level lounge and viewing area. The six sheet artificial ice has a history of having consistent ice for competitive curling.



### Outdoor Rink & Crokicurl

The Outdoor Rink adjacent to the Arena, and Crokicurl located north of the Community Centre provide outdoor recreation opportunities each winter. They are open seasonally as the weather allows and are free to use.

The needed equipment and rules of play are available at the Crokicurl rink.



### Ball Diamonds

Six ball diamonds are available in Hanna and are suitable for all types of ball. These diamonds serve Hanna Minor Ball and the Adult Slo-Pitch League, and are also available for group function rentals. A playground is provided for younger children, as well as a concession and washrooms at the Triplex facility.

- Robert Rowden Diamond - Corner of Fox Lake Trail and Palliser Trail
- Wes James Diamond and Earl Ness Diamond - 501 - 4th Ave. East, near the museum
- Triplex - three diamonds including the Kevin Sheehan and Leonard Harrison Diamonds, located just off 12th Ave. N.



### Soccer Fields

Two full sized soccer pitches are located adjacent to the Triplex Ball Diamonds and the Golf Course. The two pitches are separated by a berm which serves as a spectator viewing area.

The soccer pitches are available for bookings. Contact the Town Office.



### Swimming Pool

Hanna's outdoor heated swimming pool and waterslide offers public swimming, regular swimming lessons, aqua-fit, lane swim, and more. The pool is open from the May long weekend until the end of August. Phone 403.854.3983.

Visit [hanna.ca/pool](http://hanna.ca/pool) for schedules and more info.

### Spray Park

408 3rd Ave W

Located south of the Hanna Pool and Waterslide, the Spray Park is an outdoor accessible space for residents of all ages to enjoy at no cost when visiting the nearby park and playground. The splash pad is surrounded by rubberized flooring connecting to the adjacent washrooms and outdoor shower. Colourful water features provide fun for all ages. When not in use, the water features become dormant, but when someone wants to play, the features are activated with the touch of a hand.

Construction of the Hanna Spray Park was a combined effort between a committee of dedicated resident volunteers, the Town of Hanna, Special Areas #2, and the Province of Alberta (Community Facility Enhancement Program).





## Town of Hanna Facilities

### Racquet Sports Courts

Our newly refinished tennis courts are located next to the golf course. Nets and lines for both Tennis and Pickleball are available. Free to use, no bookings required.

### Centennial Place

501 B - 3rd Street West

Centennial Place is a hub of activity for all ages. Both programmed and drop in activities are offered within the space which consists of the Heartland Generation Welcome Hub, Canalta Fieldhouse, two dance studios, Edie May Duff Studio and Studio One, a fitness room, Hi-Way 9 Centre of Excellence pre-school room, and the combined use Chinook Financial music/youth room. Many community organizations operate their programs in Centennial Place including the Hanna Dance Association, Kiddies Korner Playschool, Youth Club, and Community Band. The facility is also available for private rentals.

Open (free) use of the Cervus Equipment walking track is:

Weekdays 9:00 am to 9:00 pm

Saturdays 1:00 pm to 8:00 pm

Sundays 1:00 pm to 6:00 pm

Holidays Hours may vary

Pass holders enjoy extended hours with their access card.

Platinum Access - 24/7 access to the Fitness Centre, Walking Track, and Field House, plus Lane Swim, Public Swim, and aqua-fit at the swimming pool during scheduled time.

Gold Access - 24/7 access to the Fitness Center, Walking Track, and Field House.



Silver Access - 7:00 am to 11:00 pm weekday access to the Walking Track and Field House.

1:00 pm to 10:00 pm weekend access to the Walking Track and Field House. (see rates on next page)

Bronze Access - Access to the Field House and Walking Track during regular operating hours.

Scheduled Use and Open Time - Each room of Centennial Place is booked by the various users and lease holders. Some rooms or spaces within the facility are open for rental during specific periods of time.

Visit [hanna.ca/events](http://hanna.ca/events) to see "This Week at Centennial Place" to see what's scheduled!



## L.R. WEBB CHARTERED PROFESSIONAL ACCOUNTANT

**LEILA WEBB, CPA, CA**

Phone: 403.854.4045 Fax: 403.854.4660  
106 2nd Ave West, Hanna, AB.

### 2025 RATES \*

\*subject to policy

#### Drop in Admission

|   |      |
|---|------|
| Youth (6-17 years)  | \$3  |
| Adult (18-64 years)   | \$7  |
| Seniors (65+ years)   | \$6  |
| Family  | \$15 |
| (must include one adult and the children must be from the adult's family) |      |
| Fitness Centre  | \$12 |

#### Annual Pass (Bronze Access)

|         |             |
|---------|-------------|
| Youth   | \$240       |
| Adult   | \$360 + GST |
| Seniors | \$300 + GST |
| Family  | \$480 + GST |

#### Annual Pass (Silver Access)

|         |             |
|---------|-------------|
| Adult   | \$385 + GST |
| Seniors | \$325 + GST |
| Family  | \$500 + GST |

#### Punch Cards (12 admissions for price of 10: Includes GST where applicable)

|                |       |
|----------------|-------|
| Youth          | \$30  |
| Adult          | \$70  |
| Seniors        | \$60  |
| Fitness Centre | \$150 |

#### Annual Pass (Gold Access)

|         |             |
|---------|-------------|
| Adult   | \$605 + GST |
| Seniors | \$485 + GST |
| Couple  | \$970 + GST |

#### Annual Pass (Platinum Access)

|         |              |
|---------|--------------|
| Adult   | \$660 + GST  |
| Seniors | \$545 + GST  |
| Couple  | \$1090 + GST |

### Canalta Fieldhouse

This full sized regulation court for basketball and volleyball also offers cross court space for badminton and volleyball. This space is suitable for recreational sport use, group exercise classes, and physical activities for all ages. The Field House may be rented for private functions.

### Chinook Financial Music/Youth Room

This space is suitable for band, chorus groups, musical jam sessions, youth activities, after school care programs, summer youth programs, or small groups. The Hanna and District Community Band practices regularly and programs are frequently offered for youth. The room is also rented for personal gatherings, such as birthday parties.

### Cervus Equipment Walking Track

Sport flooring covers this 2500 sq. ft. track, designed for walking and jogging. Ten laps on the outside of the track is one kilometer.



### Dance Studios

Located on the second floor in Centennial Place, Hanna is proud to offer space for the very active Hanna Dance Association. Students of all ages enjoy all disciplines of dance, offered by the Hanna Dance Association. Studio One boasts 975 sq. ft. while the Edie May Duff Dance Studio is 740 sq. ft. offering ample space for not only dance classes but also yoga, tai chi, and other low impact exercise or stretching.

### Heartland Generation Welcome Hub

This open space welcomes you to Centennial Place and can be utilized in conjunction with other rentals to host a sign in table or refreshments area.

### Hi-Way 9 Centre of Excellence Pre-School Room

Occupied by Kiddies Korner Playschool, this space was designed completely for pre-school age children.

### Community Centre

503 5th Ave. West

This all purpose facility can accommodate small or large gatherings of people. Weddings, meetings, stage productions, dances, and youth activities are all held within this building. The seating capacity with chairs and tables is 433 people.

- \* Weekend bookings and a wedding rate include use of the facility until either noon or 3:00 pm if available.
- \* Facility rentals where alcohol is served are required to provide liability insurance coverage for their event.



### Hanna Fitness Center

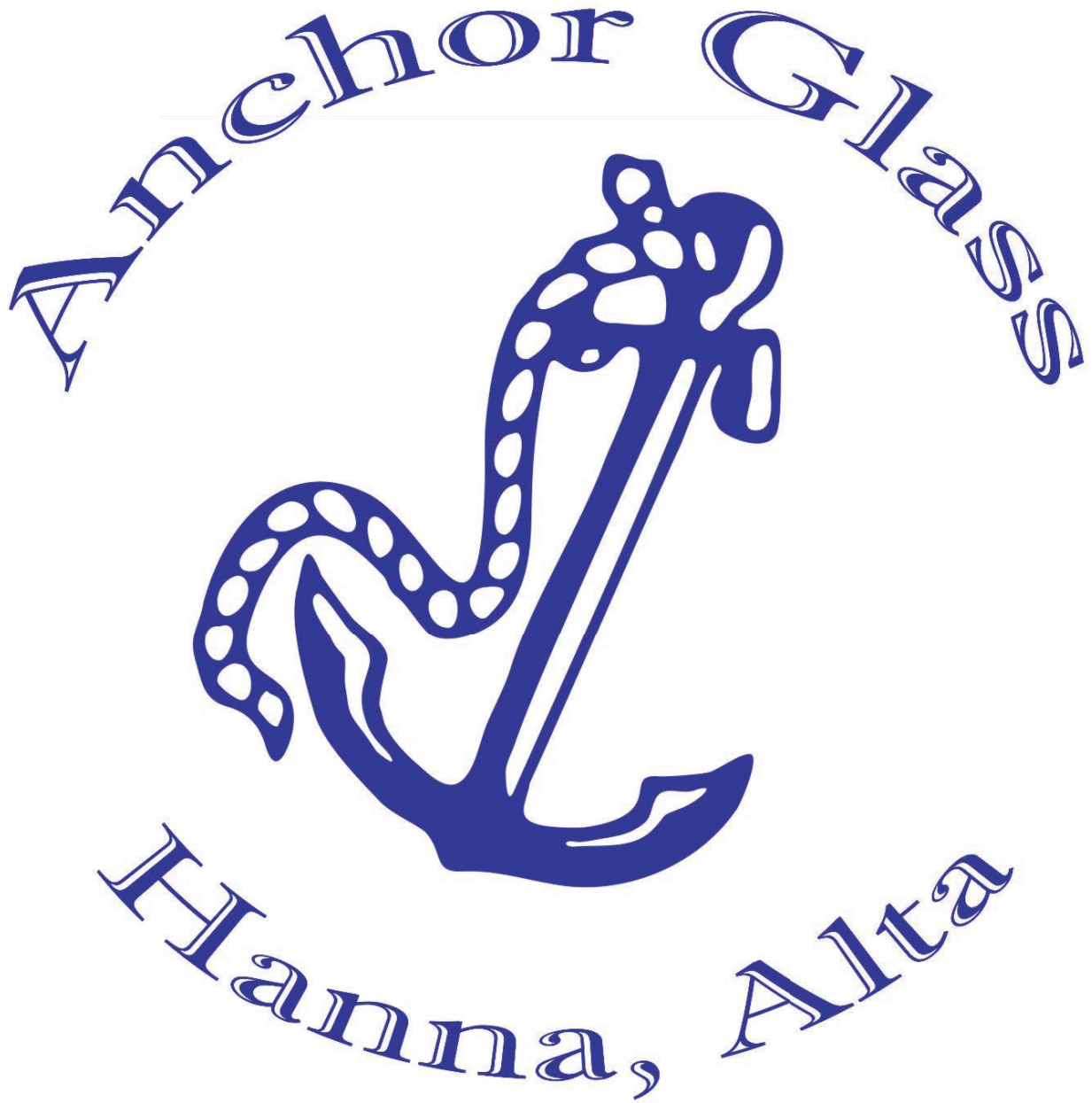
501 B - 3rd Street West

The Hanna Fitness Center is operated by the Town of Hanna.

Fitness Center is open to everyone 16 years of age and older.

The Center features:

- 800 sq. ft. dedicated to fitness equipment
- 24/7 card access
- Change room and shower facility



**Automotive-Residential-Commercial-Locksmith**

**24 Hour Emergency Service 403-854-8595**

**114 1 Ave W**

**403-854-4414**

**[www.anchorglass.ab.ca](http://www.anchorglass.ab.ca)**



## BIG COUNTRY PRIMARY CARE NETWORK

The physicians of the Hanna Medical Clinic belong to the Big Country Primary Care Network. This network provides professional staff in the medical clinic to assist patients to achieve their health and wellness goals.

### **PCN NURSES**

Work closely with the physicians in the clinic to provide health and lifestyle advice for patients with complex care needs. There is an RN and LPN on staff and they can provide assistance for patients to manage chronic diseases or set health and wellness goals. Foot care is also provided by referral. Other than foot care no referral is needed and people can call the clinic to book an appointment at 403-854-3351.

### **MENTAL HEALTH THERAPIST**

Works with patients to optimize their mental health and overall wellbeing. A referral from the physician is needed to book an appointment with the mental health therapist.

### **COMMUNITY LIAISON COORDINATOR**

Offers in person appointments as well as community group programs to support seniors to continue to live independently in our community. In person appointments include assistance with strength and balance, healthy living, caregiver support, and reducing social isolation. No referral needed.

### **CAREGIVER SUPPORT COFFEE GROUP**

3rd Wednesday of every month at the Hanna Medical Clinic from 1:00 pm - 2:00 pm. A safe and welcoming space to share challenges and successes for those in a caregiver role.

Everyone welcome.

Please call Kim at 403-321-4727 for more information or to book an in person appointment.





[hannalibrary.ca](http://hannalibrary.ca)

403.854.3865

#### HOURS

Monday 10 - 4 Tuesday 10 - 6 Wednesday 10 - 4  
Thursday 10 - 4 Friday 10 - 4

#### CLOSED

Weekends & Statutory Holidays

\*Hours are subject to change.

Visit [hannalibrary.ca](http://hannalibrary.ca) or our Facebook page at [facebook.com/HannaLibrary](https://facebook.com/HannaLibrary) for the most up-to-date information.

#### ANNUAL MEMBERSHIP

Annual library memberships are FREE to residents of Hanna, Special Areas 2, and Special Areas 3.

#### OVERDUE FINES

Hanna Library Materials: \$0.10 per item, per day.  
Interlibrary Loans & Special Orders: \$0.25 per day.

#### MEETING/PROGRAM SPACE

Is your organization looking for meeting space? Are you needing to fax, print, photocopy, or laminate, or don't know how to use a computer? Don't have internet access at home? Do you like to read?

Well, in that case the library has you covered! Space is available to individuals, local services, groups, clubs, and businesses. The space is booked on a first come/first served basis and can be booked by phoning the library. Space bookings are FREE for non-profit organizations.

#### FREE AT THE LIBRARY

- Wi-Fi
- Computer use
- Microsoft Office, video games, DVD's, audiobooks, and more!

#### FREE WITH YOUR MEMBERSHIP

Through our participation in Marigold Library System, our library is a single point of access to millions of books, audiobooks, eBooks, DVD's, events, and more.



Marigold is a partnership of The Regional Automation Consortium (TRAC) which provides access to over 170 libraries with holdings of nearly three million books, DVDs, and other materials.

#### PHOTOCOPY/PRINT/LAMINATE

Black and white - \$0.50/side  
Colour printing - \$1.50/side  
Full page colour printing - \$2.00/side  
Laminating - \$2.00/sheet  
Fax (outgoing) - \$1.00 first page, \$0.50/additional page

#### E-RESOURCES

Did you know the library can help improve your grades at school using your personal device? Or that you get FREE business & computer training with your library card?

The library can assist with everything from small engine repair, accessing consumer reports to tracing your family genealogy. You also get FREE music downloads and FREE streaming movies. We have great eBooks too!

#### PROGRAMS

##### Tot & Me Book Club

The Hanna Municipal Library partners with the Family Resource Networks Tot & Me playgroup bi-weekly. A librarian will bring along a book to read, with extra copies for families to take home to borrow, returning to the library or the next book club day. Tot & Me is a free program provided by the Family Resource Network and the Town of Hanna.

### TD Summer Reading Club

Our TD Summer Reading Club is Canada's largest bilingual summer reading program for kids of all ages, all interests, and all abilities.



Reading fun for kids,  
from Canada's  
public libraries

### 1,000 Books Before Kindergarten

Ages 0-5 are invited to chug along our reading railroad all the way to school! For every 100 books read, a prize is earned.

### Monthly Book Club

Join us for our monthly book club discussion on the second Thursday of each month at 2pm. The book of the month is available at the library. Can't make it to the book club? That's okay! Grab a copy and read along with us at home.

The library offers a range of free programs for ages 0-100, and we are excited to be able to collaborate with many Community Partners!

Visit our website or give us a call to learn more about programs being offered.

### ALBERTA FOUNDATION FOR THE ARTS EXHIBITS

Since 1980, the Alberta Foundation for the Arts has supported a provincial Travelling Exhibition (TREX) program. The TREX program strives to ensure every Albertan is provided with an opportunity to enjoy fully developed exhibitions.

The TREX program assists in making both the Alberta Foundation for the Arts extensive art collection and the work of contemporary artists available to all Albertans. For more information, visit:  
[www.affta.ab.ca/art-collection/TREX-Program](http://www.affta.ab.ca/art-collection/TREX-Program)

### IF YOU HAVE VISION DIFFICULTIES and LIBRARY SERVICES FOR PRINT DISABLED

The local library collection includes Large Print, Daisy Readers, Playaway's, and Audiobooks to better serve your needs. If we do not have a title you want, we can order the item in, free of charge with your library membership. You have access to thousands of audio titles through your computer, tablet, or mobile device.

CELA and NNELS are free services for library patrons with print disabilities. These services ensure equitable access to library materials. The Canadian Copyright Act defines "perceptual disabilities" as including: Learning Disability – an impairment relating to comprehension.

Physical Disability – the inability to hold or manipulate a book.

Visual Disability – severe or total impairment of sight or the inability to focus or move one's eyes.

Contact Hanna Library for more information or to register as a patron with print disabilities.

### TRAINING

Do you need help with your tablet or loading a library application onto your smartphone? Call the library today!

### LIBRARY OF THINGS COLLECTION

The Library of Things is a collection of unique items for loan - from children's educational kits to borrowing outdoor equipment such as snow shoes. The Library of Things collection gives library members opportunity to borrow unique items without financial investments, all you need is a library card!

The collection includes:

- Adult & Juvenile Snowshoes
- Urban Poling Fitness Poles
- Life Jackets
- Tennis Racquet's
- Blood Pressure Monitor
- Physical Literacy Kits
- Board Games
- Outdoor Exploration Kits & more!



Are you a parent with a new baby or young child under the age of six?

Are you committed to providing the best you can for your child?

Do you wish your child came with a manual?

Are you experiencing other challenges in your life while you try to raise your young family?

If you answered yes to any of these questions you may be eligible for the Healthy Families Home Visitation Program.

Our trained home visitors can meet with you in your home; assisting with parenting and child development strategies. We can also help you to manage other family needs and issues that impact your ability to be the parent you want to be. We will provide support and guidance in a non-judgmental way.

Our program is free.

Serving the communities of Hanna, Special Area No. 2, Delia, Morrin, Munson, Starland County, Acme, Carbon, Linden, Trochu, Torrington, Three Hills, Kneehill County, Drumheller, and surrounding rural communities.

For further information,  
please contact:  
Lisa Suave, Program Director  
403.586.0665







Investing in your future. Together.

Co-operators Life Insurance

**Your life is  
one of a kind,  
your life insurance  
should be, too!**

Talk to us today.



**Lorri McLeod**

*Financial Advisor and Mutual Fund Investment Specialist*  
4-218 Centre St, Hanna

**403-854-4109** [cooperators.ca/local/mcleod-agencies](https://cooperators.ca/local/mcleod-agencies)

Investments. Insurance. Advice.



McLeod Agencies Ltd | Co-operators Financial Investment Services Inc.

Co-operators® is a registered trademark of The Co-operators Group Limited. L0048 (05/22)

**Save the Date**  
**Lynks' 50th Anniversary Celebration**  
**April 18, 2026**



**Celebrating 50 fabulous years of Lynks at our glamorous Roaring 20s Gala!**  
**Step back in time to the era of flappers, jazz, and Gatsby-style glamour.**

**Enjoy an evening of dinner, dancing, raffles, and a silent auction as we toast our legacy - and look ahead to the next fifty years with purpose, passion, and partnerships.**







## Join Virtual QuitCore

AlbertaQuits group support program



Support when you need it most

Free, Virtual, convenient,  
personalized support to quit  
tobacco.

Virtual QuitCore is a **FREE** 6 session group support program led by a trained counsellor. Make new friends, share stories and tips, and celebrate milestones.

Call to discuss your options:

Martin McSween  
or  
Trina Macfarlane

Recovery Alberta  
Addiction & Mental Health  
403-823-7863



**AlbertaQuits.ca**

Call toll-free

**1-866-710-QUIT (7848)** to join the upcoming group in your area.



### COMMUNITY HEALTH SERVICES

#### Well Baby Clinics

Well baby immunization, growth, and development assessment clinics are held each Tuesday of the month and every first and third Thursday morning. To meet the needs of parents working outside the home, afternoon/evening clinics are being offered on the fourth Tuesday of the month from 1:00 pm to 7:30 pm. For an appointment call Hanna Public Health at 403.854.5236.

#### Prenatal Education Classes

Classes are open to pregnant women and their partners and/or labour support persons. To register or for information on dates, times, and location call the Hanna Public Health at 403.854.5236 or Toll Free 1.855.554.4774.

#### Sexual Health Program

One of the goals of the Sexual Health Program is to support the efforts of teachers in the delivery of life skills in their curriculum. We offer our support in a variety of ways, including direct classroom education on contraception and sexually transmitted infections, workshops for teachers on strategies to increase comfort and capacity in teaching human sexuality, information on current trends/issues and research in sexual health, and resource lending. (books, videos, etc.) Educators are also encouraged to access evidence based delivery methods and current lesson plans at: [teachingsexualhealth.ca](http://teachingsexualhealth.ca).

#### Children's Rehabilitation Services

Supporting the development of children and youth to participate in meaningful activities of daily life at home and in the community.

Services include:

- Occupational Therapy
- Speech Language Pathology
- Physiotherapy

403.854.5236 or 1.855.414.5272 (Central Intake)

#### Early Intervention Services

The Early Intervention Program (EIP) offers home-based and virtual support to families with children that have developmental delays or disabilities from birth to 5 years of age.

403.854.5236 or 1.855.414.5272 (Central Intake)

#### Oral Health Program

The Alberta Health Services Oral Health (Dental Health) Program provides a free fluoride varnish service for children 12 to 35 months of age. Fluoride varnish can prevent cavities and repair early damage to teeth. A dental health professional at the local Public Health office will provide fluoride varnish and answer questions from parents about dental health. Pamphlets with more information about the program are available at your local Public Health office.

#### Environmental Public Health

Environmental Public Health Services offers short seminars on all aspects of the program area upon request; including food safety, hand washing, indoor air quality, mold, and enteric diseases. Environmental Public Health also provides bacteriological and chemical water testing (for human consumption only).

#### Safe Food Handling

Operators of commercial food establishments are required to have provincially certified food handlers on staff. Businesses with six or more food handlers on the premises will need one provincially certified food handler on each shift. Those with five or less food handlers must employ at least one provincially certified food handler. Food handlers can obtain provincial certification through successful completion of an approved course.

For course information, dates, and to register for a course visit our website at [ahs.ca/eph](http://ahs.ca/eph)



## Community Health Services

### Public Health Nutrition

The Public Health Nutrition Program promotes healthy eating through education, capacity building, policy, and supports to healthy eating environments where Albertans live, learn, work, and play.

To connect with the Public Health Nutrition Program, please contact Karen Olafson, Registered Dietitian at 403.740.7292 or karen.olafson@ahs.ca

### Home Care Program

Supports people with medical needs so they can live in their own homes, lodges or group homes. Helps people of all ages who live at home and need medical support.

This service also assesses applications for long-term care, supportive living, and facility respite care. For more information call 403.854.5236 or 1.855.371.4122. (Continuing Care Access Line)

### Seniors Outreach Nurses

Provides non-urgent comprehensive mental health assessments for Seniors. Offers services to seniors by ruling out physiological factors, and provide care planning / behavior management strategies to clients in facility and in their homes.

For more information call 403.854.5276

### Addiction and Mental Health

Short-term therapy offered to adults who are experiencing a mental health concern.

Services offered:

Assessment, individual psychotherapy, and an option to attend groups in some locations.

For more information call 403.854.5276

**Centralized Intake: 888-594-0211**

## DRUMHELLER, HANNA, THREE HILLS & SURROUNDING AREA FAMILY RESOURCE NETWORK

The Family Resource Network supports families in our communities through **free** voluntary programs and services.

**Information & Referrals:** Sometimes it is hard to find the resources you are looking for. Self-refer to our Hub and someone on our team can help guide you in the right direction.

**In Home Supports:** One-on-one and familial support is available to families with children 0-18 years of age. Our workers will help you to reach your family's goals.

**Facilitation Groups:** Fun and engaging programs for families of all ages. These include early childhood education groups, youth programs, social connection opportunities, and parenting support programs.

**Contact us if you or anyone you know could benefit from:**

- ♥ Someone you can count on to be non-judgmental, friendly, and supportive for your and your family.
- ♥ A knowledgeable individual to support your child's development, and encouraging a happy, healthy home environment
- ♥ Access to confidential, respectful, and understanding support, alongside goal-creation and skill-building.

### CONTACT US TO LEARN MORE



1-403-820-3573



www.mcmancentral.ca



@drumhellerfrn



frndrumheller@mcmancentral.ca

**In partnership with:**



Wheatland County Counseling





Vision: Empowering children, youth, and their families to foster habits of mental and physical well-being by developing relationships and building upon the strengths of communities and schools.

The Mental Health Capacity Building (MHCb) in Schools Initiative works to promote positive mental health in children, youth, families, and support individuals in the community who interact with children and youth. Project REACH is one of many locally planned, coordinated, and implemented MHCb programs that operate across the province.

The MHCb initiative is funded by Alberta Health and led by Alberta Health Services Provincial Addiction and Mental Health.

Project REACH provides universal mental health promotion, early intervention, and prevention programming in schools throughout the Prairie Land Public School Division for children, youth, and families through collaboration with schools and community agencies.

### Programs and Services provided by Project REACH

Building mental health capacity through:

- In-school and after-school groups, programs, and activities
- Classroom and community presentations
- Videoconferenced programs and activities
- Professional development of school staff and community agencies
- Family information sessions and newsletters
- Support for children, youth, and families
- Resource sharing
- Summer and out of school programming

Please note we **DO NOT** provide individual counselling services.

Andrea Olsen  
Program Manager, Project REACH  
Mental Health Capacity Building in  
Schools Initiative  
Prairie Land School Division  
Cell: 403.857.9919  
Email: andrea.olsen@plrd.ab.ca

**General Email: reach@plrd.ab.ca**

**Website: reach.plrd.ab.ca**



Katie Suntjens  
Project REACH Wellness Worker  
Cell: 403.820.0819  
Email: katie.suntjens@plrd.ab.ca

Kris Thulien  
Project REACH Wellness Worker  
Cell: 403.575.5231  
Email: kris.thulien@plrd.ab.ca

Rhonda Halter  
Project REACH Wellness Worker  
Cell: 403.857.9217  
Email: rhonda.halter@plrd.ab.ca

Jennifer Palmer  
Project REACH Wellness Worker  
Cell: 403.854.8682  
Email: jennifer.palmer@plrd.ab.ca

Courtney Day  
Project REACH Wellness Worker  
Cell: 403.857.9084  
Email: courtney.day@plrd.ab.ca

Tenielle Golby  
Project REACH Wellness Worker  
Cell: 403.857.9109  
Email: tenielle.golby@plrd.ab.ca



**@REACHPLRD25**

## Community Service Groups

### AA Meetings

Redeemer Lutheran Church  
Mondays 7:00 PM

Call Mike 403.854.0599  
for more information.

### Addiction Services - Drumheller/Hanna

Addiction counselling/support for those concerned about the use of substance and/or gambling for themselves or others they care about.

To schedule an appointment:

Hanna 403.854.5276 or Drumheller 403.820.7863.

**24 Hour Help Line**

**1.866.332.2322**

**Tobacco Help Line**

**1.866.710.7848**



### Around Hanna

Home to local organizations, and agencies.

Around Hanna is located at  
[lynkscommunity.com](http://lynkscommunity.com)

For more information call  
Michelle at 403.854.2099 Ext. 207.

### Big Country Housing Authority

Operates affordable Government subsidized senior and community housing projects in Hanna and Cereal.

For more information contact Angela McGillion at:

Phone: 403.854.3936

Email: [bcha@telusplanet.net](mailto:bcha@telusplanet.net)

### Big Country Riding and Roping Club



Location: Five miles east of Hanna on Highway 9 and two miles south on Highway 36.

For more information phone Heather at 403.854.0153.

### Big Country Waste Management Commission Multi-Material Recycling Depot

Accepting cardboard, newsprint, compost, magazines, office paper, mixed paper, paint, tires, scrap metal, insecticide jugs, grain bags, twine, computers, TV's, and all types of batteries. Providing assistance in setting up school, office, and home recycling activities. For more information contact: Sean at 403.857.9300.



Clothes for the entire family, shoes, housewares, books, toys, and so much more!

**808 Center Street, Hanna 403.854.3772**  
(South of Hospital, in basement of the United Church)  
**Open Tues, Wed, Fri, and Sat 11 am to 4 pm**

### CENTRAL ALBERTA WOMEN'S EMERGENCY SHELTER

**1.888.346.5643**

[cawes.com](http://cawes.com)

**ANCHOR**  
PSYCHOLOGY INC



**Brittany Owens MC, Registered Psychologist**

403.334.9599 or [bowens@anchorpsych.ca](mailto:bowens@anchorpsych.ca)

**Kim Olsen RSW, MSW**

403.664.9308 or [kolsen@anchorpsych.ca](mailto:kolsen@anchorpsych.ca)

**Becky Viste RSW, MSW**

403.854.5904 or [bviste@anchorpsych.ca](mailto:bviste@anchorpsych.ca)

Provides individual, couples, and family counselling. Clinicians are trained in various modalities including Eye Movement Desensitization and Reprocessing (EMDR), Accelerated Resolution Therapy (ART), Somatic Experiencing (SE), Internal Family Systems (IFS), and Dialectical Behaviour Therapy (DBT). *Subsidies may be available based on eligibility requirements.*

## Community Service Groups

### Delia and District Community Centre

Let us help with your meeting and event needs!

Main hall capacity 299 featuring:

- Fully equipped modern kitchen/bar facilities
- Stage for live performances
- Superior sound system, projection screens, and dance floor
- Smaller meeting rooms. Seats 20-30 comfortably.

For rates and information: [deliacommunityhall.com](http://deliacommunityhall.com) or email [deliacommunityhall@gmail.com](mailto:deliacommunityhall@gmail.com)

### Elks of Canada

A national charitable organization promoting and supporting community needs through volunteer efforts of local lodges.

Enquire about membership today.

Phone Vern Thuroo (H) 403.854.5853

(C) 403.820.0650

Hanna Elks Lodge No. 451

P.O. Box 117, Hanna, AB, T0J 1P0



**ELKS OF  
CANADA**

### Family Resource Program

Family Resource Workers provide one-on-one, in-school support for students who need assistance with emotional, behavioural, and/or social skill development, developing healthy coping strategies, self esteem, support for grief and loss, healthy family functioning, etc. Family resource workers assist students and their families with problems affecting family functioning, as well as accessing information and referrals to community and support services. To access a worker please call the numbers listed below, or contact your school office.

Family Resource Program 403-854-3642 Ext 6103

### Family Violence Info Line

Available to provide help and information, toll-free in Alberta  
24 hours a day.

CALL OR TEXT  
**310.1818.**



"Bringing professional  
performing arts to Hanna"  
Yearly Concert Series

Contact Gwen at  
403.854.6418 or  
Peggy at  
403.854.0068

Email [frontrow@hotmail.ca](mailto:frontrow@hotmail.ca)  
Find us on Facebook



Girl Guides of Canada offer friendship, fun, challenge, and adventure to all girls.

This group challenges girls to reach their potential and empowers them to give leadership and service as responsible citizens of the world. Find more information at [girlguides.ca](http://girlguides.ca).

### Hanna Agricultural Society

Come and Get Involved!

Contact Vern at 403.820.0650 or  
Peggy at 403.854.0068 for more  
information.

### HANNA & DISTRICT CHAMBER OF COMMERCE

EMAIL [HannaDistrictChamber@outlook.com](mailto:HannaDistrictChamber@outlook.com)

CONTACT NUMBER - CALL/TEXT (403) 854-4004

WEBSITE [www.HannaChamber.ca](http://www.HannaChamber.ca)

FACEBOOK [FaceBook.com/HannaDistrictChamber](https://www.facebook.com/HannaDistrictChamber)

Contact us to learn more.



### Hanna and District Community Band

A volunteer based organization whose goal is to promote instrumental music in our community and surrounding area for both students and adults.

Rehearsals: Thursday evenings

For more information:  
Gwen Snell at 403.854.6418

### Hanna and District Historical Society

The Pioneer Village...

complete and restored at the Hanna Museum

Summer Hours: Tues-Sat 10:00 am to 6:00 pm

Winter Hours: By appointment only

Admission: \$5/person

Phone: 403.854.4244

Email: [hannamuseum1912@gmail.com](mailto:hannamuseum1912@gmail.com)

[hannamuseum.ca](http://hannamuseum.ca) Find us on Facebook: HannaMuseum



## Community Service Groups



### Hanna and District Youth Club

Hanna and District Youth Club provides an opportunity for youth to have meaningful engagement in our community. Contact Hanna FCSS/Community Services at 403-854-4433 or email [hannayouthclub@gmail.com](mailto:hannayouthclub@gmail.com) or [admin@hanna.ca](mailto:admin@hanna.ca) for more info.



### Hanna Continuing Care Recreation Therapy

**"Partners in Health"**

**For more information call  
403.854.5264.**



For more information email:  
[hannacurlingclub@gmail.com](mailto:hannacurlingclub@gmail.com)

For all ages and experience levels - try curling!

### *Hanna Dance Association*

Competitive Club offering Tap, Jazz, Ballet, Lyrical, Acro, Hip-Hop, Pointe, Contemporary, and Predance. Check availability on recreational and adult classes. Classes run September to April.

Email [hannadance.sec@gmail.com](mailto:hannadance.sec@gmail.com) for more information.



### Hanna FCSS

Hanna Family and Community Support Services philosophy is based on a belief that self-help contributes to a sense of integrity, self-worth, and independence. FCSS is a leader in preventative social support programs in Alberta. To learn more about FCSS in Hanna, visit [hanna.ca](http://hanna.ca).



302 2 Ave West | P (403)854-4433 | E [admin@hanna.ca](mailto:admin@hanna.ca) | [hanna.ca](http://hanna.ca)

### Hanna Figure Skating Club

A proud member of Skate Canada

Recreation and Test Stream skating lessons for ages three and up.

Lessons run from October to March each year. Canskate, STARskate, Power Skating, and Adult Canskate Programs.

For more information email [hannafsc@gmail.com](mailto:hannafsc@gmail.com)



### HANNA FOOD BANK

Main Floor Provincial Building  
Open Wednesdays 1:00 pm to 2:00 pm

For information call

**403.854.8501**

Cheques or grocery donations gratefully accepted.  
Thank You!

### Hanna Girls Fun Team Hockey

**Just Have Fun!**

Opportunity to play hockey and learn more about the game. For more information email [hannagirlshockey@gmail.com](mailto:hannagirlshockey@gmail.com)

### Hanna Golf and Country Club

The best deck in Town!



**HANNA**  
golf & country club

Public is welcome!

Phone: 403.854.3722

Email: [hannatee@hannagolf.ca](mailto:hannatee@hannagolf.ca)

[hannagolf.ca](http://hannagolf.ca)

### Hanna Gymnastics Club

**Location:** JC Charyk Hanna School

**Contact:** Lisa Bietelspacher

403.854.0528

*Our focus is on having FUN, promoting FITNESS, and developing FUNDAMENTALS.*

## Hanna Hospital Ladies Auxiliary

Funds raised through semi-annual rummage sales.

For more information  
contact Dolores Clow at 403.854.0546

## Hanna Indoor Rodeo Association



A not-for-profit organization and a proud supporter of all types of rodeo. An annual rodeo is held in September.

**[hannaprrodeo.com](http://hannaprrodeo.com)**



**Kin Canada**  
**Kinette Club**  
**of Hanna**

Join us at 6:30 pm on the first Wednesday of every month. Ages 18 and up.

Serving the community's greatest needs.  
Excellence, Pride, Integrity, Inclusiveness, Compassion.  
For more information call Angela at 403.857.9188.

## Hanna Lacrosse Association

THE FASTEST GAME ON TWO FEET!

SEASON RUNS  
APRIL - JUNE

[hannalacrosse@gmail.com](mailto:hannalacrosse@gmail.com)



## Hanna Minor Ball Association

Committed to encouraging, promoting, and administering the development and growth of amateur softball and baseball.

For more information contact  
[president@hannaball.ca](mailto:president@hannaball.ca)

## Hanna Minor Hockey Association

*"Dedicated to promoting, teaching, and developing hockey in Hanna and the surrounding area"*

To become involved please email  
[president@hannahockey.ca](mailto:president@hannahockey.ca)

## Hanna Minor Soccer

Outdoor soccer begins in late April.  
U5 - U19 Leagues available.

Contact Elizabeth at 403.854.8586

## Hanna Motocross Club

Come and see the action!

Motocross Track  
\*ATV Park south of Hanna\*

For more information call  
Steve at 403.854.6701 or  
Scott at 403.928.0181



## Hanna Rangeland 4-H Multi-Club

The Hanna Rangeland 4-H Multi-club offers a variety of projects. The club runs from October through June. 4-H members "Learn to do by doing" through project meetings, hands-on experience, public speaking, and fun!

Contact Kindra for more information at 403.321.1848.



## Hanna Seals Swim Club

Promoting the sport of competitive swimming through experienced, effective coaching, thereby developing self confidence, team spirit, and good sportsmanship.

Seals representative:  
Darla Mikkelsen 403.854.1446  
Email: [sealshanna@gmail.com](mailto:sealshanna@gmail.com)

## Community Service Groups

### Hanna Senior Circle

President: Ted  
Phone: 825.996.5417

For hall rentals call Char  
403.857.9739

### Hanna Walk-In Addiction Support *Walk-in Wednesdays*

When: Wednesdays from 12:30 pm to 3:00 pm  
Where: Upstairs, Provincial Building  
401 Centre Street, Hanna



### Protect a Pet!

Harvest Sky Animal Rescue is a group of volunteers protecting and helping animals in and around our community.

To learn more about adopting, surrendering an animal, donations, how to become a Foster Home, or to donate time at the Animal Rescue please phone 403.854.3700. Facility located at 321 - 3 Ave. E. [harvestskyrescue.ca](http://harvestskyrescue.ca)



### Hanna Volunteer Fire Department

*"Become part of the team"*

To become a volunteer call  
403.854.4433.



302 2 Ave West | P (403)854-4433 | E [admin@hanna.ca](mailto:admin@hanna.ca) | [hanna.ca](http://hanna.ca)

### Kiddies Korner Playschool

Kiddies Korner is a not-for-profit organization focusing on allowing children the opportunity to develop social interactions and increase emotional and physical development through supervised creative play.

For more information go to Around Hanna on [lynkscommunity.com](http://lynkscommunity.com) under "Supports" and check out our listing under the "children & youth" tab.

### Mental Health Help Line Help Line available 24 hours/7 days a week.

**Toll Free 1.877.303.2642**  
**[mymentalhealth.ca](http://mymentalhealth.ca)**

Province wide mental health assistance line for people experiencing emotional or psychiatric crisis.

### Narcotics Anonymous

Thursdays 8:00 PM  
Bethel Evangelical Missionary Church  
702 Centre Street Hanna

Meetings are open and we welcome anyone wanting support in a 12 step program.

Contact Dean 403.820.4050 for more information.



Royal Canadian Legion  
Branch 25 Hanna

224 - 2nd Ave West

Serving our Veterans and the community since 1933.

Hall rental available.  
Call 403.854.0553.

### Hanna Family Day Homes



Early Learning and Child Care Service provides child care in a home setting, where families may have access to government subsidies and affordability grants. We aid families with child placement services, referral services, subsidy applications, and much more. Our child care educators are trained professionals who offer daily program plans to support children's "whole" development and nutritional requirements. Educators receive mentoring and support, networking, and professional development opportunities.

For more information contact: Melanie Jensen, Director/Coordinator/Consultant, at 403.857.9729.

## Community Service Groups

Beavers - ages 5 to 7  
Cubs - ages 8 to 10  
Scouts - ages 11 to 14

Visit **scouts.ca**  
for more information.



Bringing culture and  
entertainment  
to Hanna

For more information contact  
Corinne at 403.857.8430 or  
James at 403.854.7121



### True North 24 Hour Crisis Line

Toll Free in Alberta: **1.877.934.6634**  
Counselling and Support.  
21 day emergency residential shelter for those  
fleeing domestic violence.



### Welcome to Hanna

The Town of Hanna is pleased to be working with  
Lynks to welcome new community members. To  
obtain your community information package,  
contact the Town of Hanna or Lynks.

302 2 Ave West | P (403)854-4433 | E [admin@hanna.ca](mailto:admin@hanna.ca) | [hanna.ca](http://hanna.ca)

# THANK YOU!

*Thank you to the Town of Hanna  
for making these community group  
promotions possible.*





## Churches

### Alliance Church

Pastor Walter Willford  
520 - 2nd Avenue West  
Phone: 403.854.4122  
hannaalliancechurch@gmail.com  
hannaalliance.com

Sunday Morning Worship - 10:30 am

Men's Breakfast

Last Saturday of Month - 8:00 am

Bible Study

Thursdays - 7:00 pm

### Bethel Evangelical Missionary Church

Pastor Dr. John Schaufele  
Church: 403.854.4245

Sunday School (during service)  
10:30 am

Sunday Morning Worship  
10:30 am

702 Centre Street  
bethelhanna.ca

facebook.com/BEMCHanna

### Delia Christian Fellowship Church

A Village Missions Church

Sundays.....10:30 am

Children's Church during the sermon.

Darren Goetz 778.256.6092

### First United Church

hannafirstunitedchurch.ca  
808 Centre Street, Hanna, AB  
Office: 403.854.3772  
hannafirst@gmail.com

Worship.....10:00 am

### New Life Community Fellowship

Pastors  
Brian & Debbie Cooper

Church: 403.660.6529

Morning Worship service.....10:30 am

Phone church for more information.

### Redeemer Lutheran Church

3rd St. West and Fox Lake Trail  
Main Office: 403.854.4607

Follow us on facebook

Hanna Redeemer Lutheran Church

Email: rlchannaoffice@gmail.com

Sunday Worship.....11:00 am

Holy Communion:

First, third, and Festival Sundays

### Seventh Day Adventist

Pastor Keith Samuel  
587.783.5809

801 Centre Street

Sabbath School.....10:30 am

Worship Service.....11:30 am

Services are held on Saturdays.

### St. George's Catholic Church

608-1st Street West  
Phone: 403.854.3281

Mass Times

Sundays.....9:00 am

Thursdays.....7:00 pm

Fridays.....10:00 am

### Youngstown Gospel Chapel

Phone: 403.779.3888

Prayer and Praise.....10:15 am

Worship and Sunday School.....11:00 am

Wednesday Prayer Meeting.....7:00 pm



## INDEX

|   |    |   |    |
|---|----|---|----|
| AA Meetings.....  | 54 | Elks of Canada .....                          | 55 |
| Addiction and Mental Health.....  | 52 | Environmental Public Health.....              | 51 |
| Addiction Services - Drumheller/Hanna .....                                     | 54 | ESL Intermediate Listening & Speaking.....    | 21 |
| Adult Literacy Program.....   | 10 | Facilities.....                               | 37 |
| Adult Upgrading .....   | 23 | Family Literacy Program.....                  | 11 |
| Alberta Basic Security Training .....   | 20 | Family Resource Program .....                 | 55 |
| Alberta Healthy Living Program .....  | 22 | Family Violence Info Line .....               | 55 |
| Anchor Psychology Ltd.....  | 54 | Food Handler Certificate .....                | 20 |
| Around Hanna .....  | 54 | Front Row Centre .....                        | 55 |
| Big Country Housing Authority.....  | 54 | Funding Programs.....                         | 37 |
| Big Country Primary Care Network.....   | 44 | Girl Guides of Canada.....                    | 55 |
| Big Country Riding and Roping Club.....   | 54 | Hanna & District Chamber of Commerce.....     | 55 |
| Big Country Waste Management Commission<br>Multi-Material Recycling Depot ..... | 54 | Hanna & District Community Band .....         | 55 |
| Business Link .....   | 21 | Hanna & District Historical Society.....      | 55 |
| BUSINESS .....  | 21 | Hanna & District Youth Club.....              | 56 |
| CAEC Readiness .....  | 23 | Hanna Agricultural Society.....               | 55 |
| Campus Alberta Central .....  | 19 | Hanna Continuing Care Recreation Therapy .... | 56 |
| Canadian Citizenship Test Preparation .....                                     | 21 | Hanna Curling Club .....                      | 56 |
| Career Services .....   | 7  | Hanna Dance Association.....                  | 56 |
| Center Street Thrift Store.....   | 54 | Hanna Family Day Homes .....                  | 58 |
| Central Alberta Women's Emergency Shelter...                                    | 54 | Hanna FCSS .....                              | 56 |
| Child Care Emergency First Aid.....   | 24 | Hanna Figure Skating Club.....                | 56 |
| Children's Rehabilitation Services.....   | 49 | Hanna Food Bank.....                          | 56 |
| Churches.....   | 60 | Hanna Girls Fun Team Hockey .....             | 56 |
| Community Futures Meridian.....   | 21 | Hanna Golf and Country Club.....              | 56 |
| COMMUNITY HEALTH SERVICES .....   | 51 | Hanna Gymnastics Club .....                   | 56 |
| Community Learning Program .....  | 9  | Hanna Hospital Ladies Auxiliary .....         | 57 |
| COMMUNITY SERVICE GROUPS.....   | 54 | Hanna Indoor Rodeo Association .....          | 57 |
| COMPUTER TRAINING .....   | 29 | Hanna Kinettes.....                           | 57 |
| Connecting Community.....   | 16 | Hanna Lacrosse Association .....              | 57 |
| Construction Safety Training (CSTS 2020).....                                   | 20 | Hanna Library .....                           | 45 |
| Conversation Café .....   | 21 | Hanna Minor Ball Association.....             | 57 |
| Delia and District Community Centre .....                                       | 55 | Hanna Minor Hockey Association .....          | 57 |
| Drop In Tech Help.....  | 29 | Hanna Minor Soccer .....                      | 57 |
| Early Intervention Services .....   | 51 | Hanna Motocross Club.....                     | 57 |
|   |    | Hanna Rangeland 4-H Multi-Club.....           | 57 |

## Index

|   |    |   |    |
|---|----|---|----|
| Hanna Seals Swim Club .....                   | 57 | Programs and Services for                 |    |
| Hanna Senior Circle .....                     | 58 | Children and Youth.....                   | 32 |
| Hanna Volunteer Fire Department .....         | 58 | Programs and Services for Seniors .....   | 36 |
| Hanna Walk-In Addiction Support.....          | 58 | Project REACH .....                       | 53 |
| Harvest Sky Animal Rescue .....               | 58 | ProServe Liquor Staff Training .....      | 20 |
| Harvest Sky Economic Development Corp.....    | 18 | Public Health Nutrition .....             | 52 |
| HEALTH AND WELLNESS .....                     | 22 | QuitCore.....                             | 22 |
| Healthy Families.....                         | 47 | Reaching Home Program .....               | 14 |
| Heart & Stroke Basic Life Support (BLS) ..... | 24 | Recovery College Courses.....             | 22 |
| Home Care Program .....                       | 52 | Red Cross Blended Standard First Aid..... | 25 |
| How to Register for a Course .....            | 5  | Red Cross Emergency First Aid.....        | 26 |
| IELTS & CELPIP Preparation .....              | 22 | Red Cross Re-Certification for            |    |
| IS ENGLISH YOUR SECOND LANGUAGE? .....        | 21 | Standard First Aid .....                  | 25 |
| Kiddies Korner Playschool.....                | 58 | Red Cross Standard First Aid .....        | 26 |
| Learn English.....                            | 22 | Royal Canadian Legion .....               | 58 |
| Local Loop.....                               | 13 | Safe Food Handling .....                  | 51 |
| LYNKS .....                                   | 2  | SAFETY .....                              | 24 |
| Mental Health Help Line .....                 | 58 | Scouts Canada .....                       | 59 |
| Microsoft Excel Basic .....                   | 29 | Seniors Outreach Nurses.....              | 52 |
| Microsoft Excel Intermediate .....            | 29 | Sexual Health Program.....                | 51 |
| Microsoft PowerPoint.....                     | 29 | Stage Hanna.....                          | 59 |
| Microsoft Publisher .....                     | 29 | TOWN OF HANNA.....                        | 31 |
| Microsoft Word Basic Drop In Sessions.....    | 30 | True North .....                          | 59 |
| Microsoft Word Basic .....                    | 29 | UP Skills for Work .....                  | 24 |
| Microsoft Word Intermediate .....             | 30 | Welcome to Hanna .....                    | 59 |
| Money Matters .....                           | 23 | Well Baby Clinics .....                   | 51 |
| Narcotics Anonymous .....                     | 58 |   |    |
| Non-Restricted Firearms Training .....        | 24 |   |    |
| ONLINE WORKPLACE SAFETY TRAINING .....        | 20 |   |    |
| Oral Health Program .....                     | 51 |   |    |
| PERSONAL INTEREST.....                        | 23 |   |    |
| Prenatal Education Classes .....              | 51 |   |    |
| Pre-Trades Math & Science .....               | 23 |   |    |
| Programs and Services for                     |    |   |    |
| Families and Adults .....                     | 33 |   |    |

# Program and Activity Guide

## Lynks

Located in the Provincial Building at 401 Centre Street

Box 1255, Hanna, AB, T0J 1P0

Phone: 403.854.2099

Fax: 403.854.4166

Email: [connect@lynkscommunity.com](mailto:connect@lynkscommunity.com)

[lynkscommunity.com](http://lynkscommunity.com)

Many thanks to the following agencies that have provided funding or support to Lynks and its programs:

- Advanced Education
- Alberta Assisted Living and Social Services
- Campus Alberta Central
- Community Foundation of Southeastern Alberta
- Community Futures Meridian
- Community Learning Network
- Harvest Sky Economic Development Corporation
- Healthy Aging Alberta
- Heartland Generation
- Norquest College
- Prairie Crocus Fund
- Prairie Land Public School Division
- Private Donors
- Rural Development Network
- Special Areas Administration
- Town of Hanna
- Volunteer Alberta
- Volunteer Connector
- West MET Community Grant



### Lynks

401 Centre Street, Hanna, AB, T0J 1P0  
Phone: 403.854.2099



### Town of Hanna

302-2 Ave West, Hanna, AB, T0J 1P0  
Phone: 403.854.4433