



WeHero Ukulele

Build a ukelele while learning about the importance of musical play to use across different musical therapy programs.

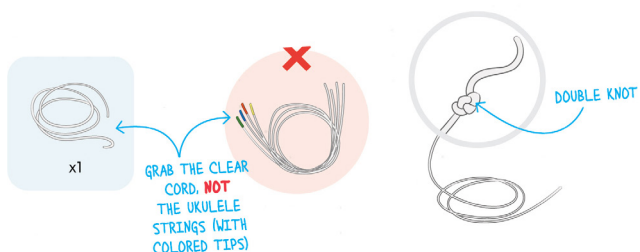


PART A

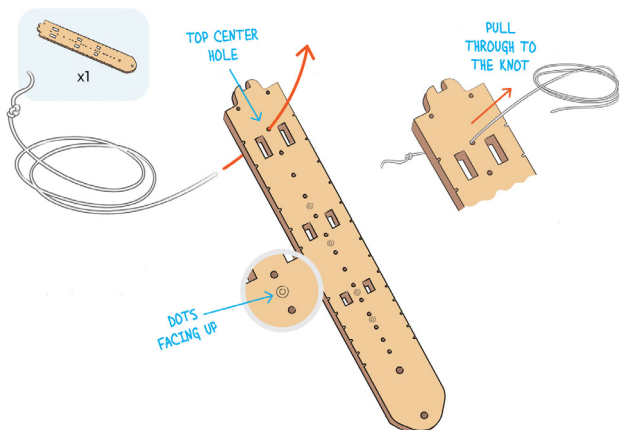
BUILD THE FRETBOARD

This lets you play different notes on the strings

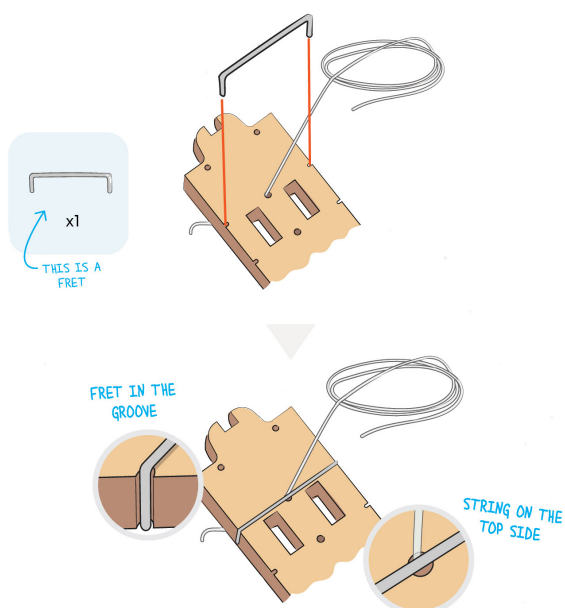
Step 1



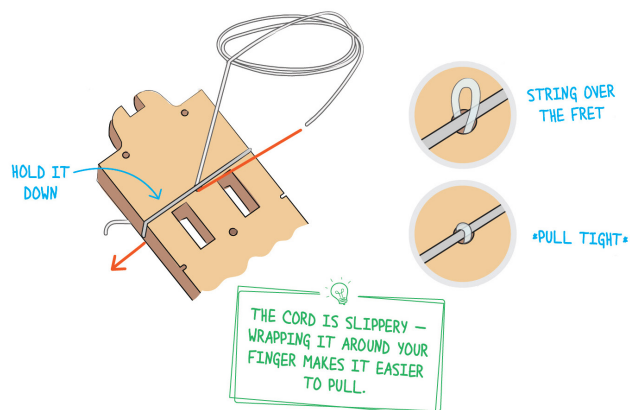
Step 2



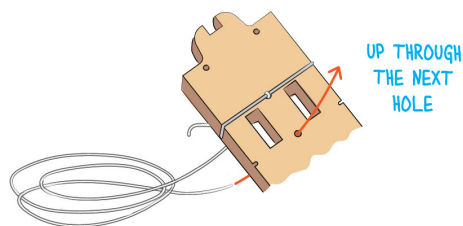
Step 3



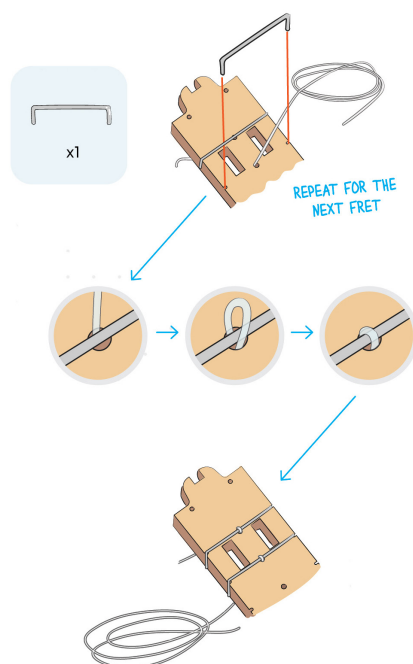
Step 4



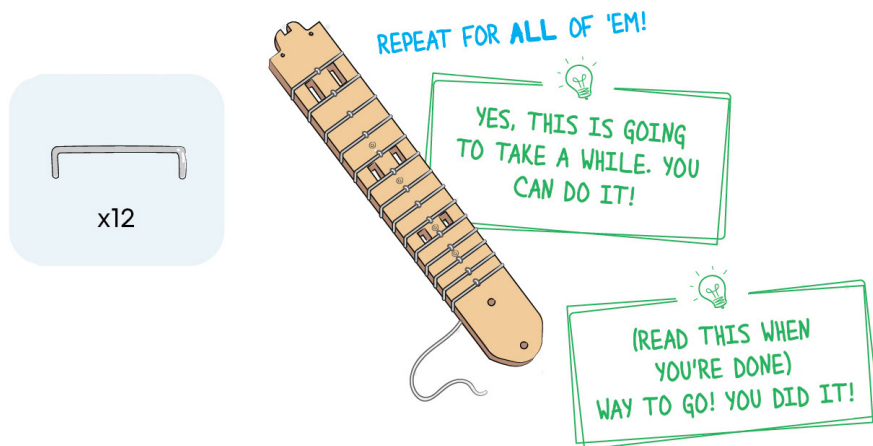
Step 5



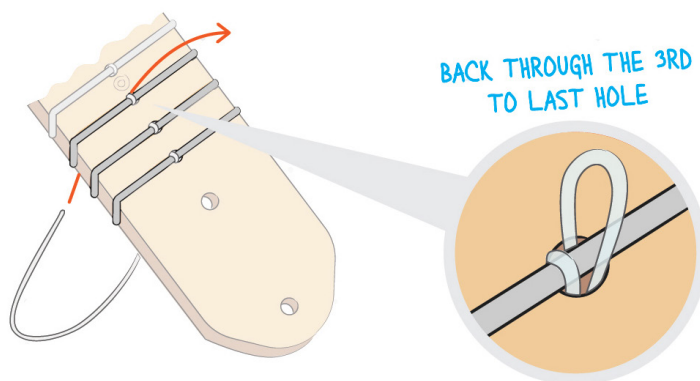
Step 6



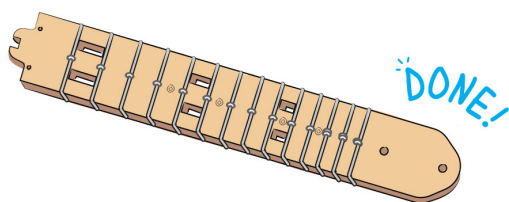
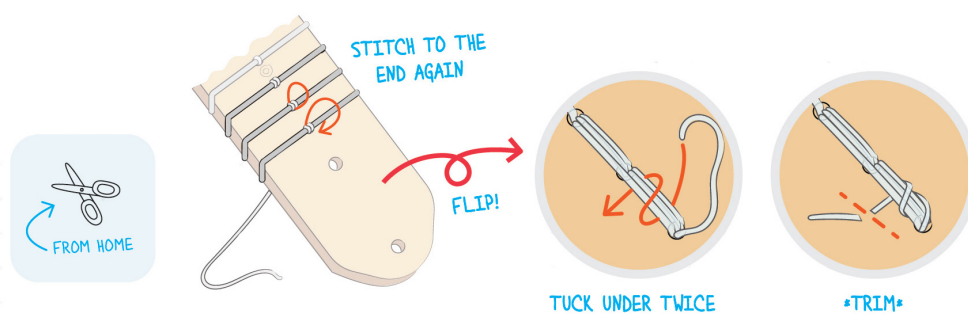
Step 7



Step 8a



Step 8b

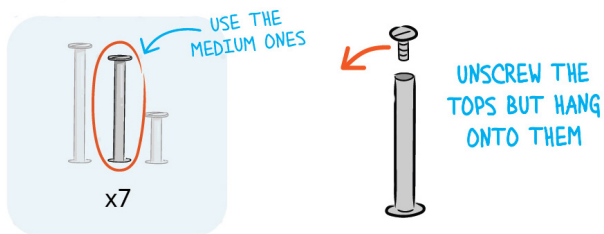


PART B

BUILD THE BODY AND NECK

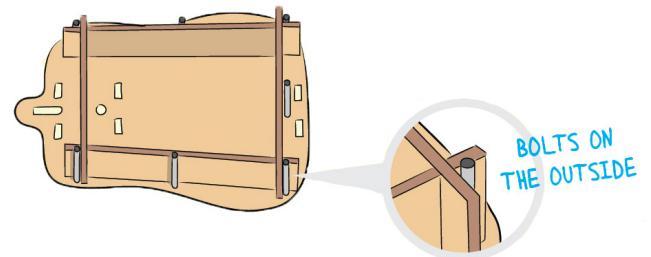
This is the main part of the ukulele. Besides, you know, the strings.

Step 1

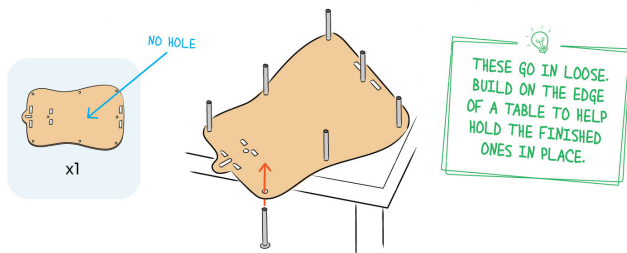


STOP & CHECK

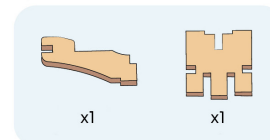
Make sure the sides of the ukulele match the picture, with the bolts on the outside.



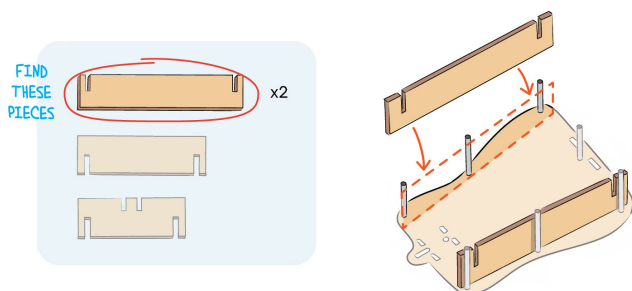
Step 2



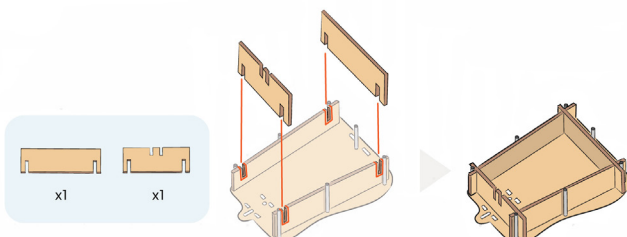
Step 5



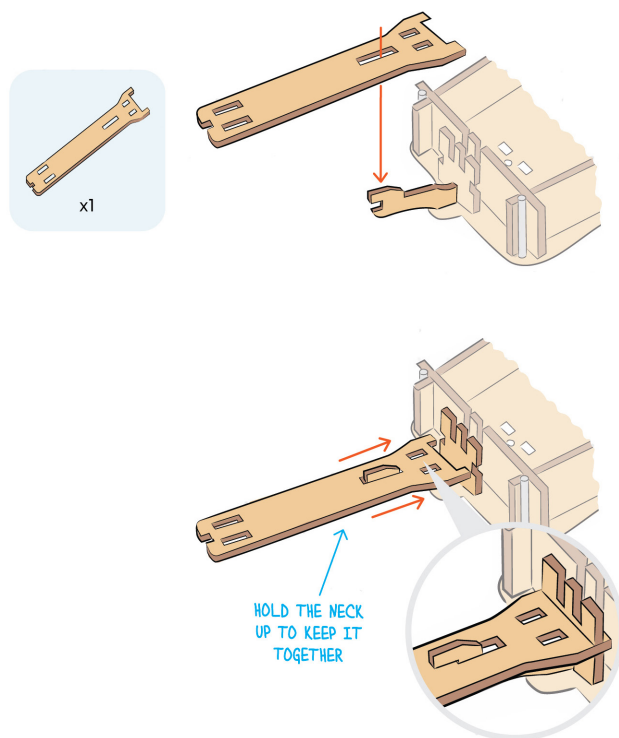
Step 3



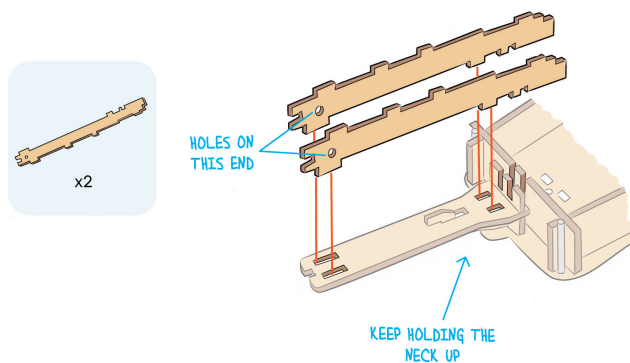
Step 4



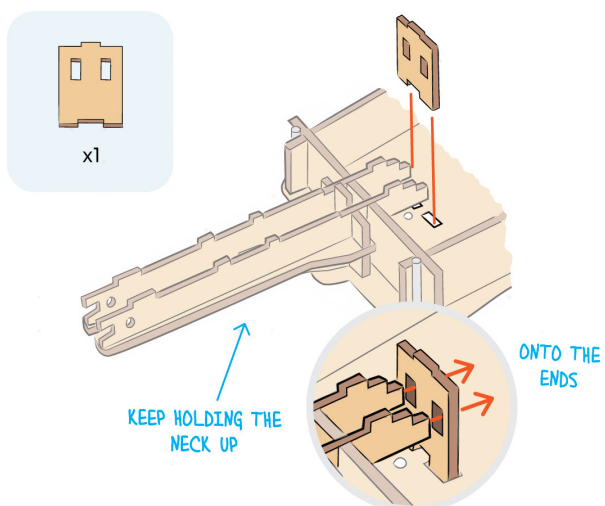
Step 6



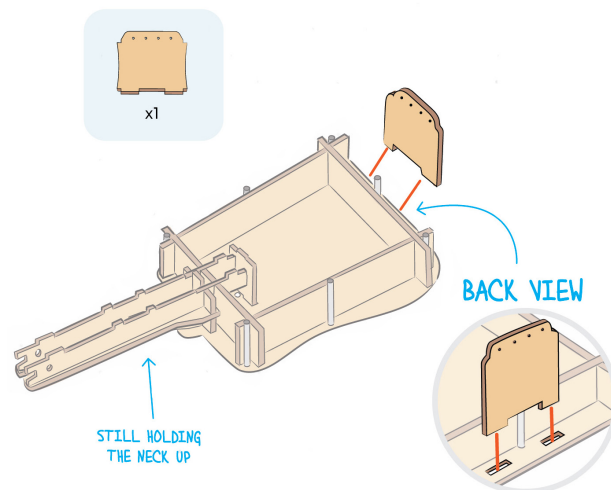
Step 7



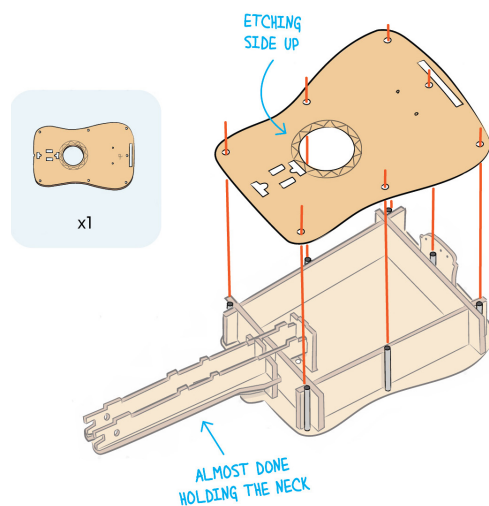
Step 8



Step 9

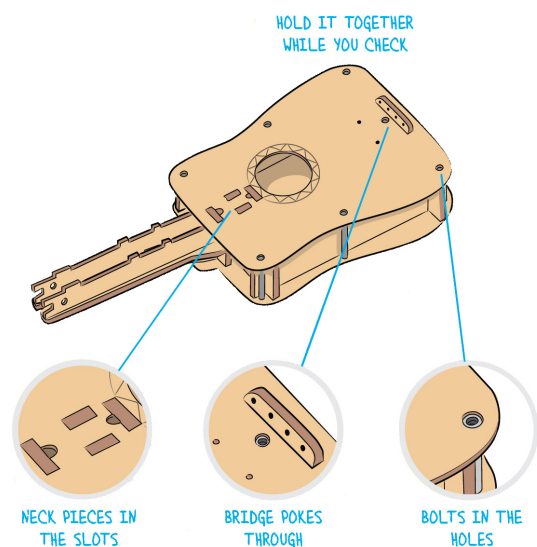


Step 10

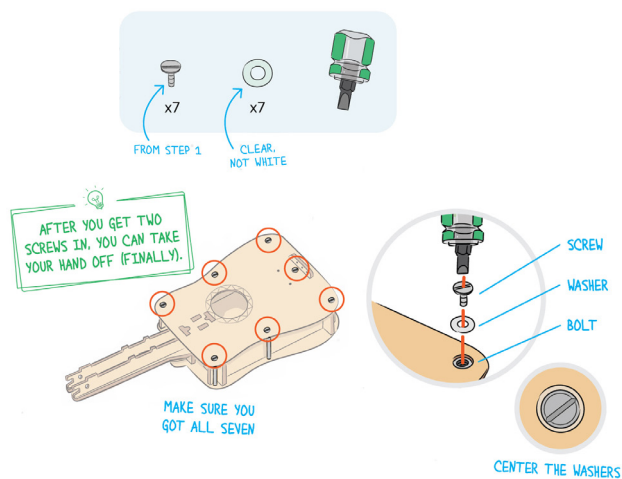


STOP & CHECK

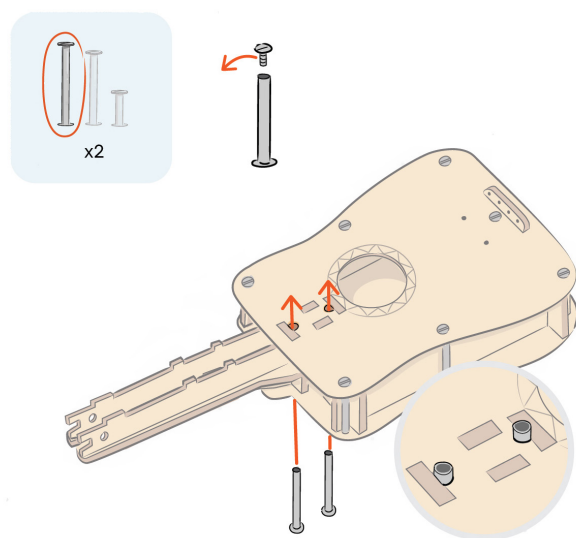
Check to make sure all the pieces are lined up correctly with the front of the ukulele.



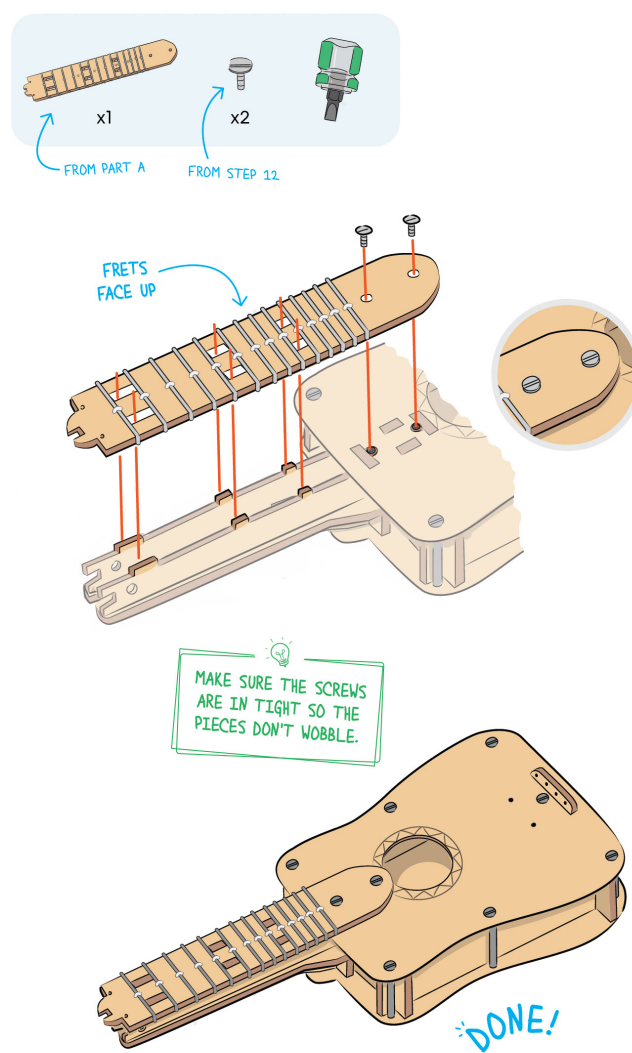
Step 11



Step 12



Step 13



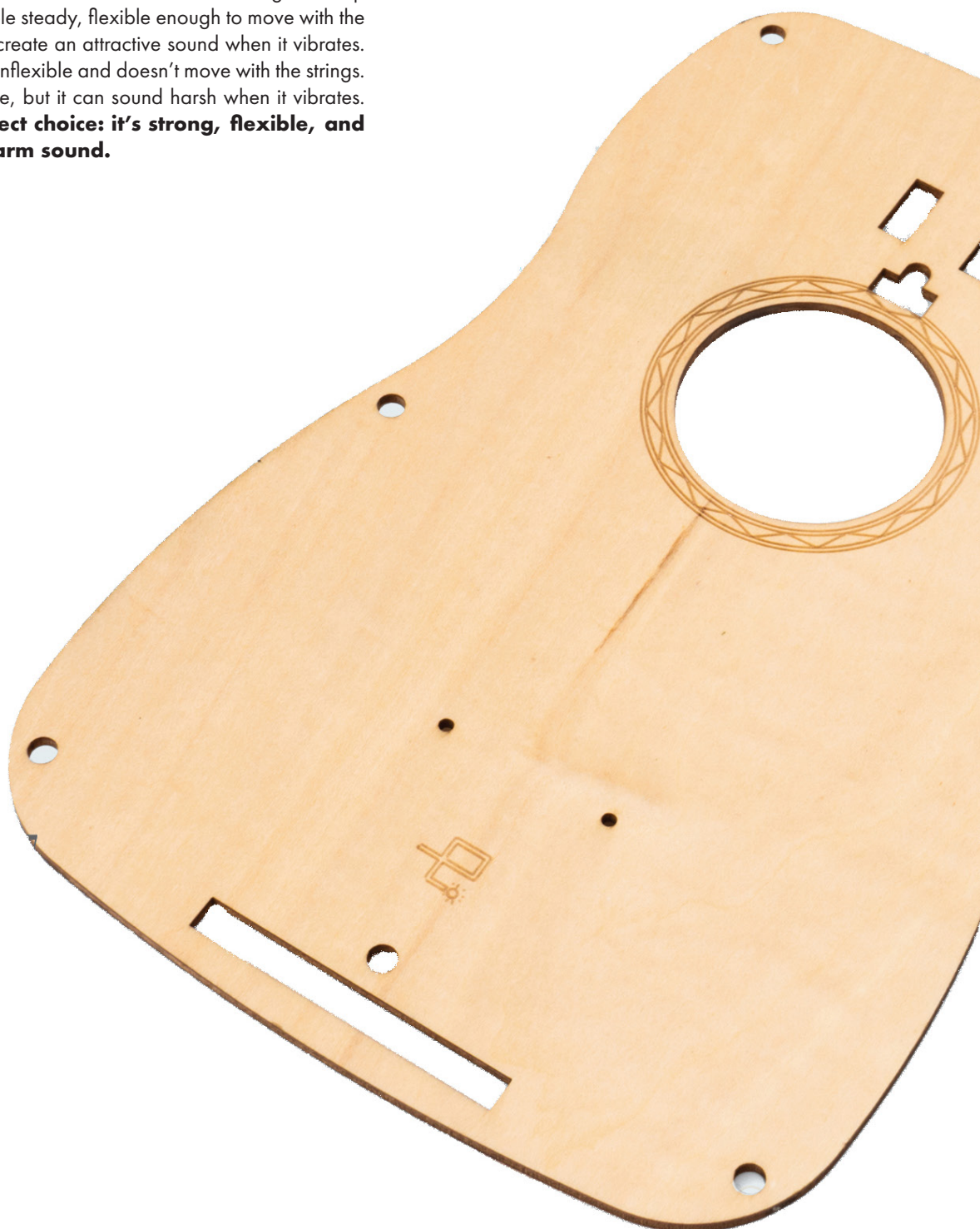
What's That Stuff?

WOOD

So yes, this piece is obviously wood... but why is it wood?

It's not just because it's easy to laser-cut fancy patterns in wood (although that didn't hurt) - it's also for **vibration**. On their own, the skinny little strings make hardly any sound when they're plucked. The ukulele's soundboard (that's the front piece) is designed to vibrate along with the strings, which **helps to crank up the volume** on your ukulele's sound.

To do this well, you need a material that's stiff enough to keep the body of the ukulele steady, flexible enough to move with the strings, and able to create an attractive sound when it vibrates. Plastic is stiff, but it's inflexible and doesn't move with the strings. Metal can be flexible, but it can sound harsh when it vibrates. **Wood is the perfect choice: it's strong, flexible, and makes a nice, warm sound.**

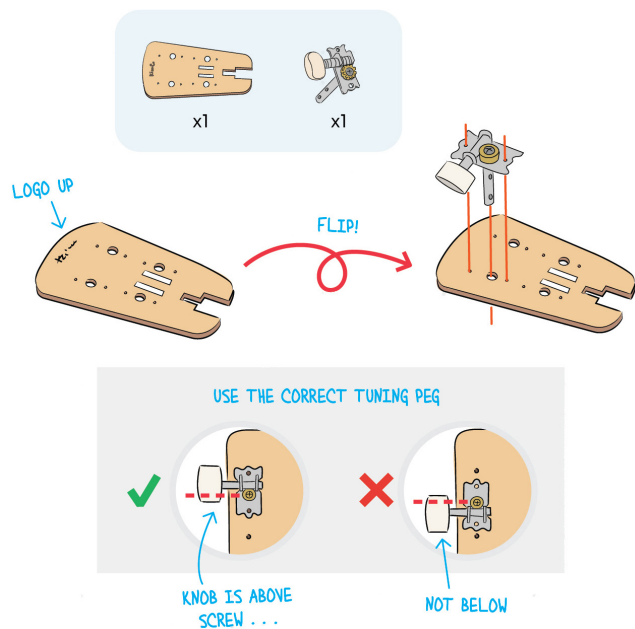


PART C

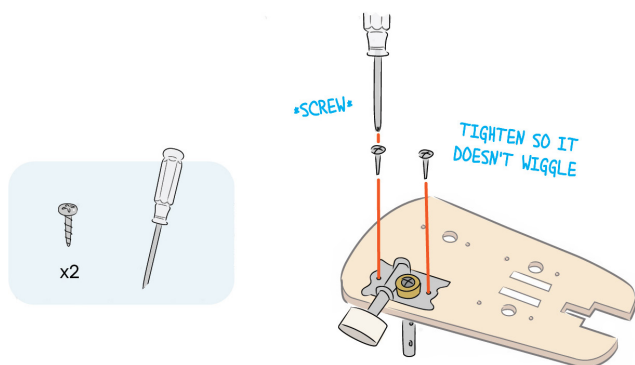
ADD THE HEAD

This is what gets your ukulele strings in tune.

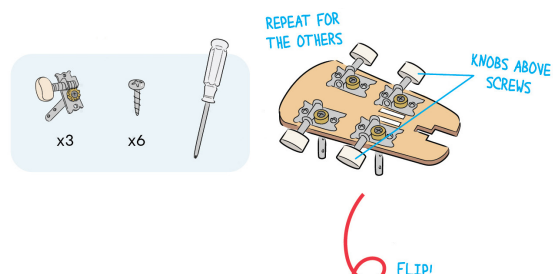
Step 1



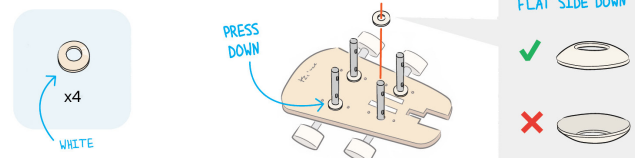
Step 2



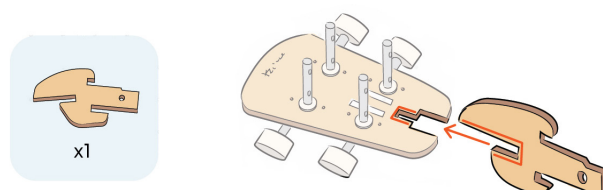
Step 3



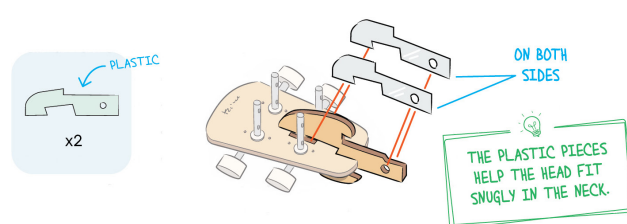
Step 4



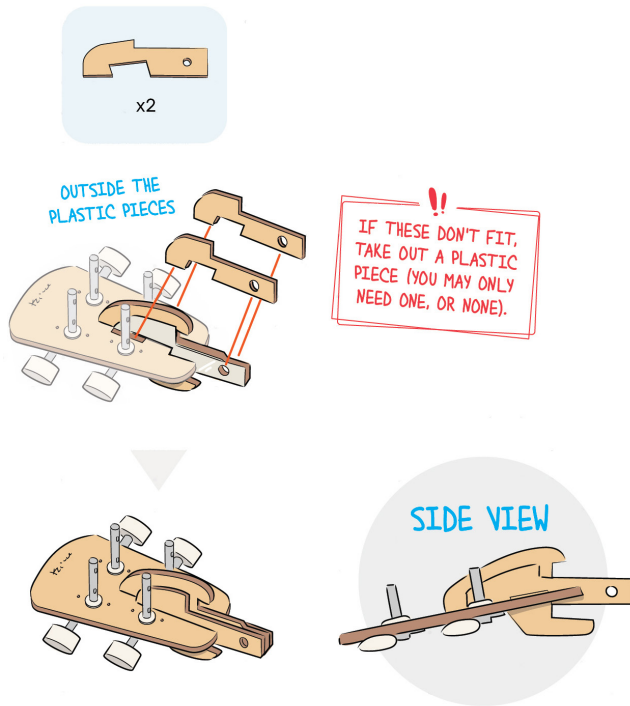
Step 5



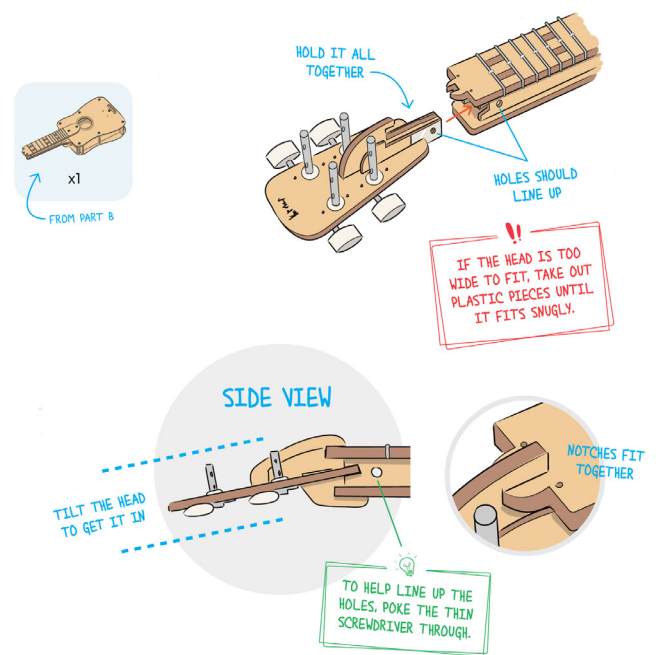
Step 6



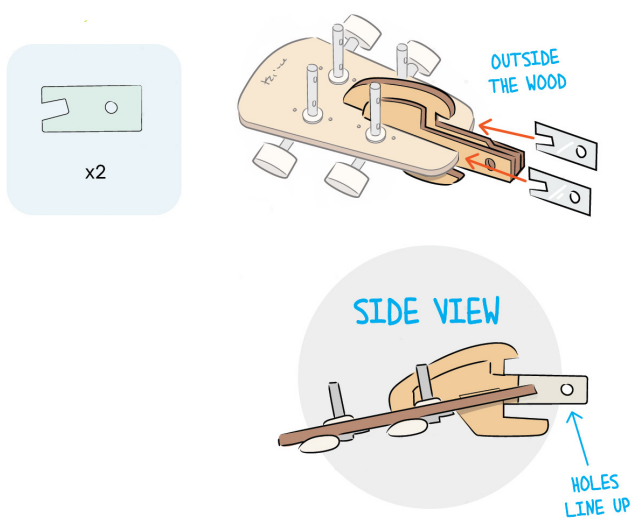
Step 7



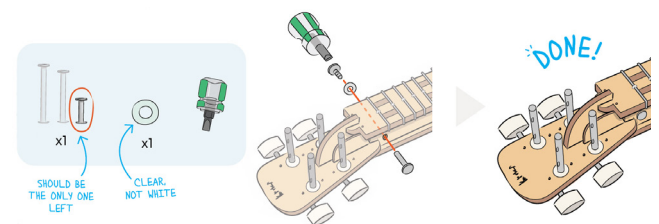
Step 9



Step 8



Step 10

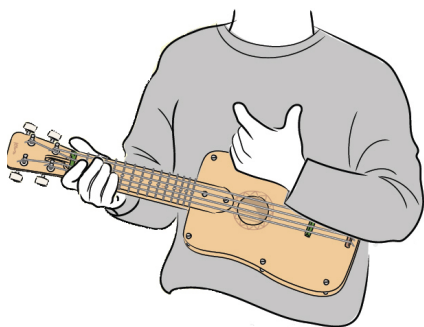


PART D

STRING THE UKULELE

These make your ukulele sing!

BEFORE YOU CONTINUE

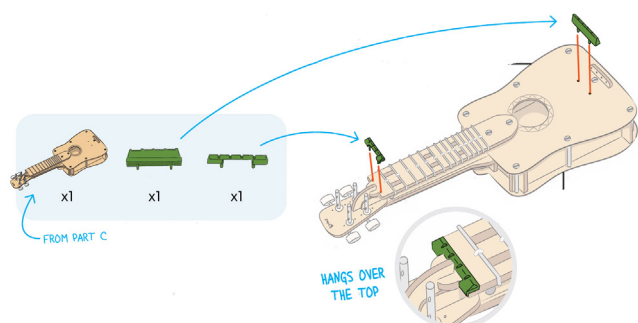


From here forward, we set up the ukulele for a **right-handed player**. If you're **left-handed**, here's what you can change to play lefty:

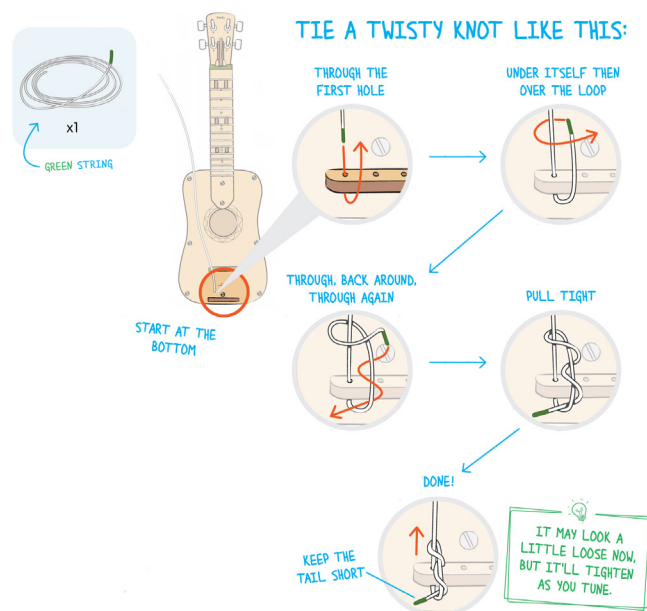
1. In this part, put the strings on in the opposite order. From left to right, you want the strings going **Yellow**, **Blue**, **Red**, **Green**.
2. **On page 28**, flip the ukulele so you hold the neck with your right hand and strum with your left.
3. **On page 29**, mirror your chord fingering so you use the same fingers and fret placement, but you press on the opposite strings.

These are just guidelines, though. If you want to play righty or do something different, that's fine too! Play however feels most natural to you.

Step 1

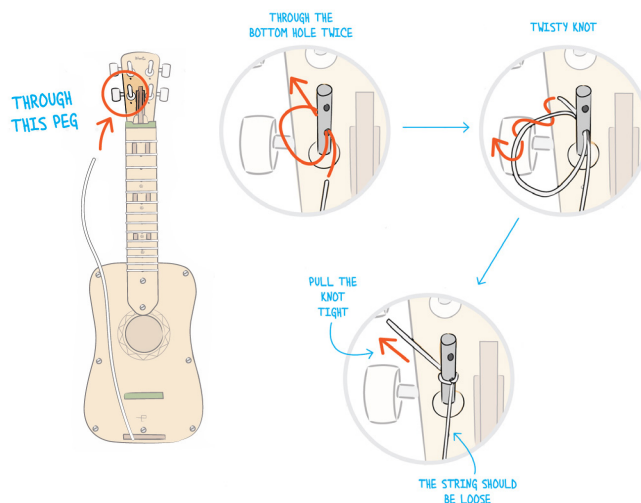


Step 2

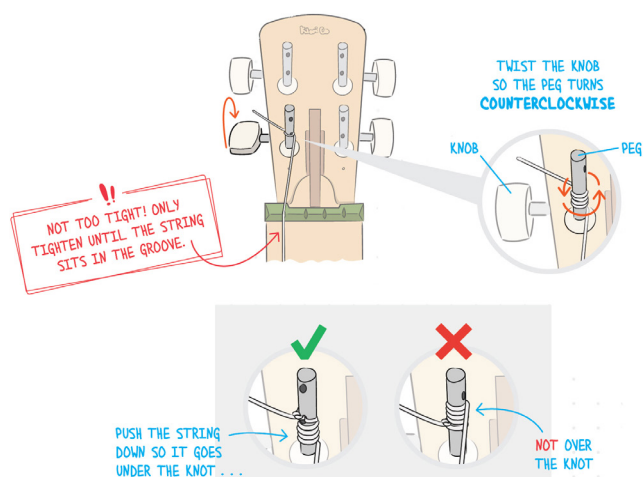


Step 3

Secure string like this

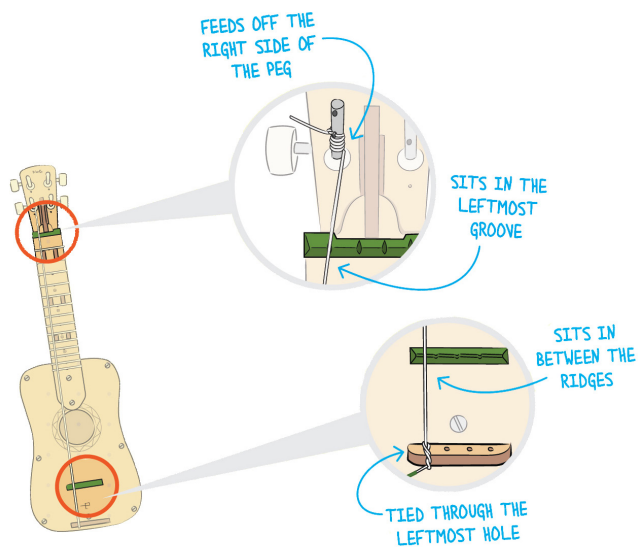


Step 4

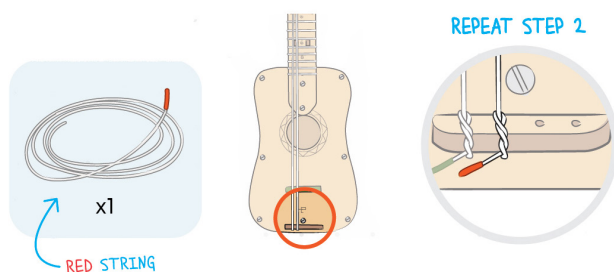


STOP & CHECK

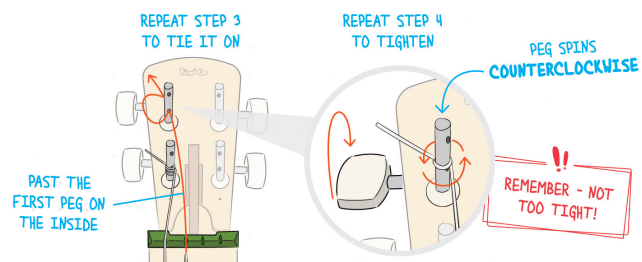
Make sure the strings is in the correct spot at the top and bottom of the ukulele.



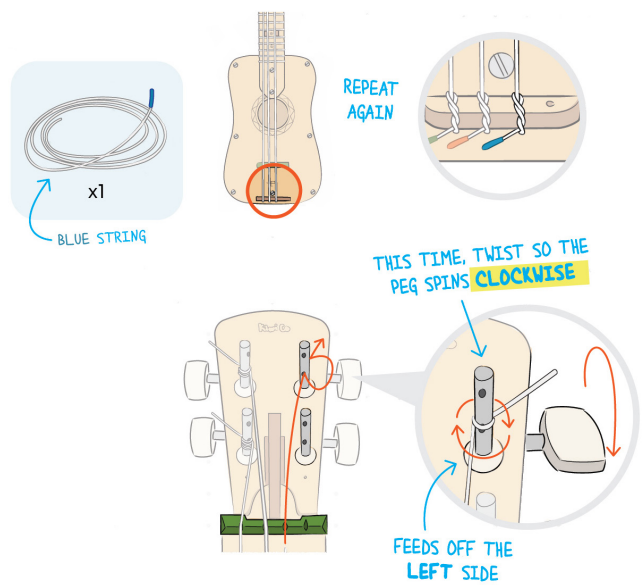
Step 5



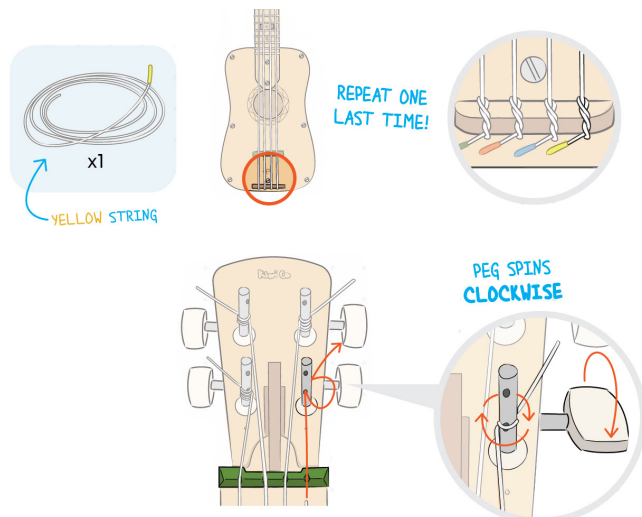
Step 6



Step 7

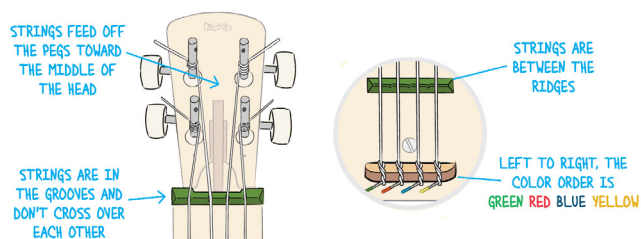


Step 8

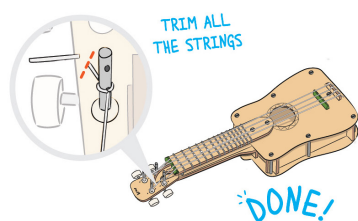


STOP & CHECK

Make sure all the strings are in the correct spots at the top and bottom of the ukulele.



Step 9



**Give it
a strum**

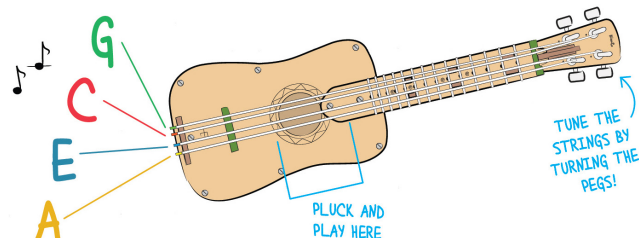
**Hear a buzzing or
rattling sound?**

Tighten down the bolts and add plastic washers if needed (check step B11). Also make sure the strings aren't hitting anything.

HOW TO TUNE YOUR UKULELE

Before you play anything, you need to tune the strings!

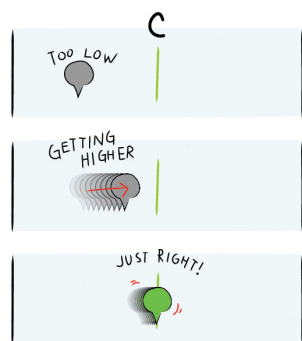
Tuning is how you make the strings play the right notes. Each string will be tuned to a specific musical note:



Right now, though, the strings probably aren't playing those notes. That's why you need to tune!

Step 1

First, download a tuner app.



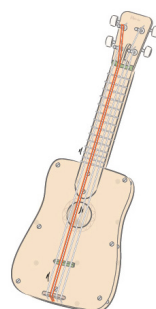
A tuner is a device that tells you what note you're playing. It'll also show you if what you're playing is too low or too high, and how far you are from the right note.

If you don't know anything about music or notes, we recommend **GuitarTuna** by Yousician.

If you know more about music, like the order of notes in a scale, try **Tuner Lite** by Piascore (or even a real guitar tuner).

Step 2

Next, start tuning with the red string.



Why start here?

It's easiest to start tuning on the string that plays the lowest note, which for ukuleles, is this one! We have you tune from low to high rather than top to bottom.

You're going to tune this to the note **C**!

Step 3

Point the ukulele at the tuner.

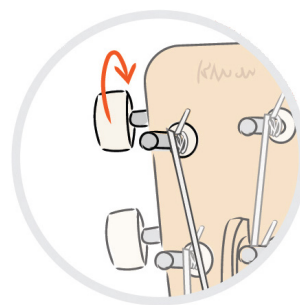


(OR JUST RIGHT!)

Then start plucking the **C** string.

The tuner will show if what you're playing is higher or lower than C.

Step 4



If you're having trouble, don't worry!

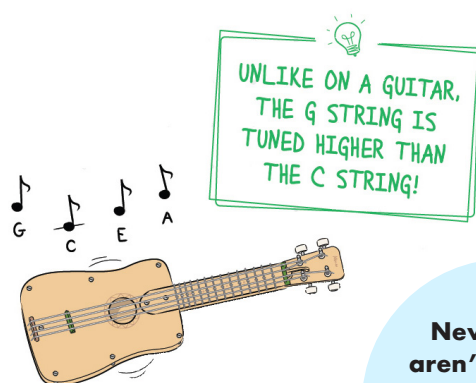
Tuning can be tricky. Check out online videos where you can hear the notes too!

To get the string to play C, you'll need to loosen or tighten it with the tuning peg.

1. **If it's too low**, tighten the string to make it play higher.
2. **If it's too high**, loosen the string to make it play lower.

This takes experimentation! Keep plucking while you turn the peg to see how the string's sound is changing.

Step 5



New strings aren't stretchy,

so they'll detune pretty quickly.
Keep tuning and stretching
them, and they'll hold their
note.

Once you get the **red string playing C**, repeat these steps to tune the other strings! Tune the **blue string to E**, the **green string to G**, and the **yellow string to A**.

When you finish, double-check that the strings are still in tune. All that tightening and loosening can change what note they're playing. Retune if necessary, then flip the page to learn how to play!